



U.S. Commissioner's Court
Chisana Historic District
Chisana, Alaska
Jet Lowe, 1982, HABS, view north



First N.P. Nelson Cabin
Chisana Historic District
Chisana, Alaska
Jet Lowe, 1982, HABS, view south



Left to right
Herst cabin, U.S. Comm. Ct.,
U.S. Comm. residence (rear)
Chisana Historic District
Chisana, Alaska
Jet Lowe, 1982, HABS, view southeast



Post Office and Cache
Chisana Historic District
Chisana, Alaska
Jet Lowe, 1982, HABS, view northwest



Chitina Alaska

Chitina, Alaska. Ca. 1933

please credit

Anchorage Historical and
Fine Arts Museum
121 WEST 7TH AVENUE
ANCHORAGE, ALASKA 99501

CHITINA TIN SHOP, Light Center

W.A. Koeniger

B 71.X.5.32

Chitina Tin Shop (AHRs VAL-049)

Chitina, Alaska, *DOE* *Valley, Chitina, Whittier Division*

Photo by: Anchorage Historical and Fine Arts Museum

Negative: Anchorage Historical and Fine Arts Museum

Railroad and business district, Chitina, 1933, Tin shop in upper right foreground between two larger buildings.

Photo: VAL-049-1

APR 25 1979

172



Aerial view, Chisana Historic District
Chisana, Alaska
Jet Lowe 1982, HABS, view SW
Chisana Glacier moraine upper left
Johnson Creek and Chisana River



Women's Jail

Chisana Historic District

Chisana, Alaska

Jet Lowe, 1982, HABS

View east, interior

note diamond shaped details near window



Women's Jail

Chisana Historic District

Chisana, Alaska

Jet Lowe 1982, HABS, view northwest



U.S. Commissioner's Court

Chisana Historic District

Chisana, Alaska

Jet Lowe, 1982, HABS, view southwest
interior



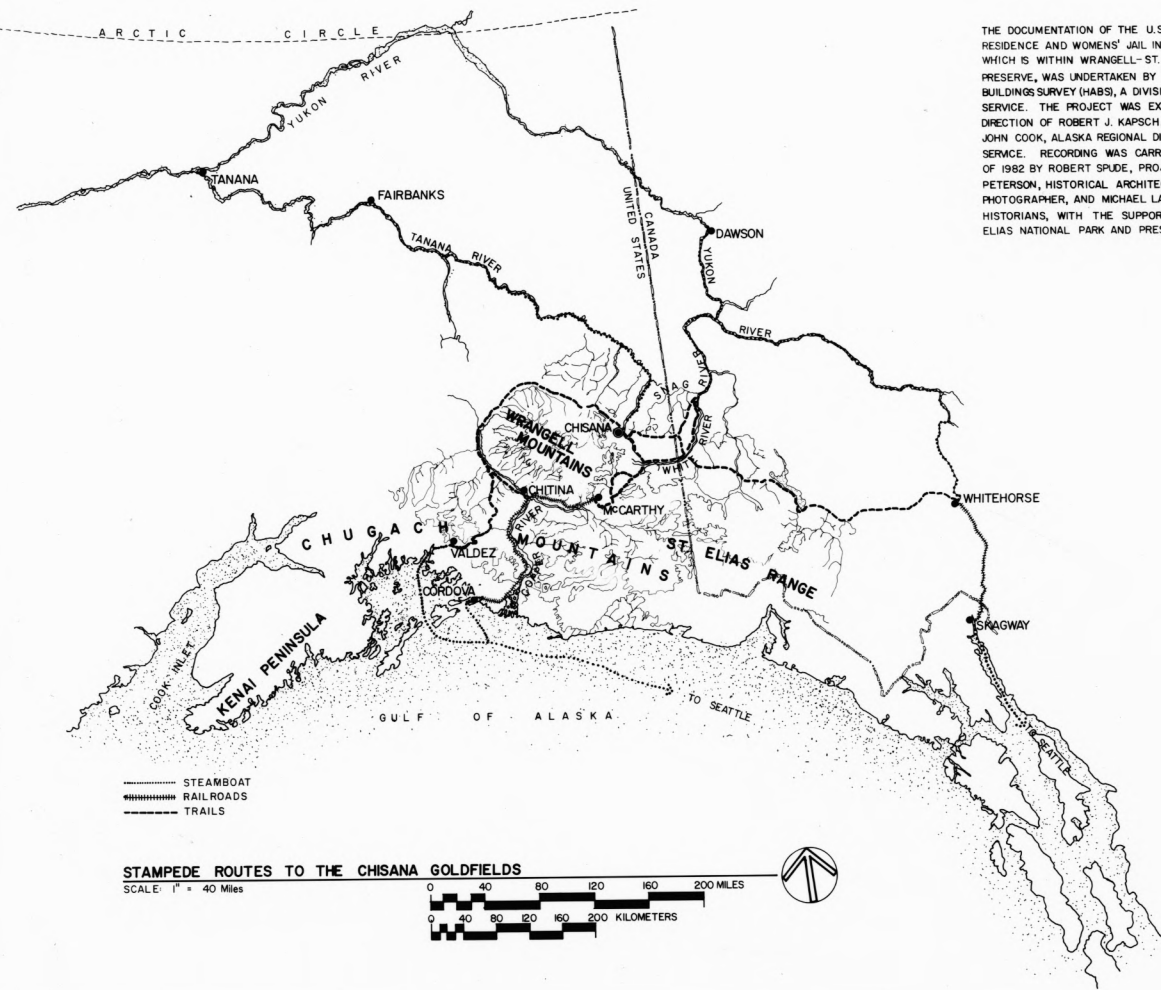
Herst cabin

Chisana Historic District

Chisana, Alaska

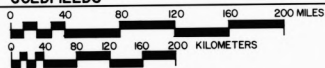
Jet Lowe, 1982, HABS, view north

CHISANA



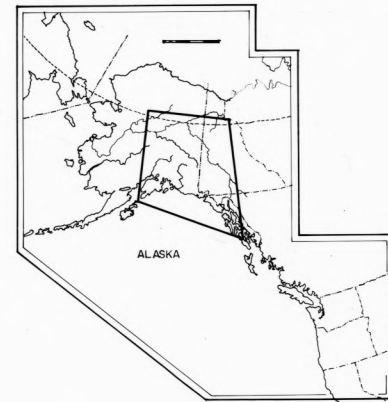
STAMPEDE ROUTES TO THE CHISANA GOLDFIELDS

SCALE: 1" = 40 Miles

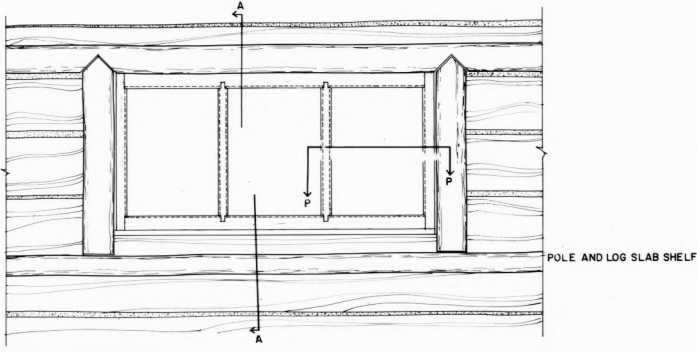
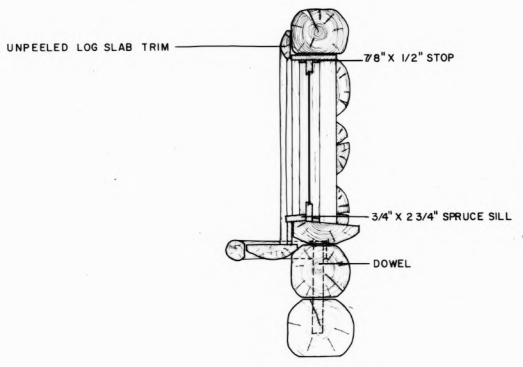


THE DOCUMENTATION OF THE U.S. COMMISSIONER'S COURT, RESIDENCE AND WOMEN'S JAIL IN CHISANA HISTORIC DISTRICT, WHICH IS WITHIN WRANGELL-ST. ELIAS NATIONAL PARK AND PRESERVE, WAS UNDERTAKEN BY THE HISTORIC AMERICAN BUILDINGS SURVEY (HABS), A DIVISION OF THE NATIONAL PARK SERVICE. THE PROJECT WAS EXECUTED UNDER THE GENERAL DIRECTION OF ROBERT J. KAPSCH, CHIEF OF HABS/HAER, AND JOHN COOK, ALASKA REGIONAL DIRECTOR, NATIONAL PARK SERVICE. RECORDING WAS CARRIED OUT DURING THE SUMMER OF 1982 BY ROBERT SPUDE, PROJECT DIRECTOR, STEVEN PETERSON, HISTORICAL ARCHITECT, JOHN LOWE III, PHOTOGRAPHER, AND MICHAEL LAPPEN AND DANIEL TAYLOR, HISTORIANS, WITH THE SUPPORT OF THE WRANGELL-ST. ELIAS NATIONAL PARK AND PRESERVE STAFF.

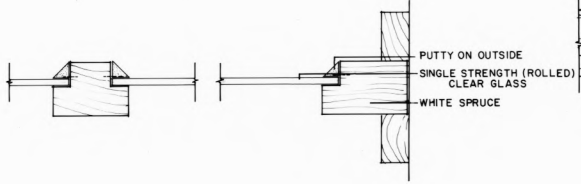
DURING THE FINAL YEARS OF THE ALASKA GOLD RUSH, PETER "NORTH POLE" NELSON AND BILLY JAMES DISCOVERED GOLD ON BONANZA CREEK, SEVEN MILES EAST OF CHISANA. THIS DISCOVERY IN THE SPRING OF 1913 SPURRED NEARLY 5000 SOURDUGHS TO STAMPEDE INTO THE WRANGELL MOUNTAINS REGION AND TO DEVELOP THE SETTLEMENT OF CHISANA WHICH BECAME THE REGIONAL COMMERCIAL AND SOCIAL CENTER. TONY DIMOND, A VALDEZ LAWYER AND MINER, WAS APPOINTED CHISANA'S FIRST U.S. COMMISSIONER. GOVERNMENTAL PROPERTY COMPRISED THE COMMISSIONER'S HOME, THE COURTHOUSE AND THE MEN'S AND WOMEN'S JAILS, THE LATTER UNUSUAL IN ALASKA IN 1913. THE HUMBLE STRUCTURES REFLECT THE INTRODUCTION OF LAW AND ORDER IN EARLY FRONTIER SETTINGS.



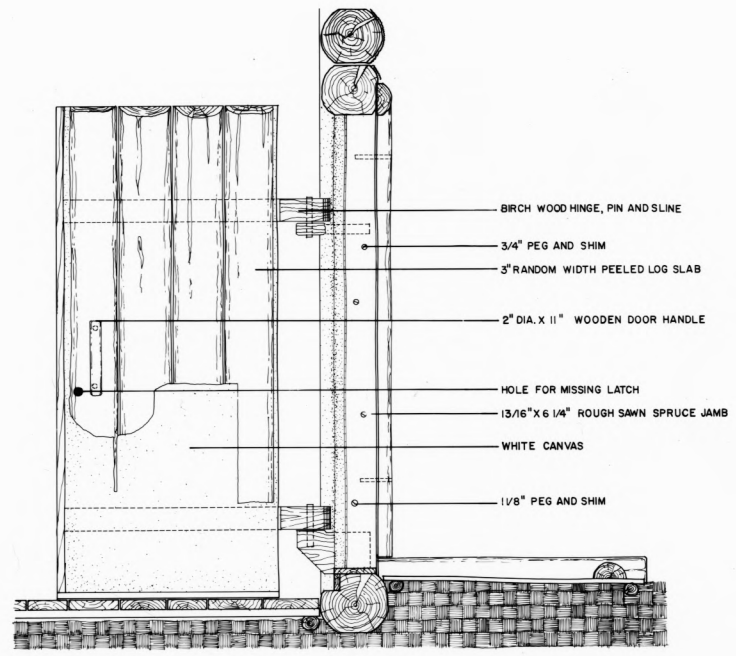
TRIM LINE



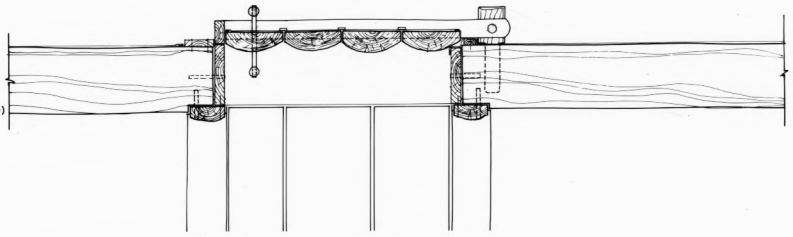
WINDOW ELEVATION
SCALE: 1 1/2" = 1'-0"



WINDOW SECTION
FULL SCALE



DOOR ELEVATION
SCALE: 1 1/2" = 1'-0"



SECTION—DOORWAY
SCALE: 1 1/2" = 1'-0"

TRIM LINE

BLACK, 2 PLY ROLLED ROOFING

1" X 8" ROUGH SAWN DECKING

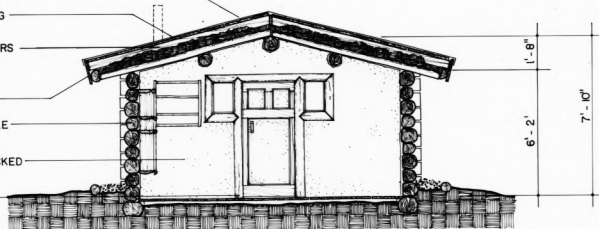
2" X 4" ROUGH SAWN RAFTERS
AT 2'-5" O/C - NOTE: MAY
BE A LATER ADDITION

1" X 12" ROUGH SAWN FACIA

7 TO 9" LOGS WITH SADDLE
NOTCH CORNERS

WHITE TENT CANVAS TACKED
TO WALLS AND CEILING

UNPEELED LOG SLAB
TRIM



SECTION A - A

SCALE: 3/8" = 1'-0"

8 TO 10" LOG PURLINS

MOSS AND SOD INSULATION

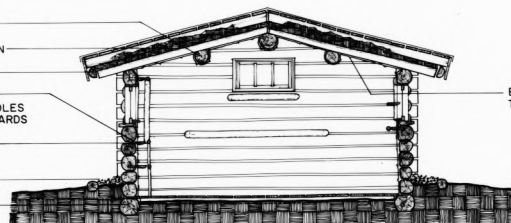
7" SPLIT LOG FACIA

INTERIOR LOG SURFACES
CHINKED WITH MOSS, 1" POLES
AND BLAZO-FUEL BOX BOARDS

LOG SLAB AND POLE
FRAME SHELVEING

8" GRAVEL BED

SILL LOGS ON GRADE



SECTION B - B

MATERIAL NOTES:

MAIN CABIN:

WALLS - 7" TO 9" UNPEELED LOGS, INTERIOR FACE HEWN TO FACILITATE DRYING WHEN CONSTRUCTED. LOGS ARE CHINKED WITH 1/2" STICK POLES, PARTS FROM BLAZO WOODEN FUEL BOXES, AND MOSS. SURFACE IS COVERED WITH DARK GREEN BURLAP WHICH IS STRETCHED AND TACKED TO SURFACE. LOGS JOINED WITH A SADDLE NOTCH.

FLOOR - 1" X RANDOM WIDTH (7" TO 9") ROUGH SAWN PLANKING WHICH IS NAILED TO WOODEN STRINGERS (AT 2'-6" ON CENTER) THAT REST ON GRADE. NO EVIDENCE OF ANY FLOOR COVERING.

CEILING - SAWN SPRUCE SLAB CEILING, RESTS ON 9" AVERAGE LOG PURLINS. THE CEILING AND PURLINS ARE COVERED WITH DARK GREEN BURLAP. MOSS AND SOD ON TOP OF CEILING PROVIDES 5" OF INSULATION. IN LATER YEARS A NEW ROOF WITH 2" X 5" RAFTERS, 1" X 8" ROUGH SAWN PLANKING AND A ONE-PLY ROLLED ROOF COVERING WERE ADDED.

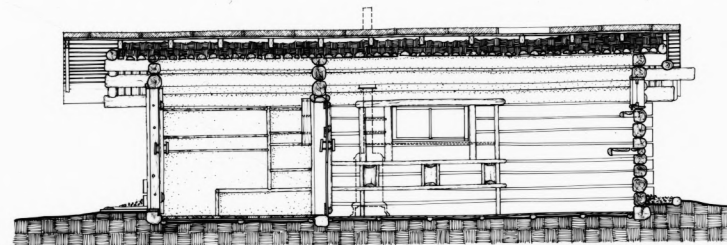
FRONT ENTRY:

WALLS - 7" TO 9" UNPEELED LOGS FOR BOTTOM THREE LOGS. (NOTE: AT A LATER PERIOD THE WALLS WERE TOTALLY ENCLOSED WITH 8" LOGS AND HUDSON BAY CORNERS. CONSTRUCTION INDICATES THAT THE FRONT ENTRY ORIGINALLY SERVED AS AN OPEN PORCH.)

INTERIOR SURFACE HAS BEEN HEWN FLAT TO FACILITATE DRYING AND COVERED WITH A HEAVY WEIGHT WHITE CANVAS COVERING.

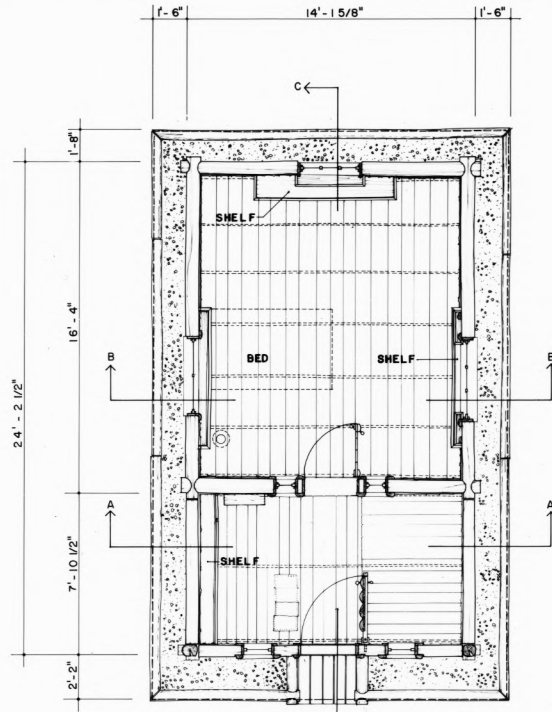
FLOOR - 1" X RANDOM WIDTH (7" AVERAGE) ROUGH SAWN PLANKING. A SECOND SURFACE OF SIMILAR PLANKING HAS BEEN ADDED ON THE EAST 1/2 OF THE ENTRY FLOOR. NO EVIDENCE OF ANY FLOOR COVERING.

CEILING - SAME CONSTRUCTION AS IN MAIN CABIN. INTERIOR SURFACE COVERED WITH WHITE CANVAS.



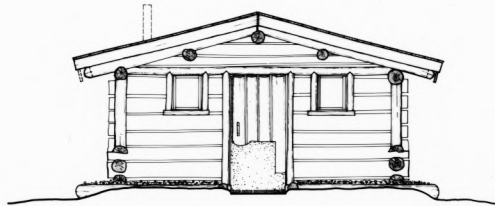
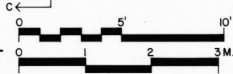
SECTION C - C

TRIM LINE

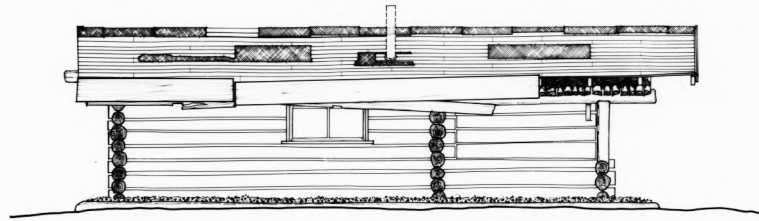


PLAN

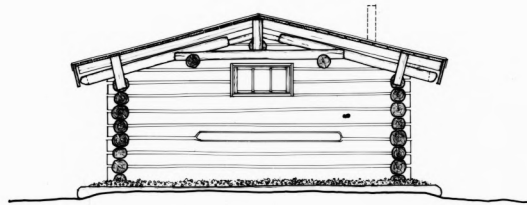
SCALE: 3/8" = 1'-0"



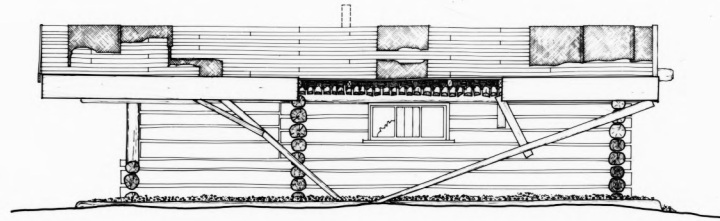
SOUTH ELEVATION



WEST ELEVATION



NORTH ELEVATION



EAST ELEVATION

TRIM LINE

DRAWN BY: STEVEN M. PETERSON, 1982
 NATIONAL ARCHITECTURAL AND ENGINEERING RECORD
 UNITED STATES DEPARTMENT OF THE INTERIOR
 WRST
 NAME AND LOCATION OF STRUCTURE
CHISANA
 U.S. COMMISSIONER'S RESIDENCE
 ALASKA
 SURVEY NO.
 AK-9B
 HISTORIC AMERICAN BUILDINGS SURVEY
 SHEET 8 OF 8

TRIM LINE

MATERIAL NOTES:

ORIGINAL BUILDING:

- WALLS- 9" TO 11" LOGS, UNPEELED WITH "V" NOTCH AT THE CORNERS. INTERIOR SURFACES HEWN TO FACILITATE DRYING WHEN CONSTRUCTED. INTERIOR DOOR AND WINDOW TRIM PAINTED DARK EMERALD GREEN. NO INDICATION OF INTERIOR WALL COVERING.
- FLOOR- 1 1/4" X RANDOM WIDTH (7 1/2" TO 10") ROUGH SAWN SPRUCE PLANKING NAILED TO LOG STRINGERS AT 3'9" ON CENTER. STRINGERS LOCATED ON GRADE. NO INDICATION OF ADDITIONAL FLOOR COVERING.
- ROOF- AS INDICATED ON DRAWINGS.

FRONT ADDITION:

- WALLS- 5 1/2" LOGS, UNPEELED WITH HUDSON BAY CORNERS. CHINKED WITH MOSS, INTERIOR SURFACE HEWN, NO COVERINGS.
- FLOOR- SAME AS MAIN CABIN. SOME REMOVED WITH DIRT EXPOSED.
- ROOF- SAME AS MAIN CABIN.

WEST ADDITION:

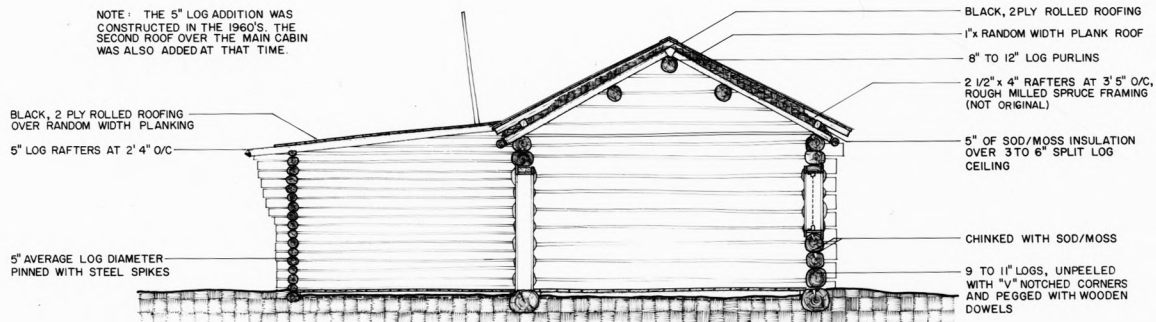
- WALLS- 5" PEELED LOGS, SADDLE NOTCHED CORNERS, CHINKED WITH MOSS, NO INTERIOR COVERINGS.
- FLOOR- 1" X RANDOM WIDTH (6" AVERAGE) ROUGH SAWN PLANKING ON LOG STRINGERS AT 3'0" ON CENTER. THE STRINGERS REST ON GRADE. NO OTHER FLOOR COVERINGS ARE EVIDENT.
- ROOF- 5" LOG RAFTERS AT 1'4" ON CENTER, COVERED WITH RANDOM WIDTH, ROUGH SAWN SPRUCE PLANKING COVERED WITH TWO LAYERS OF ROLLED ROOFING. SOD ADDED ON TOP FOR INSULATION PURPOSES.



SECTION B-B



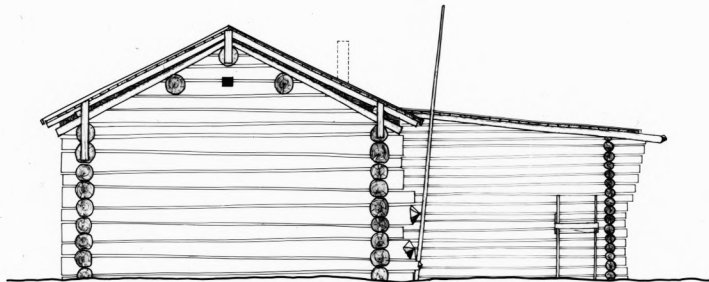
NOTE: THE 5" LOG ADDITION WAS CONSTRUCTED IN THE 1960'S. THE SECOND ROOF OVER THE MAIN CABIN WAS ALSO ADDED AT THAT TIME.



SECTION A-A

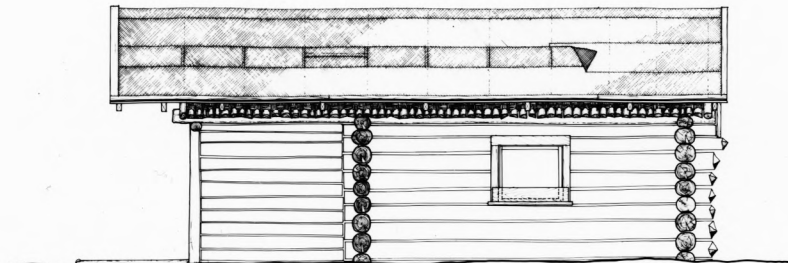
SCALE 3/8" = 1' - 0"

TRIM LINE



NORTH ELEVATION

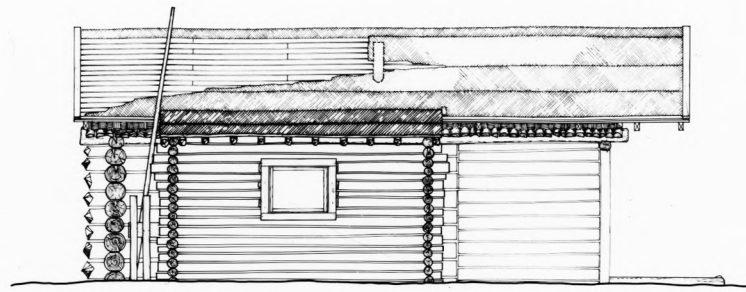
SCALE = 3/8" = 1'-0"



EAST ELEVATION



SOUTH ELEVATION

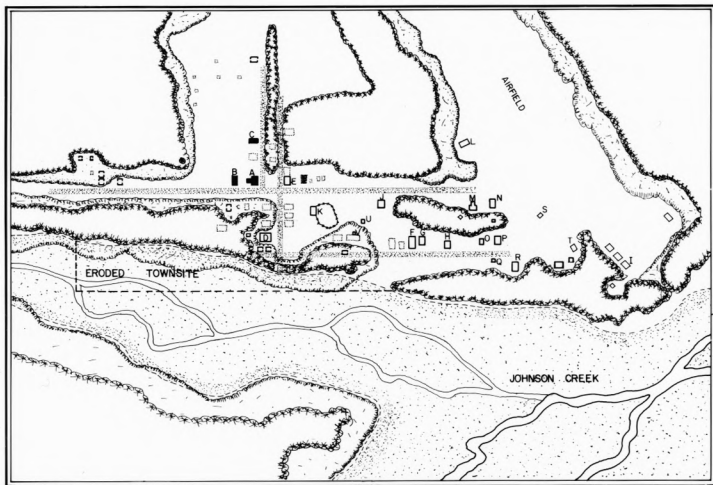


WEST ELEVATION

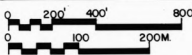
TRIM LINE

DRAWN BY: STEVEN M. PETERSON, 1982
 NATIONAL ARCHITECTURAL AND ENGINEERING RECORD
 UNITED STATES DEPARTMENT OF THE INTERIOR
 WBS ST
 NAME OF PROPERTY OR STRUCTURE
CHISNA
 U.S. COMMISSIONER'S COURT
 ALASKA
 SURVEY NO.
 AK-9A
 HISTORIC AMERICAN BUILDINGS SURVEY
 sheet 3 of 8 sheets

TRIM LINE

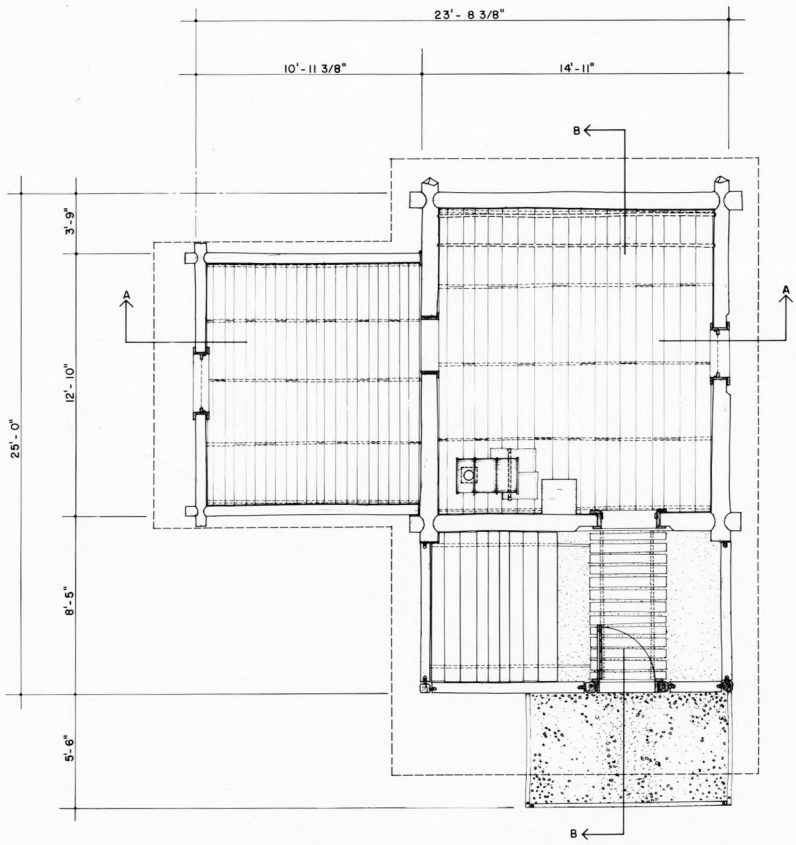


CHISANA SITE PLAN
SCALE: 1" = 200'

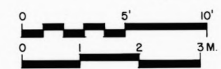


- LEGEND
- A. U.S. COMMISSIONER'S COURT
 - B. U.S. COMMISSIONER'S RESIDENCE
 - C. WOMEN'S JAIL
 - D. SALOON
 - E. EARL HERST CABIN
 - F. OLD POST OFFICE
 - G. CACHE
 - H. BLACKSMITH'S SHOP
 - L. FIRST N.P. NELSON CABIN
 - J. TOO MUCH JOHNSON CABIN
 - K. LEW'S BARN AND CORRAL

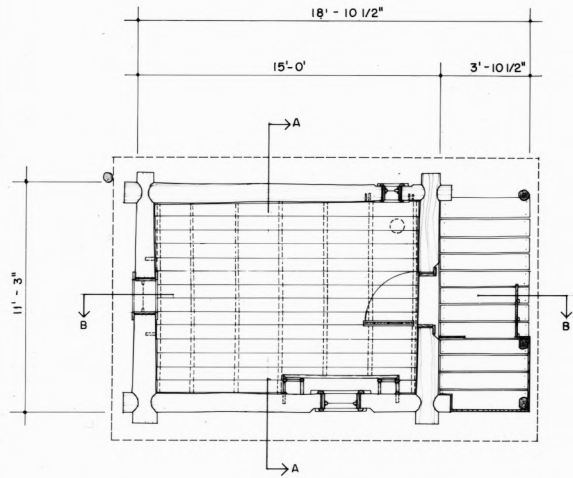
- L. SECOND N.P. NELSON CABIN
- M. RAY McNUTT - UNFINISHED CABIN
- N. RAY McNUTT - STORAGE SHED
- O. RAY McNUTT - OLD CACHE
- P. RAY McNUTT - COOKHOUSE
- Q. RAY McNUTT - STORAGE SHED
- R. RAY McNUTT - GARAGE
- S. RAY McNUTT - MAIL CABIN
- T. RAY McNUTT - RESIDENCE
- U. SMOKEHOUSE
- V. MEAT CACHE



U.S. COMMISSIONER'S COURT
SCALE: 3/8" = 1'-0"

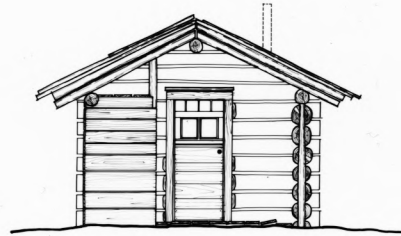
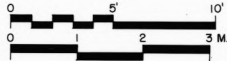


TRIM LINE

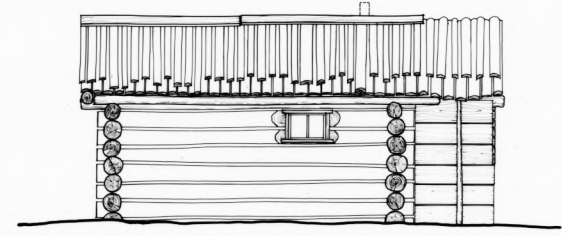


PLAN

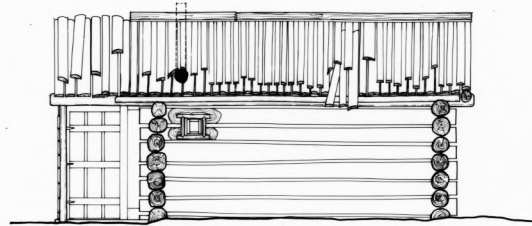
SCALE: 3/8"=1'-0"



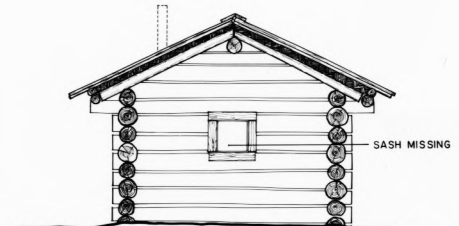
EAST ELEVATION



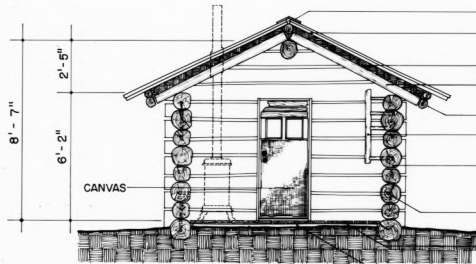
SOUTH ELEVATION



NORTH ELEVATION

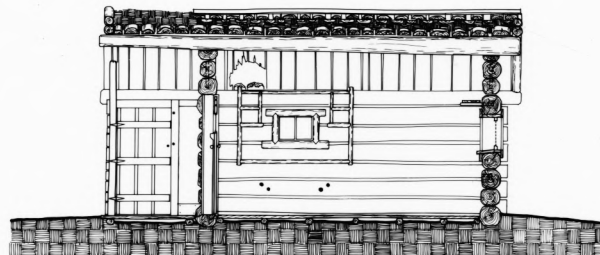


WEST ELEVATION



SECTION A-A

- 1"x5" ROUGH SAWN RIDGE CAP
- RANDOM WIDTH & THICKNESS LOG SLAB PLANKING
- 5" OF MOSS/SOD
- SPLIT LOG CEILING WITH 12" AVERAGE WIDTH
- 5" LOG POLES, PEGGED
- 2" LOG POLE & SLAB SHELVES PEGGED INTO WALLS
- 9" TO 12" LOG WALLS, SADDLE NOTCHED CORNERS. ONLY THE EAST ELEV HAS PEELED LOGS
- PEG HOLES FROM REMOVED WALL FURNITURE
- 1"x RANDOM WIDTH (8") PLANK FLOORING
- LOG STRINGER, ON GRADE



SECTION B-B

DRAWN BY: STEVEN M. PETERSON, 1982
 NATIONAL ARCHITECTURAL AND ENGINEERING RECORD
 UNITED STATES DEPARTMENT OF THE INTERIOR
 WRST

NAME AND LOCATION OF STRUCTURE
CHISANA WOMEN'S JAIL

SERVICE NO.
 AK-9C

HISTORIC AMERICAN
 MONUMENTS RECORD
 SHEET 8 OF 8 PARTS
 ALASKA

TRIM LINE