

. 1905 .

E.G. PATTERSON

GROceries - W. O'HARA - MEATS

COMMERCIAL
CLUB

- B. E. JONES, DRUGGIST. -



E. G. PATTERSON BUILDING

412-414 MAIN AVENUE, BISMARCK, NORTH DAKOTA

PHOTOGRAPHER UNKNOWN

CIRCA 1906

STATE HISTORICAL SOCIETY OF NORTH DAKOTA, BISMARCK

SOUTH FRONT FACADE, LOOKING NORTH

1 OF 11



1906
E.C. PATTERSON

TBI-STATE
INVESTMENT

TBI-STATE
INVESTMENT

CAPITOL

CAPITOL THEATRE

CAPITOL

PATTERSON HALL

DISMARCK CLOAK SHOP

SODA SERVICE DRUG NEWS
MILD FRAGRANT HANCELLOR CIGAR

SERVICE
DRUGS
SODA

SERVICE DRUG

MENS



E. G. PATTERSON BUILDING

412-414 MAIN AVENUE, BISMARCK, NORTH DAKOTA

ANDREAS RISEM

CIRCA 1930

STATE HISTORICAL SOCIETY OF NORTH DAKOTA, BISMARCK

SOUTH FRONT FACADE, LOOKING NORTHWEST

2 OF 11



E.G.PATTERSON BUILDING

412-414 MAIN AVENUE, BISMARCK, NORTH DAKOTA

ANDREAS RISEM

CIRCA 1940

STATE HISTORICAL SOCIETY OF NORTH DAKOTA, BISMARCK

SOUTH FRONT FACADE, LOOKING NORTHEAST

3 OF 11



E. G. PATTERSON BUILDING

412-414 MAIN AVENUE, BISMARCK, NORTH DAKOTA

PHOTOGRAPHER UNKNOWN

DATE UNKNOWN

STATE HISTORICAL SOCIETY OF NORTH DAKOTA, BISMARCK

SECOND FLOOR BALLROOM, LOOKING NORTH

4 OF 11



E.G. PATTERSON BUILDING

412-414 EAST MAIN AVENUE, BISMARCK, NORTH DAKOTA

JACKIE SLUSS

APRIL, 1982

STATE HISTORICAL SOCIETY OF NORTH DAKOTA, BISMARCK

STREETSCAPE, 400 BLOCK, EAST MAIN AVENUE, BISMARCK,
LOOKING NORTHEAST

5 OF 11



E. G. PATTERSON BUILDING

412-414 EAST MAIN AVENUE, BISMARCK, NORTH DAKOTA

JACKIE SLUSS

APRIL, 1982

STATE HISTORICAL SOCIETY OF NORTH DAKOTA, BISMARCK

SOUTH FRONT FACADE, LOOKING NORTH NORTHEAST

6 OF 11



E.G. PATTERSON BUILDING

412-414 EAST MAIN AVENUE, BISMARCK, NORTH DAKOTA

JACKIE SLUSS

APRIL, 1982

STATE HISTORICAL SOCIETY OF NORTH DAKOTA, BISMARCK

MAIN FLOOR, EAST BAY, LOOKING SOUTH

7 OF 11



E.G. PATTERSON BUILDING

412-414 EAST MAIN AVENUE, BISMARCK, NORTH DAKOTA

JACKIE SLUSS

APRIL, 1982

STATE HISTORICAL SOCIETY OF NORTH DAKOTA, BISMARCK

MAIN FLOOR, EAST BAY, LOOKING NORTH NORTHWEST

8 OF 11



E.G. PATTERSON BUILDING

412-414 EAST MAIN AVENUE, BISMARCK

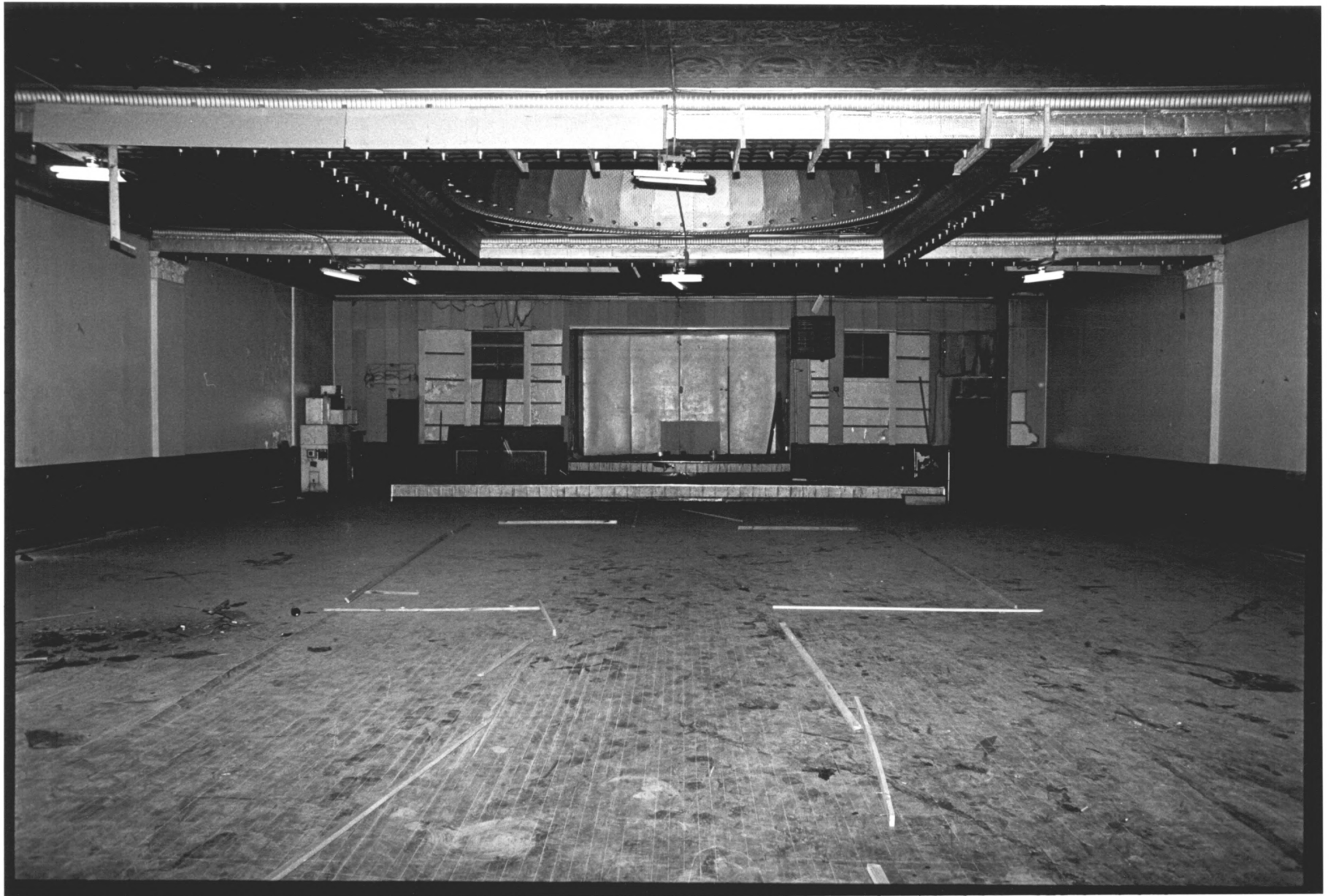
JACKIE SLUSS

MAY, 1982

STATE HISTORICAL SOCIETY OF NORTH DAKOTA, BISMARCK

SECOND FLOOR OFFICE, WEST BAY, LOOKING SOUTH

9 OF 11



E.G. PATTERSON BUILDING

412-414 EAST MAIN AVENUE, BISMARCK, NORTH DAKOTA

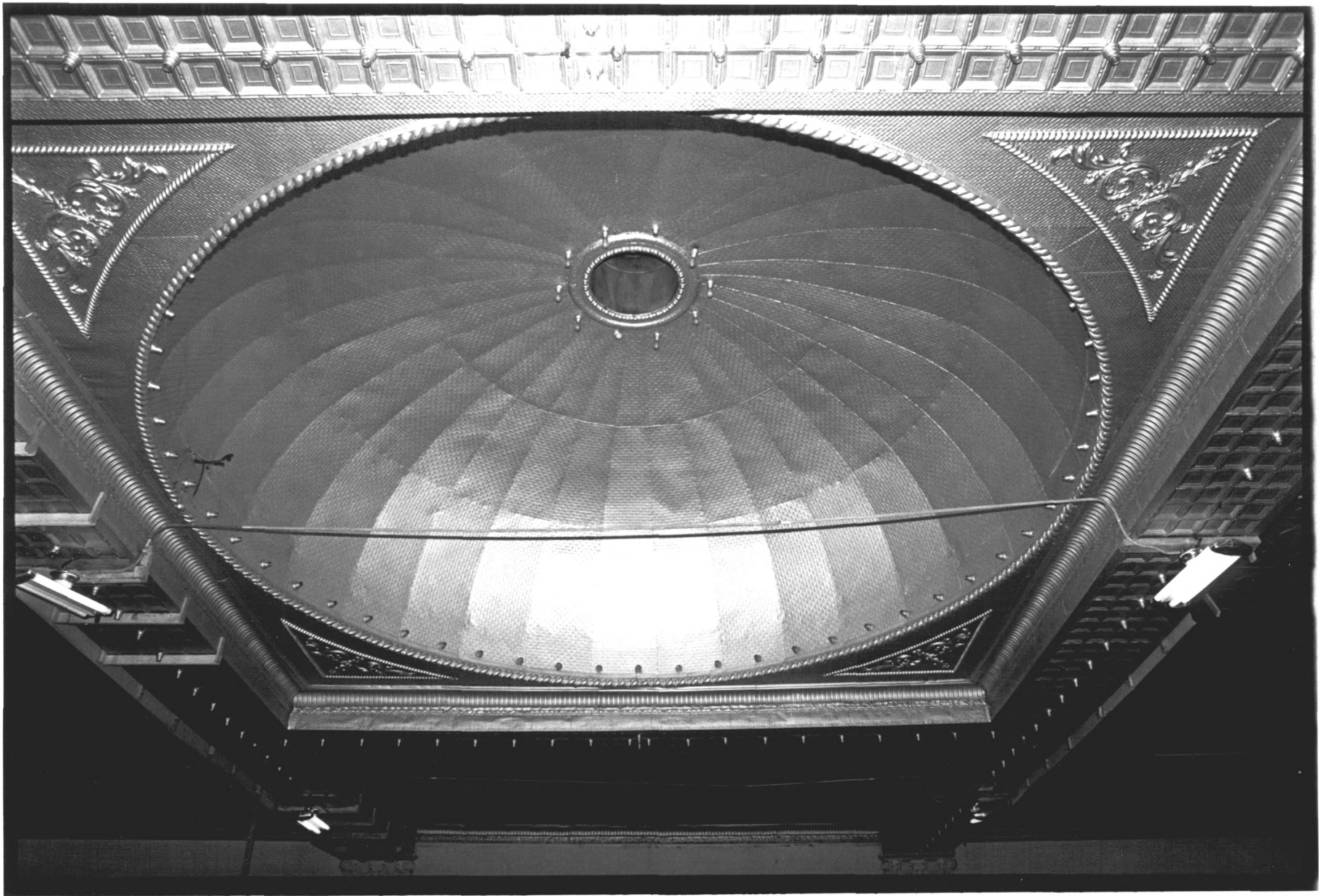
JACKIE SLUSS

MAY 1982

STATE HISTORICAL SOCIETY OF NORTH DAKOTA, BISMARCK

SECOND FLOOR BALLROOM, LOOKING NORTH

10 OF 11



E.G. PATTERSON BUILDING

412-414 EAST MAIN AVENUE, BISMARCK, NORTH DAKOTA

JACKIE SLUSS

MAY, 1982

STATE HISTORICAL SOCIETY OF NORTH DAKOTA, BISMARCK

SECOND FLOOR BALLROOM, CEILING DETAIL

11 OF 11