



The Salexno Apartments
2325 NE Flanders Street
Portland, Multnomah Co., Oregon 97232
Location: Looking North at South Entrance to Courtyard

Copy Negative :

Heritage Investment Corporation
123 NW Second Avenue #200
Portland, Oregon 97209

John Tess Photographer 1993

1 of 14



The Salexno Apartments
2325 NE Flanders Street
Portland, Multnomah Co., Oregon 97232
Location: Looking North at Southeast facade

Copy Negative :

Heritage Investment Corporation
123 NW Second Avenue #200
Portland, Oregon 97209

John Tess Photographer 1993

2 of 14



The Salexno Apartments
2325 NE Flanders Street
Portland, Multnomah Co., Oregon 97232
Location: Looking North at central tower

Copy Negative :

Heritage Investment Corporation
123 NW Second Avenue #200
Portland, Oregon 97209

John Tess Photographer 1993

3 of 14



The Salerno Apartments
2325 NE Flanders Street
Portland, Multnomah Co., Oregon 97232
Location: Inside Courtyard Looking Northeast

Copy Negative :

Heritage Investment Corporation
123 NW Second Avenue #200
Portland, Oregon 97209

John Tess Photographer 1993

2 of 14



The Salerno Apartments
2325 NE Flanders Street
Portland, Multnomah Co., Oregon 97232
Location: Inside Courtyard Looking Northeast

Copy Negative :

Heritage Investment Corporation
123 NW Second Avenue #200
Portland, Oregon 97209

John Tess Photographer 1993

5 of 14



The Salexno Apartments
2325 NE Flanders Street
Portland, Multnomah Co., Oregon 97232
Location: Looking Southwest at East and North Facades

Copy Negative :

Heritage Investment Corporation
123 NW Second Avenue #200
Portland, Oregon 97209

John Tess Photographer 1993

4 of 14



The Salexno Apartments
2325 NE Flanders Street
Portland, Multnomah Co., Oregon 97232
Location: Exterior detail, East Facade

Copy Negative :

Heritage Investment Corporation
123 NW Second Avenue #200
Portland, Oregon 97209

John Tess Photographer 1993

1 of 14



The Salexno Apartments
2325 NE Flanders Street
Portland, Multnomah Co., Oregon 97232
Location: Looking West at North Facade

Copy Negative :

Heritage Investment Corporation
123 NW Second Avenue #200
Portland, Oregon 97209

John Tess Photographer 1993

3 of 14



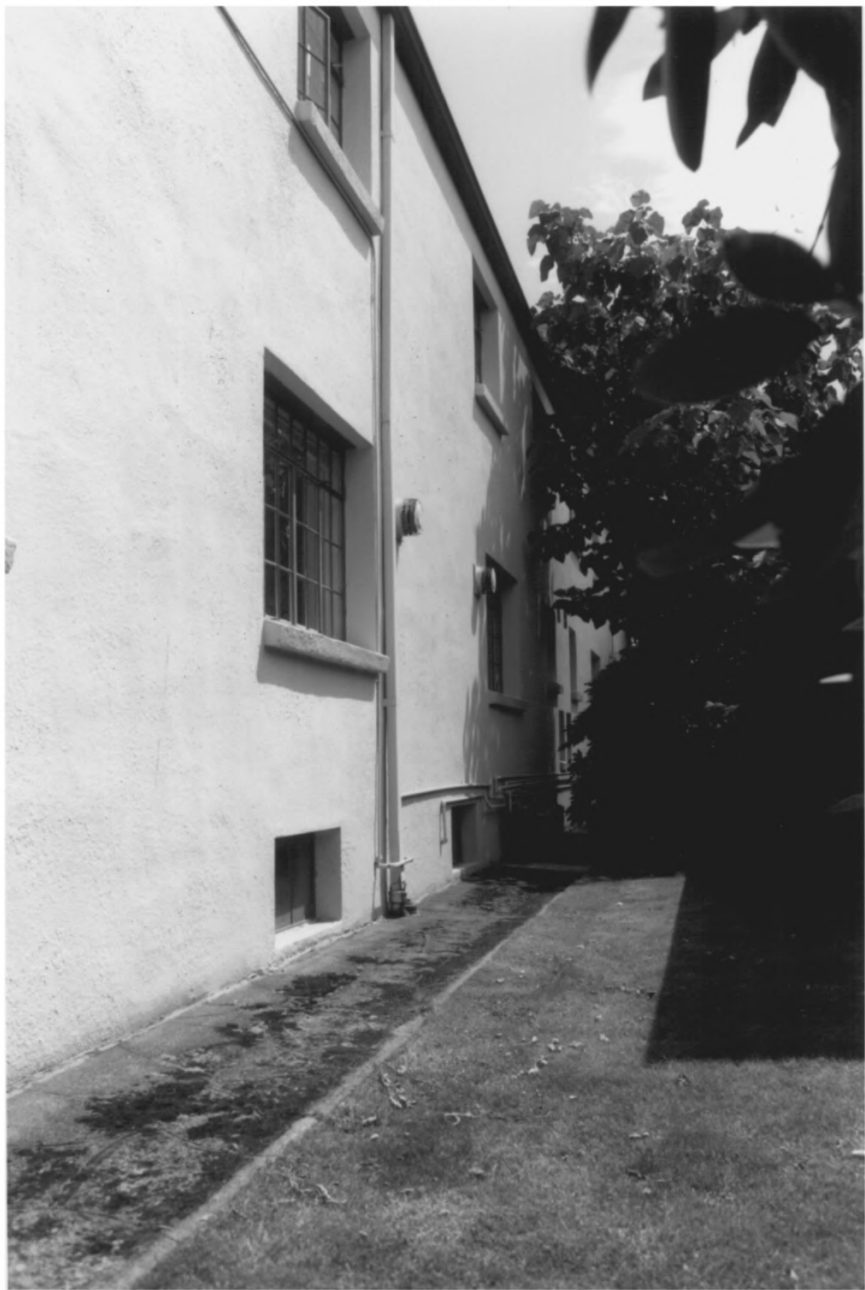
The Salexno Apartments
2325 NE Flanders Street
Portland, Multnomah Co., Oregon 97232
Location: Looking North at Southwest Facade

Copy Negative :

Heritage Investment Corporation
123 NW Second Avenue #200
Portland, Oregon 97209

John Tess Photographer 1993

7 of 14



The Salerno Apartments
2325 NE Flanders Street
Portland, Multnomah Co., Oregon 97232
Location: Looking South at West Facade

Copy Negative :

Heritage Investment Corporation
123 NW Second Avenue #200
Portland, Oregon 97209

John Tess Photographer 1993

10 of 14



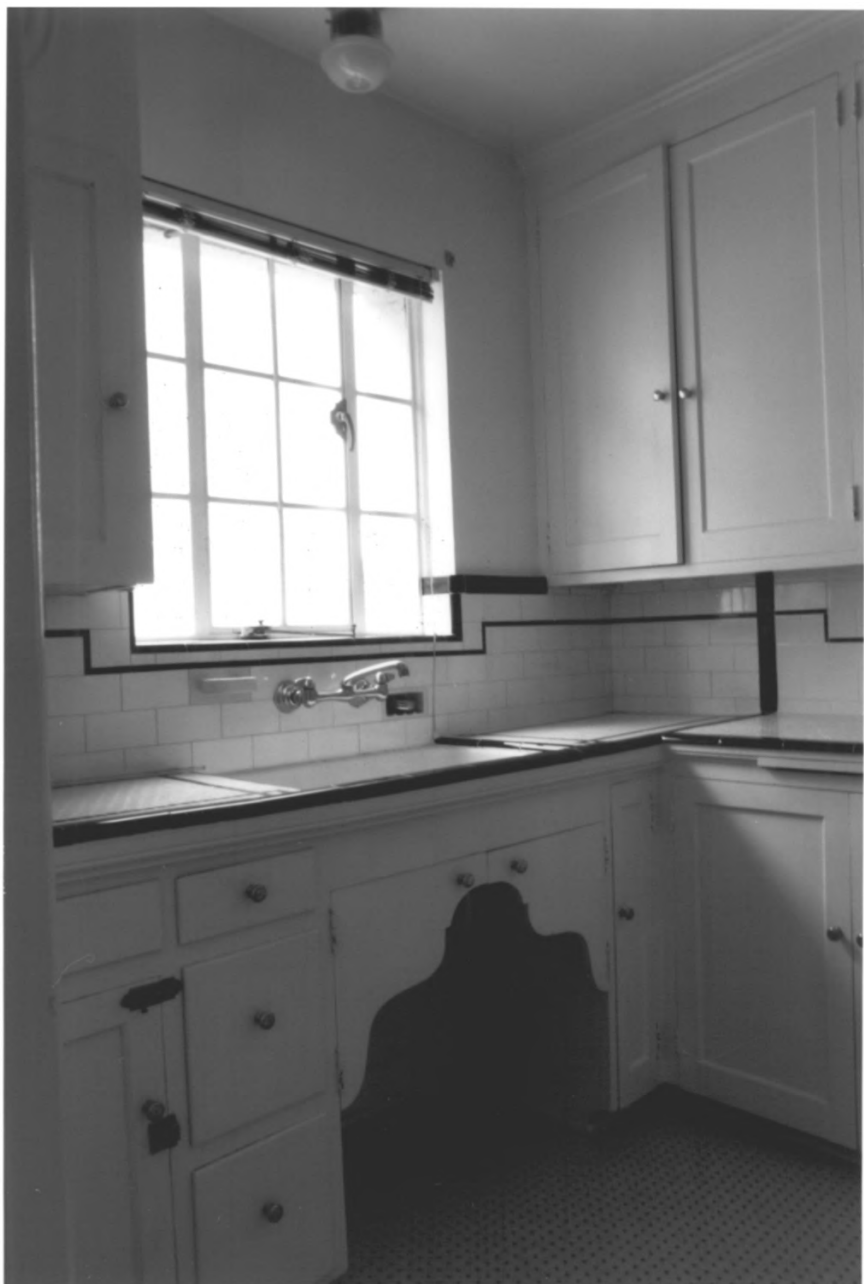
The Salexno Apartments
2325 NE Flanders Street
Portland, Multnomah Co., Oregon 97232
Location: Interior View, Looking north from
Living Room to Dining Room

Copy Negative :

Heritage Investment Corporation
123 NW Second Avenue #200
Portland, Oregon 97209

John Tess Photographer 1993

11 of 14



The Salexno Apartments
2325 NE Flanderns Street
Portland, Multnomah Co., Oregon 97232
Location: Interior Detail, Kitchen

Copy Negative :

Heritage Investment Corporation
123 NW Second Avenue #200
Portland, Oregon 97209

John Tess Photographer 1993

12 of 14



The Salexno Apartments
2325 NE Flanders Street
Portland, Multnomah Co., Oregon 97232
Location: Interior View, Second Floor Bedroom.

Copy Negative :

Heritage Investment Corporation
123 NW Second Avenue #200
Portland, Oregon 97209

John Tess Photographer 1993

13 of 14



The Salerno Apartments
2325 NE Flanders Street
Portland, Multnomah Co., Oregon 97232
Location: Interior Detail, bathroom

Copy Negative :

Heritage Investment Corporation
123 NW Second Avenue #200
Portland, Oregon 97209

John Tess Photographer 1993

12 of 12