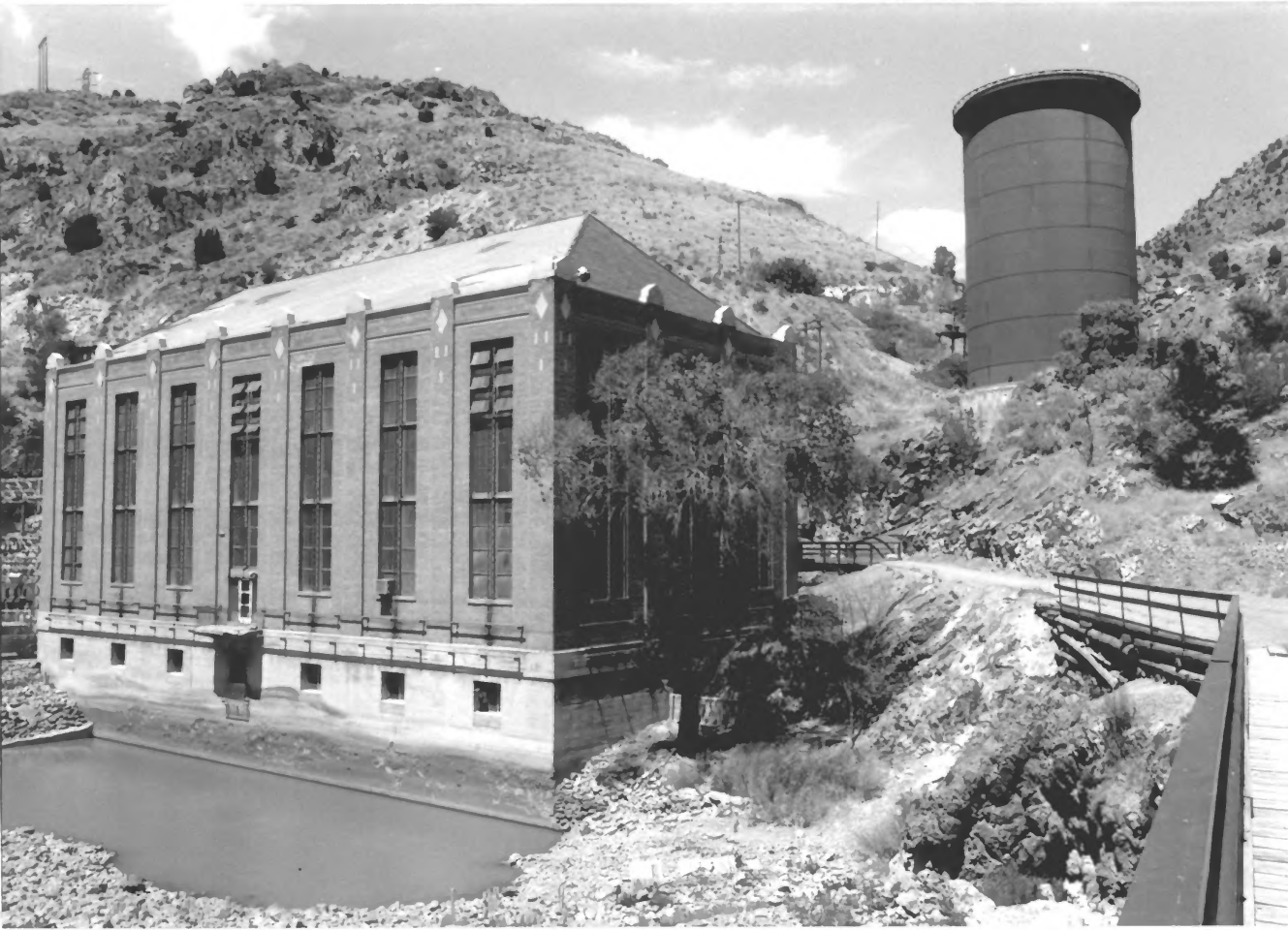


CUTLER POWER PLANT

R9 F12

PROD NO 1

Box 5000 County 04



CUTLER POWERHOUSE & SURGE TANK

R 8/F5 PHOTO NO. 2

1 Day Glad County, VT



CUTLER HISTORIC DISTRICT

DONELHOUSE INTERIOR

PHOTO NO. 3

R7 F17

Robert Allen Donnelly CT



SHOP, CUTLER DRAW HISTORIC DRAWING

PLATE NO. A

27/5/24

By S. J. ...





CUTLER DAM  $\frac{1}{2}$  CONDUIT

R 8 / F 8

PHOTO NO. 5

Bank Elevation Computed, 1944

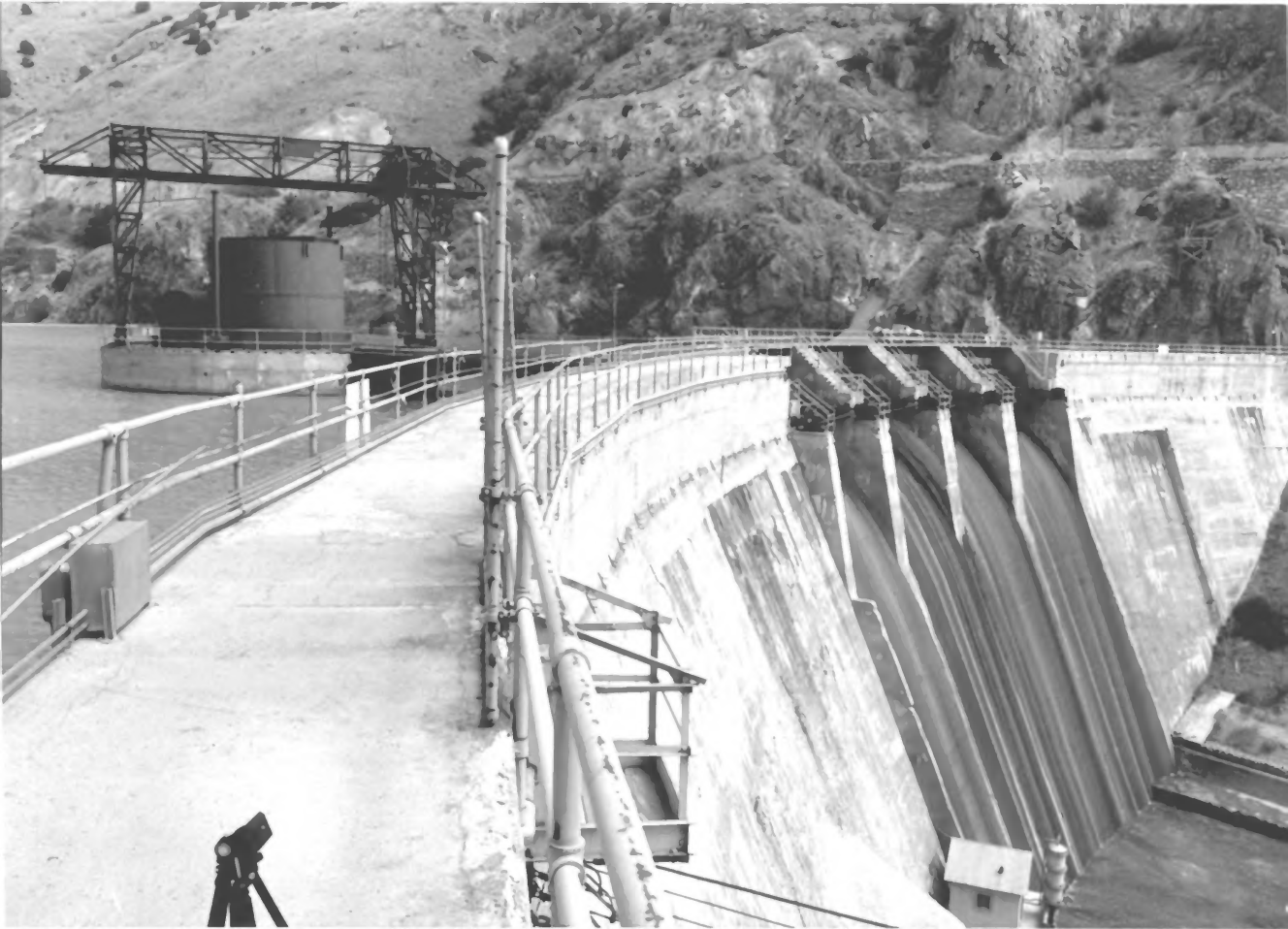


PHOTO NO. 6  
CUTLER DAM

R 8 / F 17 Boat Golden Co. UT



CUTLER DAM & CONDUIT

R 8 / F 27 PHOTO

NO. 7

Bay Eldon County VT



HOUSE AT CUTLER CAMP.

R.8/F 29 photo No. 9

Butt Blaker County, UT





HOUSE AT CUTLER CAMP

R 8/F 32 PHOTO No. 10

Bay Elshan County VT.



HOUSE AT CUTLER CAMP

R 81 F 30

PHOTO NO. 19

But Elder County VT