

PRICE \$150,000

Albert
McCUTCHEON-MILLER CORP.
 ATT.: R. J. McCUTCHEON, JR.
 33 - 4th ST. SOUTH
 ST. PETERSBURG, FLORIDA
 Tel.: ST. PETERSBURG 4138

PREVIEWS LISTING No. 42326

Previews Incorporated has made every effort to provide accurate information. Offering is subject to errors, omissions, prior sale, change, withdrawal without notice and approval of purchaser by owner.

TABLE OF FACTS

LOCATION: "Casa de Muchas Flores," in excellent residential section of St. Petersburg, Fla., 8 mi. from business section. Served by A.C.L. & S.A.L. Rwy's; airlines; good highways. Golf course and fine Gulf beaches nearby.

GROUNDS: Approx. 2 acres with 200' west frontage on Boca Ciega Bay. Bounded on East by 6 1/2' wrought iron fence; on 650' N. and S. boundaries and on West by 7' cyclone fence set in heavy cement base. Fully landscaped grounds—lawns, palms, oaks, citrus trees, shrubs and flowers.

RESIDENCE: 14 rooms (6mbr. 6b. 2 lavs; 3sbr. 3b). Spanish type. Henry Taylor, architect. Built 1925. Remodeled 1934. Redecorated and exterior repaired 1944. Tile construction; stucco covered. Concrete foundation. Tile roof. Steel casement windows. Tile and marble floors. Copper leaders, gutters, screens. Copper and galv. iron plumbing. Wall and floor tiled baths; built-in tubs; stall showers. Gas steam heating.

Open radiators. Duo-Therm hot water heater. P.S. electricity and gas. Artesian well (164' deep), and town water. Septic tank. Telephone.

FIRST FLOOR: Vestibule. Great Hall with fireplace and loggia opening to West flagstone terrace. Powder room. Lounge with fireplace, west screened porch, bar, lav., tackle room, storage room, tile GARAGE—all connecting. Breakfast room. Library. East screened porch. Dining room with fireplace. Service quarters. Modern kitchen, 2 elec. dishwashers; butler's pantry, 2 servants' bedrooms, both with bath, back stairs attached 1-car GARAGE with servants' room and bath.

SECOND FLOOR: 6 master bedrooms—each has private bath, 2 have dressing rooms. Sleeping porch 2 sun decks. Closets (several cedar-lined) are generous throughout.

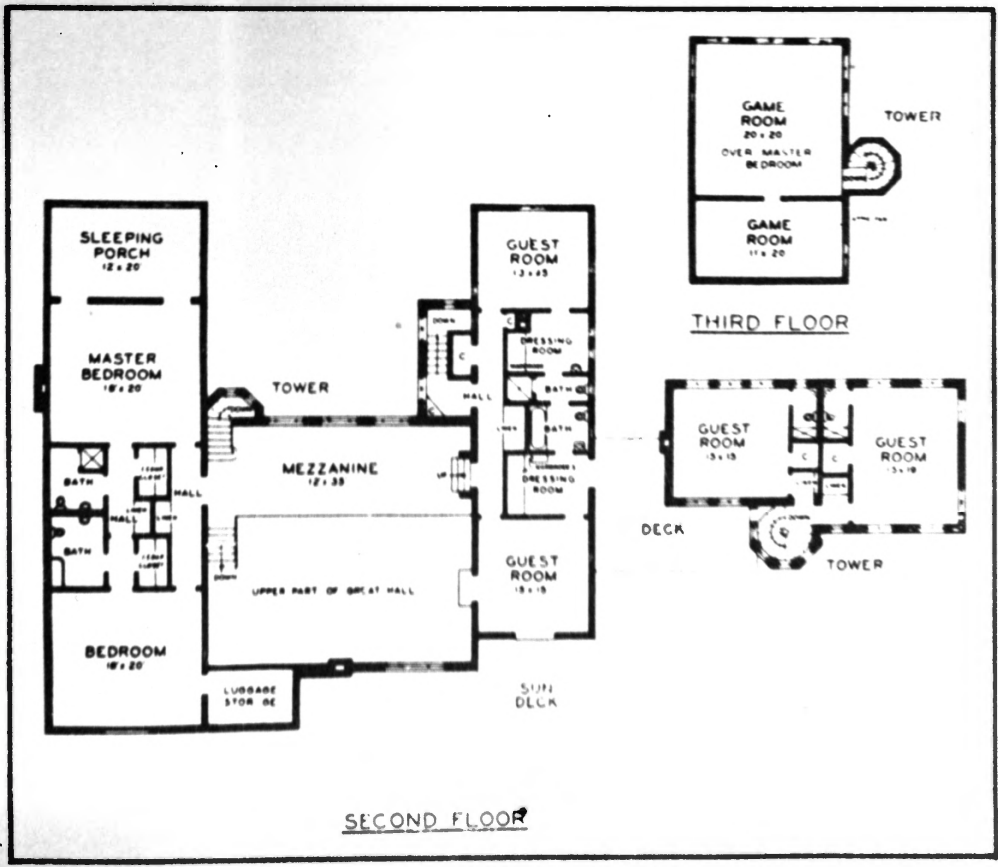
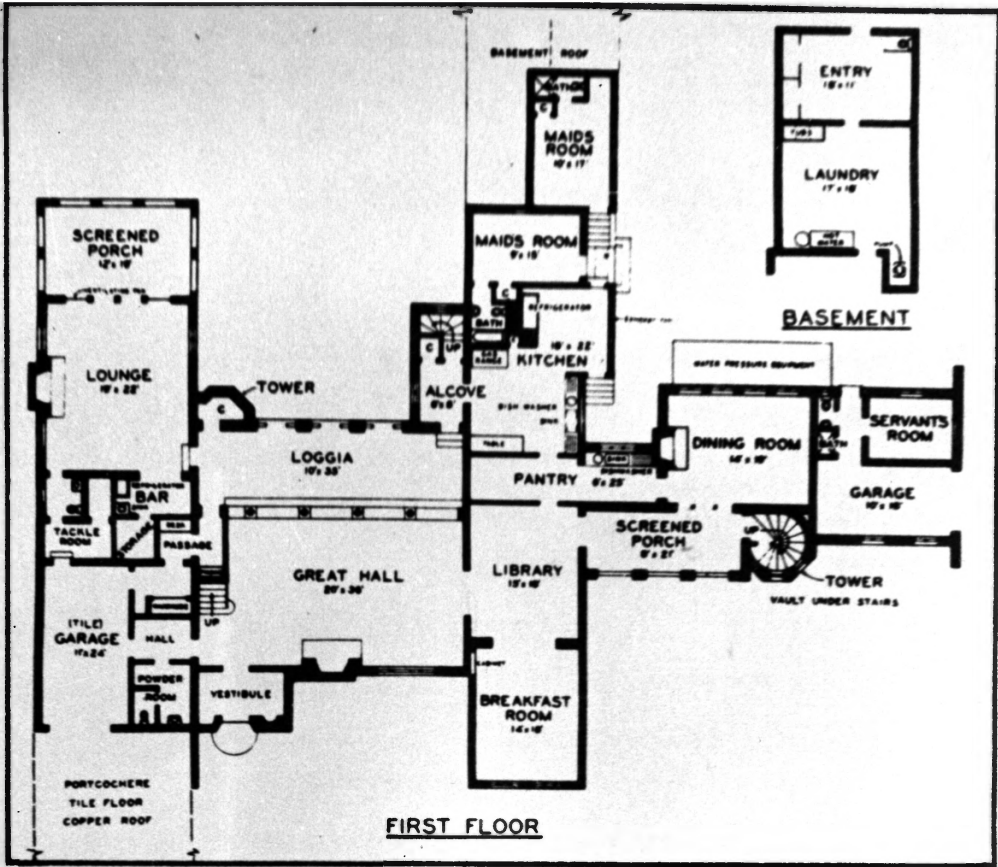
THIRD FLOOR: 2 game rooms. **BASMENT:** 3 tub laundry. Heating units.

GARAGE: Detached. For 2 cars.

MORTGAGE: Free and Clear. **TAXES:** \$2,160.15

1. Casa de Muchas Flores.
2. 1446 Park St., St. Petersburg, (Pinellas County), Florida.
3. Lynn Homan (copywork).
4. 1950.
5. Lynn Homan.
6. Map of Grounds - detail of sales brochure 1950.
7. Photo #1 of 17.

A BAY



CYCLONE FENCE

ORTH

1. Casa de Muchas Flores.
2. 1446 Park St., St. Petersburg, (Pinellas County), Florida.
3. Lynn Homan (copywork).
4. 1950.
5. Lynn Homan.
6. Floor plans - detail of sales brochure - 1950.
7. Photo #2 of 17.



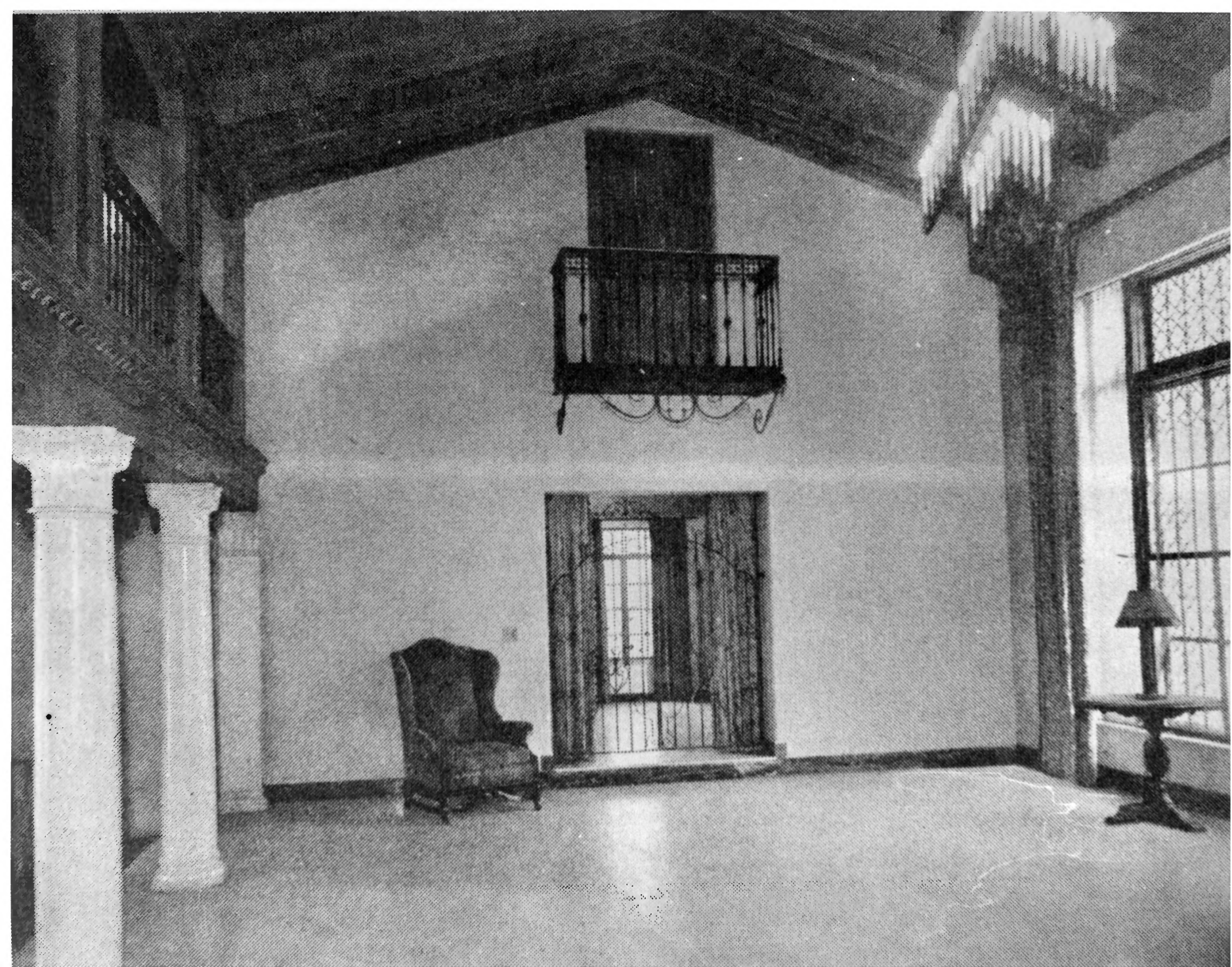
1. Casa de Muchas Flores.
2. 1446 Park St., St. Petersburg, (Pinellas County), Florida.
3. Lynn Homan (copywork).
4. 1950.
5. Lynn Homan.
6. Entrance Gates, East Facade - detail from sales brochure - 1950.
7. Photo #3 of 17.



1. Casa de Muchas Flores.
2. 1446 Park St., St. Petersburg, (Pinellas County), Florida.
3. Lynn Homan (copywork).
4. 1950.
5. Lynn Homan.
6. East Facade - detail from sales brochure
1950
7. Photo #4 of 17.



1. Casa de Muchas Flores.
2. 1446 Park St., St. Petersburg, (Pinellas County), Florida.
3. Lynn Homan (copywork).
4. 1950
5. Lynn Homan.
6. Great Hall - detail from sales brochure - 1950.
7. Photo #5 of 17.



1. Casa de Muchas Flores.
2. 1446 Park St., St. Petersburg, (Pinellas County), Florida.
3. Lynn Homan (copywork).
4. 1950.
5. Lynn Homan.
6. Great Hall - detail from sales Brochure - 1950.
7. Photo #6 of 17.



1. Casa de Muchas Flores.
2. 1446 Park St., St. Petersburg, (Pinellas County), Florida.
3. Lynn Homan (copywork).
4. 1950.
5. Lynn Homan.
6. Lounge Room - detail from sales brochure-1950.
7. Photo #7 of 17.



1. Casa de Muchas Flores.
2. 1446 Park St., St. Petersburg, (Pinellas County), Florida.
3. Lynn Homan (copywork).
4. 1950.
5. Lynn Homan.
6. Library and Breakfast Room - detail from sales brochure - 1950.
7. Photo #8 of 17.



1. Casa de Muchas Flores
2. I446 Park St., St Petersburg
Pinellas County, Florida
3. Howard Hansen
4. I984
5. Howard Hansen
6. East Facade
7. Photo #9 of I7



1. Casa de Muchas Flores
2. 1446 Park St., St Petersburg
Pinellas County, Florida
3. Howard Hansen
4. 1984
5. Howard Hansen
6. East Facade
7. Photo # IO of I7



1. Casa de Muchas Flores
2. I446 Park St., St Petersburg
Pinellas County, Florida
3. Howard Hansen
4. 1984
5. Howard Hansen
6. East Facade (Entrance)
7. Photo #II of I7



1. Casa de Muchas Flores
2. I446 Park St., St Petersburg
Pinellas County, Florida
3. Howard Hansen
4. I984
5. Howard Hansen
6. North Facade
7. Photo #I2 of I7



1. Casa de Muchas Flores
2. I446 Park St., St Petersburg
Pinellas County, Florida
3. Howard Hansen
4. 1984
5. Howard Hansen
6. West Facade (North Wing)
7. Photo # I3 of I7



1. Casa de Muchas Flores
2. I446 Park St., St Petersburg,
Pinellas County, Florida
3. Howard Hansen
4. I984
5. Howard Hansen
6. West Facade
7. Photo #I4 of I7



1. Casa de Muchas Flores
2. I446 Park St., St Petersburg,
Pinellas County, Florida
3. Howard Hansen
4. I984
5. Howard Hansen
6. West Facade, detail of tower
7. Photo # I5 of I7



1. Casa de Muchas Flores
2. I446 Park St. St Petersburg,
Pinellas County, Florida
3. Howard Hansen
4. 1984
5. Howard Hansen
6. West Facade, detail of SW corner
7. Photo # I6 of I7



1. Casa de Muchas Flores
2. I446 Park St., St Petersburg,
Pinellas County, Florida
3. Howard Hansen
4. I984
5. Howard Hansen
6. Garage and Greenhouse
7. Photo # I7 of I7