

1880

Judge Daniel Breck House
Richmond, Kentucky *Madison Co.*
ca. 1880

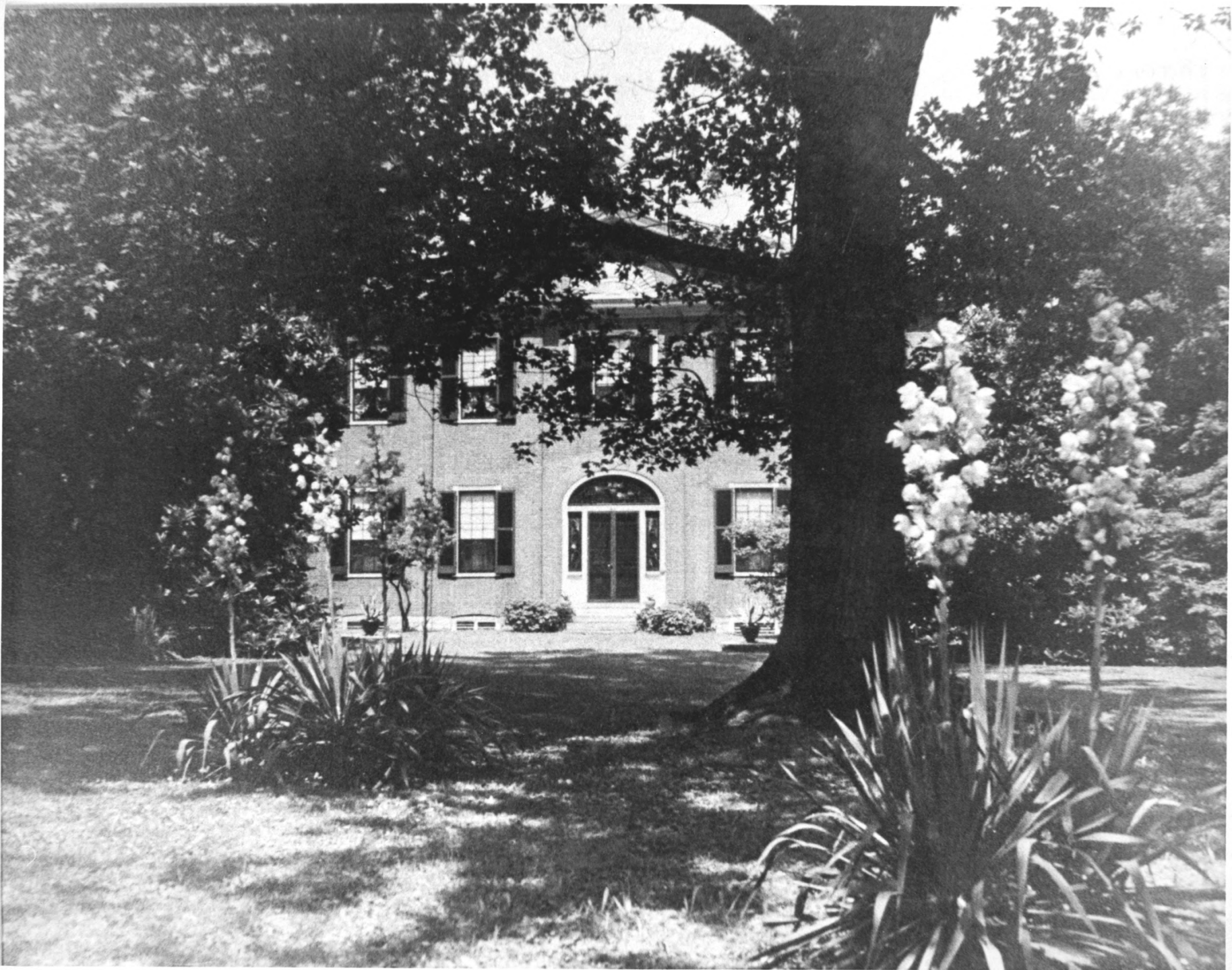
Photo 1

Early view from northeast.

Showing porch presumed to have
been Victorian addition.

NOV 7 1976

JUL 13 1976



1956

Judge Daniel Breck House

Richmond, Kentucky *Madison Co.*

ca. 1956

JUL 13 1976

Photo 2.

NOV 7 1976

Facade from east.



Judge Daniel Breck House

Richmond, Kentucky. *Madison Co.*

Gloria Mills

May 1976

Kentucky Heritage Commission

104 Bridge Street

Frankfort, Kentucky.

Photo 3.

Facade from east showing present
landscaping.

JUL 13 1976

NOV 7 1976



Judge Daniel Breck House *Madison Co.*
Richmond, Kentucky.

Gloria Mills May 1976
Kentucky Heritage Commission
104 Bridge Street

Frankfort, Kentucky.

Photo 4 .

Central gabled feature of facade. Note
the exquisite Federal gougework
treated as dentillation and the geo-
metric reeded frames.



Judge Daniel Breck House

Richmond, Kentucky. *Madison Co.*

Gloria Mills

May 1976

Kentucky Heritage Commission

104 Bridge Street

Frankfort, Kentucky

Photo 5

View from the southeast showing
the rear of the main block (note
story extension of ell.

bond on both sides and rear
walls); two-story ell; and one story
extension of ell.

NOV 7 1976

JUL 13 1976



Judge Daniel Breck House

Richmond, Kentucky. *Madison Co.*

Gloria Mills

May 1976

Kentucky Heritage Commission

104 Bridge Street.

Frankfort, Kentucky

Photo 6

Main entrance on east facade.

The colored glass panels were
inserted about the turn of the

century

JUL 13 1976



Judge Daniel Breck House

Richmond, Kentucky. *Madison Co.*

Gloria Mills

May 1976

Kentucky Heritage Commission

104 Bridge Street

Frankfort, Kentucky..

Photo 7.

View of extended ell from south.

JUL 13 1976