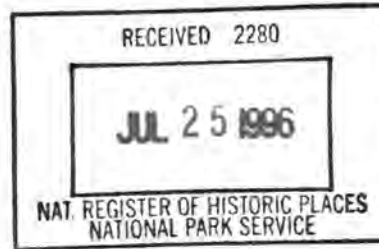


924

**United States Department of the Interior  
National Park Service**



**National Register of Historic Places  
Registration Form**

This form is for use in nominating or requesting determinations for individual properties and districts. See instructions in How to Complete the National Register of Historic Places Registration Form (National Register Bulletin 16A). Complete each item by marking "x" in the appropriate box or by entering the information requested. If any item does not apply to the property being documented, enter "N/A" for "not applicable." For functions, architectural classification, materials, and areas of significance, enter only categories and subcategories from the instructions. Place additional entries and narrative items on continuation sheets (NPS Form 10-900a). Use a typewriter, word processor, or computer, to complete all items.

**1. Name of Property**

historic name Brown Stocking Mill Historic District

other names/site number N/A

**2. Location**

street & number 24-32 Broadway Ave., 3-41 Brownville Ave., 10 Burleigh Ave.,  
3-5 Burleigh Place, and 35-47 Topsfield Road N/A not for publication

city or town Ipswich N/A vicinity

state Massachusetts code MA county Essex code 009 zip code 01938

**3. State/Federal Agency Certification**

As the designated authority under the National Historic Preservation Act of 1986, as amended, I hereby certify that this  nomination  request for determination of eligibility meets the documentation standards for registering properties in the National Register of Historic Places and meets the procedural and professional requirements set forth in 36 CFR Part 60. In my opinion, the property  meets  does not meet the National Register Criteria. I recommend that this property be considered significant  nationally  statewide  locally. ( See continuation sheet for additional comments.)

Judith B. McDonough 7/11/96  
Signature of certifying official/Title Judith B. McDonough, Executive Director Date  
Massachusetts Historical Commission, State Historic Preservation Officer

State or Federal agency and bureau

In my opinion, the property  meets  does not meet the National Register criteria. ( See continuation sheet for additional Comments.)

Signature of certifying official/Title \_\_\_\_\_ Date \_\_\_\_\_

State or Federal agency and bureau

**4. National Park Service Certification**

I, hereby certify that this property is:

- entered in the National Register  See continuation sheet.
- determined eligible for the National Register  See continuation sheet.
- determined not eligible for the National Register
- removed from the National Register
- other (explain): \_\_\_\_\_

Edson H. Beall \_\_\_\_\_  
Signature of the Keeper Date of Action  
entered in the  
National Register

Name of Property

County and State

5. Classification

Ownership of Property

(Check as many boxes as apply)

- private
- public-local
- public-State
- public-Federal

Category of Property

(Check only one box)

- building(s)
- district
- site
- structure
- object

Number of Resources within Property

(Do not include previously listed resources in the count.)

Contributing	Noncontributing	
42	22	building
0	1	sites
0	0	structures
0	0	objects
42	23	Total

Name of related multiple property listing

(Enter "N/A" if property is not part of a multiple property listing.)

Number of contributing resources previously listed in the National Register

0

6. Function or Use

Historic Functions

(Enter categories from instructions)

- INDUSTRY/manufacturing facility
- DOMESTIC/single dwelling
- DOMESTIC/multiple dwelling
- COMMERCE/specialty store

Current Functions

(Enter categories from instructions)

- INDUSTRY/manufacturing facility
- DOMESTIC/single dwelling
- DOMESTIC/multiple dwelling
- COMMERCE/specialty store
- COMMERCE/professional

7. Description

Architectural Classification

(Enter categories from instructions)

- LATE VICTORIAN/Queen Anne
- OTHER/no style; early 20-th-Century
- Industrial

Materials

(Enter categories from instructions)

- foundation concrete
- walls SYNTHETIC/vinyl
- WOOD/weatherboard
- roof SLATE/ASPHALT
- other N/A

Narrative Description

(Describe the historic and current condition of the property on one or more continuation sheets.)

See continuation sheets

United States Department of the Interior  
National Park Service

## National Register of Historic Places Continuation Sheet

Brown Stocking Mill Historic District  
Ipswich (Essex County), Massachusetts

Section number 7 Page 1

### 7. DESCRIPTION

The Brown Stocking Mill Historic District is a well-preserved example of a small-scale industrial community that provides a visual record of Ipswich's stocking making industry. Comprised of a mill building and a cohesive group of tenement dwellings, the district also illustrates the close relationship of immigrant workers to their source of employment.

The core of the district is formed by the mill building, which is set on a large wooded lot atop a small hill. The tenement dwellings emanate from the mill in a linear fashion down the slope of Brownville Avenue, and at a right angle on a section of land bordered by Broadway Avenue, Burleigh Avenue and Burleigh Place. The tenements are typically gable front houses ranging from 1 1/2 to 2 1/2 stories high that are set close to the street on narrow lots, some with deep back yards; few lots contain garages. Landscaping on the front of the lots is limited. A few trees are located on the rear portions of some lots, particularly on the larger lots. The similar form and placement of the houses gives the district a very cohesive, uniform appearance. (See photograph #2.) Today these tenements serve as single-family residences and one commercial building; however, during the primary focus of the period of significance (1907 to 1914), these dwellings served as mill tenements for immigrant workers.

The district is an example of an early 20th century industrial community, retaining its basic scale, form, and spatial interrelationships. The mill building retains its original form with the exception of a few additions constructed in the mid-20th century and the removal of a small shipping room on the north side facade of the mill. Remnants of most of the original outbuildings/structures associated with the mill remain. (See sketch map.) Changes to the tenement dwellings include the addition of synthetic siding, new window sashes, asphalt shingled roofs, and enclosed porches on many buildings. Fortunately, some buildings retain their original materials and design features, illustrating the original appearance of their neighbors.

#### Location

The Brown Stocking Mill Historic District is located in a dense residential section west of Ipswich's town center. It is bounded on its south by Topsfield Road, a main road leading west of the town, and is bordered on its north, west, and east sides by residential areas which post-date the Brown Stocking Mill development.

#### Development

Development in the district began around the turn of the century when Harry B. Brown purchased undeveloped plots of land (most likely wooded) to the immediate north of Topsfield Road on what was then the western edge of the town. His original land acquisition was more than double the size of the current district, and included land purchased from the Farley family, which was very active in

(Continued)

United States Department of the Interior  
National Park ServiceNational Register of Historic Places  
Continuation SheetBrown Stocking Mill Historic District  
Ipswich (Essex County), MassachusettsSection number 7 Page 2

Ipswich's industrial development. (See Plan of House Lots in Ipswich.)

At the time of Brown's purchase, only three streets were laid out on his land. They included two that are located in the district: Topsfield Road and Agawam Street (later called Broadway Avenue). Brown began developing his property by laying out a series of new streets, including Brownville Avenue, Burleigh Avenue, and Burleigh Place (all located in the district). Maps indicate there were no existing buildings on the land when Brown purchased it, but by the end of 1907, he completed construction of a mill building and several tenements in the district along Topsfield Road and Brownville Avenue. (See Plan of House Lots in Ipswich.)

A second group of tenements was constructed in the northern portion of the district on Brownville Avenue, Broadway Avenue, Burleigh Avenue, and Burleigh Place between 1907 and 1910. (See Assessor's map 41B.) Most likely this construction was completed before 1910 when Brown was experiencing serious financial difficulties. Since the construction of these tenements, only three houses have been built in the district. These houses include **39 Topsfield Road** (ca. 1920; #39), **31 Brownville Avenue** (ca. 1960; #14), and **37 Brownville Avenue** (ca. 1980; #12). The houses at 31 and 37 Brownville Avenue were constructed on the site of earlier dwellings (ca. 1920) that were either moved, demolished, or destroyed by fire. They are the only noncontributing dwellings in the district, making it remarkably free of intrusions.

### Architecture

#### Industrial Structures

The **Brown Stocking Mill** (28 Brownville Avenue; ca. 1907; #1; photograph #1) serves as the core of the historic district, and is a well-preserved example of early 20th-century industrial architecture in Ipswich.

The original mill complex was constructed ca. 1907 and composed of one main building with several annexes, including an office, power house, coal shed, paper box shop, and shipping room. Another annex referred to as both a dye house and knitting annex was added ca. 1910. With the exception of the small shipping room, all sections of the complex are present. Additions to the mill include a ca. 1950 extension of the office area, and three small additions to the front facade constructed ca. 1965. The office extension is compatible with the original mill building, and the small additions are constructed of materials similar to those of the original mill complex. Thus, these changes do not significantly impact the mill's integrity. (See sketch map.)

Located at the top of a hill and set back on a 5 5/8 acre wooded lot bordering the west side of Brownville Avenue, the mill is surrounded by an unpaved parking area on its front and side facades. An unpaved road runs parallel with the mill's rear facade. The mill rises from what appears to be a concrete block foundation and is topped with built-up tar roofing. For the most part, the mill complex is sheathed in wooden clapboards or wooden shingles. The mill retains many of its original 6/6 sash

(Continued)

United States Department of the Interior  
National Park ServiceNational Register of Historic Places  
Continuation SheetBrown Stocking Mill Historic District  
Ipswich (Essex County), MassachusettsSection number 7 Page 3

windows, and is characterized by gently sloping roof lines and an absence of ornamentation. Changes to the building include blocked openings and the addition of modern entrance and garage doors.

The mill's main building is a large rectangular block sheathed in wooden clapboards that runs parallel with Brownville Avenue. The rectangle's southern section is composed of a gable front, three story section with closely spaced original fenestration on all stories. It is connected to a long two story, gable side section with a monitor roof. Fenestration is regularly placed on this section, and some windows, including most on the monitor, are blocked. (See photograph #1.)

The front east facade of the mill is dominated by the main mill building. This main section was extended on its southern end ca. 1950 when part of the original office annex was enlarged by a two bay, two story addition with a flat roof set on a tall basement. Other auxiliary sections to the front facade of the main building include a small one story shop entrance constructed ca. 1907 that is centered on the facade and is clad in clapboards with modern casement windows and door. Adjoining the north end of the shop entrance are a two story garage and a small one story addition. Both are sheathed in shiplap siding, and were constructed ca. 1965. Another one story addition is located near the northern end of the front facade. (See sketch map.) Modern windows and a garage door have been added to the northern end of the front facade.

The narrow north facade of the mill structure is clad in wooden shingles and formed by the monitor roof rising above a two story gable section. It includes a centered entrance covered with a one story porch, constructed after 1961, and one blocked window on the east side of the first floor. The small shipping room connected to the northwest corner of this facade was removed after 1961. (See sketch map.)

The rear west facade of the main mill building was originally and still is dominated by several closely spaced, one story annexes constructed ca. 1907 and ca. 1910. The paper box annex (ca. 1907) located on the northern side of the rear facade is clad in wooden shingles, has a gable roof, and has blocked basement openings and original first floor openings. The one story power house (ca. 1907) located in the center of the rear facade retains its original coal shed and has a large replacement garage door. Located on the southern end of the rear facade, the knitting annex (ca. 1910) is sheathed in wooden shingles, and has a gable roof and blocked window openings. (See sketch map.)

The south side facade of the mill complex is dominated by the two story office addition constructed ca. 1950 and a portion of the small, one story office annex built ca. 1907. The 1950 addition includes a one story pedimented entrance porch on the east portion of the facade. All sections are clad in wooden sheathing. Regularly placed fenestration includes original 1/1 sash windows on the ca. 1907 annex, and 6/6 sash windows on the 1950 addition that match those on the rest of the building.

Some remnants of the original outbuildings and a reservoir tank exist on the large lot surrounding the mill complex. The original buildings include a stable (#1a), open storage building (#1b), garage, and

(Continued)

United States Department of the Interior  
National Park Service

# National Register of Historic Places Continuation Sheet

Brown Stocking Mill Historic District  
Ipswich (Essex County), Massachusetts

Section number 7 Page 4

reservoir tank (all ca. 1907.) Portions of the stable and open storage area are extant on the northwest corner of the lot. Also extant are the footings for the reservoir tank on the southwest portion of the lot. The garage (ca. 1907), originally located on the southeast corner of the lot, is not extant.

### Housing Types and Characteristics

Forty-two tenements were built for the Brown Stocking Mill workers on Topsfield Road, Brownville Avenue, Broadway Avenue, Burleigh Avenue, and Burleigh Place. These tenements are very uniform, utilitarian dwellings with little ornamentation. They are characterized by cornice returns; 2/2 sash windows with simple architrave molding; turned porch posts or square porch posts; and chimneys with corbelling at the top of the stack. Approximately half of the houses retain their original slate roofs, and several of the houses also retain their original wooden clapboards or shingles. Concrete block foundations, often with parging, predominate in the district. A 1917 advertisement for the mill and the workers housing shows the dwellings originally had shutters and front porches. Today most of the houses have either no shutters or replacement shutters, and many of the front porches have been enclosed.

Typically, the tenements were built in a limited number of forms. The types include the following:

- TYPE I: Compact, 1 1/2 story, gable front, single-family dwelling;
- TYPE II: 1 1/2 story, gable front, single-family dwelling;
- TYPE III: 2 1/2 story, gable front, single- or multiple-family dwelling;
- TYPE IV: Miscellaneous multiple-family dwellings; and
- TYPE V: Miscellaneous single-family dwellings.

### TYPE I — Compact 1 1/2 story, gable front, single-family dwelling

Two Type I **Mill Tenements** were constructed as part of the Brown Stocking workers housing development. They are both located near the bottom of the hill at 3 and 7 Brownville Avenue (both ca. 1907, #36 and #33). This type is very similar to the Type II house, yet it merits a separate Type category given its very compact appearance.

The **Mill Tenement** at 3 Brownville Avenue (ca. 1907, #36, photograph #3) is a well-preserved example of a Type I house built in the district. This compact, 1 1/2 story, gable front house with cornice returns sits on a high brick foundation and is topped with an asphalt shingled roof. The house retains its original clapboard siding and small 6/6 sash windows, unlike most houses in the area which have 2/2 sashes. The front west facade of the house is dominated by a one story porch with square posts and a balustrade enclosed with shiplap siding (replacing the original turned balusters). Side stairs lead to a side hall entrance on the front facade where two windows are located on each floor. The north and south side facades of the dwelling each have two 6/6 sash placed near the rear of the house. A small covered rear facade porch leads to a back entrance.

(Continued)

United States Department of the Interior  
National Park ServiceNational Register of Historic Places  
Continuation SheetBrown Stocking Mill Historic District  
Ipswich (Essex County), MassachusettsSection number 7 Page 5TYPE II — 1 1/2 story, gable front, single-family dwelling

With over 20 houses constructed in the Type II style, this type dominates the historic district. The Type II **Mill Tenements** include the following:

- 9, 11, 12, 14, 16, 18, 20, 22, 24, 26 Brownville Avenue (ca. 1907; #32, 30, 29, 27, 25, 23, 21, 19, 17, and 15);
- 39, 41 Brownville Avenue (ca. 1908; #2 and 3);
- 24, 26, 28, 30, 32 Broadway Avenue (ca. 1908; #8, 7, 6, 5, and 4);
- 10 Burleigh Avenue (ca. 1908; #9); and
- 3, 5 Burleigh Place (ca. 1908; #10 and 11).

The **Mill Tenement** at 26 Brownville Ave. (ca. 1907; #15; photograph #4) is a typical example of Type II. The 1 1/2 story gable front dwelling rises from a parged concrete block foundation, and is topped by a slate roof. Clad in synthetic siding, the house retains its original 2/2 sashes and cornice returns. The front east facade features a two bay, one story porch with an enclosed wooden apron, square balusters, and chamfered posts supporting a shed roof. A porch stairway leads to the front side hall entrance. Windows (one on the first floor and two on the second floor) are symmetrically placed. A small 6/1 sash and 2/2 sash are asymmetrically placed on the north facade, and two 2/2 sashes are symmetrically located on the south facade. The rear facade has an enclosed one story, one bay porch on its northern end, which is a typical addition found in the district.

The ten tenements clustered on the northern point of the district (see Assessor's map 41B) were built as a group ca. 1908 shortly after completion of the ca. 1907 group of tenements. These later tenements are all Type II; however, these later houses are typically differentiated from the earlier ones by large wall dormers, high basement foundations with windows, and larger modern additions. The **Mill Tenement** at 28 Broadway Avenue (ca. 1908; #6) is typical of the tenements in the northern portion of the district. The 1 1/2 story gable front dwelling rises from a high parged concrete block foundation, and is topped by an asphalt shingled roof. Clad in synthetic siding, the house has replacement 1/1 sashes. The front north facade has an enclosed front porch with a side entrance leading to the front main entrance. Two windows are symmetrically placed on the second floor. Large wall dormers, each with two windows are placed in the center of each of the side facades. The rear facade has an enclosed porch covering the entire first floor facade.

TYPE III — 2 1/2 story, gable front, single- or multiple-family dwelling

The Type III **Mill Tenements** constructed in the district include the following:

- 4, 6-8, 10, 13, 15, 19, 21, 23, 25 Brownville Avenue (ca. 1907; #35, 34, 31, 28, 26, 22, 20, 18, and 16); and
- 41, 43, 45 Topsfield Road (ca. 1907; #40, 41, and 42).

These houses serve as both single-family and duplex dwellings. Typically, the houses on Topsfield

(Continued)

United States Department of the Interior  
National Park Service

# National Register of Historic Places Continuation Sheet

**Brown Stocking Mill Historic District  
Ipswich (Essex County), Massachusetts**

Section number 7 Page 6

Road exhibit more ornamentation than those found on Brownville Avenue. These decorative elements include scrolled porch brackets and decorative balusters on the **Mill Tenements** at 41, 43 and, 45 Topsfield Avenue (ca. 1907; #40, 41, and 42; see photograph #6), and bay windows found on the south and west facades of 43 Topsfield Avenue.

The **Mill Tenement** at 4 Brownville Avenue (ca. 1907; #35; photograph #5) is typical of the Type III houses built on Brownville Avenue. It is a large 2 1/2 story gable front house set on a concrete block foundation and topped with an asphalt shingled roof. Although sheathed in synthetic siding, a piece of the eaves fascia has fallen off, revealing a bargeboard decorated with recessed panels that matches the one on the Queen Anne style house at 47 Topsfield. (See the Type V description.) The house has replacement 1/1 sash and an enclosed front porch with small modern casement windows. A side entrance on the porch leads to the front main entrance. Openings are symmetrically placed on the front facade. The south side facade has a one story, first floor bay window with right angles that has been enclosed in siding, covering the windows on the south side of the bay. Fenestration on the north side facade is asymmetrically placed, and includes 1/1 sash, a small fixed pane window, and modern windows.

#### TYPE IV: Miscellaneous multiple-family dwellings

Type IV tenements are unique in the area given their large size. Most likely constructed as boarding houses for mill operatives, the two Type IV **Mill Tenements** in the district are 33-35 Brownville Avenue (ca. 1908; #13) and 35 Topsfield Road (ca. 1907; #37).

Clad in its original clapboards and retaining many original 2/2 sash, the Mill Tenement at 33-35 Brownville Avenue is a gable front building with cornice returns that sits on a parged concrete block foundation and is topped with an asphalt roof. The wide front facade is dominated by a two story porch that has been enclosed on its second floor. The first floor has an enclosed balustrade and square posts. Center stairs lead to symmetrically placed doors and windows on the first floor. The third floor has two symmetrically placed windows. Fenestration on the south side facade is composed of symmetrically placed 2/2 sash. Asymmetrical fenestration on the north side facade includes 2/2 sash and a Queen Anne window on each floor.

The dwelling at 35 Topsfield is unusual in the district in that it is placed gable side to the street. Two and a half stories tall, this 4 x 4 bay rectangular building is clad in synthetic siding. The front south facade appears to have been formed by enclosing an original two story porch. Fenestration is symmetrical with two center windows on the second floor grouped closely together and flanked by one window on each side. The east and west facades have symmetrically placed windows on all three floors. The north rear facade has a one story addition running the entire length of the facade topped by a smaller centered addition on the second floor.

#### TYPE V: Miscellaneous single-family dwellings

(Continued)

United States Department of the Interior  
National Park ServiceNational Register of Historic Places  
Continuation SheetBrown Stocking Mill Historic District  
Ipswich (Essex County), MassachusettsSection number 7 Page 7

The **Mill Tenements** that do not fit into the Type I-IV categories have been placed in a miscellaneous category that includes the following buildings:

- 31 Brownville Avenue (ca. 1960; #14),
- 37 Brownville Avenue (Cape, ca. 1980; #12),
- 37 Topsfield Road (ca. 1907 with store addition ca. 1924; #38),
- 39 Topsfield Road (ca. 1920; #39), and
- 47 Topsfield Road (Queen Anne, ca. 1907, #43).

The Type V houses vary in design and/or construction date from the other tenements in the area. The **Houses at 31 and 37 Brownville Avenue** (ca. 1960, ca. 1980; #14 and 12) are the only non-contributing houses in the district. The **House at 39 Topsfield Road** (ca. 1920; #39) is a very small two story building set back from the road. It most likely served as a tenement for workers at the mill during its post-hosiery manufacturing use, and thus, is a contributing building.

The **Mill Tenement** at 37 Topsfield Road (ca. 1907; #38) is set on a corner lot and served as a tenement during the district's primary period of significance (1907-1914); later it was converted to a store. As a tenement, the building was unique given its square form and hipped roof. But like the majority of the tenements, it had symmetrically placed openings and exhibited little ornamentation. In 1924 a large one story addition was constructed for use as a store. Built on the southeast corner of the house, this addition is set very close to Topsfield Road and Brownville Avenue. It features large fixed pane windows and a double wooden main door entrance that intersects the southeast corner of the addition. Today the mixed commercial/residential use continues in this very well-preserved building, which retains its original wooden clapboards and 2/2 sash.

As an example of a late Queen Anne house, the **Mill Tenement** at 47 Topsfield Road (ca. 1907; #43; photograph #6) is the most high style in the district; it is also one of the best preserved houses. Like the other tenements, the house is symmetrically massed, but unlike the others, it exhibits a significant amount of ornamentation. The small two story building rises from a concrete block foundation and is topped with an asphalt shingled roof. Sheathed in its original decorative wooden shingles and wooden clapboards, the house also retains its original 2/2 windows. The front facade is gable front with a jerkin head roof trimmed with narrow bargeboard decorated with recessed panels. The house features a wrap-around one story porch with scroll-cut slat balusters, simple turned posts, and decorative brackets. Fenestration includes a second story window and an asymmetrically placed bay window on the first floor. The east facade contains windows grouped symmetrically and a centrally located shed wall dormer. The west side facade includes a jerkin head wall dormer over a first floor bay window. Stairs to the wrap around porch lead to the main entrance located on this side facade. The simple rear facade has a jerkin head roof and an enclosed rear porch with one window located symmetrically on each floor.

The Brown Stocking Mill Historic District is comprised of a mill complex and tenement houses that

(Continued)

United States Department of the Interior  
National Park Service

## National Register of Historic Places Continuation Sheet

Brown Stocking Mill Historic District  
Ipswich (Essex County), Massachusetts

Section number 7 Page 8

form a small, cohesive industrial community, and provide a well-preserved visual historical record.

### Archaeological Description

While no prehistoric sites are currently recorded in the district, it is likely that sites are present. Twenty-nine sites have been recorded in the general area (within one mile), including one site, 19-ES-104, which may extend into the southern portion of the district. Little interpretative information is available for that site except for its location on both sides of Kimball Brook where it crosses Topsfield Road at a gravel quarry. The physical characteristics of the district indicate locational criteria which are favorable for most prehistoric site locations. The southern portion of the district is in close proximity to Kimball Brook which flows to the Ipswich River. This characteristic combined with well drained level to moderately sloping terraced areas indicates a high sensitivity for prehistoric resources in that area. In general, however, given the above information, the size of the district (approximately 10 acres), the general lack of open space and dense residential/industrial related development, the potential for recovering significant prehistoric survivals in the district is low to moderate.

There is also a moderate potential for significant historic archaeological remains in the district. Most of the district area was reported as undeveloped land, probably woodlands located west of the town center at the time of its purchase by Harry B. Brown early in the 20th century. Cartographic sources indicate there were no existing buildings on the district land at that time. Since most of the mill complex and residential housing in the districts still extant, potential historic archaeological resources probably focus on outbuildings and occupational related features. Structural remains may survive from a small shipping room, the only portion of the mill complex which no longer survives. Structural remains may also survive from a garage (1907) originally located on the southeast corner of the mill lot and portions of the stable and open storage area, both of which are still extant on the northwest corner of the mill lot. Footings for the reservoir tank are also extant on the southwest corner of the lot. Structural remains of outbuildings (garages, sheds) related to residential structures may also survive although none have been identified to date. Controlled testing and excavation can also determine if occupational related features associated with both mill and residential housing survive in the district. Industrial waste may have been disposed of in areas surrounding the mill. Some limited domestic waste may have been discarded in areas surrounding residential homes. Archaeological survivals may also exist for subsistence based activities such as gardening or husbandry conducted by immigrants living in residencies homes in the area.

(end)

**8. Statement of Significance**

**Applicable National Register Criteria**

(Mark "x" in one or more boxes for the criteria qualifying the property for National Register listing.)

- A** Property is associated with events that have made a significant contribution to the broad patterns of our history.
- B** Property is associated with the lives of persons significant in our past.
- C** Property embodies the distinctive characteristics of a type, period, or method of construction or represents the work of a master, or possesses high artistic values, or represents a significant and distinguishable entity whose components lack individual distinction.
- D** Property has yielded, or is likely to yield, information important in prehistory or history.

**Criteria Considerations**

(Mark "x" in all the boxes that apply.)

Property is:

- A** owned by religious institution or used for religious purposes.
- B** removed from its original location.
- C** a birthplace or grave.
- D** a cemetery.
- E** a reconstructed building, object, or structure.
- F** a commemorative property.
- G** less than 50 years of age or achieved significance within the past 50 years.

**Narrative Statement of Significance**

(Explain the significance of the property on one or more continuation sheets.)

**9. Major Bibliographical References**

(Cite the books, articles, and other sources used in preparing this form on one or more continuation sheets.)

**Previous documentation on file (NPS):**

- preliminary determination of individual listing (36 CFR 67) has been requested
- previously listed in the National Register
- previously determined eligible by the National Register
- designated a National Historic Landmark
- recorded by Historic American Buildings Survey # \_\_\_\_\_
- recorded by Historic American Engineering Record # \_\_\_\_\_

**Areas of Significance**

(Enter categories from instructions)

INDUSTRY

ETHNIC HERITAGE/European

ARCHITECTURE

**Period of Significance**

1907 - 1946

**Significant Dates**

1907 - 1914

**Significant Person**

(Complete if Criterion B is marked above)

N/A

**Cultural Affiliation**

N/A

**Architect/Builder**

N/A

**Primary location of additional data:**

- State Historic Preservation Office
- Other State agency
- Federal agency
- Local government
- University
- Other

Name of repository:

Ipswich Public Library

Massachusetts Historical Commission

Brown Stocking Mill Historic District  
Name of Property

Essex County, MA  
County and State

## 10. Geographical Data

**Acreage of Property** See continuation sheet.

### UTM References See continuation sheet.

(Place additional UTM references on a continuation sheet)

1. Zone Easting Northing

3. Zone Easting Northing

2. Zone Easting Northing

4. Zone Easting Northing

x See continuation sheet

### Verbal Boundary Description

(Describe the boundaries of the property on a continuation sheet.)

### Boundary Justification

(Explain why the boundaries were selected on a continuation sheet.)

## 11. Form Prepared By

name/title Lisa Hartmann, Preservation consultant with Betsy Friedberg, National Register Director

organization Massachusetts Historical Commission date July, 1996

street & number 220 Morrissey Boulevard telephone 617-727-8470

city or town Boston state MA zip code 02125

## Additional Documentation

Submit the following items with the completed form:

### Continuation Sheets

### Maps

A **USGS map** (7.5 or 15 minute series) indicating the property's location.

A **sketch map** for historic districts and properties having large acreage or numerous resources.

### Photographs

Representative **black and white photographs** of the property.

**Additional items** (Check with the SHPO or FPO for any additional items)

## Property Owner

(Complete this item at the request of the SHPO or FPO.)

name (Multiple Owners)

street & number \_\_\_\_\_ telephone \_\_\_\_\_

city or town \_\_\_\_\_ state \_\_\_\_\_ zip code \_\_\_\_\_

**Paperwork Reduction Act Statement:** This information is being collected for applications to the National Register of Historic Places to nominate properties for listing or determine eligibility for listing, to list properties, and to amend existing listings. Response to this request is required to obtain a benefit in accordance with the National Historic Preservation Act, as amended (16 U.S.C. 470 et seq.).

**Estimated Burden Statement:** Public reporting burden for this form is estimated to average 18.1 hours per response including the time for reviewing instructions, gathering and maintaining data, and completing and reviewing the form. Direct comments regarding this burden estimate or any aspect of this form to the Chief, Administrative Services Division, National Park Service, P.O. Box 37127, Washington, DC 20013-7127; and the Office of Management and Budget, Paperwork Reductions Project (1024-0018), Washington, DC 20503.

United States Department of the Interior  
National Park ServiceNational Register of Historic Places  
Continuation SheetBrown Stocking Mill Historic District  
Ipswich (Essex County), MassachusettsSection number 8 Page 1**8. STATEMENT OF SIGNIFICANCE**

The Brown Stocking Mill Historic District exhibits integrity of location, design, workmanship, setting, feeling, and association. The district meets criteria A and C of the National Register at the local level. The period of significance extends from 1907 to 1946, with a primary focus on the years 1907 to 1914 (the years of hosiery manufacturing).

Ipswich is a distinct New England coastal town located in east central Essex County in an area characterized by gentle rolling terrain. As part of an early principal transportation corridor, the town grew rapidly in the early 17th century, becoming an important regional port. Ipswich's importance as a maritime center declined after the Colonial era as nearby towns with better harbor facilities became more popular ports. As a result, manufacturing and agriculture became the key industries in the town. The two remained critical to the local economy until after the mid-19th century when the mechanized advances of the Industrial Revolution were put to work, resulting in an increase in manufacturing activity and a decrease in agricultural production.

Hosiery became Ipswich's dominant industry during its peak as a manufacturing town around the turn of this century. Several hosiery firms were established in the town, including the Brown Stocking Mill, which was incorporated in December of 1907<sup>1</sup> by Harry B. Brown (1865-1935)<sup>2</sup>, a member of an influential early family in Ipswich.

Brown built a planned community that included a mill complex and workers housing for the immigrant workers. His plan was unique in Ipswich, because unlike the other sections of workers housing which evolved gradually over time, Brown developed a grand plan before any construction was started. However, his plans for expansion were cut short due to financial difficulties. By 1910, the Essex Hosiery Company was occupying the building, replacing the Brown Stocking Company. It appears that the Essex Hosiery Company was formed out of the Brown Stocking Company, probably in a last chance effort to save the floundering mill. This venture, too, was short-lived, closing ca. 1914.

Despite the brief life of the hosiery business in the district, the mill and housing constructed provide a visual narrative of stocking manufacturing, which was very important in the industrial history of Ipswich. The buildings form a district that is significant at the local level primarily as an illustration of the broad patterns of New England industrial progress, including specialization of products, technological advance, increasing capitalization, and employer/employee relations. It is also significant for its strong association with the Polish and Greek immigrant groups. The district is significant

---

<sup>1</sup>. Ipswich Chronicle, Aug 9, 19935

<sup>2</sup>. Ibid., December 13, 1907

(Continued)

United States Department of the Interior  
National Park Service

## National Register of Historic Places Continuation Sheet

Brown Stocking Mill Historic District  
Ipswich (Essex County), Massachusetts

Section number 8 Page 2

secondarily as a surviving complex of a mill building and workers housing.

The integrity of the buildings has been retained over time; changes are for the most part unobtrusive. These changes include three small mid-20th century additions to the mill, the enlargement of the office annex, and the removal of a small shipping room on the north side of the mill. (See sketch map showing the evolution of the mill.) Also, some window openings have been blocked, and some modern entrance and garage doors have been added to the building. Changes to the tenement dwellings include the addition of artificial siding, new window sashes, asphalt shingled roofs, and enclosed porches on many buildings. Despite these alterations, the mill and tenements retain their basic shape, form, and spatial relationships.

### Early Industrial Activity

The industrial history of Ipswich dates back to its beginnings as a town when small mills began operating shortly after settlement.<sup>3</sup> Between 1680 and 1750, several small mills and manufacturing companies, including grist mills, fulling mills, and brick-making companies, operated in and near the town center. Many of these companies first took advantage of the fast-moving water of the Ipswich River, and later improved the river's ability to generate power by constructing a dam. A small textile industry involving the making of lace, hosiery, and cloth developed during the early period of the Industrial Revolution. These early ventures, characterized by fits and starts, formed a basis for the large-scale production of hosiery, and illustrate the typical manufacturing evolution from a focus on serving local needs to the development of specialized products produced for larger markets.

The textile industry in Ipswich began with a cottage industry involving the making of pillow lace, an art that originated in England. Large quantities of the lace were handmade by men, women, and children in their homes and then distributed from some central source. Little investment was needed to begin this work, making it an attractive means of employment for many of the Ipswich natives who were struggling during the economic hard times following the Revolutionary War.

In 1822 Benjamin Fewkes and George Warner moved the first mechanized lace machine to Ipswich. Earlier these two men had smuggled the machine, which was actually a stocking loom with improvements for making lace, from England. It was George and Augustine Heard, along with Joseph Farley, who convinced Fewkes and Warner to come to Ipswich. The Heards in particular were interested in developing the lace industry in Ipswich, using the money that Augustine made in the China trade as capital. The lace machines were the basis for a company incorporated as the Boston & Ipswich Lace Company in 1824, and located in the center of town on South Main Street. The venture was short-lived, however, and by 1828 operations had mostly ceased.

Fewkes and Warner, along with two brothers named James and Sanford Peatfield, were the first of

---

<sup>3</sup>. All of the early industrial activity took place outside of the Brown Stocking Mill Historic District.

(Continued)

United States Department of the Interior  
National Park ServiceNational Register of Historic Places  
Continuation SheetBrown Stocking Mill Historic District  
Ipswich (Essex County), MassachusettsSection number 8 Page 3

many trained stocking makers that immigrated to Ipswich from the Nottingham area in England. Back in England many of them had begun work on improving stocking frames, as well as converting some of the machines to lace-making machines. In an attempt to escape the deplorable conditions of the industry in England, they brought these ideas with them to New England.

Shortly after the Boston & Ipswich Lace Company began operations, Dr. Thomas Manning, the Heard brothers, and others started a lace-making venture in 1827 called the New England Lace Company. Skilled male immigrants from England were hired to operate the lace machines. Women and girls (most of them related to the men) were hired to embroider and wash the lace.<sup>4</sup> In 1833 a British export tax placed on the thread used in the lace production forced small lace producers in Ipswich to cease operation.

Gradually, many of the former lace producers entered the hosiery industry, joining men like Benjamin Fewkes and George Warner who were involved in a new small-scale hosiery industry. Fewkes and Warner were working with stocking frames designed and constructed by the two Peatfield brothers. Hosiery proved to be a profitable business, and soon other investors followed.

A larger hosiery factory at the Lower Falls was constructed by George Heard in 1834. Heard also helped the Peatfield brothers establish an underwear manufactory in Depot Square that proved to be very successful. Another hosiery concern was established in 1863 on the Ipswich River at County Street. Called the Ipswich Woolen Mills, business prospered until an inventory fire in 1873 caused a setback. The mill never fully recovered and closed operations in 1885.

In addition to lace and hosiery manufacturing, there was an early cloth-making industry in Ipswich, started by many of the same people involved in lace-making. It did reach a point of some regional importance in terms of production, but was soon overshadowed by the large-scale textile producers in Lowell and Lawrence. As a very early user of mechanized power, however, cloth production in Ipswich was part of the evolution towards an increasingly complex technology which contributed to the eventual success of the hosiery industry. Dr. John Manning (his son Dr. Thomas Manning was later involved in lace-making as already described in this section) was a citizen of Ipswich who had progressive ideas that he applied in medicine and business alike. In 1792, he had constructed the Manning Woolen Mill on the riverbank in the town center on the site of the Caldwell Block. Although his wind-powered venture was short-lived (closing in 1800), it was the first power driven woolen mill in Massachusetts.

The year 1828 marked a turning point in Ipswich's industrial development when Joseph Farley and the two Heard brothers began operation of a cotton mill that was to become a successful long-term operation. Water power had long run fulling and grist mills in Ipswich, but it was not until these three

---

<sup>4</sup>. Fewkes: 19

(Continued)

United States Department of the Interior  
National Park ServiceNational Register of Historic Places  
Continuation SheetBrown Stocking Mill Historic District  
Ipswich (Essex County), MassachusettsSection number 8 Page 4

men began operation, that water power was used for cloth production. Within the boundary of the Ipswich Mills Historic District, a stone mill and a dam were built and operated as the Ipswich Manufacturing Company, which resulted in an operation that produced 450,000 yards of cloth on 260 looms annually. Mainly Yankee workers were employed at the mill, with women outnumbering men three to one.<sup>5</sup> Expansion of the business continued for six years as Farley purchased additional land for his operation. However, by 1836 the firm ran into financial difficulties, and in 1846 the Dane Manufacturing Co. bought the business.

It was on this site that Ipswich Mills started manufacturing hosiery in 1868 under the direction of Amos Lawrence, beginning what was to become Ipswich's dominant industry during its peak as a manufacturing town.<sup>6</sup>

Hosiery Manufacturing in the Brown Stocking Mill Historic District, 1907-1914

The Brown Stocking Mill was established at a period of time when large-scale manufacturing of hosiery was in full swing in Ipswich at Ipswich Mills. At first a supervisor and later an agent for Ipswich Mills, Harry B. Brown had more than a decade of experience with the firm, and was well aware of the manufacturing methods that made the firm so successful.<sup>7</sup> Around 1906 he made the decision to put his knowledge to work on his own hosiery firm. Brown was a resident of Ipswich whose extended family had longed played a part in the community.

Setting high goals for himself, Brown commenced building a planned community that included a mill and a large number of tenement houses for his immigrant workers, patterned after those built by Ipswich Mills. Brown's original plan for the community was unique in Ipswich. Unlike other areas of worker housing which evolved gradually over time, Brown developed a grand plan before any construction was even started. Even though Brown was able to carry out only a portion of his plan, his plan made a long-term impact on the development in the area because his original street and plot plan were followed by later developers.

The land Brown chose for his community was an undeveloped area (most likely wooded) of approximately 20 acres located just west of the town's edge. At least part of this land was bought from the Farley family, one of Ipswich's early industrial families, and one of many Ipswich families that purchased land on the outskirts of the town with the knowledge that as the town expanded, the value of the land would go up. The Farleys and others were well aware of the fact that with the advent of steam power, manufacturers were no longer tied to the river for power. Thus, land like

---

<sup>5</sup>. Waters, Ipswich Mills". 30

<sup>6</sup>. See the Ipswich Mills Historic District National Register Nomination for more information.

<sup>7</sup>. City Directories, various years.

(Continued)

United States Department of the Interior  
National Park Service

## National Register of Historic Places Continuation Sheet

Brown Stocking Mill Historic District  
Ipswich (Essex County), Massachusetts

Section number 8 Page 5

Brown's could be developed for not only residential, but also industrial use.

Brown's land was bordered on its southern end by Topsfield Road, a main road leading west of the town center that provided easy access to the main commercial area. The plot was largely undeveloped with only a few streets laid out, and in 1906 Brown commissioned a plan drawn by John Nourse which shows 178 plots laid out on a network of streets.<sup>8</sup> (See Plan of House Lots in Ipswich.)

By 1907 Brown had constructed a mill and 30 dwellings for workers.<sup>9</sup> As part of his grand scheme for a planned community, Brown donated a plot of land for the Burley School (located just outside of the district on 25 Mount Pleasant Avenue), which would service his workers' children and the surrounding community.<sup>10</sup>

Late in 1907, Brown incorporated his business under the name of Brown Stocking Company with a capital investment of \$500,000. The business was ready to begin manufacturing stockings as soon as the equipment arrived. William Cunningham was hired as engineer, and Roland Tilton, who worked under Brown at the Ipswich Mills, was to act as bookkeeper.<sup>11</sup> Brown himself served as the Treasurer and agent for the firm, putting to work his many years of experience at Ipswich Mills.<sup>12</sup>

Early in 1908 actual production of the stockings began at the steam-powered Brown Stocking Mill. Hosiery of mercerized cotton, lisle and possibly silk was manufactured in the mill.<sup>13</sup> Dyeing, knitting, and finishing were completed in the main mill building, and paper boxes for shipping were made in an annex. (See sketch map.)

By 1907 the Brown Stocking Mill community included the mill at the top of a short hill on Brownville Avenue, and several tenements along Brownville Avenue and Topsfield Road. Before 1910 the workers housing community was enlarged to include the dwellings at the northern portion of the district on Brownville Avenue, Broadway Avenue, Burleigh Avenue, and Burleigh Place. (See Assessor's map 41B.) These tenements represented approximately half of the total number of

---

<sup>8</sup>. See Section 7 of this form for a detailed description of the street development.

<sup>9</sup>. Deed Book 1882: 391

<sup>10</sup>. Ipswich Town Reports, 1907: 99

<sup>11</sup>. Ipswich Chronicle, December 13, 1907

<sup>12</sup>. City Directory, 1908

<sup>13</sup>. Ipswich Chronicle, December 13, 1907

(Continued)

United States Department of the Interior  
National Park Service

## National Register of Historic Places Continuation Sheet

Brown Stocking Mill Historic District  
Ipswich (Essex County), Massachusetts

Section number 8 Page 6

---

dwellings that were part of Brown's original grand plan—one that was never to be realized.

A January 10, 1910, article in the "Ipswich Chronicle" reported on the second annual meeting of the Brown Stocking Company, and hinted that the mill was experiencing economic trouble: "like all new enterprises, it has had its ups and downs." Shortly thereafter, the mill was incorporated as the Essex Hosiery Company. Harry Brown continued his affiliation with the mill by acting as its agent and manager until at least 1912. The mill probably continued in business after Brown left, but by 1914 it had ceased operating.<sup>14</sup>

In hopes of recouping part of their loss, the owners of the Essex Hosiery Company started a large advertising campaign in 1917 to sell the mill and the associated workers housing. The campaign included the production of a brochure depicting panoramic shots of the front and rear facades of the mill and workers houses.<sup>15</sup> The owners hoped to sell the property to a firm with a government contract for war goods.<sup>16</sup>

### Immigrant Workers

Harry Brown built his tenements for the immigrant workers who provided the unskilled labor at his hosiery mill. Most of his tenants were Polish and Greek, but a few French Canadians may have also lived in the tenements and worked in the mill. Brown's work force reflected the immigrant population of Ipswich at the turn of the century, which was predominantly Polish and Greek, with some French Canadians.

The immigrant population in Ipswich had changed dramatically over time, both in terms of the numbers and countries of origin. The earliest mills in the town employed mainly Yankee natives, but as the industries grew, they began to hire immigrants who were willing to work at unskilled jobs for lower wages. First came the Irish in the 1840s and 1850s, followed by Canadians from the British Provinces and Quebec. By the 1870s, a French Canadian population was well established in the town.

In 1875 there were 454 foreign-born people in town, representing 12.4% of the population. But by 1915, this number increased to 2,479 foreign-born residents, or 39.5% of Ipswich's total population. Poles and Greeks represented over half of the foreign-born population in 1915.<sup>17</sup>

---

<sup>14</sup>. City Directory, various years.

<sup>15</sup>. This 1917 brochure and its associated may can be found at the Ipswich Public Library.

<sup>16</sup>. Ipswich Chronicle, June 8, 1917.

<sup>17</sup>. Ibid.

(Continued)

United States Department of the Interior  
National Park Service

## National Register of Historic Places Continuation Sheet

**Brown Stocking Mill Historic District  
Ipswich (Essex County), Massachusetts**

Section number 8 Page 7

For the most part, the immigrants settled in a large section west of downtown that is roughly bordered by Linebrook Road (north), the railroad (east), Ipswich River (south), and Brownville Avenue (west).<sup>18</sup> The two most cohesive immigrant neighborhoods that developed within this area are the Brown Stocking Mill Historic District and the Ipswich Mills Historic District.<sup>19</sup>

Tenements like the ones Harry Brown built provided ready housing for the newly arrived immigrants who could rent a room from a fellow countryman or woman. Typically, one family would rent a house and then provide room and board for sub-letters.

The immigrant population moving to Ipswich in search of employment was in many ways isolated from the rest of the town's population. Language, cultural, and economic difficulties between the new and established residents were manifested in the physical separation that evolved as workers housing was built on undeveloped land. Although living and working in close proximity, the two main groups of immigrants (the Polish and Greeks) were separated by language and culture barriers during part of the beginning of the 20th-century. Each group attended its own church and social functions. The Greeks built their church in 1907 and the Polish in 1908. Both are located just outside of the Brown Stocking Mill Historic District.

### District in later years, 1917—Present

The advertising campaign waged by the Essex Hosiery Company in 1917 to sell the mill and tenements was an unsuccessful venture. The mill was left vacant for several years until Gross, Martineau & Burke bought it for shoe stock manufacturing ca. 1921. The company, later called F. L. Burke & Son, employed between 200 and 500 people manufacturing heels by 1930,<sup>20</sup> and continued sporadic production at the mill until the mid-1950s.<sup>21</sup>

During the time of leather manufacturing at the mill, the district retained its immigrant make-up. The city directory listings of names confirms current resident's memories of Polish, Greek, and a few French Canadian residents living in the district. Some of these tenants worked in the mill, which employed mainly female workers. One long-time resident of the neighborhood remembers spending much of her free time as a child playing in the factory with leather remnants while her mother worked

<sup>18</sup>. See MHC Ipswich Mills Survey Area.

<sup>19</sup>. See the Ipswich Mills Historic District National Register Nomination.

<sup>20</sup>. Stone: 414.

<sup>21</sup>. City Directory, various dates.

(Continued)

United States Department of the Interior  
National Park Service

## National Register of Historic Places Continuation Sheet

Brown Stocking Mill Historic District  
Ipswich (Essex County), Massachusetts

Section number 8 Page 8

making heels.<sup>22</sup>

Most residents remained tenants in the district until after the 1930s economic depression. By 1940, this changed, and the majority of the residents were owners of their own homes.<sup>23</sup> For these immigrants and children of immigrants, home ownership marked a major economic milestone.

In the years following the closing of the Essex Hosiery Mill, the neighborhood underwent some physical changes. Stores, which were not present during the primary period of significance (1907-1914), began opening in the district. Beginning around 1916 a store operated at the **Shed** at the rear of 25 Brownville Avenue (ca. 1916; #16a), continuing in business until ca. 1960. Today the building is used as a shed, but retains much of its original appearance. Another store opened ca. 1924 when an addition was added to the **Mill Tenement** at 37 Topsfield Road (ca. 1907; #38). It, too, is well preserved and still operates as a neighborhood convenience store. The third store in the district operated from ca. 1929 to ca. 1965 in an addition built on the **Mill Tenement** at 6-8 Brownville Avenue (ca. 1907; #34).

At the same time these commercial operations were taking place, the neighborhood was undergoing gradual modernization. Sidewalks were constructed by workers in the Works Progress Administration (WPA) in the 1930s. Also, the reservoir tank, which had provided water for the district since ca. 1907, was replaced with the town water system.<sup>24</sup>

In the mid-1950s the McMillan Lab Inc. purchased the mill building and began manufacturing Foam Rubber products.<sup>25</sup> Currently, Beswick Engineering is the owner of the building. Tenants include ATL Inc., Pierce Furniture Factory, Pen-Bur Corp., Ipswich Bay Tree Service, and PRB Woodworking.

The district retains its original industrial and residential mixed-use from its primary period of significance. Other current uses include commercial use in the store at 37 Topsfield Road and professional office use in part of the mill. The residences today include mainly owner-occupied, single-family dwellings with a few duplexes.

Some of the residents of the district are descended from original Greek and Polish immigrants who

---

<sup>22</sup>. Interview with Virginia Reilly of 11 Brownville Ave., October 24, 1994.

<sup>23</sup>. City Directory, various dates.

<sup>24</sup>. Interview with Virginia Reilly of 11 Brownville Ave., October 24, 1994.

<sup>25</sup>. City Directory, 1954, 56 and 1961 Sanborn Map.

(Continued)

United States Department of the Interior  
National Park Service

## National Register of Historic Places Continuation Sheet

Brown Stocking Mill Historic District  
Ipswich (Essex County), Massachusetts

Section number 8 Page 9

---

lived in the mill tenements, providing a link with the ethnic history of the neighborhood.

### Archaeological Significance

While several prehistoric sites have been recorded in Ipswich, the generally low level of documentation for these sites enables only a general interpretation of the patterns of prehistoric occupation for the town. Any surviving sites in Ipswich with the potential for systematic study could be significant. Prehistoric sites in this area may offer the potential for an analysis of coastal settlement and subsistence during later Woodland Periods and a comparison of inland versus coastal sites as a result of sea level rise. Sea level was considerably lower during the Paleo Indian and Archaic Periods resulting in Ipswich area sites occupying inland locations during those times. As a result, prehistoric sites can offer the potential for an analysis of changing settlement and subsistence through time in the town of Ipswich and, at a larger scale along the present day coastal zone including Plum Island Sound and the Merrimack River Estuary.

Historic archaeological resources described above have the potential to more fully document the layout of the mill which formed the core of the district and its relationship to immigrant families who worked in the mill and lived in local mill owned housing. Most of the mill structures are still extant, however, survivals of the mill garage and stable could provide information on transportation technologies available at the mill and by whom these services were used. Any trash areas at the mill might also provide details relating to textile technologies present at the mill and the types of products which were manufactured. Survivals from the reservoir tank on the mill lot could provide information relating to water supply systems prior to the advent of town supplied water. Few archaeological resources have been identified with residential homes in the district, however, some level of domestic trash disposal and activities aimed at supplementing subsistence may be present. This information can help better understand how immigrants, particularly Polish, Greek and some French Canadians adapted to their new lives in the area and careers at the Brown Stocking Mill and its successors. Information may also be present which helps better understand the relationship between the mill and its tenant workers and borders who lived in tenant housing.

(end)

United States Department of the Interior  
National Park Service

## National Register of Historic Places Continuation Sheet

Brown Stocking Mill Historic District  
Ipswich (Essex County), Massachusetts

Section number 9 Page 1

### 9. MAJOR BIBLIOGRAPHICAL REFERENCES

Candee, Richard. *Frame Knitters of New England*. Unpublished, 1994.

\_\_\_\_\_. *The Nottingham Trade in America*. Unpublished, 1995.

City Directories. 1885-1958.

Fewkes, Jesse. "Fine Thread, Lace and Hosiery." Publication by the Ipswich Historical Society 13 (1904):1-23.

Ipswich Chronicle. December 13, 1907. January 21, 1910. June 8, 1917. August 9, 1935.

Ipswich Town Reports. 1907.

Massachusetts Historical Commission Survey Forms for the Ipswich Mill Survey Area, conducted June 1990 by Christine S. Beard Associates.

Massachusetts Historical Commission Reconnaissance Survey Report of the Community of Ipswich, January 1985.

National Park Service. Ipswich Mills Historic District Nomination. September 1994.

1917 Advertising Brochure for sale of Essex Hosiery Mill. Photocopy at Ipswich Public Library.

Stone, Orra L. *History of Massachusetts Industries: Their Inception, Growth and Success*. Boston, Chicago: S. J. Clarke Publishing Co., 1930.

Waters, Thomas Franklin, "Ipswich in the World War." Publication of the Ipswich Historical Society 23 (1920).

\_\_\_\_\_. "Ipswich Mills and Factories." Publication of the Ipswich Historical Society 13 (1904):24-33.

#### Maps/Atlases

Nourse, John W. Plan of House Lots in Ipswich made for Harry B. Brown. June, 1906. Essex County Court House. Book of Plans No. 18, Plan No. 30.

Nourse, John W. Plan of Land in Ipswich Conveyed by the Danvers Savings Bank to Michael L. Ryan. April 1, 1914. Essex County Court House. Book 2255, Page 81.

(Continued)

United States Department of the Interior  
National Park Service

# National Register of Historic Places Continuation Sheet

Brown Stocking Mill Historic District  
Ipswich (Essex County), Massachusetts

Section number 9 & 10 Page 2 & 1

---

Sanborn Fire Insurance Maps. 1886. 1897. 1902. 1907. 1916. 1929. 1944. 1961.

Walker & Co., George H. Atlas of Essex County. 1884. 1910.

Whitlock. Atlas of Essex County, Massachusetts. 1872.

### Interviews

Reilly, Virginia of 11 Brownville Avenue. Interview by author. October 24, 1994.

## **10. Geographical Data**

### Acreage of Property

The property is approximately 10 acres.

### UTM Reference

1. 19/348450/4726540
2. 19/348680/4726680
3. 19/348760/4726640
4. 19/348820/4726190
5. 19/348680/4726150

### Verbal Boundary Description

The boundaries of the Brown Stocking Mill Historic District are delineated on the accompanying maps with a distinct black line. The map consists of sections of two pages (41B and 41D) from the Town of Ipswich's Assessors' Records.

### Boundary Justification

The boundary of the Brown Stocking Mill Historic District includes the mill structure (with the exception of a small shipping room removed in ca. 1965), remnants of most of the outbuildings/structures, and mill tenements that were constructed as part of the Brown Stocking Mill by Harry B. Brown. The district is surrounded by mainly residential neighborhoods that post date the mill development

(end)

**Brown Stocking Mill Historic District  
Ipswich (Essex County), Massachusetts**

Ass. Map#/Parcel#	MHC#	NR#	Street Address	Historic Name	Date	Style	Status
41-B/104	N/A	8	24 Broadway Ave.	Mill Tenement House/Type II	ca. 1908	No Style	C/B
41-B/105	N/A	7	26 Broadway Ave.	Mill Tenement House/Type II	ca. 1908	No Style	C/B
41-B/106	N/A	6	28 Broadway Ave.	Mill Tenement House/Type II	ca. 1908	No Style	C/B
41-B/107	N/A	5	30 Broadway Ave.	Mill Tenement House/Type II	ca. 1908	No Style	C/B
41-B/108	N/A	4	32 Broadway Ave.	Mill Tenement House/Type II	ca. 1908	No Style	C/B
41-D/133	IPS.384	36	3 Brownville Ave.	Mill Tenement House/Type I	ca. 1907	No Style	C/B
41-D/123	IPS.385	35	4 Brownville Ave.	Mill Tenement House/Type III	ca. 1907	No Style	C/B
		35a		Shed	Mid 20th C.	No Style	NC/B
41-D/124	IPS.386	34	6-8 Brownville Ave.	Mill Tenement House/Type III	ca. 1907/ store addition ca. 1929	No Style	C/B
		34a		Garage	Mid 20th C.	No Style	NC/B
41-D/132	IPS.387	33	7 Brownville Ave.	Mill Tenement House/Type I	ca. 1907	No Style	C/B
41-D/131	IPS.389	32	9 Brownville Ave.	Mill Tenement House/Type II	ca. 1907	No Style	C/B
41-D/125	IPS.390	31	10 Brownville Ave.	Mill Tenement House/Type III	ca. 1907	No Style	C/B
41-D/130	IPS.391	30	11 Brownville Ave.	Mill Tenement House/Type II	ca. 1907	No Style	C/B
41-D/127	IPS.392	29	12 Brownville Ave.	Mill Tenement House/Type II	ca. 1907	No Style	C/B
		29a		Garage/Shop	ca. 1965	No Style	NC/B
41-B/170	IPS.393	28	13 Brownville Ave.	Mill Tenement House/Type III	ca. 1907	No Style	C/B
41-D/127	IPS.394	27	14 Brownville Ave.	Mill Tenement House/Type II	ca. 1907	No Style	C/B
		27a		Garage	Mid 20th C.	No Style	NC/B
41-B/170	IPS.395	26	15 Brownville Ave.	Mill Tenement House/Type III	ca. 1907	No Style	C/B
41-D/128	IPS.396	25	16 Brownville Ave.	Mill Tenement House/Type II	ca. 1907	No Style	C/B
		25a		Shed	Mid 20th C.	No Style	NC/B
		25b		Garage	Mid 20th C.	No Style	NC/B
41-B/168	IPS.397	24	17 Brownville Ave.	Mill Tenement House/Type II	ca. 1907	No Style	C/B
		24a		Garage	Mid 20th C.	No Style	NC/B
41-D/129	IPS.398	23	18 Brownville Ave.	Mill Tenement House/Type II	ca. 1907	No Style	C/B
		23a		Garage	Mid 20th C.	No Style	NC/B
41-B/16	IPS.399	22	19 Brownville Ave.	Mill Tenement House/Type III	ca. 1907	No Style	C/B

**Brown Stocking Mill Historic District  
Ipswich (Essex County), Massachusetts**

41-B/31	IPS.400	21 21a	20 Brownville Ave.	Mill Tenement House/Type II Garage	ca. 1907 Mid 20th C.	No Style No Style	C/B NC/B
41-B/166	IPS.401	20	21 Brownville Ave.	Mill Tenement House/Type III	ca. 1907	No Style	C/B
41-B/32	IPS.402	19 19a	22 Brownville Ave.	Mill Tenement House/Type II Garage	ca. 1907 Early 20th C.	No Style No Style	C/B NC/B
41-B/165	IPS.403	18	23 Brownville Ave.	Mill Tenement House/Type III	ca. 1907	No Style	C/B
41-B/33	IPS.404	17	24 Brownville Ave.	Mill Tenement House/Type II	ca. 1907	No Style	C/B
41-B/164	IPS.405	16 16a	25 Brownville Ave.	Mill Tenement House/Type III Shed (former store)	ca. 1907 ca. 1916	No Style No Style	C/B C/B
41-B/34	N/A	15	26 Brownville Ave.	Mill Tenement House/Type II	ca. 1907	No Style	C/B
41-B/35	N/A	1	28 Brownville Ave.	Brown Stocking Mill	ca. 1907	Early 20th C. Industrial	C/B
		1a		Stable	ca. 1907	No Style	NC/B
		1b		Shed	ca. 1907	No Style	NC/B
		1c		Metal shed	ca. 1965	No Style	NC/B
		1d		Metal shed	ca. 1965	No Style	NC/B
		1e		Metal shed	ca. 1965	No style	NC/B
41-B/112	N/A	N/A	27/29 Brownville Ave.	Vacant Lot	N/A	N/A	NC/Si
41-B/111	N/A	14	31 Brownville Ave.	Mill Tenement House/Type V	ca. 1960	No Style	NC/B
41-B/110A	N/A	13	33/35 Brownville Ave.	Mill Tenement House/Type IV	ca. 1908	No Style	C/B
41-B/110B	N/A	12	37 Brownville Ave.	Mill Tenement House/Type V	ca. 1980	Cape	NC/B
41-B/110	N/A	2	39 Brownville Ave.	Mill Tenement House/Type II	ca. 1908	No Style	C/B
41-B/109	N/A	3	41 Brownville Ave.	Mill Tenement House/Type II	ca. 1908	No Style	C/B
41-B/120	IPS.408	9 9a	10 Burleigh Ave.	Mill Tenement House/Type II Garage	ca. 1908 Mid 20th C.	No Style No Style	C/B NC/B
41-B/119	IPS.406	10 10a	3 Burleigh Place	Mill Tenement House/Type II Garage	ca. 1908 Mid 20th C.	No Style No Style	C/B NC/B
41-B/118	IPS.407	11	5 Burleigh Place	Mill Tenement House/Type II	ca. 1908	No Style	C/B
41-D/134	N/A	37	35 Topsfield Rd.	Mill Tenement House/Type IV	ca. 1907	No Style	C/B

**Brown Stocking Mill Historic District  
Ipswich (Essex County), Massachusetts**

41-D/122	N/A	38	37 Topsfield Rd.	Mill Tenement House/Type V	ca. 1907/store addition ca. 1924	No Style	C/B
		38a		Garage	Mid 20th C.	No Style	NC/B
41-D/121A	N/A	39	39 Topsfield Rd.	House/Type V	ca. 1920	No Style	C/B
		39a		Garage	Mid 20th C.	No Style	NC/B
41-D/121	N/A	40	41 Topsfield Rd.	Mill Tenement House/Type III	ca. 1907	No Style	C/B
41-D/120	N/A	41	43 Topsfield Rd.	Mill Tenement House/Type III	ca. 1907	No Style	C/B
41-D/113	N/A	42	45 Topsfield Rd.	Mill Tenement House/Type III	ca. 1907	No Style	C/B
		42a		Garage	1946	No Style	NC/B
41-D/112	N/A	43	47 Topsfield Rd.	Mill Tenement House/Type V	ca. 1907	Queen Anne	C/B
<b>TOTALS</b>	<b>Contributing</b>		<b>Non-contributing</b>				
Buildings	42		22 (mainly garages)				
Sites	0		1				
Structures	0		0				
Objects	0		0				
	42		23				

UNITED STATES DEPARTMENT OF THE INTERIOR  
NATIONAL PARK SERVICE

NATIONAL REGISTER OF HISTORIC PLACES  
EVALUATION/RETURN SHEET

REQUESTED ACTION: NOMINATION

PROPERTY NAME: Brown Stocking Mill Historic District

MULTIPLE  
NAME:

STATE & COUNTY: MASSACHUSETTS, Essex

DATE RECEIVED: 7/25/96                      DATE OF PENDING LIST: 8/06/96  
DATE OF 16TH DAY: 8/22/96                      DATE OF 45TH DAY: 9/08/96  
DATE OF WEEKLY LIST:

REFERENCE NUMBER: 96000924

NOMINATOR: STATE

REASONS FOR REVIEW:

APPEAL: N    DATA PROBLEM: N    LANDSCAPE: N    LESS THAN 50 YEARS: N  
OTHER: N    PDIL: N    PERIOD: N    PROGRAM UNAPPROVED: N  
REQUEST: N    SAMPLE: N    SLR DRAFT: N    NATIONAL: N

COMMENT WAIVER: N

ACCEPT     RETURN     REJECT    9.22.96 DATE

ABSTRACT/SUMMARY COMMENTS:

RECOM./CRITERIA \_\_\_\_\_

REVIEWER \_\_\_\_\_ DISCIPLINE \_\_\_\_\_

TELEPHONE \_\_\_\_\_ DATE \_\_\_\_\_

DOCUMENTATION see attached comments Y/N see attached SLR Y/N



beswick engineering

★ PIERCE FURNITURE FAC

18 C  
19-20

Brown Stocking Mill, 26 Brownville Ave., Ipswich

Brown Stocking Mill Historic District

Essex County, MA

Photographer: Lisa Hartmann

October 1994

Negatives at Ipswich Historical Commission

Front facade of mill, facing west

Photograph #1 of 6



Mill Tenements on Brownville Avenue, Left to right: 25, 23, 21, 19, 17

~~15, 13~~ Brownville Ave

Brown Stocking Mill Historic District

Essex County, MA

Photographer: Lisa Harbmann

October 1994

Negatives at Ipswich Historical Commission

View looking south down Brownville Avenue

Photograph # 2 of 6



Mill Tenement, 3 Brownville Ave, Ipswich

Brown Stocking Mill Historic District

Essex County, MA

Photographer: ~~Lisa~~ Hartmann, October 1994

Negatives at Ipswich Historical Commission

View of front and side facade looking northeast

Photograph #3016



Mill Tenement, 26 Brownville Ave, Ipswich

Brown Stacking Mill Historic District

Essex County, MA

Photographer: Lisa Hartmann

October 1994

Negatives at Ipswich Historical Commission

View of front and side facade looking northwest

Photograph #4 of 6



Mill tenement, 4 Brownville Ave, Ipswich  
Brown Stocking Mill Historic District  
Essex Cty, MA

Photographer: Lisa Hartmann

October 1994

Negatives at Ipswich Historical Commission

View of front and side facade looking northwest.

Photograph # 5.016



Mill Tenements, 47 (left) and 45 (right) Topsfield Road, Ipswich  
Brown Stocking Mill Historic District  
Essex County, MA

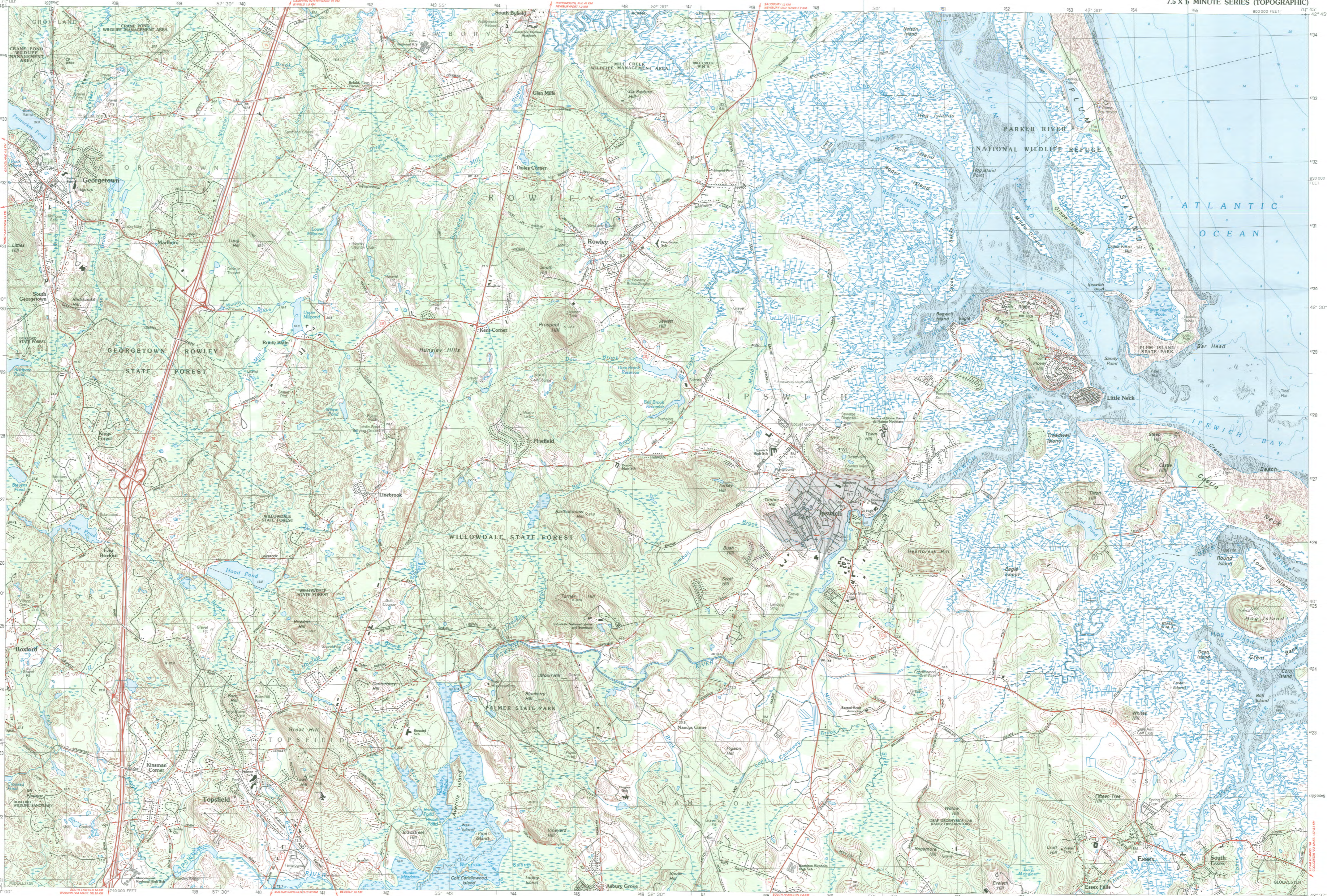
Photographer: Lisa Hartmann

October 1994

Negatives at Ipswich Historical District

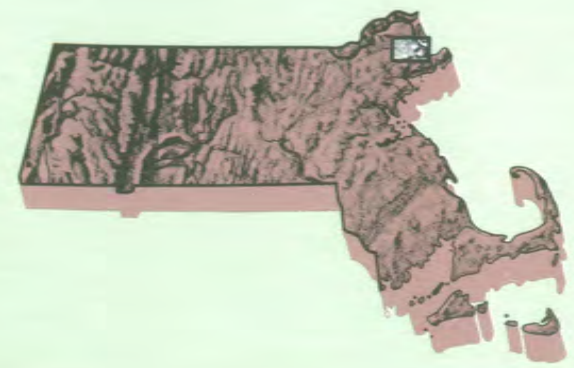
View of front and side facades looking northwest

Photograph #6 of 6



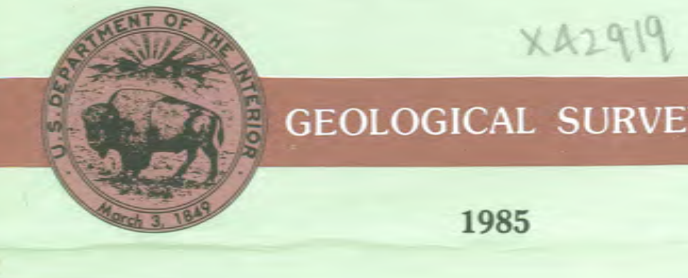
# Ipswich MASSACHUSETTS

1:25 000-scale metric topographic map



7.5 X 15 MINUTE QUADRANGLE SHOWING

- Contours and elevations in meters
- Highways, roads and other manmade structures
- Water features
- Woodland areas
- Geographic names



Published by the United States Geological Survey in cooperation with Massachusetts Department of Public Works

Control by USGS, NOS/NOAA, USCE, and Commonwealth of Massachusetts agencies

Compiled by photogrammetric methods from aerial photographs taken 1978. Field checked 1979. Map edited 1985. Supersedes Georgetown and Ipswich 1:25,000-scale maps dated 1966 and 1978 (1978). This information is not intended for navigational purposes.

Projection and 1000-meter grid: Universal Transverse Mercator, zone 19

1000-foot grid ticks based on Massachusetts coordinate system, unadjusted zone 1927 North American Datum

To place on the predicted North American Datum 1983 move the projection lines 6 meters south and 42 meters west as shown by dashed corner ticks

There may be private inholdings within the boundaries of the National or State reservations shown on this map

CONTOUR INTERVAL 3 METERS

NATIONAL GEODETIC VERTICAL DATUM OF 1929 CONTROL ELEVATIONS SHOWN TO THE NEAREST 0.1 METER OTHER ELEVATIONS SHOWN TO THE NEAREST 0.5 METER

DEPTH CURVES AND SOUNDINGS IN METERS DATUM IS MEAN LOW WATER

THE RELATIONSHIP BETWEEN THE TWO DATUMS IS VARIABLE

SHOULDER SHOWN REPRESENTS THE APPROXIMATE LINE OF MEAN HIGH WATER

THE MEAN RANGE OF TIDE IS APPROXIMATELY 2.6 METERS

THIS MAP COMPLIES WITH NATIONAL MAP ACCURACY STANDARDS

Meters	Feet
1	3.2808
2	6.5617
3	9.8425
4	13.1234
5	16.4042
6	19.6850
7	22.9659
8	26.2467
9	29.5276
10	32.8084

FOR SALE BY U.S. GEOLOGICAL SURVEY DENVER, COLORADO 80225, OR RESTON, VIRGINIA 22092

## Topographic Map Symbols

- Primary highway, hard surface
- Secondary highway, hard surface
- Light-duty road, hard or improved surface
- Unimproved road, trail
- Route marker: Interstate, U.S., State
- Railroad: standard gauge, narrow gauge
- Bridge: drawbridge
- Footbridge: overpass, underpass
- Built-up area: only selected landmark buildings shown
- House: barn; church; school; large structure
- Boundary: National, with monument; State; County, parish; Civil township, precinct, district; National or State reservation; small park; Land grant with monument; Sound section corner; U.S. public lands survey; range, township, section; Range, township, section line: location approximate
- Fence or field line
- Power transmission line, isolated tower
- Dam: dam with lock
- Cemetery: grave
- Campground; picnic area; U.S. location monument
- Well: water well; spring
- Mine shaft: prospect; adit or ore
- Control: horizontal station; vertical station; spot elevation
- Contours: index; intermediate; supplementary; depression
- Disturbed surface: strip mine, lava, sand
- Bathymetric contours: index; intermediate
- Parental lake and stream; intermittent lake and stream
- Rapids, large and small; falls, large and small
- Salinized marsh; marsh; swamp
- Land subject to controlled inundation: woodland
- Scrub; mangrove
- Orchard; vineyard

A pamphlet describing topographic maps is available on request

Brown Stacking Mill  
Historic District  
Ipswich, Essex Co., MA  
UTM Reference:  
1. 19348450/4726540  
2. 19348680/4726600  
3. 19348760/4726640  
4. 19348820/4726190  
5. 19348680/4726150



Braam Stacking Mill  
Historic District  
Assessor Map 41D

KEY:

- Boundary
- National Register Number
- Photo Number

Ipswich (Essex County), Massachusetts  
1/2

For Assessment Purposes Only  
Not For Property Conveyances

SCALE 1"=100'  
ZONING AS SHOWN

REVISED TO JAN. 1, 1980  
John E. O'Donnell & Associates  
Auburn, Maine

NO PARCEL 114,79,34,35,66

41D



Brown Stacking Mill  
 Historic District  
 Assessor Map 41B

KEY:

- Boundary
- National Register Number
- Photo Number

Ipswich (Essex County), Massachusetts  
 2012

For Assessment Purposes Only  
 Not For Property Conveyances

41D SCALE 1" = 100'  
 ZONING AS SHOWN

REVISED TO JAN. 1, 1995  
 John E. O'Donnell & Associates  
 Auburn, Maine

NO PARCELS 244, 245  
 41B



## The Commonwealth of Massachusetts

William Francis Galvin, Secretary of the Commonwealth  
Massachusetts Historical Commission

July 15, 1996

Carol Shull  
Keeper  
National Register of Historic Places  
Department of the Interior  
National Park Service  
P. O. Box 37127  
Washington, D. C. 20013-7127



Dear Ms. Shull:

Enclosed please find the following nomination form:

Brown Stocking Mill Historic District, Ipswich (Essex County), Massachusetts, 01938

The nomination has been voted eligible by the State Review Board and has been signed by the State Historic Preservation Officer. Owners were notified of pending State Review Board consideration 30-75 days before the meeting and were afforded the opportunity to comment.

Sincerely,

A handwritten signature in cursive script that reads "Betsy Friedberg".

Betsy Friedberg  
National Register Director  
Massachusetts Historical Commission

enclosure

cc: Marjorie H. Robie, Chairperson, Ipswich Historical Commission, Town Hall, 30 South  
Main Street, Ipswich, MA 01938  
Mary P. Conley, Ipswich Historical Commission  
Lisa Hartman, Preservation Consultant, 1417 Beacon Street, #9, Brookline, MA 02146  
Richard Candee, Director, Preservation Studies Program, Boston University, 226 Bay  
State Road, Boston, MA 02215