



East Portland Historic District
Portland, Multnomah, Oregon

E. J. O'Brien for Historic Dimensions
615 SE Alder, Suite 205; Portland, OR
Roll 9/10
July, 1989

97214

looking north from Weatherly Building
#1 of 26



EAST PORTLAND HISTORIC DISTRICT
PORTLAND, MULTNOMAH, OREGON

E. J. O'BRIEN FOR HISTORIC DIMENSIONS
615 SE Alder, Suite 205; Portland, OR 97214
Roll 9/5
July, 1989

looking northwest from Weatherly Bldg.
#2 OF 26



East Portland Historic District
Portland, Multnomah, Oregon

EJ O'BRIEN FOR HISTORIC DIMENSIONS
615 SE Alder, Suite 205, Portland, 97214
Roll 9/11
July, 1989

looking south from Weatherly Building
#3 OF 26



East Portland Historic District
Portland, Multnomah, Oregon

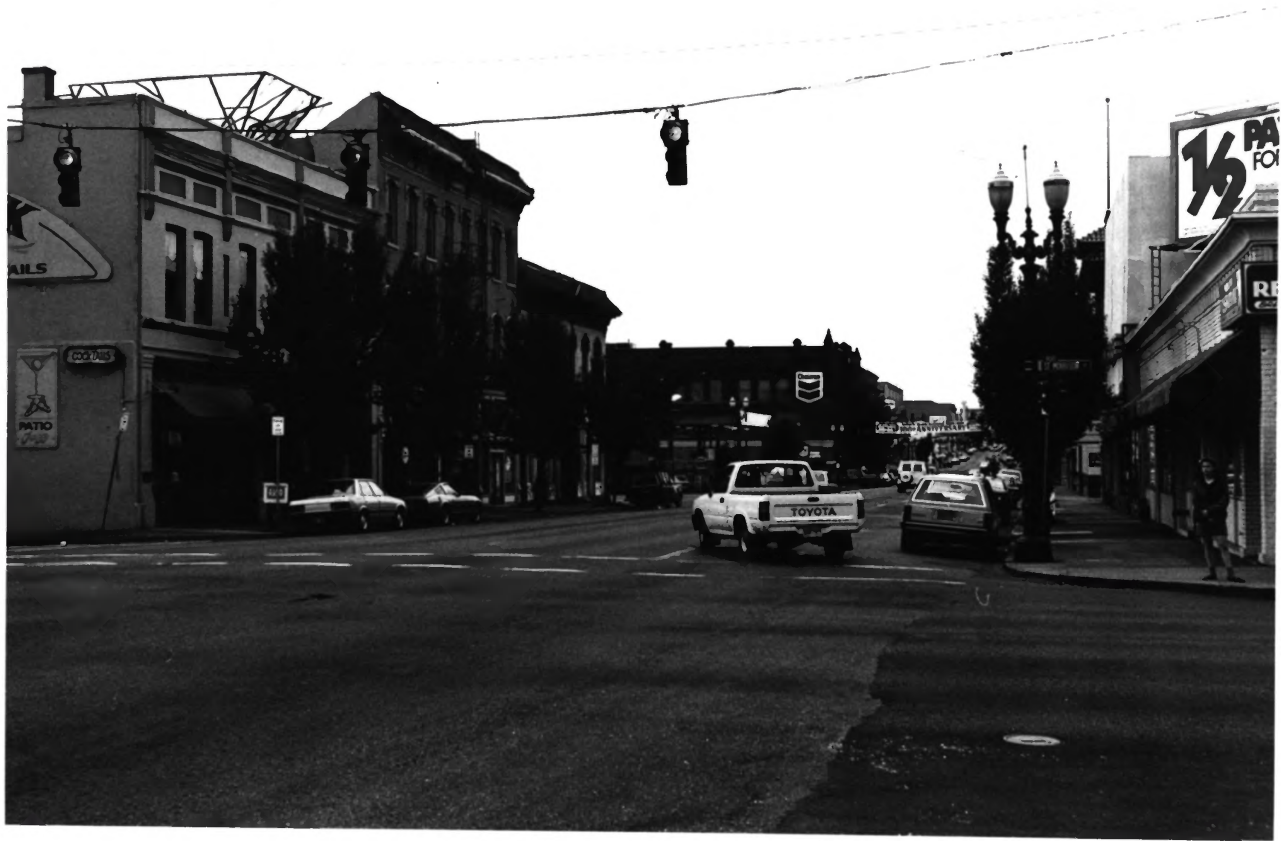
E.J. O'Brien For Historic Dimensions
615 E. Alder, Suite 205; Portland, OR 97214

July, 1989

Roll 9/2

looking north on Grand Ave. from Washington St.

#4 of 26



East Portland Historic District

Portland, Multnomah, Oregon

Looking north on S.E. Grand Ave.

E. J. O'BRIEN FOR HISTORIC DIMENSIONS

July, 1989

619 SE Alder, Suite 205; Portland, OR 97214

Roll 8/10

View looking north on Grand Ave

#5 OF 26

SERVICE ENTRANCE



East Portland Historic District
Portland, Multnomah, OREGON

EJ. OIPRIEN for Historic Mansions
July 1989

615 SE Alder, Suite 205; Portland OR 97214
Roll 8/8

looking north on SE Grand Avenue

#6 of 26



East Portland Historic District
Portland, Multnomah, Oregon

E.J. O'Brien for historic dimensions
July, 1989

615 SE Alder, Suite 205; Portland, OR 97214
Roll 8/23

looking west on SE Alder

#7 of 26

Inventory #s 70, 69



SCHUCK'S
CUSTOMER
PARKING

STOP

EAST PORTLAND HISTORIC DISTRICT
PORTLAND, MULTNOMAH, OREGON

E. J. O'Brien FOR HISTORIC DIMENSIONS
615 SE Alder, Suite 205; Portland, OR 97214
Roll 8117
July, 1989

Looking south from S.E. 6th and S.E. Ankeny.
#8 OF 26

Inventory # 26



EAST PORTLAND GRAND AVENUE HISTORIC DISTRICT 32

1 Paquet Building / 1005-25 SE Grand

2 Portland, Multnomah, Oregon

3 David Adams, 615 SE Alder, Suite 205; Portland 97214

4 May 1989

FOR HISTORIC DIMENSIONS

5 ROTT 3114

6 Perspective view looking NE

7 #9 OF 26

8 Secondary

Inventory # 4



EAST PORTLAND GRAND AVENUE HISTORIC DISTRICT #118

- 1 Neustater, N.B. Building | 1108 SE Grand
- 2 Portland, Multnomah, Oregon
- 3 David Adams, 615 SE Alder, Suite 205; Port 97214
for HISTORIC DIMENSIONS
- 4 May 1989
- 5 ROIT 2/28
- 6 Perspective view looking SE
- 7 #10 OF 26
- 8 Primary

Inventory # 63



EAST PORTLAND GRAND AVENUE HISTORIC DISTRICT 27

1. West's Block #2, 721 SE Grand Ave.
2. Portland, Multnomah, Oregon
3. David Adams, 615 SE Alder, Suite 205; Port 97214
4. July 1989
FOR HISTORIC DIMENSIONS
5. Roll 419
- 6.
7. #11 OF 26
8. East ELEVATION
West's Block #2, primary



~~EAST PORTLAND~~ GRAND AVENUE HISTORIC DISTRICT
Hotel Harding and Barber Block 500 Block Grand Ave.

Portland, Multnomah, Oregon .

David Adams for historic dimensions
May, 1989

Roll 7/17

Perspective looking southeast

Hotel Harding - primary, Barber Block - primary
#12 OF 26

Inventory #s 43, 44



EAST PORTLAND GRAND AVENUE HISTORIC DISTRICT

- 1 Osborn Hotel | 203-07 SE Grand
- 2 Portland, Multnomah, Oregon
- 3 David Adams, 615 SE Alder, Suite 205 Port 97214
- 4 May 1989 For Historic Dimensions
- 5 Roll 5116
- 6 Perspective view looking SW
- 7 #13 of 26
- 8 Primary (individually listed on National Register)

Inventory # 21



EAST PORTLAND GRANT AVENUE HISTORIC DISTRICT

- 1 McKinley Apartments/621-35 SE Morrison
- 2 Portland, Multnomah, Oregon
- 3 David Adams, 615 SE Alder, Suite 205; Port 97214
- 4 May 1989 *for historic dimensions*
- 5 Roll 4121
- 6 Perspective view looking NW
- 7 #14 of 26
- 8 Primary

Inventory # 46



EAST PORTLAND GRAND AVENUE HISTORIC DISTRICT

- 1 Pacific States Telephone and Telegraph Building / 532 SE Ankeny
- 2 Portland, Multnomah, Oregon
- 3 David Adams, 615 SE Alder, Suite 205; Port 97214
For HISTORIC DIMENSIONS
- 4 May 1989.
- 5 ROIT 5/11
- 6 Perspective View looking SW
- 7 #15 OF 26
- 8 Primary

INVENTORY # 26



EAST PORTLAND GRAND MULTNOMAH HISTORIC DISTRICT

- 1 City water office/622-26 SE Alder
- 2 Portland, Multnomah, Oregon
- 3 David Adams, 615 SE Alder, Suite 205; Port 97214
- 4 May 1989
For historic dimensions
- 5 ROTI 4123
- 6 Perspective view looking SW
- 7 #16 OF 26
- 8 Primary

Inventory # 70



EAST PORTLAND GRAND AVENUE HISTORIC DISTRICT

- 1 Barber Block 1532-38 SE Grand
- 2 Portland, Multnomah, Oregon
- 3 David Adams, 615 SE Alder Suite 205, Portland, 97214
- 4 May 1989 *FOR HISTORIC DIMENSIONS*
- 5 ROIP 7/12
- 6 Perspective View looking NE, West elevation
- 7 #17 of 26
- 8 Primary (individually listed on National Register)

Inventory # 44



The Address Supply Co.
BUREAU OF ADDRESSING

OFFICE
SUPPLY CO.

EAST PORTLAND GRANT AVENUE HISTORIC DISTRICT #43

- 1 Orient Lodge F.O.O.F. #17/706-10 SE 6th
- 2 Portland, Multnomah, Oregon
- 3 David Adams, 615 SE Alder, Suite 205, Port 97214
FOR HISTORIC DIMENSIONS
- 4 May 1989
- 5 ROIT 4/24
- 6 Perspective view looking SE
- 7 #18 OF 26
- 8 Primary

INVENTORY #69



KEYS

KEYS

ATLAS

LOCKS KEYS CUTS

PORTLAND

EAST PORTLAND GRAND AVENUE HISTORIC DISTRICT #103

- 1 Lambert, A.W., Building / 702-10 SE Grand
- 2 Portland, Multnomah, Oregon
- 3 David Adams; 615 SE Alder, Suite 205 Port 97214
- 4 May 1989
FOR HISTORIC DIMENSIONS
- 5 Roll 4/12
- 6 Perspective view looking SE
- 7 #19 OF 26
- 8 Primary

Inventory #49



ANNEX
FURNITURE
231
576

Color TV
BUNK
BEDS

QUEEN
SETS

KING
SETS

DRESSERS
CHESTS

PAINT
NAILS
GLASS

231 576

EAST-PORTLAND GRAND AVENUE HISTORIC DISTRICT

- 1 Billingsley, J.D., Building/400-18 SE Grand (1911)
- 2 Portland, Multnomah, Oregon
- 3 David Adams, 615 SE Alder, Suite 205; Portland 97214
- 4 May 1989 For Historic Dimensions
- 5 Roll 6/31
- 6 East Elevation
- 7 #20 of 26
- 8 Primary

INVENTORY # 40



East Portland Historic District

Weatherly Building⁽¹⁹²⁸⁾, 500-534 SE Morrison; # 107
Portland, Multnomah, Oregon

E. J. O'BRIEN FOR HISTORIC DIMENSIONS

July, 1989

615 SE Alder, Suite 205; Portland, OR 97214
Roll 4/7

Perspective from northwest corner

Secondary

#21 OF 26

Inventory # 53



15017
FIRST PORTLAND GRAND AVENUE HISTORIC DISTRICT

- 1 Anna Chaperon Building / 1218 SE Grand
- 2 Portland, Multnomah, Oregon
- 3 David Adams, 615 SE Alder, Suite 205, Port 97214
- 4 May 1989 FOR HISTORIC DIMENSIONS
- 5 Roll 3114
- 6 Perspective view looking SE
- 7 #22 OF 26
- 8 Secondary

Inventory # 65



EAST PORTLAND GRAND AVENUE HISTORIC DISTRICT

1 Thayer, Viola, Building 225 SE 6th

2 Portland, Multnomah, Oregon

3 David Adams, 615 SE Alder, Suite 205; Port 97214

4 May 1989

FOR HISTORIC DIMENSIONS

5 Roll 613

6 Perspective view looking NE

7 #23 of 26

8 Secondary

Inventory # 36



EAST PORTLAND GRAND AVENUE HISTORIC DISTRICT

- 1 EastSide Mortuary 1537 SE Alder
- 2 Portland, Multnomah, Oregon
- 3 David Adams, 615 SE Alder, Suite 205, Port 97214
- 4 May 1989 FOR HISTORIC DIMENSIONS
- 5 Roll 4 / 30
- 6 Perspective View looking NW
- 7 #24 OF 26
- 8 Secondary

Inventory # 47



EAST PORTLAND GRAND AVENUE HISTORIC DISTRICT

- 1 Morgan, Keith + Cooke Building | 420-38 SE Grand
- 2 Portland, Multnomah, Oregon
- 3 David Adams, 615 SE Alder, Suite 205; Port 97214
- 4 May 1989 FOR HISTORIC DIMENSIONS
- 5 Roll 6/29
- 6 Perspective view looking NE
- 7 #25 of 26
- 8 HISTORIC NON-CONTRIBUTING

INVENTORY #41

5 STORES & growing!
Serving the Tri-State Area
Portland Oregon City Hubbard

AVAILABLE
248-8777

WE
SPECIALIZE
IN
PHOTO EQUIPMENT

WE
SPECIALIZE
IN
PHOTO EQUIPMENT

← 4 11



EAST PORTLAND GRAND AVENUE HISTORIC DISTRICT

1 1226 SE Grand

121

2 Portland, Multnomah, OREGON

3 David Adams, 615 SE Alder, Suite 205; Port 97214

4 May 1989

FOR HISTORIC DIMENSIONS

5 ROOM 2119

6 Perspective view looking NE

7 #26 OF 26

8 SECONDARY

INVENTORY # 65