



MOORE'S CREEK BRIDGE

Ft. Pierce

St. Lucie County, FL

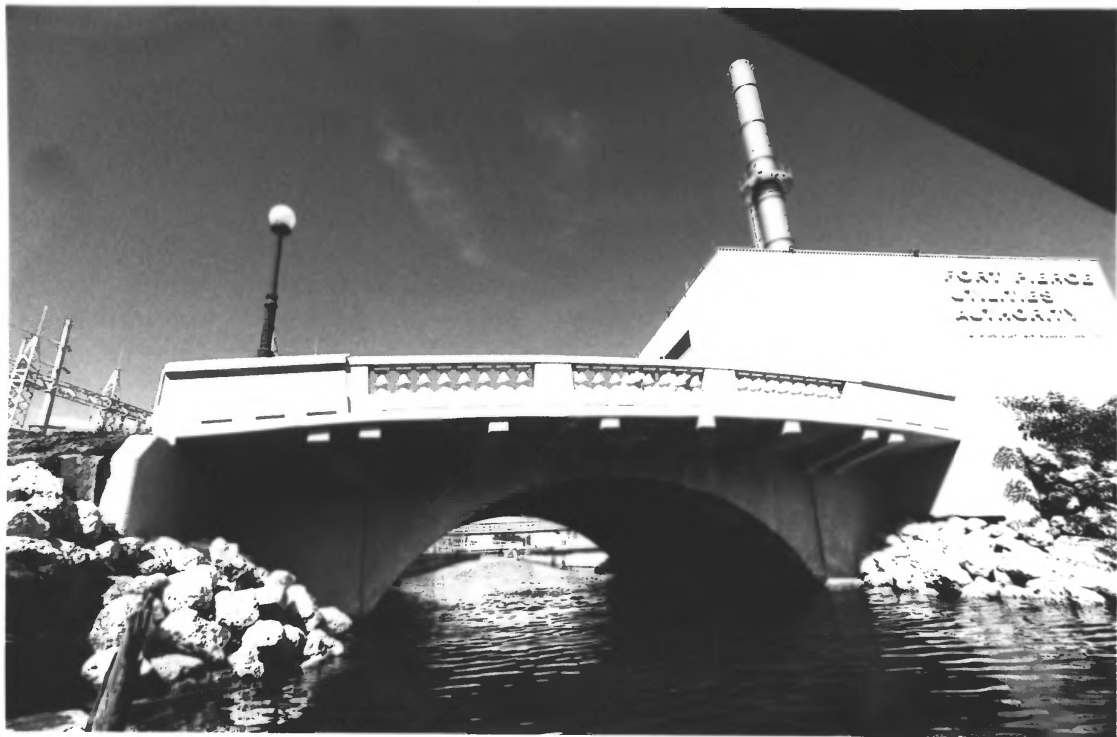
1 / 11



MOORE'S CREEK BRIDGE

ST. LUCIE COUNTY, FL

2/14



Moore's Creek Bridge

St. Lucie County, Florida

3/11



Moore's Creek Bridge

St. Lucie Co., FL

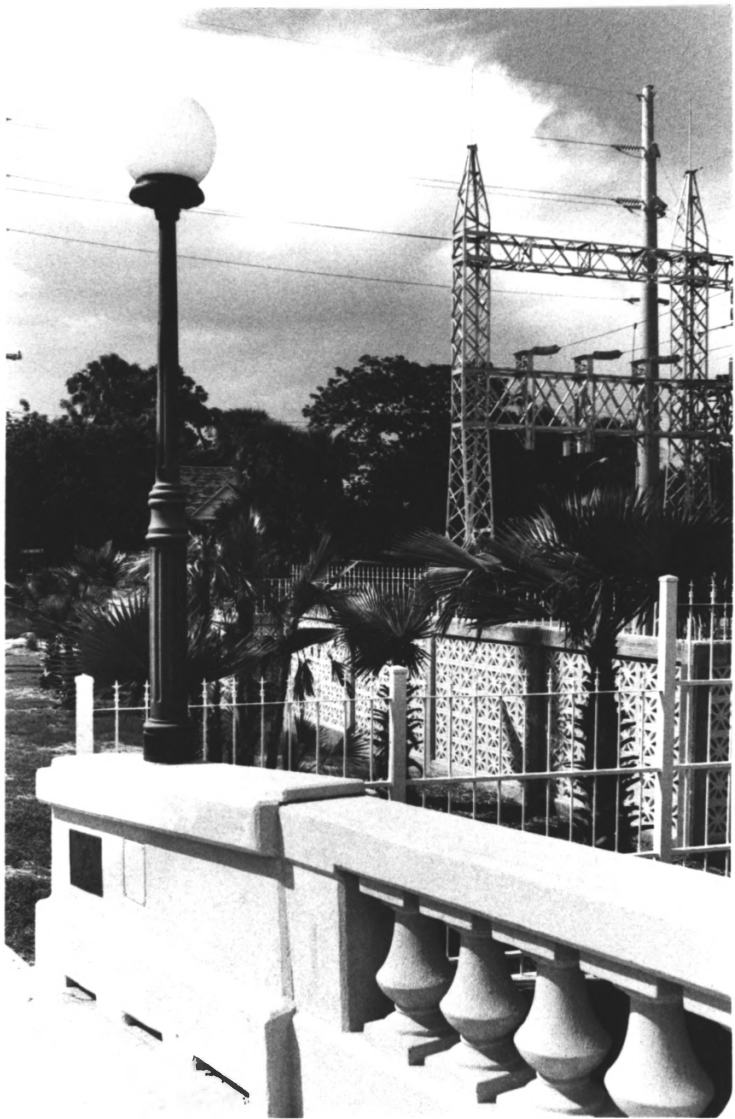
4/11



Moore's Creek Bridge

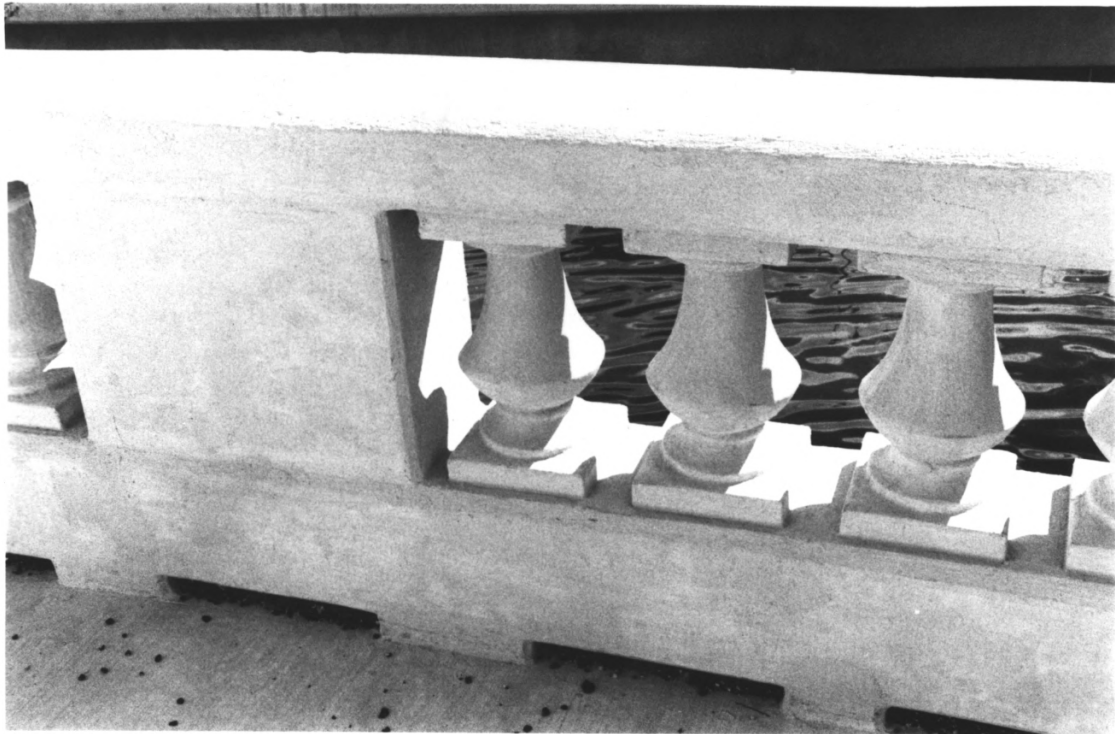
St. Lucie County, FL

5/11



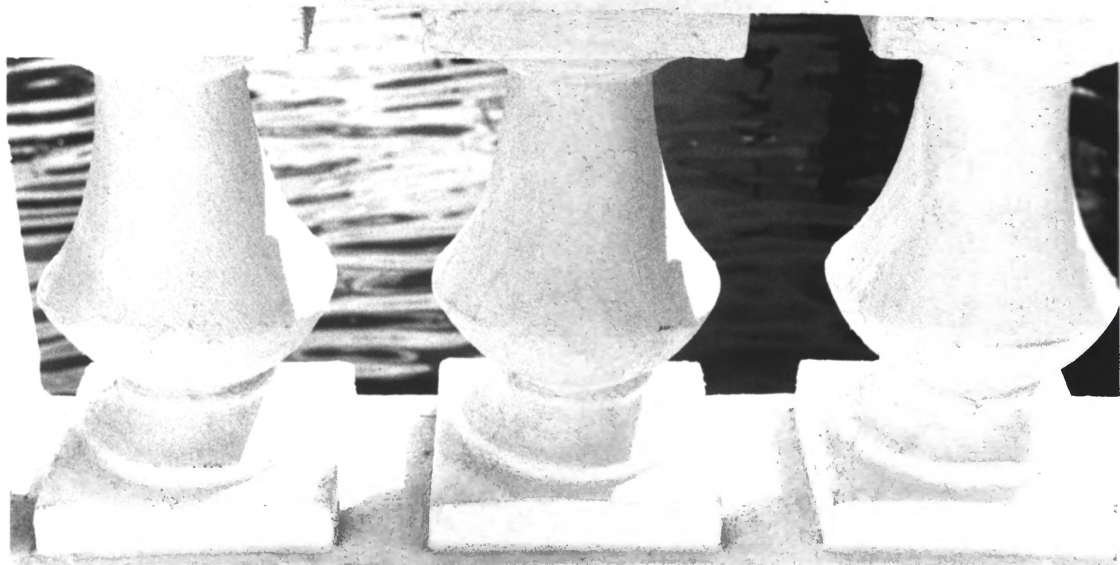
Moore's Creek Bridge
St. Lucie County, FL

7/11



Moore's Creek Bridge
St. Lucie County, FL

6/14



MOORE'S CREEK BRIDGE

St. Lucie County, FL

8/11

CITY COMMISSIONERS

MAYOR

EDWARD G. ENNS

MARY ANN BRYAN

REGINALD B. SESSIONS

ROBERT J. BENTON III

R. DUKE NELSON

CITY MANAGER

DENNIS W. BEACH

CITY ENGINEER

HECTOR P. ARIAS

1997

Moore's Creek Bridge

St. Lucie, FL

19
/ 14

Kodak
PAPER

CITY COMMISSIONERS

C. E. CAHOW, MAYOR.

J. A. MCNEILL.

W. I. FEE.

W. AUSTIN SMITH, CITY MANAGER.

CHARLES C. BURRY, CLERK-AUDITOR.

PAUL ROSS MOORE, CITY ENGINEER.

Moore's Creek Bridge

St. Lucie County, FL

10 ~~11~~



MOORE'S CREEK BRIDGE

ST. LUGIE COUNTY, FL

~~11~~
~~11~~
~~11~~