



UNITED STATES DEPARTMENT OF THE INTERIOR
NATIONAL PARK SERVICE

NATIONAL REGISTER OF HISTORIC PLACES

PROPERTY PHOTOGRAPH FORM

(Type all entries - attach to or enclose with photograph)

STATE <u>Minnesota</u>	
COUNTY <u>Hennepin</u>	
FOR NPS USE ONLY	
ENTRY NUMBER <u>71.3.27.0001</u>	DATE <u>3/11/71</u>

1. NAME

COMMON: St. Anthony Falls District

AND/OR HISTORIC:

2. LOCATION

STREET AND NUMBER:

CITY OR TOWN:

Minneapolis

STATE:

Minnesota

CODE

27

COUNTY:

Hennepin

CODE

053

3. PHOTO REFERENCE

PHOTO CREDIT: Peter Hall

DATE OF PHOTO: 1970

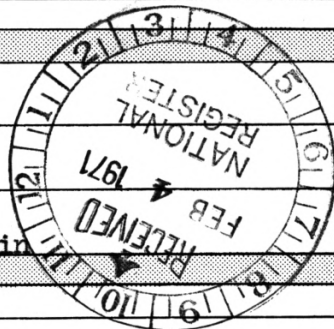
NEGATIVE FILED AT:

Minnesota Historical Society, 690 Cedar Street, St. Paul, Minnesota

4. IDENTIFICATION

DESCRIBE VIEW, DIRECTION, ETC.

Aerial view of part of St. Anthony Falls District, looking from west bank (bottom) toward east bank (top). Bridge is Stone Arch Bridge. Pillsbury A Mill is visible on east bank, as is Main Street, fronting the river on its east bank.



SEE INSTRUCTIONS



NPS Number

71.3.27.0001

UNITED STATES DEPARTMENT OF THE INTERIOR
NATIONAL PARK SERVICE

NATIONAL REGISTER OF HISTORIC PLACES

PROPERTY PHOTOGRAPH FORM

(Type all entries - attach to or enclose with photograph)

STATE

Minnesota

COUNTY

Hennepin

FOR NPS USE ONLY

ENTRY NUMBER

DATE

71.3.27.0001

3/11/71

1. NAME

COMMON: St. Anthony Falls District

AND/OR HISTORIC:

2. LOCATION

STREET AND NUMBER:

CITY OR TOWN:

Minneapolis

STATE:

Minnesota

CODE

22

COUNTY:

Hennepin

CODE

053

3. PHOTO REFERENCE

PHOTO CREDIT: Diana Feldman

DATE OF PHOTO: February 1971

NEGATIVE FILED AT:

Minnesota Historical Society, 690 Cedar Street, St. Paul, Minnesota

4. IDENTIFICATION

DESCRIBE VIEW, DIRECTION, ETC.

View of Eastman Flats looking west along Grove Street on Nicollet Island.

SEE INSTRUCTIONS



UNITED STATES DEPARTMENT OF THE INTERIOR
NATIONAL PARK SERVICE

NATIONAL REGISTER OF HISTORIC PLACES

PROPERTY PHOTOGRAPH FORM

(Type all entries - attach to or enclose with photograph)

STATE

Minnesota

COUNTY

Hennepin

FOR NPS USE ONLY

ENTRY NUMBER

DATE

1. NAME

COMMON: St. Anthony Falls District

AND/OR HISTORIC:

2. LOCATION

STREET AND NUMBER:

CITY OR TOWN:

Minneapolis

STATE:

Minnesota

CODE

22

COUNTY:

Hennepin

CODE

053

3. PHOTO REFERENCE

PHOTO CREDIT: Diana Feldman

DATE OF PHOTO: February 1971

NEGATIVE FILED AT:

Minnesota Historical Society, 690 Cedar Street, St. Paul, Minnesota

4. IDENTIFICATION

DESCRIBE VIEW, DIRECTION, ETC.

1st Street South looking northwest from 8th Avenue South to 5th Avenue South.
Buildings from left to right are: Washburn A Mill and elevator, North
Star Woolen Mill Building, and Crown Roller Mill.

SEE INSTRUCTIONS



UNITED STATES DEPARTMENT OF THE INTERIOR
NATIONAL PARK SERVICE

NATIONAL REGISTER OF HISTORIC PLACES

PROPERTY PHOTOGRAPH FORM

(Type all entries - attach to or enclose with photograph)

STATE Minnesota	
COUNTY Hennepin	
FOR NPS USE ONLY	
ENTRY NUMBER 71.3.27.0001	DATE 3/11/71

1. NAME

COMMON: St. Anthony Falls District

AND/OR HISTORIC:

2. LOCATION

STREET AND NUMBER:

CITY OR TOWN:

Minneapolis

STATE:

Minnesota

CODE

27

COUNTY:

Hennepin

CODE

053

3. PHOTO REFERENCE

PHOTO CREDIT: Peter Hall

DATE OF PHOTO: 1970

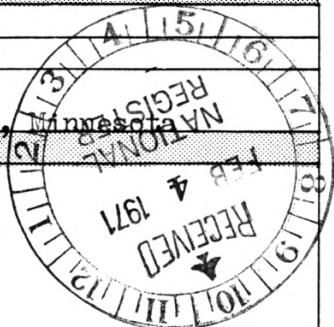
NEGATIVE FILED AT:

Minnesota Historical Society, 690 Cedar Street, St. Paul, Minnesota

4. IDENTIFICATION

DESCRIBE VIEW, DIRECTION, ETC.

View of Pillsbury A Mill from the east river bank.



SEE INSTRUCTIONS



UNITED STATES DEPARTMENT OF THE INTERIOR
NATIONAL PARK SERVICE

NATIONAL REGISTER OF HISTORIC PLACES
PROPERTY PHOTOGRAPH FORM

(Type all entries - attach to or enclose with photograph)

STATE Minnesota	
COUNTY Hennepin	
FOR NPS USE ONLY	
ENTRY NUMBER 113,27,0001	DATE 3/11/71

1. NAME

COMMON: St. Anthony Falls District
AND/OR HISTORIC:

2. LOCATION

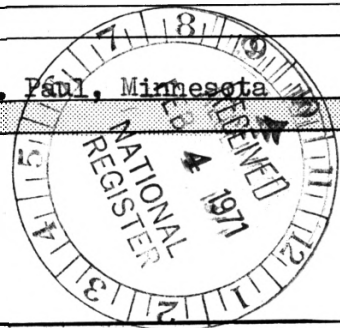
STREET AND NUMBER:
CITY OR TOWN:
Minneapolis
STATE: Minnesota CODE 27 COUNTY: Hennepin CODE 053

3. PHOTO REFERENCE

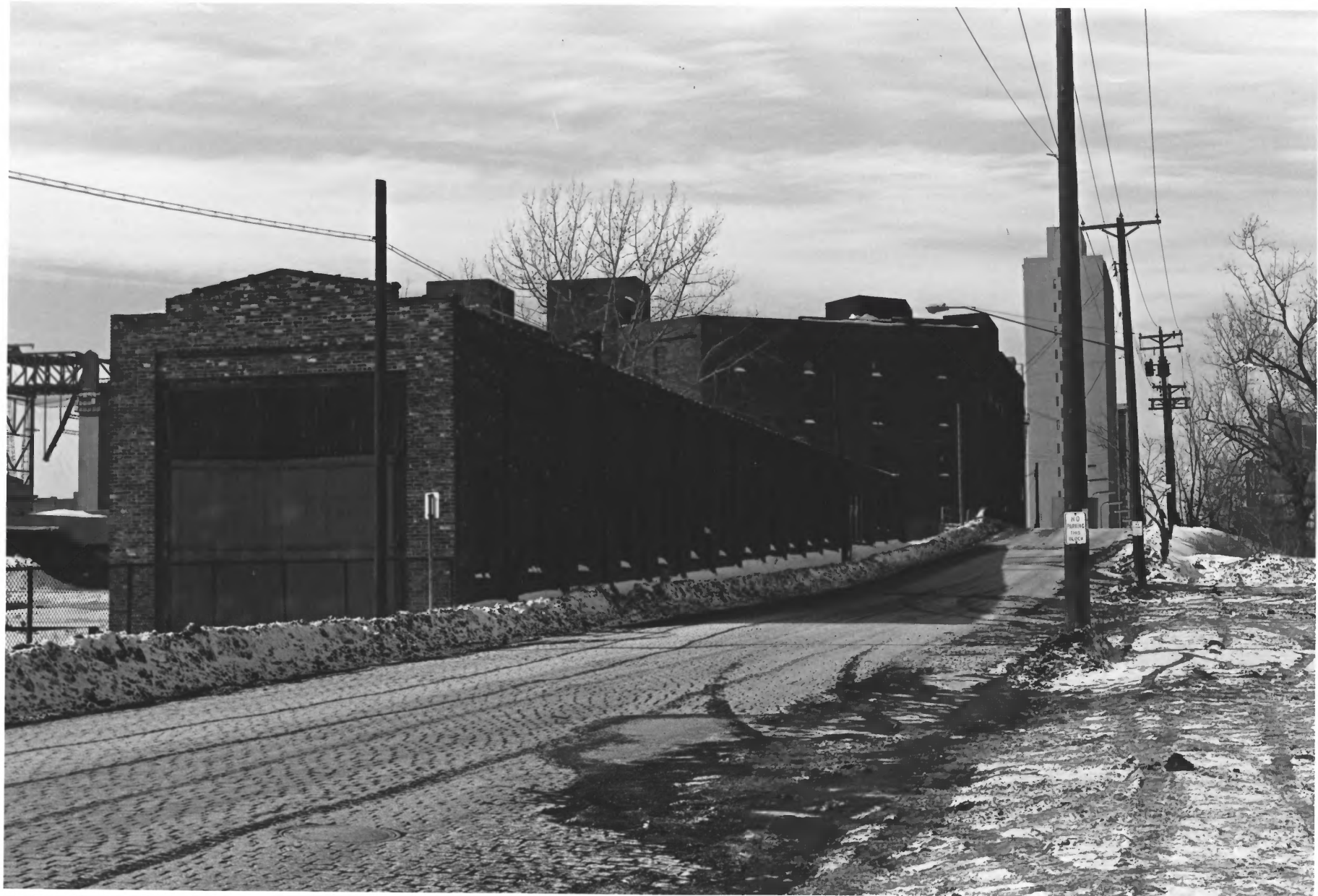
PHOTO CREDIT: Diana Feldman
DATE OF PHOTO: 1970
NEGATIVE FILED AT:
Minnesota Historical Society, 690 Cedar Street, St. Paul, Minnesota

4. IDENTIFICATION

DESCRIBE VIEW, DIRECTION, ETC.
127 Main Street S.E. (building on left)
Union Iron Works building (on right)
View is from river bank along Main Street S.E.



SEE INSTRUCTIONS



UNITED STATES DEPARTMENT OF THE INTERIOR
NATIONAL PARK SERVICE

NATIONAL REGISTER OF HISTORIC PLACES
PROPERTY PHOTOGRAPH FORM

(Type all entries - attach to or enclose with photograph)

STATE
Minnesota

COUNTY
Hennepin

FOR NPS USE ONLY

ENTRY NUMBER

DATE

1. NAME

COMMON: St. Anthony Falls District

AND/OR HISTORIC:

2. LOCATION

STREET AND NUMBER:

CITY OR TOWN:

Minneapolis

STATE:

Minnesota

CODE

22

COUNTY:

Hennepin

CODE

053

3. PHOTO REFERENCE

PHOTO CREDIT: Diana Feldman

DATE OF PHOTO: February 1971

NEGATIVE FILED AT:

Minnesota Historical Society, 690 Cedar Street, St. Paul, Minnesota

4. IDENTIFICATION

DESCRIBE VIEW, DIRECTION, ETC.

1st Street South, looking northwest from 4th Avenue South to 3rd Avenue South. Buildings from left to right are: Office and Engine House and Hall and Dann Barrel Company Building.

SEE INSTRUCTIONS



UNITED STATES DEPARTMENT OF THE INTERIOR
NATIONAL PARK SERVICE

NATIONAL REGISTER OF HISTORIC PLACES

PROPERTY PHOTOGRAPH FORM

(Type all entries - attach to or enclose with photograph)

STATE

Minnesota

COUNTY

Hennepin

FOR NPS USE ONLY

ENTRY NUMBER

DATE

71.3.29.0001

3/11/71

1. NAME

COMMON: St. Anthony Falls District

AND/OR HISTORIC:

2. LOCATION

STREET AND NUMBER:

CITY OR TOWN:

Minneapolis

STATE:

Minnesota

CODE

27

COUNTY:

Hennepin

CODE

053

3. PHOTO REFERENCE

PHOTO CREDIT: Gene Becker

DATE OF PHOTO: 1962

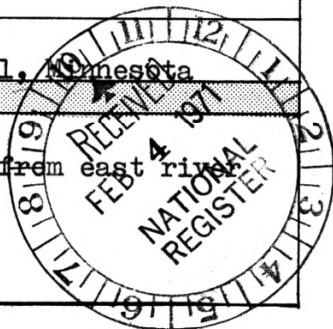
NEGATIVE FILED AT:

Minnesota Historical Society, 690 Cedar Street, St. Paul, Minnesota

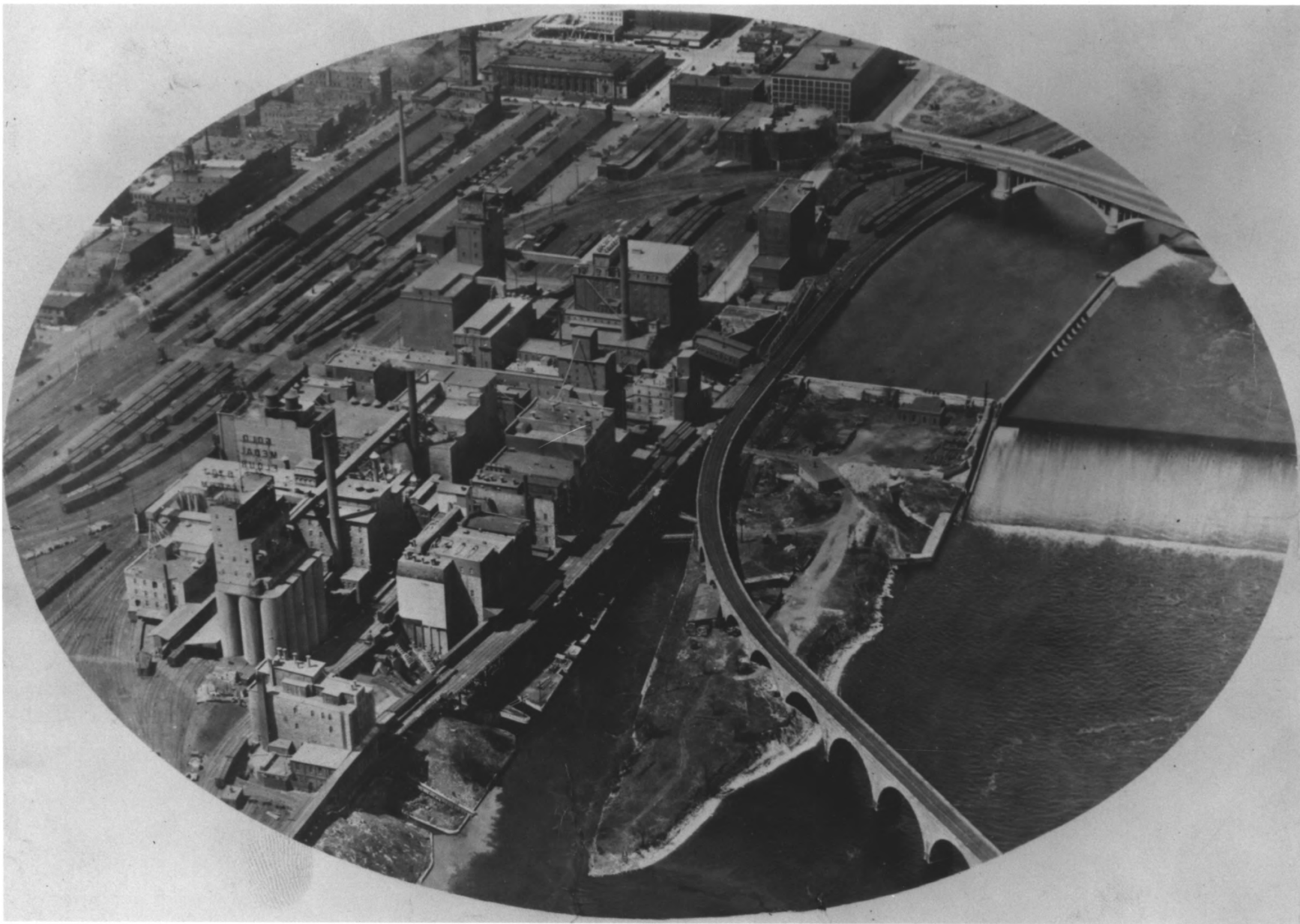
4. IDENTIFICATION

DESCRIBE VIEW, DIRECTION, ETC.

View of Third Avenue Bridge and St. Anthony Falls (part) from east river bank near Bridge.



SEE INSTRUCTIONS



ST. ANTHONY FALLS WATERPOWER AREA
ST. ANTHONY FALLS HISTORIC DISTRICT
MINNEAPOLIS, HENNEPIN CO., MINNESOTA
#18396

MH5.4
MP3.1W
p90

ST. ANTHONY FALLS WATERPOWER AREA
ST. ANTHONY FALLS HISTORIC DISTRICT
MINNEAPOLIS, MINNESOTA
PHOTOGRAPHER UNKNOWN

18396

CA. EARLY 1920s

A.V. DEPT. - MINNESOTA HISTORICAL SOCIETY
690 CEDAR ST., ST. PAUL, MN 55101

LOOKING WEST AT THE WEST SIDE
SKETCH MAP AREA #1

SAVSBURY; SATTRELEE CO. COMPLEX (219 MAIN)
ST. ANTHONY FALLS HISTORIC DISTRICT
MINNEAPOLIS, HENNINGSEN CO., MN
PHOTO: 010072 - 23A-24



SALISBURY; SATTERLEE CO.
COMPLEX, 219 MAIN

010072-23A/24

MDLS, MN

ST. ANTHONY FALLS HISTORIC DISTRICT
MDLS, MN.

C. M. KUDZIA

OCT. 1988

A. N. DETT, MN. HIST. SOC., 690 CEDAR ST.,
ST. PAUL, MN 55101

LOOKING N

38 IN SECTION 7
SKETCH MAP AREA #1



ST. ANTHONY MAIN SKYWAY.
ST. ANTHONY FALLS HISTORIC DISTRICT
MINNEAPOLIS, HENNEPIN CO., MN
PHOTO: 010072 13A-14

ST. ANTHONY MAIN SKYWAY 010072-13A/14
ST. ANTHONY FALLS HISTORIC DISTRICT
MPLS MN

C. M. KUDZIA

OCT, 1988

A. V. DEPT., MN. HIST. SOC, 690 CEDAR ST.,
ST. PAUL, MN 55101

LOOKING S

39 IN SECTION 7

SKETCH MAP AREA #1

COMMERCIAL BUILDING NEFF
ST. ANTHONY FALLS HISTORIC DISTRICT
MINNEAPOLIS, MINNESOTA CO., MN
PHOTO: 010072 - 3A-4



010072-3A/4

COMMERCIAL BUILDING INFILL
ST. ANTHONY FALLS HISTORIC DISTRICT
MPLS, MN.

C.M. KUDZIA

OCT. 1988

A.V. DEPT., MN. HIST. SOC., 690 CEDAR ST.,
ST. PAUL, MN 55101

LOOKING NE

#42 IN SECTION 7
SKETCH MAP AREA #1

PRACNA BUILDING
ST. ANTHONY FALLS HISTORIC DISTRICT
MINNEAPOLIS, HENNINGSEN CO., MN
PHOTO: 010072 2A-3



PRACNA BUILDING

010072-2A/3

ST. ANTHONY FALLS HISTORIC DISTRICT

MPLS, MN.

C. M. KUDZIA

OCT. 1988

A. V. DEPT., MN. HIST. SOC., 690 CEDAR ST.,
ST. PAUL, MN 55101

LOOKING NORTH

#43 IN SECTION 7
SKETCH MAP AREA #1



HENNEPIN ISLAND HYDROELECTRIC PLANT
ST. ANTHONY FALLS HISTORIC DISTRICT
MINNEAPOLIS, HENNEPIN CO., MN
PHOTO: 010062 9-9A

HENNEPIN ISLAND HYDROELECTRIC PLANT 010062-9/9A
ST. ANTHONY FALLS HISTORIC DISTRICT
MAPS, MN

C.M. KUDZIA

OCT. 1988

A.V. DEPT, MN. HIST. SOC., 690 CEDAR ST.
ST. PAUL, MN 55101

LOOKING W
44 IN SECTION 7
SKETCH MAP AREA #1



MAIN STREET HYDROELECTRIC STATION
ST. ANTHONY FALLS HISTORIC DISTRICT
MINNEAPOLIS, HENNEPIN CO., MN
PHOTO: 010073 11-11A

MAIN STREET HYDROELECTRIC STATION 010073-11/11A

ST. ANTHONY FALLS HISTORIC DISTRICT
MPLS, MN

C. M. KUDZIA

OCT, 1988

A. V. DEPT., MN. HIST. SOC., 690 CEDAR ST.,
ST. PAUL, MN 55101

LOOKING EAST

45 IN SECTION 7
SKETCH MAP AREA #1



LOG SLUICE
ST. ANTHONY FALLS HISTORIC DISTRICT
MINNEAPOLIS, HENNEPIN CO., MN
PHOTO: 010264-10

LOG SLUICE

010264-10

ST. ANTHONY FALLS HISTORIC DISTRICT
MPLS, MN

C.M. KUDZIA

MAY, 1989

A.V. DEPT. MN. HIST. SOC. 690 CEDAR ST.,
ST. PAUL, MN. 55101

LOOKING SE

46 IN SECTION 7
SKETCH MAP AREA #1



ST. ANTHONY FALLS HYDRAULIC LAB
ST. ANTHONY FALLS HISTORIC DISTRICT
MINNEAPOLIS, HENNEPIN CO., MN
PHOTO: 010261 9-9A

010261-9/9A

ST. ANTHONY FALLS HYDRAULIC LAB
ST. ANTHONY FALLS HISTORIC DISTRICT
MPLS, MN

C. M. KUDZIA

MAY, 1989

A. V. DEPT., MN. HIST. SOC., 690 CEDAR ST.,
ST. PAUL, MN. 55101

LOOKING NW

*47 IN SECTION 7
SKETCH MAP AREA #1



FALLS OF ST. ANTHONY, EAST CHANNEL ESCARPMENT
ST. ANTHONY FALLS HISTORIC DISTRICT
MINNEAPOLIS, HENNEPIN CO., MN
PHOTO: 010062-5/SA

010062-5/5A

FALLS OF ST. ANTHONY, EAST CHANNEL
ESCLARPMENT

ST. ANTHONY FALLS HISTORIC DISTRICT
MPLS, MN

C.M. KUDZIA

OCT. 1988

A. V. DEPT., MN. HIST. SOC., 690 CEDAR ST.,
ST. PAUL, MN 55101

LOOKING NW

54 IN SECTION 7
SKETCH MAP AREA #1



MINNEAPOLIS MILL CO. GATEHOUSE
ST. ANTHONY FALLS HISTORIC DISTRICT
MINNEAPOLIS, HENNEPIN CO., MN
PHOTO: 010263-21

MINNEAPOLIS MILL CO. GATEHOUSE
AND POWER CANAL

010263-21

ST. ANTHONY FALLS HISTORIC DISTRICT
MPLS. MN

C.M. KUDZIA

MAY, 1989

A.V. DEPT., MN. HIST. SOC., 690 CEDAR ST.,

ST. PAUL, MN 55101

LOOKING EAST

#59 IN SECTION 7
SKETCH MAP AREA #1



CATARACT FLOUR MILL
ST. ANTHONY FALLS HISTORIC DISTRICT
MINNEAPOLIS, HENNEPIN CO. MN
PHOTO: 010261-2

CATARACT FLOUR MILL

010261-2

ST. ANTHONY FALLS HISTORIC DISTRICT
MPLS, MN

C.M. KUDZIA

MAY, 1989

A.V. DEPT., MN. HIST. SOC., 690 CEDAR ST.
ST. PAUL, MN 55101

LOOKING EAST

64 IN SECTION 7

SKETCH MAP AREA #1



MINNEAPOLIS EASTERN RAILROAD TRESTLE PIERS
ST. ANTHONY FALLS HISTORIC DISTRICT
MINNEAPOLIS, HENNEPIN CO., MN
PHOTO: ©10056-7

MINNEAPOLIS EASTERN RAILROAD TRESTLE
PIERS

010056-7

ST. ANTHONY FALLS HISTORIC DISTRICT
MINNEAPOLIS, MN

C.M. KUDZIA

OCT. 1988

A.V. DEPT, MN. HIST. SOC, 690 CEDAR ST.,
ST. PAUL, MN 55101

LOOKING NE

*67 IN SECTION 7

SKETCH MAP AREA #1



UPPER ST. ANTHONY FALLS LOCK
ST. ANTHONY FALLS HISTORIC DISTRICT
MINNEAPOLIS, HENNEPIN CO., MN
PHOTO: 010058-24

UPPER ST. ANTHONY FALLS LOCK
ST. ANTHONY FALLS HISTORIC DISTRICT
MINNEAPOLIS MN

010058-24

C.M. KUDZIA

OCT. 1988

A.V. DEPT., MN. HIST. SOC. 690 CEDAR ST.,
ST. PAUL, MN 55101

LOOKING SW

16 IN SECTION 7

SKETCH MAP AREA #1



WASHBURN A MILL
ST. ANTHONY FALLS HISTORIC DISTRICT
MINNEAPOLIS, HENNEPIN CO., MN
PHOTO: 011018-13a

011018-13a

WASHBURN A MILL

ST. ANTHONY FALLS HISTORIC DISTRICT

MINNEAPOLIS, HENNEPIN CO, MN

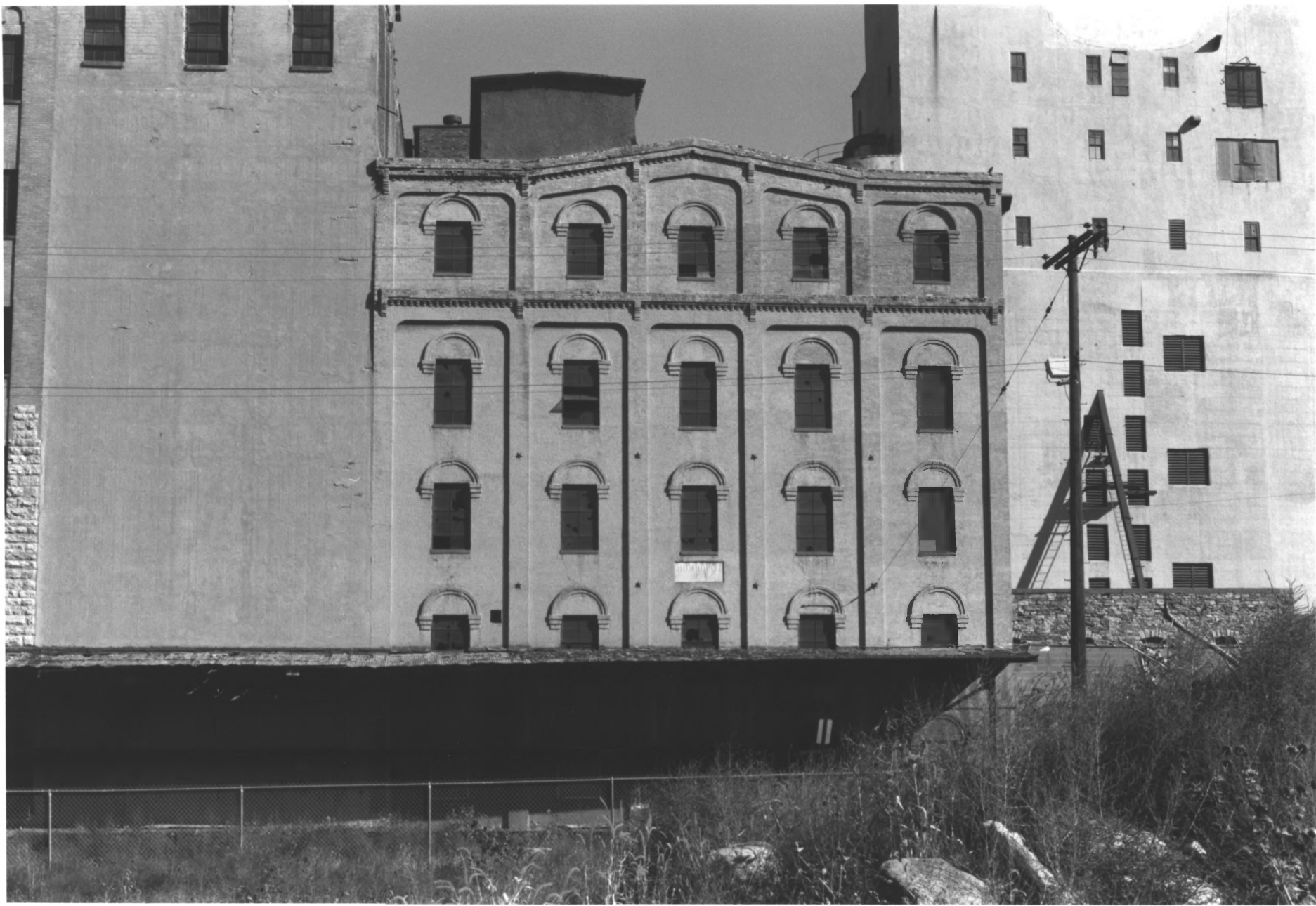
S. F. ANFINSON

APRIL 1, 1991

A. V. DEPT., MN. HIST. SOC., 690 CEDAR ST.,

ST. PAUL, MN 55101

LOOKING WEST
#17 IN SECTION 7
SKETCH MAP AREA #1



HUMBOLDT MILL
ST. ANTHONY FALLS HISTORIC DISTRICT
MINNEAPOLIS, HENNEPIN CO., MN
PHOTO: 010059 - 9A-10

010059-9A/10

HUMBOLDT MILL

ST. ANTHONY FALLS HISTORIC DISTRICT
MINNEAPOLIS, MN

C.M. KUDZIA

OCT. 1988

A.V. DETT, MN. HIST. SOC., 690 CEDAR ST.,
ST. PAUL, MN 55101

LOOKING NE

20 IN SECTION 7
SKETCH MAP AREA #1



CEMSTONE PRODUCT COMPANY BUILDING
ST. ANTHONY FALLS HISTORIC DISTRICT
MINNEAPOLIS, HENNEPIN CO., MN
PHOTO: 010264-8

010264 - 8

CEMSTONE PRODUCT CO. BLDG.
ST. ANTHONY FALLS HISTORIC DISTRICT
MPLS, MN.

C. M. KUDZIA

MAY, 1989

A. V. DEPT., MN. HIST. SOC., 690 CEDAR ST,
ST. PAUL, MN 55101

LOOKING WEST

25 IN SECTION 7
SKETCH MAP AREA #1



HENNEPIN BLUFF PARK SHELTER
ST. ANTHONY FALLS HISTORIC DISTRICT
MINNEAPOLIS, HENNEPIN CO., MN
PHOTO: 010062-12-12A

010062-12/12A

HENNEPIN BLUFF PARK SHELTER
ST. ANTHONY FALLS HISTORIC DISTRICT
MPLS, MN

C.M. KUDZIA

OCT. 1988

A.V. DEPT., MN. HIST. SOC., 690 CEDAR ST.,
ST. PAUL, MN. 55101

LOOKING SOUTH

33 IN SECTION 7
SKETCH MAP AREA #1



PILLSBURY WAREHOUSE #3
ST. ANTHONY FALLS HISTORIC DISTRICT
MINNEAPOLIS, HENNEPIN CO., MN
PHOTO: 010052 - 14A-15

010052-14A/15

PILLSBURY WAREHOUSE #3

ST. ANTHONY FALLS HISTORIC DISTRICT

MINNEAPOLIS, MN

C.M. KUDZIA

OCTOBER, 1988

A.V. DEPT., MN. HIST. SOC., 690 CEDAR ST., ST. PAUL,
MN. 55101

LOOKING NE

#34 IN SECTION 7
SKETCH MAP AREA #1



PILLSBURY WAREHOUSE #2 & CONCRETE ELEVATORS
ST. ANTHONY FALLS HISTORIC DISTRICT
MINNEAPOLIS, HENNEPIN CO., MN
PHOTO: 010052 1A-2

PILLSBURY #2 WAREHOUSE & CONCRETE ELEVATORS, 010052-1A/2
ST. ANTHONY FALLS HISTORIC DISTRICT

MINNEAPOLIS, MN

C.M. KUDZIA

OCTOBER, 1988

A.V. DEPT., MN. HIST. SOC., 690 CEDAR ST., ST. PAUL,
MN 55101

LOOKING SW

#35 IN SECTION 7
SKETCH MAP AREA #1

PILLSBURY TILE ELEVATOR
ST. ANTHONY FALLS HISTORIC DISTRICT
MINNEAPOLIS, HERMAN BRIX CO, MN
PHOTO: 010052 - 19A - 20



PILLSBURY TILE ELEVATOR

010052-19A/20

ST. ANTHONY FALLS HISTORIC DISTRICT
MINNEAPOLIS, MN

C.M. KUDZIA

OCTOBER, 1988

A.V. DEPT, MN. HIST. SOC., 690 CEDAR ST,
ST. PAUL, MN 55101

LOOKING NORTH

36 IN SECTION 7
SKETCH MAP AREA #1



PILLSBURY RESEARCH & DEVELOPMENT BUILDING
ST. ANTHONY FALLS HISTORIC DISTRICT
MINNEAPOLIS, HENNEPIN CO., MN
PHOTO: 010052-24A

PILLSBURY RESEARCH & DEVELOPMENT BLDG.,
ST. ANTHONY FALLS HISTORIC DISTRICT
MINNEAPOLIS, MN.

010052-24A

C.M. KLIDZIA

OCTOBER, 1988

A.V. DEPT., MN. HIST. SOC., 690 CEDAR ST.,
ST. PAUL, MN 55101

LOOKING NORTH

37 IN SECTION 7
SKETCH MAP AREA #1



SALISBURY; SATTERLEE CO. COMPLEX (201-205 MAIN)
ST. ANTHONY FALLS HISTORIC DISTRICT
MINNEAPOLIS, HENNEPIN CO., MN
PHOTO: 010263-2

SARISBURY AND SATTERLEE CO. COMPLEX 010263-2
(201-05 MAIN ST.)

ST. ANTHONY FALLS HISTORIC DISTRICT
MPLS, MN.

C. M. KUDZIA
MAY, 1989

A. V. DEPT., MN. HIST. SOC., 690 CEDAR ST.,
ST. PAUL, MN 55101

LOOKING EAST

38 IN SECTION 7
SKETCH MAP AREA #1



ST. ANTHONY FALLS WATERPOWER AREA
ST. ANTHONY FALLS HISTORIC DISTRICT
MINNEAPOLIS, HENNEPIN CO., MINNESOTA
7422

MH5.9
MP16
PI4

7422

ST. ANTHONY FALLS WATERPOWER AREA
ST. ANTHONY FALLS HISTORIC DISTRICT
MINNEAPOLIS, MINNESOTA
PHOTOGRAPHER: UPTON

1857

A.V. DEPT. - MINNESOTA HISTORICAL SOCIETY
690 CEDAR ST., ST. PAUL, MN 55101

LOOKING SOUTHEAST - ST. ANTHONY FALLS
AT RIGHT CENTER

SKETCH MAP AREA #1



ST. ANTHONY FALLS WATERPOWER AREA
ST. ANTHONY FALLS HISTORIC DISTRICT
MINNEAPOLIS, HENNEPIN CO., MINNESOTA
#6166 - Ag

MH5.9
MP4.33

P15

ST. ANTHONY FALLS WATERPOWER AREA
ST. ANTHONY FALLS HISTORIC DISTRICT
MINNEAPOLIS, MINNESOTA
PHOTOGRAPHER
1869.

6166-Ag

A.V. DEPT. - MINNESOTA HISTORICAL SOCIETY
610 CEDAR ST., ST. PAUL, MN 55101

LOOKING SOUTHEAST AT THE EASTMAN
TUNNEL COLLAPSE
SKETCH MAP AREA #1

ST. MILL, SASH DOORS & BLINDS
KING & SCROLL SAWING.



ST. ANTHONY FALLS WATERPOWER AREA
ST. ANTHONY FALLS HISTORIC DISTRICT
MINNEAPOLIS, HENNEPIN CO., MINNESOTA
#25483

MH5.9
MPIC

P3

ST. ANTHONY FALLS WATERPOWER AREA
ST. ANTHONY FALLS HISTORIC DISTRICT
MINNEAPOLIS, MINNESOTA
PHOTOGRAPHER: UPTON

25483

1861

A.V. DEPT. - MINNESOTA HISTORICAL SOCIETY
690 CEDAR ST., ST. PAUL, MN 55101

LOOKING NORTHEAST - OLD GOVERNMENT
GRIST MILL IS IN LOWER RIGHT
SKETCH MAP AREA #1



ST. ANTHONY FALLS WATERPOWER AREA
ST. ANTHONY FALLS HISTORIC DISTRICT
MINNEAPOLIS, HENNEPIN CO., MINNESOTA
#34476

MH5.9
MP3.1W

P97

ST. ANTHONY FALLS WATERPOWER AREA
ST. ANTHONY FALLS HISTORIC DISTRICT
MINNEAPOLIS, MINNESOTA

34476

PHOTOGRAPHER: FARR, MINNEAPOLIS
1885

A.V. DEPT- MINNESOTA HISTORICAL SOCIETY
690 CEDAR ST., ST. PAUL, MN 55101

LOOKING NORTH AT THE MINNEAPOLIS MILL CO.
CANAL GATES (53) IN 1885

SKETCH MAP AREA #1



ST. ANTHONY FALLS WATERPOWER AREA
ST. ANTHONY FALLS HISTORIC DISTRICT
MINNEAPOLIS, HENNEPIN CO., MINNESOTA
#39003

MH5.9
MPIJ
PG

ST. ANTHONY FALLS WATERPOWER AREA
ST. ANTHONY FALLS HISTORIC DISTRICT

39003

MINNEAPOLIS, MINNESOTA
PHOTOGRAPHER: J.E. QUIGLEY AERIAL PHOTOGRAPHS, MPLS.
1930

A.V. DEPT. - MINNESOTA HISTORICAL SOCIETY
690 CEDAR ST., ST. PAUL, MN. 55101

LOOKING WEST AT THE WEST SIDE
SKETCH MAP AREA #1



ST. ANTHONY FALLS WATERPOWER AREA
ST. ANTHONY FALLS HISTORIC DISTRICT
MINNEAPOLIS, HENNEPIN CO., MINNESOTA
#4133

M45.9
MP16
P15

ST. ANTHONY FALLS WATER POWER AREA
ST. ANTHONY FALLS HISTORIC DISTRICT
MINNEAPOLIS, MINNESOTA
PHOTOGRAPHER: B.F. UPTON

4133

1857

A.V. DEPT. - MINNESOTA HISTORICAL SOCIETY

690 CEDAR ST., ST. PAUL, MN 55101

LOOKING SOUTH - ST. ANTHONY FALLS IS IN CENTER.
SKETCH MAP AREA #1



MAIN STREET, STREETSCAPE
ST. ANTHONY FALLS HISTORIC DISTRICT
MINNEAPOLIS, HENNEPIN CO., MN
PHOTO: 010072-8A-9

STREETSCAPE, MAIN STREET . 010072-8A/9
ST. ANTHONY FALLS HISTORIC DISTRICT
MPLS, MN.

C. M. KUDZIA

OCT. 1988

A. V. DEPT., MN. HIST. SOC., 690 CEDAR ST.,
ST. PAUL, MN 55101

LOOKING NW

SKETCH MAP AREA #1



FALLS OF ST. ANTHONY DAM
ST. ANTHONY FALLS HISTORIC DISTRICT
MINNEAPOLIS, HENNEPIN CO., MN
PHOTO: 010057-11

010057-11

FALLS OF ST. ANTHONY DAM
ST. ANTHONY FALLS HISTORIC DISTRICT
MINNEAPOLIS, MN

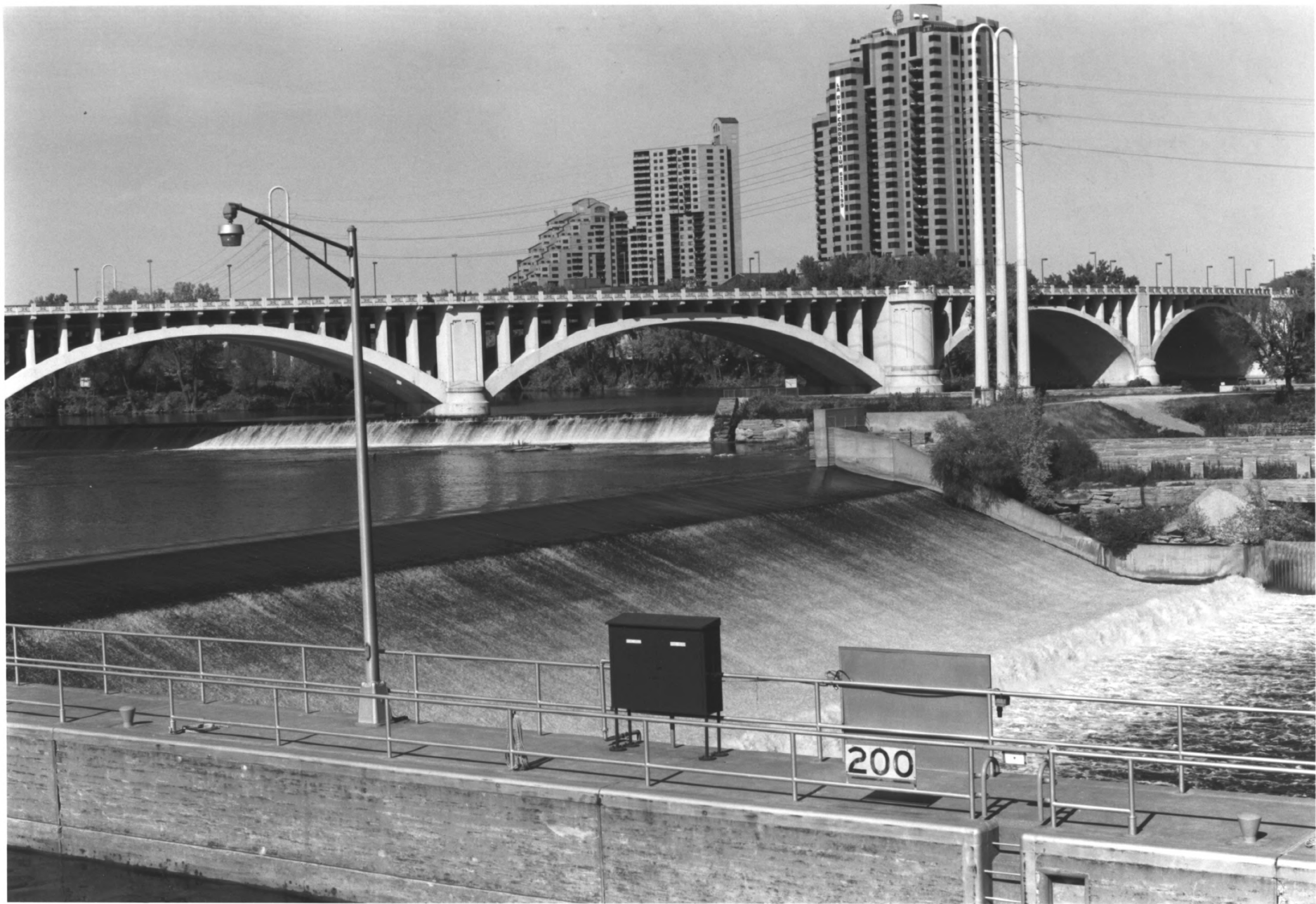
C. M. KUDZIA

OCT. 1988

A. V. DEPT., MN. HIST. SOC., 690 CEDAR ST.,
ST. PAUL, MN 55101

LOOKING SW

#1 IN SECTION 7
SKETCH MAP AREA #1



FALLS OF ST. ANTHONY APRON
ST. ANTHONY FALLS HISTORIC DISTRICT
MINNEAPOLIS, HENNINGEN CO., MIN
PHOTO: 010056-12

FALLS OF ST ANTHONY APPROX.
ST. ANTHONY FALLS HISTORIC DISTRICT
MINNEAPOLIS, MN

010056-12

C.M. KUDZIA

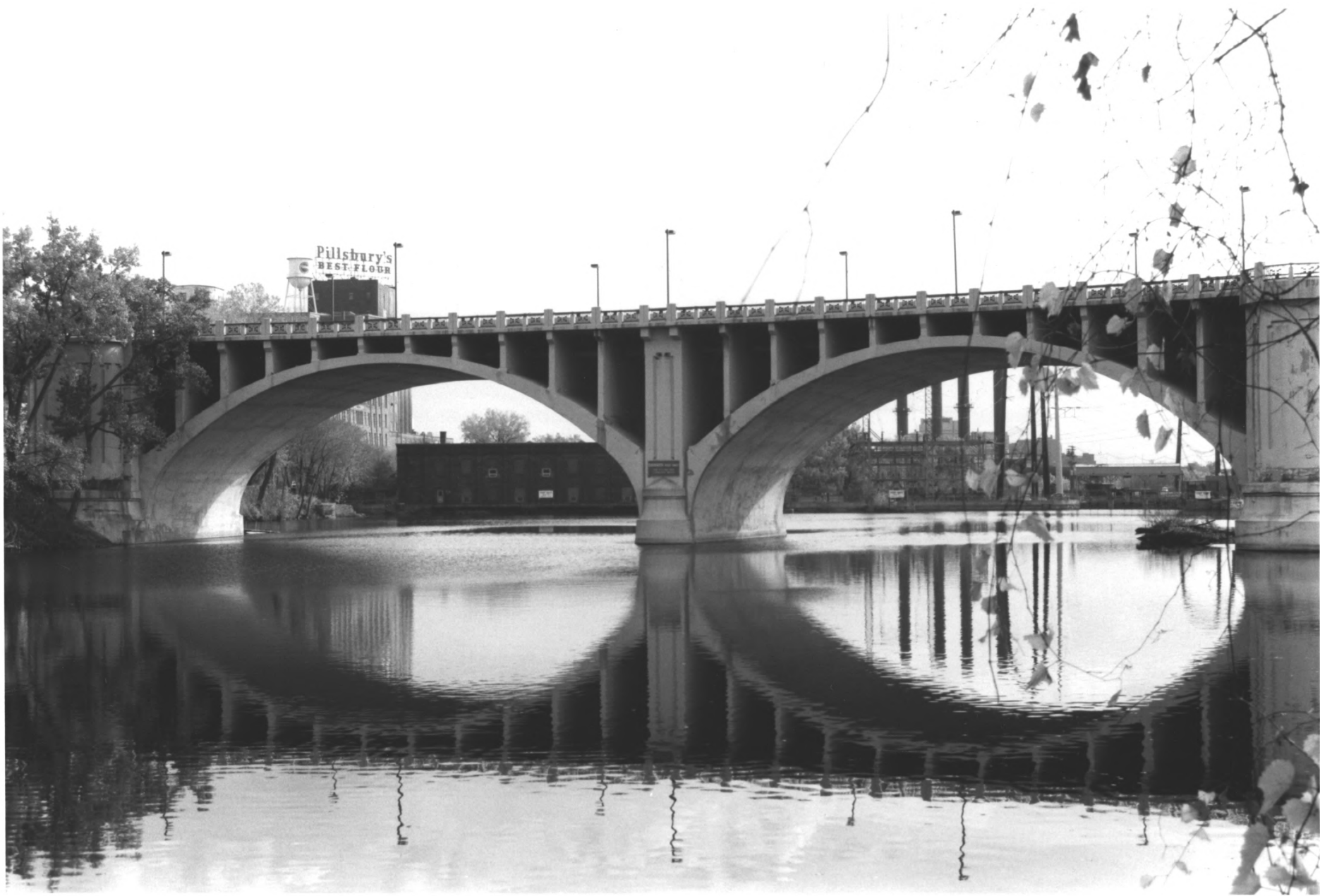
OCT. 1988

A.V. DETT, MN. HIST. SOC., 690 CEDAR ST,
ST. PAUL, MN 55101

LOOKING NORTH

#2 IN SECTION 7

SKETCH MAP AREA #1



THIRD AVENUE BRIDGE
ST. ANTHONY FALLS HISTORIC DISTRICT
MINNEAPOLIS, HENNEPIN CO., MN
PHOTO: 010073 - 4

010073 - 4

THIRD AVENUE BRIDGE

ST. ANTHONY FALLS HISTORIC DISTRICT
MTLS, MN

C.M. KUDZIA

OCT. 1988

A.V. DEPT., MN. HIST. SOC., 690 CEDAR ST.
ST. PAUL, MN 55101

LOOKING EAST

#4 IN SECTION 7
SKETCH MAP AREA #1



HALL & DANN BARREL COMPANY FACTORY
ST. ANTHONY FALLS HISTORIC DISTRICT
MINNEAPOLIS, HENNEPIN CO., MN
PHOTO: 010053-24-24A

010053-24/24A

HALL & DANN BARREL CO. FACTORY
ST. ANTHONY FALLS HISTORIC DISTRICT
MINNEAPOLIS, MN

C. M. KUDZIA
OCTOBER, 1988

A. V. DEPT., MN. HIST. SOC., 690 CEDAR ST.,
ST. PAUL, MN 55101

LOOKING NE

#5 IN SECTION 7
SKETCH MAP AREA #1



RAILROAD BRIDGE NO. L 8900
ST. ANTHONY FALLS HISTORIC DISTRICT
MINNEAPOLIS, HENNINGEN CO., MN
PHOTO: 010055-6

RAILROAD BRIDGE NO. L8900
ST. ANTHONY FALLS HISTORIC DISTRICT
MINNEAPOLIS, MN

010055-6

C.M. KUDZIA

OCTOBER, 1988

A.V. DEPT., MN. HIST. SOC., 690 CEDAR ST.,
ST. PAUL, MN 55101

LOOKING NORTH

6 IN SECTION 7

SKETCH MAP AREA #1



FUJI-YA RESTAURANT
ST. ANTHONY FALLS HISTORIC DISTRICT
MINNEAPOLIS, HENNEPIN CO., MN
PHOTO: 010054-2

FUJI-YA RESTAURANT (FOREGRND) 010054-2
ST. ANTHONY FALLS HISTORIC DISTRICT
MINNEAPOLIS, MN
C.M. KUDZIA
OCT. 1988
A.V. DEPT., MN. HIST. SOC., 690 CEDAR ST.,
ST. PAUL, MN. 55101
LOOKING SW
8 IN SECTION 7
SKETCH MAP AREA #1



CROWN ROLLER MILL
ST. ANTHONY FALLS HISTORIC DISTRICT
MINNEAPOLIS, HENNEPIN CO., MN
PHOTO: 010054-3

010054-3

CROWN ROLLER MILL

ST. ANTHONY FALLS HISTORIC DISTRICT

MINNEAPOLIS, MN

C.M. KUDZIA

OCT. 1988

A. V. DEPT, MN. HIST. SOC. 690 CEDAR ST,
ST. PAUL, MN 55101

LOOKING SOUTH

#9 IN SECTION 7
SKETCH MAP AREA #1



STANDARD MILL
ST. ANTHONY FALLS HISTORIC DISTRICT
MINNEAPOLIS, HENNEPIN CO., MN
PHOTO: 010054-15A-16

STANDARD MILL

010054-15A/16

ST. ANTHONY FALLS HISTORIC DISTRICT
MINNEAPOLIS, MN

C.M. KUDZIA

OCT., 1988

A.V. DEPT., MN. HIST. SOC., 690 CEDAR ST.,
ST. PAUL, MN 55101

LOOKING SW

11 IN SECTION 7
SKETCH MAP AREA #1

WHITNEY HOTEL ENTRANCE
ST. ANTHONY FALLS HISTORIC DISTRICT
MINNEAPOLIS, HENNINGER CO., MN
PHOTO: 010053 - 7-7A



010053-7/7A

WHITNEY HOTEL ENTRANCE
ST. ANTHONY FALLS HISTORIC DISTRICT
MINNEAPOLIS, MN

C. M. KUDZIA

OCTOBER, 1988

A. V. DEPT., MN. HIST. SOC., 640 CEDAR ST.,
ST. PAUL, MN 55101

LOOKING NE

11 IN SECTION 7
SKETCH MAP AREA #1



NORTH STAR WOOLEN MILL
ST. ANTHONY FALLS HISTORIC DISTRICT
MINNEAPOLIS, HENNEPIN CO., MN
PHOTO: 010056-0A-1

NORTH STAR WOOLEN MILL

010056-0A/1

ST. ANTHONY FALLS HISTORIC DISTRICT

MINNEAPOLIS, MN

C. M. KUOZIA

OCT. 1988

A. V. DEPT., MN. HIST. SOC., 690 CEDAR ST.

ST. PAUL, MN 55101

LOOKING EAST

14 IN SECTION 7

SKETCH MAP AREA #1



ST. ANTHONY FALLS WATERPOWER AREA
ST. ANTHONY FALLS HISTORIC DISTRICT
MINNEAPOLIS, HENNEPIN CO., MINNESOTA
200

MH5.9.
MP3.1W

P93

ST. ANTHONY FALLS WATERPOWER AREA
ST. ANTHONY FALLS HISTORIC DISTRICT

388

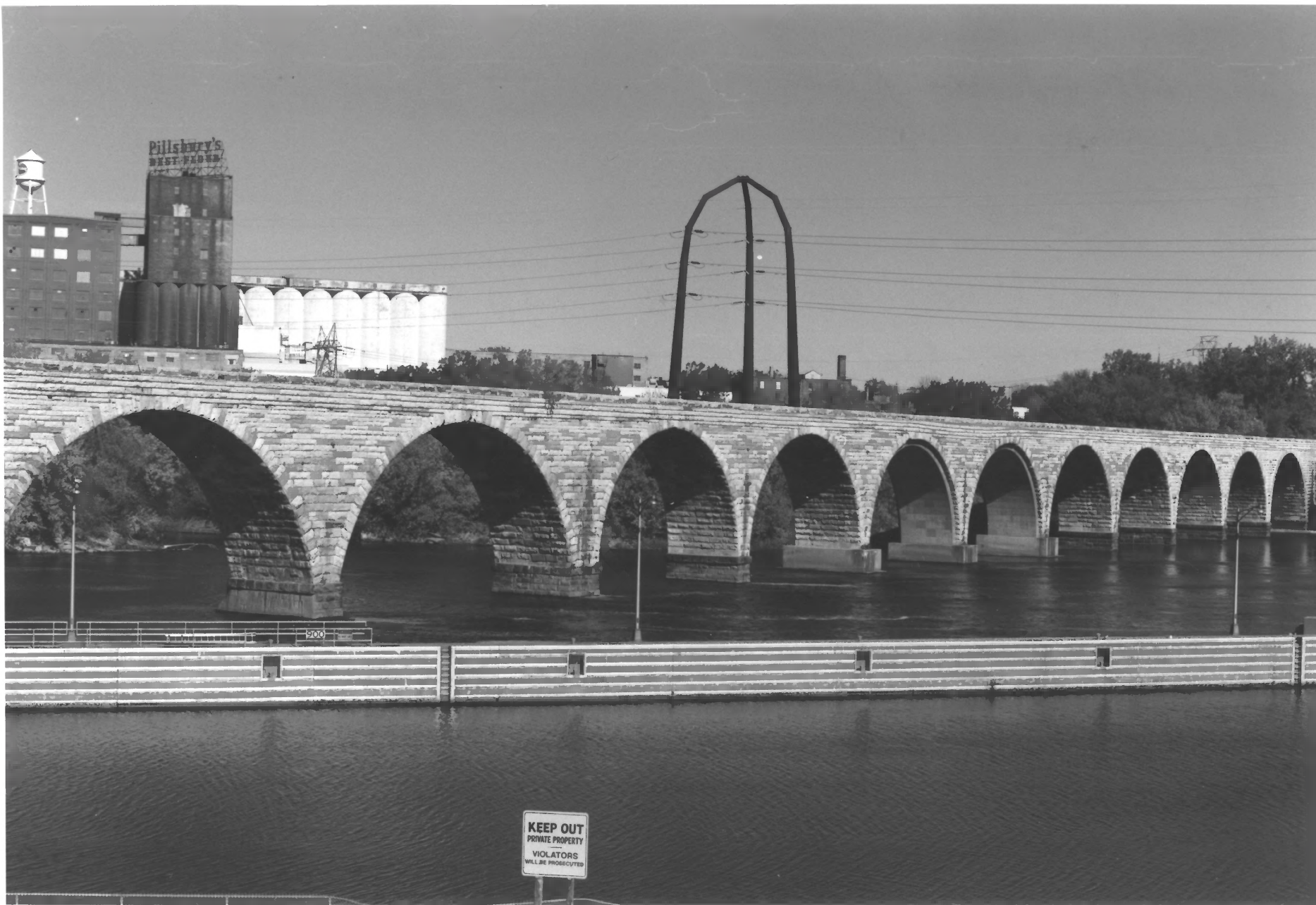
MINNEAPOLIS, MINNESOTA

PHOTOGRAPHER: UNKNOWN

CA. 1890.

A.V. DEPT. - MINNESOTA HISTORICAL SOCIETY
690 CEDAR ST., ST. PAUL, MN 55101

LOOKING NORTHEAST AT THE WEST SIDE FLOUR MILLS
SKETCH MAP AREA #1



STONE ARCH BRIDGE
ST. ANTHONY FALLS HISTORIC DISTRICT
MINNEAPOLIS, HENNEPIN CO, MN
PHOTO: 010061-24A

010061-24A

STONE ARCH BRIDGE

ST. ANTHONY FALLS HISTORIC DISTRICT

MPLS., MN

C.M. KUDZIA

OCT., 1988

A.V. DEPT., MN. HIST. SOC., 690 CEDAR ST.

ST. PAUL, MN 55101

LOOKING NW

#15 IN SECTION 7

SKETCH MAP AREA #1



FOOD FACTORY

PILLSBURY PUBLIC LIBRARY
ST. ANTHONY FALLS HISTORIC DISTRICT
MINNEAPOLIS, HENNEPIN CO., MINNESOTA
#48306

MH5.9
MP8

r131

KILLSBURY PUBLIC LIBRARY
ST. ANTHONY FALLS HISTORIC DISTRICT
MINNEAPOLIS, MINNESOTA
PHOTOGRAPHER UNKNOWN

48306

CA. 1910
A.V. DEPT. MINNESOTA HISTORICAL SOCIETY
690 CEDAR ST., ST. PAUL, MN 55101

LOOKING WEST
SKETCH MAP BUILDING #7



Pillsbury Public Library
ST ANTHONY FALLS HISTORIC DISTRICT
MINNEAPOLIS, HENNEPIN CO., MN
010843 # 20

Dillsbury Public Library, 100 University AVE SE

010843-20

ST ANTHONY FALLS HISTORIC DISTRICT

MINNEAPOLIS, MN

Bob Forde 12

NOV. 90

A.V. Dept, MN HISTORICAL SOCIETY, 690 CEDAR ST., ST PAUL, MN 55101

Looking NW

SKETCH MAP BUILDING #7



Pillsbury Public Library
ST ANTHONY FALLS HISTORIC DISTRICT
MINNEAPOLIS, HENNEPIN CO., MN
010843 # 21

Pillsbury Public Library, 100 University Ave S.E.

010843-21

ST ANTHONY FALLS HISTORIC DISTRICT

MINNEAPOLIS, MN

Bob Forder

NOV. 90

AV Dept., MN HISTORICAL SOCIETY, 690 CEDAR ST., ST PAUL, MN 55101

LOOKING S.W.

SKETCH MAP BUILDING #17



ARD GODFREY HOUSE
ST. ANTHONY FALLS HISTORIC DISTRICT
MINNEAPOLIS, HENNEPIN CO., MINNESOTA
7422

MH5.9
MP16
P14

ARD GODFREY HOUSE
ST. ANTHONY FALLS HISTORIC DISTRICT
MINNEAPOLIS, MINNESOTA
PHOTOGRAPHER: UPTON

7422

1857

A.V. DEPT. - MINNESOTA HISTORICAL SOCIETY
690 CEDAR ST., ST. PAUL, MN 55101

SOUTHEAST

ORIGINAL LOCATION OF HOUSE - NEAR THE CORNER
OF PRINCE STREET AND SECOND AVE. SE (#1 ON MAP OF
SUCCESSIVE SITES)

SKETCH MAP (OF DISTRICT) BUILDING #3



ARD GODFREY HOUSE
ST ANTHONY FALLS HISTORIC DISTRICT
MINNEAPOLIS, HENNEPIN CO., MN
010843 # 14

010843-14

ARD Godfrey House

45 ORTMAN ST

ST ANTHONY FALLS HISTORIC DISTRICT

MINNEAPOLIS, MN

BOB FORDER

NOV '90

AV. DEPT., MN HISTORICAL SOCIETY, 690 CEDAR ST., ST PAUL, MN
55101

LOOKING SOUTH (#5 ON MAP OF SUCCESSIVE SITES)

SKETCH MAP (OF DISTRICT) BUILDING #3



ARD GODFREY HOUSE
ST. ANTHONY FALLS HISTORIC DISTRICT
MINNEAPOLIS, HENNEPIN CO., MN
PHOTO: 010073-20

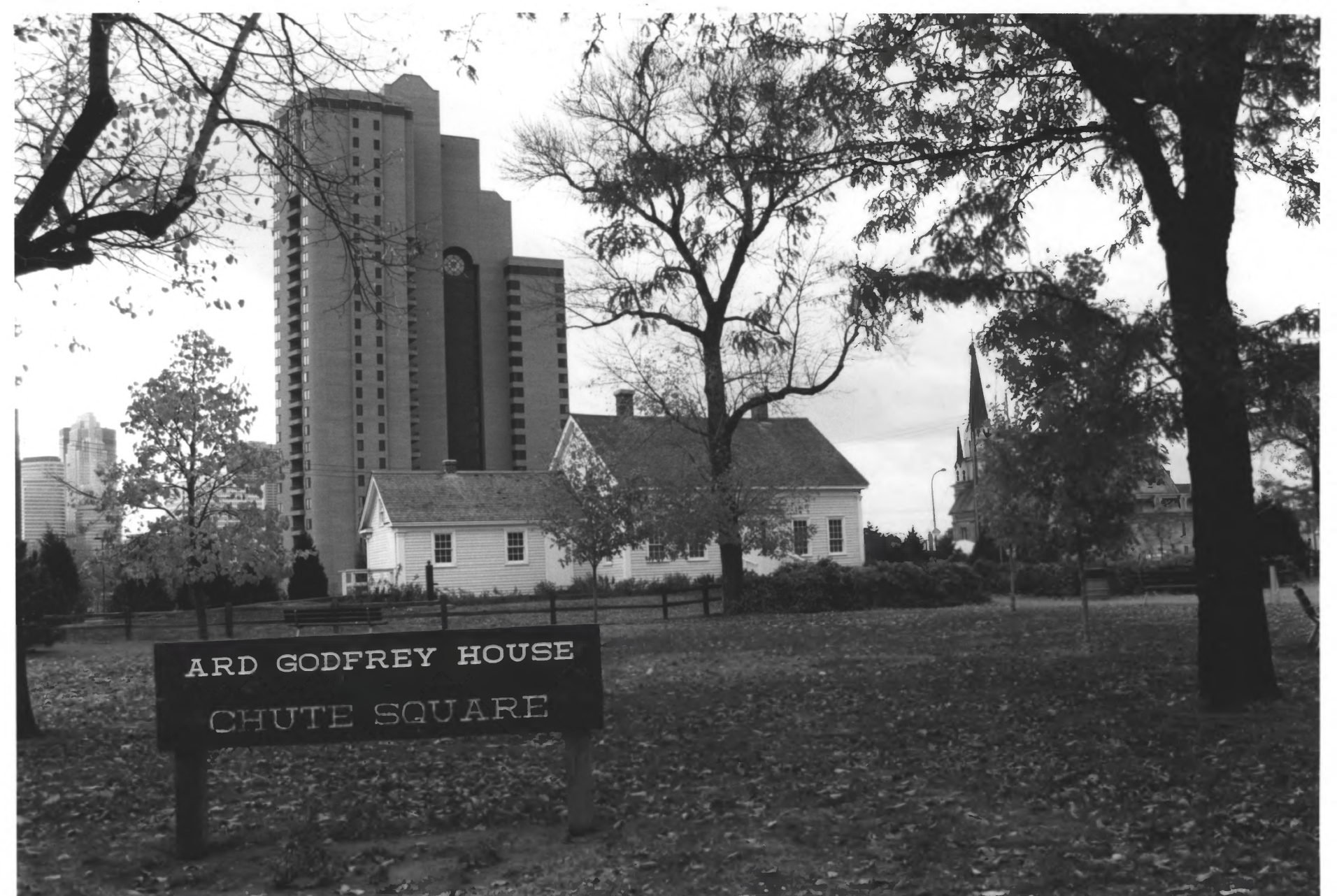
ARD GODFREY HOUSE - ST. ANTHONY FALLS 010073-20
HISTORIC DISTRICT
MINNEAPOLIS, MN.

C.M. KUDZIA

OCT. 1988

A.V. DEPT., MN. HIST. SOC., 690 CEDAR ST.,
ST. PAUL, MN. 55101

LOOKING WEST - (#5 ON MAP OF SUCCESSIVE SITES)
SKETCH MAP (OF DISTRICT) BUILDING #3



ARD GODFREY HOUSE
CHUTE SQUARE

ARD GODFREY HOUSE
ST. ANTHONY FALLS HISTORIC DISTRICT
MINNEAPOLIS, HENNEPIN CO., MN
PHOTO: 010073-21

ARD GODFREY HOUSE - ST. ANTHONY FALLS 010073-21
HISTORIC DISTRICT
MINNEAPOLIS, MN

C. M. KUDZIA

OCT. 1988

A.V. DEPT, MN. HIST. SOC., 690 CEDAR ST.,
ST. PAUL, MN 55101

LOOKING WEST - (#5 ON MAP OF SUCCESSIVE SITES)
SKETCH MAP (OF DISTRICT) BUILDING #3



ARD GODFREY HOUSE
ST. ANTHONY FALLS HISTORIC DISTRICT
MINNEAPOLIS HENNEPIN CO., MINNESOTA
7217

MH5.9
MP3.2h

r51

ARD GODFREY HOUSE
ST. ANTHONY FALLS HISTORIC DISTRICT
MINNEAPOLIS, MINNESOTA

7217

PHOTOGRAPHER UNKNOWN
1915

A.V. DEPT. - MINNESOTA HISTORICAL SOCIETY
690 CEDAR ST., ST. PAUL, MN 55101

FACING SOUTHWEST
HOUSE AT ITS CURRENT LOCATION AT 45 ORTMAN ST.,
IN RICHARD CHUTE SQUARE (#5 ON MAP OF
SUCCESSIVE SITES)

SKETCH MAP (OF DISTRICT) BUILDING #3



ARD GODFREY HOUSE - ST. ANTHONY FALLS HISTORIC DISTRICT
MINNEAPOLIS, HENNEPIN CO., MINNESOTA # 22229

MH5.9
MP3.2h

P37

22227

ARD GODFREY HOUSE
ST. ANTHONY FALLS HISTORIC DISTRICT
MINNEAPOLIS, MINNESOTA
PHOTOGRAPHER UNKNOWN

CA. 1881-1905
A.V. DEPT. - MINNESOTA HISTORICAL SOCIETY
690 CEDAR ST., ST. PAUL, MN 55101

FACING NORTHEAST
109 PRINCE STREET -

THIRD LOCATION
(#3 ON MAP OF SUCCESSIVE SITES)
#3 (ON DISTRICT MAP)

SKETCH MAP BUILDING



MINNEAPOLIS POST OFFICE, MAIN STATION
ST. ANTHONY FALLS HISTORIC DISTRICT
MINNEAPOLIS, HENNEPIN CO., MINNESOTA
PHOTO: 010264-22

MINNEAPOLIS POST OFFICE MAIN STATION ⁰¹⁰²⁶⁴⁻²²
ST. ANTHONY FALLS HISTORIC DISTRICT
MPLS, MN

C.M. KUDZIA

MAY, 1989

A.V. DEPT, MN. HIST. SOC., 690 CEDAR ST.,
ST. PAUL, MN 55101

LOOKING NORTHWEST
SKETCH MAP BUILDING #8



MINNEAPOLIS POST OFFICE, MAIN STATION, PARKING RAMP
ST. ANTHONY FALLS HISTORIC DISTRICT
MINNEAPOLIS, HENNEPIN CO., MINNESOTA
PHOTO: 010055-19

MINNEAPOLIS FORD OFFICE-MAIN STATION

010055-19

ST. ANTHONY FALLS HISTORIC DISTRICT

MINNEAPOLIS, MN

C.M. KUDZIA

OCT., 1988

A.V. DEPT., MN. HIST. SOC., 690 CEDAR ST.,

ST. PAUL, MN 55101

LOOKING NORTHEAST

SKETCH MAP BUILDING #8



MINNEAPOLIS Post office MAIN STATION (VEHICLE MAINTENANCE FACILITY)
ST. ANTHONY FALLS HISTORIC DISTRICT
MINNEAPOLIS, Hennepin CO., MN

010844 # 4

Minneapolis Post office - MAIN STATION (Vehicle
Maintenance Facility)
201 S. 1st ST.

010844-4

ST ANTHONY FALLS HISTORIC DISTRICT

MINNEAPOLIS, MN

BOB FORDER

NOV 90

A.U. DEPT, MN HISTORICAL SOCIETY, 690 CEDAR ST., ST PAUL, MN 55101

LOOKING NORTHEAST
SKETCH MAP BUILDING #8



MINNEAPOLIS POST OFFICE, MAIN STATION
ST. ANTHONY FALLS HISTORIC DISTRICT
MINNEAPOLIS, HENNEPIN CO., MINNESOTA
PHOTO: 010055-17

MINNEAPOLIS POST OFFICE - MAIN STATION
ST. ANTHON FALLS HISTORIC DISTRICT
MINNEAPOLIS, MINNESOTA

010055-17

C. M. KUDZIA

OCT. 1988

A. V. DEPT., MN. HIST. SOC., 690 CEDAR ST,
ST. PAUL, MN 55101

LOOKING EAST

SKETCH MAP BUILDING #8



Minneapolis Post office main station (parking ramp)
St. Anthony Falls Historic District
Minneapolis, Hennepin Co., Minnesota
010844 # 6

MINNEAPOLIS, POST OFFICE MAIN STATION

010844-6

201 S. 1ST ST.

ST ANTHONY FALLS HISTORIC DISTRICT

MINNEAPOLIS, MN

BOB FORDER

NOV., 90

AV DEPT., MN HISTORICAL SOCIETY, 690 CEDAR ST., ST PAUL, MN 55101

LOOKING WEST

SKETCH MAP BUILDING #8



ISLAND SASH AND DOOR FACTORY
ST ANTHONY FALLS HISTORIC DISTRICT
MINNEAPOLIS, HENNEPIN CO., MN
010843 #4

ISLAND SASH and DOOR FACTORY (95 MERRIAM ST)
ST ANTHONY FALLS HISTORIC DISTRICT

010843-4

MINNEAPOLIS, MN

BOB FORDER

NOV, 90

A.V. Dept, MN HISTORICAL SOCIETY, 690 CEDAR ST., ST PAUL, MN 55101

LOOKING S. W.

SKETCH MAP BUILDING #6



Island SASH and DOOR FACTORY
ST ANTHONY FALLS HISTORIC DISTRICT
MINNEAPOLIS, HENNEPIN CO., MN
010843 #3

Island SASH and DOOR FACTORY (95 MERIDIAN ST)

010843-3

ST ANTHONY FALLS HISTORIC DISTRICT

MINNEAPOLIS MN

Bob Forde R

NOV 90

AV Dept., MN HISTORICAL SOCIETY, 690 CEDAR ST., ST PAUL, MN 55101

Looking: West

SKETCH MAP BUILDING #6



Island SASH and DOOR FACTORY
ST ANTHONY FALLS HISTORIC DISTRICT
MINNEAPOLIS, HENNEPIN CO., MN
010843 #1

Island Sash and Door Factory (95 Merriam St)

010843-1

St Anthony Falls Historic District

Minneapolis, MN

Bob Forder

Nov 90

A.V. Dept., MN Historical Society, 690 Cedar St., St Paul, MN 55101

Looking N.E.

SKETCH MAP BUILDING #6



ISLAND SASH & DOOR COMPANY
MINNEAPOLIS, HENNEPIN CO., MN
PHOTO: 010057-4

ISLAND SASH & DOOR COMPANY
MINNEAPOLIS, MN (ST. ANTHONY FALLS HISTORIC DISTRICT)

010057-4

C. M. KUDZIA

OCT. 1988

A.V. DEPT., MN. HIST. SOC., 690 CEDAR ST.,
ST. PAUL, MN 55101

LOOKING NE

SKETCH MAP BUILDING #6



ISLAND SASH & DOOR COMPANY
MINNEAPOLIS, HENNEPIN CO., MINN
PHOTO: 010057-6

ISLAND SASH & DOOR COMPANY 010057-6
MINNEAPOLIS, MN (ST. ANTHONY FALLS HISTORIC DISTRICT)

C. M. KUDZIA

OCT. 1988

A. V. DEPT., MN. HIST. SOC., 690 CEDAR ST.,
ST. PAUL, MN 55101

LOOKING W

SKETCH MAP BUILDING #6



EASTMAN TOWN HOUSES, GARAGES (NON-CONTRIBUTING)
ST. ANTHONY FALLS HISTORIC DISTRICT
MINNEAPOLIS, HENNEPIN CO., MINNESOTA
#010060-19

EASTMAN TOWN HOUSES, GARAGES (non-contrib) 010060 - 19
ST. ANTHONY FALLS HISTORIC DISTRICT
MINNEAPOLIS, MINNESOTA

C.M. KUDZIA

OCT, 1988

A.V. DEPT, MN. HIST. SOC., 690 CEDAR ST.,
ST. PAUL, MN 55101

LOOKING NE
SKETCH MAP BUILDING #4



EASTMAN TOWN HOUSES
ST. ANTHONY FALLS HISTORIC DISTRICT
MINNEAPOLIS, HENNEPIN CO., MINNESOTA
#010843-10

010843-10

EASTMAN TOWNHOUSES

2-16 GROVE ST.

ST ANTHONY FALLS HISTORIC DISTRICT

MINNEAPOLIS, MN

BOB FORDER

NOV., 90

A.U. Dept, MN HISTORICAL SOCIETY, 690 CEDAR ST., ST PAUL, MN 55101

LOOKING S.E.

SKETCH MAP BUILDING #4



EASTMAN TOWN HOUSES
ST. ANTHONY FALLS HISTORIC DISTRICT
MINNEAPOLIS, HENNEPIN CO., MINNESOTA
010060-21

010060-21

EASTMAN TOWN HOUSES
MINNEAPOLIS, MN

C.M. KUDZIA

OCT. 1988

A.V. DEPT., MN HIST. SOC. 690 CEDAR ST.,
ST. PAUL, MN 55101

LOOKING NORTH

SKETCH MAP BUILDING #4



Our Lady of Lourdes church (Catholic)
ST ANTHONY Falls Historic District
Minneapolis, Hennepin Co., MN 010 846 #0

Our Lady of Lourdes Church

010846 - 0

21 S.E. PRINCE ST.

ST ANTHONY FALLS HISTORIC DISTRICT

MINNEAPOLIS, MN

Bob Forder

Nov., 90

AV. DEPT., MN HISTORICAL SOCIETY, 690 CEDAR ST., ST PAUL, MN 55101

Looking N.E.

SKETCH MAP BUILDING #15



OUR LADY OF LOURDES CHURCH (CATHOLIC)
ST ANTHONY FALLS HISTORIC DISTRICT
MINNEAPOLIS, HENNEPIN CO., MN
010846 #1

010846-1

Our Lady of Lourdes Church

21 S.E. Prince St.

St Anthony Falls Historic District

Minneapolis, MN

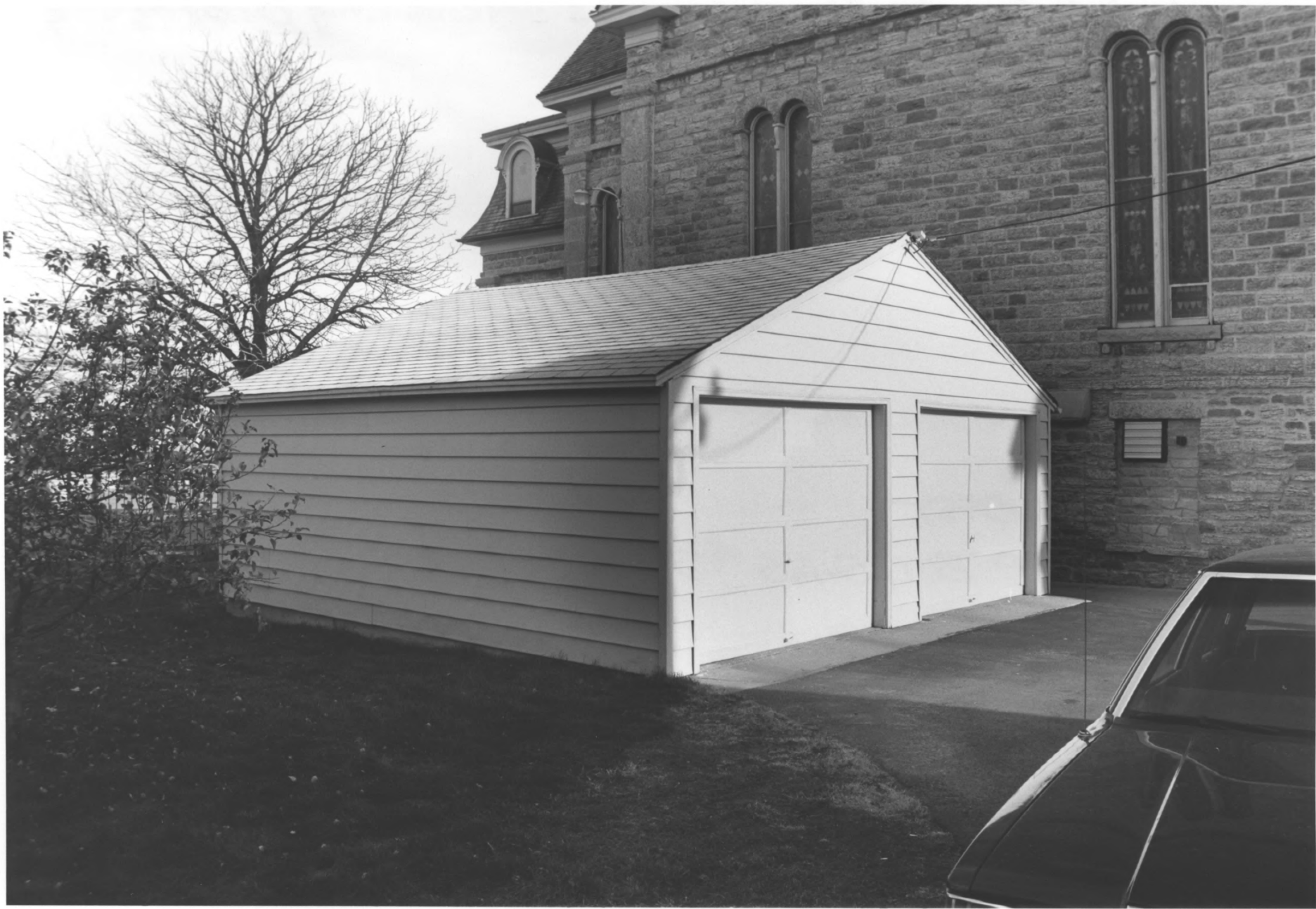
Bob Forder

Nov., 90

Av. Dept., MN Historical Society, 690 Cedar St., St Paul, MN 55101

Looking SE

SKETCH MAP BUILDING #5



Our Lady of Lourdes church (Catholic) (Garage, non-contributing)
St Anthony Falls Historic District
Minneapolis, Hennepin Co., MN 010846 #9

Our Lady of Lourdes Church (GARAGE NON CONTRIBUTING) 010846 - 9

21 S.E. PRINCE ST.

ST ANTHONY FALLS HISTORIC DISTRICT

MINNEAPOLIS, MN

BOB FORDER

NOV., 90

A.U. DEPT., MN HISTORICAL SOCIETY, 690 CEDAR ST., ST PAUL, MN
55101

LOOKING NORTHEAST

SKETCH MAP BUILDING #5



OUR LADY OF LOURDES CHURCH (CATHOLIC)

MINNEAPOLIS, MINNESOTA

PHOTO: 010074-10

OUR LADY OF LOURDES CHURCH (CATHOLIC) 010074-10
ST ANTHONY FALLS Historic District
RECTORY (L) ; CHURCH
MINNEAPOLIS, MN.
C.M. KUDZIA
OCT. 1988
A.V. DEPT., MN. HIST. SOC., 690 CEDAR ST.
ST. PAUL, MN 55101
LOOKING SOUTHEAST
SKETCH MAP BUILDING #15



Our Lady of Lourdes Church (Catholic) Rectory
ST ANTHONY FALLS HISTORIC DISTRICT
MINNEAPOLIS, HENNEPIN CO., MN
010846 #2

Our Lady of Lourdes church (Rectory

010846-2

21 S.E. PRINCE ST.

ST ANTHONY FALLS HISTORIC DISTRICT

MINNEAPOLIS, MN

Bob Fordeiz

NOV., 90

AV. DEPT, MN HISTORICAL SOCIETY, 690 CEDAR ST., ST PAUL, MN 55101

LOOKING NORTH

SKETCH MAP BUILDING #5



Our Lady of Lourdes church (Catholic) (Garage)
ST ANTHONY FALLS HISTORIC DISTRICT
MINNEAPOLIS, HENNEPIN CO., MN 010846 #6

Our Lady of Lourdes church (GARAGE)

010846-6

21 S.E. PRINCE ST.

ST ANTHONY FALLS Historic District

Minneapolis, MN

Bob FORDER

Nov., 90

A.U. Dept., MN HISTORICAL Society, 690 Cedar St., ST PAUL, MN 55101

Looking N.W.

SKETCH MAP BUILDING #15



OUR LADY OF LOURDES CHURCH (CATHOLIC)
ST. ANTHONY FALLS HISTORIC DISTRICT
MINNEAPOLIS, HENNEPIN CO, MINNESOTA
#13494

MH5.9

MP16

P16

photo: B.F. Upton

13494

OUR LADY OF LOURDES CHURCH (CATHOLIC)

ST. ANTHONY FALLS HISTORIC DISTRICT

MINNEAPOLIS, MINNESOTA

PHOTOGRAPHER: B.F. UPTON

1857

A.V. DEPT.- MINNESOTA HISTORICAL SOCIETY
690 CEDAR ST., ST. PAUL, MN 55111

VIEW FROM WINSLOW HOUSE

LOOKING NORTHWEST

SKETCH MAP BUILDING #5



OUR LADY OF LOURDES CHURCH (CATHOLIC)
ST. ANTHONY FALLS HISTORIC DISTRICT
MINNEAPOLIS, HENNEPIN CO., MINNESOTA
53220

MH5.9
MPIC

r4

photo: B.F. Upton

53220

OUR LADY OF LOURDES CHURCH (CATHOLIC)

ST. ANTHONY FALLS HISTORIC DISTRICT

MINNEAPOLIS, MINNESOTA

PHOTOGRAPHER: B.F. UPTON

CA. 1865

A.V. DEPT MINNESOTA HISTORICAL SOCIETY

690 CEDAR ST., ST. PAUL, MN 55101

LOOKING NORTHWEST: VIEW OF UNIVERSALIST CHURCH

SKETCH MAP BUILDING #5

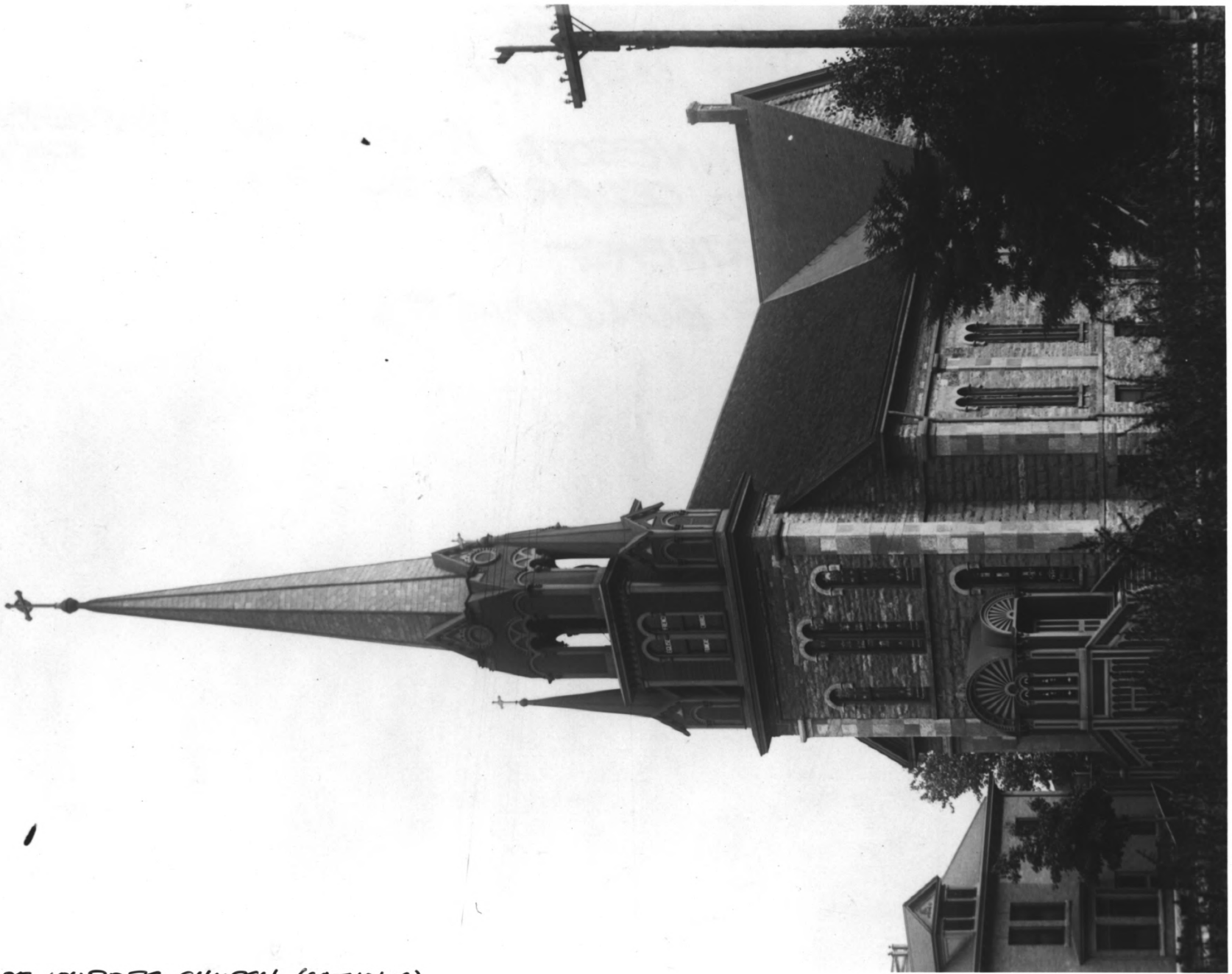
OUR LADY OF LOURDES CHURCH (CATHOLIC)
ST. ANTHONY PARISH HISTORIC DISTRICT
MINNEAPOLIS, HENNINGEN CO., MINNESOTA
#4390-A



MH5.9
MP3.1

r47

OUR LADY OF LOURDES CHURCH (CATHOLIC) 4390-A
ST. ANTHONY FALLS HISTORIC CHURCH
MINNEAPOLIS, MINNESOTA
PHOTOGRAPHER: A. RAYMOND
5 MAY 1936
A.V. DEPT. - MINNESOTA HISTORICAL SOCIETY
690 CEDAR ST., ST. PAUL, MN 55101
LOOKING EAST.
SKETCH MAP BUILDING #5



OUR LADY OF LOURDES CHURCH (CATHOLIC)
ST. ANTHONY FALLS HISTORIC DISTRICT
MINNEAPOLIS, HENNEPIN CO., MINNESOTA
27869

MH5.9
MP5.1

r43

OUR LADY OF LOURDES CHURCH (CATHOLIC) 27869
ST. ANTHONY FALLS HISTORIC DISTRICT
MINNEAPOLIS, MINNESOTA

PHOTOGRAPHER UNKNOWN

CA. 1905

A.V. DEPT. - MINNESOTA HISTORICAL SOCIETY
690 CEDAR ST., ST. PAUL, MN 55101

LOOKING NORTHEAST

SKETCH MAP BUILDING #5

OUR LADY OF LOURDES CHURCH, (CATHOLIC)
MINNEAPOLIS, KENNEDY CO., MN
PHOTO: 010074-8



OUR LADY OF LOURDES CHURCH (CATHOLIC) 010074-8

MINNEAPOLIS, MN.

St ANTHONY Falls Historic District

C.M. KUDZIA

OCT. 1988

A.V. DEPT., MN. HIST. SOC., 690 CEDAR ST.
ST. PAUL, MN 55101

LOOKING EAST
SKETCH MAP BUILDING #5



OUR LADY OF LOURDES CHURCH (CATHOLIC)
ST. ANTHONY FALLS HISTORIC DISTRICT
MINNEAPOLIS, HENNEPIN CO., MINNESOTA
#010843-22

OUR LADY OF LOURDES CHURCH (CATHOLIC)
ST. ANTHONY FALLS HISTORIC DISTRICT
MINNEAPOLIS, MINNESOTA

010843-22

PHOTOGRAPHER: BOB FORDER, HISTORICAL RESEARCH INC.

NOVEMBER 1990

A.V. DEPT. - MINNESOTA HISTORICAL SOCIETY
690 CEDAR ST., ST. PAUL, MN 55101

LOOKING WEST
SKETCH MAP BUILDING #5



OUR LADY OF LOURDES CHURCH (CATHOLIC)
MINNEAPOLIS, HENNEPIN CO., MN
PHOTO: 010074-12

OUR LADY OF LOURDES CHURCH (CATHOLIC) ⁰¹⁰⁰⁷⁴⁻¹²
MINNEAPOLIS, MN ST ANTHONY FALLS HISTORIC DISTRICT

C. M. KUDZIA

OCT. 1988

A. V. DEPT., MN. HIST. SOC., 690 CEDAR ST.,
ST. PAUL, MN 55101

LOOKING WEST
SKETCH MAP BUILDING #5



OUR LADY OF LOURDES CHURCH (CATHOLIC)
ST. ANTHONY FALLS HISTORIC DISTRICT
MINNEAPOLIS, HENNEPIN CO., MINNESOTA
#010846-3

OUR LADY OF LOURDES CHURCH (CATHOLIC)

010846-3

ST. ANTHONY FALLS HISTORIC DISTRICT

MINNEAPOLIS, MINNESOTA

PHOTOGRAPHER: BOB FORDER, HISTORICAL RESEARCH, INC.

NOVEMBER 1990

A.V. DEPT. - MINNESOTA HISTORICAL SOCIETY

690 CEDAR ST., ST. PAUL, MN 55101

LOOKING SOUTHEAST

SKETCH MAP BUILDING #5



OUR LADY OF LOURDES CHURCH (CATHOLIC)
ST. ANTHONY FALLS HISTORIC DISTRICT
MINNEAPOLIS, HENNEPIN CO., MINNESOTA
#010846-4

OUR LADY OF LOURDES CHURCH (CATHOLIC)
ST. ANTHONY FALLS HISTORIC DISTRICT
MINNEAPOLIS, MINNESOTA

010846 - 4

PHOTOGRAPHER: BOB FORDER, HISTORICAL RESEARCH, INC.
NOVEMBER 1990

A.V. DEPT. - MINNESOTA HISTORICAL SOCIETY
690 CEDAR ST., ST. PAUL, MN 55101

LOOKING WEST

SKETCH MAP BUILDING #5

110-8
H.P. 123

St. Lawrence

St. Lawrence
St. Lawrence
St. Lawrence



MH5.9
MPIC

P2

OUR LADY OF LOURDES CHURCH (CATHOLIC)
ST. ANTHONY FALLS HISTORIC DISTRICT

2875-B

MINNEAPOLIS, MINNESOTA
PHOTOGRAPHER UNKNOWN

CA. 1860

A.V. DEPT. - MINNESOTA HISTORICAL SOCIETY
690 CEDAR ST., ST. PAUL, MN

LOOKING SOUTHEAST: VIEW OF UNIVERSALIST CHURCH

SKETCH MAP BUILDING #5



185-186 EAST ISLAND AVENUE
NICOLLET ISLAND HISTORIC RESIDENTIAL DISTRICT
MINNEAPOLIS, HENNEPIN CO., MINNESOTA
010860 #19A/20

185-186 EAST ISLAND AVENUE

010860-19A/20

NICOLLET ISLAND HISTORIC RESIDENTIAL AREA (ST. ANTHONY
MINNEAPOLIS, MINNESOTA FALLS HISTORIC
DISTRICT)

JACKIE SLUSS

DECEMBER 1990

A.V. DEPT. - MINNESOTA HISTORICAL SOCIETY
690 CEDAR ST., ST. PAUL, MN 55101

NORTHWEST

SKETCH MAP AREA #2



95 WEST ISLAND AVENUE
NICOLLET ISLAND HISTORIC RESIDENTIAL DISTRICT
MINNEAPOLIS, HENNEPIN CO., MINNESOTA
010859 #7A/8

95 WEST ISLAND AVENUE

010859 - 7A/8

NICOLLET ISLAND HISTORIC RESIDENTIAL AREA
MINNEAPOLIS, MINNESOTA

(ST. ANTHONY
FALLS HISTORIC
DISTRICT)

JACKIE SLUSS

DECEMBER 1990

A.V. DEPT. - MINNESOTA HISTORICAL SOCIETY

690 CEDAR ST., ST. PAUL, MN 55101

NORTHEAST

SKETCH MAP AREA #2



101 WEST ISLAND AVENUE
NICOLLET ISLAND HISTORIC RESIDENTIAL DISTRICT
MINNEAPOLIS, HENNEPIN CO., MINNESOTA
010 859 #9A/10

101 WEST ISLAND AVENUE (ST ANTHONY FALLS HISTORIC DISTRICT)
NICOLLET ISLAND HISTORIC RESIDENTIAL AREA

010859-9A/10

MINNEAPOLIS, MINNESOTA
JACKIE SLUSS

DECEMBER 1990

A.V. DEPT. - MINNESOTA HISTORICAL SOCIETY

690 CEDAR ST., ST. PAUL, MN 55101

SOUTHEAST

SKETCH MAP AREA #2



105 WEST ISLAND AVENUE
NICOLLET ISLAND HISTORIC RESIDENTIAL DISTRICT
MINNEAPOLIS, HENNEPIN CO., MINNESOTA
010859 #15 A/16

105 WEST ISLAND AVENUE

010859 - 15A/16

NICOLLET ISLAND HISTORIC RESIDENTIAL AREA (ST. ANTHONY
MINNEAPOLIS, MINNESOTA FALLS HISTORIC
DISTRICT)

JACKIE SLUSS

DECEMBER 1990

A.V. DEPT. - MINNESOTA HISTORICAL SOCIETY
690 CEDAR ST., ST. PAUL, MN 5510

NORTHEAST

SKETCH MAP AREA #2



111-113 WEST ISLAND AVENUE
NICOLLET ISLAND HISTORIC RESIDENTIAL DISTRICT
MINNEAPOLIS, HENNEPIN CO., MINNESOTA
010859 #22A/23

111-13 WEST ISLAND AVENUE

010859-22A/23

NICOLLET ISLAND HISTORIC RESIDENTIAL AREA (ST. ANTHONY
MINNEAPOLIS, MINNESOTA FALLS HISTORIC
DISTRICT)

JACKIE SLUSS

DECEMBER 1990

A.V. DEPT. - MINNESOTA HISTORICAL SOCIETY
690 CEDAR ST., ST. PAUL, MN 55101

NORTHEAST

SKETCH MAP AREA #2



107-107 WEST ISLAND AVENUE
NICOLLET ISLAND HISTORIC RESIDENTIAL DISTRICT
MINNEAPOLIS, HENNEPIN CO.; MINNESOTA
010859 #18A/19

107-09 WEST ISLAND AVENUE
NICOLLET ISLAND HISTORIC RESIDENTIAL AREA (ST. ANTHONY
MINNEAPOLIS, MINNESOTA FALLS HISTORIC
DISTRICT)

JACKIE SLUSS

DECEMBER 1990
A.V. DEPT. - MINNESOTA HISTORICAL SOCIETY
690 CEDAR ST., ST. PAUL, MN 55101

NORTHEAST
SKETCH MAP AREA #2



115 WEST ISLAND AVENUE
NICOLLET ISLAND HISTORIC RESIDENTIAL AREA
MINNEAPOLIS, HENNEPIN CO., MN NO PHOTO #

115 West Island Avenue

115 West Island Avenue
Kolklet Island Historic Residential Area

(ST. ANTHONY FALLS
HISTORIC DISTRICT)

Minneapolis, MN

Scott Anfinson

May, 1991

SHPO, Minnesota Historical Society, Ft Snelling History Center
ST PAUL, MN 55111

Looking South

NO PHOTO #

SKETCH MAP AREA #2



115 WEST ISLAND AVENUE
NICOLLET ISLAND RESIDENTIAL AREA
MINNEAPOLIS, HENNEPIN CO., MINNESOTA

011018 #6a

115 WEST ISLAND AVENUE (NON-CONTRIBUTING) 011018-6a
Nicollet Island Residential Area (ST. ANTHONY FALLS
HISTORIC DISTRICT)

MINNEAPOLIS, MN

SCOTT ANFINSON

AUGUST 1991

A. U. Dept, MN HISTORICAL SOC. 690 Cedar St., ST PAUL, MN
55101

LOOKING EAST

SKETCH MAP AREA #2



WEST ISLAND AVENUE - STREETSCAPE
NICOLLET ISLAND HISTORIC RESIDENTIAL DISTRICT
MINNEAPOLIS, HENNEPIN CO., MINNESOTA

010851 #14/14A

WEST ISLAND AVENUE-STREETScape

010851 - 14/19A

NICOLLET ISLAND HISTORIC RESIDENTIAL AREA

(ST. ANTHONY
FALLS HISTORIC
DISTRICT)

MINNEAPOLIS, MINNESOTA

JACKIE SLUSS

DECEMBER 1990

A.V. DEPT. - MINNESOTA HISTORICAL SOCIETY

690 CEDAR ST., ST. PAUL, MN 55101

SOUTHEAST

SKETCH MAP AREA #2



WEST ISLAND AVENUE. STREETSCAPE
NICOLLET ISLAND HISTORIC RESIDENTIAL DISTRICT
MINNEAPOLIS, HENNEPIN CO., MINNESOTA
010859 #14A /15

WEST ISLAND AVENUE STREETScape

010859 - 14A/15

NICOLLET ISLAND HISTORIC RESIDENTIAL AREA

(ST. ANTHONY
FALLS HISTORIC
DISTRICT)

MINNEAPOLIS, MINNESOTA

JACKIE SLUSS

DECEMBER 1990

A.V. DEPT. - MINNESOTA HISTORICAL SOCIETY

690 CEDAR ST., ST. PAUL, MN 55101

NORTHEAST

SKETCH MAP AREA #2



WEST ISLAND AVENUE - STREETSCAPE
NICOLLET ISLAND HISTORIC RESIDENTIAL DISTRICT
MINNEAPOLIS, HENNEPIN CO., MINNESOTA
010851 #17/17A

WEST ISLAND AVENUE - STREETScape 010851-17/17A
NICOLLET ISLAND HISTORIC RESIDENTIAL AREA (ST. ANTHONY
MINNEAPOLIS, MINNESOTA FALLS HISTORIC
DISTRICT)

JACKIE SLUSS

DECEMBER 1990

A.V. DEPT. - MINNESOTA HISTORICAL SOCIETY
690 CEDAR ST, ST. PAUL, MN 55101

SOUTH+ SOUTH WEST

SKETCH MAP AREA #2



WEST ISLAND AVENUE
NICOLLET ISLAND HISTORIC RESIDENTIAL DISTRICT
MINNEAPOLIS, HENNEPIN CO., MINNESOTA
010851 #18/18A

WEST ISLAND AVENUE -

010851-18/18A

NICOLLET ISLAND RESIDENTIAL HISTORIC AREA

(ST. ANTHONY
FALLS HISTORIC
DISTRICT)

MINNEAPOLIS, MINNESOTA

JACKIE SLUSS

DECEMBER 1990

A.V. DEPT. - MINNESOTA HISTORICAL SOCIETY

690 CEDAR ST., ST. PAUL, MN 55101

EAST

SKETCH MAP AREA #2



167 EAST ISLAND AVENUE
NICOLLET ISLAND HISTORIC RESIDENTIAL DISTRICT
MINNEAPOLIS, HENNEPIN CO., MINNESOTA
010850 #16A

167 EAST ISLAND AVENUE

NICOLLET ISLAND HISTORIC RESIDENTIAL AREA-

MINNEAPOLIS, MINNESOTA

JACKIE SLVSS

DECEMBER 1990

A.V. DEPT. - MINNESOTA HISTORICAL SOCIETY

610 CEDAR ST, ST. PAUL, MN 55101

DETAIL - SOUTH

SKETCH MAP AREA #2

010856 - 16A

(ST. ANTHONY
FALLS HISTORIC
DISTRICT)



1163 EAST ISLAND AVENUE
NICOLLET ISLAND HISTORIC RESIDENTIAL DISTRICT
MINNEAPOLIS, HENNEPIN CO., MINNESOTA
010856 #20A

163 EAST ISLAND AVENUE

010856-20A

NICOLLET ISLAND HISTORIC RESIDENTIAL AREA - (ST. ANTHONY
MINNEAPOLIS, MINNESOTA (FALLS HISTORIC
DISTRICT))

JACKIE SLUSS

DECEMBER, 1990

A.V. DEPT. - MINNESOTA HISTORICAL SOCIETY

690 CEDAR ST, ST. PAUL, MN 55107

WEST-NORTHWEST

SKETCH MAP AREA #2



171 EAST ISLAND AVENUE
NICOLLET ISLAND HISTORIC RESIDENTIAL DISTRICT
MINNEAPOLIS, HENNEPIN CO., MINNESOTA
010856 #4A

171 EAST ISLAND AVENUE

010856-4A

NICOLLET ISLAND HISTORIC RESIDENTIAL AREA - (ST. ANTHONY
MINNEAPOLIS, MINNESOTA FALLS HISTORIC
DISTRICT)

JACKIE SLUSS

DECEMBER 1990

A.V. DEPT. - MINNESOTA HISTORICAL SOCIETY
690 CEDAR ST., ST. PAUL, MN 55101

~~NORTHWEST~~

SKETCH MAP AREA #2



167 EAST ISLAND AVENUE
NICOLLET ISLAND HISTORIC RESIDENTIAL DISTRICT
MINNEAPOLIS, HENNEPIN CO., MINNESOTA
010856 #7A

167 EAST ISLAND AVENUE
NICOLLET ISLAND HISTORIC RESIDENTIAL AREA - (ST. ANTHONY
MINNEAPOLIS, MINNESOTA FALLS HISTORIC
DISTRICT)

010856-7A

JACKIE SLUSS

DECEMBER 1990

A.V. DEPT. - MINNESOTA HISTORICAL SOCIETY

690 CEDAR ST., ST. PAUL, MN 55101

SOUTHWEST

SKETCH MAP AREA #2



PAQUETTE
CONSTRUCTION
GENERAL CONTRACTOR
823-2584
L.C. 3796

175 EAST ISLAND AVENUE
NICOLLET ISLAND HISTORIC RESIDENTIAL DISTRICT
MINNEAPOLIS, HENNEPIN CO., MINNESOTA
010860 #24A

175 EAST ISLAND AVENUE
NICOLLET ISLAND HISTORIC RESIDENTIAL AREA - (ST. ANTHONY
MINNEAPOLIS, MINNESOTA FALLS HISTORIC
DISTRICT)

010860-24A

JACKIE SLUSS

DECEMBER 1990

A.V. DEPT. - MINNESOTA HISTORICAL SOCIETY
690 CEDAR ST., ST. PAUL, MN 55101

NORTHWEST

SKETCH MAP AREA #2



183-184 EAST ISLAND AVENUE
NICOLLET ISLAND HISTORIC RESIDENTIAL DISTRICT
MINNEAPOLIS, HENNEPIN CO., MINNESOTA
010 860 #14A/15

183-84 EAST ISLAND AVENUE

010860-14A/15

NICOLLET ISLAND HISTORIC RESIDENTIAL AREA - (ST. ANTHONY
FALLS HISTORIC
DISTRICT)

MINNEAPOLIS, MINNESOTA

JACKIE SLUSS

DECEMBER 1990

A.V. DEPT. - MINNESOTA HISTORICAL SOCIETY
690 CEDAR ST., ST. PAUL, MN 55101

WEST

SKETCH MAP AREA #2



187-190 EAST ISLAND AVENUE
NICOLLET ISLAND HISTORIC RESIDENTIAL DISTRICT
MINNEAPOLIS, HENNEPIN CO., MINNESOTA
010 860 #10A / 11

187-90 EAST ISLAND AVENUE

010860-10A/11

NICOLLET ISLAND HISTORIC RESIDENTIAL AREA - (ST. ANTHONY
MINNEAPOLIS, MINNESOTA FALLS HISTORIC
DISTRICT)

JACKIE SLUSS

DECEMBER 1990

A.V. DEPT. - MINNESOTA HISTORICAL SOCIETY
690 CEDAR ST., ST. PAUL, MN 55101

WEST

SKETCH MAP AREA #2



EAST ISLAND AVENUE
NICOLLET ISLAND HISTORIC RESIDENTIAL DISTRICT
MINNEAPOLIS, HENNEPIN CO., MINNESOTA
OLD SET 11/27/61

EAST ISLAND AVENUE
NICOLLET ISLAND HISTORIC RESIDENTIAL AREA - (ST. ANTHONY
MINNEAPOLIS, MINNESOTA FALLS HISTORIC
DISTRICT)

010851-22/22A

JACKIE SLUSS

DECEMBER 1990

A.V. DEPT. - MINNESOTA HISTORICAL SOCIETY
690 CEDAR ST., ST. PAUL, MN 55101

WEST SOUTH WEST

SKETCH MAP AREA #2



EAST ISLAND AVENUE. STREETSCAPE
NICOLLET ISLAND HISTORIC RESIDENTIAL DISTRICT
MINNEAPOLIS, HENNEPIN CO., MINNESOTA
010860 #8A/9

EAST ISLAND AVENUE - STREETSCAPE

010860 - 8A/9

NICOLLET ISLAND HISTORIC RESIDENTIAL AREA - (ST. ANTHONY
MINNEAPOLIS, MINNESOTA FALLS HISTORIC
DISTRICT)

JACKIE SLUSS

DECEMBER 1990

A.V. DEPT. - MINNESOTA HISTORICAL SOCIETY

690 CEDAR ST., ST. PAUL, MN 55101

WEST NORTHWEST

SKETCH MAP AREA #2



15-17 MAPLE PLACE
NICOLLET ISLAND HISTORIC RESIDENTIAL DISTRICT
MINNEAPOLIS, HENNEPIN CO., MINNESOTA
010859 #4A/5

15-17 MAPLE PLACE
NICOLLET ISLAND HISTORIC RESIDENTIAL AREA - (ST. ANTHONY
MINNEAPOLIS, MINNESOTA FALLS HISTORIC
DISTRICT)

010859-4A/5

JACKIE SLUSS

DECEMBER 1990

A.V. DEPT. - MINNESOTA HISTORICAL SOCIETY
690 CEDAR ST., ST. PAUL, MN 55101

SOUTHEAST

SKETCH MAP AREA #2



15-17 MAPLE PLACE
NICOLLET ISLAND HISTORIC RESIDENTIAL DISTRICT
MINNEAPOLIS, HENNEPIN CO., MINNESOTA
010859 #3A/A

15-17 MAPLE PLACE

010859 - 3A/4

NICOLLET ISLAND HISTORIC RESIDENTIAL AREA (ST. ANTHONY
MINNEAPOLIS, MINNESOTA FALLS HISTORIC
DISTRICT)

JACKIE SLUSS

DECEMBER 1990

A.V. DEPT. - MINNESOTA HISTORICAL SOCIETY
690 CEDAR ST., ST. PAUL, MN 55101

SOUTHWEST
SKETCH MAP AREA #2



27 MAPLE PLACE
NICOLLET ISLAND HISTORIC RESIDENTIAL DISTRICT
MINNEAPOLIS, HENNEPIN CO., MINNESOTA
010 856 # 24 A

27 MAPLE PLACE

010856-24A

NICOLLET ISLAND HISTORIC RESIDENTIAL AREA - (ST. ANTHONY
MINNEAPOLIS, MINNESOTA FALLS HISTORIC
DISTRICT)

JACKIE SLUSS

DECEMBER 1990

A.V. DEPT. - MINNESOTA HISTORICAL SOCIETY

690 CEDAR ST., ST. PAUL, MN 55101

SOUTHEAST

SKETCH MAP AREA #2



18-20 MAPLE PLACE
NICOLLET ISLAND HISTORIC RESIDENTIAL DISTRICT
MINNEAPOLIS, HENNEPIN CO, MINNESOTA
010 858 #2A/2A A

18-20 MAPLE PLACE

010858 - 29/29A

NICOLLET ISLAND HISTORIC RESIDENTIAL AREA - (ST. ANTHONY
MINNEAPOLIS, MINNESOTA (FALLS HISTORIC
DISTRICT))

JACKIE SLUSS

DECEMBER 1990

A.V. DEPT. - MINNESOTA HISTORICAL SOCIETY

690 CEDAR ST., ST. PAUL, MN 55101

NORTH
SKETCH MAP AREA #2



MAPLE STREET- STREETSCAPE
NICOLLET ISLAND HISTORIC RESIDENTIAL DISTRICT
MINNEAPOLIS, HENNEPIN CO., MINNESOTA
010856 #22A

MAPLE STREET-STREETSCAPE

010856-22A

NICOLLET ISLAND HISTORIC RESIDENTIAL AREA - (ST. ANTHONY
MINNEAPOLIS, MINNESOTA FALLS HISTORIC
DISTRICT)

JACKIE SLUSS

DECEMBER 1990

AV. DEPT. - MINNESOTA HISTORICAL SOCIETY

690 CEDAR ST., ST. PAUL, MN 55101

SOUTHEAST

SKETCH MAP AREA #2



91 NICOLLET STREET
NICOLLET ISLAND HISTORIC RESIDENTIAL DISTRICT
MINNEAPOLIS, HENNEPIN CO., MINNESOTA
010 858 #15/15A

91 NICOLLET STREET

010858 - 15/15A

NICOLLET ISLAND HISTORIC RESIDENTIAL AREA - (ST. ANTHONY

MINNEAPOLIS, MINNESOTA

FALLS HISTORIC
DISTRICT)

JACKIE SLUSS

DECEMBER 1990

A.V. DEPT. - MINNESOTA HISTORICAL SOCIETY

690 CEDAR ST., ST. PAUL, MN 55101

NORTHWEST

SKETCH MAP AREA #2



97 NICOLLET STREET
NICOLLET ISLAND HISTORIC RESIDENTIAL DISTRICT
MINNEAPOLIS, HENNEPIN CO., MINNESOTA
010858 # 19/19A NON-CONTRIBUTING

97 NICOLLET STREET

010858 - 19/19A

NICOLLET ISLAND HISTORIC RESIDENTIAL AREA - (ST. ANTHONY
MINNESOTA, MINNESOTA FALLS HISTORIC
DISTRICT)

JACKIE SLUSS

DECEMBER 1990

A.V. DEPT. - MINNESOTA HISTORICAL SOCIETY

690 CEDAR ST., ST. PAUL, MN 55101

SOUTHWEST

NON-CONTRIBUTING

SKETCH MAP AREA #2



93 NICOLLET STREET
NICOLLET ISLAND HISTORIC RESIDENTIAL DISTRICT
MINNEAPOLIS, HENNEPIN CO., MINNESOTA
010858 #17/17A

93 NICOLLET STREET

010858-17/17A

NICOLLET ISLAND HISTORIC RESIDENTIAL AREA (ST. ANTHONY
MINNEAPOLIS, MINNESOTA FALLS HISTORIC
DISTRICT)

JACKIE SLUSS

DECEMBER 1990

A.V. DEPT. - MINNESOTA HISTORICAL SOCIETY
690 CEDAR ST., ST. PAUL, MN 55101

SOUTHWEST

SKETCH MAP AREA #2



103 NICOLLET STREET
NICOLLET ISLAND HISTORIC RESIDENTIAL DISTRICT
MINNEAPOLIS, HENNEPIN CO., MINNESOTA
010858 #4/4A

163 NICOLLET STREET

0 10858 - 4/4A

NICOLLET ISLAND HISTORIC RESIDENTIAL AREA

(ST. ANTHONY
FALLS HISTORIC
DISTRICT)

MINNEAPOLIS, MINNESOTA

JACKIE SUSS

DECEMBER 1990

AV. DEPT. - MINNESOTA HISTORICAL SOCIETY

690 CEDAR ST., ST. PAUL, MN 55101

NORHEAST

SKETCH MAP AREA #2



163 NICOLLET STREET- SHED
NICOLLET ISLAND HISTORIC RESIDENTIAL DISTRICT
MINNEAPOLIS, HENNEPIN CO, MINNESOTA
010 858 #6/6A NON-CONTRIBUTING

163 NICOLLET STREET - SHED 010858 - 6/6A
NICOLLET ISLAND HISTORIC RESIDENTIAL AREA (ST. ANTHONY
MINNEAPOLIS, MINNESOTA FALLS HISTORIC
DISTRICT)

JACKIE SLUSS
DECEMBER 1990

A.V. DEPT. - MINNESOTA HISTORICAL SOCIETY
690 CEDAR ST., ST. PAUL, MN 55101

SOUTH

NON-CONTRIBUTING

SKETCH MAP AREA #2



167-169 NICOLLET STREET
NICOLLET ISLAND HISTORIC RESIDENTIAL DISTRICT
MINNEAPOLIS, HENNEPIN CO., MINNESOTA
010858 #10 /10A

167-69 NICOLLET STREET

010858 - 10/10A

NICOLLET ISLAND HISTORIC RESIDENTIAL AREA - (ST. ANTHONY
MINNEAPOLIS, MINNESOTA FALLS HISTORIC
DISTRICT)

JACKIE SLUSS

DECEMBER 1990

A.V. DEPT. - MINNESOTA HISTORICAL SOCIETY
690 CEDAR ST., ST. PAUL, MN 55101

NORTHEAST

SKETCH MAP AREA #2



167-169 NICOLLET STREET
NICOLLET ISLAND HISTORIC RESIDENTIAL DISTRICT
MINNEAPOLIS, HENNEPIN CO., MINNESOTA
010858 # 7/7A

167-69 NICOLLET STREET

010858 - 7/7A

NICOLLET ISLAND HISTORIC RESIDENTIAL AREA (ST. ANTHONY
MINNEAPOLIS, MINNESOTA FALLS HISTORIC
DISTRICT)

JACKIE SLUSS

DECEMBER 1990

A.V. DEPT. - MINNESOTA HISTORICAL SOCIETY
690 CEDAR ST., ST. PAUL, MN 55101

SOUTHEAST

SKETCH MAP AREA #2



NICOLLET STREET- STREET SCAPE
NICOLLET ISLAND HISTORIC RESIDENTIAL DISTRICT
MINNEAPOLIS, HENNEPIN CO., MINNESOTA
010856 #23A

NICOLLET STREET - STREET SCAPE

010856 - 23A

NICOLLET ISLAND HISTORIC RESIDENTIAL AREA - (ST. ANTHONY
MINNEAPOLIS, MINNESOTA FALLS HISTORIC
DISTRICT)

JACKIE SLUSS

DECEMBER 1990

A.V. DEPT. - MINNESOTA HISTORICAL SOCIETY
690 CEDAR ST., ST. PAUL, MN 55105

SOUTHEAST

SKETCH MAP AREA #2



177 NICOLLET STREET
NICOLLET ISLAND HISTORIC RESIDENTIAL DISTRICT
MINNEAPOLIS, HENNEPIN CO., MINNESOTA
010858 #11/11A

177 NICOLLET STREET

010858 - 11/11A

NICOLLET ISLAND HISTORIC RESIDENTIAL AREA - (ST. ANTHONY
FALLS HISTORIC DISTRICT)

MINNEAPOLIS, MINNESOTA

JACKIE SLUSS

DECEMBER 1990

A.V. DEPT. - MINNESOTA HISTORICAL SOCIETY

690 CEDAR ST., ST. PAUL, MN 55101

SOUTHEAST

SKETCH MAP AREA #2



NORTHEAST END OF ISLAND
NICOLLET ISLAND HISTORIC RESIDENTIAL DISTRICT
MINNEAPOLIS, HENNEPIN CO., MINNESOTA
610860 #4A/5

NORTHEAST END OF ISLAND

010860-4A/5

NICOLLET ISLAND HISTORIC RESIDENTIAL AREA - (ST. ANTHONY

MINNEAPOLIS, MINNESOTA

FALLS HISTORIC
DISTRICT)

JACKIE SLUSS

DECEMBER 1990

A.V. DEPT. - MINNESOTA HISTORICAL SOCIETY

690 CEDAR ST., ST. PAUL, MN 55101

NORTH

SKETCH MAP AREA #2



NORTH END OF ISLAND
NICOLLET ISLAND HISTORIC RESIDENTIAL DISTRICT
MINNEAPOLIS, HENNEPIN CO., MINNESOTA
010851 #20/20A

NORTH END OF ISLAND - STREETSCAPE

© 10851-20/20A

NICOLLET ISLAND HISTORIC RESIDENTIAL AREA - (ST. ANTHONY
MINNEAPOLIS, MINNESOTA (FALLS HISTORIC
DISTRICT))

JACKIE SLUSS

DECEMBER 1990

A. V. DEPT. - MINNESOTA HISTORICAL SOCIETY

690 CEDAR ST., ST. PAUL, MN 55101

SOUTH

SKETCH MAP AREA #2

Gateway Residential Area
St. Anthony Falls Historic District
Minneapolis, Hennepin Co., MN
MHS Archaeology Dept Photo



GATEWAY RESIDENTIAL AREA WRP 1986 Roll 7 #6
ST. ANTHONY FALLS HISTORIC DISTRICT
MINNEAPOLIS, MINNESOTA
ROBERT CLOUSE

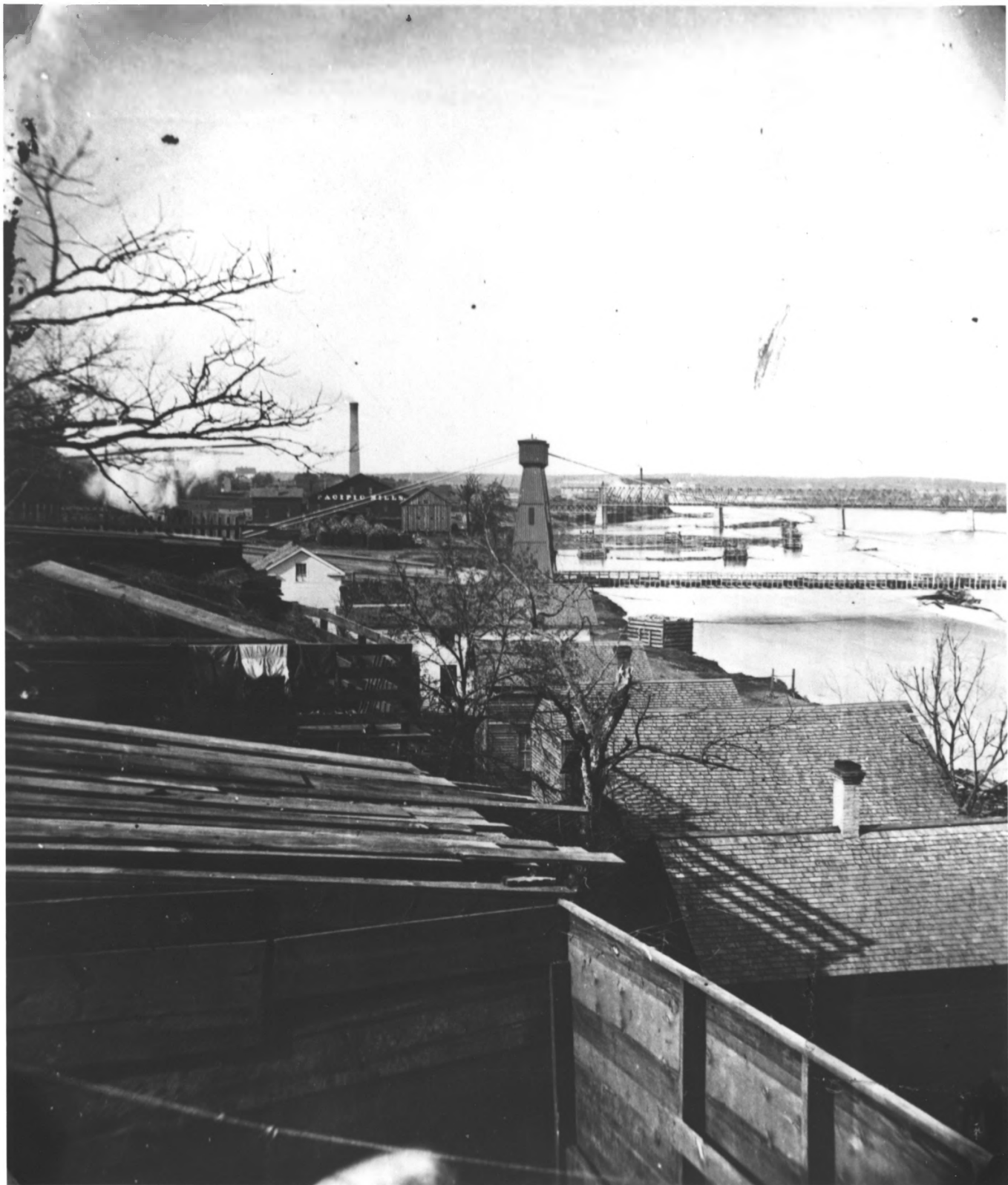
1986

MINNESOTA HISTORICAL SOCIETY
ARCHAEOLOGY DEPARTMENT
FORT SNEILING HISTORY CENTER, ST. PAUL, MN 55111

livery stable excavations at the south end of the Gateway Residential

Area in 1986.

SKETCH MAP SITE #13



GATEWAY RESIDENTIAL AREA
ST. ANTHONY FALLS HISTORIC DISTRICT
MINNEAPOLIS, HENNEPIN CO., MINNESOTA
#40068

MH5.9
MP4.21
P16

40068

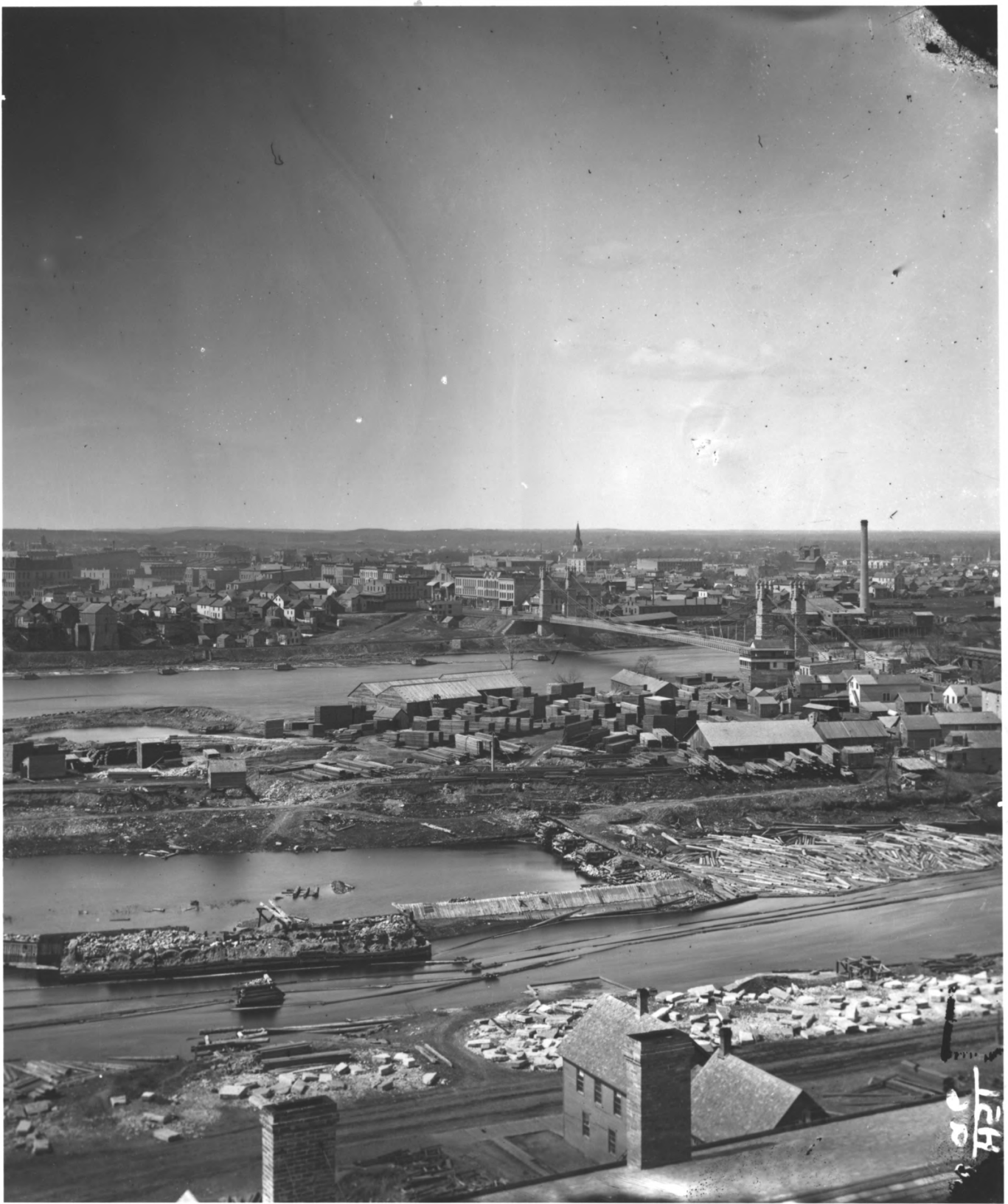
GATEWAY RESIDENTIAL AREA
ST. ANTHONY FALLS HISTORIC DISTRICT
MINNEAPOLIS, MINNESOTA
PHOTOGRAPHER UNKNOWN

LATE 1860s

AN. DEPT. - MINNESOTA HISTORICAL SOCIETY
690 CEDAR ST., ST. PAUL, MN 55101

LOOKING NORTHWEST, THE JOHN STEVENS HOUSE IS
THE WHITE HOUSE IN THE LEFT CENTER.

SKETCH MAP SITE #13



GATEWAY RESIDENTIAL AREA
ST. ANTHONY FALLS HISTORIC DISTRICT
MINNEAPOLIS, HENNEPIN CO., MINNESOTA
#6600-A9

MH5.9
MP1d
r20

GATEWAY RESIDENTIAL AREA
ST. ANTHONY FALLS HISTORIC DISTRICT
MINNEAPOLIS, MINNESOTA

6600-A9

PHOTOGRAPHER: JACOBY
1878

A.V. DEPT. - MINNESOTA HISTORICAL SOCIETY
690 CEDAR ST., ST. PAUL, MN 55101

LOOKING WEST. THE GATEWAY RESIDENTIAL AREA
IS IN THE LEFT CENTER.

SKETCH MAP SITE #13



Chicago St. Paul, Minneapolis and Omaha RR Roundhouse
St. Anthony Falls Historic District
Minneapolis, Hennepin County, MN
MHS Archaeology Dept. Photo

WRP 1986 Roll 4 #3a-4
CHICAGO, ST. PAUL, MINNEAPOLIS, AND OMAHA RAILROAD ROUNDHOUSE
ST. ANTHONY FALLS HISTORIC DISTRICT
MINNEAPOLIS, MINNESOTA
ROBERT CLOUSE

1986
MINNESOTA HISTORICAL SOCIETY - ARCHAEOLOGY DEPARTMENT
FORT SNELLING HISTORY CENTER, ST. PAUL, MN 55111

LOOKING SOUTHWEST AT AN EXCAVATED BAY
SKETCH MAP SITE #9



Chicago, St. Paul, Minneapolis and Omaha RR Roundhouse
St. Anthony Falls Historic District
Minneapolis, Hennepin Co., MN
MHS Archaeology Dept. Photo

WRP 1986 Roll 4 #5a-6
CHICAGO, ST. PAUL, MINNEAPOLIS, AND OMAHA RAILROAD ROUNDHOUSE
ST. ANTHONY FALLS HISTORIC DISTRICT
MINNEAPOLIS, MINNESOTA
ROBERT CLOUSE
1986

MINNESOTA HISTORICAL SOCIETY - ARCHAEOLOGY DEPARTMENT
FORT SNELLING HISTORY CENTER, ST. PAUL, MN 55111

LOOKING WEST AT THE C, SP, M AND O RAILROUND
ROUNDHOUSE SITE EXCAVATION.
SKETCH MAP SITE #9

Pacific Sawmill
St. Anthony Falls Historic District
Minneapolis, Hennepin Co., MN
MHS Archaeology Dept. Photo



PACIFIC SAWMILL
ST. ANTHONY FALLS HISTORIC DISTRICT
MINNEAPOLIS, MINNESOTA

WRP 1986 Roll 2 #1a-2

ROBERT CLOUSE

1986

MINNESOTA HISTORICAL SOCIETY - ARCHAEOLOGY DEPT.
FORT SNELLING HISTORY CENTER, ST. PAUL, MN 55111

Looking south at excavation in 1986; southeast building foundation
and log slide.

SKETCH MAP SITE #11



HENNEPIN AVENUE BRIDGES
ST. ANTHONY FALLS HISTORIC DISTRICT
MINNEAPOLIS, HENNEPIN CO., MINNESOTA
#40063

MH5.9
MP8

r166

HENNEPIN AVENUE BRIDGES
ST. ANTHONY FALLS HISTORIC DISTRICT

40063

MINNEAPOLIS, MINNESOTA

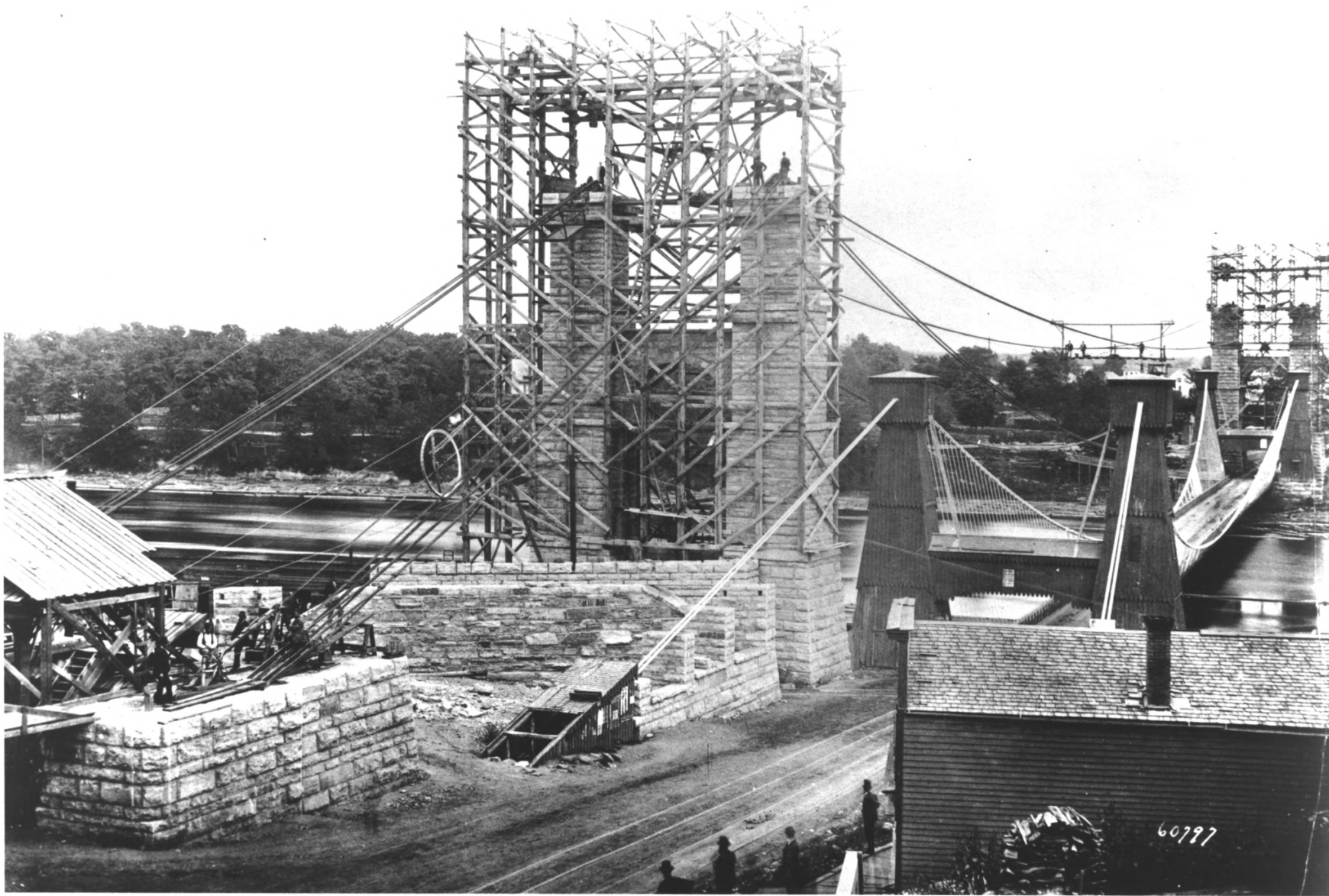
PHOTOGRAPHER: UNKNOWN

1891

A.V. DEPT. - MINNESOTA HISTORICAL SOCIETY

690 CEDAR ST., ST. PAUL, MN 55101

WEST HALF OF THE 1888-91 HENNEPIN AVENUE BRIDGE
SKETCH MAP SITE #12



60797

HENNEPIN AVENUE BRIDGES
ST. ANTHONY FALLS HISTORIC DISTRICT
MINNEAPOLIS, HENNEPIN CO., MINNESOTA
#12769

HENNEPIN AVENUE BRIDGES

12769

ST. ANTHONY FALLS HISTORIC DISTRICT

MINNEAPOLIS, MINNESOTA

PHOTOGRAPHER: UNKNOWN

1876

A.V. DEPT.- MINNESOTA HISTORICAL SOCIETY

690 CEDAR ST., ST. PAUL, MN 55101

LOOKING NORTH AT 1854 (RIGHT) AND 1876 HENNEPIN
AVENUE BRIDGE.

SKETCH MAP SITE #12



Hennepin Avenue Bridges
St. Anthony Falls Historic District
Minneapolis, Hennepin Co., MN
MHS Archaeology Dept. Photo

HENNEPIN AVENUE BRIDGES HAB R.113 #17-17a

ST. ANTHONY FALLS HISTORIC DISTRICT
MINNEAPOLIS, MINNESOTA

PHOTOGRAPHER: ROBERT CLOUSE
1985

MHS ARCHAEOLOGY DEPT.: FORT SNELLING HISTORY CENTER, ST. PAUL, MN 55111
West side tower base excavations of 1876 bridge. 1985 excavations.

SKETCH MAP SITE #12

Hennepin Avenue Bridges
St. Anthony Falls Historic District
Minneapolis, Hennepin Co., MN
MHS Archaeology Dept. Photo



HENNEPIN AVENUE BRIDGES
ST. ANTHONY FALLS HISTORIC DISTRICT

HAD Roll 9 #18a-19

MINNEAPOLIS, MINNESOTA

PHOTOGRAPHER: ROBERT CLOUSE

1985
MINNESOTA HISTORICAL SOCIETY-ARCHAEOLOGY DEPARTMENT
FORT SNELLING HISTORY CENTER, ST. PAUL, MN 55111

West side tower base excavation of 1854 bridge. 1985 excavations.

SKETCH MAP SITE #12

Hennepin Avenue Bridges
St. Anthony Falls Historic District
Minneapolis, Hennepin Co., MN
MHS Archaeology Dept. Photo



HENNEPIN AVENUE BRIDGES
ST. ANTHONY FALLS HISTORIC DISTRICT
MINNEAPOLIS, MINNESOTA
PHOTOGRAPHER: ROBERT CLOUSE

1988

MINNESOTA HISTORICAL SOCIETY - ARCHAEOLOGY DEPARTMENT
FORT SNELLING HISTORY CENTER, ST. PAUL, MN 55111

East side tower bases of the 1876 bridge. 1988 excavations

SKETCH MAP SITE #12



WEST SIDE POWER PLANT
ST. ANTHONY FALLS HISTORIC DISTRICT
MINNEAPOLIS, HENNEPIN CO., MINNESOTA
MHS ARCHAEOLOGY DEPT. PHOTO

WEST SIDE POWER PLANT WRP 1986 Roll 13 #15
ST. ANTHONY FALLS HISTORIC DISTRICT

MINNEAPOLIS, MINNESOTA

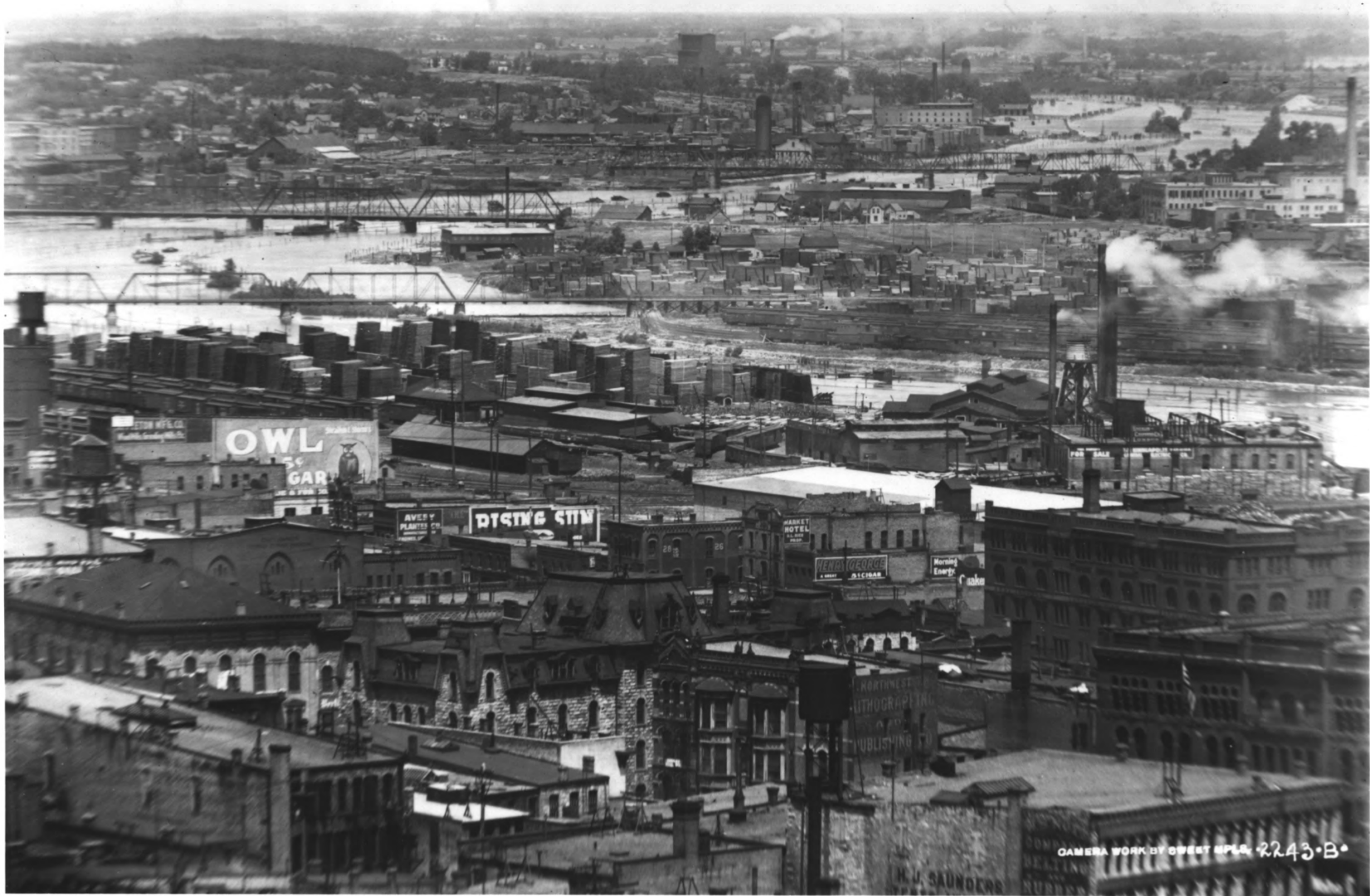
ROBERT CLOUSE

1986

MINNESOTA HISTORICAL SOCIETY - ARCHAEOLOGY DEPT.
FORT SNELLING HISTORY CENTER, ST. PAUL, MN 55111

LOOKING SOUTHEAST AT THE EXCAVATION

SKETCH MAP SITE #10



WEST SIDE POWER PLANT
ST. ANTHONY FALLS HISTORIC DISTRICT
MINNEAPOLIS, HENNEPIN CO., MINNESOTA
#17187

MH5.9
MPIg
P21

17187

WEST SIDE POWER PLANT
ST. ANTHONY FALLS HISTORIC DISTRICT
MINNEAPOLIS, MINNESOTA
PHOTOGRAPHER: SWEET, MINNEAPOLIS
CA. 1904

A.V. DEPT. - MINNESOTA HISTORICAL SOCIETY
690 CEDAR ST., ST. PAUL, MN 55101

LOOKING NORTH. THE WEST SIDE POWER PLANT
IS AT THE FAR RIGHT CENTER. NORTH MINNEAPOLIS
SAWMILLS ARE IN THE BACKGROUND.

SKETCH MAP SITE #10