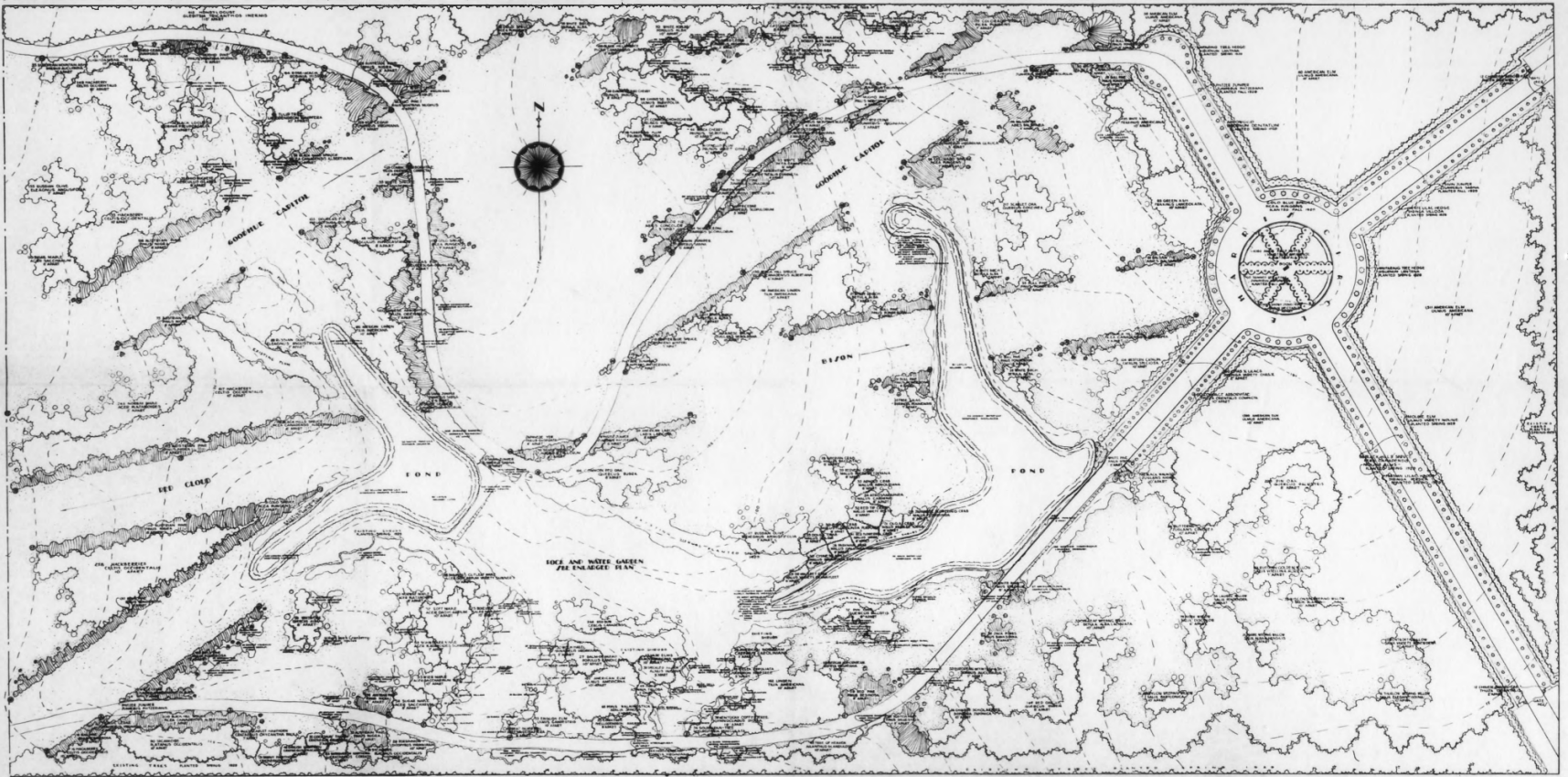


PLANTING PLAN FOR THE EAST EIGHTY ACRES OF PIONEER'S PARK • LINCOLN, NEBRASKA • JOHN W. HARRIS, LANDSCAPE ARCHITECT
100 50 25



Pioneers Park

NEHBS #LC00-45

Lincoln, Lancaster County, Nebraska

Nebraska State Historical Society
(743 #67.5-56)

"Planting Plan for the East Eighty Acres
of Pioneers Park." Photo of Original
1930 Plan by Ernst H. Hemminghaus.

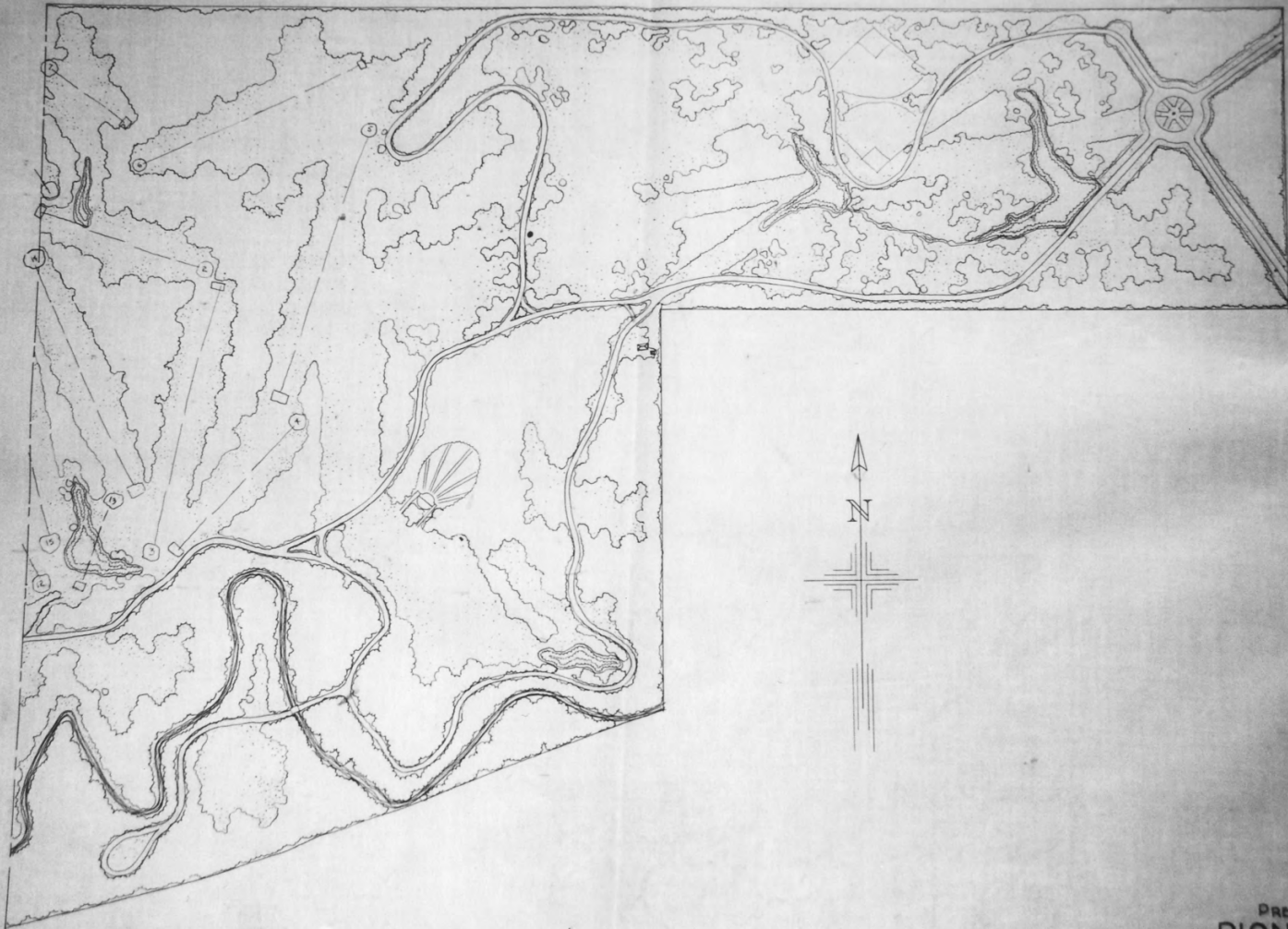
Photo #1 of 37

This photograph is supplied for research purposes only.
Permission to reproduce in any form must be obtained
in writing, from the NEBRASKA STATE HISTORICAL
SOCIETY. Responsibility regarding questions of copyright,
photographic releases, and invasion of privacy that may
arise from the use this copy is assumed by the recipient.
In the event of publication, the credit line must read:

Nebraska State Historical Society

67.5-56

743



PRELIMINARY PLAN OF
PIONEER'S PARK
ERNST HERMINGHAUS - LANDSCAPE ARCHITECT
CITY OF LINCOLN, NEBRASKA
OFFICE OF THE CITY ENGINEER

Pioneers Park

NE HBS #LC00-45

Lincoln, Lancaster County, Nebraska

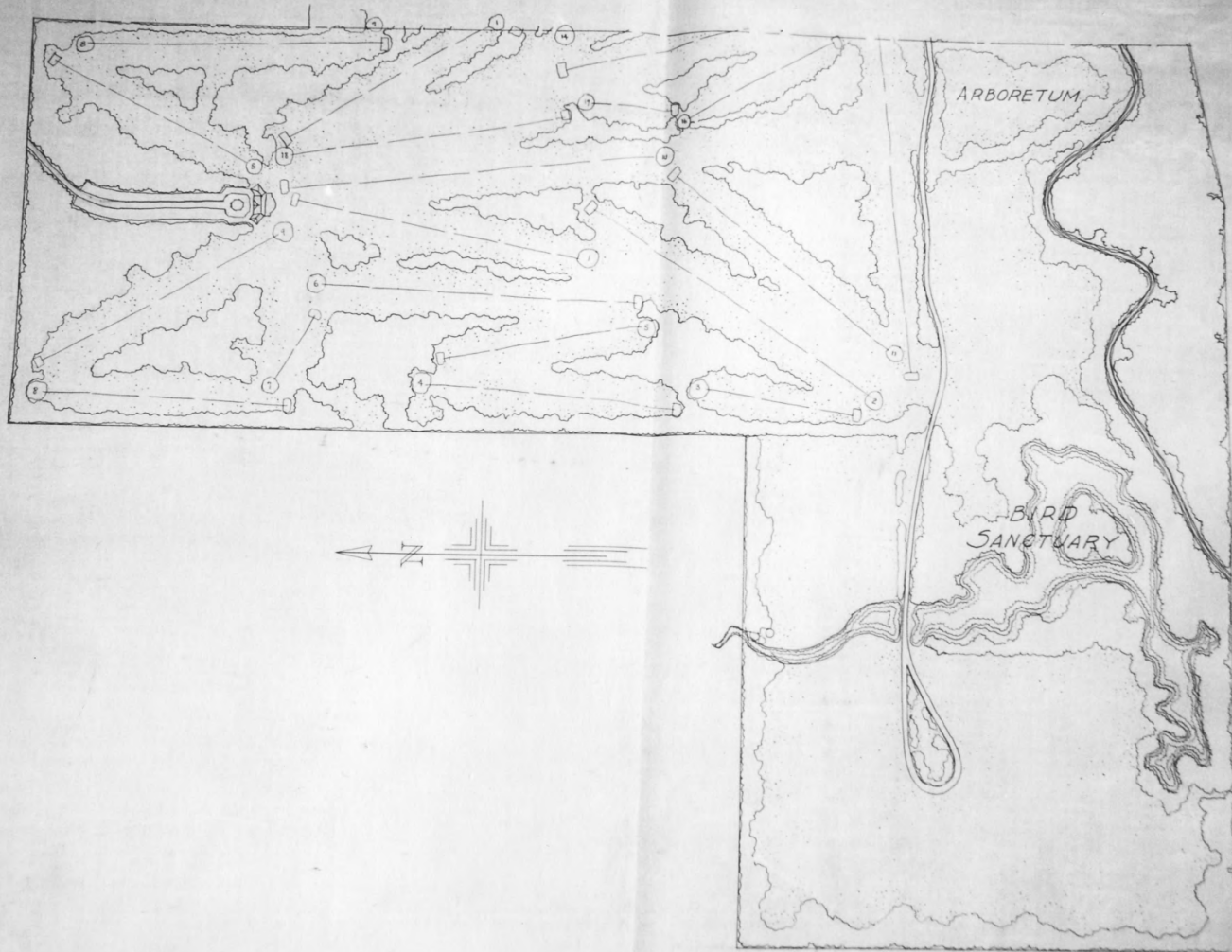
Photo by E. Zimmer, July, 1992
Lincoln City/Lancaster County

Planning Department

(9207/04:04)

Photo of Original 1935 Landscape Plan
for the eastern half of Pioneers Park,
by Ernest H. Herminghaus.

Photo #2 of 37



PRELIMINARY PLAN
PIONEER'S PARK
 ERNST HERMINGHAUS-LANDSCAPE ARCHITECT
 CITY OF LINCOLN, NEBRASKA
 OFFICE OF THE CITY ENGINEER
 SCALE 1" = 200' JULY 1935 1 SHEET
 28-A-41

Pioneers Park
NetHS #LCOO-45
Lincoln, Lancaster County, Nebraska

Photo by E. Zimmer, April, 1992
Lincoln City/Lancaster County Planning Department
(9207/04:10)

Photo of Original 1935 Landscape Plan for
the western half of Pioneers Park, by
Ernst. H. Hemminghaus.

Photo # 3 of 37



Pioneers Park

NETHS #LC00-45

Lincoln, Lancaster County, Nebraska

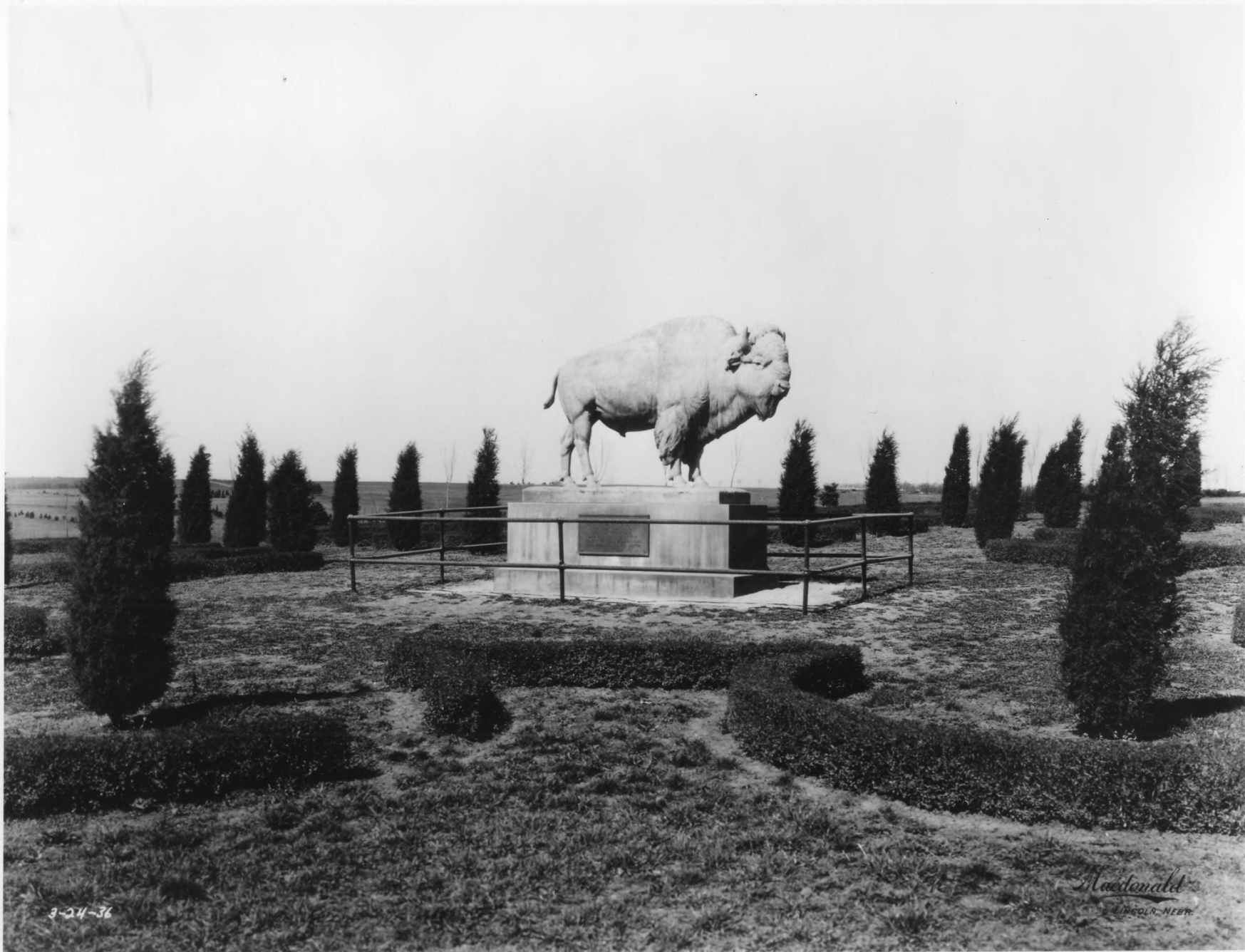
Photo by E. Zimmer, May, 1992

Lincoln City/Lancaster County Planning Department

(9205/01: OTA)

Photo of the East Entry Vista, looking west
into the Buffalo Circle terminus.

Photo #4 of 37



3-24-36

Mason
LINCOLN, NEBR.

Pioneers Park

NEHBS #LCCO-45

Lincoln, Lancaster County, Nebraska

Nebraska State Historical Society
MacDonald Photograph Collection
(M134-1936-3-24:1)

Historical photo of the Buffalo
Statue in Pioneers Park,
looking northwest.

Photo # 5 of 37

M134-1936-3-24:1
Pioneer's Park - Buffalo sculpture.

This photograph is supplied for research purposes only.
Permission to reproduce in any form must be obtained,
in writing, from the NEBRASKA STATE HISTORICAL
SOCIETY. Responsibility regarding questions of copyright,
photographic releases, and invasion of privacy that may
arise from the use this copy is assumed by the recipient.
In the event of publication, the credit line must read:

Nebraska State Historical Society

1936-3-24:1

143



Pioneers Park

NeHBS # LCOO-45

Lincoln, Lancaster County, Nebraska

Photo by A. Johnson, June, 1992

Lincoln City / Lancaster County Planning Dept.
(9206/04: 5A)

Photo of Columns Vista looking west on
Buffalo sculpture, into alle with
columns and Toboggan Hill crest.

Photo # 6 of 37



Pioneers Park
NETHS # LC00-45
Lincoln, Lancaster County, Nebraska

Photo by E. Zimmer, May, 1992
Lincoln City / Lancaster County Planning Dept.
(9205 / 01: 05A)

Photo of Buffalo Vista south, looking
northwest toward the Buffalo sculpture.

Photo # 7 of 37



Pioneers Park

NetHBS #LC00-45

Lincoln, Lancaster County, Nebraska

Photo by E. Zimmer, May, 1992

Lincoln City / Lancaster County Planning Dept.

(9205/01: 25A)

Photo of Goodhue Capitol Vista I looking
northeast to the Nebraska State Capitol
Building.

Photo #0 of 37



Pioneers Park

Ne HBes #LC00-45

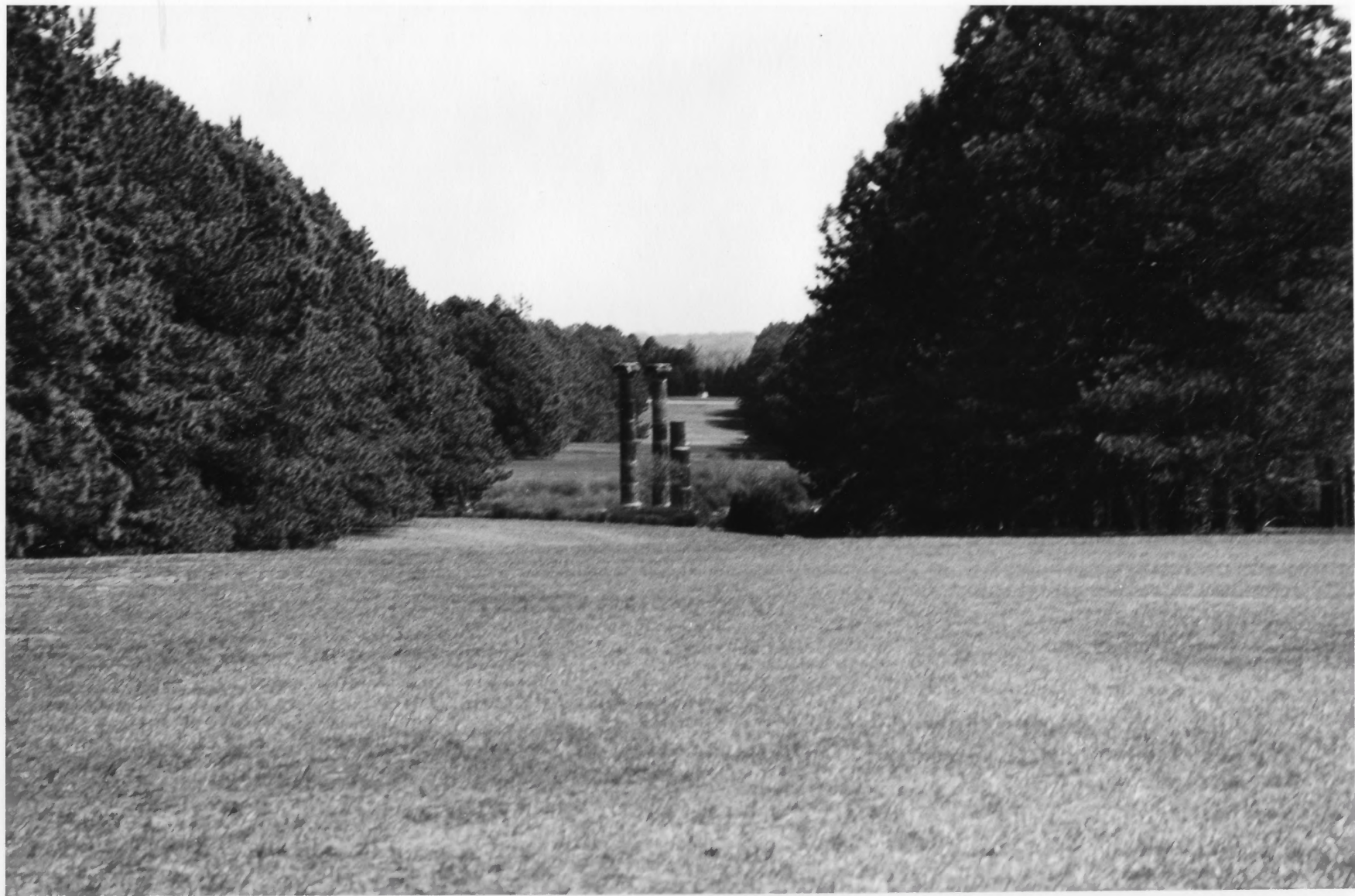
Lincoln, Lancaster County, Nebraska

Photo by E. Zimmer, May, 1992

Lincoln City / Lancaster County Planning Dept.
(9205/01:31A)

Photo of Goodhue Capitol Vista II looking
northeast to the Nebraska State Capitol
Building.

Photo # 9 of 37



Pioneers Park
NeHIS # LC00-45
Lincoln, Lancaster County, Nebraska

Photo by E. Zimmer, May, 1992
Lincoln, Lancaster County, Nebraska
(9205/01:28A)

Photo of Columns Vista, looking east to
Buffalo Circle.

Photo #10 of 37



Pioneers Park

NetHS #LC00-45

Lincoln, Lancaster County, Nebraska

Photo by E. Zimmer, May, 1992

Lincoln City/Lancaster County Planning Dept
(9205/01:18A)

Photo of Duck Pond, looking northeast
from park road.

Photo #11 of 37



Pioneers Park

NetHS #LC00-45

Lincoln, Lancaster County, Nebraska

Photo by A. Johnson, June 1992

Lincoln, Lancaster County, Nebraska

(9206/05:16)

Photo of Recreational Path, located in allee/
vista plantings between Goodhue Capitol
Vista I and Columns Vista, looking
east.

Photo #12 of 37



Pioneers Park

NeHPS # LC00-45

Lincoln, Lancaster County, Nebraska

Photo by A. Johnson, June 1992

Lincoln City/Lancaster County Planning Dept.

(9206103:14)

Photo of Meadows Area, looking east to
Toboggan Hill and the toboggan run.

Photo # 13 of 37



Pioneers Park

NetHS # LC00-45

Lincoln, Lancaster County, Nebraska

Photo by A. Johnson, June 1992

Lincoln City / Lancaster County Planning Dept.
(9206/03:15)

Photo of Meadows Area, looking northeast
to evergreen plantings and riding ring.

Photo # 14 of 37



Pioneers Park

NetHS # LC00-45

Lincoln, Lancaster County, Nebraska

Photo by A. Johnson, June 1992

Lincoln City / Lancaster County Planning Dept.
(9206/03:16)

Photo of Meadows Area, looking northeast
to evergreen plantings and road.

Photo # 15 of 37



12-15-33

Pioneers Park

NeHHS # LC00-45

Lincoln, Lancaster County, Nebraska

Nebraska State Historical Society
MacDonald Photograph Collection
(M134-1933-12-15:1)

Historical photo of newly planted
evergreen trees, 100 kgs southwest
from the Indian Hill area.

Photo # 16 of 37

M134-1933-12-15:1
Pioneer's Park.

This photograph is supplied for research purposes only.
Permission to reproduce in any form must be obtained
in writing, from the NEBRASKA STATE HISTORICAL
SOCIETY. Responsibility regarding questions of copy/right,
photographic releases, and invasion of privacy that may
arise from the use of this copy is assumed by the recipient.
In the event of publication, the credit line must read:

Nebraska State Historical Society

1933-12-15:1

743



Pioneers Park

NeHSS # LCOO-45

Lincoln, Lancaster County, Nebraska

Photo by A. Johnson, June 1992

Lincoln City / Lancaster County Planning Dept.
(#9206102:24)

Photo of Pinewood Bowl stage and shell
area, looking southwest.

Photo #17 of 37



Pioneers Park

NEHBS #LC00-45

Lincoln, Lancaster County, Nebraska

Photo by A. Johnson, June 1992

Lincoln City / Lancaster County Planning Dept.
(9206102:30)

Photo of Pinewood Bowl area, looking east
toward benches and newer plantings.

Photo # 10 of 37



Pioneers Park

NETRBS # LC00-45

Lincoln, Lancaster County, Nebraska

Photo by E. Zimmer, July 1992

Lincoln City / Lancaster County Planning Dept.
(9207/07:24A)

Photo of Indian Hill Area, looking northeast
toward the "Smoke Signal" statue.

Photo # 19 of 37



"SMOKE SIGNAL" DEDICATION - PIONEERS PARK - LINCOLN - LANCASTER CO.
9-12-35

Pioneers Park

NetHS #LC00-45

Lincoln, Lancaster County, Nebraska

Nebraska State Historical Society
FERA Photograph Collection
(F293-216) 9-12-35

Historic Photo of "Smoke Signal"
Dedication, Pioneer Park, Lincoln,
Lancaster County, 9-12-35"
Looking Southeast.

Photo #20 of 37

F293-216 "Smoke Signal" Dedication, Pioneer
Park, Lincoln, Lancaster County,
9-12-35.

This photograph is supplied for research purposes only.
Permission to reproduce in any form must be obtained
in writing from the NEBRASKA STATE HISTORICAL
SOCIETY. Responsibility regarding questions of copyright,
photographic releases, and invasion of privacy that may
arise from the use of this copy is assumed by the recipient.
In the event of publication, the credit line must read:
Nebraska State Historical Society

F293-216

793



Pioneers Park

NEHBS #LC00-45

Lincoln, Lancaster County, Nebraska

Photo by E. Zimmer, July 1992

Lincoln City / Lancaster County Planning Dept.

(92071 7:34A)

Photo of the "Smoke Signal" statue, looking
northeast.

Photo # 21 of 37



Pioneers Park

Ne HSS # LC00-45

Lincoln, Lancaster County, Nebraska

Photo by A. Johnson, June 1992
Lincoln City / Lancaster County Planning Dept.
(9206105:20)

photo of Pioneers Park Golf Course Club
House, looking northwest.

photo # 22 of 37



Pioneers Park

NeHBS # LC00-45

Lincoln, Lancaster County, Nebraska

Photo by A. Johnson, June 1992

Lincoln City / Lancaster County Planning Dept.

(9206/03:12)

photo of Pioneers Park Golf Course, looking southwest from the Meadows Area.

photo # 23 of 37



Pioneers Park

NEHES #LC00-45

Lincoln, Lancaster County, Nebraska

Nebraska State Historical Society
FERA Photograph Collection
(F293-1471) 12-23-34

Historic Photo of "Enlarging and
Rip-Rapping Canal (canal), Pioneer's
Park, Lancaster County, 12-23-34."
Looking north.

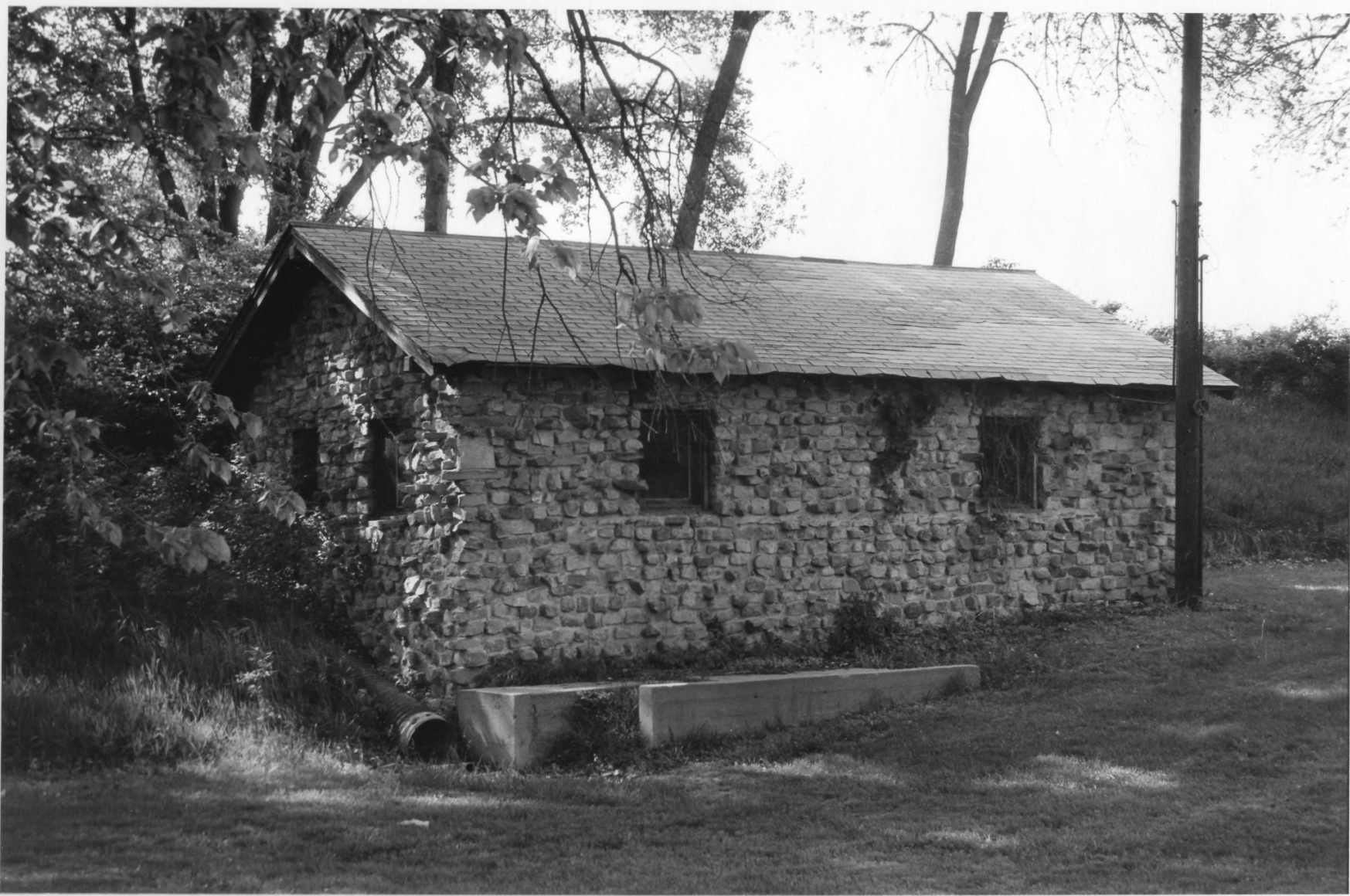
Photo # 24 of 37

F293-1471
"Enlarging and Rip-Rapping Canal (sic
canal), Pioneer's Park, Lancaster County,
12-23-34."

This photograph is supplied for research purposes only.
Permission to reproduce in any form must be obtained
in writing, from the NEBRASKA STATE HISTORICAL
SOCIETY. Responsibility regarding questions of copyright,
photographic releases, and invasion of privacy that may
arise from the use of this copy is assumed by the recipient.
In the event of publication, the crediting must read:

Nebraska State Historical Society

1. Lhl-56ed
page 1471
826



Pioneers Park

NeHBS #LC00-45

Lincoln, Lancaster County, Nebraska

Photo by A. Johnson, June 1992

Lincoln City / Lancaster County Planning Dept.

(9206103:08)

photo of the west pump house, looking northeast.

Photo # 25 of 37



PIONEERS PARK

NE HBS # LC00-45

Lincoln, Lancaster County, Nebraska

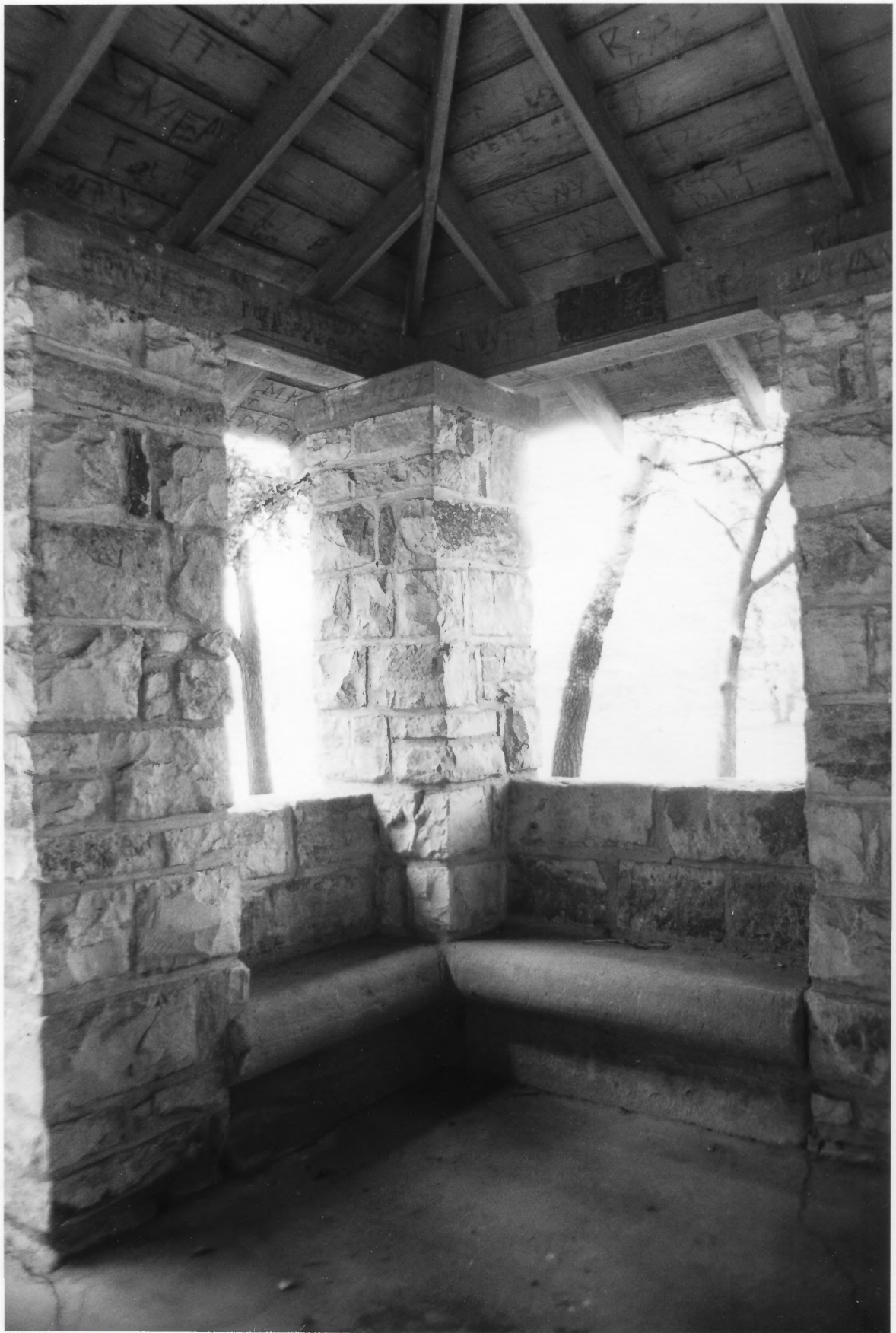
Photo by: A. Johnson, June 1992

Lincoln City / Lancaster County Planning Dept.

(9206 / 04:35A)

Photo of the stone picnic shelter, looking west.

Photo # 26 of 37.



7-17A

Pioneers Park

NEHBS # LC00-45

Lincoln, Lancaster County, Nebraska

Photo by E. Zimmer, July 1992

Lincoln City / Lancaster County Planning Dept.
(9207 / 07: 17A)

Interior photo of the stone picnic shelter,
looking southwest.

Photo # 27 of 37



Pioneers Park

Ne HBS # LC00-45

Lincoln, Lancaster County, Nebraska

Photo by A. Johnson, June 1992

Lincoln City / Lancaster County Planning Dept.
(9206/04:30A)

Photo of the 'Four Crosses' picnic table area,
looking west.

Photo # 28 of 37



Pioneers Park

NE HBS # LC00-45

Lincoln, Lancaster County, Nebraska

Nebraska State Historical Society

FERA Photograph Collection
(F 293-1762) 2-11-35.

Photo of "Tool House", Pioneers Park,
Lincoln, Nebraska, Lancaster
County, 2-11-35. LOOKING
southwest.

Photo # 29 of 37

F293-1762
"Tool House, Pioneer's Park, Lincoln,
Nebraska, Lancaster County, 2-11-35."

This photograph is supplied for research purposes only. Permission to reproduce in any form must be obtained in writing from the NEBRASKA STATE HISTORICAL SOCIETY. Responsibility regarding questions of copyright, photographic releases, and invasion of privacy that may arise from the use of this copy is assumed by the recipient. In the event of publication, the credit line must read:

Nebraska State Historical Society

F293-1762
298



Pioneers Park

NEHBS # LC00-45

Lincoln, Lancaster County, Nebraska

Photo by A. Johnson, June 1992

Lincoln City / Lancaster County Planning Dept.
(9206/03:19)

Photo of the Park Maintenance Area, the
Tool House, looking northwest.

Photo # 30 of 37



Pioneers Park

NeHBS #LC00-45

Lincoln, Lancaster County, Nebraska

Photo by A. Johnson, June 1992

Lincoln City / Lancaster County Planning Dept.
(9206104: 19A)

Photo of WPA windmill in Chet Ager Nature
Center, looking northeast.

Photo #31 of 31.



Pioneers Park

Ne HBS # LC00-45

Lincoln, Lancaster County, Nebraska

Photo by A. Johnson, June 1992

Lincoln City / Lancaster County Planning Dept.
(9206/04:27A)

Photo of the Wetlands Bridge in the Chet
Aeger Nature Center, looking southwest.

Photo # 32 of 37.



Pioneers Park

Ne HBS # LC00-45

Lincoln, Lancaster County, Nebraska

Photo by A. Johnson, June 1992

Lincoln City / Lancaster County Planning Dept.
(9206 / 04:14A)

Photo of Pioneers Prairie Interpretive Center,
looking west.

Photo # 33 of 37.



Pioneers Park

NE HHS # LC00-45

Lincoln, Lancaster County, Nebraska

Photo by: A. Johnson, June, 1992

Lincoln City / Lancaster County Planning Dept.
(9206/04:13A)

Photo of the western drive to the Pioneers
Park Zoo, looking west.

Photo # 34 of 37



Pioneers Park

NeHBS #LC00-45

Lincoln, Lancaster County, Nebraska

Photo by: E. Zimmer, July 1992

Lincoln City/Lancaster County Planning Dept.
(9207 / 04: 10A)

Photo of western drive to the Pioneers Park
zoo, looking northeast into crescent of
trees in median loop.

Photo # 35 of 37.



Pioneers Park

NetHS # LC00-45

Lincoln, Lancaster County, Nebraska

Photo by E. Zimmer, July, 1992

Lincoln City / Lancaster County Planning Dept.
(92071 04:11A)

Photo of Pioneers Park zoo area, looking
southeast onto stone shelter and prairie view.

Photo # 36 of 37.



Pioneers Park

NetHS #LC00-45

Lincoln, Lancaster County, Nebraska

Photo by A. Johnson, June 1992

Lincoln City / Lancaster County Planning Dept.
(9206/04:26A)

Photo of stone shelter in Pioneers Park Zoo,
looking northeast from Chet Agor Nature Center.

Photo #37 of 37