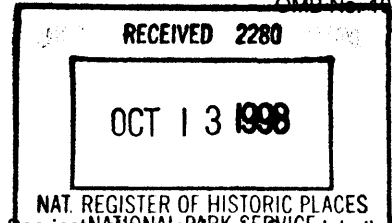


United States Department of the Interior
National Park Service

NATIONAL REGISTER OF HISTORIC PLACES
REGISTRATION FORM

1348



This form is for use in nominating or requesting determinations for individual properties and districts. See instructions in NPS Form 10-900a. Complete the National Register of Historic Places Registration Form (National Register Bulletin 16A). Complete each item by marking "x" in the appropriate box or by entering the information requested. If any item does not apply to the property being documented, enter "N/A" for "not applicable." For functions, architectural classification, materials, and areas of significance, enter only categories and subcategories from the instructions. Place additional entries and narrative items on continuation sheets (NPS Form 10-900a). Use a typewriter, word processor, or computer, to complete all items.

1. Name of Property

historic name CENTRAL ACADEMY

other names/site number _____

2. Location

street & number 1207 Washington Street

N/A not for publication

city or town Palatka

N/A vicinity

state FLORIDA code FL county Putnam code 107 zip code 32177

3. State/Federal Agency Certification

As the designated authority under the National Historic Preservation Act, as amended, I hereby certify that this nomination request for determination of eligibility meets the documentation standards for registering properties in the National Register of Historic Places and meets the procedural and professional requirements set forth in 36 CFR Part 60. In my opinion, the property meets does not meet the National Register criteria. I recommend that this property be considered significant nationally statewide locally. (See continuation sheet for additional comments.)

[Signature] 9/30/98
Signature of certifying official/Title Date

Florida State Historic Preservation Officer, Division of Historical Resources
State or Federal agency and bureau

In my opinion, the property meets does not meet the National Register criteria. (See continuation sheet for additional comments.)

Signature of certifying official/Title Date

State or Federal agency and bureau

4. National Park Service Certification

I hereby certify that the property is:

- entered in the National Register See continuation sheet
- determined eligible for the National Register See continuation sheet.
- determined not eligible for the National Register See continuation sheet.
- removed from the National Register.
- other, (explain) _____

[Signature]
Signature of the Keeper

11.12.98
Date of Action

5. Classification

Ownership of Property

(Check as many boxes as apply)

- private
- public-local
- public-State
- public-Federal

Category of Property

(Check only one box)

- buildings
- district
- site
- structure
- object

Number of Resources within Property

(Do not include any previously listed resources in the count)

Contributing	Noncontributing	
1	4	buildings
0	0	sites
0	0	structures
0	0	objects
1	4	total

Name of related multiple property listings

(Enter "N/A" if property is not part of a multiple property listing.)

"N/A"

Number of contributing resources previously listed in the National Register

0

6. Function or Use

Historic Functions

(Enter categories from instructions)

EDUCATION: school

Current Functions

(Enter categories from instructions)

EDUCATION: education-related

7. Description

Architectural Classification

(Enter categories from instructions)

OTHER: masonry vernacular

Materials

(Enter categories from instructions)

foundation CONCRETE

walls STUCCO

roof ASPHALT

other

Narrative Description

(Describe the historic and current condition of the property on one or more continuation sheets.)

8. Statement of Significance

Applicable National Register Criteria

(Mark "x" in one or more boxes for the criteria qualifying the property for National Register listing.)

- A** Property is associated with events that have made a significant contribution to the broad patterns of our history.
- B** Property is associated with the lives of persons significant in our past.
- C** Property embodies the distinctive characteristics of a type, period, or method of construction or represents the work of a master, or possesses high artistic values, or represents a significant and distinguishable entity whose components lack individual distinction.
- D** Property has yielded, or is likely to yield information important in prehistory or history.

Criteria Considerations

(Mark "x" in all the boxes that apply.)

Property is:

- A** owned by a religious institution or used for religious purposes.
- B** removed from its original location.
- C** a birthplace or grave.
- D** a cemetery.
- E** a reconstructed building, object, or structure.
- F** a commemorative property.
- G** less than 50 years of age or achieved significance within the past 50 years

Areas of Significance

(Enter categories from instructions)

EDUCATION

ETHNIC HISTORY: BLACK

Period of Significance

1936-1948

Significant Dates

1936

Significant Person

N/A

Cultural Affiliation

N/A

Architect/Builder

Benjamin, Roy A./WPA

Narrative Statement of Significance

(Explain the significance of the property on one or more continuation sheets.)

9. Major Bibliographical References

Bibliography

Cite the books, articles, and other sources used in preparing this form on one or more continuation sheets.)

Previous documentation on file (NPS):

- preliminary determination of individual listing (36 CFR 36) has been requested
- previously listed in the National Register
- previously determined eligible by the National Register
- designated a National Historic Landmark
- recorded by Historic American Buildings Survey # _____
- recorded by Historic American Engineering Record

Primary location of additional data:

- State Historic Preservation Office
- Other State Agency
- Federal agency
- Local government
- University
- Other

Name of Repository

10. Geographical Data

Acreage of Property 3.6 acres

UTM References

(Place additional references on a continuation sheet.)

1	1	7	4	3	8	0	0	0	3	2	8	0	5	8	0
	Zone		Easting						Northing						
2															

3														
	Zone		Easting						Northing					
4														

See continuation sheet

Verbal Boundary Description

(Describe the boundaries of the property on a continuation sheet.)

Boundary Justification

(Explain why the boundaries were selected on a continuation sheet.)

11. Form Prepared By

name/title Lawrence Hutcherson/Robert O. Jones, Historic Sites Specialist

organization Bureau of Historic Preservation date September 1998

street & number R.A. Gray Building, 500 S. Bronough Street telephone (850) 487-2333

city or town Tallahassee state Florida zip code 32399-0250

Additional Documentation

Submit the following items with the completed form:

Continuation Sheets

Maps

A USGS map (7.5 or 15 minute series) indicating the property's location.

A Sketch map for historic districts and properties having large acreage or numerous resources.

Photographs

Representative black and white photographs of the property.

Additional items

(check with the SHPO or FPO for any additional items)

Property Owner

(Complete this item at the request of SHPO or FPO.)

name Putnam County District School Board

street & number 200 South Seventh Street telephone (904) 329-0516

city or town Palatka state FL zip code 32177

Paperwork Reduction Act Statement: This information is being collected for applications to the National Register of Historic Places to nominate properties for listing or determine eligibility for listing, to list properties, and amend listings. Response to this request is required to obtain a benefit in accordance with the National Historic Preservation Act, as amended (16 U.S.C. 470 et seq.).

Estimated Burden Statement: Public reporting burden for this form is estimated to average 18.1 hours per response including time for reviewing instructions, gathering and maintaining data, and completing and reviewing the form. Direct comments regarding this burden estimate or any aspect of this form to the Chief, Administrative Services Division, National Park Service, P.O. Box 37127, Washington, DC 20013-7127; and the Office of Management and Budget, Paperwork Reductions Projects (1024-0018), Washington, DC 20503.

United States Department of the Interior
National Park Service

**NATIONAL REGISTER OF HISTORIC PLACES
CONTINUATION SHEET**

Section number 7 Page 1 **CENTRAL ACADEMY, PALATKA, PUTNAM
COUNTY, FLORIDA**

SUMMARY

Central Academy School is located at 1200 Washington Street, Palatka, Putnam County, Florida. The 1936, one-story school has a "U" footprint, continuous footer foundation, stucco exterior walls, and a cross-gable roof with roll-roofing. Four non-contributing storage buildings are on the property.

SETTING

Central Academy School fronts onto east/west Washington Street, located within a residential neighborhood. The school is 5 blocks north of US 17/SR 100, the main east/west thoroughfare through Palatka. Southern Coast Line Railroad tracks run north/south directly east of the school property, and curve northwest one block north of the property. The land is flat and mature trees are prevalent throughout the neighborhood. Four wooden storage buildings were placed to the south and east of the school in the 1970s and 1980s.

PHYSICAL DESCRIPTION

Exterior

The Central Academy is a 1936, one-story school with a "U" shaped footprint with intersecting gable roof. The off-grade continuous concrete foundation is scored horizontally, and has under floor vents. The foundation supports stuccoed exterior walls, accented by a course of brick, and with a concrete cornice. The gable roof has rolled roofing. Windows consist of grouped 9/9, double-hung wooden sashes.

The main, north facade has a central entrance accented by a slight intersecting gable extension, accessed by five concrete steps with cheeks, a brick surround, and recessed doors (Photos #1&2). The double doors have six lights in the upper half and a ten light transom. (The doors are currently covered with plywood). Above the doorway is a panel that reads "Service Center." The entrance is flanked by regularly spaced windows. The sashes, separated by a vertical mullion, are in pairs. Three pairs are grouped for each classroom. To each side of the entrance is one pair, two groupings of three pairs, and one small corner window. Four shed roof dormer vents are on the roof.

United States Department of the Interior
National Park Service

**NATIONAL REGISTER OF HISTORIC PLACES
CONTINUATION SHEET**

Section number 7 Page 2 **CENTRAL ACADEMY, PALATKA, PUTNAM
COUNTY, FLORIDA**

The west elevation of the west wing has two pairs of windows in the northwest corner and a recessed entrance with five steps into the north block (Photos #3&4). The entrance is centered under the gable end of the north block roof. Five sets of three pairs of windows line the extension to the south. Four shed roofed dormer vents line the roof.

The east elevation of the east wing mirrors the west elevation except that a temporary wooden building has been connected to the east entrance by a plywood hall (Photo #5).

The south elevation has the gable ends of the two wings, and the inner space of the "U" footprint is visible (Photo #6). Central doors with steps are centered in each gable end with two pairs of windows flanking the doors toward the inner space. The inner space is lined with windows. In the west corner of the north wing is a small protruding room with a brick chimney rising from it. It has a horizontal wooden siding. A door into the north wing is beside this room. (See the architect's detail attachment.) An open-air, metal roofed shed, supported by round steel posts is attached to the west wing, within the inner space.

Interior

Entering the main entrance at the north end there is a vestibule. The floors are linoleum covered wood. The walls and ceiling are plaster. Each of the three blocks has a central hallway joining the rooms (Photos #7&8). Vertical wooden wainscoting lines the hallway. Wooden doors with 9 lights access each classroom, and two pivoting, 6 light transoms are between each classroom and hall. The north block contains the teacher's room, principal's office, library and English classroom, home economics classroom, other class rooms, bathrooms, and storage (Photos #9,10,11). The east and west blocks contain 19 classrooms including the science room. Bathrooms are at the south end of the two extension blocks.

ALTERATIONS

During the non-historic period a storage area was built within the "U", onto the south end of the west wing. It is an open-air metal shed, supported by round steel posts, and enclosed with chain-link fencing. The original school desks are stored there. A metal shed roof shelters the south entrance in the east wing. This entrance is the primary access for

**United States Department of the Interior
National Park Service**

**NATIONAL REGISTER OF HISTORIC PLACES
CONTINUATION SHEET**

Section number 7 Page 3 **CENTRAL ACADEMY, PALATKA, PUTNAM
COUNTY, FLORIDA**

the schools' use as a storage facility. Bolt connections to the historic building supporting the shed roof are at the eaves, and do not diminish the architectural integrity of the historic building.

**United States Department of the Interior
National Park Service**

**NATIONAL REGISTER OF HISTORIC PLACES
CONTINUATION SHEET**

Section number 8 Page 1 **CENTRAL ACADEMY, PALATKA, PUTNAM
COUNTY, FLORIDA**

SUMMARY

The Central Academy School is nominated to the National Register on the local level under Criterion A in the areas of Education and Black Ethnic Heritage. The 1936 school replaced an 1892 building destroyed by fire. Central Academy served as the sole educational facility for Blacks in the city of Palatka during its historic period from 1936 to 1948.

HISTORIC CONTEXT

Prior to the 1890s, Black students in Palatka attended what was known as Public School #2 in various city halls. Professor Peter Joseph, a graduate of Old Cookman (later Bethune-Cookman) in Daytona, served as principal from 1888-1890. In 1892, under principal Professor Holmes, the city built two identical schools on Orange Street (currently Reid Street). One was for whites and the other for Blacks. There were six teachers, and classes were held for grades one through eight. The name Central Academy was given by Mrs. M.M. Drakeford, and the school colors of purple and gold were selected. Salaries were raised and strong curricula established. Ninth and tenth grades were added, and football, and girl's and boy's basketball teams were organized which competed against neighboring city schools. A strong music program and school band were developed. A theater program was begun and annual senior class plays and class nights were presented.

By the early 1920s, the enrollment had grown, and there were fourteen teachers. From 1923-1929, Professor Clarence C. Walker, a recent graduate of Tuskegee Institute, Mississippi, served as principal. Walker believed strongly that Black schools needed to be accredited and staffed by teachers with college degrees. He pushed for the school's accreditation from the State of Florida Department of Public Instruction; it received it in 1925. Central Academy was the first "Negro standard high school," and first public school of any kind in the state to be accredited. Only three private schools for whites were so accredited at that time in Florida. In addition to being the first accredited public school in the state, under principal Walker, in 1924, the school produced the first annual publication for a high school in the state.

**United States Department of the Interior
National Park Service**

**NATIONAL REGISTER OF HISTORIC PLACES
CONTINUATION SHEET**

Section number 8 Page 2 **CENTRAL ACADEMY, PALATKA, PUTNAM
COUNTY, FLORIDA**

HISTORIC SIGNIFICANCE

In the early morning of January 28th, 1936, the 1892 Central Academy school burned to the ground in a blaze that threatened several surrounding homes and a lumber yard. Following the fire, the new principal, A.J. Polk, arranged temporary accommodations in neighborhood churches and city buildings for classes to continue. On March 16, 1936, the county Board of Public Instruction passed a resolution to purchase blocks #222 and #223 to build a new school, and to sell the old lots. Complete architectural drawings were dated August 1, 1936, by Roy A. Benjamin, of Jacksonville. Benjamin (1888-1963) was a prominent Florida architect who designed many public and education buildings, and was known as a prolific theater builder. His works include the Florida Theater (NR 1982); Fire Station #14, Park Lane Apartments, Leon Cheek Residence (NR 1985), Kirby Smith Junior High School (NR 1983), Scottish Rite Masonic Temple, San Marco Theater, and Brentwood Park Bandstand in Jacksonville; Marion Theater in Ocala; and Marble Arcade in Lakeland (NR 1997). On August 4th, the board entered into an agreement with the federal government's Works Progress Administration to begin construction immediately, and continue until December 31, 1936. The WPA was not held responsible for any uncompleted work after that date, the remainder of expenses to be carried by the county.

The first classes in the new building were held during the 1937-1938 session. The school operated classes for grades one through twelve to a growing population, with an increasingly professional teaching staff.

In 1932, the City of Palatka began a public library intended for Blacks which was operated out of several persons' homes. In 1944, the library was moved to Central Academy and expanded under librarian Mrs. G.L. Long. The collection included eighty current magazines, three daily, and two weekly newspapers. Under the capable and progressive guidance of Mrs. Long, a substantial special collection was developed of publications by and about Blacks.

Two blocks to the east of the school were the Black community's auditorium and swimming pool. The school building did not contain an auditorium, so students walked to the auditorium to attend assemblies and presentations and to use the pool.

The high academic standards established by Principal Walker were maintained, and the school remained the only accredited school for Blacks

**United States Department of the Interior
National Park Service**

**NATIONAL REGISTER OF HISTORIC PLACES
CONTINUATION SHEET**

Section number 8 Page 3 **CENTRAL ACADEMY, PALATKA, PUTNAM
COUNTY, FLORIDA**

in the state. The teachers were encouraged to continue their studies and earn graduate degrees, and high academic standards were required for the students as well. The school had a special laboratory for teaching science, physical geography, zoology, and a large map collection. The school also had a prominent music program, and a complete library with a progressive library collection.

In February of 1956, a new high school for Blacks, Central Academy High School opened. The existing school became known as Central Academy Elementary School, and included first through sixth grades. The school continued until 1969, and was used for summer classes until 1971. The county school board is currently using the building for storage.

**United States Department of the Interior
National Park Service**

**NATIONAL REGISTER OF HISTORIC PLACES
CONTINUATION SHEET**

Section number 9 Page 1 **CENTRAL ACADEMY, PALATKA, PUTNAM
COUNTY, FLORIDA**

BIBLIOGRAPHY

Benjamin, Roy A., architect, building plans, August 1936.

Board of Public Instruction, Minutes Book, p.344, 350, 370, 392, 1935-1936.
(purchase and construction agreements)

Central Academy Annual, 1923 (first edition); c.1957. (Annual school histories for dedication in 1956, and c.1957 were written by teachers Rosa Ragsdale, Magi Hines, Rachel D. Williams).

Palatka Daily News, "Palatka Has Only Accredited Negro School," - 1924.

_____, "Flames Fanned by High Winds Hard to Handle," Jan. 29, 1936.

"History of Central Academy High School," Dedication, Central Academy High School, 1956.

**United States Department of the Interior
National Park Service**

**NATIONAL REGISTER OF HISTORIC PLACES
CONTINUATION SHEET**

Section number 10 Page 1 **CENTRAL ACADEMY, PALATKA, PUTNAM
COUNTY, FLORIDA**

VERBAL BOUNDARY DESCRIPTION

Palatka Kennerly's Addition MB3, p.161, All of Blocks 222 and 223 (except railroad right of way).

BOUNDARY JUSTIFICATION

The boundary encompasses the property historically associated with Central Academy school since it was constructed in 1936.

**United States Department of the Interior
National Park Service**

**NATIONAL REGISTER OF HISTORIC PLACES
CONTINUATION SHEET**

Section number _____ Photos _____ Page 1 **CENTRAL ACADEMY, PALATKA, PUTNAM
COUNTY, FLORIDA**

PHOTOGRAPHIC LIST

1. Central Academy, 1200 Washington St., Palatka
2. Putnam County, Florida
3. Lawrence Hutcherson
4. 1998
5. Lawrence Hutcherson, P.O.Box 2186, Palatka, FL 32177
6. Main, north facade with main entrance, facing south
7. Photo #1 of 11

Items 1-5 are the same for the following photographs.

6. Main facade showing windows, facing southwest
7. Photo #2 of 11

6. West elevation showing west entrance, facing northeast
7. Photo #3 of 11

6. West elevation, facing northeast
7. Photo #4 of 11

6. East elevation, facing north/west
7. Photo #5 of 11

6. South elevation showing inner area, facing north
7. Photo #6 of 11

6. Interior of east wing hall, facing north
7. Photo #7 of 11

6. West wing hall showing south entrance, facing south
7. Photo #8 of 11

6. Typical classroom showing blackboard, facing north
7. Photo #9 of 11

**United States Department of the Interior
National Park Service**

**NATIONAL REGISTER OF HISTORIC PLACES
CONTINUATION SHEET**

Section number _____ Photos _____ Page 2 **CENTRAL ACADEMY, PALATKA, PUTNAM
COUNTY, FLORIDA**

6. Classroom showing windows, facing west
7. Photo #10 of 11

6. Janitor's utility sink, facing south
7. Photo #11 of 11

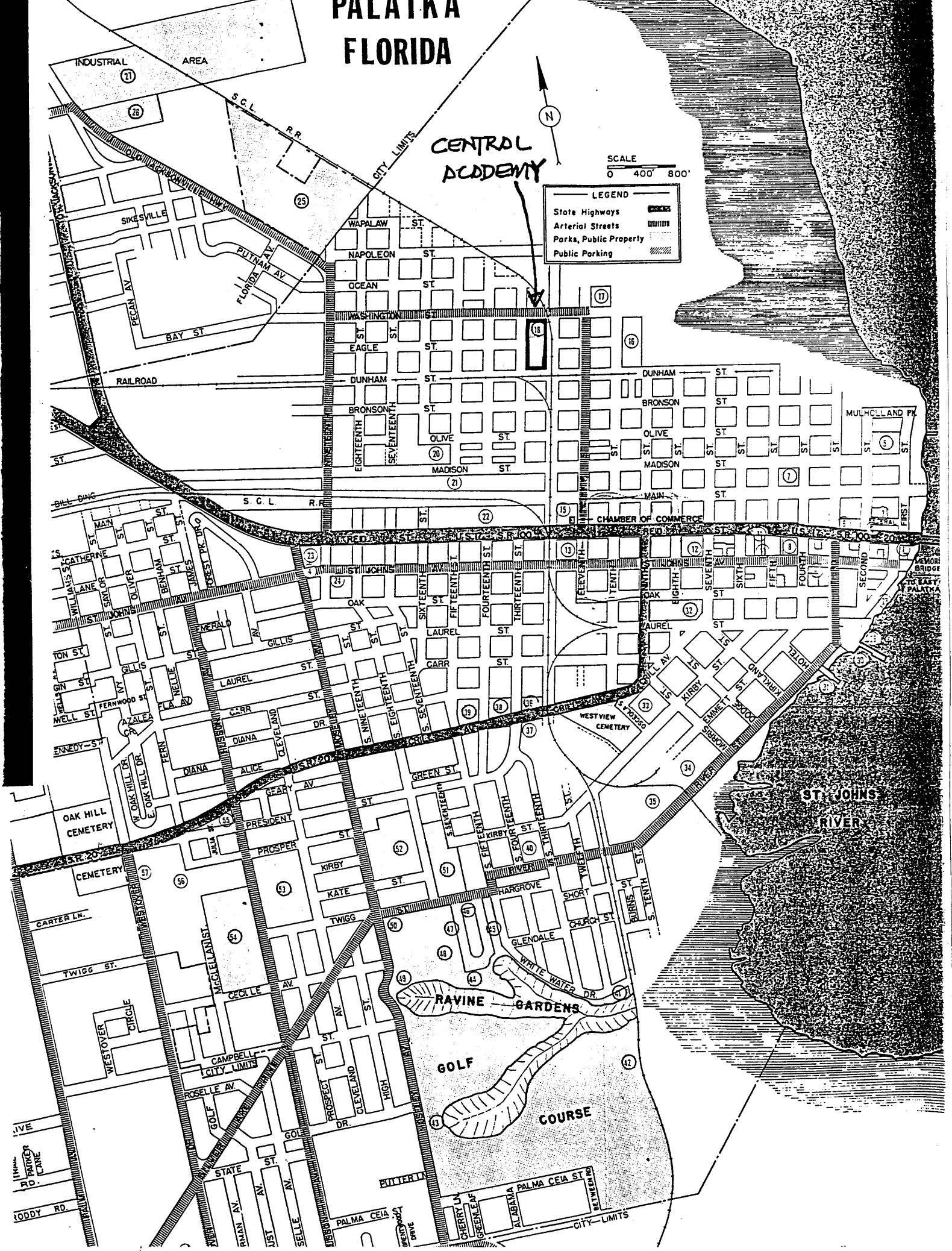
PALATKA FLORIDA

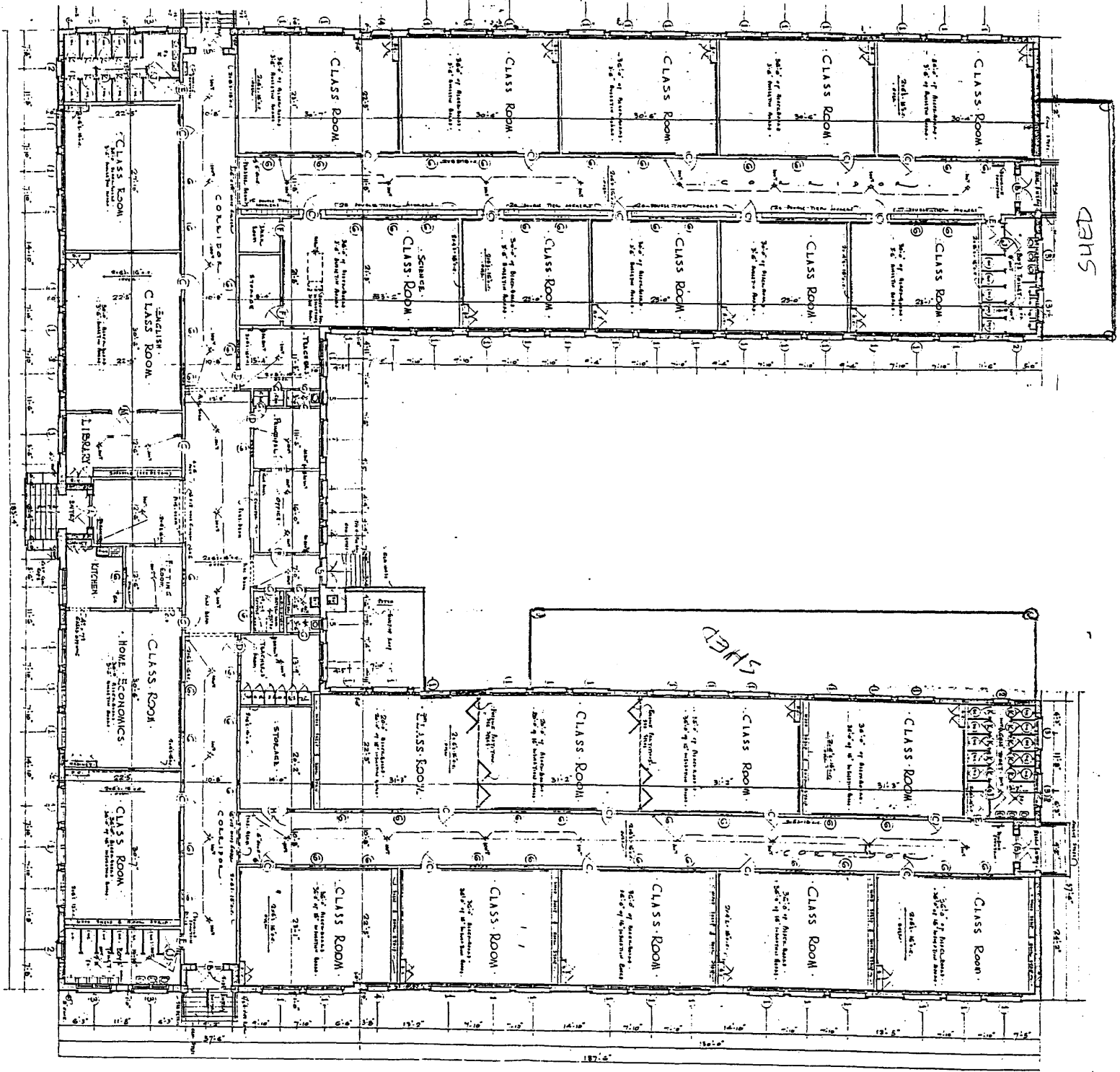
CENTRAL
ACADEMY

SCALE
0 400' 800'

LEGEND

- State Highways
- Arterial Streets
- Parks, Public Property
- Public Parking





CENTRAL ACADEMY FLOOR PLAN
 PALATKA, PUTNAM CO., FL.

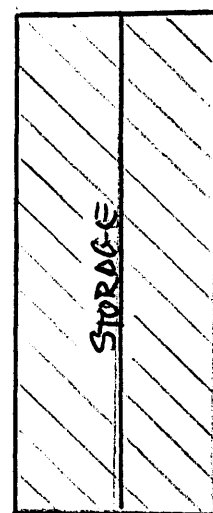
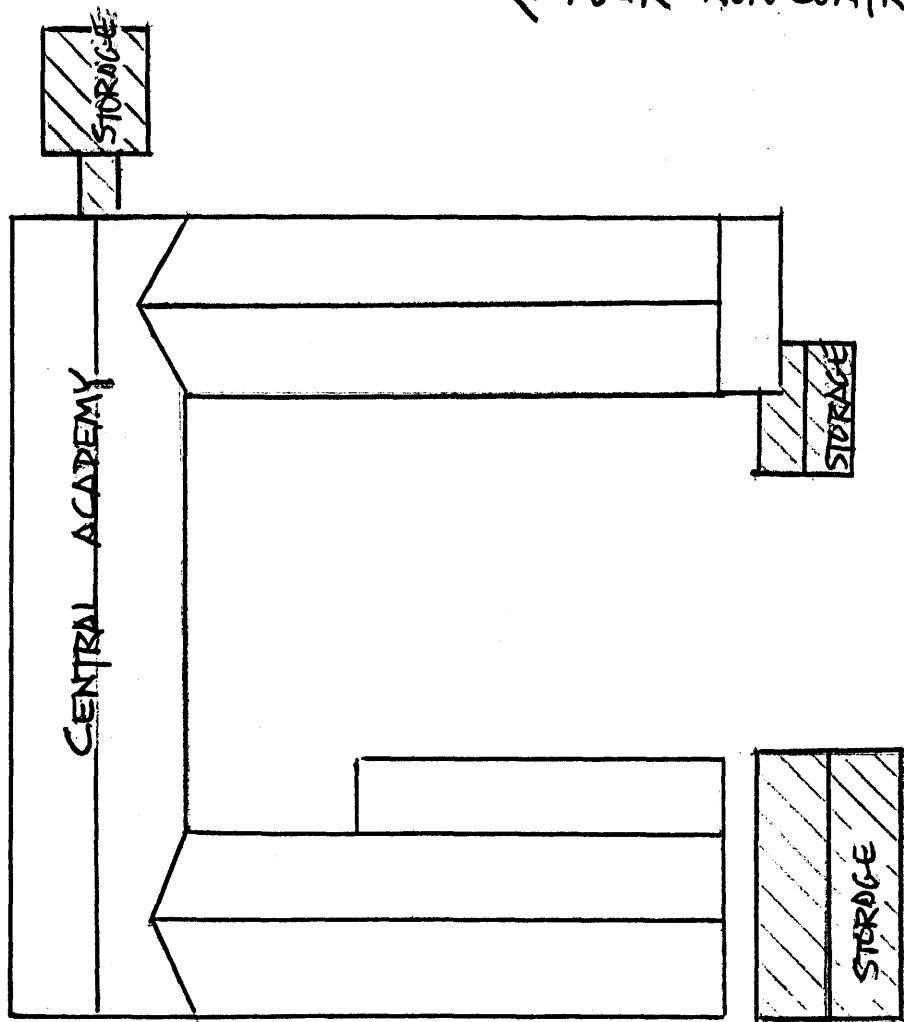
13TH ST.



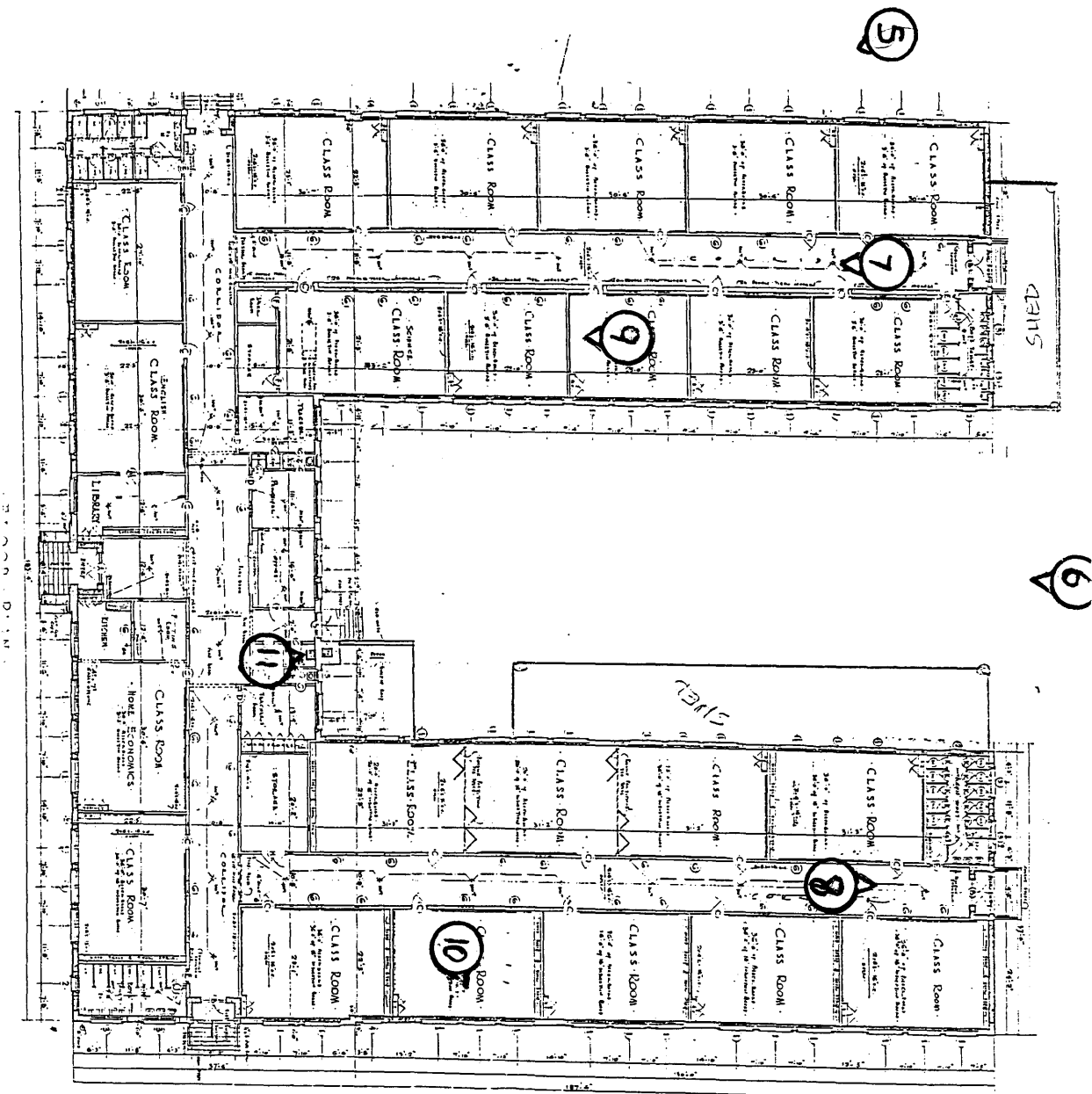
/// CENTRAL ACADEMY, PALATKA, PUTNAM CO, FL
/// FOUR NON-CONTRIBUTING STORAGE BUILDINGS

NOT TO SCALE

WASHINGTON ST.



THIRTEENTH ST.



CENTRAL ACADEMY FLOOR PLAN
 PALATKA, PUTNAM CO., FL.

13TH ST



①
②

⑩

⑩

⑧

⑨

⑦

⑤

⑥

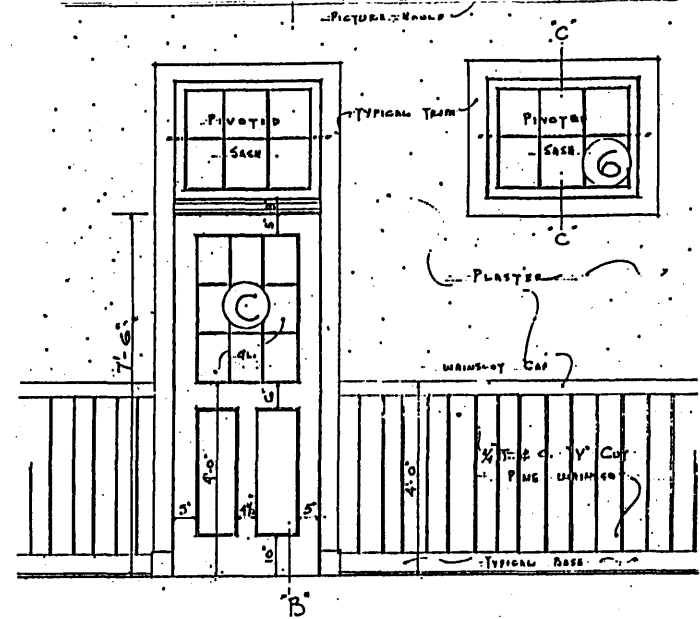
③

④

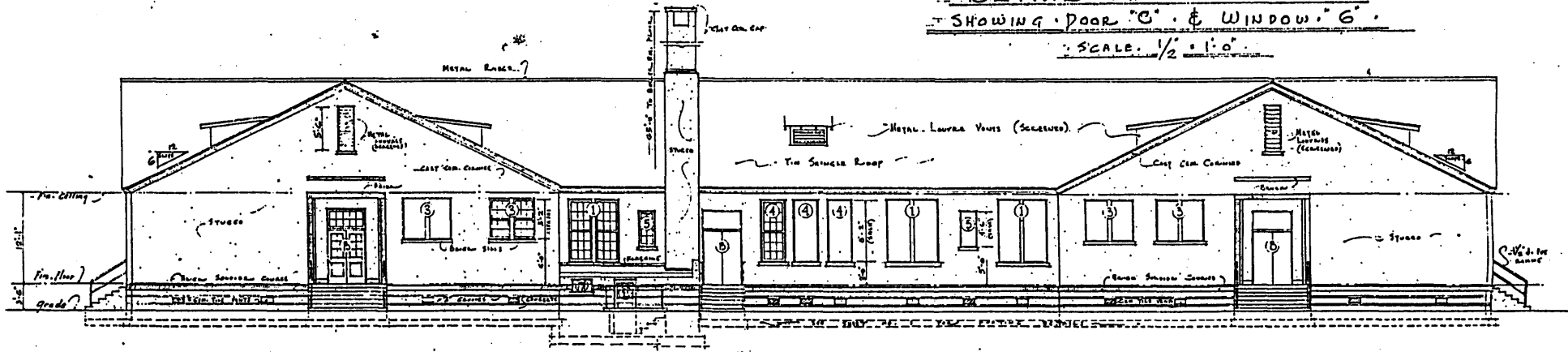
PHOTO DIAGRAM

CENTRAL ACADEMY PALATKA, PUTNAM CO., FL

DETAILS FROM 1936
ARCHITECT'S PLANS



DETAIL OF CORRIDOR
SHOWING DOOR "C" & WINDOW "6"
SCALE: 1/2" = 1'-0"



REAR ELEVATION
SCALE: 1/4" = 1'-0"

SCHOOL BUILDING			
At			
PALATKA FLORIDA			
FOR			
BOARD OF PUBLIC INSTRUCTION			
Putnam County Fla.			
Comm. No.	DATE	ROY. A. BENJAMIN, A.I.A.	SHEET
615	Aug. 1-1936	Architect	1
DRAWN	314. BISBEE BUILDING		
RSM	JACKSONVILLE FLORIDA		