

United States Department of the Interior
National Park Service

National Register Of Historic Places Continuation Sheet

Section number: Photographs Page: 1

Baker Station
Tuolumne County, CA

1



Setting. Taken from porch of Superintendent's Cabin. Highway 108 and Stanislaus River in background.

**United States Department of the Interior
National Park Service**

**National Register Of Historic Places
Continuation Sheet**

Section number: Photographs Page: 2

**Baker Station
Tuolumne County, CA
2**



Overview of Baker Station residential area. From closest to furthest, buildings are: bunkhouse, social hall, worker's cabin, dining hall, and foreman's cabin (superintendent's cabin is out of view).

United States Department of the Interior
National Park Service

National Register Of Historic Places Continuation Sheet

Section number: Photographs Page: 3

Baker Station
Tuolumne County, CA
3



Bunkhouse

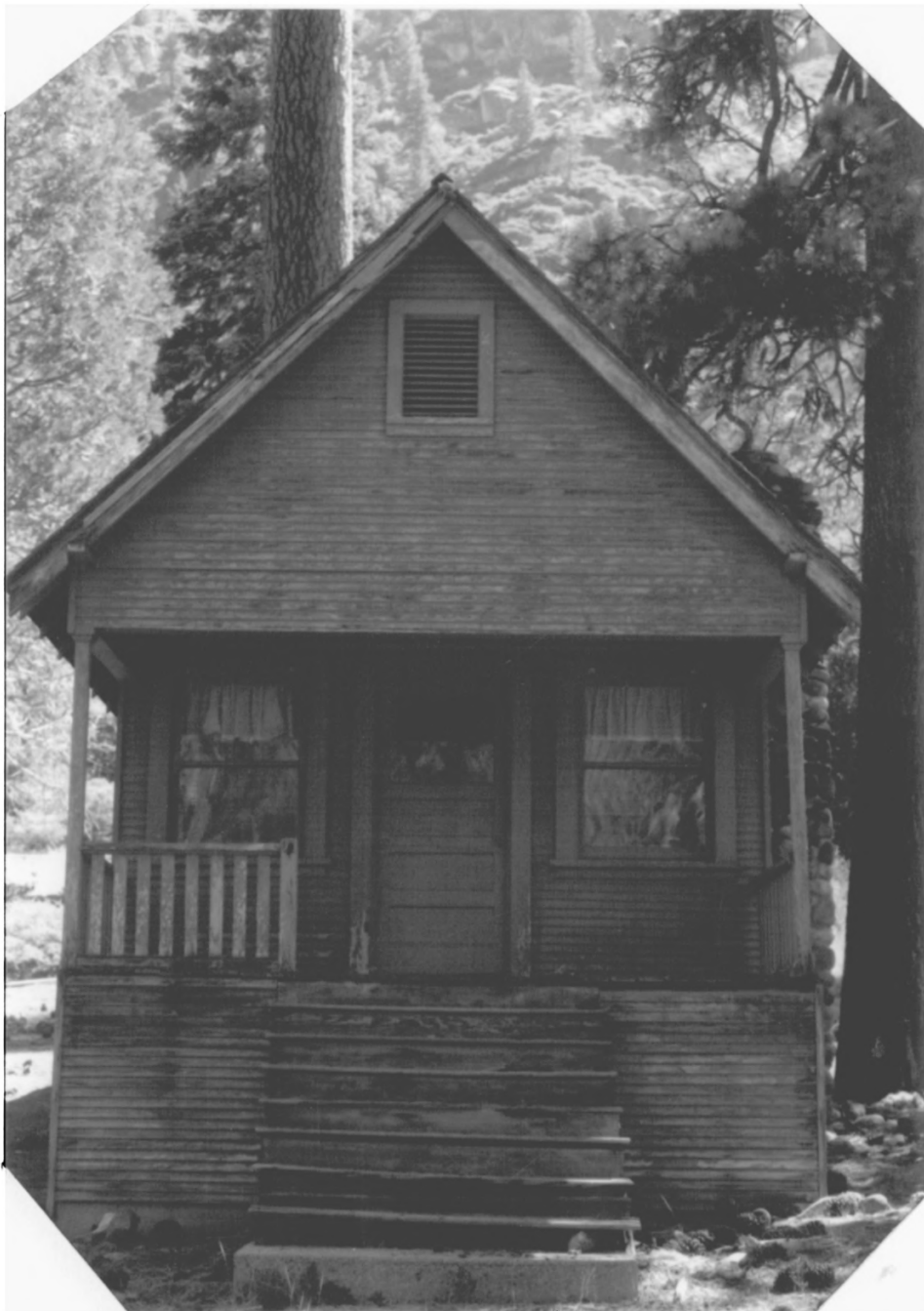
United States Department of the Interior
National Park Service

National Register Of Historic Places
Continuation Sheet

Section number: Photographs Page: 4

Baker Station
Tuolumne County, CA

4



Social Hall

United States Department of the Interior
National Park Service

National Register Of Historic Places Continuation Sheet

Section number: Photographs Page: 5

Baker Station
Tuolumne County, CA

5



Worker's Cabin

United States Department of the Interior
National Park Service

National Register Of Historic Places Continuation Sheet

Section number: Photographs Page: 6

Baker Station
Tuolumne County, CA
6



Dining Hall

United States Department of the Interior
National Park Service

National Register Of Historic Places Continuation Sheet

Section number: Photographs Page: 7

Baker Station
Tuolumne County, CA
7



Foreman's Cabin

United States Department of the Interior
National Park Service

National Register Of Historic Places
Continuation Sheet

Section number: Photographs Page: 8

Baker Station
Tuolumne County, CA
8



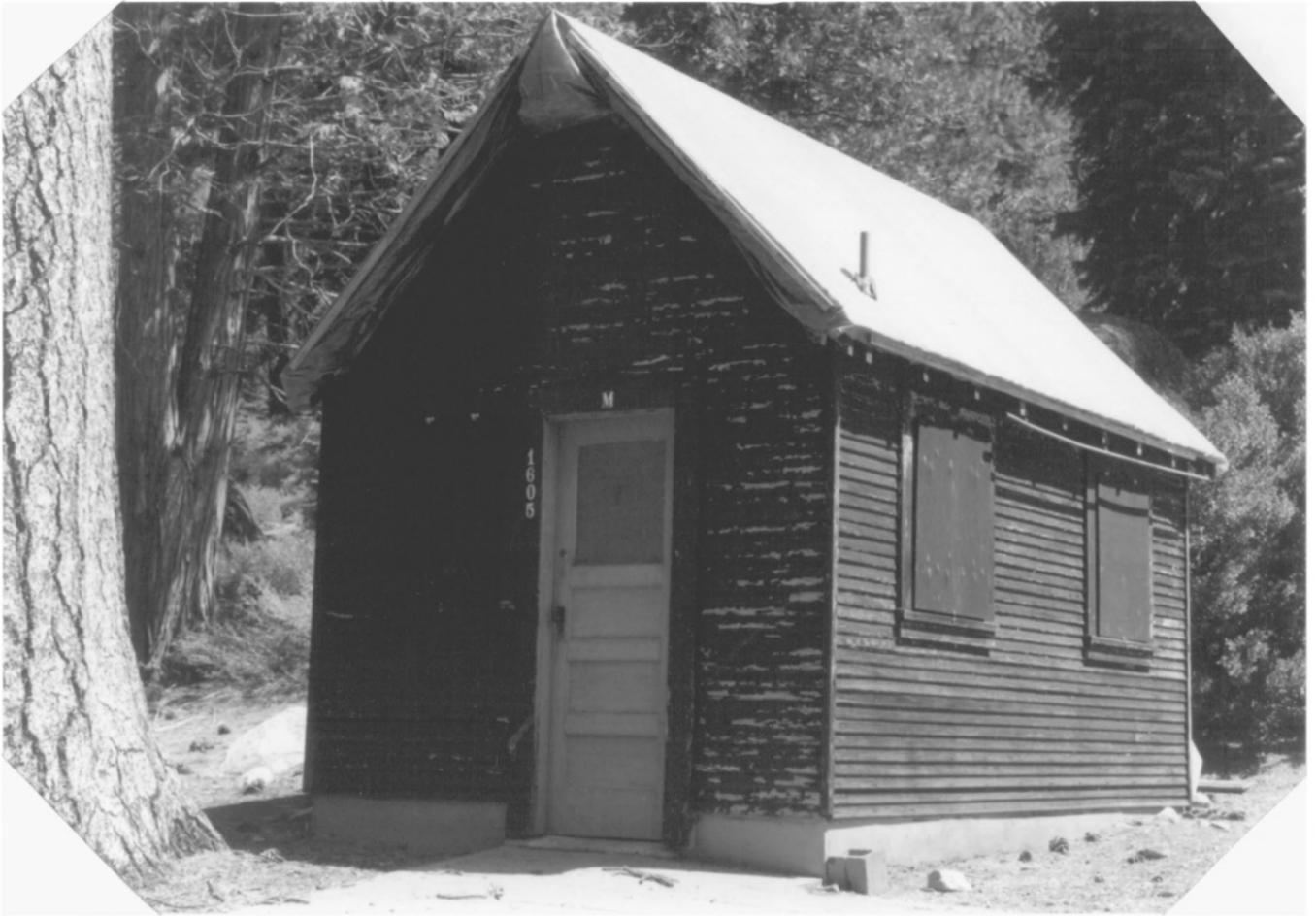
Superintendent's Cabin

United States Department of the Interior
National Park Service

National Register Of Historic Places Continuation Sheet

Section number: Photographs Page: 9

Baker Station
Tuolumne County, CA
9



Men's Bath House

United States Department of the Interior
National Park Service

National Register Of Historic Places
Continuation Sheet

Section number: Photographs Page: 10

Baker Station
Tuolumne County, CA
10



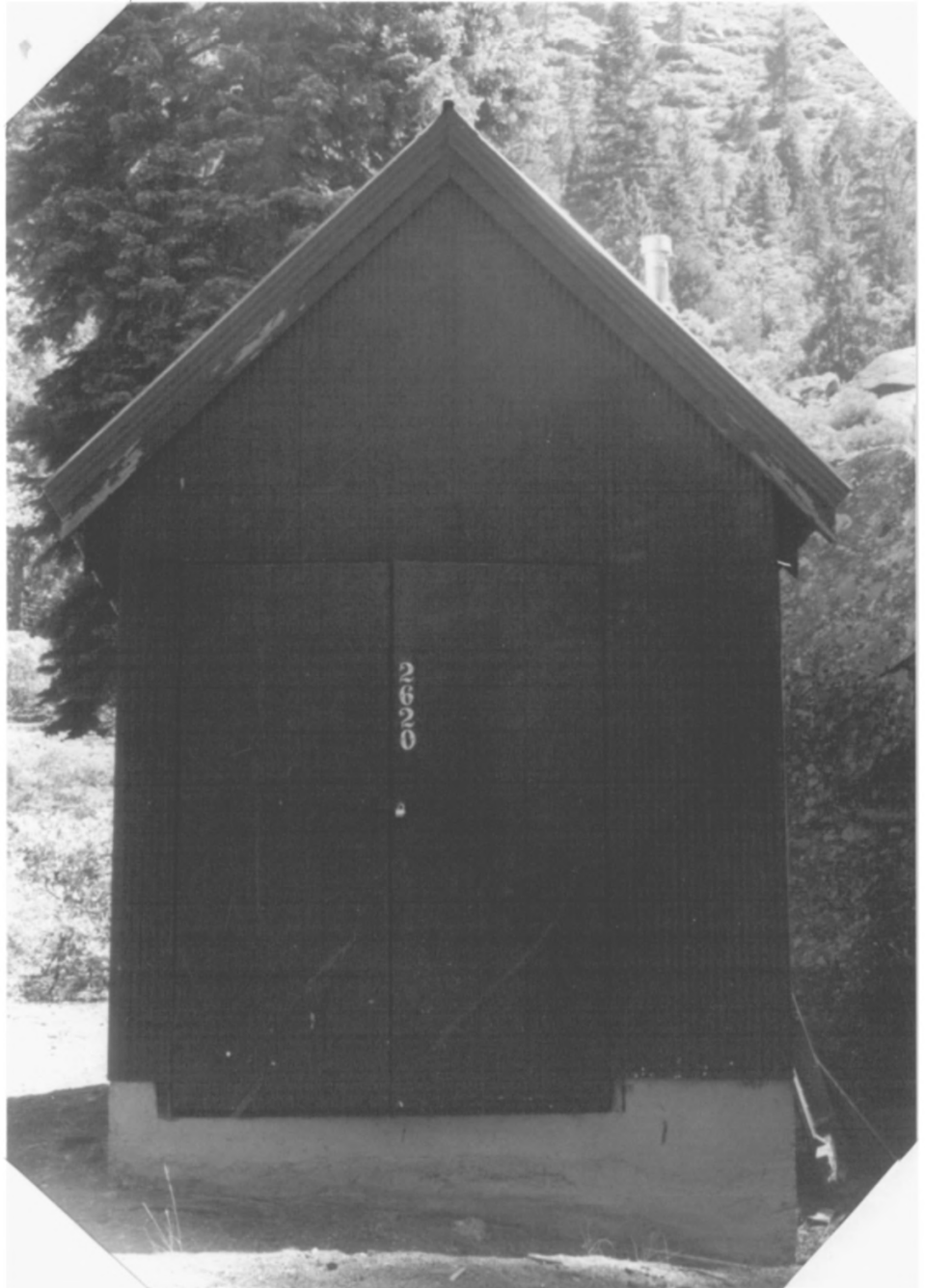
Women's Bath House

United States Department of the Interior
National Park Service

National Register Of Historic Places Continuation Sheet

Section number: Photographs Page: 11

Baker Station
Tuolumne County, CA
11



Hot Water Building

United States Department of the Interior
National Park Service

National Register Of Historic Places Continuation Sheet

Section number: Photographs Page: 12

Baker Station
Tuolumne County, CA
12



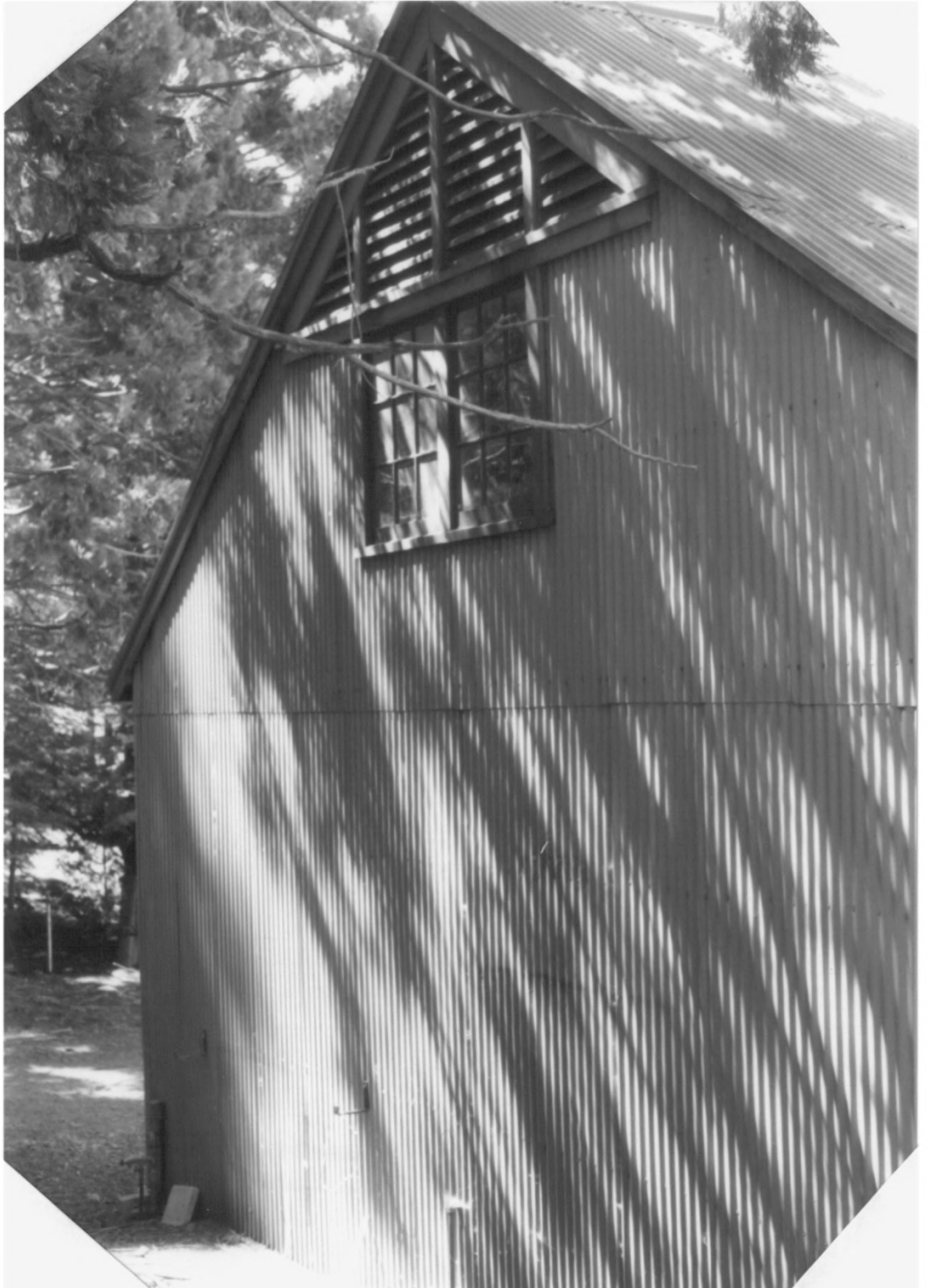
Truck Shed, front view

**United States Department of the Interior
National Park Service**

**National Register Of Historic Places
Continuation Sheet**

Section number: Photographs Page: 13

**Baker Station
Tuolumne County, CA
13**



Truck Shed, side/gable view.

United States Department of the Interior
National Park Service

National Register Of Historic Places Continuation Sheet

Section number: Photographs Page: 14

Baker Station
Tuolumne County, CA
14



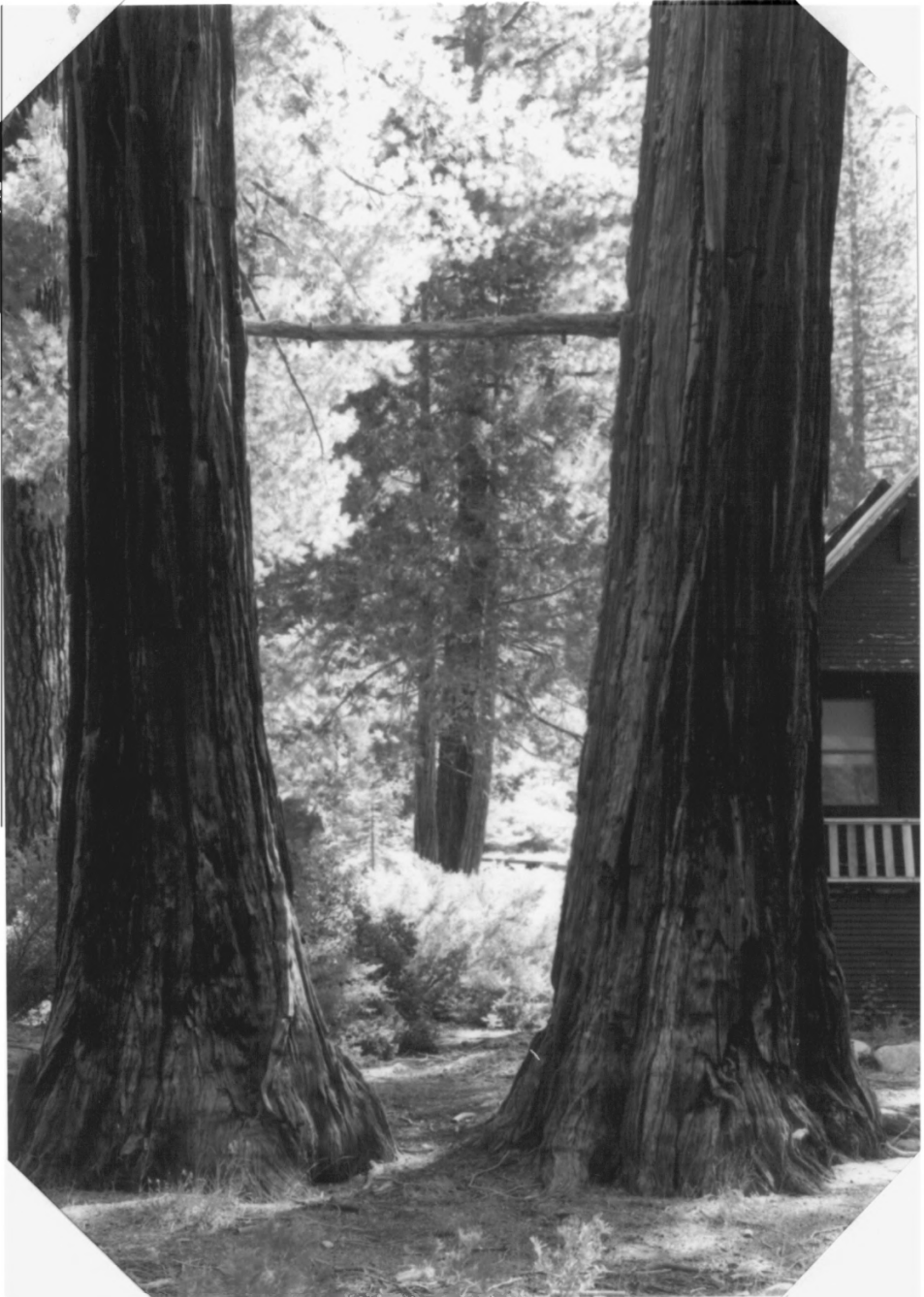
Blacksmith/Generator House

**United States Department of the Interior
National Park Service**

**National Register Of Historic Places
Continuation Sheet**

Section number: Photographs Page: 15

**Baker Station
Tuolumne County, CA
15**



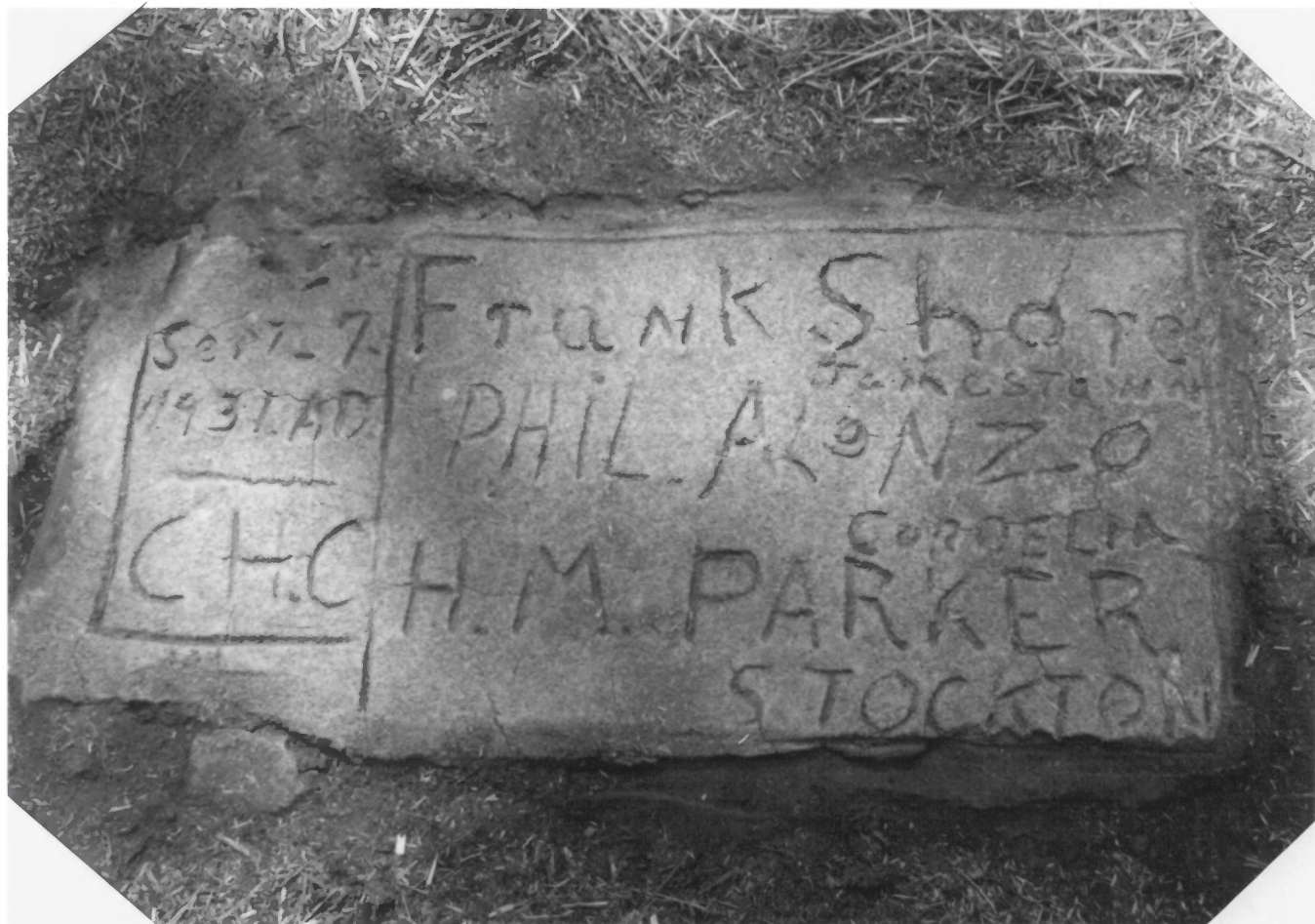
Molly's Swing

United States Department of the Interior
National Park Service

National Register Of Historic Places
Continuation Sheet

Section number: Photographs Page: 16

Baker Station
Tuolumne County, CA
16



California Highway Commission Marker

United States Department of the Interior
National Park Service

National Register Of Historic Places
Continuation Sheet

Section number: Photographs Page: 17 (of 17)

Baker Station
Tuolumne County, CA
17



Overview of Baker Station residential area. From closest to furthest, buildings are: foreman's cabin (superintendent's cabin is out of view), dining hall, worker's cabin, social hall, and bunkhouse. Molly's swing is between the large cedar trees, in the foreground.