



GATEHOUSE, RESERVOIR #2

PORTLAND, MULTNOMAH, OREGON

GEORGANNE DUNN

OCTOBER 3, 1989

1829 NW LOVEJOY #212

PORTLAND, OR 97210

SOUTH ELEVATION, FROM S.E. DIVISION ST.

1 OF 8



GATEHOUSE, RESERVOIR #2
PORTLAND, MULTNOMAH, OREGON

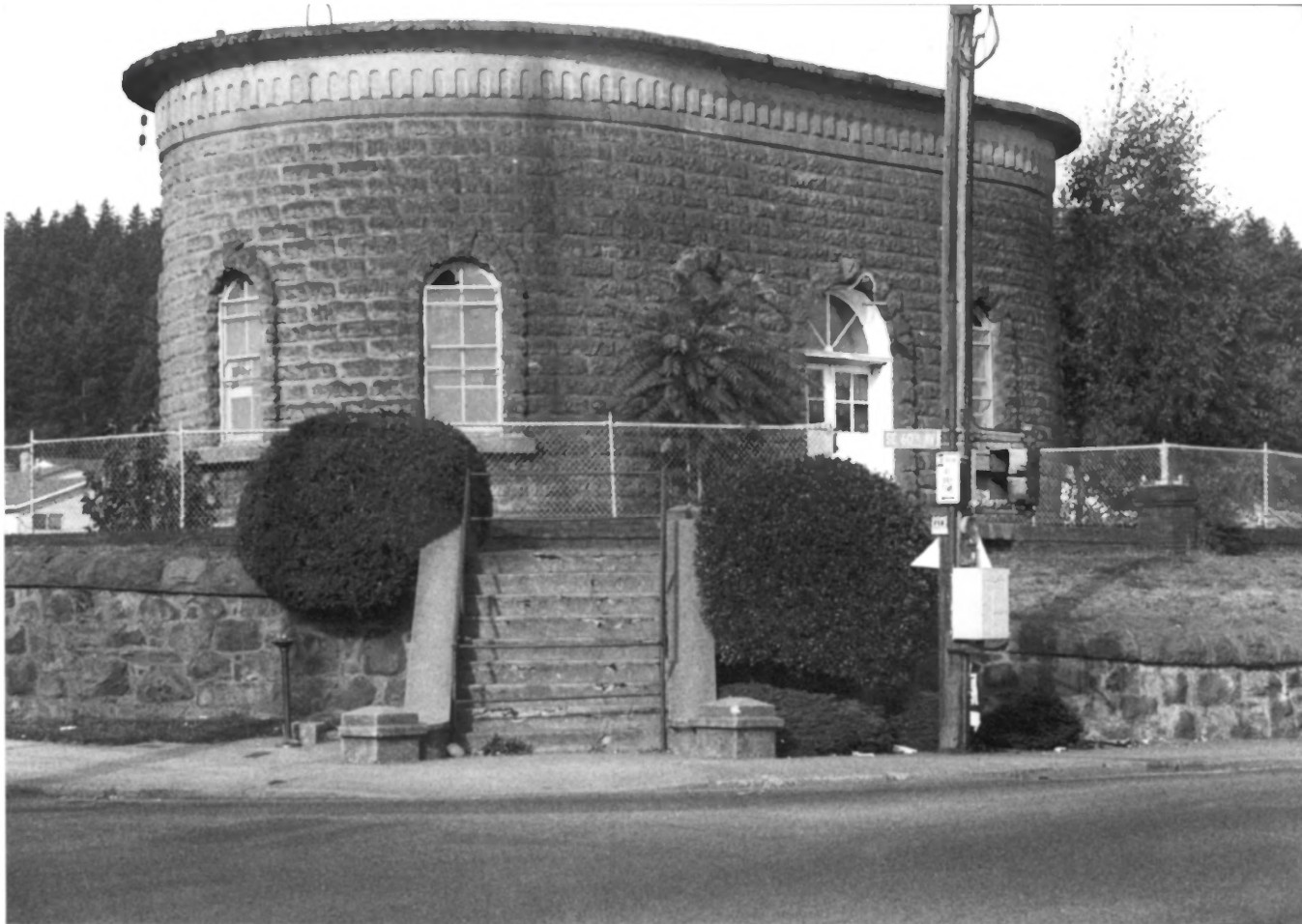
GEORGANNE DUNN

OCTOBER 3, 1989

1829 NW LOVEJOY #212

PORTLAND, OR 97210

LOOKING SOUTHWEST FROM SE DIVISION ST.
2 OF 8



GATEHOUSE, RESERVOIR #2
PORTLAND, MULTNOMAH, OREGON
GEORGANNE DUNN

OCTOBER 3, 1989

1829 NW LOVEJOY #212
PORTLAND; OR 97210

VIEW FROM INTERSECTION OF SE 60TH & DIVISION
30F8



GATEHOUSE, RESERVOIR #2
PORTLAND, MULTNOMAH, OREGON
OCTOBER 3, 1989
1829 NW LOVEJOY # 212
PORTLAND, OR 97210
NORTH ELEVATION
4 OF 8



GATEHOUSE, RESERVOIR #12
PORTLAND, MULTNOMAH, OREGON
OCTOBER. 3, 1989
1829 NW LOVEJOY #212
PORTLAND, OR 97210
DOOR, SOUTH ELEVATION
5 OF 8.



GATEHOUSE, RESERVOIR #2

PORTLAND, MULTNOMAH, OREGON

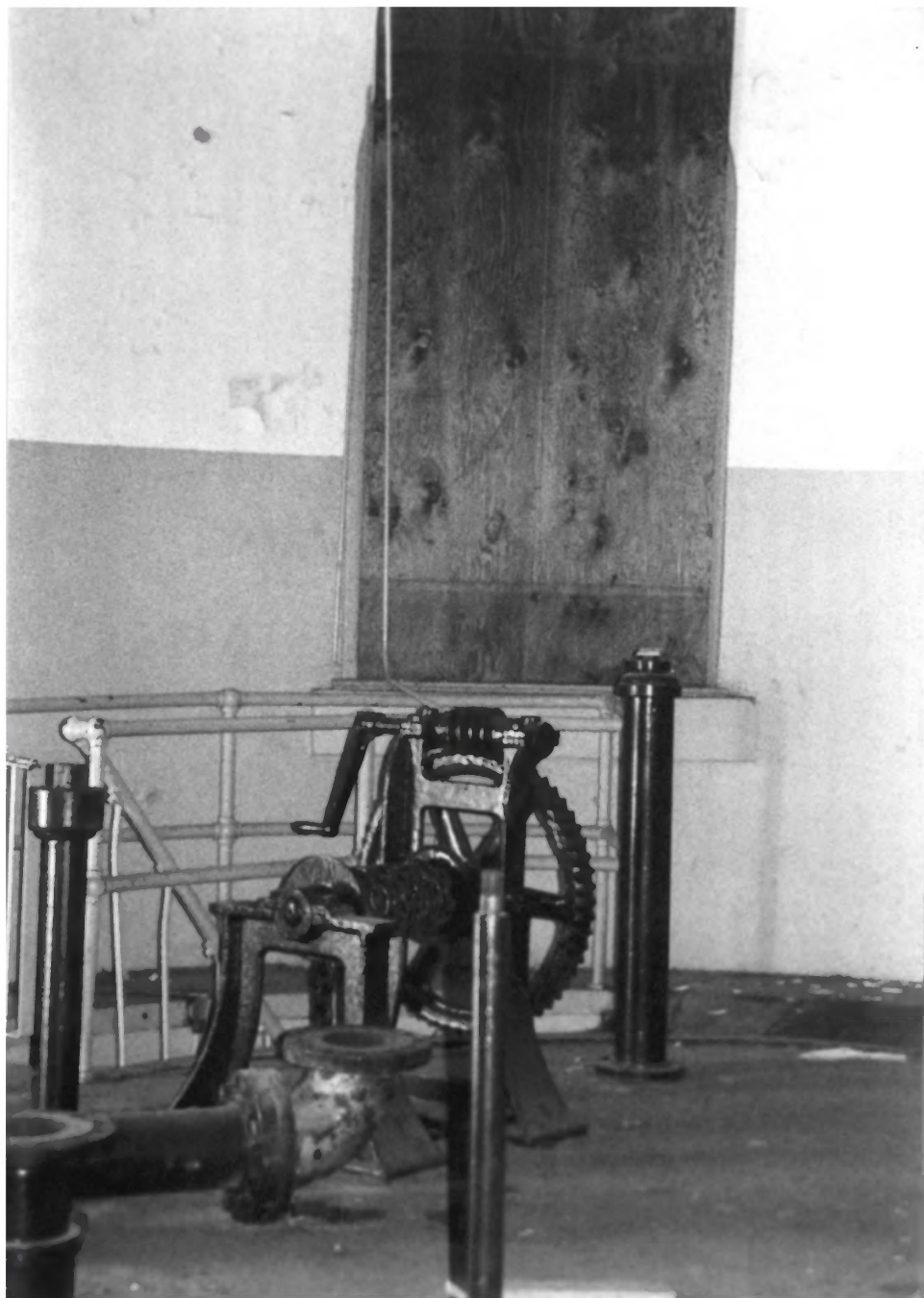
OCTOBER 3, 1989

1829 NW LOVEJOY #1212

PORTLAND, OR 97210

INTERIOR, VIEW OF STAIR TO LOWER LEVEL

6 OF 8



GATE HOUSE, RESERVOIR #2

PORTLAND, MULTNOMAH, OREGON

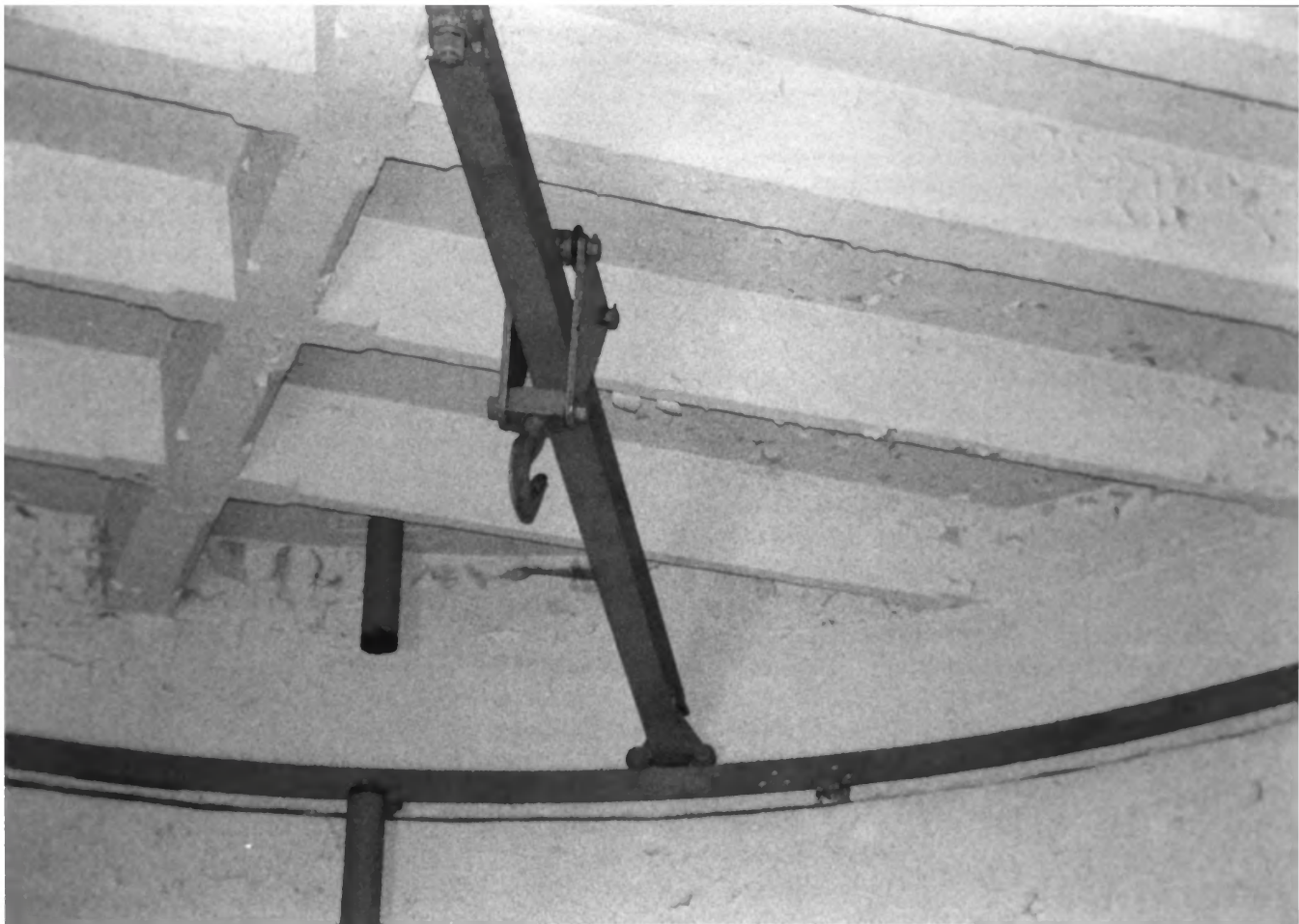
OCTOBER 3, 1989

1829 NW LOVEJOY #212

PORTLAND, OREGON 97210

INTERIOR, VIEW OF WINCH

70F8.



GATEHOUSE, RESERVOIR #2
PORTLAND, MULTNOMAH, OREGON
OCTOBER, 3 1989

1829 NW LOVEJOY #212

PORTLAND, OR 97210

INTERIOR, VIEW OF OVERHEAD BRIDGE RAIL CRANE

8 OF 8.