

United States Department of the Interior  
National Park Service

# National Register of Historic Places Continuation Sheet

Section number \_\_\_\_\_ Page \_\_\_\_\_

---

First Baptist Church Yamhill County OREGON 79002151  
*Dayton MRA (AD)*

ADDITIONAL DOCUMENTATION APPROVED

 3/8/94

United States Department of the Interior  
National Park ServiceNational Register of Historic Places  
Continuation SheetSection number 8 Page 2FIRST BAPTIST CHURCH  
Third and Main Streets  
Dayton  
Yamhill County, Oregon

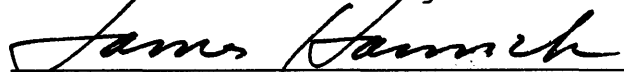
NRIS NO: 79002151

Listing date: 10-16-79

The purpose of this continuation sheet is to add a secondary date of significance [1939] to documentation for the First Baptist Church in order to better reflect the 1987 Multiple Resource Area nomination, *Historically and Architecturally Significant Properties in Dayton, Oregon*. The MRA recognized four historic periods of development in the community between 1848 and 1936.

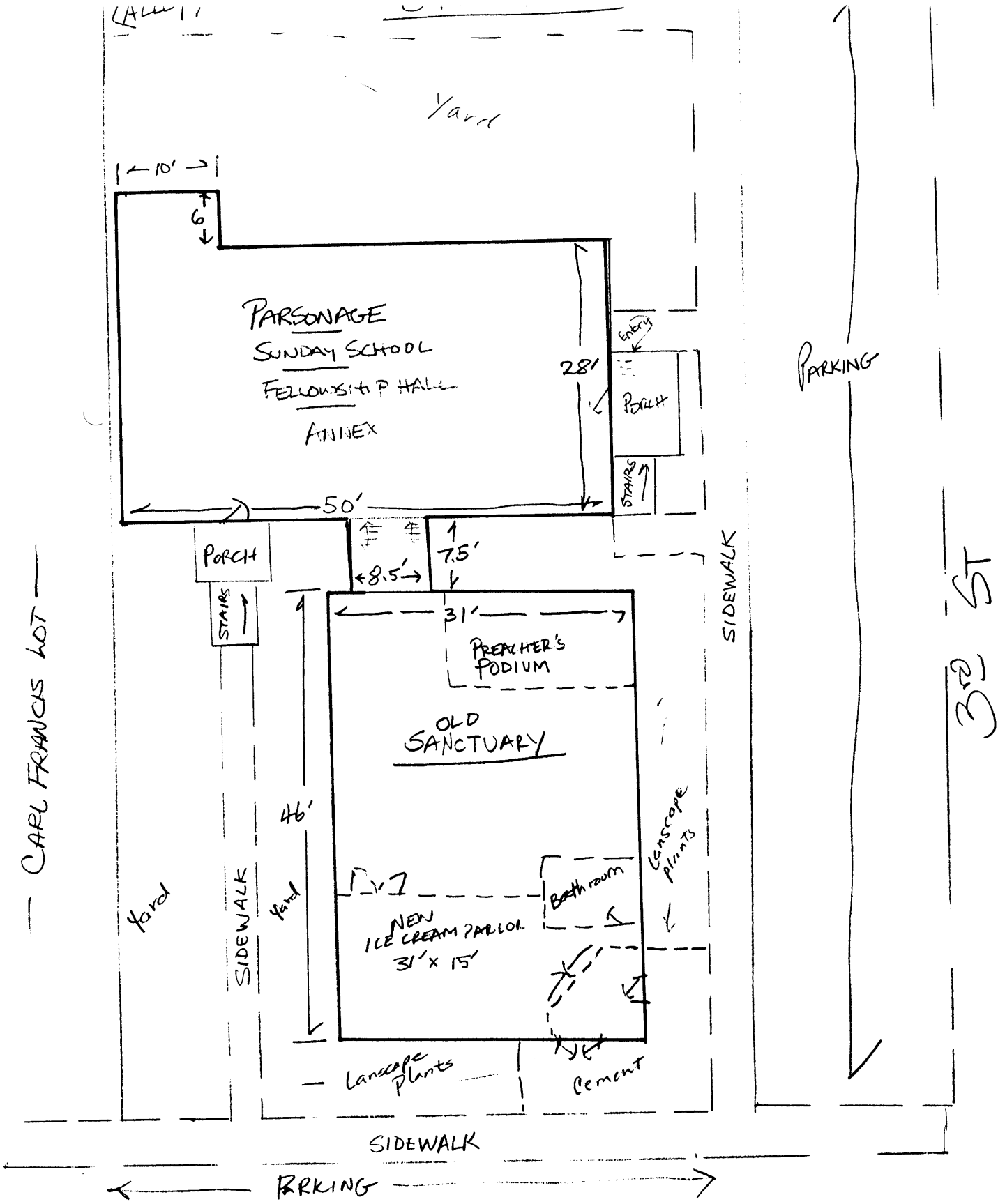
In 1939, the First Baptist Church congregation constructed a Sunday School, attached by a breezeway at a right angle to the rear face of the 1886 brick volume. The single-story annex of wood construction on a partially daylighted basement story measures 28 x 50 feet in footprint, is clad with shiplap siding and has a shingled gable roof of medium pitch with close verges. The building is entirely subordinate to the older volume because its site is a slightly sloping grade. The building exterior is simply finished with plain corner boards and surrounds for doors and double-hung, hopper-style windows. A shed roof on posts shelters the entrances at the east end, which fronts on Third Street. The upper door is reached by a raised porch deck and stairway parallel with the facade. The basement door is achieved by a concrete stairwell. A third entrance is located in the south elevation, at the westerly end, which is set back from, but parallel with the facade of the original volume.

The Sunday School annex conveys the type of simple, economical construction which epitomized small community buildings in the Depression era. Historically, it housed a fellowship hall, kitchen, lavatories, wood furnace room and a classroom in the basement, and classrooms and offices in the main story. For more than 50 years, the Sunday School attachment has contributed to the substantial presence of the Baptist congregation at a main intersection at the northeast corner of the town square. Because of its breezeway form of attachment, the Sunday School is not registered as a separately contributing feature. However, because it represents 20th century evolutionary development of church facilities, it now may be considered a contributing attachment to the original volume. [Please see attachments]



Deputy State Historic Preservation Officer

June 27, 1994



CARL FRANCIS LOT

YARD

YARD

PARSONAGE  
SUNDAY SCHOOL  
FELLOWSHIP HALL  
ANNEX

28'

STAIRS

BATH

STAIRS

PORCH

STAIRS

8.5'

7.5'

31'

PREACHER'S  
PODIUM

OLD  
SANCTUARY

46'

YARD

SIDEWALK

YARD

NEW  
ICE CREAM PARLOR  
31' x 15'

BATH ROOM

LANDSCAPE  
PLANTS

LANDSCAPE  
PLANTS

CEMENT

SIDEWALK

SIDEWALK

PARKING

PARKING

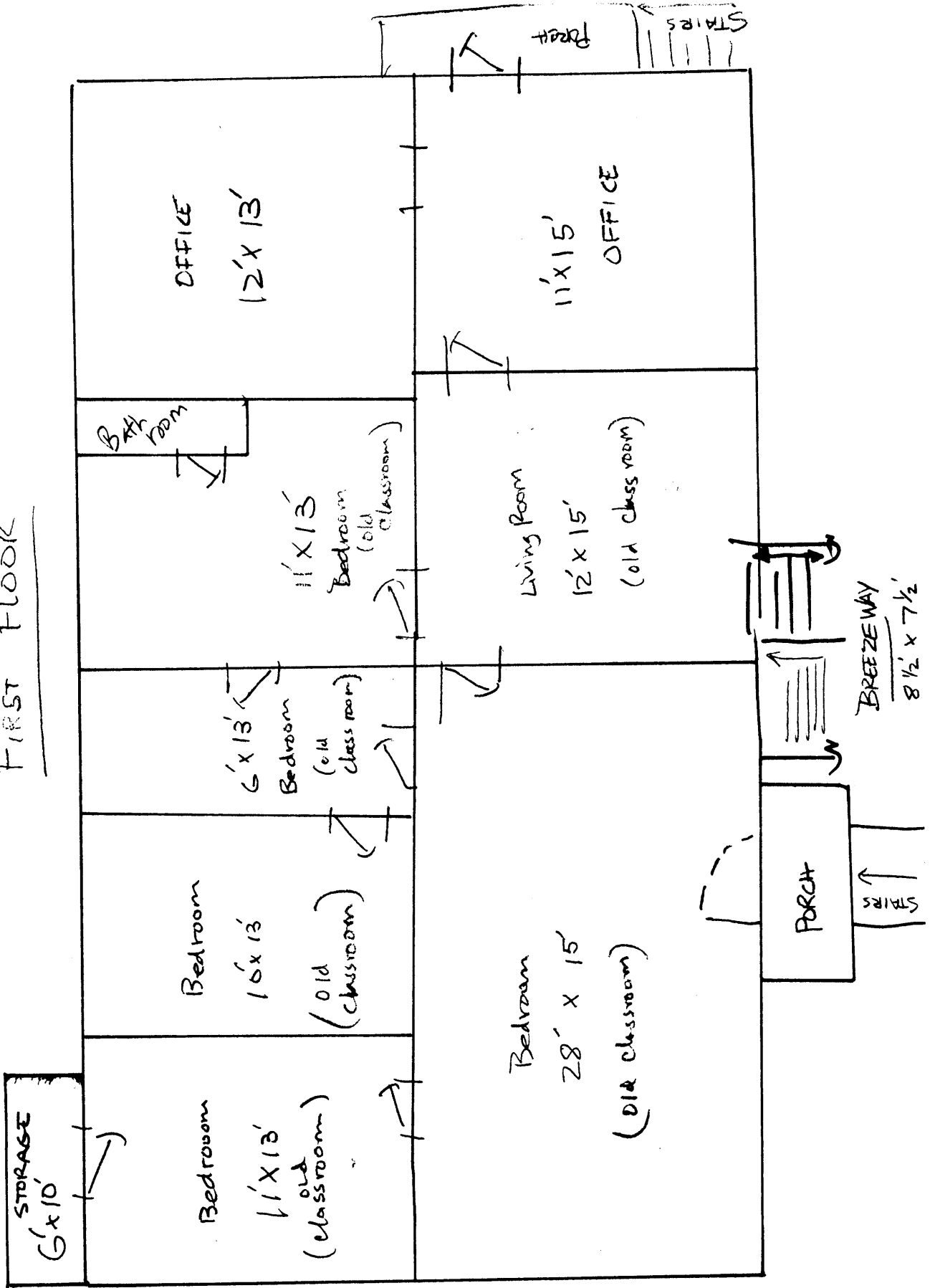
3RD ST

MAIN ST.

FIRST BAPTIST CHURCH  
OF DAYTON

FIRST BAPTIST CHURCH OF DAYTON

ANNEX  
FIRST FLOOR



FIRST BAPTIST CHURCH OF DAYTON  
ANNEX  
BASEMENT

SCALE 1" = 5'

