



Photo #1

(3) HACHIDATE YU ~~BAR~~ AT THE PANAMA HOTEL
SEATTLE, WA

North + West Facades, also showing the N-P Hotel at right

Photographer: John Stanets, Sep 2-26 1915.

95-7.16-3b



Photograph # 2



HASHIDATE YU ~~BALCONY~~ AT THE PANAMA HOTEL
SEATTLE, WA

Close View of the North and West Facades.

Photographer, John Starnets, September 1915.

95-7.16-16

ESTD - 1900
GENERAL CONTRACTORS
Chief Clerk FRANK CO. 4871 1/2

Cascade Co.
1025 1/2
Vancouver, B.C.

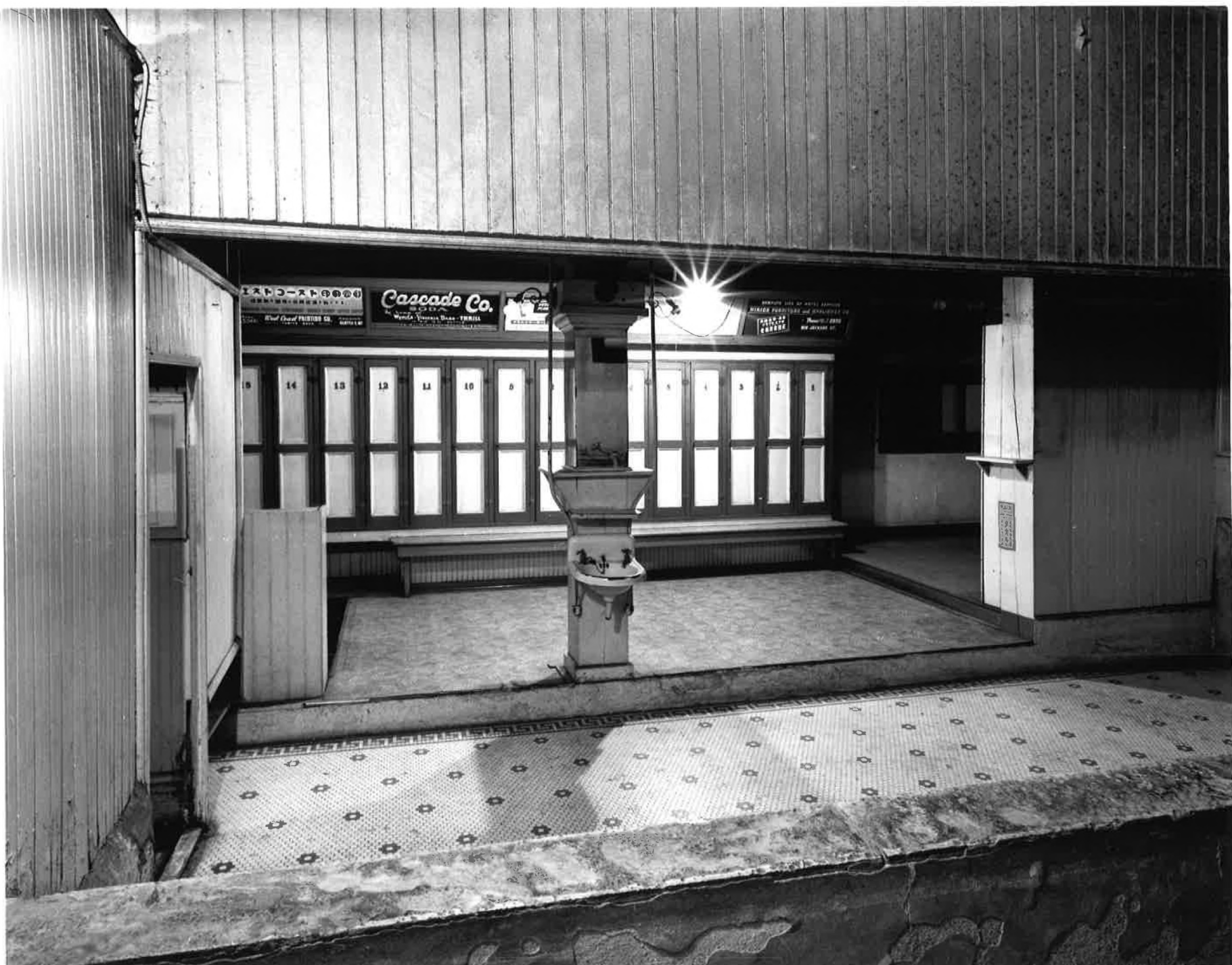
ESTD 1900

BRIDGE AND ROADS
SPECIAL CONTRACTS AND ESTIMATES
1025 1/2
VANCOUVER, B.C.

18 14 13 12 11 10 8 7 6 5 4 3 2 1

1025 1/2
VANCOUVER, B.C.

1025 1/2
VANCOUVER, B.C.



Photograph #3

⑤ HASHIDATE YU ~~PANTHOUSE~~ AT THE PANAMA HOTEL
SEATTLE, WA

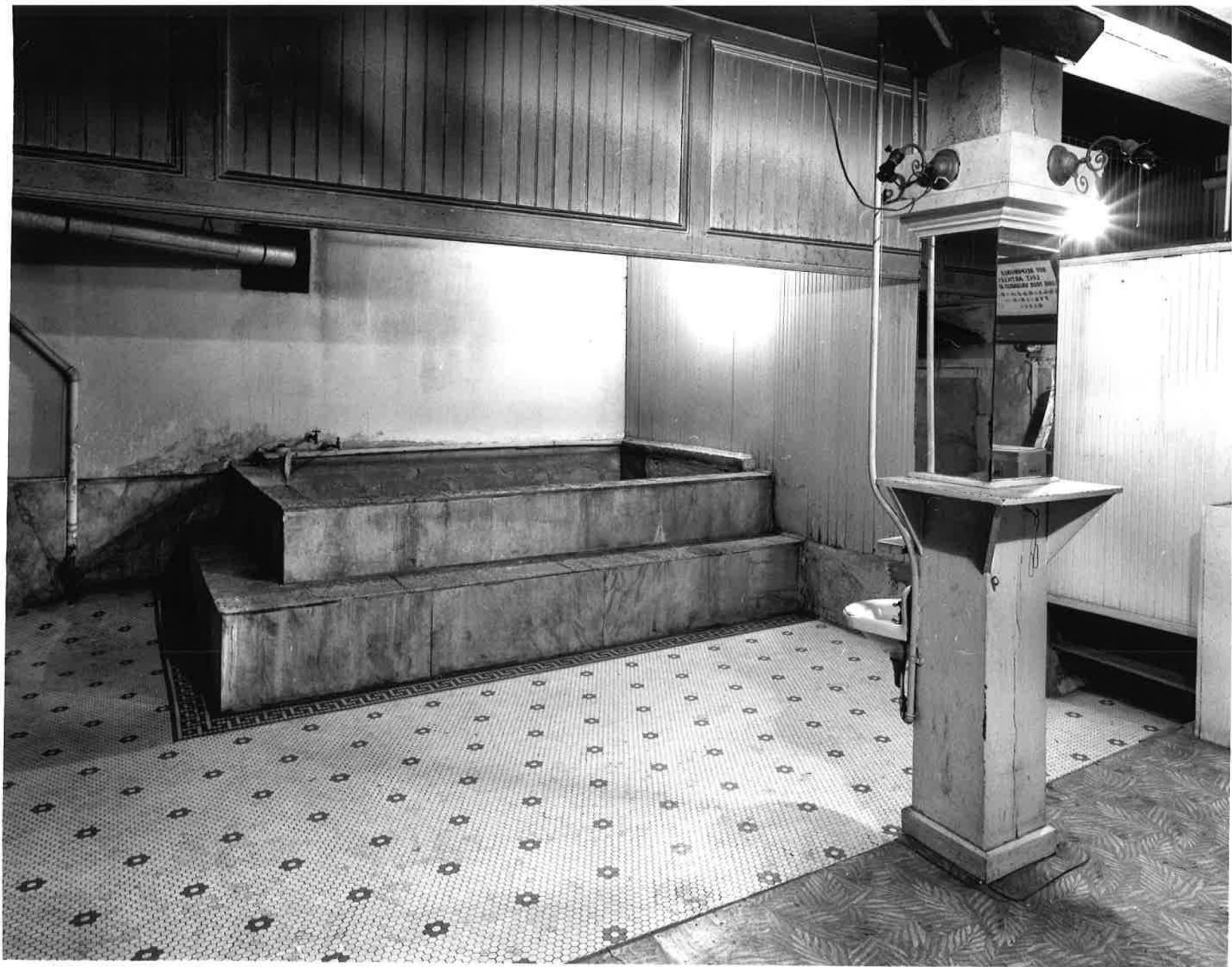
Basement Interior, Showing Men's Changing Area, From Edge of

Photographer: John Starrett, September 1995 ^{Mens Bath.}

neg. 6

-86

1995



Photograph #4

(5) HASTIDATE YU ~~RESTAURANT~~ AT THE PANAMA HOTEL
SEATTLE, WA

Basement Interior, showing Men's Bath.

Photographer: John Starnes, September 1995



Photograph #5

(4) HASHIDATE YU BATHHOUSE AT THE PANAMA HOTEL
SEATTLE, WA

Basement of Hotel, showing women's changing room,

Photographed by John Starnes, Sept 1935

From E. J. and
Women's Bath.

9-13-95 #2 wsg



Photograph # 6



HASHIDATE YU ~~XXXXXXXXXX~~ AT THE PANAMA HOTEL
SEATTLE, WA

Basement Interior, Showing Women's Bath

Photographer: John Starnets, Sept. 1915

PANAMA HOTEL

—Women's bath

9-13-94 #2

photo: John Starnets



MAYNARDS PLAT. B-42 - L-1

601-41 - MAIN ST

PANAMA HOTEL

PACIFIC TRADING CO.

PANAMA HOTEL

Phylogeny

- * A sequence of ~~characters~~ characters are used to determine the relationships between taxa.
- States of characters are used to determine the relationships between taxa.
- Phylogenetic trees are constructed based on the relationships between taxa.



