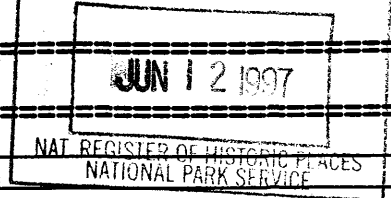


United States Department of the Interior National Park Service
NATIONAL REGISTER OF HISTORIC PLACES REGISTRATION FORM

1787

1. Name of Property WAR MEMORIAL BUILDING



historic name: _____
other name/site number: _____

2. Location

street & number: 501 N. Main Street not for publication: N/A
city/town: New Martinsville vicinity: N/A
state: WV county: Wetzel code: 103 zip code: 26155

3. State/Federal Agency Certification

As the designated authority under the National Historic Preservation Act, as amended, I hereby certify that this x nomination request for determination of eligibility meets the documentation standards for registering properties in the National Register of Historic Places and meets the procedural and professional requirements set forth in 36 CFR Part 60. In my opinion, the property x meets does not meet the National Register Criteria. I recommend that this property be considered significant nationally statewide x locally.

(See continuation sheet.)

William C. Lerner 6/4/97
Signature of Certifying Official date

State or Federal agency and bureau Date

In my opinion, the property meets does not meet the National Register criteria. (See continuation sheet for additional comments.)

Signature of Certifying Official/Title Date

State or Federal agency and bureau

4. National Park Service Certification

I, hereby certify that this property is: _____ Date
Signature of Keeper of Action

- entered in the National Register
 See continuation sheet.
- determined eligible for the National Register
 See continuation sheet.
- determined not eligible for the National Register
- removed from the National Register

Edson B. Beall 7/9/97

other (explain): _____

War Memorial Building
Name of Property

Wetzel County, WV
County and State

=====

5. Classification

=====

Ownership of Property:
(Check as many boxes as apply)

Category of Property
(Check only one box)

- private
- public-local
- public-State
- public-Federal

- building(s)
- district
- site
- structure
- object

Number of Resources within Property
(Do not include previously listed resources in the count.)

Contributing	Noncontributing	
1		buildings
		sites
		structures
		objects
1	0	TOTAL

Name of related multiple property listing
(Enter "N/A" if property is not part of a multiple property listing.)

N/A

Number of contributing resources previously listed in the National Register 0

=====

6. Function or Use

=====

Historic Functions
(Enter categories from instructions)

Current Functions
(Enter categories from instructions)

SOCIAL: Meeting Hall

SOCIAL: Meeting Hall

=====

7. Description

=====

Architectural Classification:
(Enter categories from instructions)

Materials
(Enter categories from instructions)

LATE 19TH AND 20TH CENTURY
REVIVALS: Neoclassical

Foundation Concrete
Walls Brick
Roof Urethane Foam
Other Limestone details

Narrative Description
(Describe the historic and current condition of the property on one or more continuation sheets.)

War Memorial Building
Name of Property

Wetzel County, WV
County and State

=====

8. Statement of Significance

=====

Applicable National Register Criteria

(Mark "X" in one or more boxes for the criteria qualifying the property for National Register listing.)

- A** Property is associated with events that have made a significant contribution to the broad patterns of our history.
- B** Property is associated with the lives of persons significant in our past.
- C** Property embodies the distinctive characteristics of a type, period, or method of construction or represents the work of a master, or possesses high artistic values, or represents a significant and distinguishable entity whose components lack individual distinction.
- D** Property has yielded, or is likely to yield, information important in prehistory or history.

Criteria Considerations

(Mark "X" in all the boxes that apply.)

Property is:

- A** owned by a religious institution or used for religious purposes.
- B** removed from its original location.
- C** a birthplace or grave.
- D** a cemetery.
- E** a reconstructed building, object, or structure.
- F** a commemorative property.
- G** less than 50 years of age or achieved significance within the past 50 years.

Areas of Significance

(Enter categories from instructions)

MILITARY
SOCIAL
ARCHITECTURE

Period of Significance

1929-1945

War Memorial Building
Name of Property

Wetzel County, WV
County and State

Significant Dates
1929

Significant Person
(Complete if Criterion B is marked above)
N/A

Cultural Affiliation
N/A

Architect/Builder
Giesey, Millard F., architect
Dayton, J.U., builder

Narrative Statement of Significance
(Explain the significance of the property on one or more continuation sheets.)

=====

9. Major Bibliographical References

=====

Bibliography
(Cite the books, articles, and other sources used in preparing this form on one or more continuation sheets.)

Previous documentation on file (NPS):

- preliminary determination of individual listing (36 CFR 67) has been requested.
- previously listed in the National Register
- previously determined eligible by the National Register
- designated a National Historic Landmark
- recorded by Historic American Buildings Survey # _____
- recorded by Historic American Engineering Record # _____

Primary location of additional data:

- State Historic Preservation Office
- Other State agency
- Federal agency
- Local government
- University
- Other

Name of Repository: _____

War Memorial Building
Name of Property

Wetzel County, WV
County and State

=====

10. Geographical Data

=====

Acreage of Property: Less than one acre

UTM References (Place additional UTM references on a continuation sheet.)

17 511160 4388600 New Martinsville Quad Map
Zone Easting Northing

Verbal Boundary Description

(Describe the boundaries of the property on a continuation sheet.)

Boundary Justification

(Explain why the boundaries were selected on a continuation sheet.)

=====

11. Form Prepared By

=====

Name/Title: Katherine M. Jourdan

Organization: WV SHPO Date: 24 March 1997

Street & Number: 1900 Kanawha Blvd East Telephone: 304/558-0220

City or Town: Charleston State: WV Zip: 25305-0300

=====

Additional Documentation

=====

Submit the following items with the completed form:

Continuation Sheets

Maps

A **USGS map** (7.5 or 15 minute series) indicating the property's location.

A **Sketch map** for historic districts and properties having large acreage or numerous resources.

Photographs

Representative **black and white photographs** of the property.

Additional Items

(Check with the SHPO or FPO for any additional items)

War Memorial Building
Name of Property

Wetzel County, WV
County and State

=====
Property Owner
=====

(Complete this item at the request of SHPO or FPO.)

Name: Wetzel County Commissioners

Street & Number: P.O. Box 156 Telephone: _____

City or Town: New Martinsville State: WV Zip: 26155
=====

Paperwork Reduction Act Statement: This information is being collected for applications to the National Register of Historic Places to nominate properties for listing or determine eligibility for listing, to list properties, and to amend existing listings. Response to this request is required to obtain a benefit in accordance with the National Historic Preservation Act, as amended (16 U.S.C. 470 et seq.).

Estimated Burden Statement: Public reporting burden for this form is estimated to average 18.1 hours per response including time for reviewing instructions, gathering and maintaining data, and completing and reviewing the form. Direct comments regarding this burden estimate or any aspect of this form to the Chief Administrative Services Division, National Park Service, P.O. Box 37127, Washington, DC 20013-7127; and the Office of Management and Budget, Paperwork Reductions Projects (1024-0018), Washington, DC 20503.

United States Department of the Interior
National Park Service

NATIONAL REGISTER OF HISTORIC PLACES
CONTINUATION SHEET

War Memorial Building Wetzel County, WV
Section number 7 Page 2

The War Memorial Building is located on the corner of Main and Virginia Street, north of New Martinsville's downtown business section. The corner of the lot has a 9 millimeter World War II cannon, and there is a granite marker for Korean veterans, as well as a flagpole. A solid presence in the residential district, the building is the design of noted Wheeling architect, Millard F. Gieseey.

Constructed in 1929, the two-story buff colored wire brick building has Neoclassical elements with a stone entry, keystone lintels, and side round arch windows. The memorial building has an elevated first floor with grand steps leading to the center paired wooden doors. The entry has a limestone molding with "WAR MEMORIAL" inscribed over the doorway, flanked by small side lights. To each side are paired windows with a multi-light transom in the upper portion of the opening.

The second floor has a elongated center window area of three small double-hung windows, with three upper transom lights. These lights reflect the ribbon windows to each side that have a star muntin pattern. The window openings on both floors are inside two large brick panels formed by a running bond of brick marked at the corners by a small limestone squares. There is also a slight corbeling of patterned brick at the cornice line, dentils, and a running bond at the watertable line.

The lower level is concrete with a multi-light metal window and paired metal doors to each side of the steps. On the southwest corner at the first floor watertable line is a cornerstone with an inscription on two sides - West Side: "ERECTED BY/CITIZENS OF/WETZEL COUNTY &/MARNE POST NO. 28/AMERICAN LEGION"; the South Side reads: "LAID BY/A.F. & A.M./ MAY 30, 1929/BOYD WEES/GRAND MASTER/M.F. GIESEY/ARCHITECT/J.U. DAYTON/ CONTRACTOR"

From the side of the building the slight T-shaped plan is visible. There are four bays near the front facade with double-hung windows under a transom opening. A small double-hung window opening marks a bathroom on the first floor and is repeated on the second floor. The building steps back for the large ballroom on the first floor, and the lower level gymnasium. The ballroom is marked by two large Neoclassical windows with fanlight transoms, and large double-hung windows under a second transom light. A third bay is outlined in brick but has a single double-hung opening with transom. There is a small single window near the rear of the building. The lower level has multi-light metal window openings of various sizes, and a rear entrance door.

The interior has a hallway along the front of the first floor and lower level, and there are corner stairways. Off the lower level hall there are restrooms, storage, and a kitchen area. Center double doors open to the gymnasium, where a wooden platform has steps to each side leading down to a concrete floor. This large space was used as a recreation room for basketball, boxing, and other sports. Wooden benches line the two exterior walls. A rear doorway opens into a maintenance room along the rear of the building.

The first floor hall opens to three small rooms, the center room having the roster of World War I veterans, and curved corner niches. Each of these rooms, plus a hallway to each side of the center room, open onto

United States Department of the Interior
National Park Service

NATIONAL REGISTER OF HISTORIC PLACES
CONTINUATION SHEET

War Memorial Building Wetzel County, WV
Section number 7 Page 3

the ballroom with frosted multi-light doors. This large ballroom has a hardwood floor, and a raised platform along the back wall. On the rear wall is a large metal plaque with the "Wetzel County Roll of Honor" for World War II veterans. Off the ballroom are two small bathrooms in the front corners.

The ballroom was used for a variety of social events and has retained the original materials, including the hanging light fixtures. A small detail is the Dutch half door on the hall entrance to the southwest office which was often used as a coat check room. Behind the ballroom is a long narrow room entered from a southern exterior door. Used by a variety of groups as a meeting room, the room did not allow access to the rest of the building.

The second floor of the building was reserved for Marine Post 28 and the Ladies Auxiliary. The space spans the front section of the building, and has twelve double-hung windows overlooking the interior space of the ballroom. The center section has a large space for a meeting room, with folding panel doors opening for an expanded area. Southwest corner stairs lead to the roof, and the north side has a kitchen, lounge and restroom.

During WWII a small room or shed was constructed on the roof for use by plane spotters over the Ohio River valley. The shed has wood siding, small sliding windows, and a low gable/shed roof.

The design of the War Memorial Building has allowed it to serve as a county community building for many years. The space planning provided for large recreational and social areas, but also met the demands of some needed office space and small meeting rooms.

United States Department of the Interior
National Park Service

NATIONAL REGISTER OF HISTORIC PLACES
CONTINUATION SHEET

War Memorial Building Wetzel County, WV
Section number 8 Page 2

The War Memorial Building is important under Criterion A for its association with Military and Social history in Wetzel County from 1929 to 1945, and for Architecture under Criterion C. The Neoclassical building was designed by Wheeling architect, Millard F. Giesey.

Following the turmoil and loss from World War I, the citizens of Wetzel County desired to establish a lasting and living memorial to the men who served during the war. At the time the State Code under the title of Chapter 18, "Monuments, Tablets and Memorials," provided that the County Court (Commission) could lay a levy for the erection of a memorial upon petition of twenty percent of the county voters; and that such a memorial should be erected at the county seat.

In June 1927, the idea of a memorial was proposed by the New Martinsville Kiwanis Club and the veterans of Marne Post 28 American Legion took on the project. The Post acquired the needed petition and presented it to the County Court. The group also donated two lots, #88 and #89 of the Martin Addition, to the County Commission as a site for the location of the Memorial Building. The location of the two lots was the northeast corner of Main and Virginia Streets. An additional \$12,000 in cash was also donated to the Memorial Fund by Marne Post 28. The Wetzel County Court records for May 19, 1928, state that the "Memorial of the Soldiers, Sailors, and Aviators of the Late World War" was established.

A Memorial Board was begun in 1928 following State Code requirements, and was composed of World War I veterans. They retained Wheeling architect, Millard F. Giesey for the design of the building, and used J.U. Dayton as the builder.

Giesey was a Wheeling native, opening an office in 1886. He had been a partner in the firm Franzheim, Giesey and Faris from roughly 1897-1903, before going into partnership with Fred Faris until 1915. The work of both firms often featured a buff colored brick, which Giesey continued to use when he established his own firm in Wheeling. Known throughout the state for his work, he is recognized for his designs of the Pocahontas County Courthouse (1895); Schmulbach Building (1905), Wheeling; and Towers School (1895), Clarksburg. He passed away in December 1931.

Giesey's design of the building is a simple Neoclassical style, with double steps leading up to a incised stone entrance. The interior has both large public spaces for a variety of social and recreational uses, as well as small meeting rooms and offices.

The cornerstone for the War Memorial Building was dedicated on Memorial Day, May 30, 1929, as a living memorial to the World War I veterans. The facility was available for any group in the county to use for meetings or special events. As a memorial to the Wetzel County veterans of World War I, a room leading into the ballroom has bronze plaques recognizing those who served, and were during lost, during World War I.

A focal point of the building is the ballroom on the first floor, with its hardwood maple floor. This room served the community and county as a location for social events, civic meetings, and business conventions. It was the location for dinners and dances by the graduating classes of

United States Department of the Interior
National Park Service

NATIONAL REGISTER OF HISTORIC PLACES
CONTINUATION SHEET

War Memorial Building Wetzel County, WV
Section number 8 Page 3

the county's Magnolia High School, as well as formal dances held by the local civic groups at Christmas.

Many other organizations took advantage of the Memorial Building. Special rooms on the first floor, behind the ballroom, were occupied by local Boy Scout Troops, and Sea Explorers. Sewing circles used the lower level during the Depression years. The gymnasium provided an excellent location for an area youth center organized by area churches, and as a site for the then popular Golden Gloves boxing tournaments.

The second floor of the building was reserved "for the use and control" by the Marne Post 28 and its Ladies Auxiliary. While it mainly served as a meeting room for these organizations, it was available to civic groups as well. A kitchen on the same floor was utilized for food preparation and catering by the Ladies Auxiliary.

With the advent of World War II, the building was used for various national agencies and activities. During the period of 1941-1945 the building was occupied by the Selective Service Board, the county War Rations Board and the Red Cross. Service recruiter offices were headquartered here, and the first bus load of Wetzel County draftees for World War II departed from the War Memorial Building.

For the war effort, the local Civil Defense constructed a small clapboard building or penthouse on the roof. This was used as the headquarters for the Civil Defense plane spotters, who nightly stood vigil watching the skies over the Ohio River in case there was an invasion. This defense system was used by many of the small river towns along the industrial area of the Ohio River.

In 1943, the Defense Plan Corporation, in conjunction with PPG Industries, built a chemical manufacturing facility nine miles north of New Martinsville along the Ohio River. This facility's social and business activities for employees centered around the War Memorial Building.

Following the war, the memorial continued to be a center for social activities in the county. After the Korean Conflict the name was shortened to Memorial Building as it now serves as a memorial to Wetzel County veterans of all wars.

Wetzel County chose to remember its World War I veterans with a memorial that could have a continual benefit for county citizens. Funded by a county levy and with donations, the building has been available for use by local citizens. Heavily used for social activities, meetings, and offices during WW II, the building continues to provide space for public functions and houses the WV University Extension Service.

United States Department of the Interior
National Park Service

NATIONAL REGISTER OF HISTORIC PLACES
CONTINUATION SHEET

War Memorial Building Wetzel County, WV
Section number 9 Page 1

Bibliography

Wetzel County Court, County Court Order 15, p. 306, Record Book 1929.

Barnes' Code, 1923, of West Virginia, Chapter 18.

Wetzel County Deed Book 14, p. 367.

Fauber, James "History of War Memorial Building", unpublished.

Fitzsimmons, James F. "Wetzel County War Memorial Okayed by Act of
Legislature", WHEELING NEWS-REGISTER, date unknown.

Interview with William Bowers, James F. Fitzsimmons, and James E. Fauber
by Katherine Jourdan, February 14, 1997, New Martinsville.

Obituary, "Services for Mr. Giesey to Occur Thursday", WHEELING NEWS
REGISTER (December 27, 1931).

Section number 10 Page 1

Boundary

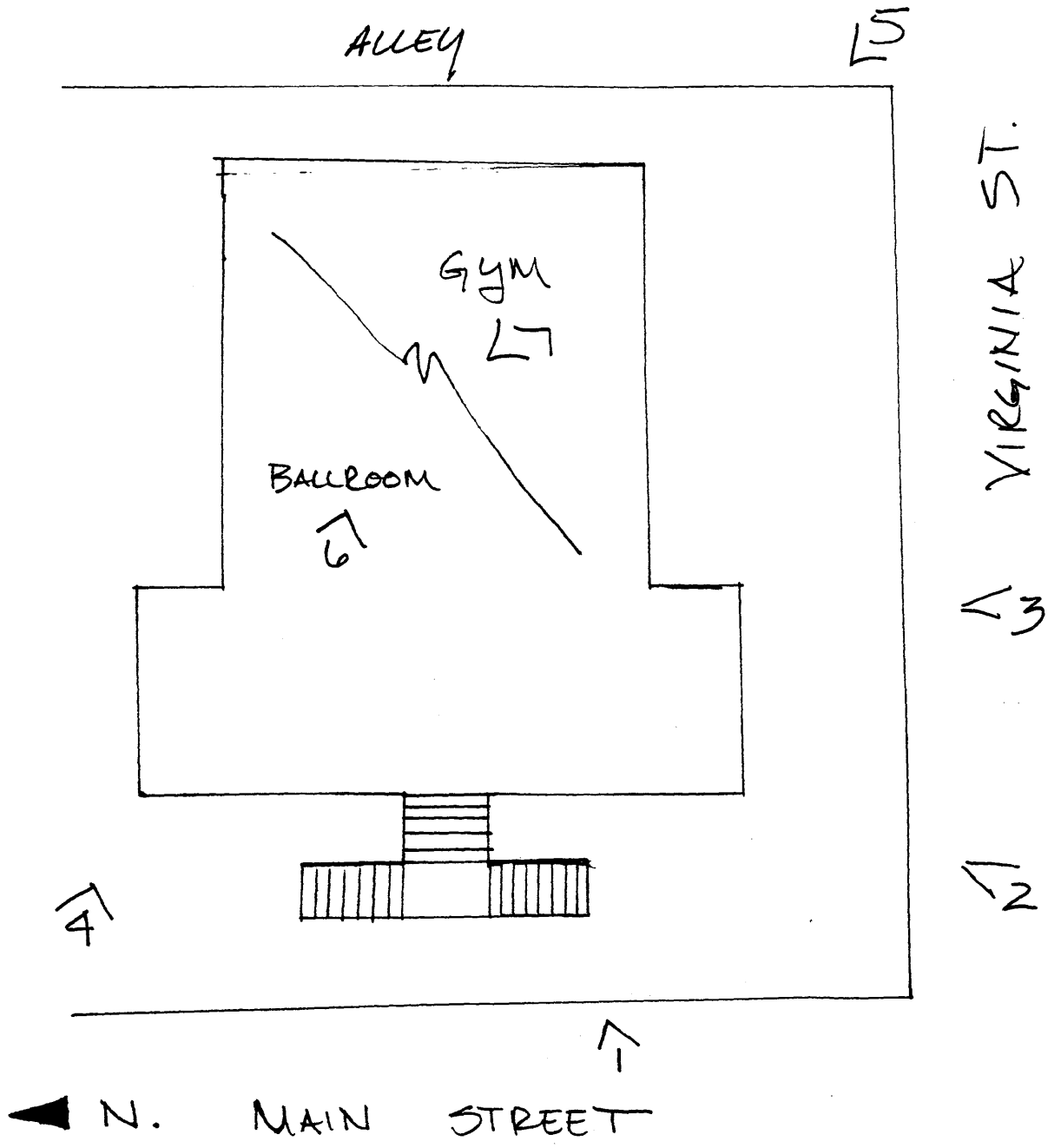
Lots 88 and 89, Martins Addition, New Martinsville, WV

Boundary Justification

Recorded in Deed Book 145, p. 371, Wetzel County Courthouse, New
Martinsville, WV.

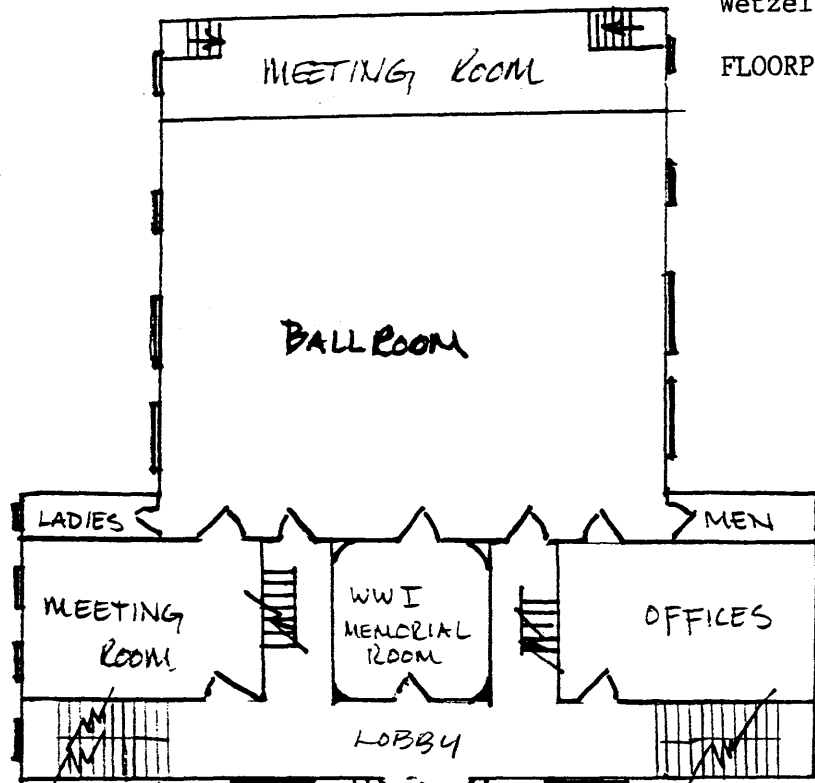
War Memorial Building
New Martinsville, WV
Wetzel County

Photo Map

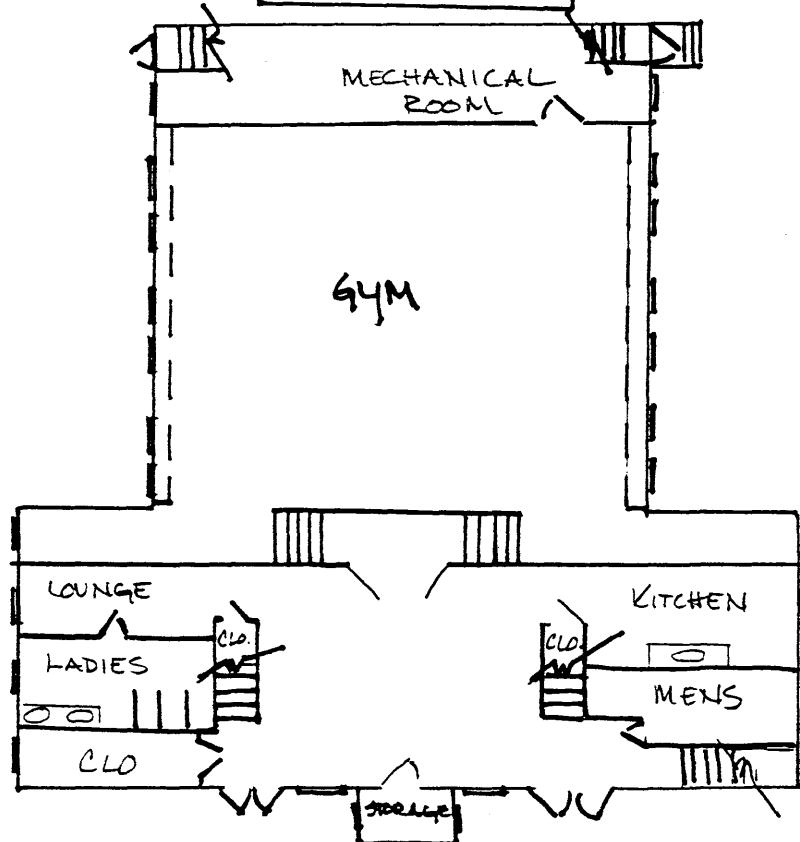


FLOORPLANS

First Floor

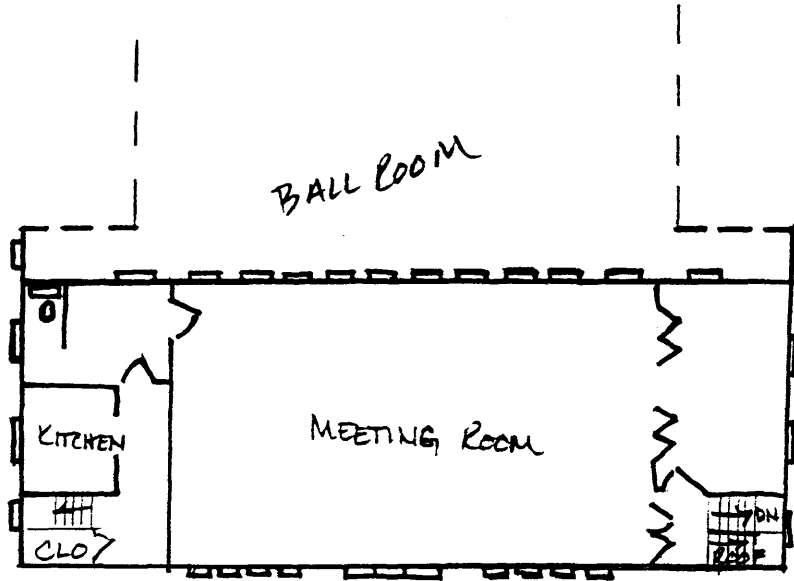


Lower Level



War Memorial Building
New Martinsville, WV
Wetzel County

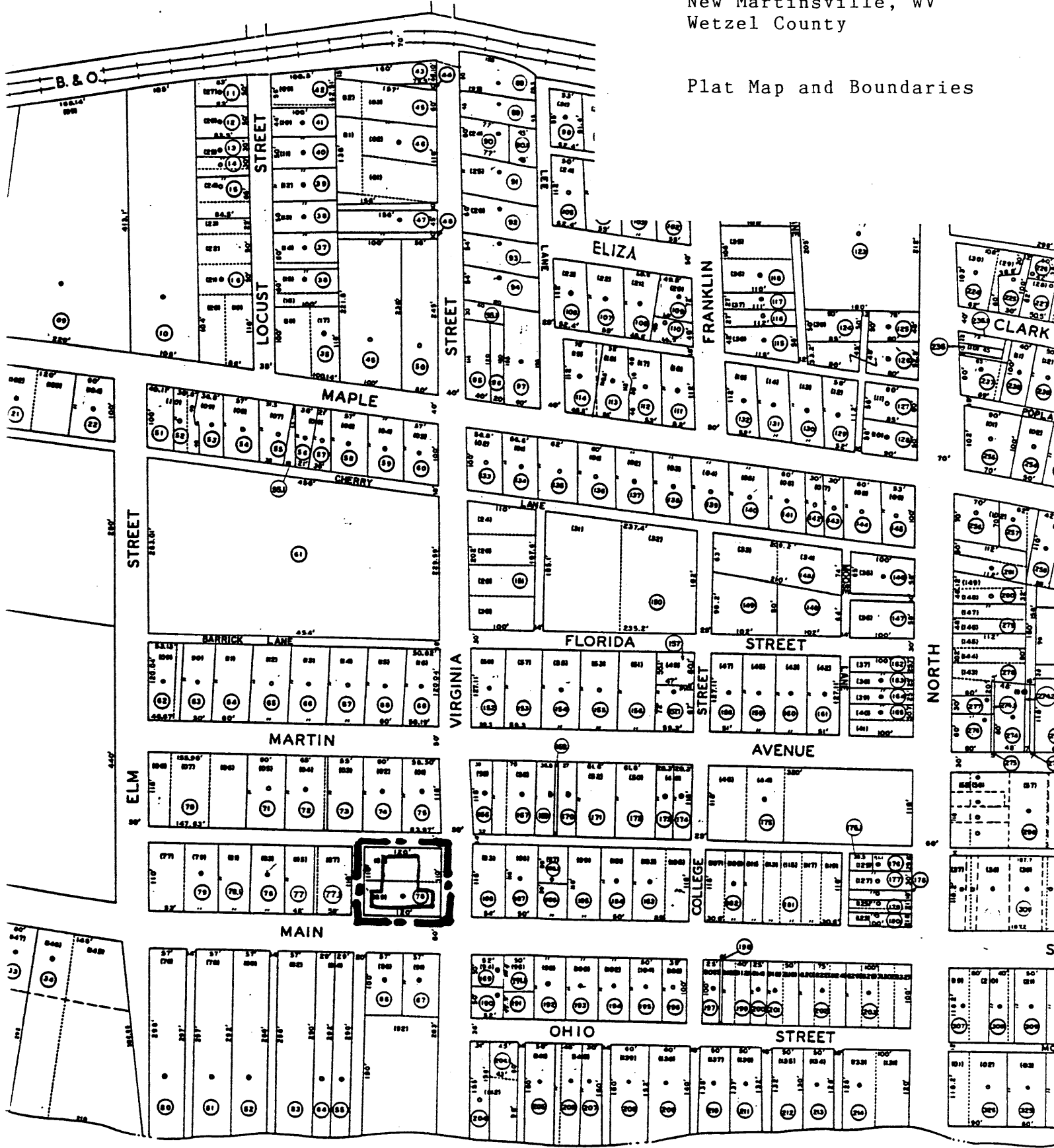
FLOORPLANS



Second Floor

War Memorial Building
New Martinsville, WV
Wetzel County

Plat Map and Boundaries



OHIO

RIVER