

750

NATIONAL REGISTER OF HISTORIC PLACES REGISTRATION FORM

This form is for use in nominating or requesting determinations of eligibility for individual properties or districts. See instructions in "Guidelines for Completing National Register Forms" (National Register Bulletin 16). Complete each item by marking "x" in the appropriate box or by entering the requested information. If an item does not apply to the property being documented, enter "N/A" for "not applicable." For functions, styles, materials, and areas of significance, enter only the categories and subcategories listed in the instructions. For additional space use continuation sheets (Form 10-900a). Type all entries.

1. Name of Property

historic name Building at 6 and 7 Public Square
other names/site number N/A

2. Location

street & number 6 and 7 Public Square
city, town Bowman () **vicinity of**
county Elbert **code** 105
state Georgia **code** GA **zip code** 30624

() not for publication

3. Classification

Ownership of Property:

- private
- public-local
- public-state
- public-federal

Category of Property:

- building(s)
- district
- site
- structure
- object

Number of Resources within Property:

Contributing

Noncontributing

buildings	1	0
sites	0	0
structures	0	0
objects	0	0
total	1	0

Contributing resources previously listed in the National Register: N/A

Name of previous listing: N/A

Name of related multiple property listing: N/A

4. State/Federal Agency Certification

As the designated authority under the National Historic Preservation Act of 1966, as amended, I hereby certify that this nomination meets the documentation standards for registering properties in the National Register of Historic Places and meets the procedural and professional requirements set forth in 36 CFR Part 60. In my opinion, the property meets the National Register criteria. () See continuation sheet.

Richard Luce
Signature of certifying official

8-7-09
Date

W. Ray Luce
Historic Preservation Division Director
Deputy State Historic Preservation Officer

In my opinion, the property () meets () does not meet the National Register criteria. () See continuation sheet.

Signature of commenting or other official

Date

State or Federal agency or bureau

5. National Park Service Certification

I, hereby, certify that this property is:

entered in the National Register

Edson A. Beall 9-24-09

determined eligible for the National Register

determined not eligible for the National Register

removed from the National Register

other, explain:

see continuation sheet

for

Keeper of the National Register

Date

6. Function or Use

Historic Functions:

Commerce/Trade: department store

Government: post office

Current Functions:

Commerce/Trade: department store

7. Description

Architectural Classification:

Late Victorian: Italianate

Materials:

foundation	Concrete
walls	Brick
roof	Asphalt
other	Metal: iron

Description of present and historic physical appearance:

The Building at 6 and 7 Public Square is a one-story brick commercial building located in downtown Bowman in Elbert County in northeast Georgia. Bowman is a small town along the railroad in a rural part of Elbert County approximately 10 miles northwest of Elberton, the county seat. The commercial area of Bowman is organized around the public square, an open expanse of grass and small trees. The square is surrounded on three sides by one- and two-story attached commercial buildings. The north side of the square is open to State Route 17 and the Southern Railway line. The covered well in the center of the square was built at the end of the 19th century.

The Building at 6 and 7 Public Square is located in a block of attached brick commercial buildings. It is an Italianate-style commercial block with a double storefront. The side-by-side businesses share a common wall. Two cast-iron columns support a thin cast-iron lintel, which allows large expanses of glass in the doors, transoms, and display windows. The cast-iron columns feature molded bases and brackets, flutes, medallions, and the name of the foundry in Chattanooga, Tennessee, where the columns were produced. The brickwork along the sides and across the parapet includes stringcourses, decorative panels, and recessed squares.

The interior plan for each interior space features a large finished space in front for commercial activity and smaller rooms in back. A cased opening in the common wall joins both stores. The store at no. 7 features a pressed-metal ceiling and a skylight. The store at no. 7 also includes a concrete-block shed-roofed addition across the rear. The addition, which includes a restroom and storage space, is clad in weatherboard.

National Register of Historic Places Continuation Sheet

Section 7--Description

As part of the certified rehabilitation in 2008, interior commercial spaces have been retained and historic features, such as doors and windows, and the pressed-metal ceiling and cove cornice, have been repaired or replaced with in-kind material. Final certification for the Building at 6 and 7 Public Square was approved by the National Park Service for federal tax credits on July 1, 2008. The property received final certification from the Historic Preservation Division for the state property tax abatement and state income tax credit programs on May 28, 2008.

8. Statement of Significance

Certifying official has considered the significance of this property in relation to other properties:

nationally statewide locally

Applicable National Register Criteria:

A B C D

Criteria Considerations (Exceptions): N/A

A B C D E F G

Areas of Significance (enter categories from instructions):

Architecture
Commerce

Period of Significance:

1908-1959

Significant Dates:

1908 – Building at 6 and 7 Public Square was completed and opened for business.

Significant Person(s):

N/A

Cultural Affiliation:

N/A

Architect(s)/Builder(s):

Unknown

National Register of Historic Places Continuation Sheet

Section 8--Statement of Significance

Statement of significance (areas of significance)

Bowman in Elbert County is a small town in northeast Georgia that served as a commercial center in northwest Elbert County through the middle of the 20th century. The buildings that form three sides of its public square are representative examples of commercial buildings built in small towns throughout Georgia in the first decades of the 20th century. The plan of streets in Bowman with its open public square alongside the railroad was typical of small commercial centers throughout Georgia in the 19th and beginning of the 20th centuries. The Building at 6 and 7 Public Square is typical of commercial buildings in Bowman and commercial buildings that were built throughout Georgia.

The Building at 6 and 7 Public Square in Bowman is significant in the area of architecture because it is an excellent representative example of commercial buildings built in small towns throughout Georgia in the first decades of the 20th century. In Bowman, most of the commercial buildings on the square were built in the early 1900s with brick walls and storefronts supported by cast-iron columns to allow larger display windows. Their entablatures are ornamented with brick corbels, panels, and basket-weave patterns. Some buildings, like 6 and 7 Public Square, feature elements of the popular architectural styles, such as the Italianate style. Amplifying its architectural significance is its exceptionally high level of physical integrity. For example, its façade retains not only its decorative brickwork but also its cast-iron columns, recessed entrance, plate-glass windows, and its interior retains its coved pressed-metal ceilings—architectural features often lost or obscured on many other commercial buildings of this period.

The Building at 6 and 7 Public Square is significant in the area of commerce because it served as numerous commercial enterprises from the time of its construction in 1908 through the middle of the 20th century. Businesses included a brickyard, gin, shoe and harness shop, blacksmith, lumberyard, bank, drugstore, grocery, and telephone company. Bowman's rise as a center of commerce in the late 19th century resulted from the construction of the railroad line that linked Toccoa in Stephens County and Elberton, the seat of Elbert County. Most of the commercial buildings surrounding the square in Bowman were built in the first decades of the 20th century. These are mostly one- and two-story attached buildings designed in a variety of popular revival styles. In many cases, cast-iron columns support large, plate-glass storefronts. The Building at 6 and 7 Public Square is typical of these commercial buildings with its cast-iron columns, expansive plate-glass windows, and decorative brick entablature.

National Register Criteria

A and C

Criteria Considerations (if applicable)

N/A

National Register of Historic Places **Continuation Sheet**

Section 8--Statement of Significance

Period of significance (justification)

The period of significance begins with the completion of the building at 6 and 7 Public Square and in 1959, the 50-year end date, because the building continued to be used as a commercial buildings throughout the historic period.

Contributing/Noncontributing Resources (explanation, if necessary)

The Building at 6 and 7 Public Square is the only resource associated with this nomination. There no noncontributing resources associated with this nomination.

Developmental history/historic context (if appropriate)

In the late 1870s, as the Elberton Airline was building its rail line from Toccoa to Elberton, Thomas Jefferson Bowman purchased and later subdivided lots along the railroad in what came to be called Bowman. By 1879, two stores and a well were established around the public square. Later in the 19th century, Baptist and Methodist churches and several schools were constructed. Bowman was incorporated in 1907 and the town flourished in the first decades of the 20th century.

Early businesses in Bowman included a brickyard, gin, shoe and harness shop, blacksmith, lumberyard, bank, drugstore, grocery, and telephone company. Economic prosperity in Bowman, like small towns throughout Georgia, declined with the arrival of the boll weevil in the 1910s and 1920s and the onset of the Great Depression. After World War II, returning veterans moved into the rising middle class with the help of the G.I. Bill, and small towns, such as Bowman, saw their populations decrease as Americans migrated to urban areas in the 1950s, 1960s, and 1970s.

The Building at 6 and 7 Public Square was completed in 1908. The double storefront served as a post office on one side and a jewelry store on the other. The post office moved across the street in the 1950s. Since its construction in 1908, the Building at 6 and 7 Public Square has been occupied by a variety of small-scale commercial enterprises, such as the Bowman Mini-burger from the early 1980s until 2002.

In 2008, the building was rehabilitated for continued use as a commercial building. Final certification for the Building at 6 and 7 Public Square was approved by the National Park Service for federal tax credits on July 1, 2008. The property received final certification from the Historic Preservation Division for the state property tax abatement and state income tax credit programs on May 28, 2008.

9. Major Bibliographic References

Harpold, Scott. *Historic District Information Form*. "Bowman Square Historic District." On file at the Georgia Department of Natural Resources, Historic Preservation Division, Atlanta, Georgia, October 5, 2006.

Previous documentation on file (NPS): () N/A

- () preliminary determination of individual listing (36 CFR 67) has been requested
- (X) preliminary determination of individual listing (36 CFR 67) has been issued
date issued: July 1, 2008
- () previously listed in the National Register
- () previously determined eligible by the National Register
- () designated a National Historic Landmark
- () recorded by Historic American Buildings Survey #
- () recorded by Historic American Engineering Record #

Primary location of additional data:

- (X) State historic preservation office
- () Other State Agency
- () Federal agency
- () Local government
- () University
- () Other, Specify Repository:

Georgia Historic Resources Survey Number (if assigned): N/A

10. Geographical Data

Acreage of Property Less than one acre.

UTM References

A) Zone 17 Easting 312800 Northing 3786520

Verbal Boundary Description

The historic district boundary is indicated by a heavy black line on the attached map, which is drawn to scale.

Boundary Justification

The boundary includes the property and all of the intact resources historically associated with the Building at 6 and 7 Public Square in Bowman, Elbert County, Georgia.

11. Form Prepared By

State Historic Preservation Office

name/title Steven Moffson, Architectural Historian
organization Historic Preservation Division, Georgia Department of Natural Resources
mailing address 34 Peachtree Street, N.W., Suite 1601
city or town Atlanta **state** Georgia **zip code** 30303
telephone (404) 656-2840 **date** July 25, 2009
e-mail steven.moffson@dnr.state.ga.us

Consulting Services/Technical Assistance (if applicable) (X) not applicable

name/title
organization
mailing address
city or town **state** **zip code**
telephone
e-mail

- property owner**
- consultant**
- regional development center preservation planner**
- other:**

Property Owner or Contact Information

name (property owner or contact person) Scott Harpold
organization (if applicable) N/A
mailing address 189 West Railroad Street
city or town Bowman **state** GA **zip code** 30624
e-mail (optional) N/A

National Register of Historic Places **Continuation Sheet**

Photographs

Name of Property: Building at 6 and 7 Public Square
City or Vicinity: Bowman
County: Elbert
State: Georgia
Photographer: James R. Lockhart
Negative Filed: Georgia Department of Natural Resources
Date Photographed: May 2009

Description of Photograph(s):

Number of photographs: 11

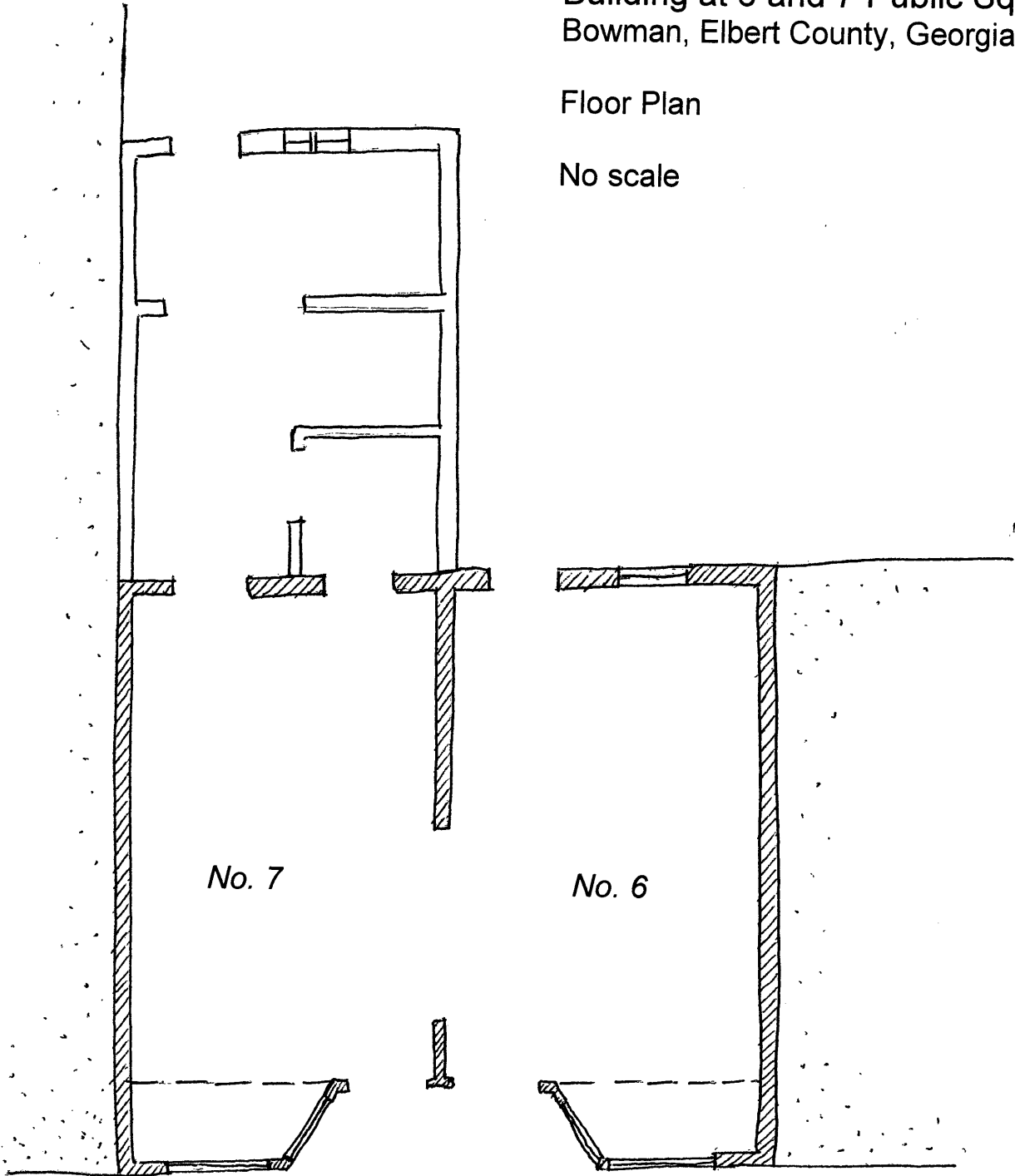
1. Main façade, photographer facing southwest.
2. Main façade, photographer facing west.
3. Public Square, photographer facing west.
4. Interior of No. 7, photographer facing west.
5. Interior of No. 7, photographer facing east.
6. Interior of No. 7, skylight.
7. Interior of No. 7, back room, photographer facing southwest.
8. Interior of No. 6, photographer facing west.
9. Interior of No. 6, photographer facing northeast.
10. Detail of storefront, photographer facing southwest.
11. Rear view (No. 6 at left center, No. 7 with shed-roofed addition), photographer facing east.

(HPD WORD form version 11-03-01)

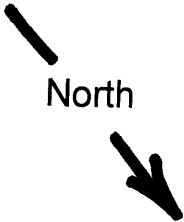
Building at 6 and 7 Public Square
Bowman, Elbert County, Georgia

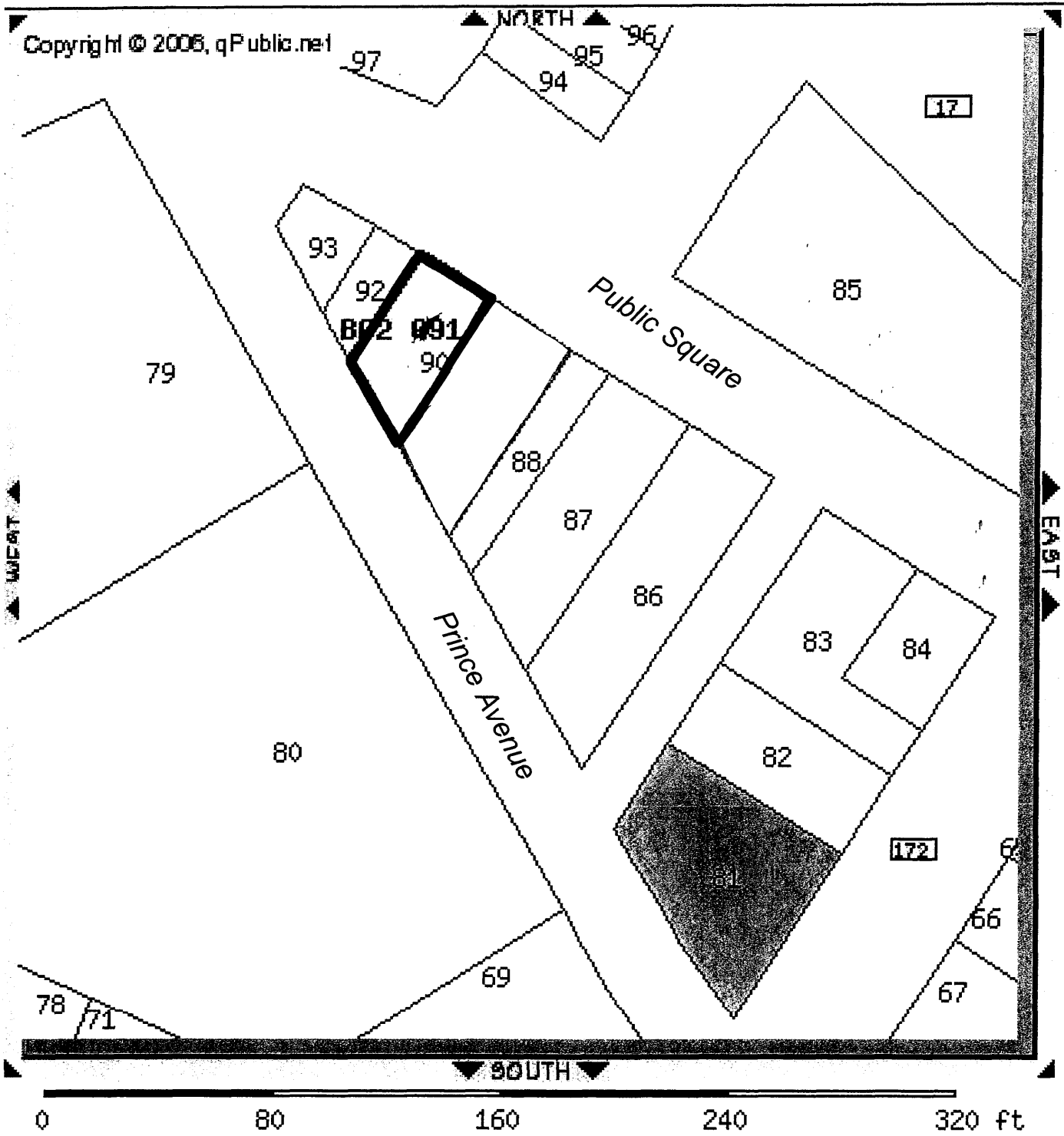
Floor Plan

No scale



Public Square





Building at 6 and 7 Public Square
Bowman, Elbert County, Georgia

Sketch Map

National Register Boundary 