

United States Department of the Interior
National Park Service

National Register of Historic Places
Registration Form



This form is for use in nominating or requesting determinations for individual properties and districts. See instructions in How to Complete the National Register of Historic Places Registration Form (National Register Bulletin 16A). Complete each item by marking "x" in the appropriate box or by entering the information requested. If any item does not apply to the property being documented, enter "N/A" for "not applicable." For functions, architectural classification, materials, and areas of significance, enter only categories and subcategories from the instructions. Place additional entries and narrative items on continuation sheets (NPS Form 10-900a). Use a typewriter, word processor, or computer, to complete all items.

1. Name of Property

historic name MARCIA BROWNE JUNIOR HIGH SCHOOL

other names/site number BROADWAY SCHOOL

2. Location

street & number 295 BRO ADWAY not for publication

city or town MALDEN vicinity

state MASSACHUSETTS code MA county MIDDLESEX code 017 zip code 02148

3. State/Federal Agency Certification

As the designated authority under the National Historic Preservation Act of 1986, as amended, I hereby certify that this nomination request for determination of eligibility meets the documentation standards for registering properties in the National Register of Historic Places and meets the procedural and professional requirements set forth in 36 CFR Part 60. In my opinion, the property meets does not meet the National Register Criteria. I recommend that this property be considered significant nationally statewide locally. (See continuation sheet for additional comments.)

Judith B. McDonough
Signature of certifying official/Title Judith B. McDonough, Executive Director
Massachusetts Historical Commission, State Historic Preservation Officer

9/20/2000
Date

State or Federal agency and bureau

In my opinion, the property meets does not meet the National Register criteria. (See continuation sheet for additional Comments.)

Signature of certifying official/Title

Date

State or Federal agency and bureau

4. National Park Service Certification

I, hereby certify that this property is:
 entered in the National Register
 See continuation sheet.
 determined eligible for the National Register
 See continuation sheet.
 determined not eligible for the National Register
 removed from the National Register
 other (explain):

Signature of the Keeper

Patrick Andrews

Date of Action

11/2/00

United States Department of the Interior
National Park Service

National Register of Historic Places
Continuation Sheet

Section number 7 Page 1

Marcia Browne Jr. High School
Malden (Middlesex Co.), Mass.

7. NARRATIVE DESCRIPTION

The Marcia P. Browne School is set back on a 2.58 acre parcel on busy Broadway Avenue, where it commands its residential neighborhood. Level at the front lawn, the lot slopes away slightly towards the rear of the school, exposing the basement as a full story. Chain link fences and asphalt paving surround the sides and rear of the school. Development along Broadway consists of a mix of dwellings of the same period as the school, and modern commercial intrusions, while the streets to the sides and rear of the building are lined with residences spanning the twentieth century.

The building consists of a main block (1905), a rear classroom ell (east), and an auditorium/gymnasium wing to the north (both 1925). Set on a granite foundation, the red brick block rises two stories, is trimmed with limestone and sheltered by a low, slate hipped roof. The façade is symmetrically arranged, with a central entry, and a shallow, three-bay pavilion projecting at each end of the building. The main entry is given prominence by massive banded stone columns and a heavy stone entablature, with a central console supporting a stone balcony above it. A pair of glazed, paneled doors is recessed beneath the portico, with a segmentally arched transom above. Windows at the seven-bay central section are paired. Windows are in rectangular openings with limestone sills and keystones set in splayed brick lintels. All windows have been replaced with aluminum 1/1 sash. Other features include brick belt courses at the basement, a limestone water table at the head of the basement, brick quoins punctuating the corners of the façade, and two symmetrically placed paneled chimneys rising through the roof's front slope.

The south end elevation of the main block is eight bays wide, with an entry at the head of a brick and granite stairway. The entry contains plywood double doors beneath a rectangular transom. A wrought iron balcony extends across two second-story bays above the entry. The Rear (east) and north elevations are partially obscured by the 1925 additions, and are detailed similarly to the façade.

Projecting east from the center of the original building is the 1925 classroom wing. Set on a concrete foundation, it is a flat-roofed, two-story wing, 102' x 66' in size. The wing is fourteen bays long. Its rear elevation has a projecting central pavilion with an entry consisting of modern

(continued)

United States Department of the Interior
National Park Service

National Register of Historic Places
Continuation Sheet

Section number 7 Page 2

Marcia Browne Jr. High School
Malden (Middlesex Co.), Mass.

metal double doors beneath a transom set in a molded architrave with an entablature and cartouche above. Above the entry is a large round-arched window lighting the stairway. Windows have cast-stone sills and brick lintels. Other features of the classroom ell include a projecting cornice, and a cast-stone water table.

A hyphen at the north end of the block connects to the 1925 auditorium/gymnasium wing. Originally a one-story, brick structure, the hyphen was recently enlarged by the addition of a set back second story. Like the classroom ell, the auditorium wing is a classically detailed two-story, brick structure with a flat roof. The façade is three bays wide, with cast stone steps rising to three round-arched openings. These openings contained double doors until the recent rehabilitation, which replaced the doors with glass panels. Above each door, small square windows repeat the symmetry, and a flat frieze topped with a cast-stone belt course and cartouche further define the projecting pavilion entry. Side elevations of the auditorium possess five round-arched openings with cast-stone blind heads, rectangular windows, and cast-stone panels. Other details of the auditorium wing include a cast stone water table, and cast stone window sills and keystones.

A certified historic rehabilitation of the building was carried out in 1998-1999, resulting in the conversion of the building to 98 units of elderly assisted living. Residential units are now located in the former classroom areas in the main block and classroom wing, with additional units in the new addition at the rear of the site. The three-story addition is 14 bays long along its east elevation, and four bays wide along its north elevation. It is located at the west edge of the classroom wing, and connects to the east edge of the auditorium wing. The former auditorium is now used as a dining room, retaining much of its two-story height and original architectural detail. Kitchen facilities, storage and additional residential units have been added to the rest of the auditorium wing.

The interior plan of the main block and the 1925 classroom addition is a T, with central hallways extending the length of each. Hallways are flanked by former classrooms (now residential units), with a stairway existing at each end of the main block, and at the east end of the 1925 wing. While adaptations have necessarily been made to the interior spaces of the school over the years, little of its structure or decorative detail has been changed. Interior finishes in the hallways, with glazed institutional brick. Stairways have iron balustrades and newel posts with brass finials. The auditorium wing contained a gymnasium at the basement level, and at the first story an entry lobby and auditorium (a two-story space) seating 800. Notable features include the generously sized paneled lobby, paneled balconies, and window cases, all of which were retained in the recent rehabilitation.

(continued)

**United States Department of the Interior
National Park Service**

**National Register of Historic Places
Continuation Sheet**

Section number 7 Page 3

**Marcia Browne Jr. High School
Malden (Middlesex Co.), Mass.**

Archaeological Description

While no prehistoric sites are recorded on the school property, it is possible that sites are present. Four sites are recorded in the general area (within one mile). Environmental characteristics of the property also represent some locational criteria (soil drainage, slope, distance to wetlands) that are favorable indicators for many types of prehistoric sites. Most of the parcel contains well drained soils on a level to moderately sloping land surface. However, the property is located over 1000 feet from the nearest wetlands, a factor that reduces the overall prehistoric sensitivity of this location. Given the above information, the size of the parcel (2.58 acres) and impacts as a result of school construction, a low potential exists for the recovery of prehistoric resources at this location.

There is also a low potential for the recovery of historic archaeological resources on the Marcia Browne Junior High School property. Although the property was part of Hastings "Great Farm" prior to construction of the school, no specific resources have been identified for this location. Artifact scatters or "sheet refuse" might exist on the school property related to specific events and the day to day activities at the school, however, this information would have limited research value.

(end)

Marcia Browne Junior HS
Name of Property

Middlesex, MA
County and State

8. Statement of Significance

Applicable National Register Criteria

(Mark "x" in one or more boxes for the criteria qualifying the property for National Register listing.)

- A** Property is associated with events that have made a significant contribution to the broad patterns of our history.
- B** Property is associated with the lives of persons significant in our past.
- C** Property embodies the distinctive characteristics of a type, period, or method of construction or represents the work of a master, or possesses high artistic values, or represents a significant and distinguishable entity whose components lack individual distinction.
- D** Property has yielded, or is likely to yield, information important in prehistory or history.

Criteria Considerations

(Mark "x" in all the boxes that apply.)

Property is:

- A** owned by religious institution or used for religious purposes.
- B** removed from its original location.
- C** a birthplace or grave.
- D** a cemetery.
- E** a reconstructed building, object, or structure.
- F** a commemorative property.
- G** less than 50 years of age or achieved significance within the past 50 years.

Narrative Statement of Significance

(Explain the significance of the property on one or more continuation sheets.)

9. Major Bibliographical References

(Cite the books, articles, and other sources used in preparing this form on one or more continuation sheets.)

Previous documentation on file (NPS):

- preliminary determination of individual listing (36 CFR 67) has been requested
- previously listed in the National Register
- previously determined eligible by the National Register
- designated a National Historic Landmark
- recorded by Historic American Buildings Survey # _____
- recorded by Historic American Engineering Record # _____

Areas of Significance

(Enter categories from instructions)

ARCHITECTURE

EDUCATION

Period of Significance

1905-1950

Significant Dates

n/a

Significant Person

(Complete if Criterion B is marked above)

n/a

Cultural Affiliation

n/a

Architect/Builder

Edward I. Wilson

Primary location of additional data:

- State Historic Preservation Office
- Other State agency
- Federal agency
- Local government
- University
- Other

Name of repository:

United States Department of the Interior
National Park Service

National Register of Historic Places
Continuation Sheet

Marcia Browne Jr. High School
Malden (Middlesex Co.), Mass.

Section number 8 Page 1

8. STATEMENT OF SIGNIFICANCE

The Marcia Browne School possesses integrity of location, design, setting, materials, workmanship, feeling and is significant for its association with the development of Malden's school system and as a good example of Colonial Revival school design in Malden. It meets criteria A and C for listing on the National Register of Historic Places, and is of local significance. The period of significance extends from its construction date of 1905 through 1949 based upon its continued use as a school throughout that time.

The school was constructed in 1905 in the Maplewood section of Malden, and opened for classes in September of 1906, in response to the explosive growth in the city's population as the once rural farming community industrialized during the nineteenth century. Continued growth of the school's population prompted a major addition of two wings in 1925, creating from its original rectangular form, a U-shaped plan, with Colonial Revival detailing compatible with the original main building. It was the first of Malden's brick schools to depart from the Romanesque Revival style inspired by H.H. Richardson's Converse Library, built in Malden in 1885.

Known as the "Mystic Side" since its founding in 1634, Malden initially incorporated the present-day cities of Malden, Everett and Melrose. Construction of the Newburyport Turnpike in the early nineteenth century prompted the city's development to the north along Broadway Street, eventually creating the Linden and Maplewood districts of the town. Always located on a significant early transportation route, when the Boston and Maine Railroad laid tracks through Malden in 1845, its importance as a transportation corridor was cemented.

From the mid-nineteenth through the early twentieth centuries Malden experienced a surge in industrial development and resulting population explosion. New immigrants flooded the town to service the new factories. By 1861 Malden's population was 6,000 and continued to increase rapidly to service the production of shoe lasts. Leather products, shoes and tin ware in the nineteenth century and by the early 20th century, dye houses and rolling mills. By 1882 when the Town of Malden was incorporated as a city, its population was slightly more than 12,000. This number grew to about 50,000 by 1917.

With the rapid population growth, the four schools that had existed in Malden since 1830 ceased to fill the city's educational needs, and by 1898 Malden had been facing an overcrowding crisis

(continued)

United States Department of the Interior
National Park Service

National Register of Historic Places
Continuation Sheet

Marcia Browne Jr. High School
Malden (Middlesex Co.), Mass.

Section number 8 Page 2

for some time. Concerned both with overcrowding and with inadequate heating and ventilation in its existing school facilities, the School Board responded that year with a ruling to require a census to determine where the school population was most congested, in order to put together a comprehensive long range school building plan for the city.

By 1900 seven brick school buildings of ten or more rooms, with another of eight, had been built to replace the smaller wooden school buildings (of which nine still existed in 1900). By 1902 overcrowding was still serious enough to require the elimination of kindergarten classes and the creation of staggered part-time school days. In 1903 the Superintendent reported that classes were housed in temporary buildings outside the schools, and that five rooms at the Maplewood School had class sizes of 49 children per room. The total school population increased from 2,942 in 1890 to 5,517 in 1900 and to 6,319 by 1903. The Maplewood district was continually mentioned as being in urgent need of new school facilities.

The Browne School was both a response to the overcrowding crisis, and as an integral element in an evolving master plan for the city's education program. Malden's School Committee attempted to create modern facilities, using the critical need for new class space as an opportunity to rethink the entire system's curricula and goals. The Browne School in its first period of construction thus reflected the decision of the School Committee to centralize education in neighborhood schools of increasing size, with enough land for later expansion to provide an increasing number of broadly defined educational services.

Planned as an elementary school in 1904 to serve the Maplewood district, the Browne School was then known as the Broadway school for its location. Malden bought the land for the school from the widow of James Hunting for \$6,000. Once known as Hunting's "Great Farm," by 1885 the school lot and adjacent parcels owned by Hunting has been already platted for housing subdivisions, though most were yet undeveloped.

The building was designed by Boston architect Edward I. Wilson, and \$45,000 was allocated for its construction. Wilson, active between 1892 and 1933, designed in the Beaux Arts tradition. Two of his buildings, the 1910 Chelsea Masonic Temple and the 1930 Broad St. fire station in Weymouth, are listed on the National Register of Historic Places. He is also known to have designed an 1895 Shingle style wood-framed school in Magnolia that was reviewed in the January 15, 1895 issue of Producer and Builder magazine.

(continued)

United States Department of the Interior
National Park Service

National Register of Historic Places Continuation Sheet

Marcia Browne Jr. High School
Malden (Middlesex Co.), Mass.

Section number 8 Page 3

By the end of the nineteenth century Malden was recruiting its design talent from Boston. Designed by different architects, each school was a distinctly individual iteration of a variety of revival styles. For example, Leonard School (1884), Belmont (1889), Glenwood (1898) and Malden High School (1899) each made distinctive use of Romanesque Revival elements. Post-1900 even greater variety was attained in the use of Colonial Revival, Tudor and Beaux Arts styles.

By 1905 when the Broadway (Browne) School was designed, Wilson created a Colonial Revival plan which was characteristic of school design of the period in style and function. The Malden News headline of July 22, 1905 proudly announced that "Maplewood's New Grammar School on Broadway To Be One of Malden's Finest Education Structures." Innovative features included the heating system, supplying ample fresh air, "the cupless hygienic drinking fountains, specialized spaces for teachers, a library, separate boys and girls' "playrooms," and the creation of lockers. Fire safety was addressed by the use of brick, stone and slate as construction materials in contrast to the wood used in earlier schools. Provision was made for future expansion of the school with space for four more classrooms. Constructed by the firm of J.J. Prindiville, the school opened its doors in September 1906.

While the School Committee proudly reported on the completion of the Broadway (Browne) School in its 1906 City Report, it was noted that with school population increasing by 41% in contrast to the general population's growth of 22%, an addition would need to be considered in the near future. As the Committee predicted, the extension of the "electric car" lines to Maplewood continued the rapid development of former farms and estates, so that by 1918 the School Superintendent was recommending an addition to the newly renamed "Marcia P. Browne" School.

In 1913 the City of Malden, at the request of the alumni of the Broadway School, renamed the building as the Marcia P. Browne School "in honor of the beloved principal whose career meant so much to the community and its children."

One result of Malden's efforts to stay at the forefront of educational philosophy was the creation of a junior and senior high school system during the 1920s. Previously Malden had offered nine primary grades and four high school grades to its youth, with half-year promotions, a system which kept the students in school for 13 years and created great fluctuations in class size and makeup from semester to semester. The adoption of the junior high program resulted in major curriculum changes at all grade levels. Taking pride in his city's progressive stance, School

(continued)

**United States Department of the Interior
National Park Service**

**National Register of Historic Places
Continuation Sheet**

**Marcia Browne Jr. High School
Malden (Middlesex Co.), Mass.**

Section number 8 Page 4

Board Chairman Arthur Plummer claimed Malden as "the first city in the state to apply the Junior High School throughout its whole system at one time."

The three schools chosen for the experiment were the Browne School, Lincoln School, and the as yet unbuilt Beebe School. Alterations for two existing schools were planned in 1924, and in response to the state's call for physical training as a part of the school curriculum, Supt. Marshall directed that plans for the new junior highs include gymnasia. This was innovative at a time in which many schools, including Malden High, had no physical training instruction at all.

The importance and experimental nature of the junior high program can be see in the detailed listing of the Browne School's proposed additions and changes in the Annual Report of 1922. This level of specification was unheard of in the city's other annual reports of this period, in which school building programs were usually given a few lines at best.

The School Committee's debates over the role of public education came to fruition in this detailed list, which provided a Malden school with showers for the first time, a science lab, a "Cooking room...accommodating fifteen Domestic Science tables," a Manual Training Room, a lunch room, an auditorium and gymnasium. \$600,000 was budgeted for the additions to the two schools in 1923, of which \$400,000 was intended for the Browne School. In the same Annual Report, the Superintendent reported the death of Marcia P. Browne on April 3, 1923, "teacher and principal at Maplewood school...(who) deserves a place in the records of this city."

Bids opened for construction of an addition in 1924, to include two new wings, one for more classroom space, while the other was to house a new gymnasium and auditorium. The addition was completed by the end of 1925. While no record is found of the architect, the builder of the addition was Cunningham and Sons at a cost of \$319,089. The design of its wings, while not identical to the 1905 school, is sympathetic, of brick and cast-stone construction with Classical design details. The gymnasium/auditorium addition of 1925 on the north side of the school was built as requested by the School Committee, having "suitable entrances," and an auditorium which could seat 800, with a "balcony...that does not require supporting posts."

The Browne School remained in use as a junior high school until the early 1990s with only minor changes to the building. In 1998 and 1999 the building was rehabilitated, and now houses 98 units of elderly assisted living.

(continued)

United States Department of the Interior
National Park Service

National Register of Historic Places Continuation Sheet

Marcia Browne Jr. High School
Malden (Middlesex Co.), Mass.

Section number 8 Page 5

The Browne School is architecturally notable as a well-preserved example of a Colonial Revival style school of the early twentieth century. Its symmetry, classically detailed center entry, broad hipped roof, and splayed lintels are all characteristic design elements. Also significant are the 1925 classroom and auditorium wings, which feature such noteworthy elements as the auditorium's three arched entry bays, blind-arched window openings with cast-stone panels, and the classroom wing's rear entry with its molded architrave, entablature and cartouche.

(end)

United States Department of the Interior
National Park Service

National Register of Historic Places
Continuation Sheet

Marcia Browne Jr. High School
Malden (Middlesex Co.), Mass.

Section number 9 Page 1

9. BIBLIOGRAPHY

Bastille-Neilly, architects and consultants. *Architectural Survey and Inventory, Malden, MA*. Boston. January, 1977.

Boston Public Library, architects file. Edward I. Wilson. Unpublished compilation of Information from The Directory of Boston City Architects, news clippings, etc.

Childs, Ruth L.S. "History of the Schools of Malden." Typescript, n.d. Copies at the Massachusetts State Library and the Malden Public Library.

City of Malden. *Annual Report*. 1903-1906 and 1922-1926.

Colson, William Wyman, comp. *Malden, Ma. Thirty Fifth Anniversary, 1882-1917*. Malden, 1917.

Corey, Deloraine P. *The History of Malden, 1635-1785*. Malden, 1898.

Malden Evening News, July 22, 1905; April 13, 1913, July 4, 1913, April 27, 1924; July 31, 1969; October 27, 1969; April 4, 1971; and April 6, 1971.

Malden, Massachusetts Tercentenary Commission. *Malden's Celebration of the Massachusetts Bay Tercentenary, May 1930*. Malden Historical Society, 1931.

Massachusetts Historical Commission. *Inventory of Historic Resources*. [form B, Malden # 52-57, 81, 401; Chelsea #8; Weymouth #306]

_____. Reconnaissance Survey of Malden, Massachusetts, 1980. Unpublished typescript.

(continued)

Marcia Browne Junior HS
Name of Property

Middlesex, MA
County and State

10. Geographical Data

Acreege of Property 2.58 acres

UTM References See continuation sheet.

(Place additional UTM references on a continuation sheet)

1. 19	332250	4699650	3.		
Zone	Easting	Northing	Zone	Easting	Northing
2.			4.		
Zone	Easting	Northing	Zone	Easting	Northing

See continuation sheet

Verbal Boundary Description

(Describe the boundaries of the property on a continuation sheet.)

Boundary Justification

(Explain why the boundaries were selected on a continuation sheet.)

11. Form Prepared By

name/title Kim Withers Brengle, Consultant, with Betsy Friedberg, NR Director, MHC

organization Massachusetts Historical Commission date September 2000

street & number 220 Morrissey Boulevard telephone 617-727-8470

city or town Boston state MA zip code 02125

Additional Documentation

Submit the following items with the completed form:

Continuation Sheets

Maps

A **USGS map** (7.5 or 15 minute series) indicating the property's location.

A **sketch map** for historic districts and properties having large acreage or numerous resources.

Photographs

Representative **black and white photographs** of the property.

Additional items (Check with the SHPO or FPO for any additional items)

Property Owner

(Complete this item at the request of the SHPO or FPO.)

name Maplewood Place Assocs., Broadway Browne LLC, Wyner Co., LLC

street & number 100 Second Avenue telephone _____

city or town Needham state MA zip code 02494

Paperwork Reduction Act Statement: This information is being collected for applications to the National Register of Historic Places to nominate properties for listing or determine eligibility for listing, to list properties, and to amend existing listings. Response to this request is required to obtain a benefit in accordance with the National Historic Preservation Act, as amended (16 U.S.C. 470 et seq.).

Estimated Burden Statement: Public reporting burden for this form is estimated to average 18.1 hours per response including the time for reviewing instructions, gathering and maintaining data, and completing and reviewing the form. Direct comments regarding this burden estimate or any aspect of this form to the Chief, Administrative Services Division, National Park Service, P.O. Box 37127, Washington, DC 20013-7127; and the Office of Management and Budget, Paperwork Reductions Project (1024-0018), Washington, DC 20503. NPS Form 10-900 OMB No.

United States Department of the Interior
National Park Service

**National Register of Historic Places
Continuation Sheet**

Marcia Browne Jr. High School
Malden (Middlesex Co.), Mass.

Section number 9/10 Page 2/1

MAPS

Hales, John G. *A Plan of Malden in the County of Middlesex*, 1830.

Malden, City of. *Assessor's Map*. Sheet no. 132, 1997.

Tufts, Peter. *A Plan of the Town of Malden in the County of Middlesex and Commonwealth of Massachusetts*, 1795.

Sargent, A.F., C.E. *Atlas of Malden City, Massachusetts*. Walker & Co., Boston, 1885.

Walker, George H. *Atlas of the City of Malden, Middlesex County, Massachusetts*. Boston, 1897.

Walker, G.W., C.E. "Malden." *Atlas of Massachusetts*. Walker Lithograph and Publishing. Boston, 1909.

(end)

10. GEOGRAPHICAL DATA

Verbal Boundary Description

The nominated property consists of the entire 2.58 acre lot associated with the property, as shown on the attached Malden City Assessors Map No. 132, Block 503, Lot 301.

Boundary Justification

The nominated property is the entire parcel historically associated with the Marcia Browne School.

(end)

United States Department of the Interior
National Park Service

National Register of Historic Places Continuation Sheet

Section number _____ Page _____

Marcia Browne Jr. High School
Malden (Middlesex Co.), Mass.

PHOTOGRAPHS

- Photographer: Kim Withers Brengle
- Date: June 1999
- Negatives at Tremont Preservation Services, Salem, MA

1. View of west elevation, facing SE
2. View of west elevation, auditorium wing, facing E
3. View of south elevation, main building and classroom wing, facing NW
4. View of east elevation, classroom wing, facing SW
5. View of new addition, east elevation, facing W
6. View of north elevation, showing auditorium wing and addition, facing SW
7. Interior, former auditorium, facing W

(end)

UNITED STATES DEPARTMENT OF THE INTERIOR
NATIONAL PARK SERVICE

NATIONAL REGISTER OF HISTORIC PLACES
EVALUATION/RETURN SHEET

REQUESTED ACTION: NOMINATION

PROPERTY NAME: Marcia Browne Junior High School

MULTIPLE NAME:

STATE & COUNTY: MASSACHUSETTS, Middlesex

DATE RECEIVED: 9/26/00 DATE OF PENDING LIST: 10/10/00
DATE OF 16TH DAY: 10/26/00 DATE OF 45TH DAY: 11/10/00
DATE OF WEEKLY LIST:

REFERENCE NUMBER: 00001273

REASONS FOR REVIEW:

APPEAL: N DATA PROBLEM: N LANDSCAPE: N LESS THAN 50 YEARS: N
OTHER: N PDIL: N PERIOD: N PROGRAM UNAPPROVED: N
REQUEST: Y SAMPLE: N SLR DRAFT: N NATIONAL: N

COMMENT WAIVER: N

ACCEPT RETURN REJECT _____ DATE

ABSTRACT/SUMMARY COMMENTS:

RECOM./CRITERIA accept AIC

REVIEWER Patrick Adams DISCIPLINE Historian

TELEPHONE _____ DATE 11/2/00

DOCUMENTATION see attached comments Y/N see attached SLR Y/N



ASSISTED LIVING
INDEPENDENT & ASSISTED LIVING
@ 701-324-4999

INDEPENDENT & ASSISTED LIVING
701-324-4999

Marcia Browne School
295 Broadway
Malden, Middlesex Co., MA

Photographer: Kim Brengle

Date: June, 1999

Negative: Tremont Preservation Services
10 Barr St
Salem, MA

Photo #1 of 7

View of facade (W elevation) facing SE



Marcia Browne Jr. High School
295 Broadway
Malden, Middlesex Co, MA

Photographer: Kim Brengle

Date: June 1999

Negative: Tremont Preservation Services
10 Barr St.
Salem, MA

Photo #2 of 7

View of W elevation, auditorium wing, facing E



Marcia Browne Jr. High School

295 Broadway

Malden, Middlesex Co. MA

Photographer: Kim Bringle

Date: June 1999

Negative: Tremont Preservation Services

10 Barr St

Salem, MA

Photo# 3 of 7

View of S elevation, main building and classroom wing,
facing NW.



Marcia Browne Jr. High School

295 Broadway

Malden, Middlesex Co., MA

Photographer: Kim Brengle

Date: June 1999

Negative: Tremont Preservation Services

10 Barr St

Salem, MA

Photo # 4 of 7

View of E elevation, classroom wing, facing SW



Marcia Browne Jr High School

295 Broadway

Malden, Middlesex Co, MA

Photographer: Kim Brengle

Date: 6/99

Negative: Tremont Preservation Services

10 Barr St

Salem, MA

Photo # 5 of 7

View of new addition, E elevation, facing W.



Marcia Browne Jr. High School

295 Broadway

Malden, Middlesex Co, MA

Photographer: Kim Brengle

Date: June 1999

Negative: Tremont Preservation Services

10 Barr St.

Salem, MA

Photo #6 of 7

View of NE elevation showing auditorium wing and
addition. Facing SW.



Marcia Browne Jr. High School

295 Broadway

Malden, Middlesex Co, MA

Photographer: Kim Brengle

Date: June 1999

Negative: Tremont Preservation Services

10 Barr St

Salem, MA

Photo # 7 of 7

Interior view of former auditorium facing W.

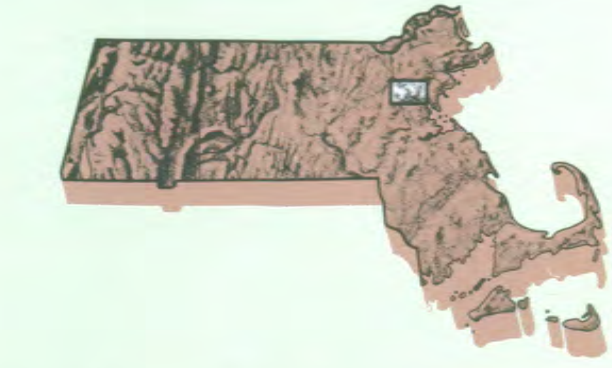
Marcia Browne Jr. High
School

Malden, Middlesex Co,
MA

Assessor's Map 132

Boston North MASSACHUSETTS

1:25 000-scale metric
topographic map



7.5 X 15 MINUTE QUADRANGLE
SHOWING

- Contours and elevations in meters
- Highways, roads and other manmade structures
- Water features
- Woodland areas
- Geographic names



Produced by the United States Geological Survey in cooperation with Massachusetts Department of Public Works
 Control by USGS, NOS-NOAA, and Commonwealth of Massachusetts agencies
 Compiled by photogrammetric methods from aerial photographs taken 1978. Field checked 1979. Map dated 1985.
 Supersedes Boston North and Lexington 1:25,000-scale maps dated 1971.
 Selected hydrographic data compiled from NOS chart 13272 (1982).
 This information is not intended for navigational purposes.
 Projection and 1900-meter grid: Universal Transverse Mercator, zone 19.
 10,000-foot grid ticks based on Massachusetts coordinate system, mainland zone, 1927 North American Datum.
 To place on the predicted North American Datum 1983 move the projection lines 5 meters south and 41 meters west as shown by dashed corner ticks.
 There may be private subdivisions within the boundaries of the National or State reservations shown on this map.

CONTOUR INTERVAL 3 METERS
 NATIONAL GEODETIC VERTICAL DATUM OF 1929
 CONTROL ELEVATIONS SHOWN TO THE NEAREST 0.1 METER
 OTHER ELEVATIONS AND SOUNDINGS IN METERS
 DATUM IS MEAN LOW WATER
 THE RELATIONSHIP BETWEEN THE TWO DATUMS IS VARIABLE
 SHOULDER SHOWN REPRESENTS THE APPROXIMATE LINE OF MEAN HIGH WATER
 THE MEAN RANGE OF TIDE IS APPROXIMATELY 2.5 METERS

THIS MAP COMPLES WITH NATIONAL MAP ACCURACY STANDARDS FOR SALE BY U.S. GEOLOGICAL SURVEY

CONVERSION TABLE

Meters	Feet
1	3.2808
2	6.5617
3	9.8425
4	13.1234
5	16.4042
6	19.6850
7	22.9659
8	26.2467
9	29.5276
10	32.8084

DECLINATION DIAGRAM

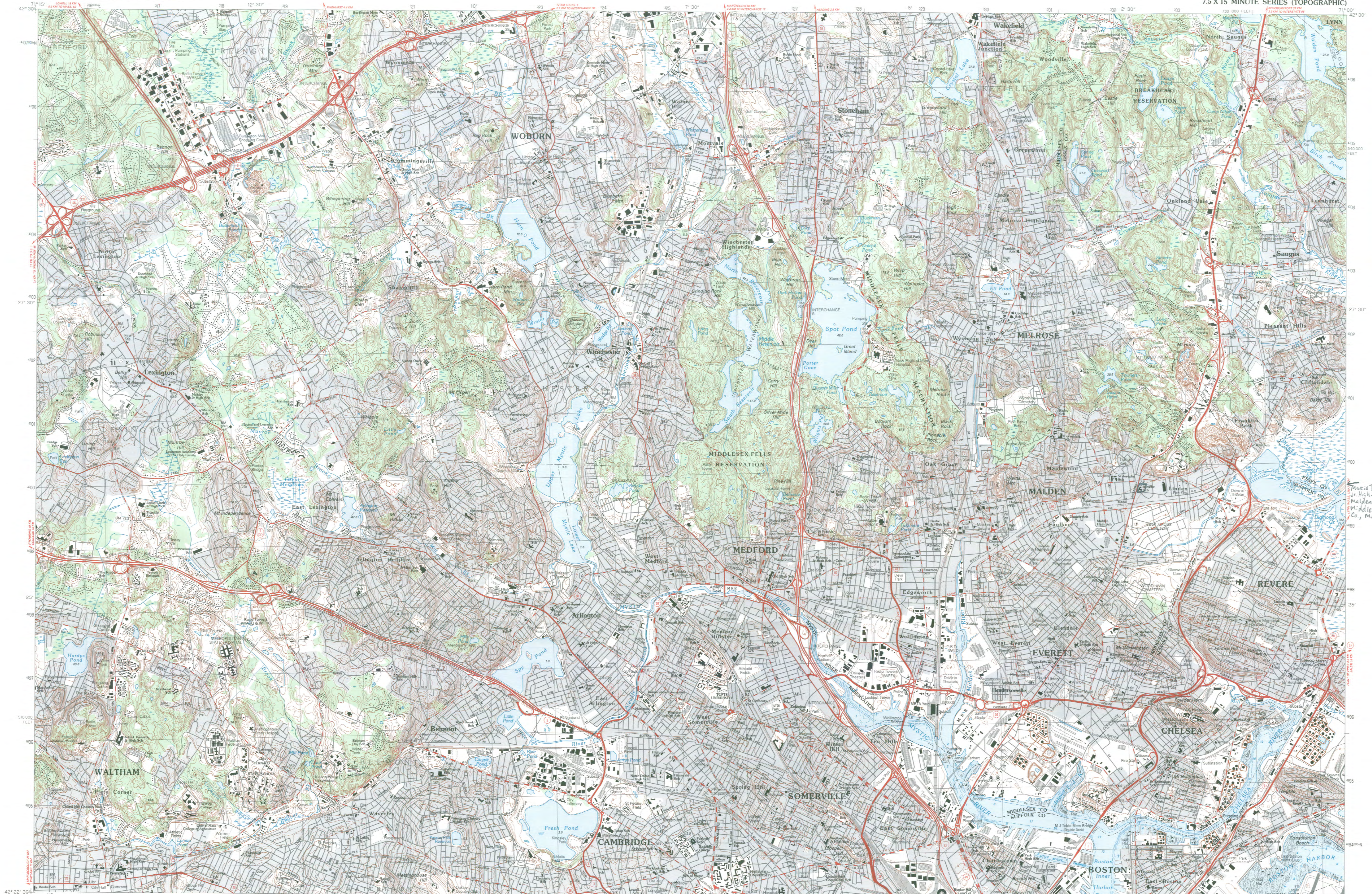
UTM grid convergence (IGN and 1983 magnetic declination) at center of map. Diagram is approximate.

ADJOINING MAPS	1	2	3
1	Billerica		
2	Reading		
3	Salem		
4	Maynard		
5	Lynn		
6	Frammingham		
7	Boston South		
8	Hull		

Topographic Map Symbols

- Primary highway, hard surface
- Secondary highway, hard surface
- Light-duty road, hard or improved surface
- Unimproved road, trail
- Route marker: Interstate; U.S.; State
- Railroad: standard gage; narrow gage
- Bridge: drawbridge
- Footbridge; overpass; underpass
- Built-up area: only selected landmark buildings shown
- House; barn; church; school; large structure
- Boundary:
 - National, with monument
 - State
 - County, parish
 - Civil township, precinct, district
 - Incorporated city, village, town
 - National or State reservation; small park
 - Land grant with monument; found section corner
 - U.S. public lands survey; range, township, section
 - Range, township, section line: location approximate
 - Fence or field line
 - Power transmission line, located tower
 - Dike; dam with lock
 - Canary; grave
 - Campground; picnic area; U.S. location monument
 - Wellhead; water well; spring
 - Mine shaft; prospect; adit or open; township, section
 - Control: horizontal station; vertical station; spot elevation
 - Contours: index; intermediate; supplementary; depression
 - Distorted surface: strip mine, lava, sand
 - Bathymetric contours: index; intermediate
 - Parenteral lake and stream; intermittent lake and stream
 - Rapids; large and small; falls; large and small
 - Submerged marsh; marsh; swamp
 - Land subject to controlled inundation; woodland
 - Scrub; mangrove
 - Orchard; vineyard

A pamphlet describing topographic maps is available on request





The Commonwealth of Massachusetts
William Francis Galvin, Secretary of the Commonwealth
Massachusetts Historical Commission

September 21, 2000

Ms. Carol Shull
National Register of Historic Places
Department of the Interior
National Park Service
Mail Stop 2280, Suite 400
1849 C Street, NW
Washington, DC 20240

Dear Ms. Shull:

Enclosed please find the following nomination form:

Marcia Browne Junior High School, 295 Broadway, Malden, (Middlesex), MA

The nomination has been voted eligible by the State Review Board and has been signed by the State Historic Preservation Officer. The owners of the property were notified of pending State Review Board consideration 30 to 45 days before the meeting and were afforded the opportunity to comment.

We request an expedited review of this nomination.

Sincerely,

A handwritten signature in cursive script that reads "Betsy Friedberg".

Betsy Friedberg
National Register Director
Massachusetts Historical Commission

enclosure

cc: Barbara Tolstrup, Malden Historical Commission
Kim Brengle, TPS, Preservation Consultant
Mayor Richard Howard, City of Malden
Maplewood Place Associates, Broadway/ Browne LLC, Wyner Co. LLC
Timothy Glynn, Malden Planning Board