



Lonaconing Historic District

Allegheny County

1982

Photo: Mark R. Edwards

Neg: Maryland Historical Trust, Annapolis, MD

Intersection of Union and West Main Sts. looking S. Toward Ternent's Store & confluence of Jackson & Union Sts. (Brady Hotel, AL-VI-B106

is at right) 1/50



PAT'S
FURNITURE CO.
MAYTAG

BARBERS

Gibson
PAT'S FOOTWARE

HOTEL BRADY

Lonaconing Historic District

Allegheny County

1982

Photo: Mark R. Edwards

Neg: Maryland Historical Trust, Annapolis, MD

S. side of W. Main St., looking W. past the
intersection of Union and W. Main Sts. (Brady

Hotel, AL-VI-B-106 is at R.) 2,50



Marshall's
FOUNTAIN LUNCH
Coca-Cola

NO
PARKING
ANY TIME

Lonaconing Historic District

Alleghany County

1982 Photo: Mark R. Edwards

Neg: Maryland Historical Trust, Annapolis, MD.

S. side of W. Main St., between intersections
of Ayers Alley & of Union St. with W. Main St.
(Brady Hotel, AL-VI-B-106, is at R) 3/50



Lonaconing Historic District

Allegheny County

1982 Photo: Mark R. Edwards

Neg: Maryland Historical Trust, Annapolis, MD.

W. side of Church St. opposite Methodist Church

& north of Church St.'s intersection with W.

Main, ascending the hill (2 typical duplexes

with 3-bay wide porches are at center) 4/50



Lonaconing Historic District

Alleghany County

1982 Photo: Mark R. Edwards

Neg: Maryland Historical Trust, Annapolis, MD.

George's Creek Coal & Iron Co. offices

(AL-VI-B-086) Park Street, from S.E. corner.



HOTEL ERADY

MULLY'S BAR

Lonaconing Historic District

Alleghany County

1982 Photo: Mark R. Edwards

Neg: Maryland Historical Trust, Annapolis, MD.

Hotel Brady (AL-VI-B-106), W. Main St., from
N.W. corner showing W. Main St. facade.



Lonaconing Historic District

Alleghany County

1982 Photo: Mark R. Edwards

Neg: Maryland Historical Trust, Annapolis, MD.

Klots Throwing Company (AL-VI-B-087), East
Railroad St., from N.W. corner showing north
elevation along E. Railroad St.



Gibson
APPLIANCE
PUTS FURNITURE

SALE
OF FURNITURE
MAYTAG

MAYTAG'S
SALE
OF
MAYTAG

Lonaconing Historic District

Allegheny County

1982 Photo: Mark R. Edwards

Neg: Maryland Historical Trust, Annapolis, MD.

S. side of W. Main St. between W. Main's inter-
sections with Union St. and Ayers Alley,
looking east (to L)



GEO. TERNENT SONS

PAINT

DRY GOODS
NOTIONS

ROOFING

LADIES READY-TO-WEAR
GROCERIES

GEO. TERNENT SONS
GENERAL MERCHANDISE

ROOF COVERING

LADIES READY-TO-WEAR

SHOES
LADIES FOOTWEAR
for the Entire Family

RAILROAD
CROSSING

STOP
ON RED
SIGNAL

TRUCK

Lonaconing Historic District

Alleghany County

1982 Photo: Mark R. Edwards

Neg: Maryland Historical Trust, Annapolis, MD.

Ternent & Sons Dept. Store (AL-VI-B-107)

2468 Jackson St., from N.W. corner showing
Jackson St.(L) and Railroad St (R) elevations.



LONACONIN
TOWN HALL

AMERICAN
LEGION



15

Lonaconing Historic District

Allegheny County

1982 Photo: Mark R. Edwards

Neg: Maryland Historical Trust, Annapolis, MD.

Eisenberg's Clothing Store (AL-VI-B-108), on
E. side of Jackson St., from S.W. corner of
original (1882) section.

11/50



1911

ON
WA

Lonaconing Historic District

Allegheny County

1982 Photo: Mark R. Edwards

Neg: Maryland Historical Trust, Annapolis, MD.

Eisenberg's Clothing Store (AL-VI-B-108)

Jackson St., from N.W. corner of late 19th
century addition.

12/50



Lonaconing Historic District

Alleghany County

1982 Photo: Mark R. Edwards

Neg: Maryland Historical Trust, Annapolis, MD.

N. side of W. Main St., between W. Main's
intersection with Douglas Ave (L) and Koontz
Run (A.K.A. Scotch Hill)

13/50



PAINTS

HARDWARE
ELECTRICAL SUPPLIES

Lonaconing Historic District

Allegheny County

1982 Photo: Mark R. Edwards

Neg: Maryland Historical Trust, Annapolis, MD.

N. side of W. Main St., between W. Main's
intersection with Church St and Douglas Ave.,
showing westernmost 2 bldgs. on E. corner of
Church/W. Main intersection.

14/50



PAINTS

HARDWARE
HARDWARE SUPPLY

HARDWARE
HARDWARE SUPPLY

PE-CERAMIC

Lonaconing Historic District

Allegheny County

1982 Photo: Mark R. Edwards

Neg: Maryland Historical Trust, Annapolis, MD.

N. side of W. Main St., between W. Main's
intersection with Church St. and Douglas Ave.
showing westernmost 2 bldgs. on E. corner of
Church/W. Main intersection. 15/50



Lonaconing Historic District

Allegheny County

1982 Photo: Mark R. Edwards

Neg: Maryland Historical Trust, Annapolis, MD.

N. side of W. Main St. showing 2 bldgs (one
frame, corner brick) on western side of Church
St. intersection (to the L) and (to the R) con-
tinuing E. on W. Main St.

16/50



Lonaconing Historic District,

Alleghany County

1982 Photo: Mark R. Edwards

17/50

Neg: Maryland Historical Trust, Annapolis, MD.

Early 20th c. houses N. of E. Main St. showing
"neo-rationalistic" house on L (just W. of "D"
St); & Colonial revival house in center and
bungalow (between D. St & St. Peter's Place.)



Lonaconing History District

Allegheny County

1982 Photo: Mark R. Edwards

Neg: Maryland Historical Trust, Annapolis, MD.

Frame double house, late 19th c. on E. side
of Douglas Ave., N. of its intersection with
W. Main St.

18/50



Lonaconing Historic District

Alleghany County

1982 Photo: Mark R. Edwards

Neg: Maryland Historical Trust, Annapolis, MD.

Mid to late 19th c. frame double house,

W. side of Douglas Ave., N. of its inter-

section with Main St.

19/50



Lonaconing Historic District

Allegheny County

1982 Photo: Mark R. Edwards

Neg: Maryland Historical Trust, Annapolis, MD.

Mid and late 19th c. frame double houses, West side of Douglas Ave. N. of its intersection with W. Main St., looking N. as Douglas Ave. ascends the hillside.

20/50



Lonaconing Historic District, Allegany County
1982 Photo: Mark R. Edwards

Neg: Maryland Historical Trust, Annapolis, MD.
Late 19th c. frame cottage with clipped gable
entrance facade facing Douglas Ave. from S.W.
corner showing West (entrance) and South
(longitudinal) elevations.



Lonaconing Historic District

Allegheny County

1982 Photo: Mark R. Edwards

Neg: Maryland Historical Trust, Annapolis, MD.

Late 19th c. 2-story frame house, W. side of
Douglas Ave & N. of its intersection with W.
Main St, showing east facade of house facing
street.



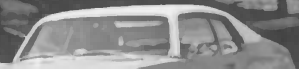
Lonaconing Historic District

Allegheny County

1982 Photo: Mark R. Edwards

Neg: Maryland Historical Trust, Annapolis, MD.

Queen Anne frame house, late 19th c., on N. side
of Furnace St. (A.K.A. Scotch Hill Rd) from
S.E. corner.



Lonaconing Historic District

Allegheny County

1982 Photo: Mark R. Edwards

Neg: Maryland Historical Trust, Annapolis, MD.

W. side of Douglas Ave. ascending the hillside

N. of Douglas' intersection with W. Main St.,

showing typical mid to late 19th c. double

houses with ornamentation and porch variations.



Lonaconing Historic District

Allegheny County

1982 Photo: Mark R. Edwards

Neg: Maryland Historical Trust, Annapolis, MD.

2-story frame house & additions with "Queen Anne" windows and corner turret, late 19th c., E. side of Church St., N. of Church's intersection with W. Main St.



Lonaconing Historic District

Alleghany County

1982 Photo: Mark R. Edwards

Neg: Maryland Historical Trust, Annapolis, MD.

Bennett brick house, 12 Church St. (E. side of st
N of its intersection with Main St), c.1872,
from S.W. corner showing W. entrance facade.

26/50



Lonaconing Historic District

Allegheny County

1982 Photo: Mark R. Edwards

Neg: Maryland Historical Trust, Annapolis, MD.

McCormick House (Queen Anne Brick House,
AL-VI-B-085), 86 E. Main St., from N.W. corner
showing N. entrance facade.

27/50



Lonaconing Historic District

Alleghany County

1982 Photo: Mark R. Edwards

Neg: Maryland Historical Trust, Annapolis, MD.
Board & batten double house, W. side of Beech-
wood St., just N. of its intersection with Foch
Dr., from S.E. corner showing S. gable end.

28/50



Lonaconing Historic District

Allegheny County

1982 Photo: Mark R. Edwards

Neg: Maryland Historical Trust, Annapolis, MD.
Methodist Church, E. side of Church St., N. of
its intersection with W. Main St., from S.W.
corner showing S. longitudinal elevation.



Lonaconing Historic District

Allegheny County

1982 Photo: Mark R. Edwards

Neg: Maryland Historical Trust, Annapolis, MD.

First Presbyterian Church (AL-VI-B-097), East
Main St. from SE corner, showing gable
entrance with steeple.

Presbyterian Church, LONACONING, MD.



Lonaconing Historic District

Allegheny County

1982 Photo: Mark R. Edwards

Neg: Maryland Historical Trust, Annapolis, MD.

First Presbyterian Church (AL-VI-B-097), S.W.

elevation, early 20th c. photograph from

postcard collection, courtesy of Mr. Feldstein.

31/50



Lonaconing Historic District

Alleghany County

1982 Photo: Mark R. Edwards

Neg: Maryland Historical Trust, Annapolis, MD.

North side of E. Main St., from intersection
of Alley No. 7 (R) looking west along East
Main (toward L).



Lonaconing Historic District, Allegany County
1982 Photo: Mark R. Edwards'

Neg: Maryland Historical Trust, Annapolis, MD.

Board & batten, 1-story house, mid 19th c.,
N. side Furnace St. (A.K.A. Scotch Hill Rd),
W. of its intersection with access road to
Pershing St., from S.E. corner , showing east
gable end.

33/50



Lonaconing Historic District

Alleghany County

1982 Photo: Mark R. Edwards

Neg: Maryland Historical Trust, Annapolis, MD.

Mid 19th c. duplexes along S. side of Railroad
St., showing NW corner of a board & batten
version situated on eastern corner of Railroad
St's intersection with alley.

34/50



Lonaconing Historic District

Alleghany County

1982 Photo: Mark R. Edwards

Neg: Maryland Historical Trust, Annapolis, MD.

Mid 19th c. duplexes along south side of
Railroad St., looking west toward inter-
section with Jackson St.

35/50



Lonaconing Historic District

Allegheny County

1982 Photo: Mark R. Edwards

Neg: Maryland Historical Trust, Annapolis, MD.

Late 19th c. duplex on s. side of Railroad St
on western corner of Railroad St.'s inter-
section with alley, from NW corner of house.

36/50



JACKSON
BOWLING

STREET

CLUB

Lonaconing Historic District, Allegany County
1982 Photo: Mark R. Edwards

Neg: Maryland Historical Trust, Annapolis; MD.
Storefront and brick warehouse on NW corner
of Union St.'s intersection with Railroad St.,
late 19th c., from SE corner showing east
entrance facade on Union St., & south eleva-
tion & warehouse on Railroad St. 37/50



Lonaconing Historic District

Alleghany County

1982 Photo: Mark R. Edwards

Neg: Maryland Historical Trust, Annapolis, MD.

Warehouse, late 19th c., Railroad St.,

South elevation showing entrance.



Lonaconing Historic District

Allegheny County

1982 Photo: Mark R. Edwards

Neg: Maryland Historical Trust, Annapolis, MD.

Brick hotel or boarding house, late 19th c.,

E. side of Star Alley just S. of its inter-

section with W. Main St., from NW corner
showing north gable end.

39/50



Lonaconing Historic District

Allegheny County

1982 Photo: Mark R. Edwards

Neg: Maryland Historical Trust, Annapolis, MD.

Frame, 2-story, Railroad Hotel, late 19th c.,
N. side of Railroad St., just E. of its inter-
section with Union St., showing southern
entrance facade.

40/50

Royal Crown
Cola

LAUNDER CENTER

Englewood
LAUNDRY



Lonaconing Historic District

Allegheny County

1982 Photo: Mark R. Edwards

Neg: Maryland Historical Trust, Annapolis, MD.

S. side of Main St., between intersections of
W. Main St. with Star Alley (L) and Ayers
Alley (R.center)



Lonaconing Historic District

Allegheny County

1982 Photo: Mark R. Edwards

Neg: Maryland Historical Trust, Annapolis, MD.

Lonaconing Furnace (AL-VI-B-004) on left and
Central High School (AL-VI-B-096, now a site),
from E. Main St. showing southwest elevations,

(Art Work of Allegheny County, the W.H. Parish

Publishing Co., Chicago: 1897, part 7.)



Lonaconing Historic District

Allegheny County

1982 Photo: Mark R. Edwards

Neg: Maryland Historical Trust, Annapolis, MD.

Brady Hotel (AL-VI-B-106) to R, looking south
down Union St. from its intersection with W.
Main, early 20th c. photograph (courtesy
M. Feldstein collection).



UNION STREET, LONACONING, MD.

Lonaconing Historic District

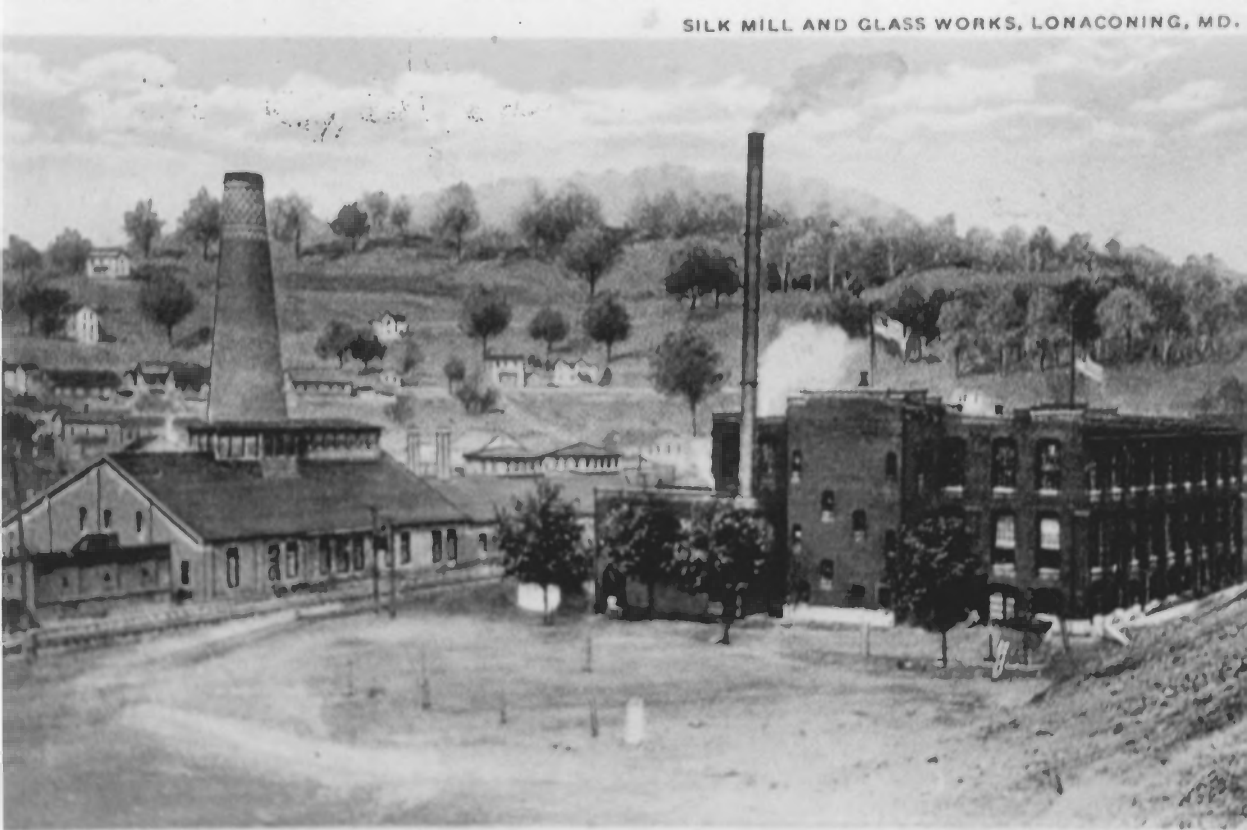
Allegheny County

1982 Photo: Mark R. Edwards

Neg: Maryland Historical Trust, Annapolis, MD.

Union St., Lonaconing, looking N. across bow-string truss bridge toward intersection of Union & W. Main St., early 20th c. photo (post-card view, courtesy M. Feldstein) 44/50

SILK MILL AND GLASS WORKS, LONACONING, MD.



Lonaconing Historic District

Allegheny County

1982 Photo: Mark R. Edwards

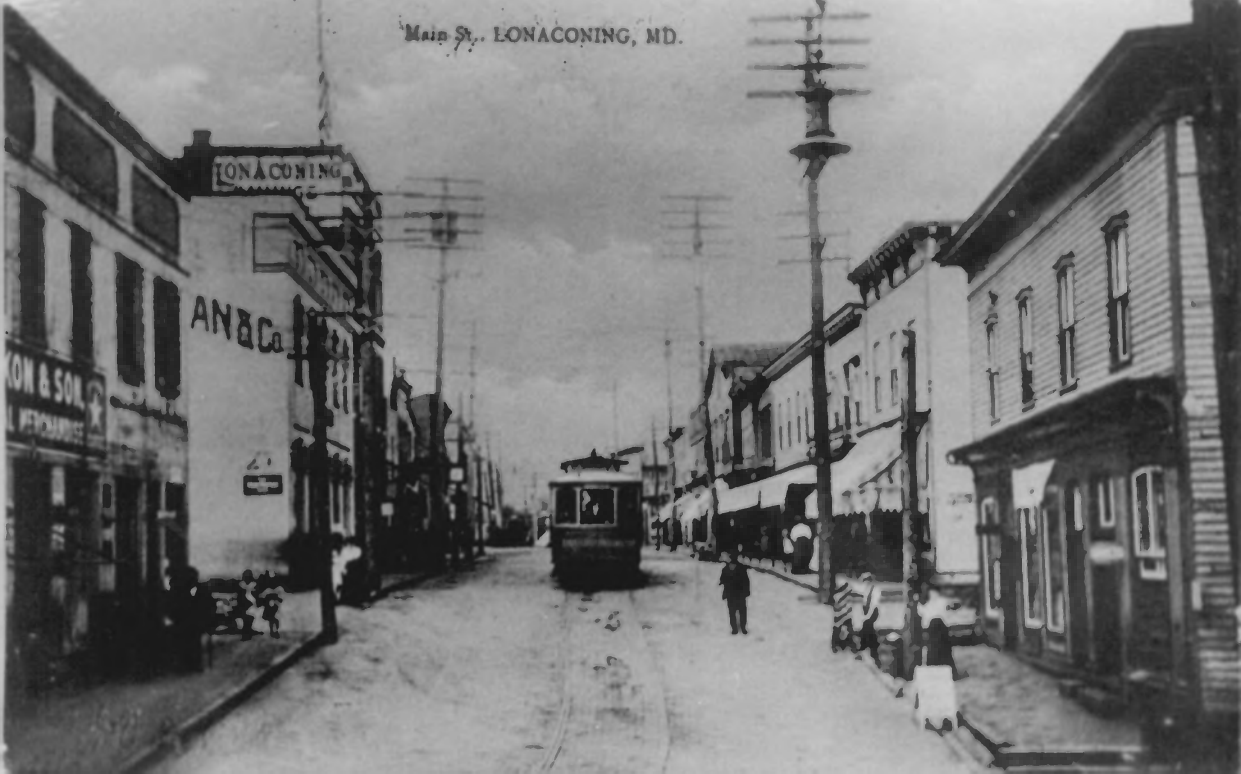
Neg: Maryland Historical Trust, Annapolis, MD.

Silk Mill and Glass Works, Lonaconing, early:

20th c. photograph (postcard view, courtesy

M. Feldstein collection)

Main St., LONACONING, MD.



Lonaconing Historic District, Allegany County
1982 Photo: Mark R. Edwards

Neg: Maryland Historical Trust, Annapolis, MD.

View of Main St., Lonaconing, looking E. past
the intersection of Union & W. Main Sts.

(Brady Hotel, AL-VI-B-106 is at R), early
20th c. photo (postcard view, courtesy of
M. Feldstein collection).

46/50



Lonaconing Historic District, Allegany County
1982 Photo: Mark R. Edwards

Neg: Maryland Historical Trust, Annapolis, MD.

View of Main St., Lonaconing, looking E. past
the intersection of Union & W. Main Sts.

(Brady Hotel, AL-VI-B-106 is at R), early
20th c. photo (postcard view, courtesy of
M. Feldstein collection).

47/50

LONA CONING, MD.



Lonaconing Historic District

Allegheny County

1982 Photo: Mark R. Edwards

Neg: Maryland Historical Trust, Annapolis, MD.

View of Lonaconing, late 19th century view.



Lonaconing Historic District

Alleghany County

1982 Photo: Mark R. Edwards

Neg: Maryland Historical Trust, Annapolis, MD.

AL-VI-B-095 Park Street Log Cabin,

23 Park Street.