

FEB 26 1987

United States Department of the Interior
National Park Service

National Register of Historic Places
Continuation Sheet

Section number HN-9 Page 1

SITE HN-9

NAME Blake Ranch House

LOCATION One mile west of the Camp Crook Road,
Gustave vicinity, Harding County (063),
South Dakota (046)

OWNER Clark Blake
Camp Crook Route
Belle Fourche, South Dakota 57717

CLASSIFICATION Building, private, NA acquisition,
unoccupied, restricted access, vacant

DESCRIPTION Fair condition, unaltered, original site

The Blake Ranch House is located fourteen miles south of Camp Crook, and about four miles north of the abandoned town of Gustave in western Harding County. The house which sits amidst a grouping of mature elm trees is abandoned as are the nearby outbuildings.

A large rectangle, this ranch house is of concrete block construction. The house has a steeply pitched hipped roof with three large gabled dormers and a large hipped dormer on the south (rear) facade, all clad with wood shingles. Two large red brick chimneys rise from the ends of the ridge line. The house sits on a raised foundation and has a full basement.

A hip-roofed porch wraps around the front of the house and is supported by ten round columns. Another hip-roofed porch spans the south (rear) facade. It is supported by four square wooden columns.

Fenestration includes a variety of shapes and arrangements of windows, ranging from single double-hung windows in the dormers on the east and west facades, to an elaborate bay window in the west facade. The majority of windows are large rectangular double-hung. No fenestral changes have been made to the house.

United States Department of the Interior
National Park Service

National Register of Historic Places
Continuation Sheet

Section number HN-9 Page 2

The interior of the house is divided into a sitting room, living room, dining room, kitchen, pantry, foyer and two bedrooms. The staircase to the second floor has a double landing that is entered from the dining room and the rear foyer. It has an elaborately carved newell post and delicately turned posts support the rail in the balustrade. The interior woodwork is oak and the window surrounds, molding, and door surrounds are intact. The interior walls of the rooms are primarily painted in dark colors such as blue and turquoise. The high ceilings are plastered and painted tan or white. The second-story was divided into four bedrooms.

SIGNIFICANCE 1900-present, architecture

DATE: ca. 1910

BUILDER: Not available

The Blake Ranch house is architecturally significant to rural Harding County as a fine example of a concrete block house that was popularized by William A. Radford. One of the early atlases of the area dated 1906 shows the property as belonging to a G. Davis. Little else of the history is known.

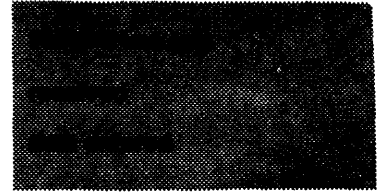
Cement and concrete block houses were popularized throughout the United States in the early years of the twentieth century through the planning books available from The Radford Architectural Company in New York and Chicago. Plans for all types of cement and concrete block houses with complete sets of blueprints and directions for construction could be purchased from the company for ten to fifteen dollars. In addition, the company also published books on barns and houses. (Radford 1908A, 1908B, 1909)

In rural South Dakota however, this type of structure is very rare with only a few known examples. In addition, it is very unusual to locate a house of this age that has not been altered. As the house has not undergone any structural or decorative changes since its construction, its architectural integrity remains intact.

Although it is abandoned and shows signs of deterioration, the Blake Ranch house is the finest example of concrete block construction in rural Harding County.

**United States Department of the Interior
National Park Service**

**National Register of Historic Places
Inventory—Nomination Form**



Continuation sheet

Item number HN-9

Page 3

QUADRANGLE NAME Gustave, SD UTM 13/581880/5021650

QUADRANGLE SCALE 1:24,000 ACREAGE Less than one

VERBAL BOUNDARY DESCRIPTION

The boundary of the nominated property is considered to be a set of intersecting imaginary lines that lie ten feet from the exterior walls of the house in all directions. The site is located in the SW quarter of the SW quarter of Section 13, Township 16 North, Range 1 East of Harding County in South Dakota.

**United States Department of the Interior
National Park Service**

**National Register of Historic Places
Inventory—Nomination Form**

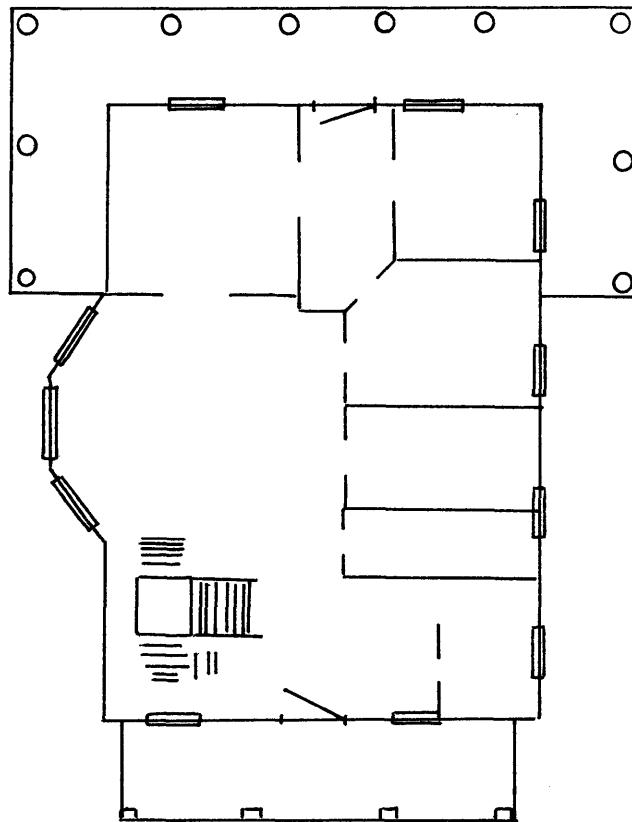
For NPS use only
received
date entered

Continuation sheet

Blake Ranch House

Item number HN-9

Page 4



United States Department of the Interior
National Park Service

National Register of Historic Places
Inventory—Nomination Form

For NPS use only
received
date entered

Continuation sheet Blake Ranch House

Item number HN-9

Page 5

