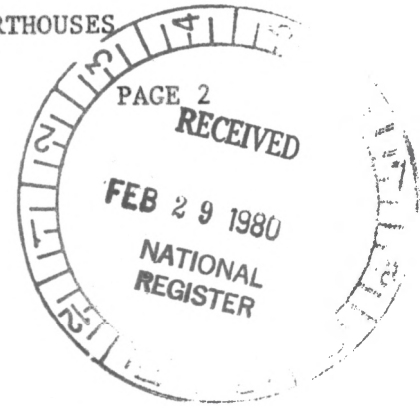


THEMATIC NATIONAL REGISTER NOMINATION - GEORGIA COURTHOUSES

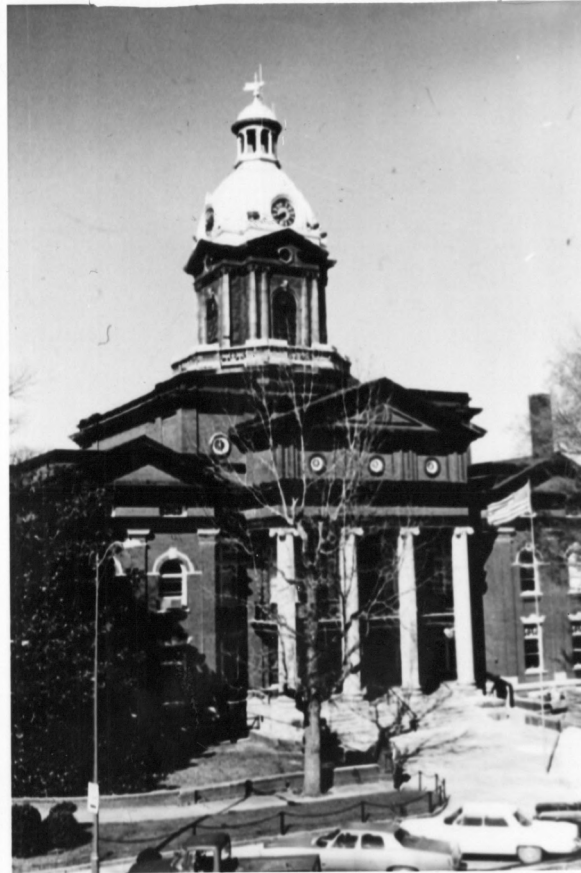
ARCHITECTURAL SURVEY FORM COWETA COUNTY COURTHOUSE



SIGNIFICANCE:

See general statement of significance on the architect, J. W. Golucke.

This courthouse is one of J. W. Golucke's most ambitious structures. In 1975 it was remodeled in such excellent taste that it serves the current judicial needs of the county while retaining all of the important architectural and interior design features of the original plan.



COWETA COUNTY COURTHOUSE

MAILING ADDRESS:

Board of County Commissioners
Coweta County Courthouse
Courthouse Square
Newnan, Georgia 30263

SEP 18 1980