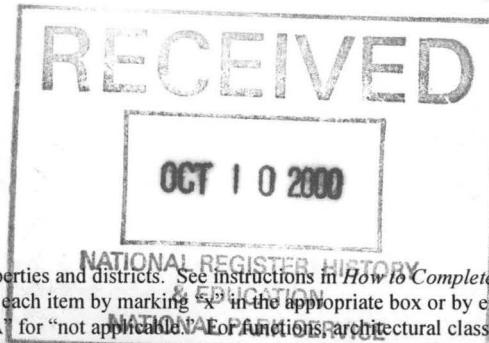


United States Department of the Interior  
National Park Service

National Register of Historic Places  
Registration Form

This form is for use in nominating or requesting determinations for individual properties and districts. See instructions in *How to Complete the National Register of Historic Places Registration Form* (National Register Bulletin 16A). Complete each item by marking "X" in the appropriate box or by entering the information requested. If an item does not apply to the property being documented, enter "N/A" for "not applicable." For functions, architectural classification, materials, and areas of significance, enter only categories and subcategories from the instructions. Place additional entries and narrative items on continuation sheets (NPS Form 10-900a). Use a typewriter, word processor, or computer, to complete all items.



1319

1. Name of Property

historic name Russellville Public Library

other names/site number N/A

2. Location

street & number 114 East Third Street

☐ not for publication

city or town Russellville

☐ vicinity

state AR

code AR

county Pope

code 115

zip code 72801

3. State/Federal Agency Certification

As the designated authority under the National Historic Preservation Act, as amended, I hereby certify that this ☒ nomination ☐ request for determination of eligibility meets the documentation standards for registering properties in the National Register of Historic Places and meets the procedural and professional requirements set for in 36 CFR Part 60. In my opinion, the property ☒ meets ☐ does not meet the National Register criteria. I recommend that this property be considered significant ☐ nationally ☐ statewide ☒ locally. (See continuation sheet for additional comments.)

Cathie Matthews

Signature of certifying official/Title

9/28/00

Date

Arkansas Historic Preservation Program

State or Federal agency and bureau

In my opinion, the property ☒ meets ☐ does not meet the National Register criteria. ☐ See Continuation sheet for additional comments.)

Signature of certifying official/Title

Date

State or Federal agency and bureau

4. National Park Service Certification

I hereby certify that the property is:

☒ entered in the National Register.

☒ See continuation sheet

☐ determined eligible for the National Register.

☐ See continuation sheet

☐ determined not eligible for the National Register.

☐ removed from the National Register.

☐ other, (explain):

(for) Signature of the Keeper

Arch D. Pope

Date of Action

11/20/00

**5. Classification****Ownership of Property**

(Check as many boxes as apply)

- ☐ private  
☒ public-local  
☐ public-State  
☐ public-Federal

**Category of Property**

(Check only one box)

- ☒ building(s)  
☐ district  
☐ site  
☐ structure  
☐ object

**Number of Resources within Property**

(Do not include previously listed resources in count.)

Contributing

Noncontributing

1

buildings

sites

structures

objects

1

Total

**Name of related multiple property listing**

(Enter "N/A" if property is not part of a multiple property listing.)

**Number of Contributing resources previously listed  
in the National Register****6. Function or Use****Historic Functions**

(Enter categories from instructions)

EDUCATION/Library

**Current Functions**

(Enter categories from instructions)

VACANT/NOT IN USE

**7. Description****Architectural Classification**

(Enter categories from instructions)

Colonial Revival

**Materials**

(Enter categories from instructions)

foundation CONCRETE

walls BRICK

roof ASPHALT

other

**Narrative Description**

(Describe the historic and current condition of the property on one or more continuation sheets.)

(See Continuation Sheet)

United States Department of the Interior  
National Park Service

## National Register of Historic Places Continuation Sheet

Section number 7 Page 1

---

### SUMMARY

Built in late 1936 and early 1937, the old Russellville Public Library is a one-story frame construction building with brick veneer; it is roofed with asphalt shingles over the original wooden shingles. The Colonial Revival-style structure, located at 114 East Third Street, was the City of Russellville's sole public library facility for 39 years. The library has been used for storage since 1976. There are currently plans to restore the building for use as a community meeting room and for community library programs.

### ELABORATION

Built in late 1936 and early 1937 in the 100 block of East Third Street, the old Russellville Public Library is a one-story Colonial Revival-style building. The building stands on a continuous brick foundation on a 30X 50foot lot. The building served as the city's sole public library facility until April 1976 when a new library building opened next door at 116 East Third Street. O.S. Nelson, a local contractor, drew up plans for the Old Russellville Public Library. Leon Reed was the construction supervisor. Exterior dimensions of the building are 26 feet 4 ½ inches by 47 feet 2 inches (1,244 square feet). It is a Works Progress Administration funded building of frame construction with brick veneer. It is roofed with wooden shingles, with at least two layers of asphalt shingles that have been installed over the original wood shingles.

#### North/Front Elevation

The front or north elevation features a typical Colonial Revival entryway with supporting pilasters. Access to the building is gained through a six-paneled wooden door. The doorway is crowned by a single-pane transom light, which is covered by a non-historic metal awning. The original wooden door has a book return drop slot above the bottom two panels of the door. The doorway is accented on each side by historic lamp fixtures and also a bronze WPA plaque with the date 1936 on the western side of the door. There has been an addition of a metal screen door (date unknown) in front of the original wooden one. Near the apex of the roof there is a concrete inset that reads "RUSSELLVILLE/ PUBLIC/ LIBRARY". The concrete steps are flanked by a wrought iron railing, which leads up to the doorway. On each side of the entrance there are two double hung wooden windows on the front elevation. Each window has a nine over nine- pane configuration.

#### West/ Side Elevation

The west elevation features five original twelve over twelve-pane windows. It also features the base of the original red brick chimney, however the top part is no longer remaining and the date of its removal is undocumented.

#### South/Rear Elevation

The windows on the south elevation differs from those on the west and east elevations. The south elevation is fenestrated with three, six over six light windows.

**East/Side Elevation**

The east elevation faces the new library and is very similar to the west elevation. There are five, twelve over twelve light windows located on this side. This elevation and all others maintain original windows.

---

**Interior**

The interior of the building consists of one large room with two smaller rooms – a restroom and a reading/work area both located at the rear. Located to the side of the entrance there are two plaques. One plaque lists the library's founding members and the other plaque is dedicated to Sue Catherine Deaton whose family donated the land for the building in her honor. The interior walls display their original wall material and are covered with plaster. The trim around the ceiling and floor base is constructed of wood and is in excellent condition. The floor finish is vinyl tile laid directly on the 1x12-inch floor sheathing. The ceiling tile is fiber composition fastened directly to the underside to the roof joists.

The sink and stool in the restroom are both vintage with steel piping above the floor. The buildings lighting is provided by historic wall- mounted adjustable reading lamps. There are also florescent pendant-type office light fixtures that hang from the ceiling that were added at a later date. The original electrical wiring was installed according to the accepted standards of 1936 and does not meet the building code requirements of today.

The lower chimney support is not very deep, leading to the assumption that the chimney was used as a vent for a coal stove. The stove was replaced by a heating unit (date unknown), that is located in the building crawl- space with air delivery through a network of floor vents.

**Integrity**

Although there have been some minor alterations to the building, the basic plan of the library's exterior and interior remains the same as when the building was completed in 1937. The exterior of the building displays its integrity with the excellent condition of the brick and also the original door and windows. The condition of the brick veneer is generally very good. The window ledges are in good condition showing very little chipping of the mortar or brick. Of the foundation vents, five are original units, the remaining spaces are covered with sheet metal but new louvers have been installed in the two front vent spaces. The original construction included a chimney, which was removed (date unknown). There has also been an addition of a non-historic awning over the entryway. Other than these few alterations the exterior of the building still stands in its original form. The interior is also very intact with the exception of the stove being removed and the addition of florescent lighting. This building stands not only as a wonderful example of Colonial Revival architecture, but also an excellent example of a WPA building and the American public's desire for knowledge.

**8. Statement of Significance****Applicable National Register Criteria**

(Mark "x" in one or more boxes for the criteria qualifying the property

For National Register listing.)

- ☒ **A** Property is associated with events that have made a significant contribution to the broad patterns of our history.
- ☐ **B** Property is associated with the lives of persons significant in our past.
- ☒ **C** Property embodies the distinctive characteristics of a type, period, or method of construction or represents the work of a master, or possesses high artistic values, or represents a significant and distinguishable entity whose components lack individual distinction.
- ☐ **D** Property has yielded, or is likely to yield, information important in prehistory or history.

**Criteria Considerations**

(Mark "x" in all the boxes that apply.)

Property is:

- ☐ **A** owned by a religious institution or used for religious purposes.
- ☐ **B** removed from its original location.
- ☐ **C** moved from its original location.
- ☐ **D** a cemetery.
- ☐ **E** a reconstructed building, object, or structure.
- ☐ **F** a commemorative property
- ☐ **G** less than 50 years of age or achieved significance within the past 50 years.

**Levels of Significance** (local, state, national)

Local

**Areas of Significance** (Enter categories from instructions)

A (OTHER)—Association with Works Progress Administration

C—ARCHITECTURE

**Period of Significance**

1937-1950

**Significant Dates**

1937

**Significant Person** (Complete if Criterion B is marked)

N/A

**Cultural Affiliation** (Complete if Criterion D is marked)

N/A

**Architect/Builder**

Nelson, O.S., local contractor

Reed, Leon, construction supervisor

**Narrative Statement of Significance**

(Explain the significance of the property on one or more continuation sheets.)

(See Continuation Sheet)

**9. Major Bibliographical References****Bibliography**

(Cite the books, articles, and other sources used in preparing this form on one or more continuation sheets.)

(See Continuation Sheet)

**Previous documentation on file (NPS):**

- ☐ preliminary determination of individual listing (36 CFR 67) has been requested
- ☐ previously listed in the National Register
- ☐ Previously determined eligible by the National Register
- ☐ designated a National Historic Landmark
- ☐ recorded by Historic American Buildings Survey

**Primary location of additional data:**

- ☒ State Historic Preservation Office
- ☐ Other State Agency
- ☐ Federal Agency
- ☐ Local Government
- ☐ University
- ☐ Other

Name of repository:

# \_\_\_\_\_

Arkansas Historic Preservation Program

---

☐ recorded by Historic American Engineering  
Record # \_\_\_\_\_



United States Department of the Interior  
National Park Service

## National Register of Historic Places Continuation Sheet

Section number 8 Page 1

---

### SUMMARY

The old Russellville Public Library building at 114 East Third Street is being nominated with local significance under **Criterion A** for its association with the Works Progress Administration and under **Criterion C** for its Colonial Revival Architecture.

### ELABORATION

P.C. Holledger built the first house in the area around present day Russellville, which at that time was called Prairie. The town was named Russellville after Dr. Thomas Russell, an English doctor who purchased the home in 1835. By 1842 the village had grown and been named for Dr. Russell. Russellville, incorporated in 1870, and became the county seat of Pope County in 1887. Russellville begin its modern day improvements around 1908 with the building of concrete sidewalks, paved streets and street lamps. At that time there were three weekly papers, coal mining companies, a small electric light plant and the railroad. By 1920 Russellville was a thriving town with a population above five thousand. The city was home to the largest horse and mule market in the state; Russellville also had three banks, a modern creamery, a large foundry and iron works, roller flour mill, a modern hospital, city band and handsome well-kept homes. Russellville was considered a metropolitan area of the state. However, there was no public library building.

From July 1885 to 1924, the town's public library consisted of a collection of books ranging in number from less than 100 to more than 500. The books were housed in private homes and unused space in downtown business buildings. The library effort begin in 1885 when the Excelsior Club, a group of civic minded young men, began a fund-raising drive to raise money for a small collection of books. The books were checked out for a fee of 5 cents a week and the money raised was used to purchase additional books. In 1889 Professor A.E. Lee, superintendent of Russellville schools, purchased books for the high school and combined these with the Excelsior Club collection.

After Lee's tenure had expired the books were put into private homes and could be checked out by anybody. A Public Library Association was organized in May 1899 to oversee the collection of books. The collection was moved to a room above a downtown business and Luther Turnbow became the first librarian. The library opened the first week of June 1899. In 1904 the collection was moved to Wiggs Drug Store.

By March of 1905 the San Souci Club, a group of local women, had taken over the library. The club furnished a librarian who was on duty every Tuesday from 3-5 P.M. This arrangement lasted until December of that year when the books were moved to the home of James A. Miller. Shortly later the collection, now more than 600 books, was moved to the home of Library Association President Mrs. W.L. Oates.

In 1906 efforts were made to obtain a Carnegie Library. This plan failed when the amount of money needed to buy land for the building could not be raised. The books continued to be moved from place to place until the start of World War I.

Russellville had no public Library collection during the World War I years, 1917-1919, when the Russellville Public Library collection was added to books collected in the county that were all sent to Camp Pike (Pulaski County) for the benefit of the soldiers. The books were returned after the war with the addition of other books that had been donated to the Camp Pike collection. Upon their return the books were stored for several months before finally being placed in a room at the Central Presbyterian Church.

In 1923 Reverend Robert Hodgson started a drive for a public library building. On February 8, 1924 a small building (no longer in existence) on the Central Presbyterian Church property at West Main Street and North Denver Avenue began use as a public library building. The library was open Monday-Saturday and staffed with volunteers.

By 1936 public demand for a larger, more permanent facility had grown. Local citizens turned to the help of the Works Progress Administration. The Works Progress Administration furnished \$6,000 of the construction costs. Community fund-raising events raised an additional \$2,151 for construction and furnished the building.

Relatives of a former Russellville mayor, Jeremiah Munday, carried out his spirit of public service and donated the 30x50-foot lot where the library building was constructed. The children of Mrs. Sue Munday Deaton, the former mayor's sister, donated the land for the library in her honor. The building was designed by O.S. Nelson a local contractor. Another local, Leon Reed acted as construction supervisor. The building was started in 1936 and was completed in October 1937.

Mrs. M.C. Hickman was the first paid librarian. She retired in 1958 and was replaced by Mrs. Wetzel, who was the first trained librarian at the library. Each reader was charged \$1 a year for reading privileges until December 1957 when Pope County became part of the Arkansas River Valley Regional Library System. In 1985 the library pulled out of the regional system to start an independent county system.

The building was used as a library until 1976 when demand outgrew the small building and a new library was built next door at 116 East Third Street. Since that time the old Russellville Public Library has been used as storage for the new one.

Russellville has grown and prospered in the 166 years since that first house was built. The city is today a major industrial, business, transportation, and educational hub with a population of about 30,000 people. Arkansas Tech University is located in Russellville and serves as a major institution of the city.

### Significance

The Old Russellville Public Library building is being nominated with local significance under both **Criterion A** for its association with the Works Progress Administration and **Criterion C** as a Colonial-Revival style public building.



Russellville Public Library  
Name of Property

Pope County  
County and State

United States Department of the Interior  
National Park Service

## National Register of Historic Places Continuation Sheet

Section number 9 Page 1

---

### BIBLIOGRAPHY

Brown, Mattie, "History of Public Libraries in Russellville, Pope County, Arkansas." Pope County Historical Association Quarterly, Volume 5, Number 4 (1971): Pages 62-64

Pope County Historical association of Russellville, Arkansas, "History of Pope County, Arkansas" Volume 1, Published 1979, Hunter Publishing Co., Winston Salem, North Carolina

"Russellville Libraries," Russellville Centennial 1870-1970, from book "Arrows to Atoms," Russellville Public Library, Russellville, Arkansas.

**10. Geographical Data**Acreage of Property Less than 1 acre**UTM References**

(Place additional UTM references on a continuation sheet.)

1	<u>15</u>	<u>487880</u>	<u>3903410</u>
	Zone	Easting	Northing
2	<u>          </u>	<u>          </u>	<u>          </u>

3	<u>          </u>	<u>          </u>	<u>          </u>
	Zone	Easting	Northing
4	<u>          </u>	<u>          </u>	<u>          </u>

☐ See continuation sheet**Verbal Boundary Description**

(Describe the boundaries of the property on a continuation sheet.)

A part of Lot Five (5), in block Sixty-one (61), of J.L. Shinn's Addition to the Town (now City) of Russellville, Arkansas, more particularly described as beginning at the northeast corner of said Lot Five (5), Block Sixty-one (61), and running south Fifty (50) feet; thence West Thirty (30) feet; thence North Fifty (50) feet; thence east Thirty (30) feet to the point of beginning.

**Boundary Justification**

(Explain why the boundaries were selected on a continuation sheet.)

The boundary includes all land historically associated with the library.

**11. Form Prepared By**name/title Laura L. Schull, Heritage Room Assistantorganization Pope County Library Systemdate June 23, 2000street & number 116 East Third Streettelephone (501) 968-4368city or town Russellvillestate Arkansaszip code 72801**Additional Documentation**

Submit the following items with the completed form:

**Continuation Sheets****Maps**A **USGS map** (7.5 or 15 minute series) indicating the property's locationA **Sketch map** for historic districts and properties having large acreage or numerous resources.**Photographs**Representative **black and white photographs** of the property.**Additional items**

(Check with the SHPO or FPO for any additional items.)

**Property Owner**

(Complete this item at the request of SHPO or FPO.)

name Pope County Library Systemstreet & number 116 E. Third St.telephone 501-968-4368city or town Russellvillestate ARzip code 72801

**Paperwork Reduction Act Statement:** This information is being collected for applications to the National Register of Historic Places to nominate properties for listing or determine eligibility for listing, to list properties, and to amend existing listing. Response to this request is required to obtain a benefit in accordance with the National Historic Preservation Act, as amended (16 U.S.C. 470 *et seq.*)

**Estimated Burden Statement:** Public reporting burden for this form is estimated to average 18.1 hours per response including time for reviewing instructions, gathering and maintaining data, and completing and reviewing the form. Direct comments regarding this burden estimate or any aspect of this form to the Chief, Administrative Services Division, National Park Service, P. O. Box 37127, Washington, DC 20013-7127; and the Office of Management and Budget, Paperwork Reduction Projects (1024-0018), Washington, DC 20303.

**United States Department of the Interior  
National Park Service**

**National Register of Historic Places  
Continuation Sheet**

Section number \_\_\_\_\_ Page \_\_\_\_\_

---

**SUPPLEMENTARY LISTING RECORD**

**NRIS Reference Number:** 00001319

**Date Listed:** 11/20/00

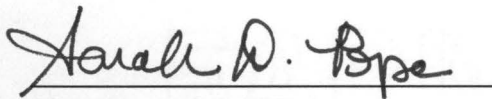
**Property Name:** Russellville Public Library

**County:** Pope

**State:** AR

**Multiple Name:** N/A

-----  
This property is listed in the National Register of Historic Places in accordance with the attached nomination documentation subject to the following exceptions, exclusions, or amendments, notwithstanding the National Park Service certification included in the nomination documentation.

  
**Signature of the Keeper**

11/20/00  
**Date of Action**

=====

**Amended Items in Nomination:**

An amendment is made to add the Areas of Significance **Politics/Government** and **Social History** for the property's association with the Federal Works Project Administration (WPA) program of the 1930s. The WPA partially funded this building which was the first permanent public library in the community of Russellville, Arkansas.

This information was confirmed with Kara Mills of the Arkansas SHPO.

-----  
**DISTRIBUTION:**

**National Register property file**

**Nominating Authority (without nomination attachment)**

UNITED STATES DEPARTMENT OF THE INTERIOR  
NATIONAL PARK SERVICE

NATIONAL REGISTER OF HISTORIC PLACES  
EVALUATION/RETURN SHEET

REQUESTED ACTION: NOMINATION

PROPERTY Russellville Public Library  
NAME:

MULTIPLE  
NAME:

STATE & COUNTY: ARKANSAS, Pope

DATE RECEIVED: 10/10/00 DATE OF PENDING LIST: 10/23/00  
DATE OF 16TH DAY: 11/08/00 DATE OF 45TH DAY: 11/24/00  
DATE OF WEEKLY LIST:

REFERENCE NUMBER: 00001319

REASONS FOR REVIEW:

APPEAL: N DATA PROBLEM: N LANDSCAPE: N LESS THAN 50 YEARS: N  
OTHER: N PDIL: N PERIOD: N PROGRAM UNAPPROVED: N  
REQUEST: N SAMPLE: N SLR DRAFT: Y NATIONAL: N

COMMENT WAIVER: N

☒ ACCEPT ☐ RETURN ☐ REJECT 11/20/00 DATE

ABSTRACT/SUMMARY COMMENTS:

The Russellville Public Library is eligible for the National Register under Criteria A and C for architecture, politics/government, and social history. Partially funded through the WPA, the construction of the library occurred in 1937. The library is a good local example of the Colonial Revival and has been continuously used by the local community in different capacities since its construction.

RECOM./CRITERIA A, C

REVIEWER Sarah Pope DISCIPLINE Historian

TELEPHONE 202/343-9534 DATE 11/20/00

DOCUMENTATION see attached comments Y/☒N see attached SLR ☒Y/N





1. Russellville Public Library
2. Pope Co., AR
3. Zac Cothren
4. July 2000
5. Arkansas Historic Preservation Program
6. North Facade. (View from South)
7. 1





1. Russellville Public Library
2. Pope Co, AR
3. Zac Cothren
4. July 2000
5. Arkansas Historic Preservation Program
6. WPA plaque North elevation - view from South
7. 3







1. Russellville Public Library
2. Pope Co., AR
3. Zac Cothren
4. July 2000
5. Arkansas Historic Preservation Program
6. Light fixture beside front door North elevation  
(view from South)
7. 2



1. Russellville Public Library
2. Pope Co., AR
3. Zac Cothren
4. July 2000
5. Arkansas Historic Preservation Program
6. West Facade - View from East
7. 4





1. Russellville Public Library
2. Pope Co., AR
3. Zac Cothren
4. July 2000
5. Arkansas Historic Preservation Program
6. East Facade - View from the West
7. S



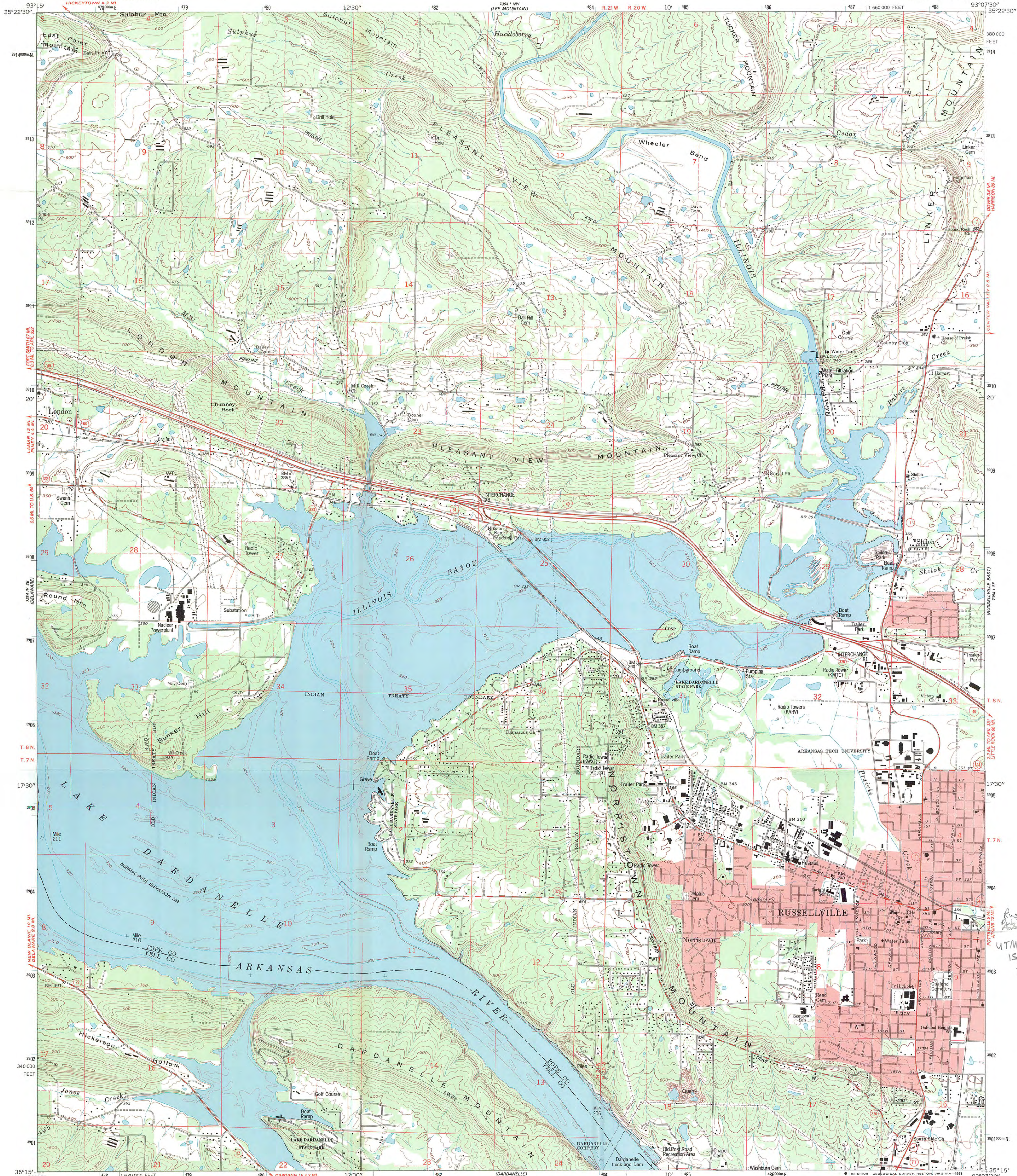
RUSSELLVILLE LIBRARY  
ERECTED 1937  
MEMBERS OF BOARD  
MRS. JESS M. MARTIN PRES.  
MRS. J. M. HENRY VICE PRES.  
MRS. DON HARVEY SEC.  
MRS. LLOYD REED TREAS.  
MISS MAE RUSSELL  
MRS. W. T. CHRISTIAN  
MRS. T. R. RYE  
MRS. CHARLEY E. COLE  
MRS. JOE GOODWIN  
MRS. R. R. COOPER  
MRS. D. A. GIBSON  
MRS. ETHEL THIBAUT  
MRS. E. C. FOWLES  
BUILDING COMMITTEE  
MR. JOHN G. BURKLE CHM.  
MR. A. SHAYS  
MR. H. WOOD

1. Russellville Public Library
2. Pope Co., AR
3. Zac Cothren
4. July 2000
5. Arkansas Historic Preservation Program
6. Interior of entryway
7. 6

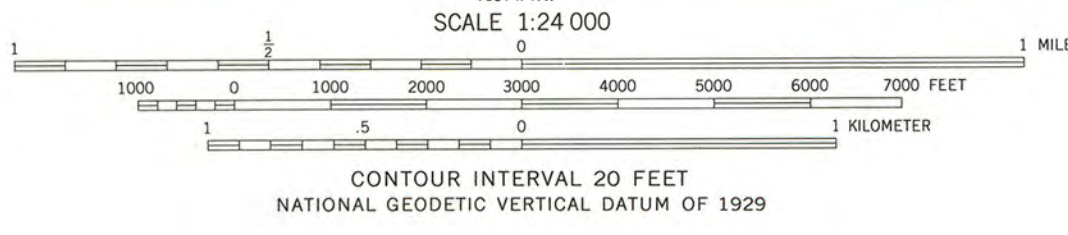
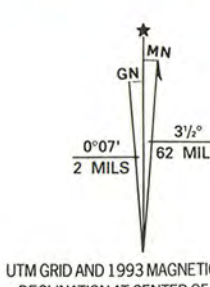


UNITED STATES  
DEPARTMENT OF THE INTERIOR  
GEOLOGICAL SURVEY

RUSSELLVILLE WEST QUADRANGLE  
ARKANSAS  
7.5 MINUTE SERIES (TOPOGRAPHIC)



Produced by the United States Geological Survey  
in cooperation with Arkansas Geological Commission  
Control by USGS and NOS/NOAA  
Topography by photogrammetric methods from aerial photographs  
taken 1958. Field checked 1962-63. Revised from aerial photographs  
taken 1989. Field checked 1992. Map edited 1993  
Projection and 10,000-foot grid ticks: Arkansas coordinate  
system, north zone (Lambert conformal conic)  
1000-meter Universal Transverse Mercator grid ticks, zone 15, shown in blue  
1927 North American Datum (NAD 27)  
North American Datum of 1983 (NAD 83) is shown by dashed corner ticks  
The values of the shift between NAD 27 and NAD 83 for 7.5-minute  
intersections are given in USGS Bulletin 1875  
There may be private inholdings within the boundaries of  
the National or State reservations shown on this map  
Red tint indicates areas in which only landmark buildings are shown  
Unlabeled wells are gas wells  
Fine red dashed lines indicate selected fence and field lines where  
generally visible on aerial photographs. This information is unchecked



THIS MAP COMPLIES WITH NATIONAL MAP ACCURACY STANDARDS  
FOR SALE BY U.S. GEOLOGICAL SURVEY, DENVER, COLORADO 80225, OR RESTON, VIRGINIA 22092  
AND ARKANSAS GEOLOGICAL COMMISSION, LITTLE ROCK, ARKANSAS 72204  
A FOLDER DESCRIBING TOPOGRAPHIC MAPS AND SYMBOLS IS AVAILABLE ON REQUEST



ROAD CLASSIFICATION  
Primary highway, hard surface  
Secondary highway, hard surface  
Light-duty road, hard or improved surface  
Unimproved road  
Interstate Route  
U. S. Route  
State Route

RUSSELLVILLE WEST, ARK.  
35093-C2-TF-024

1993

DMA 7354.1 SW-SERIES V884

Russellville  
Public Library  
Ark. Co. AR  
UTM  
15/487880  
3703410





# The Department of Arkansas Heritage

**WE LOVE TO TELL  
THE STORY.**

Mike Huckabee, Governor  
Cathie Matthews, Director

Arkansas Arts Council

Arkansas Natural Heritage  
Commission

Arkansas Territorial Restoration

Delta Cultural Center

Old State House Museum



## Arkansas Historic Preservation Program

1500 Tower Building  
323 Center Street  
Little Rock, AR 72201  
(501)324-9880  
fax: (501)324-9184  
tdd: (501)324-9811

e-mail:

[info@arkansaspreservation.org](mailto:info@arkansaspreservation.org)

website:

[www.arkansaspreservation.org](http://www.arkansaspreservation.org)

September 28, 2000

Carol D. Shull  
Chief of Registration  
United State Department of the Interior  
National Register of Historic Places  
National Park Service  
800 North Capitol Street, Suite 250  
Washington, D.C. 20002

RE: Russellville Public Library- Russellville, Pope County, Arkansas.

Dear Carol:

We are enclosing for your review the nomination of the above-referenced property. The Arkansas Historic Preservation Program has complied with all applicable nominating procedures and notification requirements in the nomination process.

Thank you for your consideration in this matter.

Sincerely,

Cathie Matthews  
State Historic Preservation Officer

CM:zc

Enclosures

An Equal Opportunity Employer

