



665

United States Department of the Interior
National Park Service

National Register of Historic Places
Registration Form

This form is for use in nominating or requesting determinations for individual properties and districts. See instructions in How to Complete the National Register of Historic Places Registration Form (National Register Bulletin 16A). Complete each item by marking "x" in the appropriate box or by entering the information requested. If any item does not apply to the property being documented, enter "N/A" for "not applicable." For functions, architectural classification, materials, and areas of significance, enter only categories and subcategories from the instructions. Place additional entries and narrative items on continuation sheets (NPS Form 10-900a). Use a typewriter, word processor, or computer, to complete all items.

1. Name of Property

historic name Searles Hill Cemetery

other names/site number South Yard, South Cemetery

2. Location

street & number Searles Hill Road N/A not for publication

city or town Phillipston N/A vicinity

state Massachusetts code MA county Worcester code 027 zip code 01331

3. State/Federal Agency Certification

As the designated authority under the National Historic Preservation Act of 1986, as amended, I hereby certify that this nomination request for determination of eligibility meets the documentation standards for registering properties in the National Register of Historic Places and meets the procedural and professional requirements set forth in 36 CFR Part 60. In my opinion, the property meets does not meet the National Register Criteria. I recommend that this property be considered significant nationally statewide locally. (See continuation sheet for additional comments.)

Brona Simon

August 3, 2011

Signature of certifying official/Title Brona Simon, State Historic Preservation Officer
Massachusetts Historical Commission

Date

State or Federal agency and bureau

In my opinion, the property meets does not meet the National Register criteria. (See continuation sheet for additional Comments.)

Signature of certifying official/Title

Date

State or Federal agency and bureau

4. National Park Service Certification

I, hereby certify that this property is:

- entered in the National Register See continuation sheet.
- determined eligible for the National Register See continuation sheet.
- determined not eligible for the National Register
- removed from the National Register
- other (explain):

Signature of the Keeper

Date of Action

for

Edson H. Beall

9.15.11

United States Department of the Interior
National Park Service

National Register of Historic Places Continuation Sheet

Section Number 7 Page 1

Searles Hill Cemetery
Phillipston, Worcester County, MA

NARRATIVE DESCRIPTION

Searles Hill Cemetery is the oldest known burial place in the town of Phillipston, having been established ca. 1777. In addition to Searles Hill, the town owns two other cemeteries—Center Cemetery (1803; NR 1999) and Valley Cemetery (1853)—and four small burial grounds remain in private ownership within the town. Located at the southern end of Phillipston near the east-west road linking Templeton to Petersham, Searles Hill Cemetery began as a place of interment for settlers of Templeton's West Precinct. Rectangular in shape and punctuated with rows of simple tablet-style markers, it typifies the design and layout of a late 18th-century New England burial ground. Maintained by the town's Cemetery Commission, Searles Hill Cemetery covers 3.3 acres and includes many distinctive gravestones, several reflecting the work of local artisans, and marking the interments of people associated with late 18th century and 19th century Phillipston.

Location & Setting

The Searles Hill Cemetery lies in the southern part of the town of Phillipston at the southern foot of Searles Hill, near the intersection of Old Queen Lake Road and Searles Hill Road.¹ Phillipston Center stands approximately 1.5 miles to the north of the cemetery at the far end of Searles Hill Road, and the Phillipston State Wildlife Management Area extends from the cemetery southward. To the west is the Popple Camp State Wildlife Management Area. To the east lies The Trustees of Reservations property, Elliott Laurel, and to the east of this, at the base of the east slope of Searles Hill, is Queen Lake, a ¼-mile-wide, 1½-mile-long water body dotted with summer cottages.

The cemetery's setting is rural. While it stands just fifteen feet from the eastern edge of Searles Hill Road, Searles Hill Cemetery is bounded on the north, east, and west sides by dense woodlands, mixed with deciduous and coniferous trees and thick understory. Searles Hill Road, while paved with roughly-surfaced asphalt, has a narrow profile. A cut-granite stone wall, measuring four feet in height, lines Searles Hill Road along the length of the cemetery's western edge (Photo #2). An allee of mature (24" – 30" caliper) sugar maple trees, spaced approximately 30 feet apart, stands between the wall and road edge. The walls stand approximately fifteen feet off the road edge, and the trees lie approximately three feet from the outside face of the wall. One residence with several outbuildings is located diagonally across the road, several hundred feet to the south and west. Searles Hill Road carries local traffic from Old Queen Lake Road northward up Searles Hill, and ultimately narrows and becomes unimproved in less than one mile, preventing vehicles from passing through to Phillipston Center.

(continued)

¹ Searles Hill Road is also referred to as Searle Hill Road, most notably on the Town of Phillipston Assessor's Map and the United States Geological Survey 7.5 Minute Quad Sheet. In the 19th century, the land surrounding the cemetery was owned by James Searles. Members of the Phillipston Historical Commission refer to the cemetery, road and adjacent hill as Searles Hill Cemetery, Searles Hill Road, and Searles Hill.

United States Department of the Interior
National Park Service

National Register of Historic Places Continuation Sheet

Section Number 7 Page 2

Searles Hill Cemetery
Phillipston, Worcester County, MA

Site & Layout

Boundaries & Entrances

The 3.3-acre cemetery is rectangular in shape, measuring approximately 330 feet long (north to south) and 135 feet wide, with a .13-acre jog in its southeast corner. Stone walls rim all sides of the cemetery (Photos # 2 and 3), with the more substantial cut-granite retaining wall supporting the long west side along Searles Hill Road. This wall stands approximately four feet in height, and is dry-laid in an ashlar pattern. Large, flat slabs of granite have been placed in the top of the wall, creating the look of a capstone. Lichens have attached to much of the wall's outside face, giving it a splotchy, verdigris appearance. A dry-laid fieldstone wall edges portions of the south, east, and north sides. In some places this wall has tumbled, leaving gaps in the edge, and in spots on the east edge, the wall incorporates large granite boulders. A mix of mature deciduous and coniferous trees fills the cemetery's north, east, and south edges, enclosing the cemetery, and making it feel intimate and private.

Visitors to Searles Hill Cemetery may enter through a gate located slightly nearer to the southern end along Searles Hill Road (Photo #1). A pair of twelve-inch-square granite posts mark a five-foot-wide break in the stone wall. The posts stand approximately 5½ to 6 feet high and feature rounded tops. A three-foot-high, wrought-iron, single-leaf gate—hand hammered and designed in a picket style—secures the entryway, and a flush granite stone lies under the gate, creating a threshold. A set of holes in each of the posts suggests that the gate may have held another type of leaf (or leaves) at an earlier time, but has since been replaced by the current gate structure.

Topography & Landscape Features

The cemetery stands on a rise approximately five feet above the road. The entryway has been graded so that visitors (by foot or carriage) can proceed gradually from the roadway, through the gate, and up into the cemetery. Inside the cemetery, the landform rolls gently from a high point near the southern end to a low point at the northern end (Photo #4). The slopes also fall gently eastward, with much of the eastern edge lying along a depressed area. Several outcroppings of ledge protrude from the ground near the southern, or higher, section of the cemetery.

The cemetery contains a few gravesite plantings and several mature specimen trees, but is otherwise completely open. Just inside the gate, to the south are two middle-aged oaks, and to the north, four spruces planted closely together. Along the northern edge, just inside the fieldstone wall, stand several mature oak trees. Along the eastern edge, the limbs of shade trees from outside the wall extend into the cemetery, and underneath the limbs grow blueberries and ferns. Perennial groundcovers mix with turf to cover the cemetery floor.

(continued)

United States Department of the Interior
National Park Service

National Register of Historic Places Continuation Sheet

Section Number 7 Page 3

Searles Hill Cemetery
Phillipston, Worcester County, MA

Searles Hill contains one family plot, surrounding six graves of the Stratton family (Photo #5). Located at the far northern end, the plot is enclosed with a chunky (twelve-inch-square) granite post and steel-rail fence. The posts appear at each corner, as well as at the mid-point of each side, and the rail is painted black and secured to the posts with rosette-style couplings. Other markers are grouped largely by family, but appear in rows without any type of enclosure.

Monuments & Markers

Searles Hill Cemetery contains a total of 98 grave markers, constructed largely of slate and marble. Footstones appear with many of the headstones, and all of the stones contain inscriptions and carvings on their west sides, with interments extending eastward. The earliest stones are simple in form, tympanum-style tablets made of slate, and many display intricate carvings. The first known burial, that of Susanna White (d. 1777), is marked with a slate tablet bearing the "memento mori" motif, with a child's face centered in the tympanum, carved in bas relief and projecting deep shadows. The gravestones of Simeon Hayward (d. 1798), Susannah White (d. 1790; Photo #7), and Josiah Bouker (d. 1781) display winged heads. Other slate markers, such as that of Sarah Hager (d. 1803; Photo #8) contain the willow and urn motif, surrounded by architectural imagery. Another slate marker stands approximately four-foot-high and displays the willow and urn motif within a scroll-shaped tympanum. The majority of the gravestones are constructed of slate. Some of the slate carvings appear to be the work of John or Thomas Park of Groton, Massachusetts.

All of the remaining stones are made of marble, with the exception of one granite boulder carved with the initials "HBS." The marble tablets are shaped with rounded, rectangular, or gently pointed tops, and display bold lettering, some of which is in bas relief. The marble stone of Frederick and Amelia Bancroft, husband (d. 1909) and wife (d. 1917), features two arches joined to appear as one.

Current Condition

The Town of Phillipston Cemetery Commission members care for the Searles Hill Cemetery. This three-member board volunteers its time to mow lawns, trim around gravestones, and perform fall and spring clean-ups. They have taken their task seriously, and the cemetery's overall condition is very good. Many of the markers contain biological growth, several are leaning, and a few have broken, but the stones have not suffered from the devastation often caused by vandalism, freezing and thawing, improper mowing techniques, or simple neglect. Some of the marble markers appear to have broken and subsequently repaired using substandard methods.

Restoration Plans

The Town of Phillipston, represented by its historical commission, is concerned about the long-term health of the Searles Hill Cemetery, one of the town's first places of interment. While the Cemetery Commissioners continue to maintain the cemetery landscape, the town lacks funds for preservation

(continued)

United States Department of the Interior
National Park Service

National Register of Historic Places Continuation Sheet

Section Number 7 Page 4

Searles Hill Cemetery
Phillipston, Worcester County, MA

treatment, including gravestone conservation. In addition, the historical and cemetery commissions are concerned about future development of private property bordering the cemetery to the north, and across Searles Hill Road to the west. By nominating the Searles Hill Cemetery to the National Register of Historic Places, the town aims to bring greater public awareness about the cemetery's importance as an historic resource, and in so doing, secure ongoing public funding for conservation and care.

Archaeological Description

While no ancient Native American sites are currently recorded in the cemetery, it is possible that sites are present. One ancient site is recorded in the general area (within one mile). Site densities are low in many upland areas of Central Massachusetts, probably the result of underreporting from limited collector activity and the lack of development. Actual site densities in the region are also low when compared to coastal locales and lakeside/riverine locations. Environmental characteristics of the cemetery represent locational criteria (slope, soil drainage, distance to wetlands) that are favorable for many types of Native sites. The cemetery occupies well-drained, level to moderately sloping topography, in close proximity to wetlands. A swampland, part of the headwaters for the Moccasin Brook drainage, lies within 1,000 feet of the cemetery to the east and southeast. The Searles Hill Cemetery occupies a terraced location at the base of the southern slope of Searles Hill, in the Chicopee/Connecticut River drainage. Given the above information, the size of the cemetery (3.3 acres), the presence of at least 98 grave markers, the general lack of recent historic development, and known patterns of Native American settlement in the Central Massachusetts uplands, a moderate potential exists for locating ancient Native American resources in the Searles Hill Cemetery.

A high potential exists for locating historic archaeological resources at the Searles Hill Cemetery. Additional historical research, combined with archaeological survey and testing, may locate unmarked graves anywhere in the cemetery or the surrounding locale. Unmarked graves could result from intentionally unmarked graves of paupers, unknown persons, or indigents who were intentionally buried in unmarked graves around the periphery of the cemetery, or in an area set off for these individuals. Unmarked graves may also result from lost gravestones or grave markers made with biodegradable materials. At least 98 headstones and footstones arranged in rows have been identified in the cemetery. Both unmarked and marked graves may include a burial shaft, skeletal remains, and personal items of the deceased. Memorial graves, used as a memorial for persons who died elsewhere or for whom a body is absent, may contain grave markers only. Multiple interments may also be present.

Funerary artifacts associated with memorial services for individuals and groups may also exist within the cemetery. Artifacts and stratigraphic evidence associated with landscape features and maintenance activities at the cemetery may also exist.

(end)

Searles Hill Cemetery
Name of Property

Worcester County, Massachusetts
County and State

8. Statement of Significance

Applicable National Register Criteria

(Mark "x" in one or more boxes for the criteria qualifying the property for National Register listing.)

- A** Property is associated with events that have made a significant contribution to the broad patterns of our history.
- B** Property is associated with the lives of persons significant in our past.
- C** Property embodies the distinctive characteristics of a type, period, or method of construction or represents the work of a master, or possesses high artistic values, or represents a significant and distinguishable entity whose components lack individual distinction.
- D** Property has yielded, or is likely to yield, information important in prehistory or history.

Criteria Considerations

(Mark "x" in all the boxes that apply.)

Property is:

- A** owned by religious institution or used for religious purposes.
- B** removed from its original location.
- C** a birthplace or grave.
- D** a cemetery.
- E** a reconstructed building, object, or structure.
- F** a commemorative property.
- G** less than 50 years of age or achieved significance within the past 50 years.

Narrative Statement of Significance

(Explain the significance of the property on one or more continuation sheets.)

Areas of Significance

(Enter categories from instructions)

- Art
- Exploration/Settlement
- Landscape Architecture
- Social History
- _____
- _____

Period of Significance

1777-1915

Significant Dates

1777

1877 – cemetery expansion

Significant Person

(Complete if Criterion B is marked above)

N/A

Cultural Affiliation

N/A

Architect/Builder

N/A

9. Major Bibliographical References

(Cite the books, articles, and other sources used in preparing this form on one or more continuation sheets.)

Previous documentation on file (NPS):

- preliminary determination of individual listing (36 CFR 67) has been requested
- previously listed in the National Register
- previously determined eligible by the National Register
- designated a National Historic Landmark
- recorded by Historic American Buildings Survey # _____
- recorded by Historic American Engineering Record # _____

Primary location of additional data:

- State Historic Preservation Office
- Other State agency
- Federal agency
- Local government
- University
- Other

Name of repository:

United States Department of the Interior
National Park Service

National Register of Historic Places Continuation Sheet

Section Number 8 Page 1

Searles Hill Cemetery
Phillipston, Worcester County, MA

NARRATIVE STATEMENT OF SIGNIFICANCE

The Searles Hill Cemetery, Searles Hill Road, Phillipston, Worcester County, MA, possesses integrity of location, design, setting, materials, workmanship, feeling and association and meets National Register Criteria A and C at the local level. Associated with the broad patterns of Phillipston's 18th and 19th-century history, displaying many examples of 18th- and 19th-century regional gravestone carvers, and reflecting the layout of a late 18th-century burying ground, the Searles Hill Cemetery also qualifies under Criterion Consideration D.

Under Criterion A, the Searles Hill Cemetery occupies an important place in the history of the town as one of its first burial places. Established ca. 1777, on land donated by one of the original settlers, it predates the incorporation of the town by ten years. It contains the graves of several Phillipston war veterans, farmers, and individuals who helped establish the town, as well as the relatives of Thomas H. White, a Phillipston native, who founded the White Sewing Machine Company in 1858.

Under Criterion C, Searles Hill is a significant historical and artistic resource that represents the distinctive characteristics of Massachusetts' 18th-century burial grounds. Searles Hill Cemetery covers 3.3 acres in a simple, rectangular shape, encircled by fieldstone and cut-granite walls. Its slate and marble tympanum-style tablets are laid out in neat rows, and many of the stones display the work of regional gravestone carvers. Imagery includes winged death's heads, willows and urns, and architectural detailing.

Colonial Period (1675-1775)

The land that became Phillipston was known as part of Narragansett No. 6, a tract of land located in the interior of Massachusetts and covered by forest. Crane's History of Worcester County Massachusetts (1924) noted that before the early to mid-1700s, the area was "almost wholly unoccupied by human beings," and that Native tribespeople "may have passed through this region on their hunting excursions." Crane states further that because the Native people "had not occupied the land, there was no title to extinguish." The Massachusetts General Court was eager to settle new townships, and in 1728 and 1732 granted 120 sections of the land to soldiers in reward for their service in King Philip's War. Narragansett No. 6 included land in what would become part of Phillipston and all of Templeton. Families did not begin arriving in Narragansett No. 6 until after 1750.

The first settlers to the area included Charles Baker (arrived in 1751), and the three sons of Thomas White (arrived in 1768). Baker, a surveyor and innkeeper, owned land in the southern part of Narragansett No. 6, and in 1759 donated a portion of it for a burying ground. He arranged for it to be surveyed, and between 1759 and 1777, it became known as the South Yard. Joshua White, of Cambridge, divided his land equally among his three sons, Joseph (d. 1795), Thomas (d. 1827), and Benjamin. The brothers came to the area together, camped in the woodlands, and cleared their land. Thomas's wife,

(continued)

United States Department of the Interior
National Park Service

National Register of Historic Places Continuation Sheet

Section Number 8 Page 2

Searles Hill Cemetery
Phillipston, Worcester County, MA

Prudence Hayward White (d. 1820), gave birth to twins in the wilderness during June of 1768. Joseph White, Thomas White, Prudence White, and many of their descendents are interred at Searles Hill Cemetery including. Susanna White (1771-1777), who was the first person known to be buried at Searles Hill. The cemetery also contains the grave of Susannah White (1778-1796), also the daughter of Thomas and Prudence White, who was born the year after her sister, Susanna, died.

The early families living in the Western Precinct attended church and town meetings at the meetinghouse in Templeton Center, located in the eastern part of the township. By the 1770s, the Western Precinct families were finding it increasingly difficult to travel to Templeton Center, and as a result organized to build a separate church and meetinghouse. In May of 1773, 41 inhabitants of Templeton and thirteen residents of Athol petitioned the Massachusetts General Court for authority to establish a separate church in the western part of Templeton and easterly part of Athol. The petition was made again in 1774, and Templeton West Precinct became a separate parish on February 15. The first town meeting was held on March 22, 1774.

Federal Period (1775-1830)

Eighteen men from Phillipston fought in the Revolutionary War, some in the most famous battles. Some residents helped rout Burgoyne at Bennington, Stillwater, and Bemis Heights, and others were present at his surrender at Saratoga. In the decades following the war, the cemetery became the resting place of at least four soldiers: Jonathan Stratton (d. 1819; Photo #5), Captain John Hager (d. 1842), Silas Baker (d. 1825), and Jonathan Bowker (d. 1838).

In 1786, the West Precinct was incorporated as the Town of Gerry, named for Elbridge Gerry (1744-1814), who had offered to pay for the windows in the first meetinghouse. Elbridge Gerry was elected a member of the General Court of Massachusetts Bay in 1773, and in 1776 was chosen for the Continental Congress. He was a signer of the Declaration of Independence and Articles of Confederation. In 1810, he became governor of Massachusetts, and later, under James Madison, served as the fifth Vice President of the United States. The 1790 US Census recorded 740 residents of Gerry. The residents of Gerry were opposed to the War of 1812, and at town meeting they passed resolutions denouncing the administration and protesting against the war effort.

In 1814, the people of Gerry chose to rename the town because they opposed Gerry's political views (Gerry opposed the National Constitution and the politics of Washington). The new name stemmed from that of Massachusetts Lieutenant Governor William Phillips, a lifelong public servant. Phillips made contributions to both Phillips Academy in Andover and the Andover Theological Seminary, and was a strong supporter of the improvement of the physical, intellectual, moral, and spiritual condition of the men of Phillipston (as noted at his funeral). The name change was made official on February 5, 1814. The population of Phillipston during the Federal Period grew from 740 in 1790 to 916 in 1820.

(continued)

United States Department of the Interior
National Park Service**National Register of Historic Places
Continuation Sheet**Section Number 8 Page 3**Searles Hill Cemetery
Phillipston, Worcester County, MA**

At the same time, farming dominated the local economy, with the town supporting more than 100 farms. Farmers raised chickens, cows, and pigs; produced beef, pork, butter, milk, and eggs; and cultivated oats, rye, vegetables, and fruits. The town had grist and saw mills, and local shoemakers and blacksmiths. In 1811, Ignatius Goulding of Leicester and Samuel Damon of Holden built a cotton mill at the northeast end of Phillipston Pond (today known as Queen Lake). Near the mill, Goulding and Damon developed "Goulding Village," a cluster of small homes that housed the mill workers. Transport of goods during the Federal Period was via horse teams, largely along the turnpike (MA Route 2A) that passed through a portion of Phillipston.

In addition to the Revolutionary War soldiers discussed above, Searles Hill Cemetery contains the graves of many individuals associated with the early development of the town, and descendants and/or relatives of these individuals. Many lived in the vicinity of the cemetery. George Bowker (d. 1816), a wheelwright who lived on Templeton Road, is buried at Searles Hill, along with relatives Abigail Bowker (d. 1843) and Jonathan Bowker (d. 1838). Pollina Nickerson (d. 1802) and Smith Nickerson (d. 1802) were related to Nathan Nickerson, a sawmill owner. Huldah Knowlton (d. 1796) was related to Joseph Knowlton, a blacksmith and deacon who lived on Templeton Road. Lydia Maynard (d. 1863) and Abraham Maynard (d. 1854) were relatives of potash maker Berzeliel Maynard. In 1796, Thomas White (d. 1827; Photo #6) and Jonathan Stratton (d. 1819; Photo #5) (both later interred at Searles Hill), served on a committee to establish the Templeton and Phillipston Thief Detecting Society, an entity charged with apprehending thieves and returning stolen goods back to original owners. The society operated into the mid 19th-century.

Industrial & Early Modern Periods (1830-1930)

The industries that were established in Phillipston in the early part of the 19th century continued to expand up until about 1840. In 1837, the town was operating at least one cotton mill, and around the same time supported a woolen mill and palm-leaf hat factory. By 1837, the mill operations at Goulding Village were producing 165,000 yards of cotton cloth, and 11,500 yards of wool a year. At another Goulding Village mill that year, women residents braided 65,000 palm-leaf hats.

In the mid 19th century, the area in the vicinity of the South Yard was referred to as Searles Hill, named after James Searles (1786-1873), who owned property along the high ridge connecting the south part of Phillipston to the town center. Searles is noted as owner of this land on both the 1857 (Walling and Baker) and 1870 (F. W. Beers) maps of Phillipston, and he is interred, along with his son Amos (1836-1862), at Center Cemetery. It is likely that residents began referring to the South Yard as Searles Hill Cemetery during this period.

One prominent industrialist, Thomas H. White (1836-1914), is associated with the Searles Hill Cemetery. The grandson of settler Thomas White (d. 1827) and the son of Windsor White (chairmaker), Thomas H. White set out in 1858 with \$350 to produce and sell a small, hand-operated, single-thread

(continued)

United States Department of the Interior
National Park ServiceNational Register of Historic Places
Continuation SheetSection Number 8 Page 4Searles Hill Cemetery
Phillipston, Worcester County, MA

sewing machine. He established his factory in Phillipston and ran the business there for eight years. Here he produced the New England Sewing Machine, a \$10 item that measured six inches in height and nine inches in length. By 1866, the enterprise had grown, and White relocated first to Orange, Massachusetts and then to Cleveland, Ohio to be closer to his suppliers. In 1876, White incorporated his business as the White Sewing Machine Company, and began the mass manufacturing of machines that quickly became one of the most widely recognized products in the industry. White's company still produces sewing machines to this day, under the name White Consolidated Industries. While White is interred elsewhere, many of his relatives are buried at Searles Hill (Photo #6), including Abel White (d. 1844), Harriet White (d. 1838), Howard White (d. 1803), Howard White (d. 1833), Ellen White (d. 1833), Thomas White (d. 1827), Prudence White (d. 1820), Susanna White (d. 1777), and Susannah White (d. 1796; Photo #7).

Railroads began extending to the towns around Phillipston beginning in the 1840s, including the Vermont & Massachusetts Railroad (1847) and the Ware River Railroad (1873), both routing through Templeton. Both lines bypassed Phillipston, and as a result, manufacturing began to decline; by the end of the 19th century, they had largely ceased to exist. Agriculture continued as the town's economic staple, and included dairy farming, market gardening, poultry raising, and fruit growing, and thrived into the early 20th century. In the 1920s, one fruit farm in the northern part of Phillipston contained 850 apple trees, 300 peach trees, 50 pear trees, and 40 cherry trees. One such farmer was Silas Baker (d. 1860), who is interred at Searles Hill.

In the late 1800s, a modest summer tourist business evolved. In 1891, a cottage was built on Queen Lake, a sliver of water 1¼ miles long and half a mile wide, located near the south part of town just to the east of Searles Hill Cemetery. Formerly known as Phillipston Pond, Queen Lake received its current name from George Simonds of Barre, a fisherman, who wrote poems during a stay at a lakeside cottage. In one of his poems, he began "*O Queen of the Lakes among the hills: 'Bove Goulding Village's ruined mills.*" Despite the presence of industry, farming, and summer tourism, the town population began to decline from its peak of 932 in 1830 to 764 in 1860, and fell to 354 in 1920.

In 1877, Frederick Bancroft sold a narrow strip of land opposite the cemetery to Antrim White of Medford, Massachusetts. A soldier in the Civil War, Bancroft owned the land to the west of the cemetery across Searle Hill Road as early as 1857. White then gave the land to the town of Phillipston so that crews could widen Searles Hill Road. White commissioned a wall to be built along the face of the cemetery (Photo #2), with a matching wall across the road, and rows of sugar maple trees planted outside each wall. He also endowed the cemetery with \$200 in a perpetual care fund to maintain the graves of his first wife, Lucy (1813-1843), and her family. His bequest was documented in the 1879 Phillipston town report as follows:

(continued)

United States Department of the Interior
National Park Service

National Register of Historic Places Continuation Sheet

Section Number 8 Page 5

Searles Hill Cemetery
Phillipston, Worcester County, MA

...first, in the proper care and repair of the lots in the South Burying Ground in said town, containing the remains of my father and mother, of my first wife, Lucy A. White, and her family and any sum remaining unexpended each year for the above purpose is to be applied in the proper care and repair of the wall of the west side of the road of said burying ground, in care of trees [outside] said wall and of said burying ground generally. I also devise and bequeath to the Town of Phillipston the land purchased by me of Frederick E. Bancroft to have and hold, including the improvements thereon, and to be made forever for the benefit of the highway and said cemetery.

Many of the interments at Searles Hill Cemetery took place during the Industrial and Early Modern periods, including the burials of several individuals of historical importance to the town. Abel White (d. 1844; Photo #6), a relative of Thomas White, served as a Representative in the Massachusetts State House from 1831 to 1833, and as a town selectman between 1818 and 1823, and again in 1830, 1832, and 1833. Silas Baker (d. 1867), a farmer, served as a town selectman from 1856 to 1857. Frederick E. Bancroft (d. 1909; adjacent landowner), his wife, C. Amelia (d. 1917), and infant daughter Jenette (d. 1860), are also interred at Searles Hill Cemetery.

1930 to the Present

After 1930, the population of Phillipston slowly began to grow. With the coming of the automobile and the paving of roads, residents were able to commute to jobs outside of town, although, farming continued as the main economic activity until the early 1950s. At that time, the Commonwealth of Massachusetts began to make improvements to Routes 2 and 2A, and work opportunities for those willing to drive expanded. In the last half of the 20th century, Phillipston became a bedroom community for people working in Athol, Orange, Gardner, and Leominster, and as far away as Amherst and Worcester. More than half of the houses in Phillipston were built after 1970. Despite this change, agricultural operations continued, including several apple orchards and Christmas tree farms. By 2000, the population had more than quadrupled from its 1930 level of 357 to 1,626.

While the last burial at Searles Hill Cemetery took place in 1915, the town of Phillipston continued to care for the landscape, adopting a regular mowing and trimming schedule, and performing spring and fall clean-ups. As a result, the cemetery landscape is in very good condition, with only minor damage—mostly from old age—to the gravestones.

Gravestone Carvers

As noted in the Description section of this nomination, many of the stones at Searles Hill Cemetery were likely carved by known stone carvers working regionally in the late 18th and early 19th centuries. The stone of Susannah White (d. 1777) appears to be the work of either John Park (1731-

(continued)

United States Department of the Interior
National Park Service

National Register of Historic Places Continuation Sheet

Section Number 8 Page 6

Searles Hill Cemetery
Phillipston, Worcester County, MA

1793) or his brother Thomas Park (1745-1806). John and Thomas Park were the sons of William Park of Scotland, and came to New England in the 1760s. The brothers worked from a shop in Groton, Massachusetts, and produced images of vases, urns, and stubby architectural pillars. Thomas was known for his lifelike faces with wings, usually with "memento mori" filling the bottom half of a divided tympanum.

Several stones bear the signatures of lesser-known mid-19th century carvers working in Central Massachusetts, including B. Swan of Barre; W. T. Davis of Athol; J. Park of Fitchburg; and CM and BH Kinney also of Barre. The stones of Captain Silas Baker (d. 1867) and Lydia Smith Maynard (d. 1863) were carved and signed by B. Swan of Barre. The stone of Abraham Maynard (d. 1854) was signed by "Walker." The stone of Abigail Baker (d. 1850) was carved and signed by W. T. Davis of Athol. The marble stones of Sally Knight (d. 1840), Thaddeus Knight (d. 1840), and Martha Knight (d. 1841) were carved and signed by C. M. and B. H. Kinney of Barre. The stone of Abigail Bowker (d. 1843) was carved and signed by J. Park of Fitchburg.

Archaeological Significance

Since patterns of ancient Native American occupation in Phillipston are poorly understood, any surviving sites could be significant. Ancient sites in this area can be important by providing information on upland/interior sites in general, and the role sites along tributary streams of the Connecticut River played in local/regional Native American subsistence and settlement systems. Ancient sites in this area could be part of a large, possibly seasonal, settlement network based along the Connecticut River, or part of a specialized adaptation to local environments in the uplands. Many current theories indicate prehistoric socio/political/economic boundaries are based along riverine basins. Although sites in this area are ultimately part of the Connecticut River drainage, the district area is located between the headwaters of two major tributaries of that drainage, the Millers River to the north, and the Chicopee River to the south. Ancient Native American sites in this area may enable a test of theories relating to riverine adaptations, and the importance of sites and settlement/subsistence patterns that are geographically close, but in different secondary drainages within the same overall drainage system.

Historic archaeological resources described above may contribute important information associated with the evolution and internal configuration of a small rural cemetery that developed in the western Massachusetts uplands from the late 18th through the early 20th centuries. Additional historical research, combined with archaeological survey and testing, may contribute important evidence that indicates when the Searles Hill Cemetery was first used, and whether or not it is the first burial place in Phillipston. The Searles Hill Cemetery was established ca. 1777, and the first known burial was interred that year. The last burial at the Searles Hill Cemetery took place in 1915.

Historical and archaeological evidence may also contribute important evidence related to burial patterns used in the Searles Hill Cemetery, and how they may have changed through time. Evidence may also

(continued)

United States Department of the Interior
National Park Service

National Register of Historic Places Continuation Sheet

Section Number 8 Page 7

Searles Hill Cemetery
Phillipston, Worcester County, MA

survive that identifies areas of the cemetery used exclusively for the burial of paupers, unknown persons, and indigents or other socio/economic groupings. The latter evidence may contribute important information related to the way the local community and town treated their less fortunate residents in death.

Individual and groups of burials may contribute important evidence related to the social, cultural, and economic characteristics of residents in the Templeton West Precinct/Searles Hill locale and, by extrapolation, the residents of Phillipston. Detailed analysis of the material culture and skeletal contents of individual burials may contribute important evidence associated with religious beliefs and economic status of individuals, families, and the residents of the West Precinct/Phillipston area. Osteological study of skeletal remains may also contribute important physical descriptions of individuals and pathologies that affected the residents of this area. Important evidence may survive that documents how different occupations affected the physical well-being of sexes, individuals, families, or other socioeconomic groupings.

(end)

United States Department of the Interior
National Park Service

National Register of Historic Places Continuation Sheet

Section Number 9 Page 1

Searles Hill Cemetery
Phillipston, Worcester County, MA

BIBLIOGRAPHY

Books

- Blachowicz, James. From Slate to Marble, Gravestone Carving Traditions in Eastern Massachusetts 1770-1870. Evanston, IL: Graver Press, 2006.
- Chase, Theodore, and Laurel K. Gabel. Gravestone Chronicles: Some Eighteenth-Century New England Carvers and Their Work. Boston: New England Historic Genealogical Society, 1990.
- Crane, E. B. History of Worcester County, Massachusetts, Vol. II. New York: Lewis Historical Publishing Company, Inc., 1924.
- Gariepy, Carole J., and Maria Jane French. The Spirit of Phillipston. Phillipston, Mass.: The Historical Society of Phillipston, 2007.
- Historical Address at the Celebration of the 150th Anniversary of the Incorporation of the Town of Phillipston, Massachusetts. Athol, Mass.: Athol Publishing Company, 1936.
- Lord, Elizabeth Wellington. The Story of Templeton. Templeton, Mass.: Narragansett Historical Society, Inc., ca. 1886.
- Lord, William G. History of Athol, Mass. Somerville: Somerville Printing Company, 1953.
- Systematic History Fund. Vital Records of Phillipston, Massachusetts, to the end of the year 1849. Worcester, Massachusetts: Franklin P. Rice, 1906.

Maps

1795. Gerry, March 1795. Charles Baker and Gardner Maynard (Massachusetts State Archives No. 1258).
1796. The State of Massachusetts from the Best Information.
1857. Worcester County, Massachusetts, H. F. Walling and T. W. Baker. Boston: W. E. Baker & Co.
1870. Phillipston, Atlas of Worcester County, Massachusetts. New York: F. W. Beers & Co (Reprinted in 1971).
1898. Map of the Towns of Athol, Phillipston & Templeton, Worcester County, Massachusetts. Springfield, MA: L. J. Richards & Co.
1976. Map of Phillipston. Auburn, Maine: John E. O'Donnell & Associates.
1988. Athol, Massachusetts, 1:25,000-scale metric topographic map. United States Department of the Interior, United States Geological Survey, 1988.
2007. Property Map of Phillipston, Massachusetts, Map 16. Littleton, NH: Cartographic Associates, Inc., 1007.

Public Documents

- Gerry, Book of Records, 1786-1794.
- Massachusetts Historical Commission Form E, South Yard (aka Searles Hill Cemetery), completed in March 2006 by Maria Jane French, Phillipston Historical Commission.
- National Register of Historic Places Registration Form, Phillipston Center Historic District, completed by the Massachusetts Historical Commission, 1999.

(continued)

United States Department of the Interior
National Park Service

National Register of Historic Places Continuation Sheet

Section Number 9 Page 2

Searles Hill Cemetery
Phillipston, Worcester County, MA

Templeton West Precinct, Book of Records, 1774-1786.
Town of Phillipston, Open Space Committee, Open Space and Recreation Plan, 2007.

Miscellaneous Documents

Johnson, Ernest and Kent H. Dumas, "History of Phillipston." Unpublished essay, ND.
Martha Lyon Landscape Architecture, LLC (aka Paysage), Templeton Common Burial Ground,
Templeton, Massachusetts, Preservation Plan, November 2003.
Phillipston Historical Commission Files maintained by Maria Jane French.

(end)

Searles Hill Cemetery
Name of Property

Worcester County, Massachusetts
County, State

10. Geographical Data

Acreage of Property 3.3 Acres

UTM References See continuation sheet.

(Place additional UTM references on a continuation sheet)

1. Zone 18 Easting 735980 Northing 4712800

3. Zone Easting Northing

2. Zone Easting Northing

4. Zone Easting Northing

— See continuation sheet

Verbal Boundary Description

(Describe the boundaries of the property on a continuation sheet.)

Boundary Justification

(Explain why the boundaries were selected on a continuation sheet.)

11. Form Prepared By

name/title Martha H. Lyon, Paysage, with Betsy Friedberg

organization Massachusetts Historical Commission date August 2011

street & number 220 Morrissey Boulevard telephone 617-727-8470

city or town Boston state MA zip code 02125

Additional Documentation

Submit the following items with the completed form:

Continuation Sheets

Maps

A **USGS map** (7.5 or 15 minute series) indicating the property's location.

A **sketch map** for historic districts and properties having large acreage or numerous resources.

Photographs

Representative **black and white photographs** of the property.

Additional items (Check with the SHPO or FPO for any additional items)

Property Owner

(Complete this item at the request of the SHPO or FPO.)

Name Town of Phillipston, Massachusetts

street & number 50 The Common telephone 978-249-6828 (Town Clerk)

city or town Phillipston state MA zip code 01331

Paperwork Reduction Act Statement: This information is being collected for applications to the National Register of Historic Places to nominate properties for listing or determine eligibility for listing, to list properties, and to amend existing listings. Response to this request is required to obtain a benefit in accordance with the National Historic Preservation Act, as amended (16 U.S.C. 470 et seq.).

Estimated Burden Statement: Public reporting burden for this form is estimated to average 18.1 hours per response including the time for reviewing instructions, gathering and maintaining data, and completing and reviewing the form. Direct comments regarding this burden estimate or any aspect of this form to the Chief, Administrative Services Division, National Park Service, P.O. Box 37127, Washington, DC 20013-7127; and the Office of Management and Budget, Paperwork Reductions Project (1024-0018), Washington, DC 20503.

United States Department of the Interior
National Park Service

National Register of Historic Places Continuation Sheet

Section Number 10 Page 1

Searles Hill Cemetery
Phillipston, Worcester County, MA

Verbal Boundary Description

The nominated property is the parcel of land known as the Searles Hill Cemetery, and historically as the South Yard and South Cemetery. It is shown on the attached "Sketch Map," and is included on Town of Phillipston's Assessor's Map #16 (Parcel #4). The boundary is continuous and is delineated by a cut-granite block wall and dry-laid fieldstone wall.

Boundary Justification

The boundary of the nominated property includes the 3.3 acres historically associated with the Searles Hill Cemetery, established ca. 1777. Those resources associated with the Searles Hill Cemetery include an entry gate, perimeter wall, and many 18th, 19th, and early 20th-century grave markers.

(end)

PHOTOGRAPHS

Photographer: Martha Lyon, Paysage, April 2008

1. Entrance, looking north.
2. Cemetery wall, looking north.
3. Cemetery landscape from southwest corner, looking north.
4. Looking north, taken from cemetery center.
5. Stratton family plot, looking northeast.
6. White family tablets, looking northeast.
7. Susannah White marker (1790), looking east.
8. Sarah Hager slate marker (1803), looking east.

United States Department of the Interior
National Park Service

National Register of Historic Places Continuation Sheet

Section Number 10 Page 1

Searles Hill Cemetery
Phillipston, Worcester County, MA

Verbal Boundary Description

The nominated property is the parcel of land known as the Searles Hill Cemetery, and historically as the South Yard and South Cemetery. It is shown on the attached "Sketch Map," and is included on Town of Phillipston's Assessor's Map #16 (Parcel #4). The boundary is continuous and is delineated by a cut-granite block wall and dry-laid fieldstone wall.

Boundary Justification

The boundary of the nominated property includes the 3.3 acres historically associated with the Searles Hill Cemetery, established ca. 1777. Those resources associated with the Searles Hill Cemetery include an entry gate, perimeter wall, and many 18th, 19th, and early 20th-century grave markers.

(end)

United States Department of the Interior
National Park Service

**National Register of Historic Places
Continuation Sheet**

Maps & Photographs

Searles Hill Cemetery
Phillipston, Worcester County, MA

PHOTOGRAPHS

Photographer: Martha H. Lyon
Martha Lyon Landscape Architecture, LLC
(4/2008)

Location of Digital Files: Town of Phillipston
50 The Common
Phillipston, MA 01331

- 1 The entrance to Searles Hill Cemetery, taken from Searles Hill Road, looking northeast.
- 2 The westward-facing cemetery wall, taken from the entry to the cemetery, looking north.
- 3 A view across the cemetery landscape, taken from the southwest corner, looking north.
- 4 A view across the northern ¼ of the cemetery, taken from the center, looking north.
- 5 The Stratton family plot, taken from the southwest corner, looking northeast.
- 6 Marble and slate tablets of the White family, taken from the west side of the cemetery, looking northeast.
- 7 The slate marker of Susannah White (d. 1790), taken from the west side looking east.
- 8 The slate marker of Sarah Hager (d. 1803), taken from the west side looking east.

Massachusetts Historical Commission Digital Image Submission Form

Please submit one form for each group of digital images

About your digital files:

Camera Used (make, model): Canon EOS Digital Rebel XTi (10.5 megapixels)

Resolution of original image capture (camera setting including resolution and file format):

3888 x 2592 Pixels in .jpeg format

File name(s) (attach additional sheets if necessary) check here to refer to attached photo log:

Searles Hill Cemetery, Phillipston, Worcester County, MA
National Register of Historic Places

MA_Phillipston (Worcester County)_Searles Hill Cemetery 1
MA_Phillipston (Worcester County)_Searles Hill Cemetery 2
MA_Phillipston (Worcester County)_Searles Hill Cemetery 3
MA_Phillipston (Worcester County)_Searles Hill Cemetery 4
MA_Phillipston (Worcester County)_Searles Hill Cemetery 5
MA_Phillipston (Worcester County)_Searles Hill Cemetery 6
MA_Phillipston (Worcester County)_Searles Hill Cemetery 7
MA_Phillipston (Worcester County)_Searles Hill Cemetery 8

About your prints:

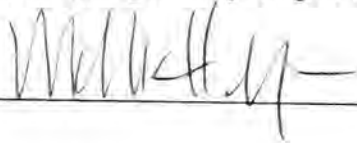
Printer make and model: Epson 4000

Paper: brand & type (i.e., Epson Premium Glossy Photo)

Epson Premium Glossy Photo Paper

Ink: Epson UltraChrome Pigmented Ink

Signature: (By signing below you agree that the information provided here is true and accurate.)

Signature: 

Date: 7.21.2008

United States Department of the Interior
National Park Service

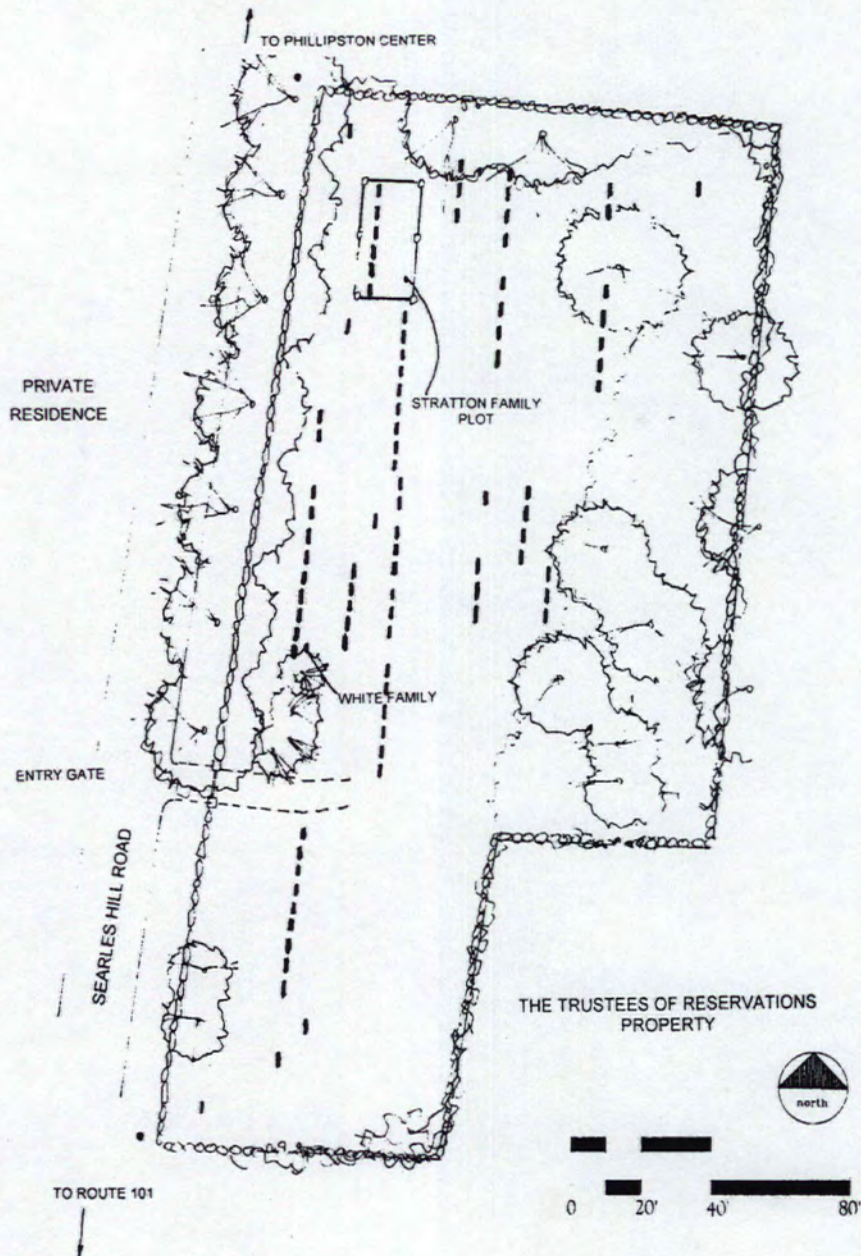
National Register of Historic Places Continuation Sheet

Maps & Photographs

Searles Hill Cemetery
Phillipston, Worcester County, MA

SKETCH MAP

Sources: Town of Phillipston Assessor's Map 16, Parcel 4
Field investigation by Martha Lyon Landscape Architecture, LLC



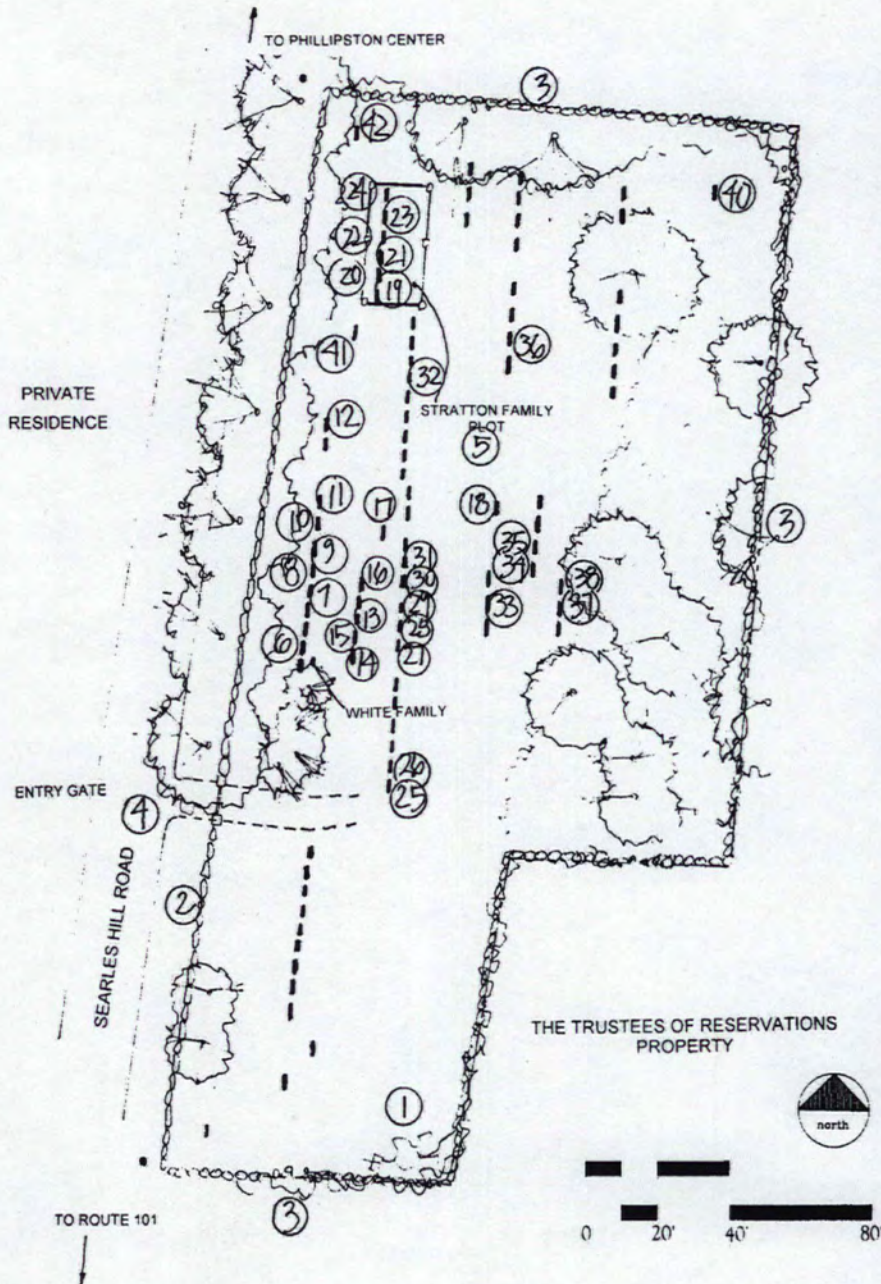
United States Department of the Interior
National Park Service

**National Register of Historic Places
Continuation Sheet**

Maps & Photographs

Searles Hill Cemetery
Phillipston, Worcester County, MA

DATA LOCATIONS



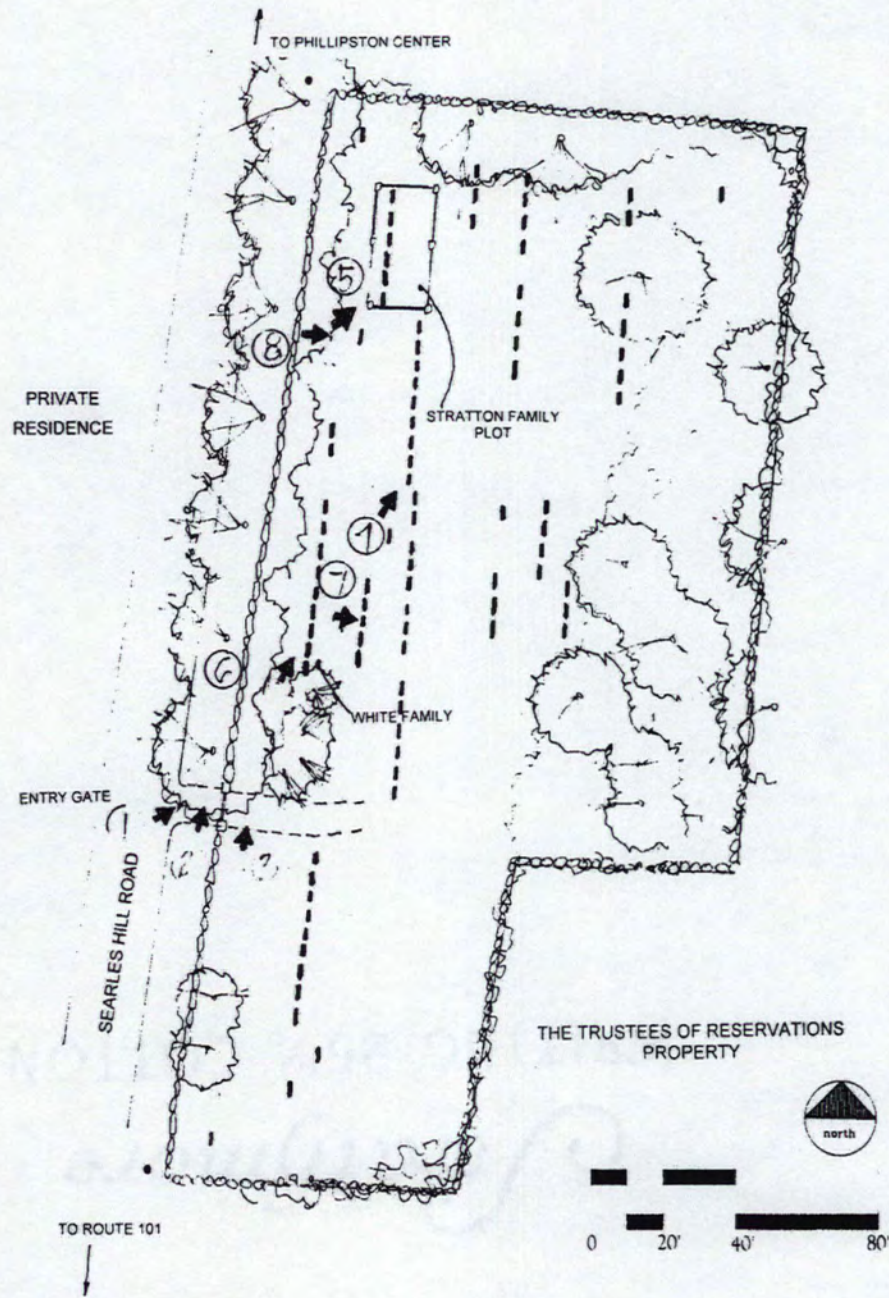
United States Department of the Interior
National Park Service

**National Register of Historic Places
Continuation Sheet**

Maps & Photographs

Searles Hill Cemetery
Phillipston, Worcester County, MA

PHOTOGRAPH LOCATIONS



SEARLES HILL CEMETERY
 Phillipston
 Worcester County, Massachusetts

DATA SHEET

Note: The following list represents a representative sample of grave markers at Searles Hill Cemetery. All resources contained in the data sheet can be found on the sketch map included as additional material in the nomination.

NUMBER	RESOURCE	YEAR	MATERIAL	FORM/STYLE	TYPE	STATUS
1	Searles Hill Cemetery	c. 1777	N/A	Cemetery	SI	C
LANDSCAPE ELEMENTS						
2	Border Wall	c. 1879	Cut Stone	Dry laid stone retaining wall	ST	C
3	Perimeter Stone Wall	c. 1777	Field Stone	Dry laid stone wall	ST	C
4	Entry Gate	c. 1879	Granite/Wrought Iron	Granite post/wrought iron gate	ST	C
5	Stratton Family Plot	c. 1816	Granite/Iron	Granite Post & Iron Pipe Railing Family Plot Enclosure	ST	C
GRAVESTONES, MONUMENTS & MARKERS						
6	Abel White	1844	Marble	Tablet	O	C
7	Harriet White	1838	Slate	Tablet/Willow & Urn Architectural Detailing	O	C
8	Howard White	1833	Slate	Tablet/Willow & Urn Architectural Detailing	O	C
9	Howard White	1803	Slate	Tablet/Willow & Urn	O	C
10	Simeon Hayward	1798	Slate	Tablet/Winged Head Architectural Detailing	O	C
11	Ellen White	1833	Slate	Tablet/Willow & Urn Architectural Detailing	O	C
12	Peter & Eunice Fletcher	1811	Slate	Tablet/Willow & Urn Box Tomb Motif	O	C
13	Susannah White	1796	Slate	Tablet/Winged Head Architectural Detailing	O	C

SEARLES HILL CEMETERY

Phillipston

Worcester County, Massachusetts

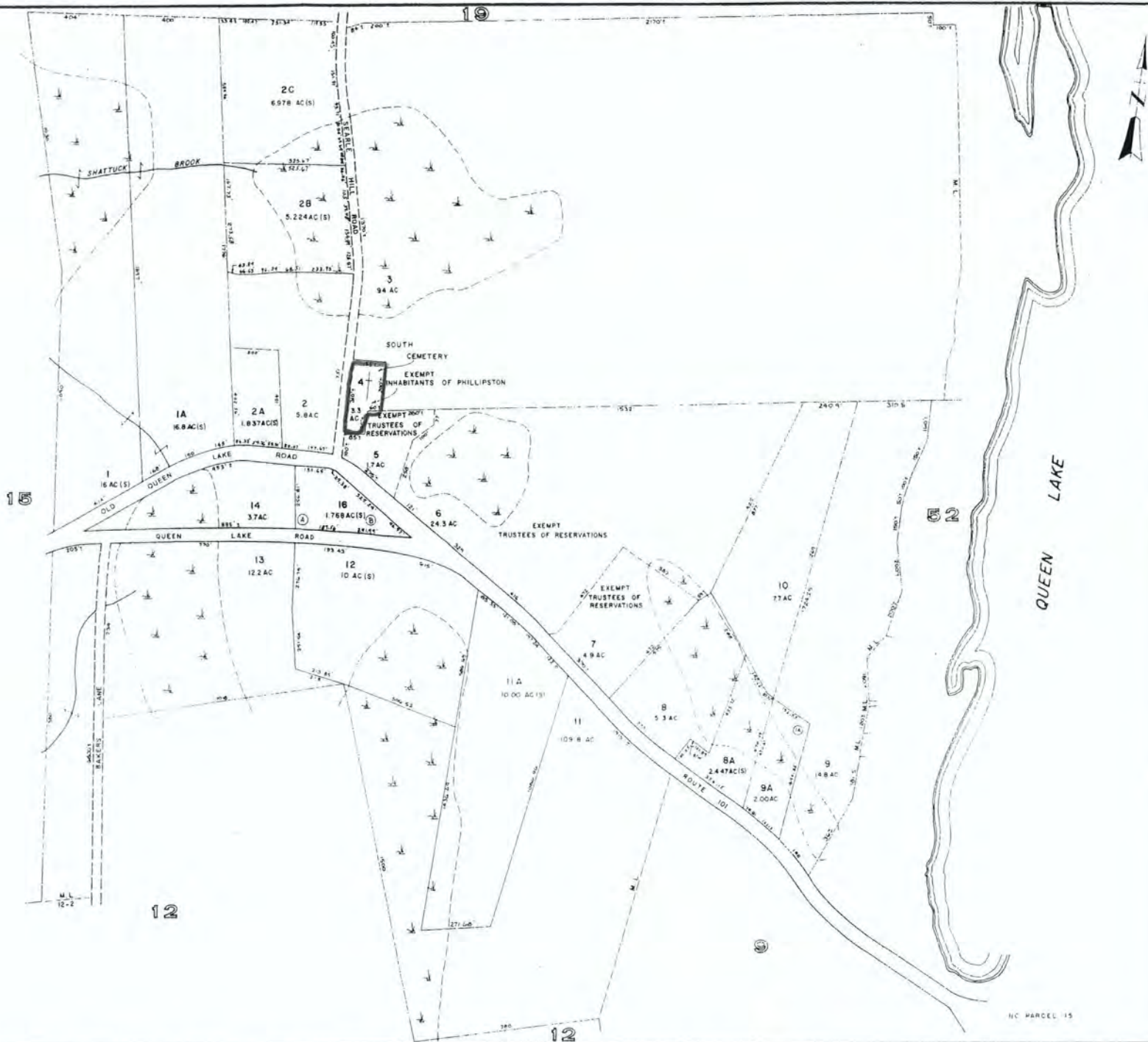
DATA SHEET

14	Prudence White	1820	Slate	Tablet/Willow & Urn Architectural Detailing	O	C
15	Thomas White	1827	Slate	Tablet/Willow & Urn Architectural Detailing	O	C
16	Susanna White	1777	Slate	Tablet/Memento Mori matching footstone/Thomas or John Park first known burial	O	C
17	Josiah Bouker	1781	Slate	Tablet/Memento Mori Winged Head/Scroll Motif	O	C
18	H. B. S.	ND	Granite	Small Boulder marked with Revolutionary War flag	O	C
19	Sarah Stratton	1846	Marble	Tablet with matching footstone part of Stratton family plot	O	C
20	Jonathon Stratton	1819	Slate	Tablet with matching footstone part of Stratton family plot	O	C
21	Shubael C. Stratton	1816	Marble	Tablet with matching footstone part of Stratton family plot	O	C
22	Susanna Stratton	1817	Slate	Tablet with matching footstone part of Stratton family plot	O	C
23	Betsy Stratton	1837	Marble	Tablet with matching footstone part of Stratton family plot	O	C
24	Jonathon Stratton	1844	Marble	Tablet with matching footstone part of Stratton family plot	O	C
25	Abigail Baker	1850	Marble	Tablet/ carved by W. T. Davis, Athol	O	C
26	Capt. Silas Baker	1867	Marble	Tablet/ carved by B. Swan, Barre		
27	Martha Knight	1841	Marble	Tablet carved by CM & BH Kinney, Barre	O	C
28	Thaddeus Knighht	1840	Marble	Tablet carved by CM & BH Kinney, Barre	O	C
29	Sally Knight	1840	Marble	Tablet carved by CM & BH Kinney, Barre	O	C
30	Abigail Bowker	1843	Marble	Tablet carved by J. Park, Fitchburg	O	C

SEARLES HILL CEMETERY
 Phillipston
 Worcester County, Massachusetts

DATA SHEET

31	Jonathan Bowker	1838	Marble	Tablet	O	C
32	Capt. John Hager	1842	Slate	Tablet/Willow & Urn Architectural Motif	O	C
33	Silas Baker	1825	Slate	Tablet/Willow & Urn	O	C
34	Lydia Smith Maynard	1863	Marble	Tablet carved by B. Swan	O	C
35	Abraham Maynard	1854	Marble	Tablet carved by Walker	O	C
36	C. Amelia Bancroft & Frederick E. Bancroft	c. 1909	Marble	Double Tablet	O	C
37	Lorinda Woodcock	1832	Slate	Tablet/Willow & Urn	O	C
38	Alford L. Woodcock	1829	Slate	Tablet/Willow & Urn	O	C
39	George Welch	1896	Marble	Tablet S.A.R.	O	C
40	Ruth Kellogg	1915	Marble	Tablet Last Burial	O	C
41	Sarah Hager	1803	Slate	Tablet/Urn & Willow Motif Architectural Motif		
42	Huldah Knowlton	1796	Slate	Tablet/Urn & Willow Motif Inscription Carved on Quilt Motif Marching Footstone	O	C
SUMMARY			CONTRIBUTING	NON-CONTRIBUTING		TOTAL
	Buildings		0	0		0
	Sites		1	0		1
	Structures		5	0		5
	Objects		36	0		36
TOTAL RESOURCE COUNT						42



Searles Hill Cemetery (South Cemetery)
Phillipston, MA

PREPARED BY PHOTOGRAMMETRIC METHODS BY
JOHN E. O'DONNELL & ASSOCIATES
AUBURN, MAINE
1976

LEGEND
ADJACENT SHEET NO.
COMMON OWNERSHIP
DEVELOPMENT LOT NO.
SCALED DIMENSION

12
OR
16
±

PROPERTY MAP
PHILLIPSTON
MASSACHUSETTS

REVISED AND REPRINTED BY
CARTOGRAPHIC ASSOCIATES, INC.
LITTLETON, NEW HAMPSHIRE

SCALE IN FEET
0 200 400

16

UNITED STATES DEPARTMENT OF THE INTERIOR
NATIONAL PARK SERVICE

NATIONAL REGISTER OF HISTORIC PLACES
EVALUATION/RETURN SHEET

REQUESTED ACTION: NOMINATION

PROPERTY Searles Hill Cemetery
NAME:

MULTIPLE
NAME:

STATE & COUNTY: MASSACHUSETTS, Worcester

DATE RECEIVED: 8/05/11 DATE OF PENDING LIST: 8/31/11
DATE OF 16TH DAY: 9/15/11 DATE OF 45TH DAY: 9/20/11
DATE OF WEEKLY LIST:

REFERENCE NUMBER: 11000665

REASONS FOR REVIEW:

APPEAL: N DATA PROBLEM: N LANDSCAPE: N LESS THAN 50 YEARS: N
OTHER: N PDIL: N PERIOD: N PROGRAM UNAPPROVED: N
REQUEST: N SAMPLE: N SLR DRAFT: N NATIONAL: N

COMMENT WAIVER: N

ACCEPT RETURN REJECT 9.15.11 DATE

ABSTRACT/SUMMARY COMMENTS:

**Entered in
The National Register
of
Historic Places**

RECOM./CRITERIA _____

REVIEWER _____ DISCIPLINE _____

TELEPHONE _____ DATE _____

DOCUMENTATION see attached comments Y/N see attached SLR Y/N

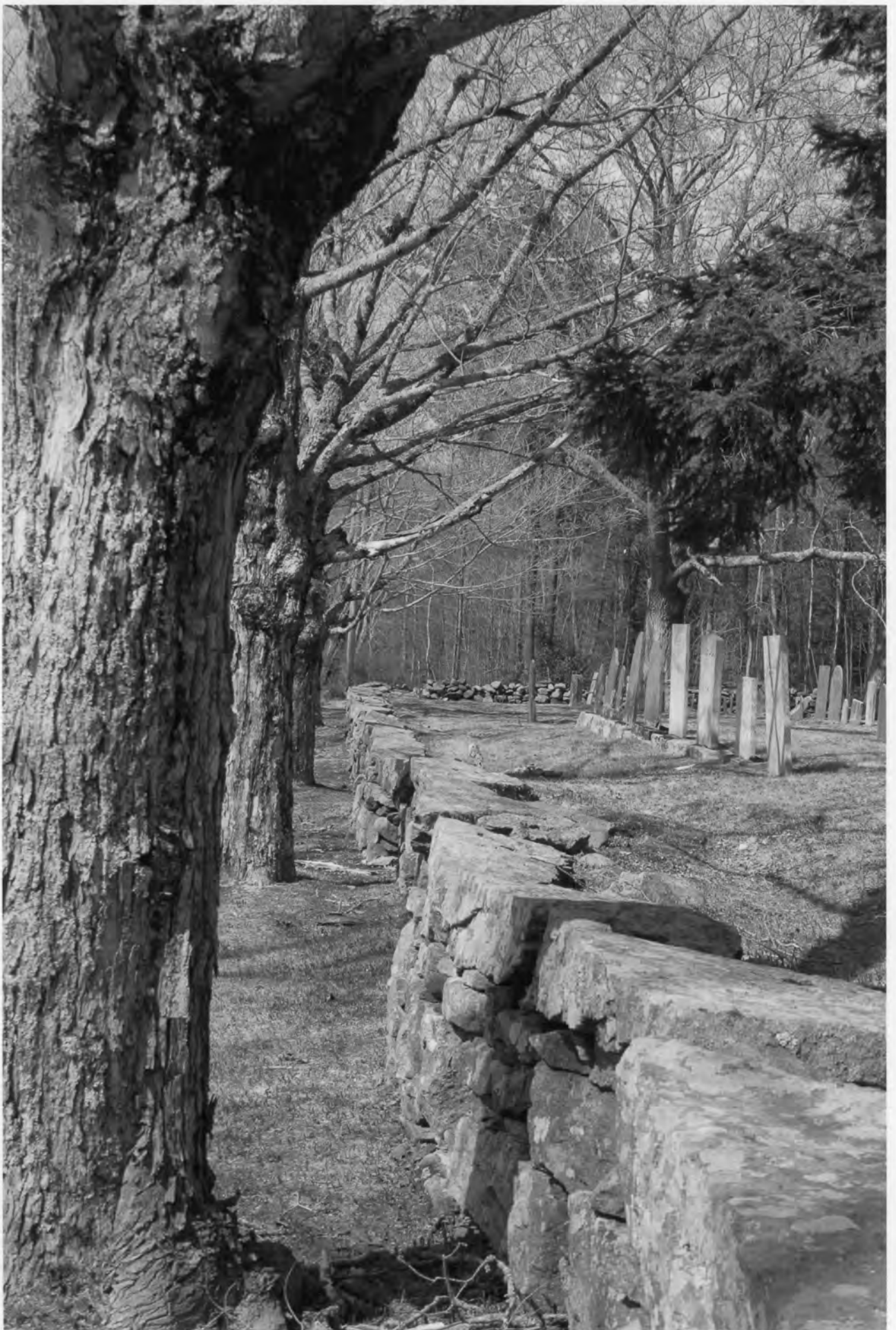
If a nomination is returned to the nominating authority, the nomination is no longer under consideration by the NPS.



#1
SEAPLES HILL CEMETERY
PHILLIPSTON, WORCESTER COUNTY, MA
MARTHA H. WOVN. APRIL 2008
THE ENTRANCE TO SEAPLES HILL CEMETERY, TAKEN
FROM SEAPLES HILL FORD, LOOKING NORTHEAST.

PHOTO 1

MA - PHILLIPSTON (WORCESTER COUNTY) - SEAPLES HILL CEMETERY 01. tif
ENTRANCE, LOOKING NORTH



#2

SEARLES HILL CEMETERY
PHILLIPSTON, WORCESTER COUNTY, MA

MARTHA H. LYON. APRIL 2008

THE WESTWARD FACING CEMETERY WALL TAKEN FROM
THE ENTRY TO THE CEMETERY, LOOKING NORTH

PHOTO 2

MA - PHILLIPSTON (WORCESTER COUNTY) - SEARLES HILL CEMETERY 02. kf

CEMETERY WALL, LOOKING N



#3

SEARLES HILL CEMETERY
PHILLIPSTON, WORCESTER COUNTY, MA

MARSHA H. MON. APRIL 2008

A VIEW ACROSS THE CEMETERY LANDSCAPE, TAKEN FROM
THE SOUTHWEST CORNER LOOKING NORTH.

PHOTO 3

MA - PHILLIPSTON (WORCESTER COUNTY) - SEARLES HILL CEMETERY 03. tif

LOOKING N, CEMETERY LANDSCAPE, FROM SW CORNER



#4

SEARLES HILL CEMETERY
PHILLIPSTON, WORCESTER COUNTY, MA
MARTHA H. MOON - APRIL 2003

A VIEW ACROSS THE NORTHERN 1/4 OF THE CEMETERY,
TAKEN FROM THE CENTER, LOOKING NORTH

PHOTO 4

MA - PHILLIPSTON (WORCESTER COUNTY) - SEARLES HILL CEMETERY 04.tif

LOOKING N TAKEN FROM CEMETERY CENTER



#15

GEARIES HILL CEMETERY
PHILIPSON, WORCESTER COUNTY, MA

MARIE H. WOOD. APRIL 2008

THE STRATTON FAMILY PLOT, TAKEN FROM SOUTHWEST
CORNER, LOOKING NORTHEAST

PLATE 5

STRATTON FAMILY PLOT, LOOKING NE



BUTSEY
DIED
Sept. 22, 1838.
E. 26.
FRANCIS H.
DIED
Feb. 10, 1842.
E. 26.
WIFE OF
FRANCIS H. BUTSEY

SIMEON H. WHITE
DIED
APRIL 24, 1854.
AGED 77 YEARS.
—
ELESTA
WIFE OF
DIED MARCH 4, 1864.
AGED 57 YEARS.

#6


SEARLES HILL CEMETERY
PHILLIPSTON, WORCESTER COUNTY, MA
MARTHA H. WOOD - APRIL 2003

MARBLE AND SLATE TABLETS OF THE WHITE FAMILY, TAKEN FROM
THE WEST SIDE OF THE CEMETERY, LOOKING NORTH EAST

MA - PHILLIPSTON (WORCESTER COUNTY) - SEARLES HILL CEMETERY 06.tif

PHOTO 6

WHITE FAMILY TABLETS, LOOKING NE

A black and white photograph of a gravestone in a cemetery. The stone is rectangular with a decorative, arched top. At the top of the arch is a carving of a winged cherub's face. Below the arch is a decorative horizontal band. The main body of the stone is inscribed with text. The background shows a wooded area with bare trees and other gravestones in the distance.

In Memory of
Miss Sulannah White,
daug' of Mr. Thomas
& Mrs. Prudence White,
who died Sep^r 13th 1790
In the 18th year
of her age.

#7

SEARLES HILL CEMETERY
PHILLIPSTON, WORCESTER COUNTY, MA

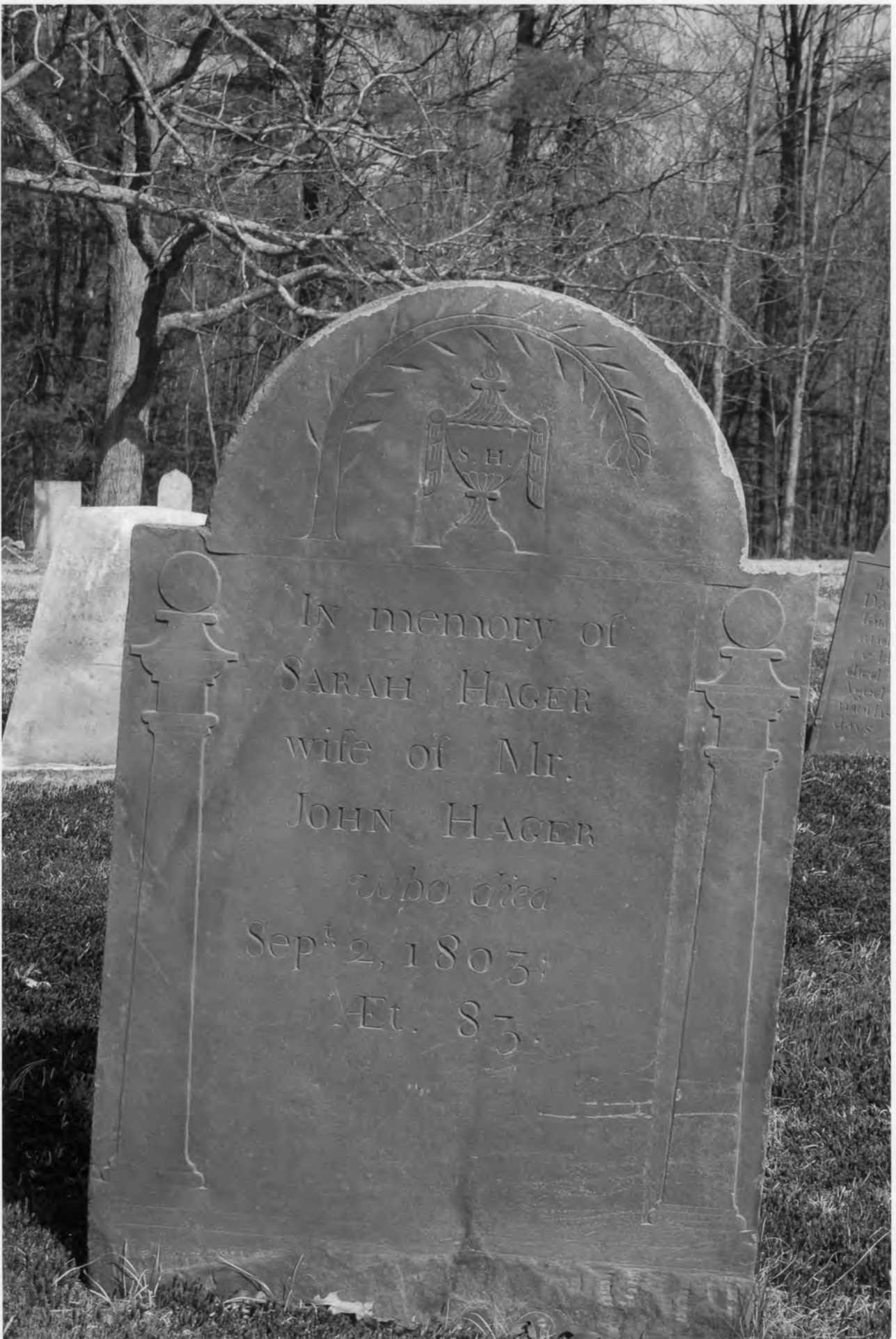
MARITA H. WAIN - APRIL 2003

THE SLATE MARKER OF SUSANNAH WHITE (D. 1790)
TAKEN FROM THE WEST SIDE, LOOKING EAST.

MA - PHILLIPSTON (WORCESTER COUNTY) - SEARLES HILL CEMETERY 07. tif

PHOTO 7

1790 MARKER of SUSANNAH WHITE, LOOKING E



In memory of
SARAH HAGER
wife of Mr.
JOHN HAGER
who died
Sep^r 2, 1803.
Et. 85.

Da
tem
an
ce
dial
Aged
months
days

#8
SEARLES HILL CEMETERY
PHILLIPSTON, WORCESTER COUNTY, MA
MIRIAM H. LYON - APRIL 2008

THE SLATE MARKER OF SARAH HAGER (D. 1803)
TAKEN FROM THE WEST SIDE, WORKING EAST.

MA - PHILLIPSTON (WORCESTER COUNTY) - SEARLES HILL CEMETERY 08. 17

PHOTO 8

SLATE MARKER 1803 SARAH HAGER, LOOKING E



ATHOL, MASSACHUSETTS

7.5 X 15 MINUTE SERIES (TOPOGRAPHIC)

SCALE 1:25 000
 1 CENTIMETER ON THE MAP REPRESENTS 250 METERS ON THE GROUND
 KILOMETERS 0 1 2 3 4
 METERS 0 1000 2000 3000 4000 5000
 FEET 0 1000 2000 3000 4000 5000

SEAZLES HILL CEMETERY (SOUTH CEMETERY)
Athol PHILLIPSTON MASSACHUSETTS
 1:25 000-scale metric topographic map

7.5 X 15 MINUTE QUADRANGLE SHOWING

- Contours and elevations in meters
- Highways, roads and other manmade structures
- Water features
- Woodland areas
- Geographic names

GEOLOGICAL SURVEY
 1988

Produced by the United States Geological Survey in cooperation with Massachusetts Department of Public Works
 Control by USGS, NOS/NOAA, and Commonwealth of Massachusetts agencies
 Compiled by photogrammetric methods from aerial photographs taken 1960; field checked 1981. Map edited 1988
 Supersedes Athol and Templeton 1:25,000-scale maps dated 1970
 Projection and 1000-meter grid, zone 18 Universal Transverse Mercator
 10,000-foot grid ticks based on Massachusetts coordinate system, mainland zone
 1927 North American Datum
 To place on the predicted North American Datum 1983, move the projection lines 5 meters south and 39 meters west as shown by dashed corner ticks
 There may be private inholdings within the boundaries of the National or State reservations shown on this map

CONTOUR INTERVAL 3 METERS
 NATIONAL GEODETIC VERTICAL DATUM OF 1929
 CONTROL ELEVATIONS SHOWN TO THE NEAREST 0.1 METER
 OTHER ELEVATIONS SHOWN TO THE NEAREST 0.5 METER

THIS MAP COMPLIES WITH NATIONAL MAP ACCURACY STANDARDS
 FOR SALE BY U.S. GEOLOGICAL SURVEY
 P.O. BOX 23286, DENVER, COLORADO 80225

CONVERSION TABLE		DECLINATION DIAGRAM		ADJOINING MAPS		
Meters	Feet	15° 15' N		1	2	3
1	3.2808	15° 15' W		4	5	
2	6.5617	20° 15' N		6	7	8
3	9.8425	20° 15' W				
4	13.1234	25° 15' N				
5	16.4042	25° 15' W				
6	19.6850	30° 15' N				
7	22.9659	30° 15' W				
8	26.2467	35° 15' N				
9	29.5275	35° 15' W				
10	32.8084	40° 15' N				

To convert meters to feet multiply by 3.2808
 To convert feet to meters multiply by 0.3048

UTM grid convergence (GM) and false magnetic declination (MM) at center of map
 Diagram is approximate

1 Northfield
 2 Winchendon
 3 Ashburnham
 4 Orange
 5 Fitchburg
 6 Shelburne
 7 Barre
 8 Sterling

ISBN 0-607-23477-6
 9 780607 234770

Topographic Map Symbols

Primary highway, hard surface
Secondary highway, hard surface
Light-duty road, hard or improved surface
Unimproved road, trail
Route marker: Interstate, U. S. State
Railroad: standard gage; narrow gage
Bridge: drawbridge
Ferrybridge; conveyor; underpass
Built-up area: only selected landmark buildings shown
House: barn; church; school; large structure
Boundary:	
National, with monument
State
County, parish
Civil township, precinct, district
Incorporated city, village, town
National or State reservation; small park
Land grant with monument; found section corner
U. S. public lands survey; range, township, section
Range; township section line; location approximate
Fence or field line
Power transmission line, located tower
Dam; dam with lock
Cemetery: grave
Campground; picnic area; U. S. location monument
Wellhead; water well; spring
Mine shaft; prospect; pit or cave
Control: horizontal station; vertical station; spot elevation
Contours: index; intermediate; supplementary; depression
Distorted surface: strip mine, lava; sand
Bathymetric contours: index; intermediate
Perennial lake and stream; intermittent lake and stream
Rapids, large and small; falls, large and small
Swamp; marsh
Submerged marsh; land subject to controlled inundation
Woodland: scattered trees
Scrub; mangrove
Orchard; vineyard

E 735980
 N 4712800

Seazles Hill Cemetery (South Cemetery)

ATHOL, MASSACHUSETTS
 42072-E1-TM-025
 1988



TOWN OF PHILLIPSTON
Board of Selectmen
PHILLIPSTON, MASSACHUSETTS
01331 - 9805

Telephone
(508) 249-6828
FAX Number
(508) 249-3356

4-25-2007

Massachusetts Historical Commission
220 Morrissey Boulevard
Boston, MA

RECEIVED
APR 27 2007
MASS. HIST. COMM

Dear Ms Friedberg,

The Board of Selectmen of Phillipston is happy to support the inclusion into the National Registry of Historic Places the Searles Hill Cemetery and the Shepard Cemetery.

Thank You,

Daniel Sanden
Clerk, Board of Selectmen
Phillipston



The Commonwealth of Massachusetts
William Francis Galvin, Secretary of the Commonwealth
Massachusetts Historical Commission

August 3, 2011

Mr. J. Paul Loether
National Register of Historic Places
Department of the Interior
National Park Service
1201 Eye Street, NW, 8th floor
Washington, DC 20005

Dear Mr. Loether:

Enclosed please find the following nomination form:

Searles Hill Cemetery, Phillipston (Worcester), MA

The nomination has been voted eligible by the State Review Board and has been signed by the State Historic Preservation Officer. The owners of the property were notified of pending State Review Board consideration 30 to 45 days before the meeting and were afforded the opportunity to comment.

One letter of support has been received.

Sincerely,

A handwritten signature in cursive script that reads "Betsy Friedberg".

Betsy Friedberg
National Register Director
Massachusetts Historical Commission

enclosure

cc: Martha Lyon, consultant
Maria Jane French, Phillipston Historical Commission
Thomas Brouillet, Chair, Phillipston Board of Selectmen
Phillipston Planning Board