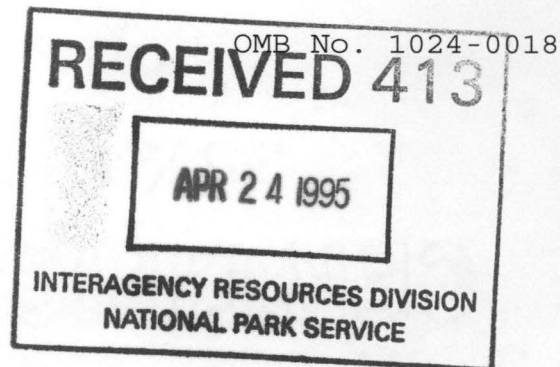


645



United States Department of the Interior
National Park Service

NATIONAL REGISTER OF HISTORIC PLACES
REGISTRATION FORM

=====

1. Name of Property

=====

historic name: Cove Creek Bridge

other name/site number: L00050

=====

2. Location

=====

street & number: State Highway 309 at crossing of Cove Creek

not for publication: N/A

city/town: Corley

vicinity: X

state: AR county: Logan

code: AR 083

zip code: 72855

=====

3. Classification

=====

Ownership of Property: Public-state

Category of Property: Structure

Number of Resources within Property:

Contributing

Noncontributing

<u> </u>	<u> </u>	buildings
<u> </u>	<u> </u>	sites
<u> 1 </u>	<u> </u>	structures
<u> </u>	<u> </u>	objects
<u> 1 </u>	<u> 0 </u>	Total

Number of contributing resources previously listed in the National Register: N/A

Name of related multiple property listing: Historic Bridges of Arkansas

=====

=====

4. State/Federal Agency Certification

=====

As the designated authority under the National Historic Preservation Act of 1986, as amended, I hereby certify that this X nomination _____ request for determination of eligibility meets the documentation standards for registering properties in the National Register of Historic Places and meets the procedural and professional requirements set forth in 36 CFR Part 60. In my opinion, the property X meets _____ does not meet the National Register Criteria. _____ See continuation sheet.

Cathryn A. Slater
Signature of certifying official

4-11-95
Date

Arkansas Historic Preservation Program

State or Federal agency and bureau

In my opinion, the property _____ meets _____ does not meet the National Register criteria. _____ See continuation sheet.

Signature of commenting or other official

Date

State or Federal agency and bureau

=====

5. National Park Service Certification

=====

I, hereby certify that this property is:

- ☒ entered in the National Register
_____ See continuation sheet.
☐ determined eligible for the
National Register
_____ See continuation sheet.
☐ determined not eligible for the
National Register
☐ removed from the National Register
_____ other (explain): _____

Edson H. Beall
Entered in the
National Register

5/26/95

Signature of Keeper

Date
of Action

=====

6. Function or Use

=====

Historic: TRANSPORTATION

Sub: Road-related

Current: TRANSPORTATION

Sub: Road-related

=====

7. Description

=====

Architectural Classification:

Other _____

Other Description: Masonry closed spandrel arch

Materials:	foundation	<u>Stone</u>	roof	<u>N/A</u>
	walls	<u>Concrete</u>	other	<u>Asphalt over concrete</u>

Describe present and historic physical appearance. X See continuation sheet.

=====

8. Statement of Significance

=====

Certifying official has considered the significance of this property in relation to other properties: Local.

Applicable National Register Criteria: C

Criteria Considerations (Exceptions): N/A

Areas of Significance: ENGINEERING

Period(s) of Significance: 1936-1939 _____

Significant Dates: 1936 _____

Significant Person(s): N/A

Cultural Affiliation: N/A _____

Architect/Builder: Unknown

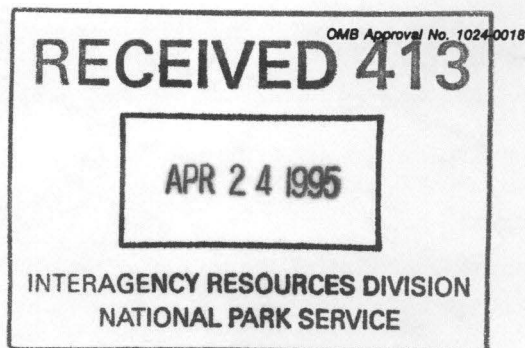
State significance of property, and justify criteria, criteria considerations, and areas and periods of significance noted above.

X See continuation sheet.

United States Department of the Interior
National Park Service

National Register of Historic Places Continuation Sheet

Section number 7 Page 1



Description

Located on State Highway 309 at its crossing of Cove Creek (approximately .4 miles south east of County Road #52 where it intersects with State Highway 309), the Cove Creek Bridge is of the stone masonry, closed spandrel arch type. The two arches each span a distance of 13 feet and the overall length is 26 feet. The deck measures 27.7 feet in width and the overall width is 30.7 feet. The entire bridge is of structural stone masonry construction with a deck composed of asphalt over a concrete subsurface. A later solid concrete barrier runs along both sides of the deck.

**United States Department of the Interior
National Park Service**

**National Register of Historic Places
Continuation Sheet**

Section number 8 Page 1

Significance

Constructed in 1936, the Cove Creek Bridge is associated with the *Arkansas Highway and Transportation Era* historic context and is of the stone masonry, closed spandrel arch type. Though the identity of its original designer does not survive, it was constructed in conjunction with the Arkansas State Highway Commission and thus may well have been designed by one of that state agency's engineers. Given its relatively intact condition it retains sufficient integrity to remain associated with its historic period and is thus locally eligible under Criterion C.

=====

9. Major Bibliographical References

=====

See "Historic Bridges of Arkansas" MPS Nomination, Section H.

___ See continuation sheet.

Previous documentation on file (NPS):

- preliminary determination of individual listing (36 CFR 67) has been requested.
- previously listed in the National Register
- previously determined eligible by the National Register
- designated a National Historic Landmark
- recorded by Historic American Buildings Survey # _____
- recorded by Historic American Engineering Record # _____

Primary Location of Additional Data:

- X State historic preservation office
- Other state agency
- Federal agency
- Local government
- University
- Other -- Specify Repository: _____

=====

10. Geographical Data

=====

Acreage of Property: Less than one

UTM References:	Zone	Easting	Northing	Zone	Easting	Northing
A	<u>15</u>	<u>443250</u>	<u>3894420</u>	B	<u>15</u>	_____
C	<u>15</u>	_____	_____	D	<u>15</u>	_____

___ See continuation sheet.

Verbal Boundary Description: ___ See continuation sheet.

Beginning at a point formed by the intersection of the southwestern edge of State Highway 309 with a perpendicular line running parallel with the northwestern end of the bridge and located approximately 25 feet to the northwest thereof, proceed southwesterly for a distance of approximately 25 feet to its intersection with a perpendicular line running parallel with the bridge's southwestern side; thence proceed southeasterly along said line for a distance of approximately 76 feet to its intersection with a perpendicular line; thence proceed northeasterly along said line for a distance of approximately 80.7 feet to its intersection with a perpendicular line; thence proceed northwesterly along said line for a distance of approximately 76 feet to its intersection with a perpendicular line; thence proceed southwesterly to the point of beginning.

Boundary Justification: ___ See continuation sheet.

This boundary includes all the property historically associated with this resource.

=====

11. Form Prepared By

=====

Name/Title: Ken Story, National Register/Survey Coordinator

Organization: Arkansas Historic Preservation Program Date: 04/04/95

Street & Number: 323 Center Street, Suite 1500 Telephone: (501) 324-9880

City or Town: Little Rock State: AR Zip: 72201

UNITED STATES DEPARTMENT OF THE INTERIOR
NATIONAL PARK SERVICE

NATIONAL REGISTER OF HISTORIC PLACES
EVALUATION/RETURN SHEET

REQUESTED ACTION: NOMINATION

PROPERTY NAME: Cove Creek Bridge

MULTIPLE NAME: Historic Bridges of Arkansas MPS

STATE & COUNTY: ARKANSAS, Logan

DATE RECEIVED: 4/24/95 DATE OF PENDING LIST: 5/10/95
DATE OF 16TH DAY: 5/26/95 DATE OF 45TH DAY: 6/08/95
DATE OF WEEKLY LIST:

REFERENCE NUMBER: 95000645

NOMINATOR: STATE

REASONS FOR REVIEW:

APPEAL: N DATA PROBLEM: N LANDSCAPE: N LESS THAN 50 YEARS: N
OTHER: N PDIL: N PERIOD: N PROGRAM UNAPPROVED: N
REQUEST: N SAMPLE: N SLR DRAFT: N NATIONAL: N

COMMENT WAIVER: N

☒ ACCEPT ☐ RETURN ☐ REJECT 5/26/95 DATE

ABSTRACT/SUMMARY COMMENTS: Entered in the
National Register

RECOM./CRITERIA _____

REVIEWER _____ DISCIPLINE _____

TELEPHONE _____ DATE _____

DOCUMENTATION see attached comments Y/N see attached SLR Y/N



COVE CREEK BRIDGE (STATE HWY. 309)

CORLEY VIC. LOGAN Co., AR

PHOTO BY T. FERGUSON

1/93

NEG. ON FILE AT AHPP

VIEW FROM SOUTH



COVE CREEK BRIDGE (STATE HWY. 309)

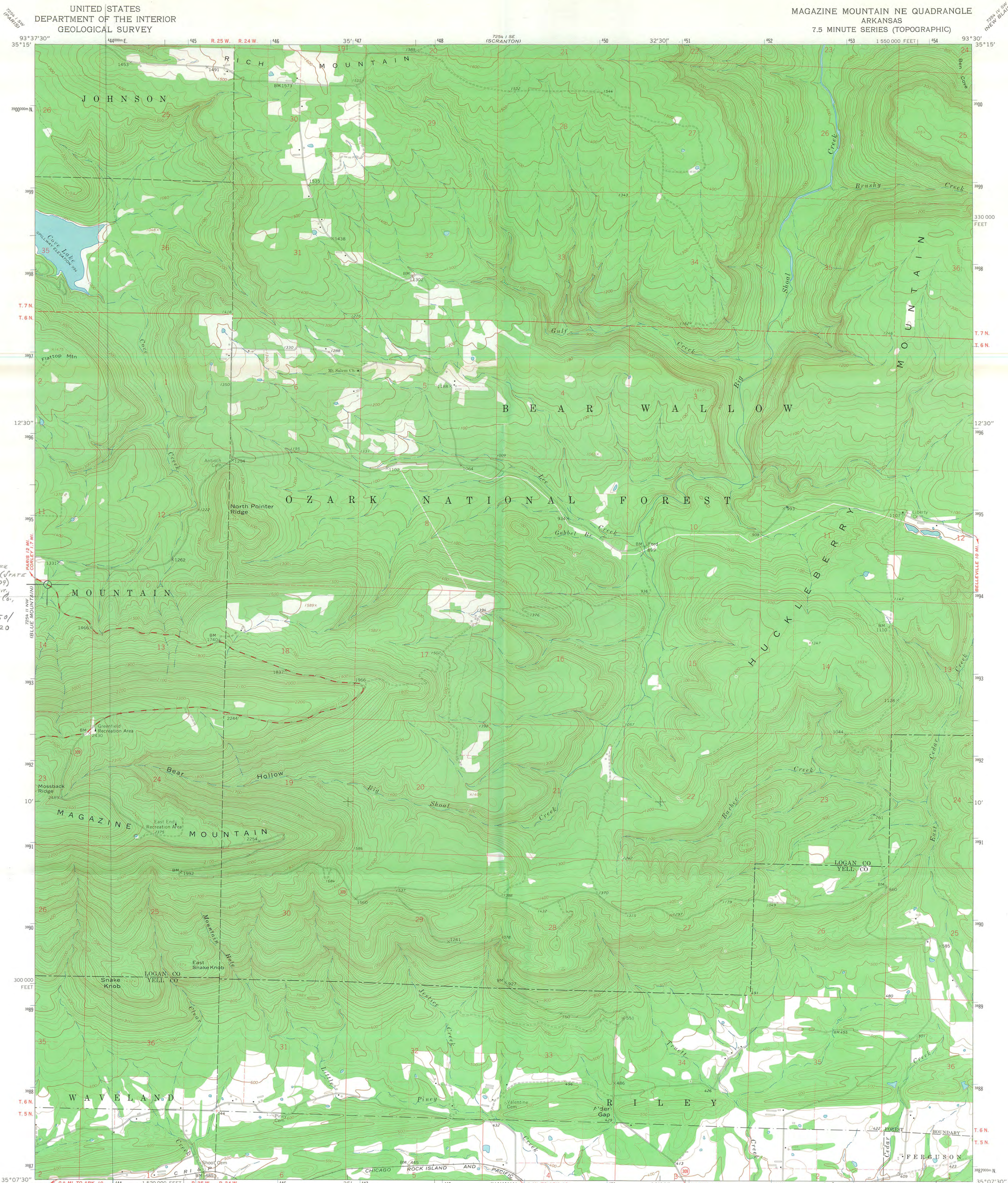
CORLEY VIC., LOGAN CO., AR

PHOTO BY T. FERGUSON

1/93

NEG. ON FILE AT AHPP

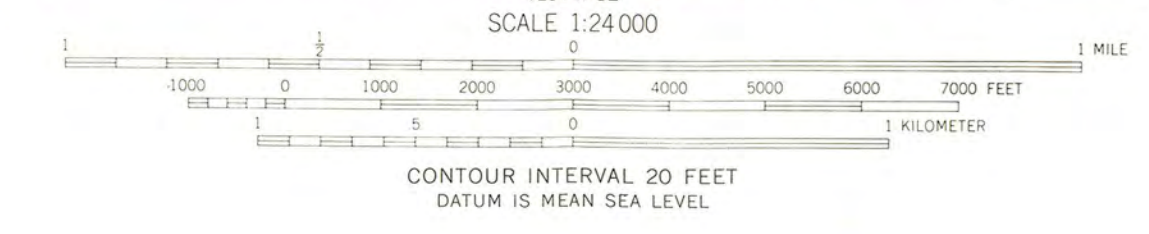
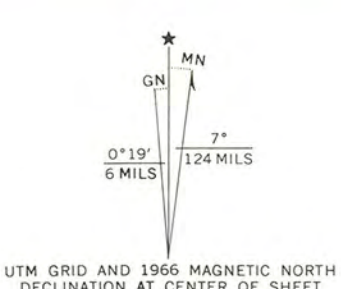
INTERIOR CULVERT DETAIL



COVE CREEK
BRIDGE (STATE
HIGHWAY 309)
CORRECTION
LOGAN CO.,
AR
15/443250/
3894420

(BLUE MOUNTAIN DAM)
7254 II NW
7254 II SW

Mapped, edited, and published by the Geological Survey
Control by USGS and USC&GS
Topography by photogrammetric methods from aerial
photographs taken 1962. Field checked 1966
Polyconic projection. 1927 North American datum
10,000-foot grid based on Arkansas coordinate system, north zone
1000-meter Universal Transverse Mercator grid ticks,
zone 15, shown in blue
Fine red dashed lines indicate selected fence and field lines where
generally visible on aerial photographs. This information is unchecked



ROAD CLASSIFICATION
Medium-duty — Light-duty
Unimproved dirt
State Route

MAGAZINE MOUNTAIN NE, ARK.
N3507.5—W9330.7.5

1966
AMS 7254 II NE—SERIES V884

THIS MAP COMPLIES WITH NATIONAL MAP ACCURACY STANDARDS
FOR SALE BY U. S. GEOLOGICAL SURVEY, DENVER, COLORADO 80225, OR WASHINGTON, D. C. 20242
AND BY THE ARKANSAS GEOLOGICAL COMMISSION, LITTLE ROCK, ARKANSAS 72201
A FOLDER DESCRIBING TOPOGRAPHIC MAPS AND SYMBOLS IS AVAILABLE ON REQUEST

Cove Creek Bridge
Name of Property

Logan County, Arkansas
County and State

United States Department of the Interior
National Park Service

National Register of Historic Places Continuation Sheet

Section number 8 Page

Additional research has revealed that the Cove Creek Bridge was built by the Works Progress Administration.

(Information from Bob Scoggin, Historic Bridge Coordinator, Arkansas State Highway and Transportation Department)

UNITED STATES DEPARTMENT OF THE INTERIOR
NATIONAL PARK SERVICE

NATIONAL REGISTER OF HISTORIC PLACES
EVALUATION/RETURN SHEET

REQUESTED ACTION: ADDITIONAL DOCUMENTATION

PROPERTY Cove Creek Bridge
NAME:

MULTIPLE Historic Bridges of Arkansas MPS
NAME:

STATE & COUNTY: ARKANSAS, Logan

DATE RECEIVED: 12/10/03 DATE OF PENDING LIST:
DATE OF 16TH DAY: DATE OF 45TH DAY: 1/23/04
DATE OF WEEKLY LIST:

REFERENCE NUMBER: 95000645

NOMINATOR: STATE

REASONS FOR REVIEW:

APPEAL: N DATA PROBLEM: N LANDSCAPE: N LESS THAN 50 YEARS: N
OTHER: N PDIL: N PERIOD: N PROGRAM UNAPPROVED: N
REQUEST: N SAMPLE: N SLR DRAFT: N NATIONAL: N

COMMENT WAIVER: N

☒ ACCEPT ☐ RETURN ☐ REJECT _____ DATE

ABSTRACT/SUMMARY COMMENTS:

~~Additional Documentation Accepted~~

RECOM./CRITERIA Accept

REVIEWER Elsa Ball

DISCIPLINE Historic

TELEPHONE _____

DATE 12/30/03

DOCUMENTATION see attached comments Y/N see attached SLR Y/N



The Department of Arkansas Heritage

Mike Huckabee, Governor
Cathie Matthews, Director

Arkansas Arts Council

Arkansas Natural Heritage
Commission

Historic Arkansas Museum

Delta Cultural Center

Old State House Museum



Arkansas Historic Preservation Program

1500 Tower Building
323 Center Street
Little Rock, AR 72201

(501)324-9880

fax: (501)324-9184

tdd: (501)324-9811

e-mail:

info@arkansaspreservation.org

website:

www.arkansaspreservation.org

December 4, 2003

Carol D. Shull
Chief of Registration
United States Department of the Interior
National Register of Historic Places
National Park Service
8th Floor
1201 Eye Street, NW
Washington, DC 20005

RE: Cove Creek Bridge – Logan County, Arkansas

Dear Carol:

We are enclosing for your review additional documentation for the above-referenced property. The Arkansas Historic Preservation Program has complied with all applicable nominating procedures and notification requirements in the nomination process.

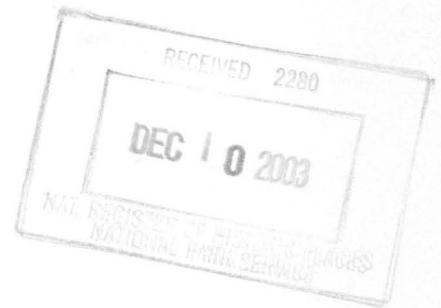
If you need further information, please call Ralph S. Wilcox of my staff at (501) 324-9787. Thank you for your cooperation in this matter.

Sincerely,

Cathie Matthews
State Historic Preservation Officer

CM:rsw

Enclosure



An Equal Opportunity Employer



[illegible]