



PRESCRIPTIONS

CHANNEY'S

Rexall

PHARMACY

Chevrolet
PHARMACY

Car Wash

Car Wash

105 and 113 (l. to r.) Carrollton Avenue
(elements 1 & 3), looking northeasterly
at the southerly facades and westerly side
elevation of 113 (element 3)

Central Commercial and Railroad Historic
District *MRA*

Greenwood, Leflore County, Mississippi
Mississippi Department of Archives & History

Mary Ellen Bowen

September 1982 (verified May 1985)

Photo 1 of 73



110 Carrollton Avenue (element 2) and 501
Howard Street (element 72), looking south-
westerly at the northerly facades
Central Commercial and Railroad Historic
District *MRA*
Greenwood, Leflore County, Mississippi
Mississippi Department of Archives & History
Mary Ellen Bowen
September 1982 (verified May 1985)
Photo 2 of 73



201 (element 5) and 205 (element 6)
Carrollton Avenue (l. to r.), looking norther-
ly at the southerly facades
Central Commercial and Railroad Historic
District *MRA*
Greenwood, Leflore County, Mississippi
Mississippi Department of Archives & History
Mary Ellen Bowen
September 1982 (verified May 1985)
Photo 3 of 73



200-204 Carrollton (element 4) and 515 Main
(element 120) (l. to r.), looking south-
easterly

Central Commercial and Railroad Historic
District *mRA*

Greenwood, Leflore County, Mississippi

Mississippi Department of Archives & History

Mary Ellen Bowen

September 1982 (verified May 1985)

Photo 4 of 73



212 (element 8) and 216 (element 9)
Carrollton Avenue (r. to l.), looking south
westerly at the northerly facades
Central Commercial and Railroad Historic
District *mRA*
Greenwood, Leflore County, Mississippi
Mississippi Department of Archives & History
Mary Ellen Bowen
September 1982 (verified May 1985)
Photo 5 of 73



218 Carrollton Avenue (element 11), looking
southwesterly at the northerly facade and
easterly side elevation fronting Walthall
Central Commercial and Railroad Historic
District

MRA
Greenwood, Leflore County, Mississippi
Mississippi Department of Archives & History

Mary Ellen Bowen

September 1982 (verified May 1985)

Photo 6 of 73



306 Carrollton Avenue (elements 17 and 18)
(r. to l.), looking southeasterly at the
northerly facades and western side elevation
of element 17 fronting Walthall
Central Commercial and Railroad Historic
District *MRA*
Greenwood, Leflore County, Mississippi
Mississippi Department of Archives & History
Mary Ellen Bowen
September 1982 (verified May 1985)
Photo 7 of 73



310-12 Carrollton Avenue (element 19),
looking southeasterly at the northerly
elevation

Central Commercial and Railroad Historic
District *MRA*

Greenwood, Leflore County, Mississippi

Mississippi Department of Archives & History

Mary Ellen Bowen

September 1982 (verified May 1985)

Photo 8 of 73



GIARDINA BUILDING

BARRANCO'S

Lambert's Gifts

Sav SHOES

PAPER BACK BOOKS 20¢

205 (element 6), 207 (element 7), and 215-17
(element 10) Carrollton Avenue (l. to r.),
looking northeasterly at the northerly
facades

Central Commercial and Railroad Historic
District *MRA*

Greenwood, Leflore County, Mississippi
Mississippi Department of Archives & History

Mary Ellen Bowen

September 1982 (verified May 1985)

Photo 9 of 73



215-17 (element 10) and 225-231-233 (elements
12, 13, 14) Carrollton (l. to r.), looking
northeasterly at the southerly facades
Central Commercial and Railroad Historic
District *MRA*
Greenwood, Leflore County, Mississippi
Mississippi Department of Archives & History
Mary Ellen Bowen
September 1982 (verified May 1985)
Photo 10 of 73



225 (elements 12 & 13) and 231-33 (element
14) Carrollton (l. to r.), looking north-
westerly at the southerly facades and eastern
side elevation

Central Commercial and Railroad Historic
District *MRA*

Greenwood, Leflore County, Mississippi
Mississippi Department of Archives & History

Mary Ellen Bowen

September 1982 (verified May 1985)

Photo 11 of 73



225 (element 13) and 231-33 (element 14)
Carrollton, looking southwesterly at the
eastern side elevation

Central Commercial and Railroad Historic
District *MRA*

Greenwood, Leflore County, Mississippi

Mississippi Department of Archives & History

Mary Ellen Bowen

September 1982 (verified May 1985)

Photo 12 of 73



J & J HARDWARE &
WELDING SUPPLY
INDUSTRIAL GASES
WELDING EQUIPMENT REPAIRS

BALDWIN
Welding - Gases - Electrical - Supplies

CHETM
Welding - Gases - Electrical - Supplies

453-4621

301 (element 15) and 305-07 (element 16)
Carrollton (l. to r.), looking northwesterly
at the southerly facades
Central Commercial and Railroad Historic
District *MRA*
Greenwood, Leflore County, Mississippi
Mississippi Department of Archives & History
Mary Ellen Bowen
September 1982 (verified May 1985)
Photo 13 of 73



225 (elements 12 & 13), 231-33 (element 14),
301 (element 15), 305-07 (element 16), 313
(element 20) and 315 (element 21) Carrollton
Avenue (l. to r.), looking northwesterly at
the southerly facades

Central Commercial and Railroad Historic
District *MRA*

Greenwood, Leflore County, Mississippi

Mississippi Department of Archives & History

Mary Ellen Bowen

September 1982 (verified May 1985)

Photo 14 of 73



315 (element 21), 317 (element 22 before recent remodeling), and 321 (element 23) Carrollton (l. to r.), looking northwesterly at the southerly facades and eastern side elevations

Central Commercial and Railroad Historic District *MRA*

Geenwood, Leflore County, Mississippi
Mississippi Department of Archives & History
Mary Ellen Bowen

September 1982 (verified May 1985)

Photo 15 of 73



401 (element 24) and 405-23 (element 25)
Carrollton (l. to r.), looking northeasterly
at the southerly facades and westerly side
elevation of element 24.

Central Commercial and Railroad Historic
District *MRA*

Greenwood, Leflore County, Mississippi

Mississippi Department of Archives & History

Mary Ellen Bowen

September 1982 (verified May 1985)

Photo 16 of 73



405-23 Carrollton (element 25), looking
northeasterly at the southerly facade
Central Commercial and Railroad Historic
District *MRA*

Greenwood, Leflore County, Mississippi
Mississippi Department of Archives & History

Mary Ellen Bowen

September 1982 (verified May 1985)

Photo 17 of 73



405-23 Carrollton (element 25) and 511
Lamar (element 101) (r. to l.), looking
northerly at the southerly facade of element
25 and westerly facade of element 101
Central Commercial and Railroad Historic
District *MR A*
Greenwood, Leflore County, Mississippi
Mississippi Department of Archives & History
Mary Ellen Bowen
September 1982 (verified May 1985)
Photo 18 of 73



506 Carrollton (element 26), looking
southerly at the northerly side elevation
Central Commercial and Railroad Historic
District *NRA*
Greenwood, Leflore County, Mississippi
Mississippi Department of Archives & History
Mary Ellen Bowen
September 1982 (verified May 1985)
Photo 19 of 73



600 Carrollton Avenue (element 27), looking
southeasterly across the railroad tracks
at the compress office and storage yard

Central Commercial and Railroad

Historic District

Greenwood, ^{MR A}Leflore County, Mississippi

Mississippi Department of Archives and History

Mary Warren Miller

June 1985

Photo 20 of 73



704-10 East Carrollton Avenue (element 29),
looking southerly at the northerly facade

Central Commercial and Railroad

Historic District

Greenwood, ^{MRA}Leflore County, Mississippi

Mississippi Department of Archives and History

Mary Warren Miller

June 1985

Photo 21 of 73



718-720 Carrollton Avenue (element 33),
looking southwesterly at the northerly
facade

Central Commercial and Railroad Historic
District *MRA*

Greenwood, Leflore County, Mississippi

Mississippi Department of Archives & History

Mary Ellen Bowen

September 1982 (verified May 1985)

Photo 22 of 73



FIRE STATION NO 2

723 East Carrollton Avenue (element 34),
looking northerly, the southerly facade
Central Commercial and Railroad

Historic District

Greenwood,^{MPA} Leflore County, Mississippi

Mississippi Department of Archives and History

Mary Warren Miller

June 1985

Photo 23 of 73



729 East Carrollton (element 35),
looking southerly, the northerly facade
Central Commercial and Railroad

Historic District

Greenwood, ^{MR}Leflore County, Mississippi
Mississippi Department of Archives and History

Mary Warren Miller

June 1985

Photo 24 of 73



103 Church Street (element 37), looking
southeasterly, the northerly facade and
westerly side elevation

Central Commercial and Railroad Historic
District *MRA*

Greenwood, Leflore County, Mississippi

Mississippi Department of Archives & History

Mary Ellen Bowen

September 1982 (verified May 1985)

Photo 25 of 73



BUSINESS
MACHINES

Sher
Stationery Co

OFFICE SUPPLIES
OFFICE FURNITURE

STOP

211 Fulton Street (element 41), looking
easterly, the westerly facade
Central Commercial and Railroad Historic
District *ARA*

Greenwood, Leflore County, Mississippi
Mississippi Department of Archives & History

Mary Ellen Bowen

September 1982 (verified May 1985)

Photo 26 of 73



THE
RUSSELL
COMPANY

505 Fulton Street (element 42), looking
southeasterly, the westerly facade
Central Commercial and Railroad Historic
District *MRA*
Greenwood, Leflore County, Mississippi
Mississippi Department of Archives & History
Mary Ellen Bowen
September 1982 (verified May 1985)
Photo 27 of 73



215 (element 44) and 219-21 (element 46)
Howard Street, looking southeasterly, the
westerly facades and northerly side elevation
of element 44

Central Commercial and Railroad Historic
District *MRA*

Greenwood, Leflore County, Mississippi
Mississippi Department of Archives & History
Mary Warren Miller

June 1985

Photo 28 of 73



LADY
Evelyn's

STOUT
&
TALL

LOANS

CITY FINANCE

216-220 Howard Street (element 45), looking
northwesterly, the easterly facade
Central Commercial and Railroad Historic
District *MRA*
Greenwood, Leflore County, Mississippi
Mississippi Department of Archives & History
Mary Ellen Bowen
September 1982 (verified May 1985)
Photo 29 of 73



222 Howard Street (element 47), looking
southwesterly at the easterly facade

Central Commercial and Railroad

Historic District

Greenwood, ^{MRA}Leflore County, Mississippi

Mississippi Department of Archives and History

Mary Warren Miller

June 1985

Photo 30 of 73



300 (element 49) and 310 (element 53) Howard Street, looking northwesterly, the easterly facades and southerly side elevation of element 53

Central Commercial and Railroad Historic District *MRA*

Greenwood, Leflore County, Mississippi
Mississippi Department of Archives & History

Mary Ellen Bowen

September 1982 (verified May 1985)

Photo 31 of 73



301-03 (element 50) and 305 (element 51)
Howard Street, looking southeasterly, the
westerly facades and northern side elevation
of element 50

Central Commercial and Railroad Historic
District *MRA*

Greenwood, Leflore County, Mississippi
Mississippi Department of Archives & History
Mary Ellen Bowen

September 1982 (verified May 1985)

Photo 32 of 73



HOME & AUTO
STORE

UMBRELLA
STAIRS
RACQUETS
OVERSEAS

SALE

ONE WAY

2P420

SE 9

309 Howard Street (element 52), looking
southeasterly, the westerly facade
Central Commercial and Railroad Historic
District
Greenwood, ^{MRA} Leflore County, Mississippi
Mississippi Department of Archives & History
Mary Ellen Bowen
September 1982 (verified May 1985)
Photo 33 of 73



312-14-20 Howard Street (element 54),
looking northwesterly, the easterly elevation
fronting Howard and southerly elevation
fronting Church
Central Commercial and Railroad Historic
District
Greenwood, Leflore County, Mississippi
Mississippi Department of Archives & History
Mary Ellen Bowen
September 1982 (verified May 1985)
Photo 34 of 73



313 (element 55), 315 (element 56), and 325
(element 57) Howard Street, looking north-
easterly, the westerly facades

Central Commercial and Railroad Historic
District *MPA*

Greenwood, Leflore County, Mississippi

Mississippi Department of Archives & History

Mary Ellen Bowen

September 1982 (verified May 1985)

Photo 35 of 73



400 Howard Street (element 58), looking
southwesterly, at the elevations fronting
Howard and Church Streets
Central Commercial and Railroad Historic
District *MRA*
Greenwood, Leflore County, Mississippi
Mississippi Department of Archives & History
Mary Ellen Bowen
September 1982 (verified May 1985)
Photo 36 of 73



400 (element 58), 406-08 (element 60), and
410 (element 62) Howard Street, looking
southwesterly, the easterly facades
Central Commercial and Railroad Historic
District *NRH*
Greenwood, Leflore County, Mississippi
Mississippi Department of Archives & History
Mary Ellen Bowen
September 1982 (verified May 1985)
Photo 37 of 73



NO
LEFT
TURN

ONE WAY

NO
LEFT
TURN

401 Howard Street (element 59), looking
southeasterly, the corner entrance and the
side elevations fronting Howard and Church
Streets

Central Commercial and Railroad Historic
District *MRA*

Greenwood, Leflore County, Mississippi
Mississippi Department of Archives & History

Mary Ellen Bowen

September 1982 (verified May 1985)

Photo 38 of 73

Synbar Gardens

FACTORY OUTLET
DRESS SHOP



SALE

SALE



406-08 (element 60) and 410 (element 62)
Howard Street, looking southwesterly the
easterly facades
Central Commercial and Railroad Historic
District *MRA*
Greenwood, Leflore County, Mississippi
Mississippi Department of Archives & History
Mary Ellen Bowen
September 1982 (verified May 1985)
Photo 39 of 73



City Furniture Co.
PRICE · QUALITY · TERMS

PRIVATE PARKING ONLY

414 Howard Street (element 65), looking
southwesterly, the easterly facade and
northerly side elevation

Central Commercial and Railroad Historic
District *MRA*

Greenwood, Leflore County, Mississippi

Mississippi Department of Archives & History

Mary Ellen Bowen

September 1982 (verified May 1985)

Photo 40 of 73



401 (element 59) and 409 (element 61) Howard
Street, looking northeasterly at the western
elevation of element 59 and the easterly
facade of element 61

Central Commercial and Railroad Historic
District *MRA*

Greenwood, Leflore County, Mississippi

Mississippi Department of Archives & History

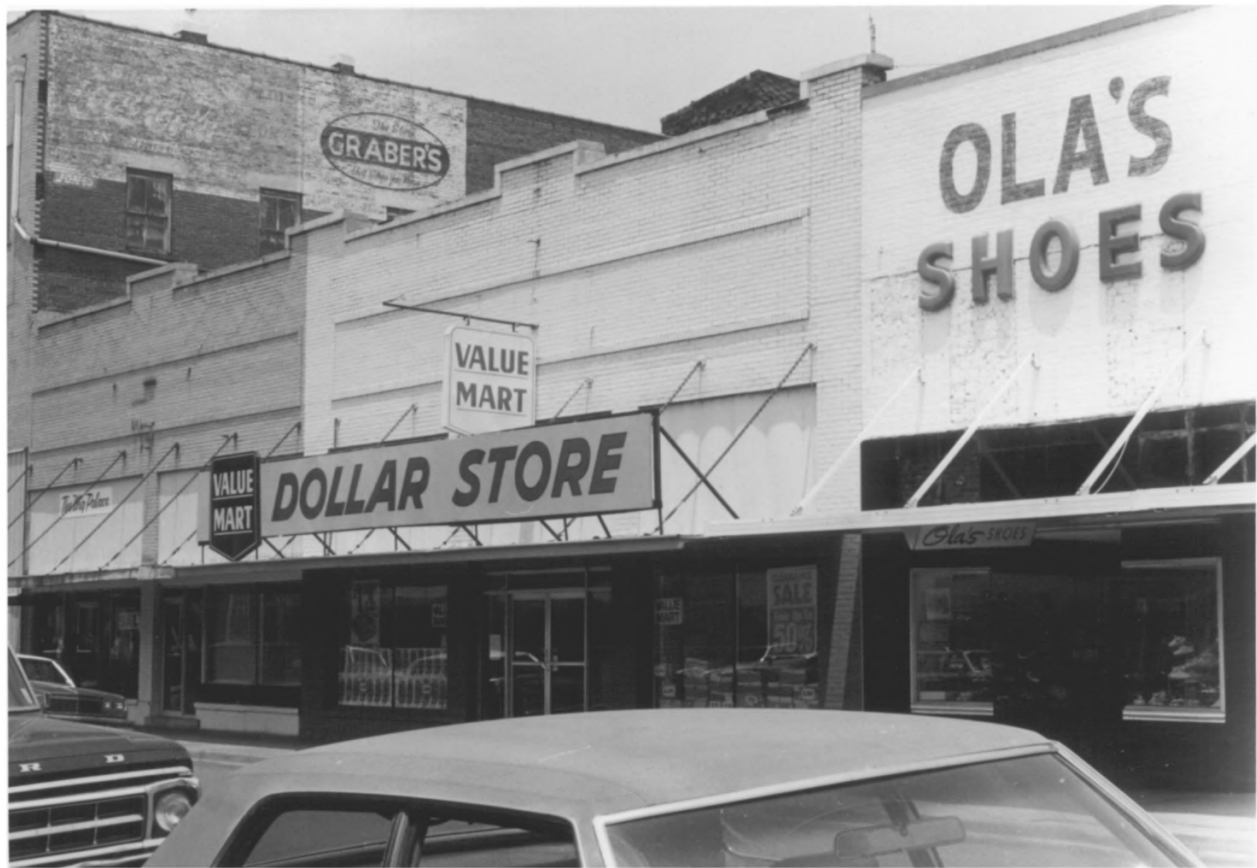
Mary Ellen Bowen

September 1982 (verified May 1985)

Photo 41 of 73



418 Howard Street (element 67), looking
southwesterly, the easterly facade
Central Commercial and Railroad Historic
District *MRA*
Greenwood, Leflore County, Mississippi
Mississippi Department of Archives & History
Mary Ellen Bowen
September 1982 (verified May 1985)
Photo 42 of 73



413-15 (element 64) and 417 (element 66)
Howard Street (l. to r.), looking north-
easterly, the westerly facades

Central Commercial and Railroad Historic
District *MRA*

Greenwood, Leflore County, Mississippi

Mississippi Department of Archives & History

Mary Ellen Bowen

September 1982 (verified May 1985)

Photo 43 of 73



420 (element 69), 500 (element 71), and
504 (element 74) Howard Street, looking
southwesterly at the easterly facades and
northerly side elevations

Central Commercial and Railroad Historic
District

^{MRA}
Greenwood, Leflore County, Mississippi
Mississippi Department of Archives & History

Mary Ellen Bowen

September 1982 (verified May 1985)

Photo 44 of 73



419-21-23-25 Howard Street (element 68),
looking northeasterly at the westerly
facades and southerly side elevation
Central Commercial and Railroad Historic
District *ARA*

Greenwood, Leflore County, Mississippi
Mississippi Department of Archives & History
Mary Ellen Bowen
September 1982 (verified May 1985)
Photo 45 of 73



110-12 (element 77), 114 (element 78), 116
(element 79), 116 one-half (element 80), and
118 (element 81) Johnson Street (l. to r.),
looking southeasterly at the northerly facades
Central Commercial and Railroad Historic
District *MRA*

Greenwood, Leflore County, Mississippi
Mississippi Department of Archives & History
Mary Ellen Bowen
September 1982 (verified May 1985)
Photo 46 of 73



200-02 (element 82), 204-06 (element 83),
and 208 (element 84) Johnson Street (r. to l.)
looking southeasterly at the northerly facades
Central Commercial and Railroad Historic

District *ARA*

Greenwood, Leflore County, Mississippi

Mississippi Department of Archives & History

Mary Ellen Bowen

September 1982 (verified May 1985)

Photo 47 of 73



208C (element 85), 210 (element 86), and
212-220 (element 87) Johnson St. (r. to l.)
looking southeasterly at the northern facades
Central Commercial and Railroad Historic
District *MRA*
Greenwood, Leflore County, Mississippi
Mississippi Department of Archives & History
Mary Ellen Bowen
September 1982 (verified May 1985)
Photo 48 of 73



300-02-04-06-08-10-12-14 (element 88), 316-18-
20 (element 89), and 322-24 (element 90)

Johnson St., looking southwesterly at the
northerly facades

Central Commercial and Railroad Historic
District *MRA*

Greenwood, Leflore County, Mississippi

Mississippi Department of Archives & History

Mary Ellen Bowen

September 1982 (verified May 1985)

Photo 49 of 73



M. DIAMONDS

Kornfeld's Inc.

Coca-Cola
5¢ SOLD EVERYWHERE
Delicious

316-18-20 (element 89) and 322-24 (element
90) Johnson Street, looking southeasterly at
the northerly facades

Central Commercial and Railroad Historic
District *MRA*

Greenwood, Leflore County, Mississippi
Mississippi Department of Archives & History
Mary Ellen Bowen

September 1982 (verified May 1985)

Photo 50 of 73



322-24 (element 90) and 326 (element 91)
Johnson Street, looking southerly at the
northerly facades

Central Commercial and Railroad Historic
District *MRA*

Greenwood, Leflore County, Mississippi

Mississippi Department of Archives & History

Mary Ellen Bowen

September 1982 (verified May 1985)

Photo 51 of 73



129 (element 93), 131-33-35 (element 94),
and 139 (element 95) Johnson Street, looking
southeasterly, the northerly facades
Central Commercial and Railroad Historic
District *MRA*

Greenwood, Leflore County, Mississippi
Mississippi Department of Archives & History

Mary Ellen Bowen

September 1982 (verified May 1985)

Photo 52 of 73



140 Johnson Street (element 96), looking
southeasterly, the northerly rear elevation
and westerly side elevation

Central Commercial and Railroad Historic
District *nRA*

Greenwood, Leflore County, Mississippi

Mississippi Department of Archives & History

Mary Ellen Bowen

September 1982 (verified May 1985)

Photo 53 of 73



503 (element 99) and 511 (element 101) Lamar
Street, looking southeasterly, the westerly
facades

Central Commercial and Railroad Historic
District *MRA*

Greenwood, Leflore County, Mississippi

Mississippi Department of Archives & History

Mary Ellen Bowen

September 1982 (verified May 1985)

Photo 54 of 73



511 Lamar Street (element 101), looking
northeasterly, the westerly facade and
southerly side elevation

Central Commercial and Railroad Historic
District *MRA*

Greenwood, Leflore County, Mississippi
Mississippi Department of Archives & History
Mary Ellen Bowen

September 1982 (verified May 1985)

Photo 55 of 73



300 Main Street (element 104), looking
westerly, the easterly elevation fronting
Main

Central Commercial and Railroad Historic
District *MRA*

Greenwood, Leflore County, Mississippi

Mississippi Department of Archives & History

Mary Ellen Bowen

September 1982 (verified May 1985)

Photo 56 of 73



310 Main Street (element 105), looking
southwesterly, the easterly facade and
northerly side elevation

Central Commercial and Railroad Historic
District *MRA*

Greenwood, Leflore County, Mississippi
Mississippi Department of Archives & History

Mary Ellen Bowen

September 1982 (verified May 1985)

Photo 57 of 73



312 (element 106), 314 (element 107), and
324 (element 108), Main Street, looking
southwesterly at the easterly facades
Central Commercial and Railroad Historic
District *MRA*

Greenwood, Leflore County, Mississippi
Mississippi Department of Archives & History

Mary Ellen Bowen

September 1982 (verified May 1985)

Photo 58 of 73



324 Main Street (element 108), looking
southwesterly at the easterly facade
Central Commercial and Railroad Historic
District *MRA*

Greenwood, Leflore County, Mississippi
Mississippi Department of Archives & History

Mary Ellen Bowen

September 1982 (verified May 1985)

Photo 59 of 73



ONE
WAY
←

Delta
STEAM LAUNDRY

Santone
Dry Cleaning & Tailoring

Storage

407 Main Street (element 110), looking
southeasterly, the westerly facade
Central Commercial and Railroad Historic
District *MRA*
Greenwood, Leflore County, Mississippi
Mississippi Department of Archives & History
Mary Ellen Bowen
September 1982 (verified May 1985)
Photo 60 of 73



411 Main Street (element 112), looking
northeasterly, the westerly facade and
southerly side elevation

Central Commercial and Railroad Historic
District *MRA*

Greenwood, Leflore County, Mississippi

Mississippi Department of Archives & History

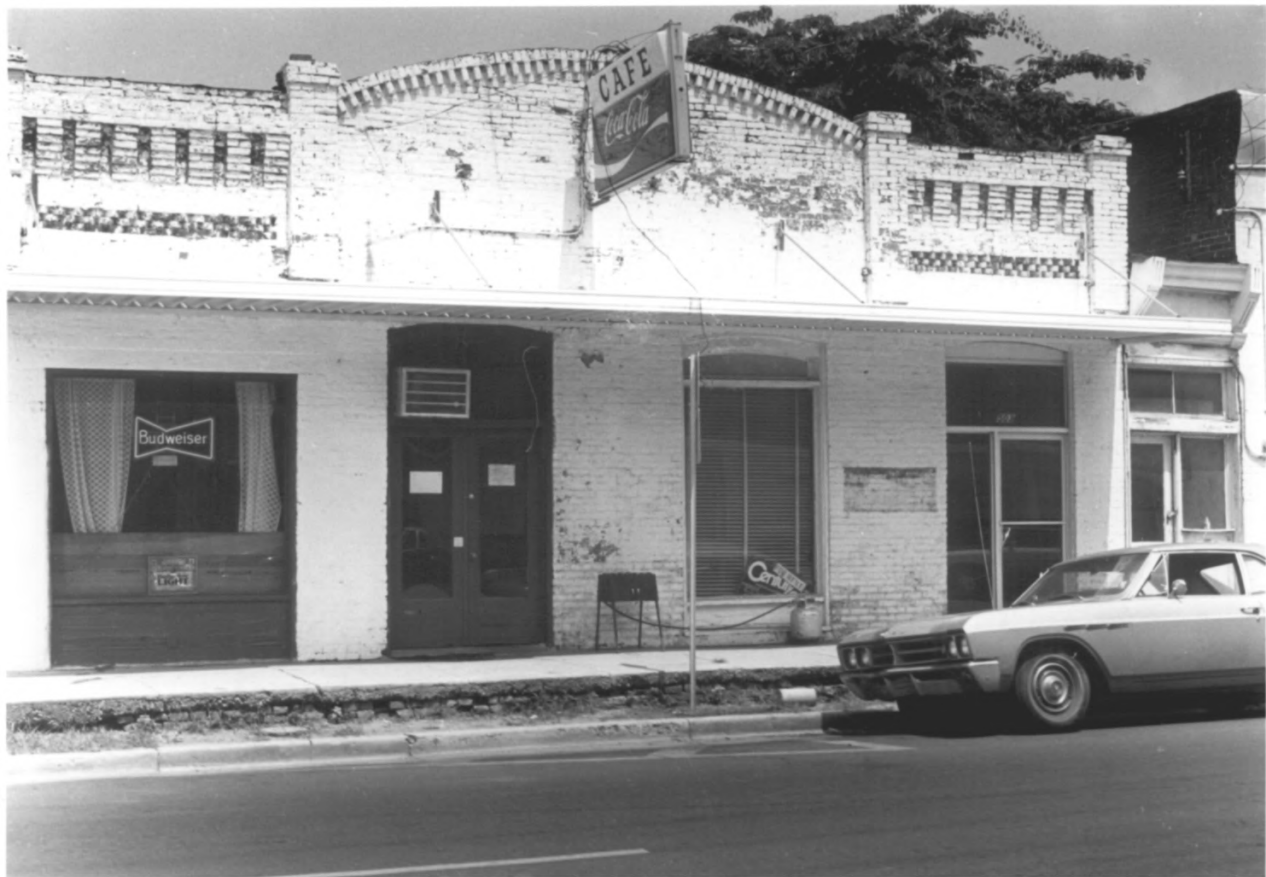
Mary Ellen Bowen

September 1982 (verified May 1985)

Photo 61 of 73



416 (element 114) and 500-02 (element 115)
Main Street, looking westerly at the
easterly facades
Central Commercial and Railroad Historic
District ^{MRA}
Greenwood, Leflore County, Mississippi
Mississippi Department of Archives & History
Mary Ellen Bowen
September 1982 (verified May 1985)
Photo 62 of 73



503 Main Street (element 116), looking
easterly, the westerly facade
Central Commercial and Railroad Historic
District *MRA*
Greenwood, Leflore County, Mississippi
Mississippi Department of Archives & History
Mary Ellen Bowen
September 1982 (verified May 1985)
Photo 63 of 73



506 Main Street (element 118), looking
northwesterly, the southerly side elevation
fronting on Carrollton and the easterly
elevation fronting on Main
Central Commercial and Railroad Historic
District *MRA*
Greenwood, Leflore County, Mississippi
Mississippi Department of Archives & History
Mary Ellen Bowen
September 1982 (verified May 1985)
Photo 64 of 73



508 Main Street (element 119), looking
southwesterly, the easterly facade fronting
on Main and the northerly side elevation
fronting on Carrollton

Central Commercial and Railroad Historic
District *MRA*

Greenwood, Leflore County, Mississippi

Mississippi Department of Archives & History

Mary Ellen Bowen

September 1982 (verified May 1985)

Photo 65 of 73

DELTA FEED CO.

DELTA FEED CO.

INSECTICIDES
FERTILIZER
FEED & SEED



515 Main Street (element 120), looking
northeasterly, the westerly Main St. facade
and the southerly side elevation fronting
on the railroad and Johnson Street
Central Commercial and Railroad Historic
District *MRA*

Greenwood, Leflore County, Mississippi
Mississippi Department of Archives & History
Mary Ellen Bowen
September 1982 (verified May 1985)
Photo 66 of 73



607 Main Street (element 123), looking
easterly, the westerly facade
Central Commercial and Railroad Historic
District *MRA*
Greenwood, Leflore County, Mississippi
Mississippi Department of Archives & History
Mary Warren Miller
June 1985
Photo 67 of 73



608 (element 124) and 610 (element 126)
Main Street, looking westerly at the easterly
facades

Central Commercial and Railroad Historic
District

MRA
Greenwood, Leflore County, Mississippi
Mississippi Department of Archives & History

Mary Warren Miller

June 1985

Photo 68 of 73



613 Main Street (element 128), looking
easterly at the westerly facade
Central Commercial and Railroad Historic
District *4RA*
Greenwood, Leflore County, Mississippi
Mississippi Department of Archives & History
Mary Warren Miller
June 1985
Photo 69 of 73



105-07-09 Pearl Street (element 129),
looking northwesterly, the southerly facade
Central Commercial and Railroad Historic
District ^{MRA}
Greenwood, Leflore County, Mississippi
Mississippi Department of Archives & History
Mary Ellen Bowen
September 1982 (verified May 1985)
Photo 70 of 73



HISTORIC BLANTONIA HOUSE

LINES FLORIST

401 Walthall Street (element 133), looking
easterly at the westerly facade
Central Commercial and Railroad Historic
District *MRA*
Greenwood, Leflore County, Mississippi
Mississippi Department of Archives & History
Mary Warren Miller
June 1985
Photo 71 of 73



410 (element 137) and 412 (element 138)
Walthall Street, looking southwesterly,
the easterly facades and northerly side
elevations

Central Commercial and Railroad Historic
District *MRA*

Greenwood, Leflore County, Mississippi

Mississippi Department of Archives & History

Mary Ellen Bowen

September 1982 (verified May 1985)

Photo 72 of 73



i02 Washington (element 139), looking
northwesterly, the southerly facade and
easterly side elevation
Central Commercial and Railroad Historic
District *MRA*

Greenwood, Leflore County, Mississippi
Mississippi Department of Archives & History
Mary Ellen Bowen
September 1982 (verified May 1985)
Photo 73 of 73