



NAAMAN'S CREEK SCHOOL (N-1227)

CLAYMONT, DELAWARE

PHOTOGRAPHER: VALERIE CESNA

DECEMBER 1989

LOCATION OF NEGATIVE: DELAWARE

BUREAU OF ARCHAEOLOGY AND

HISTORIC PRESERVATION,

15 THE GREEN, DOVER,

DELAWARE 19901

CAMERA FACING NORTH



Harvard College Library (1872)

Library of the

Harvard College

Library

Location of the

Library of the

Harvard College

Library

Harvard College

Harvard College Library

2009

Norm C
Schoolhouse
Founded
1805.

Human Cell Strains (at 1977)

Genetic Diseases

Microbiology: Bacteriology

Year 1980

Location of Diseases: The 1983

Genetics of Inheritance of and

Genetic Diseases

Genetic Diseases

Year 1983

Genetics of Inheritance of and

Genetic Diseases

Year 1984



DISTRICT SCHOOL

No. 1.

REMODELED AND

BUILT

1905

FREE

DE

PHYS

F N:

OF

C T



NEWMAN'S CREEK SCHOOL (N-1227)

CLAYMONT, DELAWARE

PHOTOGRAPHER: VALERIE LESNA

DECEMBER 1989

LOCATION OF NEGATIVE: DELAWARE

BUREAU OF ARCHAEOLOGY AND

HISTORIC PRESERVATION,

15 THE GREEN, DOVER,

DELAWARE 19901

CAMERA FACING WEST



NOAMAN'S CREEK

CLAYMONT, DELA.

PHOTOGRAPHER:

JUNE 1989

LOCATION OF NE

BUREAU OF
HISTORIC PRES.

IS THE GARE

DELAWARE 1

REAR; CAMERA F



NALMAN'S CREEK SCHOOL (N-1227)

CLAYMONT, DELAWARE

PHOTOGRAPHER: VALERIE CESNA

JUNE 1989

LOCATION OF NEGATIVE: DELAWARE

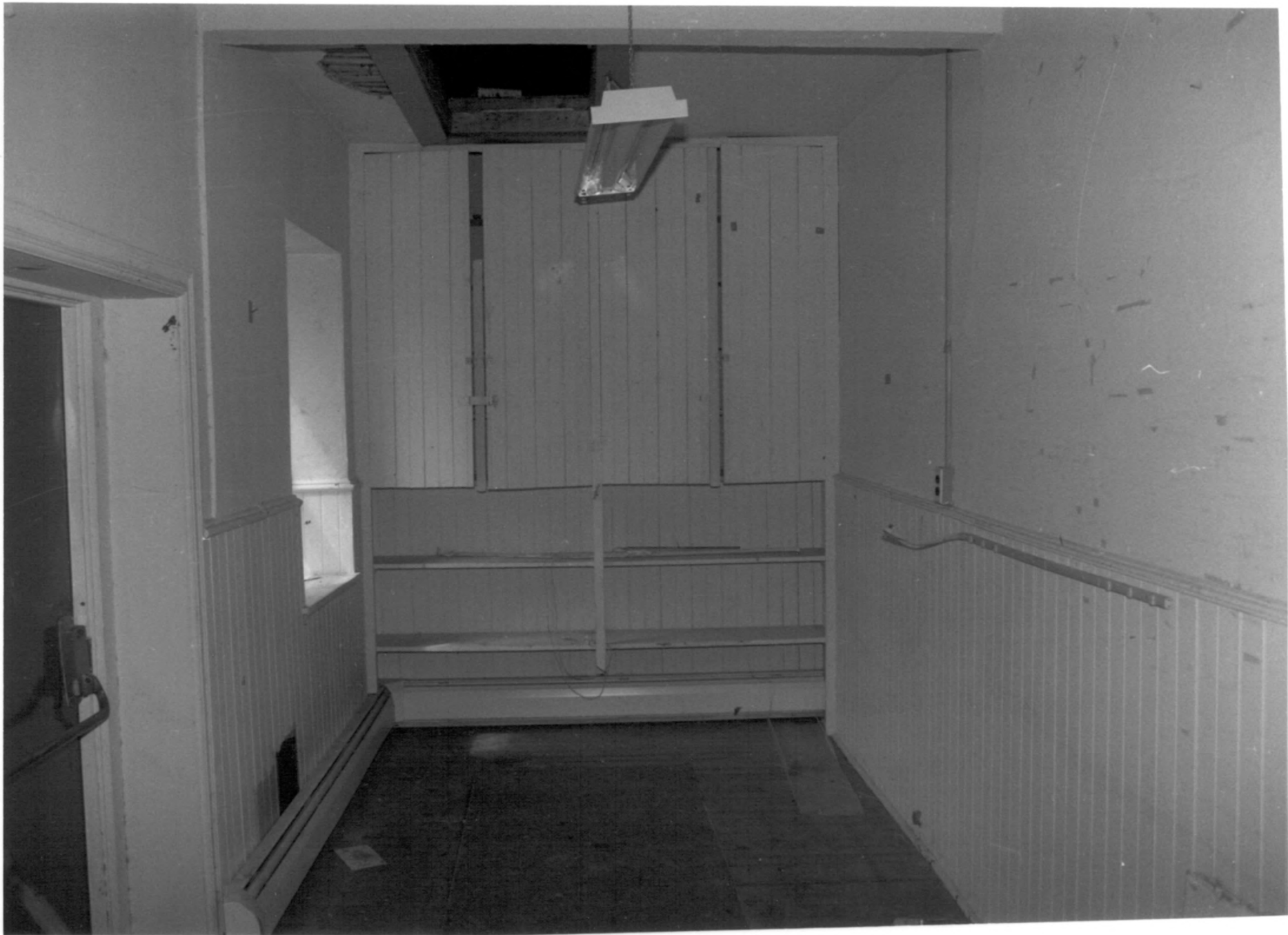
BUREAU OF ARCHAEOLOGY AND
HISTORIC PRESERVATION,

15 THE GREEN, DOVER,

DELAWARE 19901

INTERIOR DOOR IN ORIGINAL WINDOW;
PARTITION WALL BETWEEN
CLASSROOM AND VESTIBULE

7 OF 9



NAAMAN'S CREEK SCHOOL (N-1227)

CLAYMONT, DELAWARE

PHOTOGRAPHER: VALERIE CISHA

JUNE 1989

LOCATION OF NEGATIVE: DELAWARE

BUREAU OF ARCHAEOLOGY AND
HISTORIC PRESERVATION,

15 THE GREEN, DOVER,

DELAWARE 19901

DOUBLE CLOSET IN VESTIBULE

