



Seventeen Mile House and Site

Arapahoe County, Colorado

Photographer: Arthur W. Wallace

Date of photograph: March 29, 1983

Location of negative: Cherry Creek Valley
Historical Society

Description of view: W NW view of house and
barn from the Parker
Highway (Highway 83)

Photograph No. 1



Seventeen Mile House and Site
Arapahoe County, Colorado

Photographer: Arthur W. Wallace
Date of photograph: March 29, 1983
Location of negative: Cherry Creek Valley
Historical Society
Description of view: NW view of house and
barn

Photograph No. 2



Seventeen Mile House and Site

Arapahoe County, Colorado

Photographer: Ron Shaller

Date of Photograph: May, 1983

Location of Negative: Cherry Creek Valley
Historical Society

Description of View: W NW view of front
of house

Photograph No. 3



Seventeen Mile House and Site
Arapahoe County, Colorado

Photographer: Arthur W. Wallace
Date of photograph: March 29, 1983
Location of negative: Cherry Creek Valley
Historical Society
Description of view: View of SE side of
house

Photograph No. 4



Seventeen Mile House and Site
Arapahoe County, Colorado

Photographer: Arthur W. Wallace
Date of photograph: March 29, 1983
Location of negative: Cherry Creek Valley
Historical Society
Description of view: View of back (SW
side) of house

Photograph No. 5



Seventeen Mile House and Site
Arapahoe County, Colorado

Photographer: Arthur W. Wallace
Date of photograph: March 29, 1983
Location of negative: Cherry Creek Valley
Historical Society
Description of view: View of NW side of
house

Photograph No. 6



Seventeen Mile House and Site

Arapahoe County, Colorado

Photographer: Arthur W. Wallace

Date of photograph: March 29, 1983

Location of negative: Cherry Creek Valley
Historical Society

Description of view: View of front (SW
side) of barn

Photograph No. 7



Seventeen Mile House and Site

Arapahoe County, Colorado

Photographer: Arthur W. Wallace

Date of photograph: March 29, 1983

Location of negative: Cherry Creek Valley

Historical Society

Description of view: View of SE side of
barn

Photograph No. 8



Seventeen Mile House and Site

Arapahoe County, Colorado

Photographer: Ron Shaller

Date of Photograph: May, 1983

Location of Negative: Cherry Creek Valley
Historical Society

Description of View: NE (back) side of barn

Photograph No. 9



Seventeen Mile House and Site

Arapahoe County, Colorado

Photographer: Arthur W. Wallace

Date of photograph: March 29, 1983

Location of negative: Cherry Creek Valley

Historical Society

Description of view: Interior joint construction of the barn showing wooden pegs

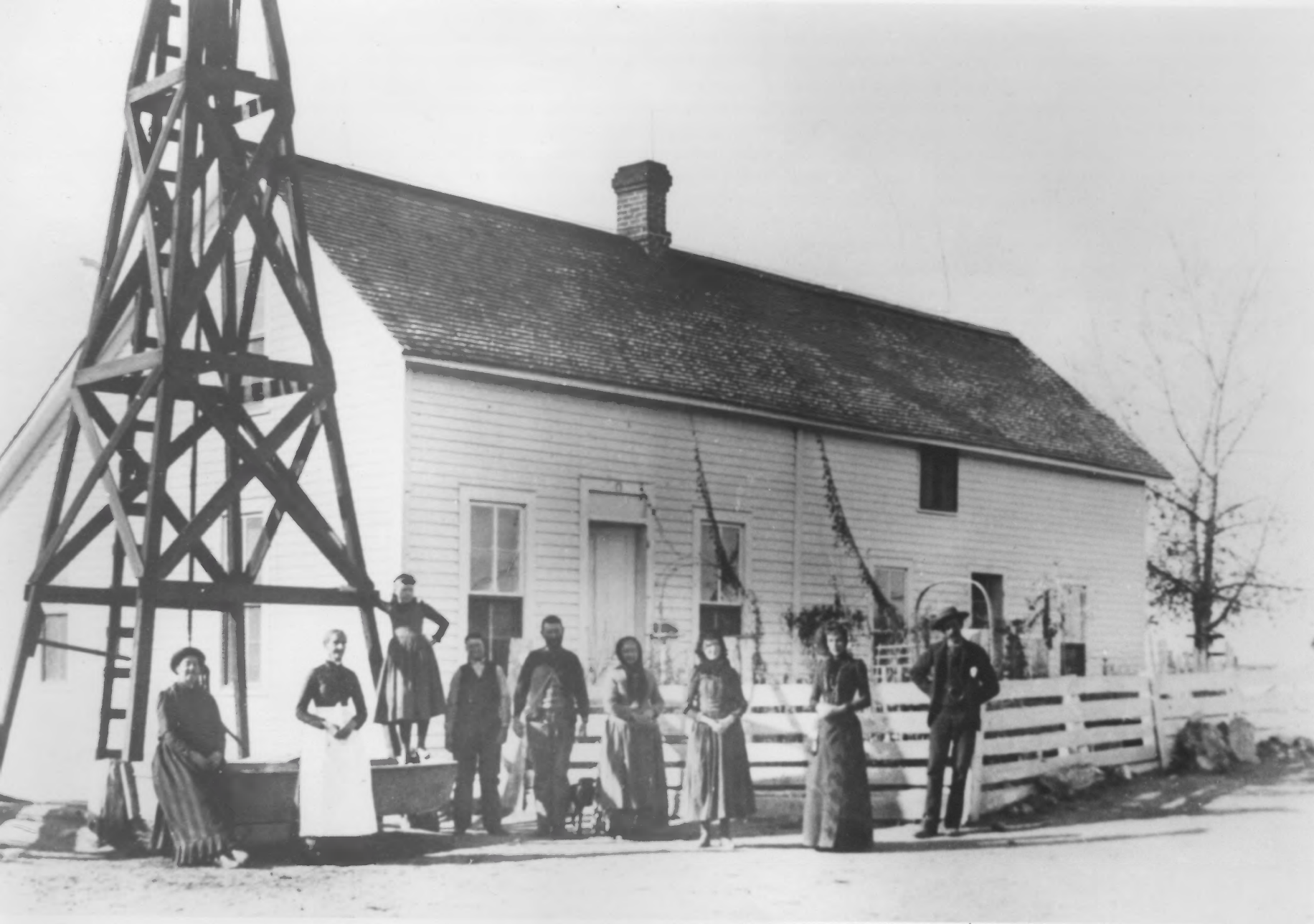
Photograph No. 10



Seventeen Mile House and Site
Arapahoe County, Colorado

Photographer: Unknown
Date of photograph: Ca. 1875
Location of negative: Original photograph
in Colorado Historical Society
Description of view: Front view of house,
showing members of
Doud family

Photograph No. 11



Seventeen Mile House and Site

Arapahoe County, Colorado

Photographer: Unknown

Date of photograph: 1890

Location of negative: Original photograph
in Colorado Historical
Society

Description of view: Front view of house

Photograph No. 12