



STOCKTON
SCHOOL
1872

034/019

District 98 School

1 of 12



034/019

District No. 98 School

2 of 12



034/019

District No. 98 School

392



034/019 District No. 98 School 4 of 12



034/019

District No. 98 School

5812



Aa Bb Cc Dd Ee Ff Gg Hh Ii Jj Kk Ll Mm Nn Oo Pp Qq Rr Ss Tt Uu Vv Ww Xx Yy Zz

Days of the Week
Sunday
Monday
Tuesday
Wednesday
Thursday
Friday
Saturday

01234567890
A B C D E F G H I J K L M N O P Q R S T U V W X Y Z

EXIT

m s i e n

034/019 District No. 98 School 6 * of 12



Miss Losch's

1st Grade

OUR WORD WALL

What's new

Aa	Bb	Cc
Dd	Ee	Ff
Gg	Hh	Ii
Jj	Kk	Ll
Mm	Nn	Oo
Pp	Qq	Rr
Ss	Tt	Vv
Uu	Vv	Ww

034/019 District No. 98 Sch 001 7 of 12



034 / 019

District No. 98 School

~~7~~ of 12



Interpret



EXIT

EXIT

EXIT

034/019

District No. 98

School

9 of 12



034/019 District No. 98 School No. of 12



034/019

District No. 98 School

11 of 12



034/019

District No. 98 School

12 of 12



SCHOOL HOUSE STOCKTON, N. J.

Handwritten text in a cursive script, possibly a signature or a name, written in black ink on a white background. The text is oriented vertically and appears to be a single line of writing.



Handwritten text in a cursive script, possibly a signature or a name, written in black ink on a white background. The text is highly stylized and difficult to decipher, but appears to be a single line of writing.



17
18
19
20
21
22
23
24
25
26
27
28
29
30
31
32
33
34
35
36
37
38
39
40
41
42
43
44
45
46
47
48
49
50
51
52
53
54
55
56
57
58
59
60
61
62
63
64
65
66
67
68
69
70
71
72
73
74
75
76
77
78
79
80
81
82
83
84
85
86
87
88
89
90
91
92
93
94
95
96
97
98
99
100



1875

1876

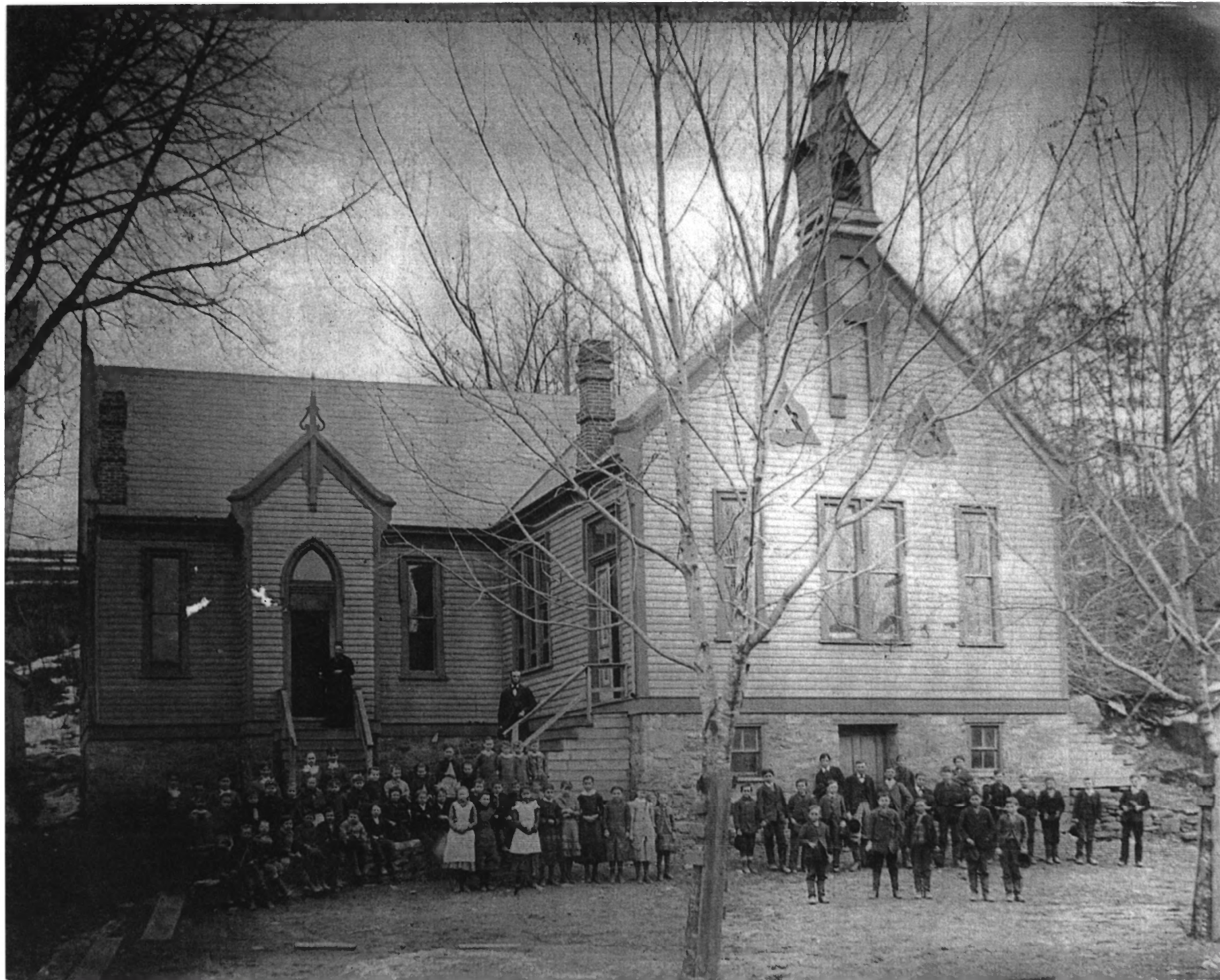
1877



Handwritten text in a cursive script, possibly a signature or a name, written in black ink on a white background. The text is oriented vertically and appears to be a single line of writing.



Handwritten text in a cursive script, possibly a signature or a name, consisting of several connected characters.



Handwritten text in a cursive script, possibly a signature or a name, written in black ink on a white background. The text is highly stylized and difficult to decipher, but appears to be a single line of writing.



Handwritten text, possibly a signature or name, written in cursive script. The text is difficult to decipher but appears to be a single line of writing.