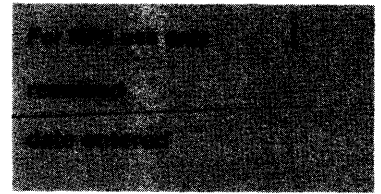


United States Department of the Interior
National Park Service

National Register of Historic Places
Inventory—Nomination Form



Continuation sheet

Item number

Page 1

✓ Walker House (4) (SHATR)

✓ Location: 1801 N. Broadway, Shawnee, OK, ~~Congressional district 004.~~

Owner of Property: Ruth J. Walker, 1801 N Broadway, Shawnee, OK.

Location of Legal Description: Pottawatomie County Court House, 300 N. Broadway, Shawnee, OK.

Description: Excellent, unaltered, original site.

The Walker House, built in 1898, is a good example of Queen Ann style of architecture. The Walker House is approximately 50' by 60'. The house has 2 1/2 stories, with a 2 1/2 conical-roofed tower. The tower is covered with fish scale and diamond shingles, and has triple windows on all three floors. The eaves of the first and second floors, and the tower, are decorated with carved brackets. Except for the tower, the house was built with clapboard siding. The top floor has a number of gables, with both arched and square windows. The second floor has single sash windows on all sides. The first floor has three porches: one covering the front of the house, a small side porch, and one covering the back of the house. The front porch, on the west side of the house, has tuscan columns and an open rail. The side porch, on the south side of the house, also has tuscan columns and an open railing. The doors on the side porch are panel doors with oval glass windows. The screen doors are decorated to match the open rail on the porch. There are transomes over the doors. The first floor also has a bay window on the south side. The bay window has three single sash windows. The house has a row of sash windows on the west side of the first floor. The back porch, on the east side of the house, has been enclosed with screen. However, this does not detract from the integrity of the house. The owner of the Walker House is now in the process of restoring the home, both interior and exterior.

Significance: 1898 to present; Builder/Architect - Charles Kirst; architecture, politics/government.

The Walker House, built in 1898, architecturally significant, and it is significant because of political activities that took place in the house. The house is architecturally significant because it is an excellent example of Queen Ann style architecture in Oklahoma. It is also a good example of a pre-statehood home. The house was built by Charles Kirst in 1898. When Kirst's daughter married Dr. Walker, Kirst gave them the house as a wedding present. From that time, the Walkers have lived in the house.

The Walker House is also significant because of political activities that have taken place there. In 1910, Governor Haskell proposed to the state legislature that a city be chosen to serve as the permanent location for the state capital. The Ledbetter Bill was passed stating that any town obtaining 50,000 signatures on a petition could be put on the ballot as a possible site for the capital. A public election would be held to make the final decision. Oklahoma City, Guthrie, and Shawnee were the only three towns able to be put on the ballot. A delegation of Republicans met in the Walker House to attempt to organize their efforts to obtain the state capital for Shawnee. It is said that the Walker House was chosen as the meeting place for three reasons: Dr. Walker was a very prominent Shawnee citizen; the house was large and would accommodate a large number of people; and Dr. Walker was an active worker in the Republican party. Shawnee, however, lost in the popular election for the location of the state capital.

**United States Department of the Interior
National Park Service**

**National Register of Historic Places
Inventory—Nomination Form**



Continuation sheet

Item number

Page 2

Bibliographical References:

Minnie Ruth Walker Interview. Shawnee, OK June 2, 1981.

Goins, Charles R. and Morris, John W. Oklahoma Homes Past and Present. Norman:
University of Oklahoma Press, 1980.

Verbal Boundary Description: N. 60' of Lot 2, Block 5, A.P. of Collegeview Addition.

UTM: Zone: 14

Easting: 688750

Northing: 6913760

Acreage: Under one acre