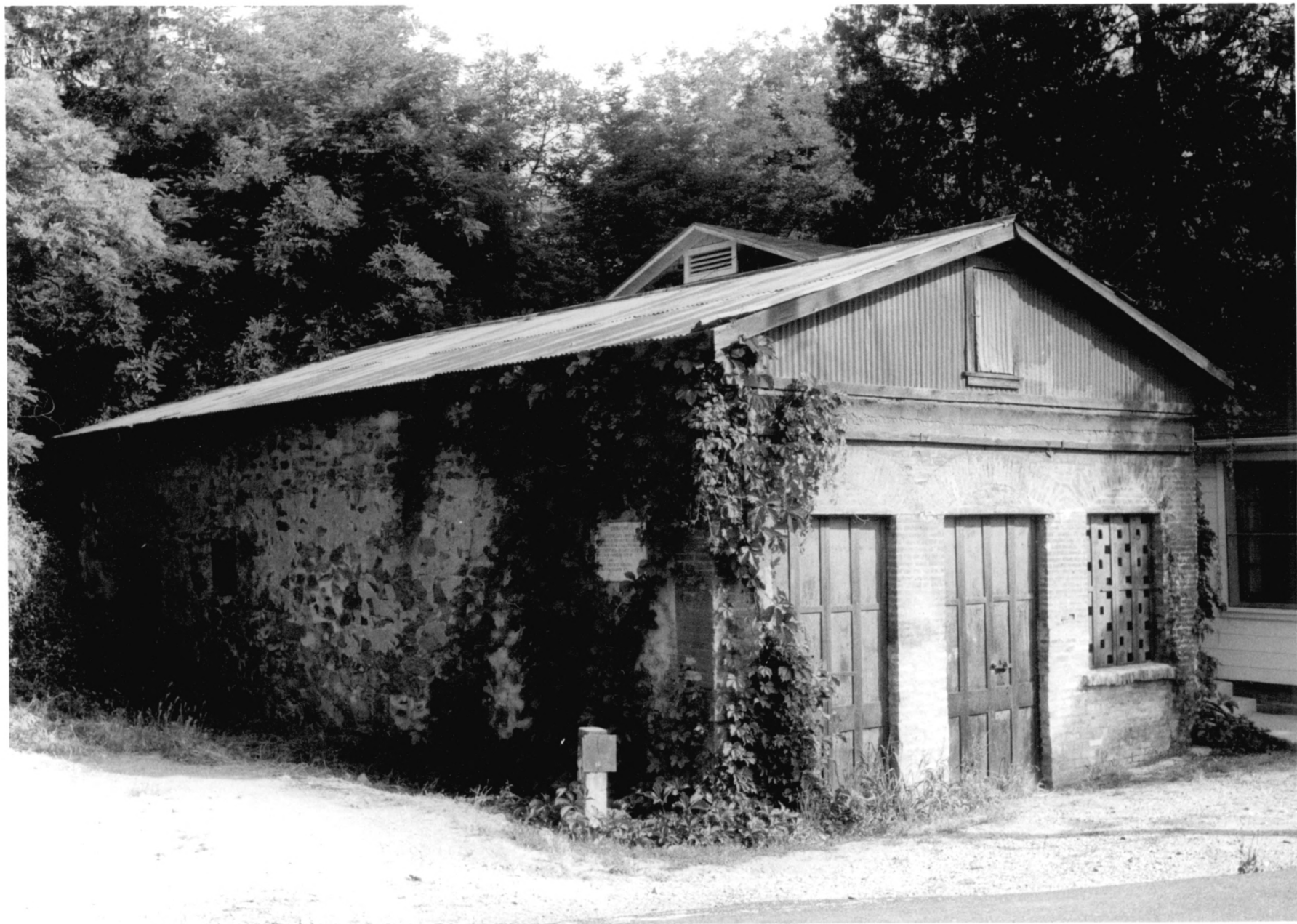


Sam Choy Store
Bird Way
Angels Camp, CA

view from south front

Paul Moeller, photographer, 1984

one of four

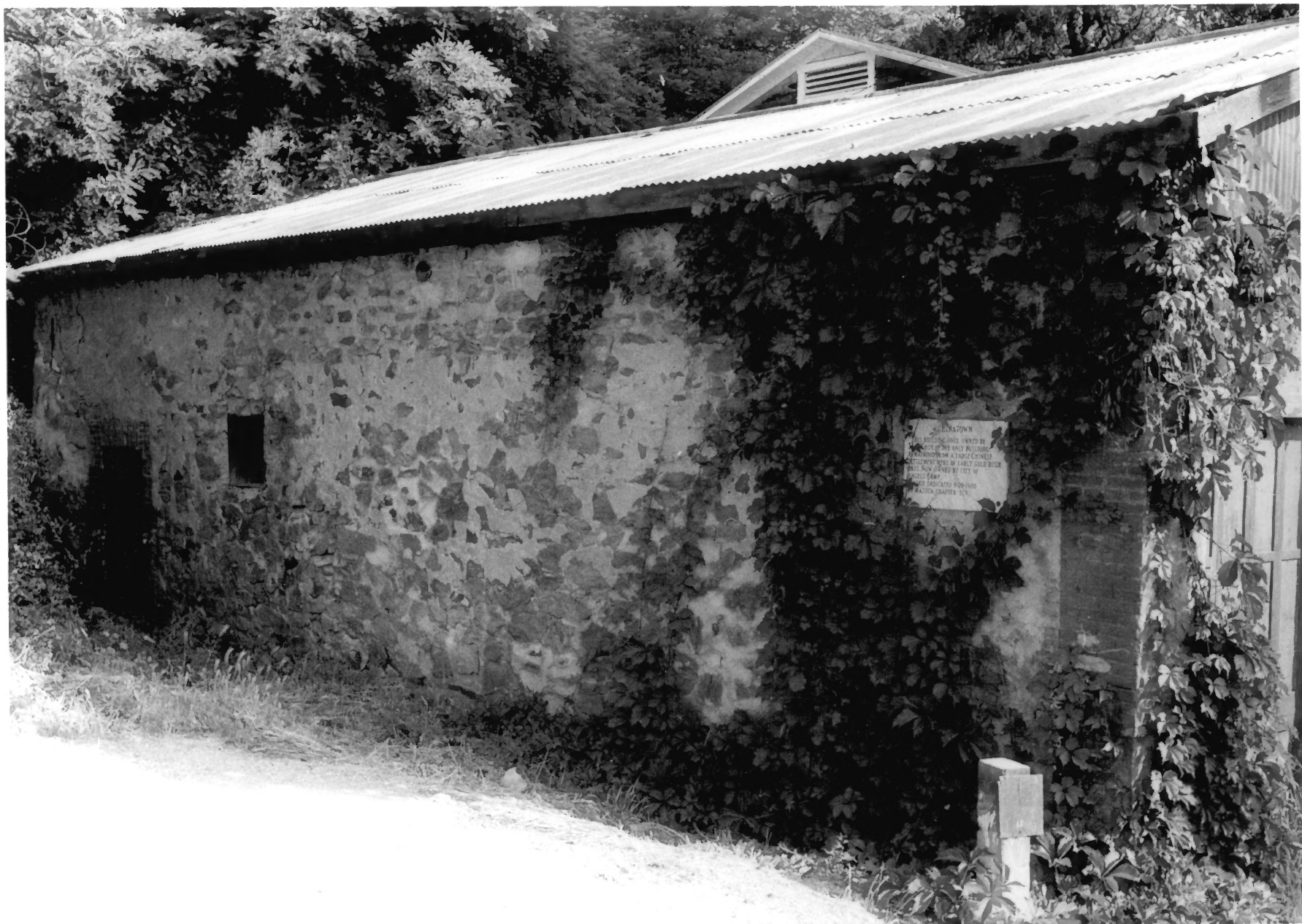


Sam Choy Store
Bird Way
Angels Camp, CA

view of front and west wall

Paul Moeller, photographer, 1984

two of four



Sam Choy Store
Bird Way
Angels Camp, CA

view of west side

Paul Moeller, photographer, 1984

three of four

CHINATOWN

THIS BUILDING, ONCE OWNED BY
SAM CHOY, IS THE ONLY BUILDING
REMAINING FROM A LARGE CHINESE
SETTLEMENT HERE IN EARLY GOLD RUSH
DAYS. NOW OWNED BY CITY OF
ANGELS CAMP.

PLAQUE DEDICATED 9-20-1980
BY MATUCA CHAPTER ECV.

Sam Choy Store
Bird Way
Angels Camp, CA

view of E. Clampus Vitus Marble plaque on west wall

Paul Moeller, photographer, 1984

four of four