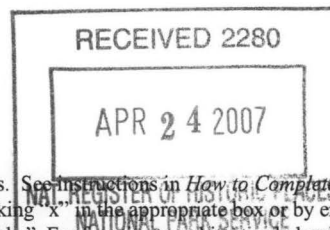


503

United States Department of the Interior
National Park Service

National Register of Historic Places
Registration Form



This form is for use in nominating or requesting determinations for individual properties and districts. See instructions in *How to Complete the National Register of Historic Places Registration Form* (National Register Bulletin 16A). Complete each item by marking "x" in the appropriate box or by entering the information requested. If an item does not apply to the property being documented, enter "N/A" for "not applicable." For functions, architectural classification, materials, and areas of significance, enter only categories and subcategories from the instructions. Place additional entries and narrative items on continuation sheets (NPS Form 10-900a). Use a typewriter, word processor, or computer, to complete all items.

1. Name of Property

historic name Castleberry-Harrington Historic District

other names/site number FA1319, FA1320, FA1289

2. Location

street & number Castleberry Road

☐ not for publication

city or town Republican

☐ vicinity

state AR code AR county Faulkner code 045 zip code 72058

3. State/Federal Agency Certification

As the designated authority under the National Historic Preservation Act, as amended, I hereby certify that this ☒ nomination ☐
request for determination of eligibility meets the documentation standards for registering properties in the National Register of Historic
Places and meets the procedural and professional requirements set for in 36 CFR Part 60. In my opinion, the property ☒ meets ☐
does not meet the National Register criteria. I recommend that this property be considered significant
☐ nationally ☐ statewide ☒ locally. (See continuation sheet for additional comments.)

Cathie Matthews
Signature of certifying official/Title

4/11/07
Date

State or Federal agency and bureau

In my opinion, the property ☐ meets ☐ does not meet the National Register criteria. (☐ See Continuation sheet for additional comments.)

Signature of certifying official/Title

Date

State or Federal agency and bureau

4. National Park Service Certification

I hereby certify that the property is:

☒ entered in the National Register.

☐ See continuation sheet

☐ determined eligible for the
National Register.

☐ See continuation sheet

☐ determined not eligible for the
National Register.

☐ removed from the National
Register.

☐ other, (explain:) _____

For
Edson V. Beall
Signature of the Keeper

6.5.07
Date of Action

5. Classification**Ownership of Property**

(Check as many boxes as apply)

- ☒ private
☐ public-local
☐ public-State
☐ public-Federal

Category of Property

(Check only one box)

- ☐ building(s)
☒ district
☐ site
☐ structure
☐ object

Number of Resources within Property

(Do not include previously listed resources in count.)

Contributing

Noncontributing

3

buildings

sites

structures

objects

3

Total

Name of related multiple property listing

(Enter "N/A" if property is not part of a multiple property listing.)

A Storm Couldn't Tear Them Down: The Mixed Masonry
Buildings of Silas Owens, Sr., 1938-1955

**Number of Contributing resources previously listed
in the National Register****6. Function or Use****Historic Functions**

(Enter categories from instructions)

DOMESTIC/Single dwelling

DOMESTIC/Single dwelling

Current Functions

(Enter categories from instructions)

DOMESTIC/Single dwelling

VACANT/Not in use

7. Description**Architectural Classification**

(Enter categories from instructions)

OTHER./vernacular, Mixed Masonry

Materials

(Enter categories from instructions)

foundation Concrete

walls Cut stone

roof Asbestos

other

Narrative Description

(Describe the historic and current condition of the property on one or more continuation sheets.)

Castleberry-Harrington Historic
District
Name of Property

Faulkner County, AR
County and State

United States Department of the Interior
National Park Service

National Register of Historic Places Continuation Sheet

Section number 7 Page 1

SUMMARY

The Castleberry-Harrington Historic District in Republican is a collection of three contributing Mixed-Masonry houses, all rocked by Silas Owens, Sr. The buildings on Castleberry Road were commissioned by and constructed for the Castleberry and Harrington families and all but one currently used for storage are inhabited by relatives of the original builders. The construction period encompassed within the district range from 1946 to 1950. The homes are situated on the north and south of Castleberry Road and are surrounded by fields on the east and west. There are farm industry buildings on the road to the west of the district but they are not within the boundaries.

ELABORATION

The Loyd and Willie Castleberry Cottage is a typical rectangular, gable-roofed Post World War II cottage. Original double-hung, four-over-four windows of wood were replaced in 2002; however, the new windows fit within the 1950 openings and the Mixed-Masonry trim integral to the style are intact. The only disruption in the historic form of the cottage is the placement of double-leaf doors within a window opening; however, the trim is intact and the opening is increased in height only.

Western Elevation

The front, western elevation of the cottage features a single-leaf paneled door with one-light window sheltered by a cantilevered gable overhang trimmed with picket-fence detail

Castleberry-Harrington Historic
District

Name of Property

Faulkner County, AR

County and State

United States Department of the Interior
National Park Service

National Register of Historic Places Continuation Sheet

Section number 7 Page 2

on the pediment. Fenestration consists of a two-over-two, double-hung aluminum window adjacent to the door and a second window at the southwest corner.

Southern Elevation

The southern end of the cottage is fenestrated by two pairs of windows at the southwest and southeast corners.

Eastern Elevation

The rear, eastern elevation features a single-leaf paneled door with three-light Craftsman sash window at the southeast end of the cottage and a small one-over-one window within the full-size opening at the northeast corner.

Northern Elevation

The northern elevation of the cottage is fenestrated by a single window at the northwest corner and a double-leaf door of corrugated tin at the northeast corner.

Castleberry-Harrington Historic
District

Name of Property

Faulkner County, AR

County and State

United States Department of the Interior
National Park Service

National Register of Historic Places Continuation Sheet

Section number 7 Page 3

HINKLE AND ERMON CASTLEBERRY HOUSE ELABORATION

The Hinkle and Ermon Castleberry House is situated to the north of the Loyd and Willie Castleberry Cottage. More elaborate in scale and architectural detail, the gable-roofed Mixed-Masonry with arcaded wrap-around porch and irregular footprint displays a Craftsman form with Mediterranean influence.

Western Elevation

The front, western façade of the house features an expansive gable-roofed front porch with four arches lined in cream brick. The main wall under the porch is fenestrated by a single-leaf paneled door with three-light window centered between two one-over-one, double-hung windows. A third window lights the southwest corner. A small gable-roofed side porch extends south approximately ten feet from the front wall. The western elevation of the porch contains a single arch in filled with vertical siding and a small one-over-one vinyl window.

South Elevation

The south elevation is fenestrated by a single window at the southwest corner. The in filled porch was originally accessed by two small arches, which are now in filled with vertical siding. The western elevation contains a small window and the eastern arch contains a nine-light single-leaf paneled door beneath a small gable roof supported by

Castleberry-Harrington Historic
District
Name of Property

Faulkner County, AR
County and State

United States Department of the Interior
National Park Service

National Register of Historic Places Continuation Sheet

Section number 7 Page 4

two wooden posts. Two single windows fenestrate the southeast corner of the home. The southern wall of a small porch on the rear of the house features a narrow in filled arch.

Eastern Elevation

The rear eastern elevation of the side porch displays a single in filled arch. The main wall of the home is fenestrated at the southeast corner by a pair of windows. A small gable- roofed porch extends approximately ten feet from the eastern wall of the house. Two arches have been in filled; the southern arch containing a single-leaf eight-light paneled door beneath a gable-roofed shelter supported by two wood posts and the northern in filled arch lit by a small sliding window.

Northern Elevation

The northern arch of the rear porch is in filled and contains a sliding window. Fenestration from east to west consists of two single windows and a pair of windows beneath the porch roof at the northwest corner. The wraparound porch on this elevation displays three arches. An interior mixed-masonry chimney is visible from this elevation.

United States Department of the Interior
National Park Service

National Register of Historic Places Continuation Sheet

Section number 7 Page 5

WILBUR AND MARY HARRINGTON HOUSE

ELABORATION

The Wilbur and Mary Harrington House was constructed across Castleberry Road to the west of the Hinkle and Ermon Castleberry House. Except for the addition of a brick carport to the side of the home and the replacement of six-over-six double-hung windows with one-over-one windows, it retains its original Craftsman plan and the rockwork of Silas Owens, Sr., is primarily visible.

Eastern Elevation

The front, eastern elevation is fenestrated at the southeast corner by a pair of double-hung one-over-one windows. The main wall is recessed under a gable-roofed half-porch. The front door is adjacent to a second pair of windows. The porch features two arches and a round starburst pattern of cream brick in the apex of the pediment. A double-width carport is affixed to the north wall of the home.

Northern Elevation

The main wall of the house beneath the gable-roofed carport features an exterior chimney with rounded shoulders flanked by two windows. The north wall of the carport is composed of buff brick and is fenestrated by a small two-light sliding window. The gable of the carport is sheathed in vinyl siding. The northeast corner of the main wall of the house is lit by a pair of windows.

Castleberry-Harrington Historic
District

Name of Property

Faulkner County, AR

County and State

United States Department of the Interior
National Park Service

National Register of Historic Places Continuation Sheet

Section number 7 Page 6

Western Elevation

The rear wall of the carport contains a single-leaf aluminum and glass storm door. The western elevation of the house is lit north to south by three evenly spaced windows.

Southern Elevation

A gabled extension of the southern elevation is fenestrated at the southwest corner by a pair of windows. The southeast corner of the extension features a small arched porch sheltering a single-leaf door. The western wall of the porch features a second narrow arch. Two windows fenestrate the remainder of the southern wall.

8. Statement of Significance**Applicable National Register Criteria**

(Mark "x" in one or more boxes for the criteria qualifying the property for National Register listing.)

☐ **A** Property is associated with events that have made a significant contribution to the broad patterns of our history.

☐ **B** Property is associated with the lives of persons significant in our past.

☒ **C** Property embodies the distinctive characteristics of a type, period, or method of construction or represents the work of a master, or possesses high artistic values, or represents a significant and distinguishable entity whose components lack individual distinction.

☐ **D** Property has yielded, or is likely to yield, information important in prehistory or history.

Criteria Considerations

(Mark "x" in all the boxes that apply.)

Property is:

☐ **A** owned by a religious institution or used for religious purposes.

☐ **B** removed from its original location.

☐ **C** moved from its original location.

☐ **D** a cemetery.

☐ **E** a reconstructed building, object, or structure.

☐ **F** a commemorative property

☐ **G** less than 50 years of age or achieved significance within the past 50 years.

Levels of Significance (local, state, national)

Local

Areas of Significance (Enter categories from instructions)

ARCHITECTURE

Period of Significance

C. 1946-1950

Significant Dates

C. 1946-1950

Significant Person (Complete if Criterion B is marked)**Cultural Affiliation** (Complete if Criterion D is marked)**Architect/Builder**

Silas Owens, Sr.

Narrative Statement of Significance

(Explain the significance of the property on one or more continuation sheets.)

9. Major Bibliographical References**Bibliography**

(Cite the books, articles, and other sources used in preparing this form on one or more continuation sheets.)

Previous documentation on file (NPS):

☐ preliminary determination of individual listing (36 CFR 67) has been requested

☐ previously listed in the National Register

☐ Previously determined eligible by the National Register

☐ designated a National Historic Landmark

☐ recorded by Historic American Buildings Survey
#

☐ recorded by Historic American Engineering

Primary location of additional data:

☒ State Historic Preservation Office

☐ Other State Agency

☐ Federal Agency

☐ Local Government

☐ University

☐ Other

Name of repository:

Castleberry-Harrington Historic
District

Name of Property

Faulkner County, AR

County and State

United States Department of the Interior
National Park Service

National Register of Historic Places Continuation Sheet

Section number 8 Page 1

SUMMARY

The Castleberry-Harrington Historic District in the Republican vicinity is being nominated to the National Register under Criterion C with local significance as a good ensemble of rural Mixed-Masonry residences veneered by Silas Owens, Sr. The three residential buildings within the district are all contributing as examples of Owens' exemplary craftsmanship as a rock mason. The nomination is being submitted under the multiple property context, "A Storm Couldn't Tear Them Down: The Mixed Masonry Buildings of Silas Owens, Sr., 1938-1955."

HINKLE AND ERMON CASTLEBERRY HOUSE

ELABORATION

The Hinkle and Ermon Castleberry House was the first building to be constructed in the district. This home displays the most elaborate and expansive floor plan within the boundaries and features three arcaded porches. The spacious arcaded wraparound porch on the front façade affords an impressive view of the valley to the north of the home and presents a graceful character to the house. Hinkle hired Silas Owens, Sr., to apply the rockwork to his home because he knew Owens' work would be top quality. He was also acquainted with Silas as he lived close to the area of Republican and he had a great

United States Department of the Interior
National Park Service

National Register of Historic Places

Continuation Sheet

Section number 8 Page 2

respect for his work and for Owens personally. The home was a collaborative effort between Owens and Albert Palmer, a Faulkner County resident who provided the stone for the building from his property. Hinkle Castleberry was from Republican and his wife Ermon, formerly Sawrie, grew up nearby in Shady Grove. The couple was involved in farming and raised and traded cattle and operated an egg distribution service.

Hinkle and Ermon lived in the house on Castleberry Road until their deaths; Ermon in 1971 and Hinkle in 1975. In 1976 their grandson, Marvin Harrington, moved into the house with his wife Judy and their two children. Marvin spent the bulk of his life in the Republican area and worked for the Arkansas State Plant Board until his retirement in 2005. Judy is also retired and the couple still occupies Marvin's grandfather's home.

WILBUR AND MARY HARRINGTON HOUSE

ELABORATION

The Wilbur and Mary Harrington House was constructed in the Mixed-Masonry style in 1949. This building is situated across Castleberry Road to the north of the Hinkle and Ermon Castleberry House. Smaller in scale, the home features the tidy herringbone pattern that Owens was famous for. The rock was supplied from the Faulkner County area but it is not known if it came from the property or from a local quarry. In contrast to the Hinkle and Ermon Castleberry House the sandstone used on the Harrington House is light in color and appears to have come from an underground source, while the house

United States Department of the Interior
National Park Service

National Register of Historic Places Continuation Sheet

Section number 8 Page 3

across the street is darker and rippled, which usually indicates that the stone is from a surface water source such as a creekbed. The central core of the home is intact despite the circa 1970s addition of a carport to the north side constructed by Silas Owens, Jr. The addition features a solid wall of cream brick on the north and rear west but the front, western entry is open providing a view of the original northern elevation and the exterior chimney. Original six-over-six, double-hung windows were replaced in 1996 with one-over-one windows that fit within the 1949 openings.

The half-front porch features graceful arcades as does a small side porch, a rare element for Mixed-Masonries. Paired windows and the gabled porch give the home its Craftsman style and the porch arcades lend it a Mediterranean influence.

Wilbur Harrington, from Republican worked with his wife Mary Castleberry-Harrington in the Castleberry family egg distribution business. Mary was the daughter of Hinkle and Ermon Castleberry and she had lived in their home until she moved across the road. Marvin Harrington grew up in the new house with his mother except for a period of two years when he went away to school. Wilbur passed away in 1995 and Mary continues to reside in the home with her son and daughter-in-law close by.

United States Department of the Interior
National Park Service

National Register of Historic Places Continuation Sheet

Section number 8 Page 4

LOYD AND WILLIE CASTLEBERRY COTTAGE

ELABORATION

The Loyd and Willie Castleberry Cottage was constructed as a small residence for the Faulkner County couple circa 1950. The architecture of this two-room cottage is a standard post-World War II form with no stylistic frills. The rockwork of Silas Owens, Sr., enlivens this simple building.

Loyd and Willie, formerly Willie Reno, moved to Greenbrier from Pontotoc, Mississippi, where Loyd established a blacksmith shop. At the time that the Cottage was constructed Loyd and Willie relocated to the new house, transferred his shop to the area of Republican and took up farming work. Loyd and Willie only lived there for three years after which they moved to a new home north of Republican. Willie died in 1959 and Loyd in 1965.

Hinkle Castleberry engaged Silas Owens, Sr., to apply the stone veneer of the Cottage using sandstone from the Faulkner County property of Albert Palmer, who teamed up many times with Owens providing carpentry services. When his parents moved out he converted the building into storage space. Marvin and Judy Harrington's son lived in the cottage for a short period and when he moved out it was converted back to storage space.

United States Department of the Interior
National Park Service

National Register of Historic Places Continuation Sheet

Section number 8 Page 5

STATEMENT OF SIGNIFICANCE

The Castleberry-Harrington Historic District in Republican, Faulkner County is being nominated to the National Register under Criterion C with local significance. It is also being nominated under the multiple property context, "A Storm Couldn't Tear Them Down: The Mixed Masonry Buildings of Silas Owens, Sr., 1938-1955."

Originally called Cash Springs for the existence of two springs that provided drinking water for early residents, the name was changed in the late 1890s in homage to the existing national Republican administration. The area boasted a general store, saw mill and cotton gin that respectively closed in 1950 and the mid-1920s. Other businesses were a blacksmith shop and grist mill. Currently Republican is a small farming community marked by dirt roads and fields of dairy cows. Close enough to Greenbrier to be considered one and the same it is a rural area with no extant commercial center.

The Castleberry-Harrington Historic District is symbolic of two aspects of historic Faulkner County; rural family farm concerns and the work of local rock mason Silas Owens, Sr. Individually each building has undergone alterations that would preclude them from being listed on the National Register as single examples of Owens' Mixed-Masonries but as a group they properly impart the story of the people who contributed to that area's history and character.

The alterations to each structure largely do not change the architectural makeup nor do they overwhelmingly obscure the work of Silas Owens, Sr. Faulkner County has historically been characterized by rural agriculture and with the modern exceptions of

Castleberry-Harrington Historic
District

Name of Property

Faulkner County, AR

County and State

United States Department of the Interior
National Park Service

National Register of Historic Places Continuation Sheet

Section number 8 Page 6

Conway and Greenbrier, which have grown in unfettered leaps and bounds within the last fifteen years, it can still be thought of that way.

The Castleberry-Harrington Historic District continues to evoke a rural feel with its low, natural stone buildings and surrounding of green fields. Descendants of the Castleberrys recognize the competent artistry of Silas Owens, Sr., and the unique architectural style of the Mixed-Masonry. They are also maintaining the agricultural land that was the lifeblood of their family and Republican. Each aspect factors into the family's link to Faulkner County and the formation of the community of Republican.

Castleberry-Harrington Historic District
Name of Property

Faulkner County, AR
County and State

10. Geographical Data

Acreage of Property 1.5 acres

UTM References

(Place additional UTM references on a continuation sheet.)

1 15 552145 3901828
Zone Easting Northing
2 _____

3 _____
Zone Easting Northing
4 _____
☐ See continuation sheet

Verbal Boundary Description

(Describe the boundaries of the property on a continuation sheet.)

From the southeast corner of the Cash Springs Road and Castleberry Road intersection, proceed southerly along the eastern side of Castleberry Road for 1610 feet to the point of beginning. From the point of beginning, proceed southeasterly perpendicular to Castleberry Road for 165 feet, thence proceed southwesterly parallel to Castleberry Road for 205 feet, northeasterly parallel to Castleberry Road for 205 feet, thence proceed southeasterly perpendicular to Castleberry Road for 145 feet to the point of beginning.

Boundary Justification

(Explain why the boundaries were selected on a continuation sheet.)

This boundary includes all of the property historically associated with this resource that retains its integrity.

11. Form Prepared By

name/title Holly Hope/ Special Projects Historian
organization Arkansas Historic Preservation Program date 04/05/07
street & number 1500 Tower Building, 323 Center Street telephone 501 324-9880
city or town Little Rock state AR zip code 72201

Additional Documentation

Submit the following items with the completed form:

Continuation Sheets

Maps

A USGS map (7.5 or 15 minute series) indicating the property's location

A Sketch map for historic districts and properties having large acreage or numerous resources.

Photographs

Representative black and white photographs of the property.

Additional items

(Check with the SHPO or FPO for any additional items.)

Property Owner

(Complete this item at the request of SHPO or FPO.)

name Marvin Harrington
street & number 318 Castleberry Road telephone 501-679-3953
city or town Greenbrier state AR zip code 72058

Paperwork Reduction Act Statement: This information is being collected for applications to the National Register of Historic Places to nominate properties for listing or determine eligibility for listing, to list properties, and to amend existing listing. Response to this request is required to obtain a benefit in accordance with the National Historic Preservation Act, as amended (16 U.S.C. 470 *et seq.*)

UNITED STATES DEPARTMENT OF THE INTERIOR
NATIONAL PARK SERVICE

NATIONAL REGISTER OF HISTORIC PLACES
EVALUATION/RETURN SHEET

REQUESTED ACTION: NOMINATION

PROPERTY Castleberry--Harrington Historic District
NAME:

MULTIPLE Mixed Masonry Buildings of Silas Owens, Sr. MPS
NAME:

STATE & COUNTY: ARKANSAS, Faulkner

DATE RECEIVED: 4/24/07 DATE OF PENDING LIST: 5/14/07
DATE OF 16TH DAY: 5/29/07 DATE OF 45TH DAY: 6/07/07
DATE OF WEEKLY LIST:

REFERENCE NUMBER: 07000503

REASONS FOR REVIEW:

APPEAL: N DATA PROBLEM: N LANDSCAPE: N LESS THAN 50 YEARS: N
OTHER: N PDIL: N PERIOD: N PROGRAM UNAPPROVED: N
REQUEST: N SAMPLE: N SLR DRAFT: N NATIONAL: N

COMMENT WAIVER: N

☒ ACCEPT ☐ RETURN ☐ REJECT 6-5-07 DATE

ABSTRACT/SUMMARY COMMENTS:

**Entered in the
National Register**

RECOM./CRITERIA _____

REVIEWER _____ DISCIPLINE _____

TELEPHONE _____ DATE _____

DOCUMENTATION see attached comments Y/N see attached SLR Y/N

If a nomination is returned to the nominating authority, the nomination is no longer under consideration by the NPS.



Castiberry - Hareington Historic District

Mary + Wilbur Hareington House

Faulkner Co, AL

Holly Hope

November 09, 2002

AHPP

View from South



Castleberry - Harrington Historic District
Wilbur + Mary Harrington House
Faulkner Co, Ar

Holly Hope
November 09, 2002
ON file at AHP
View from North



Castiberry - Harrington Historic District
Mary + Wilbur Harrington House

Faulkner Co, AR

Holly Hope

ON file at AHPP

View from west



Castleberry-Harrington Historic District
Mamie + Wilbur Harrington House
Faulkner Co, AR
Holly Hope

November 09, 2002

ON file at AHP

View from east



Castleberry-Hareington Historic District

Hinkle + Eamon Castleberry House

Faulkner Co, AR

Holly Hope

November 09, 2002

On file at AHP

View from South



Castleberry - Hareington Historic District
Hinkle + ERMON Castleberry House

Faulkner Co AR

Holly Hope

November 09, 2002

ON file at AHPP

View from west



Castleberry - Harrington Historic District
Hinkle + Simon Castleberry House
Faulkner Co, AR
Holly Hope

November 09, 2002
on file at AHP
View from east



Castleberry - HARRINGTON Historic District
Hinkle + ERMON Castleberry House

Faulkner Co, AR

Holly Hope

November 09, 2002

on file at AHP

View from North



Castleberry - Harrington Historic District
Hinkle + ERMON Castleberry House

Faulkner Co, AR
Holly Hope
ON file at AHP
View from west



Castleberry-Harrington Historic District
Lloyd + Willie Castleberry Cottage

Faulkner Co, AR

Holly Hope

November 09, 2002

AHPP

View from South



Castleberry - Hareington Historic District

Loyd + Willie Castleberry Cottage

Faulkner Co, AR

Holly Hope

November 09, 2002

AHPP

View from east



Castleberry - Hiram Historic District
Loyd + Willie Castleberry Cottage
Faulkner, AL
Holly Hope

November 09, 2002
on file at AHPP
view from North



Castleberry - Harrington Historic District
Loyd + Willie Castleberry Cottage
Faulkner, Ae

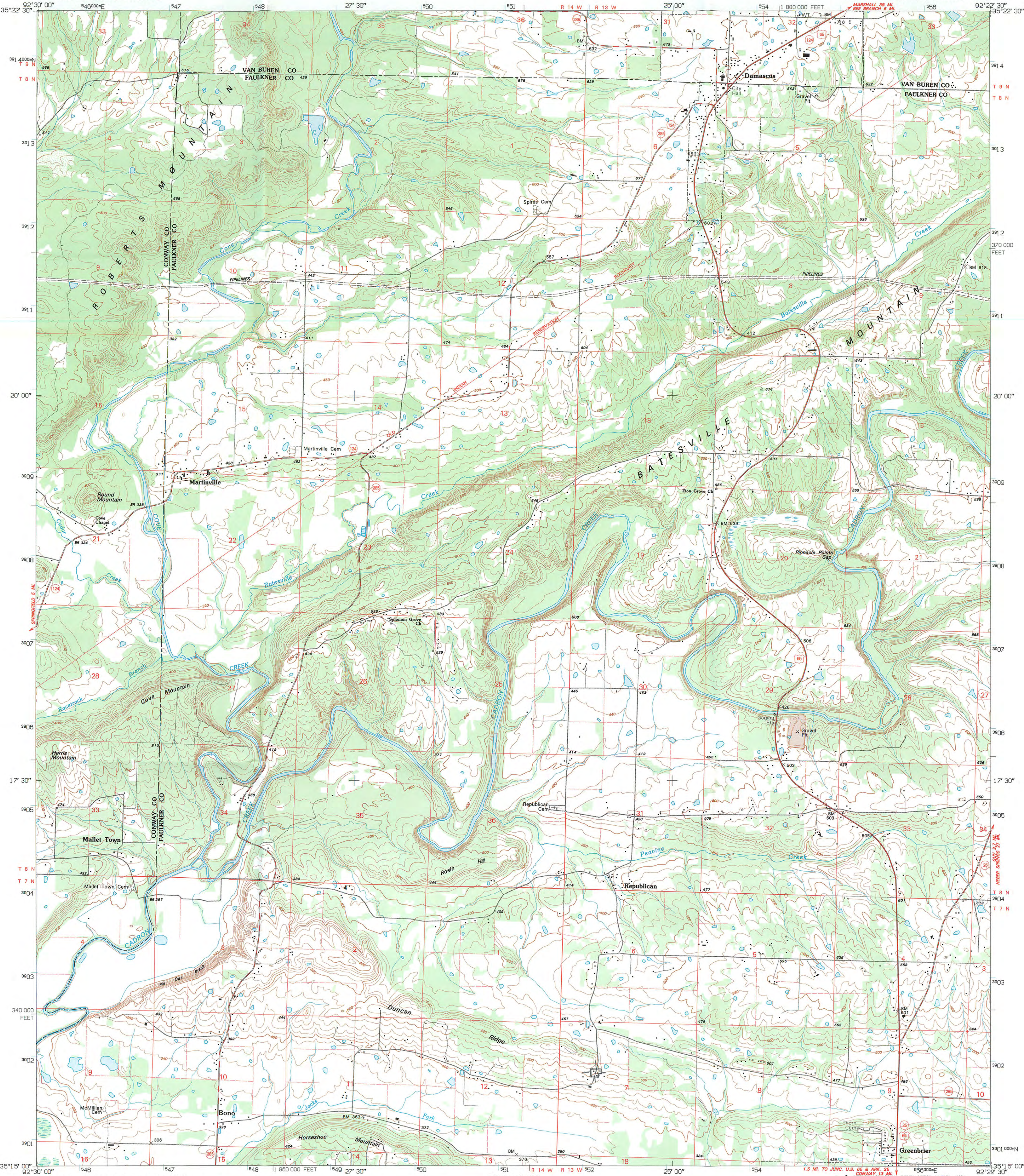
Holly Hope

November 09, 2002

On file at AHPP
View from west

UNITED STATES
DEPARTMENT OF THE INTERIOR
GEOLOGICAL SURVEY

DAMASCUS QUADRANGLE
ARKANSAS
7.5 MINUTE SERIES (TOPOGRAPHIC)



Produced by the United States Geological Survey
Control by USGS and NOS/NOAA
Topography by photogrammetric methods from aerial photographs
taken 1958. Field checked 1961. Revised from aerial photographs
taken 1989-90. Field checked 1993. Map edited 1994
Universal Transverse Mercator projection
10,000-foot grid ticks: Arkansas coordinate system, north zone
1000-meter Universal Transverse Mercator grid ticks, zone 15, shown in blue
1927 North American Datum (NAD 27)
North American Datum of 1983 (NAD 83) is shown by dashed corner ticks
The values of the shift between NAD 27 and NAD 83 for 7.5-minute
intersections are given in USGS Bulletin 1875
Fine red dashed lines indicate selected fence and field lines where
generally visible on aerial photographs. This information is unchecked

UTM GRID AND 1994 MAGNETIC NORTH
DECLINATION AT CENTER OF SHEET
0°19' 3" N
6 MILS
53 MILS

SCALE 1:24000
KILOMETERS
METERS
MILES
1 0 1 2
1000 0 1000 2000 3000 4000 5000 6000 7000 8000 9000 10000
Feet
0 1000 2000 3000 4000 5000 6000 7000 8000 9000 10000
CONTOUR INTERVAL 20 FEET
NATIONAL GEODETIC VERTICAL DATUM OF 1929
Castberry-Hawington Historic District
Republican, Faulkner Co. Ark
15/552145/3901828

QUADRANGLE LOCATION
ARKANSAS

ROAD CLASSIFICATION
Primary highway
hard surface
Secondary highway
hard surface
Light-duty road, hard or
improved surface
Unimproved road
Interstate Route
U.S. Route
State Route

1	2	3
4	5	6
7	8	9

- 1 Formosa
- 2 Bee Branch
- 3 Morganton
- 4 Springfield
- 5 Guy
- 6 Menifee
- 7 Greenbrier
- 8 Holland

DAMASCUS, ARK.
35092-C4-TF-024
1994
DMA 7554 IV SW-SERIES V884

THIS MAP COMPLIES WITH NATIONAL MAP ACCURACY STANDARDS
FOR SALE BY U.S. GEOLOGICAL SURVEY DENVER, COLORADO 80225, OR RESTON, VIRGINIA 22092
AND ARKANSAS GEOLOGICAL COMMISSION, LITTLE ROCK, ARKANSAS 72204
A FOLDER DESCRIBING TOPOGRAPHIC MAPS AND SYMBOLS IS AVAILABLE ON REQUEST



The Department of
**Arkansas
Heritage**

Mike Beebe
Governor

Cathie Matthews
Director

Arkansas Arts Council

*

Arkansas Natural Heritage
Commission

*

Delta Cultural Center

*

Historic Arkansas Museum

*

Mosaic Templars
Cultural Center

*

Old State House Museum



Arkansas Historic
Preservation Program

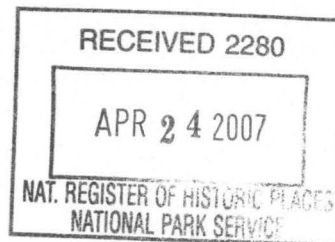
1500 Tower Building
323 Center Street
Little Rock, AR 72201
(501) 324-9880
fax: (501) 324-9184
tdd: (501) 324-9811
e-mail:

info@arkansaspreservation.org

website:

www.arkansaspreservation.com

An Equal Opportunity Employer



March 05, 2007

Dr. Janet Matthews
Chief of Registration
United States Department of the Interior
National Register of Historic Places
National Park Service
8th Floor
1201 Eye Street, NW
Washington, DC 20005

RE: Castleberry-Harrington Historic District, Republican, Faulkner
Co.

Dear Dr. Matthews:

We are enclosing for your review the above-referenced nomination.
The Arkansas Historic Preservation Program has complied with all applicable
nominating procedures and notification requirements in the nomination
process.

If you need further information, please call Ralph S. Wilcox of my staff at
(501) 324-9787. Thank you for your cooperation in this matter.

Sincerely,

Cathie Matthews
State Historic Preservation Officer

CM: hh

Enclosure