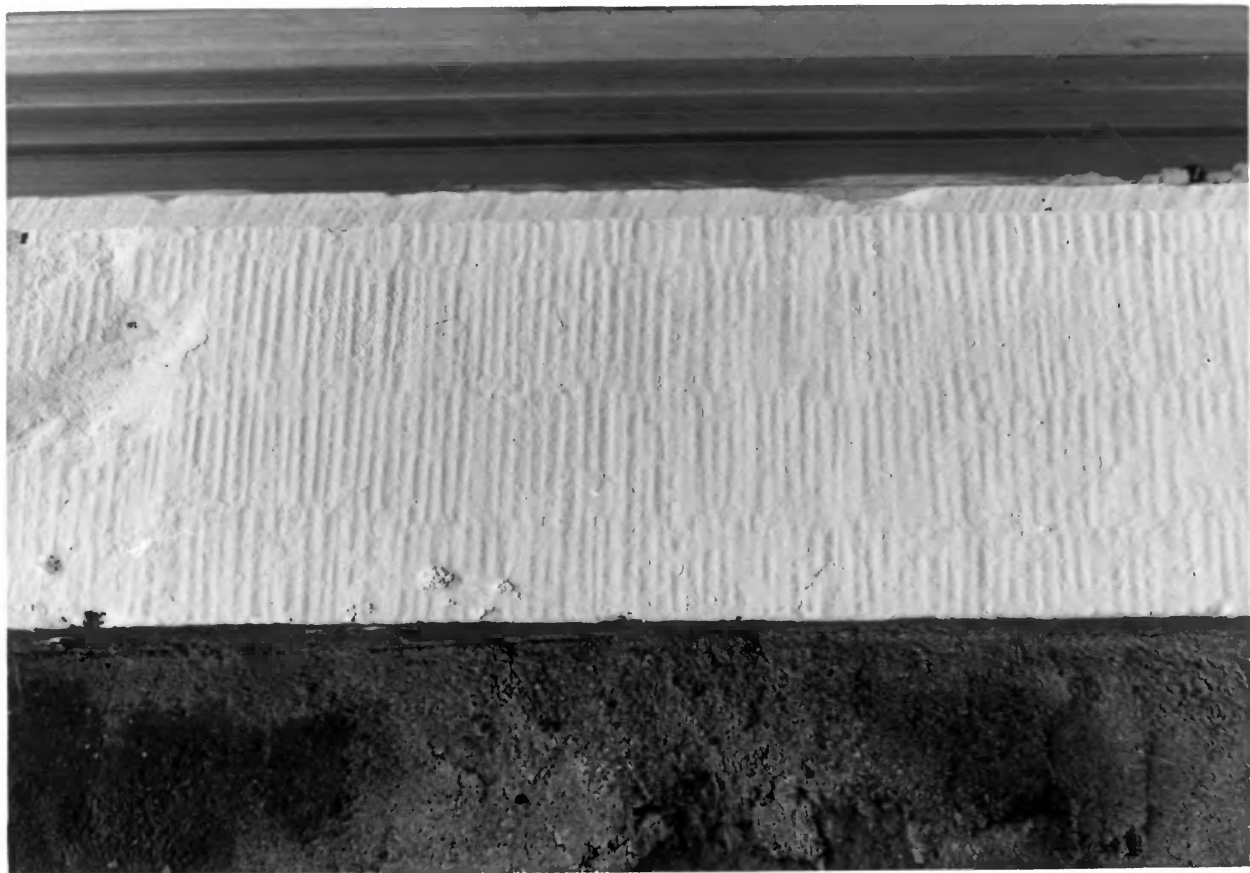




1. John Braun House, GERMAN SETTLEMENT  
PROPERTIES FOUR MILE CREEK AREA
2. Eight Mile Road, Campbell Co., Ky.
3. Stephen C. Gordon
4. January 6, 1983
5. Kentucky Heritage Council
6. South and east elevations, looking NW
7. Photo #94



1. John Braun House, GERMAN SETTLEMENT  
PROPERTIES FOUR MILE CREEK AREA
2. Eight Mile Road, Campbell Co., Ky.
3. Stephen C. Gordon
4. January 6, 1983
5. Kentucky Heritage Council
6. East or front elevation, looking W
7. Photo #95



1. John Braun House, GERMAN SETTLEMENT  
PROPERTIES FOUR MILE CREEK AREA
2. Eight Mile Road, Campbell Co., Ky.
3. Stephen C. Gordon
4. January 6, 1983
5. Kentucky Heritage Council
6. Bush Hammered window frames
7. Photo #96



1. John Braun House, GERMAN SETTLEMENT  
PROPERTIES FOUR MILE CREEK AREA
2. Eight Mile Road, Campbell Co., Ky.
3. Stephen C. Gordon
4. January 6, 1983
5. Kentucky Heritage Council
6. John Braun Barn, south and east elevations  
looking NW
7. Photo #97





1. John Braun House, GERMAN SETTLEMENT  
PROPERTIES FOUR MILE CREEK AREA
2. Eight Mile Road, Campbell Co., Ky.
3. Stephen C. Gordon
4. January 6, 1983
5. Kentucky Heritage Council
6. John Braun Barn: dressed foundation
7. Photo #98



1. John Braun House, GERMAN SETTLEMENT  
PROPERTIES FOUR MILE CREEK AREA
2. Eight Mile Road, Campbell Co., Ky.
3. Stephen C. Gordon
4. January 6, 1983
5. Kentucky Heritage Council
6. John Braun Barn: manger bays, interior
7. Photo #99