



Mini Storage

Business Record Storage

All Sizes Available

Event Parking

Portland Van & Storage Building  
407 N. Broadway Street  
Portland, Multnomah County, Oregon

DESCRIPTION: Exterior View, Looking  
north at South (Main) Elevation

HERITAGE INVESTMENT CORPORATION  
123 N.W. SECOND AVENUE, SUITE 200  
PORTLAND, OREGON 97209

Photo 1 of 20

**THE STORAGE PLACE**

- BUSINESS RECORD STORAGE
- PRIVATE MINI-LOCKERS AP 200
- EVENT PARKING

**GENERAL**

288-2925

**STORAGE**  
EVENT  
PARKING

Portland Van & Storage Building  
407 N. Broadway Street  
Portland, Multnomah County, Oregon

DESCRIPTION: Exterior View, Looking  
east at West Elevation

HERITAGE INVESTMENT CORPORATION  
123 N.W. SECOND AVENUE, SUITE 200  
PORTLAND, OREGON 97209

Photo 2 of 20

Heritage Photo - 1995



Portland Van & Storage Building  
407 N. Broadway Street  
Portland, Multnomah County, Oregon

DESCRIPTION: Exterior View, Looking  
south at North Elevation

HERITAGE INVESTMENT CORPORATION  
123 N.W. SECOND AVENUE, SUITE 200  
PORTLAND, OREGON 97209

Photo 3 of 20

Heritage Photo - 1995

STORAGE  
PLACE

\*\*\*  
OFFICE  
RECORD  
STORAGE

\*\*\*  
PRIVATE  
MINI  
STORAGE

\*\*\*  
ALL SIZES!  
288-2925



Portland Van & Storage Building  
407 N. Broadway Street  
Portland, Multnomah County, Oregon

DESCRIPTION: Exterior View, Looking  
west at East Elevation

HERITAGE INVESTMENT CORPORATION  
123 N.W. SECOND AVENUE, SUITE 200  
PORTLAND, OREGON 97209

Photo 4 of 20

Heritage Photo - 1995





MINI-STORAGE  
ENTRANCE LOCATED  
AROUND CORNER  
OFF NORTH  
INTERSTATE WAY  
←

707

Portland Van & Storage Building  
407 N. Broadway Street  
Portland, Multnomah County, Oregon

DESCRIPTION: Exterior Detail,  
Doorway, looking north

HERITAGE INVESTMENT CORPORATION  
123 N.W. SECOND AVENUE, SUITE 200  
PORTLAND, OREGON 97209

Photo 5 of 20

Heritage Photo - 1995



Portland Van & Storage Building  
407 N. Broadway Street  
Portland, Multnomah County, Oregon

DESCRIPTION: Exterior Detail,  
Windows, looking north

HERITAGE INVESTMENT CORPORATION  
123 N.W. SECOND AVENUE, SUITE 200  
PORTLAND, OREGON 97209

Photo 6 of 20

Heritage Photo - 1995



Portland Van & Storage Building  
407 N. Broadway Street  
Portland, Multnomah County, Oregon

DESCRIPTION: Exterior Detail, Windows  
looking southwest

HERITAGE INVESTMENT CORPORATION  
123 N.W. SECOND AVENUE, SUITE 200  
PORTLAND, OREGON 97209

Photo 7 of 20

Heritage Photo - 1995



Portland Van & Storage Building  
407 N. Broadway Street  
Portland, Multnomah County, Oregon

DESCRIPTION: Exterior Detail, Loading  
Doors, looking northwest

HERITAGE INVESTMENT CORPORATION  
123 N.W. SECOND AVENUE, SUITE 200  
PORTLAND, OREGON 97209

Photo 8 of 20

Heritage Photo - 1995





Portland Van & Storage Building  
407 N. Broadway Street  
Portland, Multnomah County, Oregon

DESCRIPTION: Interior View, Public  
Rooms along south (looking west)

HERITAGE INVESTMENT CORPORATION  
123 N.W. SECOND AVENUE, SUITE 200  
PORTLAND, OREGON 97209

Photo 9 of 20

Heritage Photo - 1995



Portland Van & Storage Building  
407 N. Broadway Street  
Portland, Multnomah County, Oregon

DESCRIPTION: Interior View, Public  
Rooms along south (looking east)

HERITAGE INVESTMENT CORPORATION  
123 N.W. SECOND AVENUE, SUITE 200  
PORTLAND, OREGON 97209

Photo 10 of 20

Heritage Photo - 1995



Portland Van & Storage Building  
407 N. Broadway Street  
Portland, Multnomah County, Oregon

DESCRIPTION: Interior Detail, Public  
Rooms along south (looking northeast)

HERITAGE INVESTMENT CORPORATION  
123 N.W. SECOND AVENUE, SUITE 200  
PORTLAND, OREGON 97209

Photo 11 of 20

Heritage Photo - 1995



Portland Van & Storage Building  
407 N. Broadway Street  
Portland, Multnomah County, Oregon

DESCRIPTION: Interior Detail, Public  
Rooms along south (looking north)

HERITAGE INVESTMENT CORPORATION  
123 N.W. SECOND AVENUE, SUITE 200  
PORTLAND, OREGON 97209

Photo 12 of 20

Heritage Photo - 1995





Portland Van & Storage Building  
407 N. Broadway Street  
Portland, Multnomah County, Oregon

DESCRIPTION: Interior View, First  
Floor Storage areas (looking  
southwest)

HERITAGE INVESTMENT CORPORATION  
123 N.W. SECOND AVENUE, SUITE 200  
PORTLAND, OREGON 97209

Photo 13 of 20

Heritage Photo - 1995



1C-34

Portland Van & Storage Building  
407 N. Broadway Street  
Portland, Multnomah County, Oregon

DESCRIPTION: Interior Detail,  
Interior Doors in Storage Area

HERITAGE INVESTMENT CORPORATION  
123 N.W. SECOND AVENUE, SUITE 200  
PORTLAND, OREGON 97209

Photo 14 of 20

Heritage Photo - 1995



Portland Van & Storage Building  
407 N. Broadway Street  
Portland, Multnomah County, Oregon

DESCRIPTION: Interior View, Second  
Floor

HERITAGE INVESTMENT CORPORATION  
123 N.W. SECOND AVENUE, SUITE 200  
PORTLAND, OREGON 97209

Photo 15 of 20

Heritage Photo - 1995



Portland Van & Storage Building  
407 N. Broadway Street  
Portland, Multnomah County, Oregon

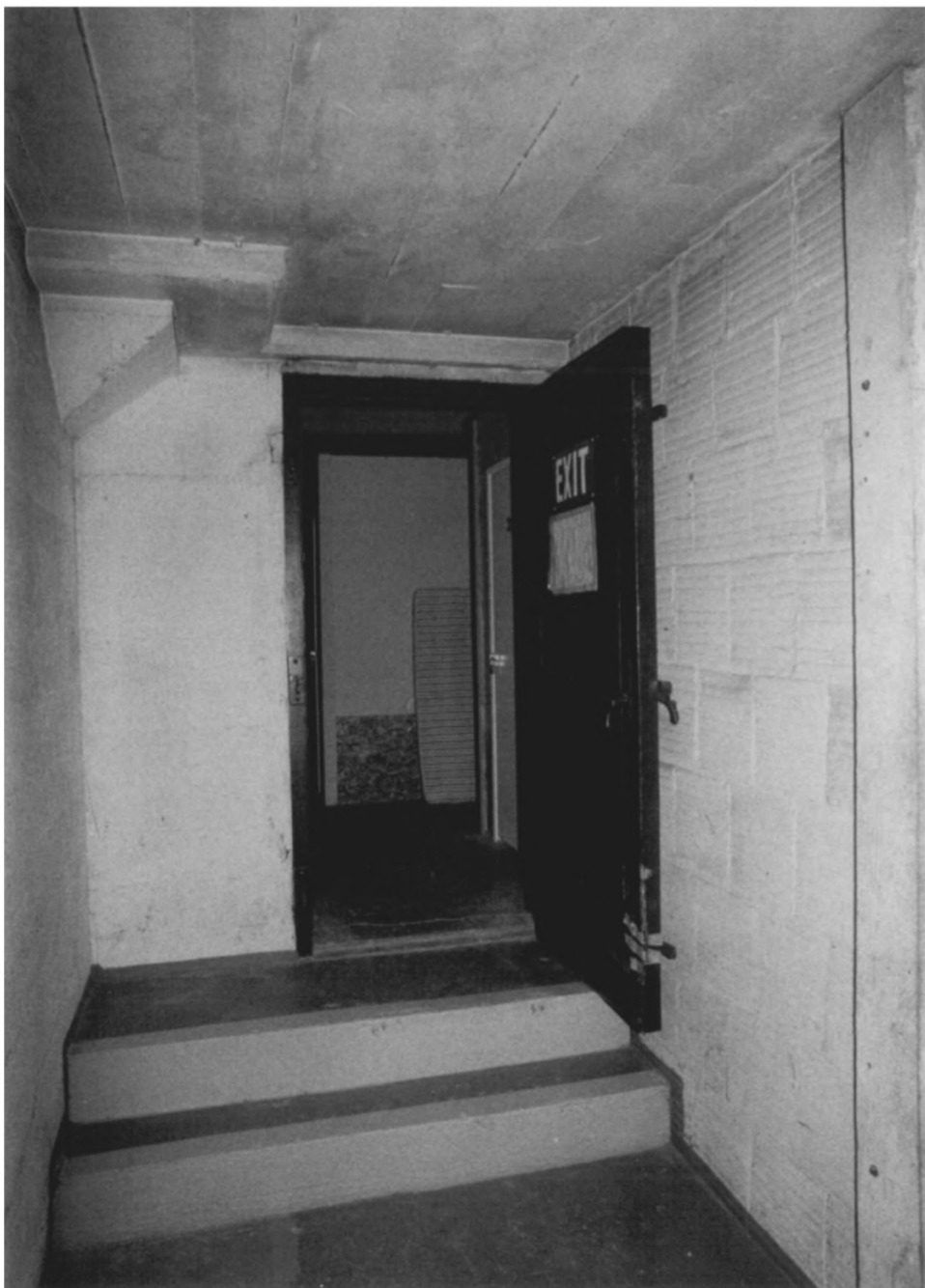
DESCRIPTION: Interior View, Second  
Floor

HERITAGE INVESTMENT CORPORATION  
123 N.W. SECOND AVENUE, SUITE 200  
PORTLAND, OREGON 97209

Photo 16 of 20

Heritage Photo - 1995





Portland Van & Storage Building  
407 N. Broadway Street  
Portland, Multnomah County, Oregon

DESCRIPTION: Interior Detail,  
Doorways

HERITAGE INVESTMENT CORPORATION  
123 N.W. SECOND AVENUE, SUITE 200  
PORTLAND, OREGON 97209

Photo 17 of 20

Heritage Photo - 1995



EXIT  
3

Portland Van & Storage Building  
407 N. Broadway Street  
Portland, Multnomah County, Oregon

DESCRIPTION: Interior Detail, Third  
Floor Doorway

HERITAGE INVESTMENT CORPORATION  
123 N.W. SECOND AVENUE, SUITE 200  
PORTLAND, OREGON 97209

Photo 18 of 20

Heritage Photo - 1995



Portland Van & Storage Building  
407 N. Broadway Street  
Portland, Multnomah County, Oregon

DESCRIPTION: Interior View, Fourth  
Floor

HERITAGE INVESTMENT CORPORATION  
123 N.W. SECOND AVENUE, SUITE 200  
PORTLAND, OREGON 97209

Photo 19 of 20

Heritage Photo - 1995



Portland Van & Storage Building  
407 N. Broadway Street  
Portland, Multnomah County, Oregon

DESCRIPTION: Interior Detail, Fourth  
Floor - scarring from partitions

HERITAGE INVESTMENT CORPORATION  
123 N.W. SECOND AVENUE, SUITE 200  
PORTLAND, OREGON 97209

Photo 20 of 20

Heritage Photo - 1995