

TENNESSEE MULTIPLE PROPERTY FORM

RECEIVED

MAR 03 1988

Title: Historic Resources of Williamson County

Historic Name: Truett, Alpheus, House (WM-65)

Common Name: Truett, Alpheus, House.

NATIONAL REGISTER

Classification: Building

Owner: Elliot Himmelfarb, 228 Franklin Road, Franklin, TN 37064.

Location: On Highway 31 (Franklin Road) three tenths of a mile north of the Franklin square.

<u>Contributing:</u>		<u>Non-Contributing:</u>	
Buildings	1	Buildings	0
Structures	0	Structures	2
Sites	0	Sites	0
<u>Total:</u>	1	<u>Total:</u>	2

Description:

The Alpheus Truett House is a two-story frame Greek Revival influenced residence constructed ca. 1846. On the main (west) facade is a two-story hipped roof portico with square Doric motif columns. Below the Doric capitals are incised decorative panels. The railing on the first story has turned balusters while the second story has a lattice railing. The eaves of the porch have dentil molding and at the roofline are rectangular panels and drop pendants. The main entrance has a ca. 1900 glass and frame door with a ca. 1980 leaded glass light. Flanking the door are Doric motif pilasters and three light sidelights with frame lower panels. The upper and lower lights of the sidelights are original stained glass while the other lights and transom are ca. 1980 leaded and frosted glass. The door surround has bead and reel molding and architrave shoulders. The main entrance is slightly recessed within a vestibule which also has architrave shoulders and decorative moldings.

Windows in the house are ca. 1900 one-over-one sash with frame cornices and pellet molding. The second story of the central bay has a ca. 1900 glass and frame door with three light sidelights. Above the door is a frame cornice with pellet molding. The house has weatherboard siding and a gable roof of metal standing seam. On the south facade is a two-story portico with eight Doric motif columns. This portico has square balusters on the first floor and milled balusters on the second story. At the roofline are paired brackets and rectangular panels. Doors on the south facade are ca. 1900 glass and frame with added stained glass. At the rear of the house are one and two-story frame additions added ca. 1920 and ca. 1980.

The interior of the house was inaccessible but according to the owner retains its original central hall plan and staircase. At the rear of the house are two non-contributing frame outbuildings. The house sits on an urban lot just east of Franklin Road north of downtown Franklin.

Period of Significance: ca. 1846; 1864.

Area of Significance: Architecture/Military

Criterion: A and C

Architect/Builder: Unknown

Statement of Significance:

The Alpheus Truett House is a notable example of a frame ante-bellum central passage plan residence. It is one of only two residences included in the nomination with porticos on both the main and side facades. The house has not been significantly altered and retains its original appearance. The house is also notable as the headquarters of Union General John Schofield during the Battle of Franklin on November 30, 1864.

Alpheus Truett was born in 1823 and settled in Williamson County in the 1840s. Truett operated a well known nursery business on property he purchased just across the Harpeth River from Franklin. Around 1846, Truett constructed this two-story frame residence adjacent to his nursery. The house he built was a large Greek Revival influenced central hall plan with porticos facing both west and south.

The Truett House was an important site during the Battle of Franklin on November 30, 1864. The house was used by Union commander General John Schofield who directed his wagons across the Harpeth River early in the day. With the approach of Hood's Confederate army, Schofield and his officers conferred on the second story of the south portico to direct the placement of his troops. The house remained the headquarters of the Union army throughout the battle and after their retreat to Nashville the house sheltered wounded soldiers of both sides.

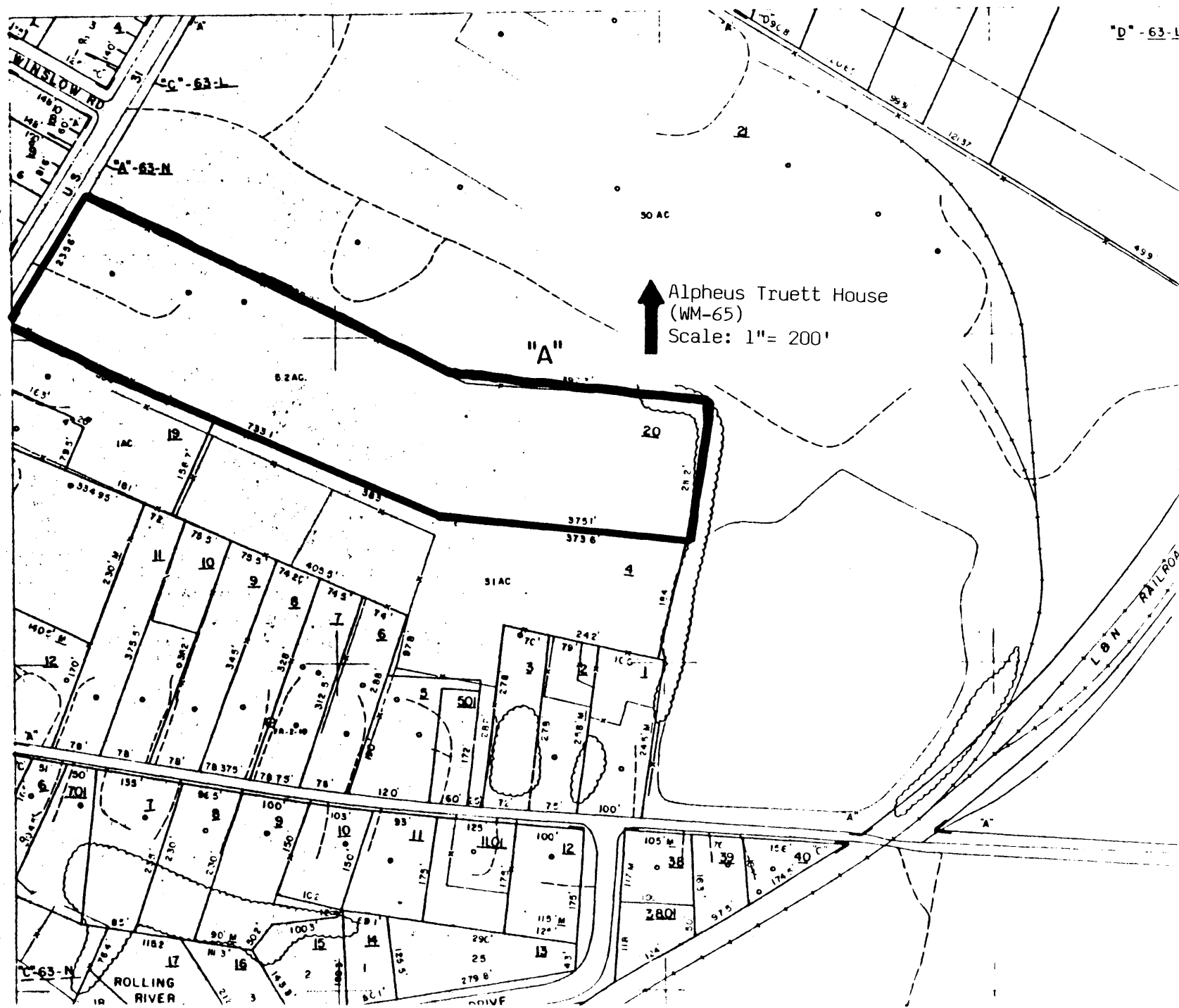
Truett continued to operate his nursery and resided at his house until his death in 1898. His son, Edwin Campbell Truett operated the nursery well into the 20th century. By the 1960s, the nursery was closed and its site was subdivided for residences. No major alterations have since taken place to the main facades of the residence.

Acreage: 5.2 acres

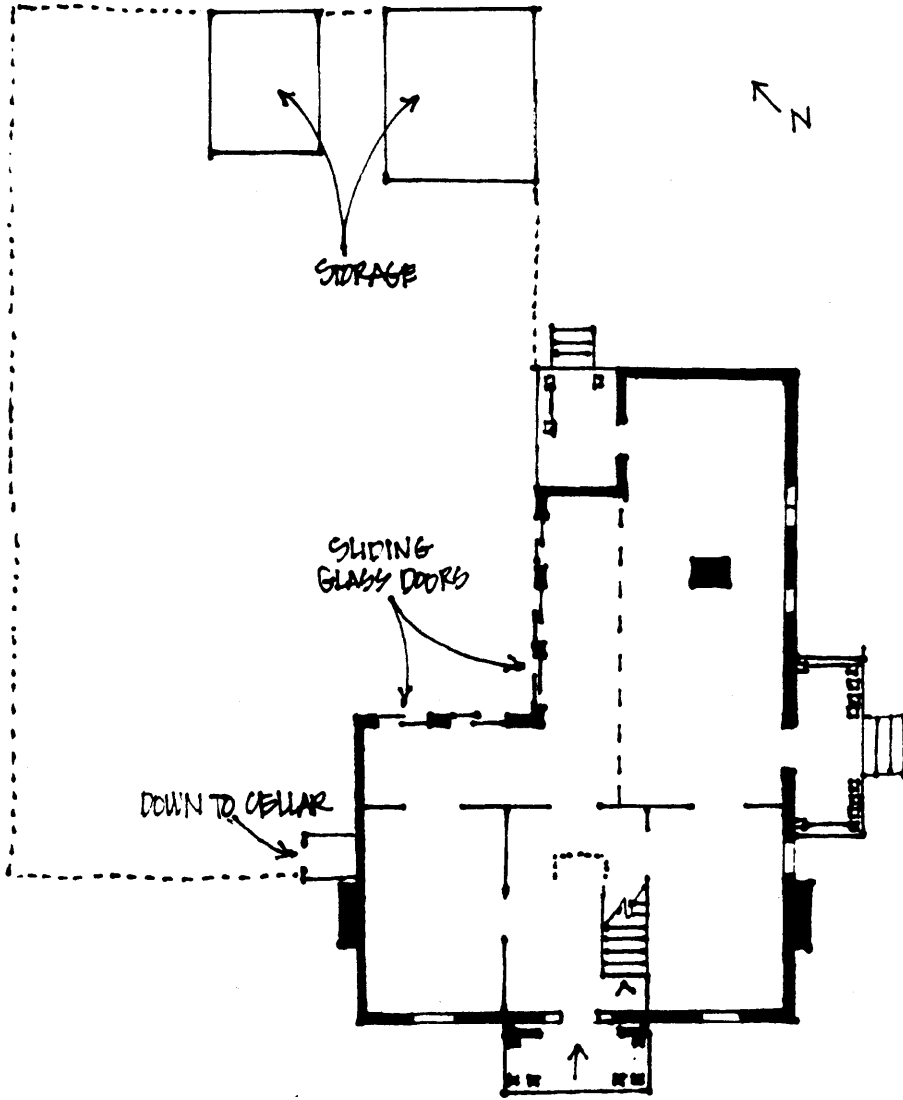
UTM References: Franklin Quad/16/512400/3976180

Verbal Boundary Description and Justification: The boundary of the Alpheus Truett House is illustrated on accompanying Williamson County tax map # 63M, lot 20. The boundary includes the legal boundary of the property and is sufficient to protect the historical setting of the site.

Supplemental Bibliographical References: Historic Williamson County, Bowman.



#65 ALPHEUS TRUETT HOUSE



DOWN TO CELLAR

SLIDING GLASS DOORS

STORAGE



TO FRANKLIN ROAD



* NOT TO SCALE