

12. STEPHEN FOWLER HALE HOUSE
223 Wilson St.

Mrs. J. O. Jenkins
220 Wilson St.
Eutaw, AL 35462

Mrs. Hal Hardenbergh
405 Main St.
Eutaw, AL 35462

Mrs. James N. Lunsford
Mrs. James L. Vail
c/o Mrs. Hal Hardenbergh

Lot 185 Tax Map 35-18-08-33-4-7-15

4.58 acres (302' x 662')

Latitude: 32° 50' 12"

Longitude: 87°

c. 1842

Builder/Architect unknown

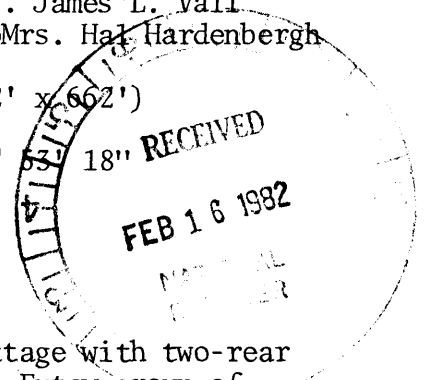
? rear additions, porch posts covered

SIGNIFICANCE: This is a sophisticated story and a half cottage with two-rear L-s making a U-shape. It is one of four extant examples in Eutaw group of applications of 3-bay pedimented tetrastyle portico to a 1-1½ story house, and one of two in which the Doric order was originally employed. It is one of the few buildings to retain an outbuilding - a two room structure of undetermined use.

DESCRIPTION: The earlier house in the vicinity to which the Hale residence can be compared is the Robert Creswell dwelling at the north end of Mesopotamia. Similarities are in the general layout, as the 1830's house is steep-roofed and has little, if any, architectural dress. The home of Stephen F. Hale, on the other hand, is a sophisticated building, with pedimented Greek Doric portico for entrance, full entablature and pilasters across the front, subsidiary square-piered portico on the south side, and a U-shaped gallery embracing a courtyard on axis at the rear. It would seem that the whole house, including the two symmetrical wings at the back, was built all at one time.

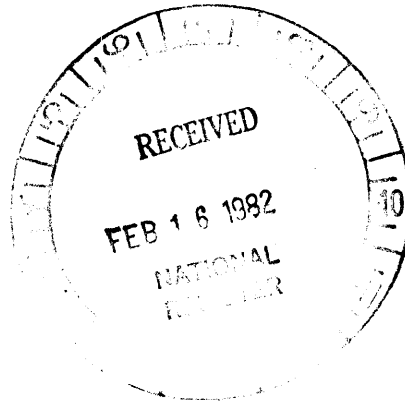
The portico and rear gallery of the Stephen F. Hale House are treated like interiors, not only in being on floor level with the first story, but their walls are plastered, and windows on the portico have paneled aprons beneath the sashes. The portico has antepodia or abutments flanking the steps, and initially its supports were Doric columns, recently covered by octagonal piers copied after those on the rear gallery. The center transverse hall measures about 11 feet wide and a little over 31 feet long.

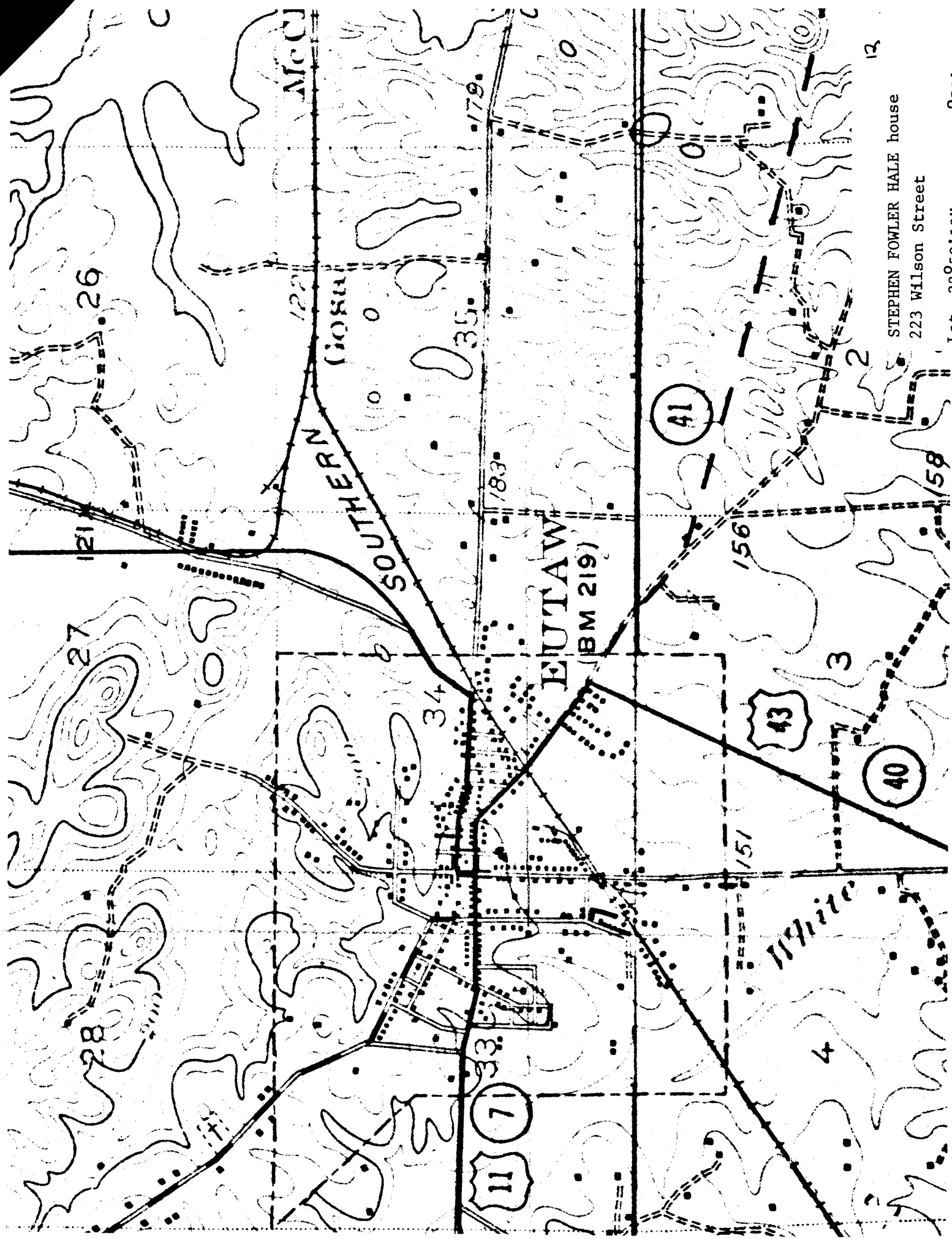
The stairway rises from the rear, the first five steps being winders pivoting around a square post surmounted by an urn whose cap is the lower extremity of the handrail. Four rooms flank the hall, the pair behind about 3 feet less deep than those in front and encircled by chairrailing. Fireplaces are against the outer walls, and mantels are pilastered. Door and window trim is about 6-inches wide, and that in the hall differs from that in adjoining rooms. On the north side are the parlors, connected by great sliding doors. The front room on the south side may have been a library or office, the room behind used for dining, as suggested by the closet under the stairs. However, the second room in the south wing may have served this purpose, having a long, narrow "pantry" at the west end. The kitchen was in a separate building south of the house, convenient to either of the four rooms on this side. The other rooms, upstairs as well as down, were bedrooms, except the two small storerooms at each terminus of the gallery.



STEPHEN FOWLER HALE HOUSE
CONTINUED-----

REMODELING: The four original fluted Doric columns supporting the pedimented roof over the front portico are now covered transforming them into octagonal piers. New rooms have been added to rear and a vent inserted in portico pediment.

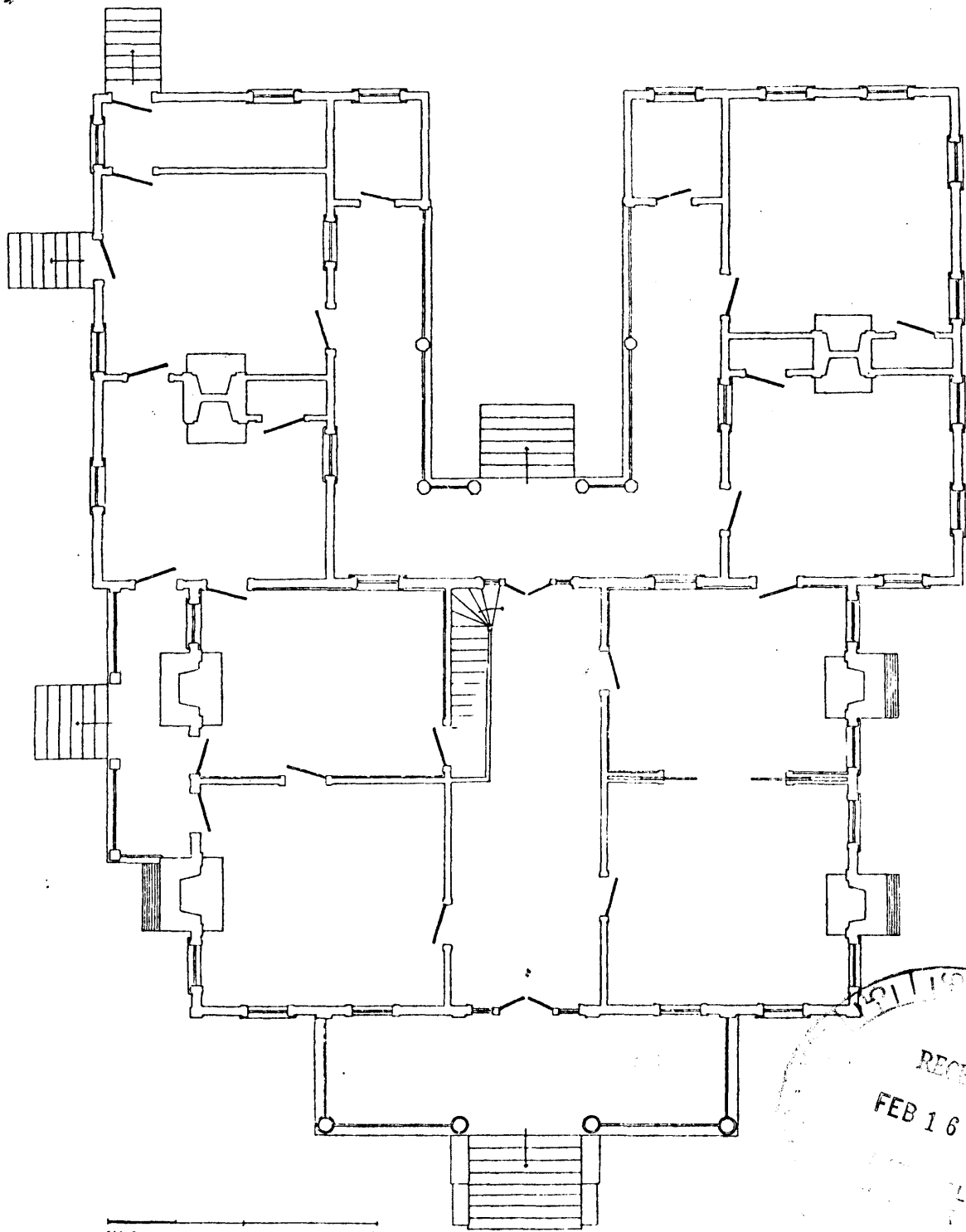




STEPHEN FOWLER HALE house
223 Wilson Street

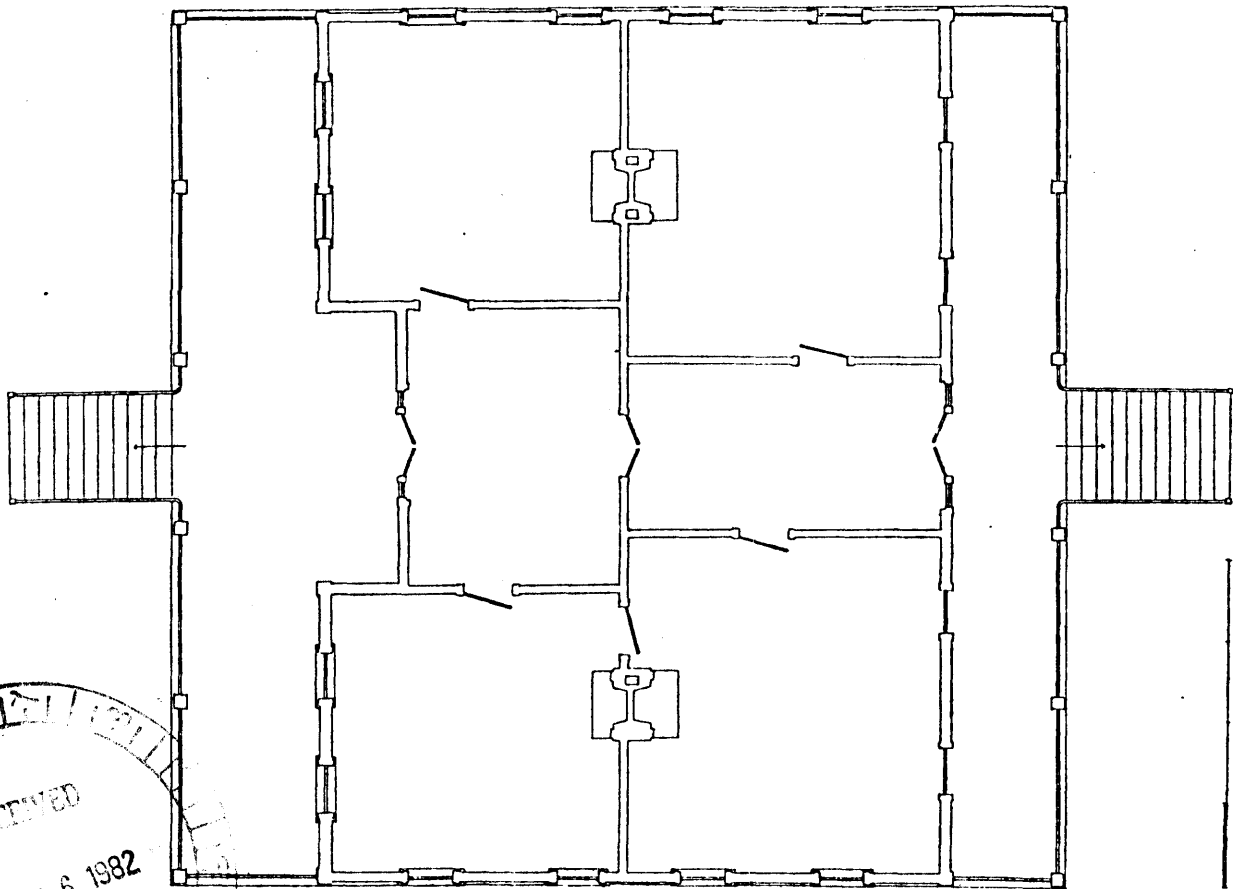
Lat. 32°50'12" Long. 87°53'18"

13

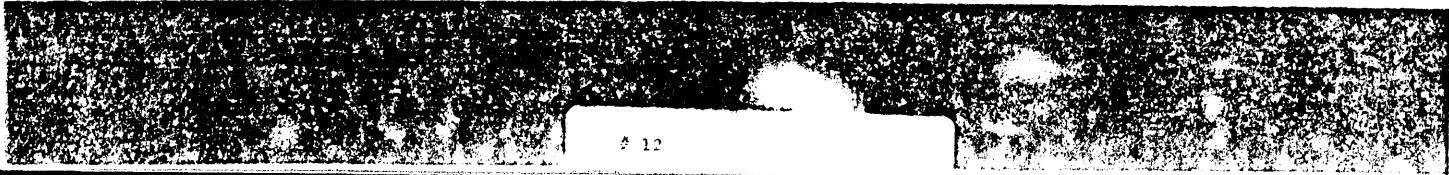
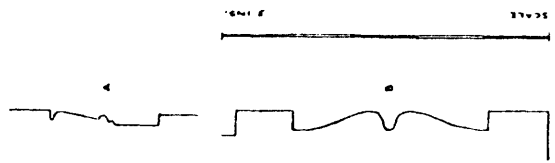
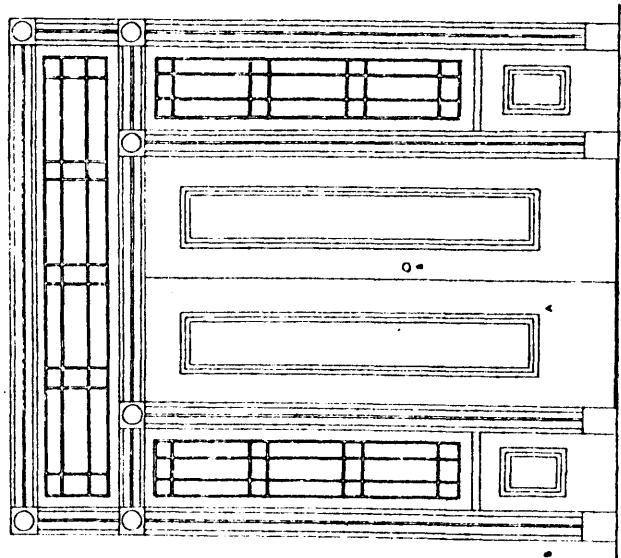
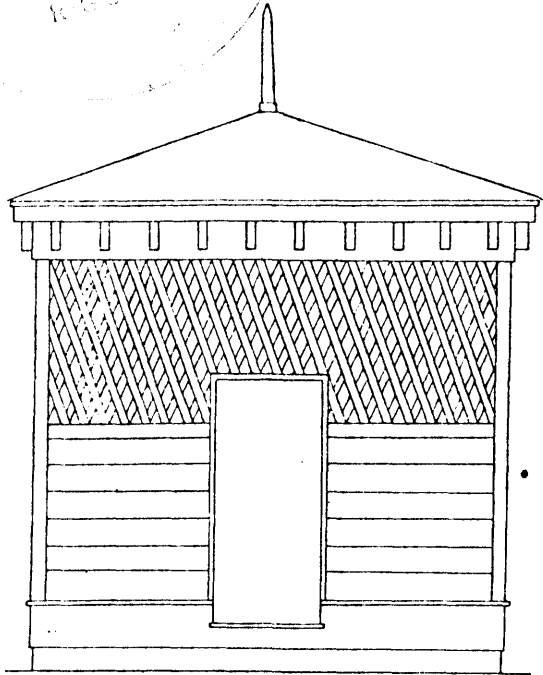


RECEIVED
 FEB 16 1982

08 11 20



RECEIVED
 FEB 16 1982
 NATIONAL
 ARCHIVES



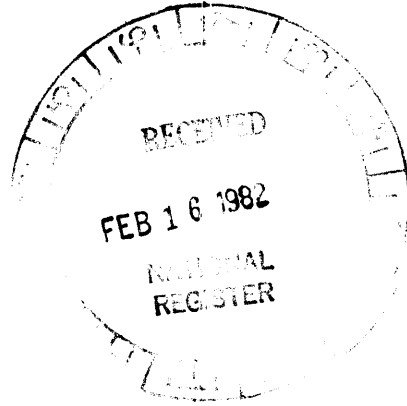
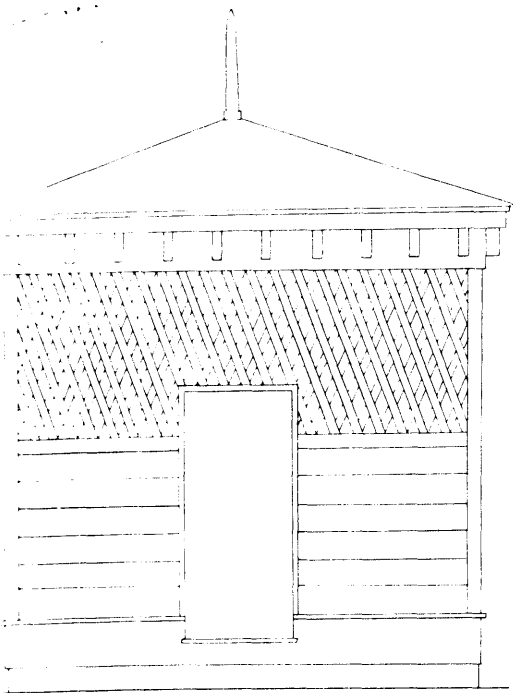


fig. 84
Front Elevation of Small Out Building to Rear of Pierce House, One of a Pair.

fig. 85
Store House and Well Pavilion on South Side of Pierce House. (Photo 14 March 1977)

