



Long-Briggs House  
Russellville, Logan County, Ky.

MAY 15 1978

William J. Hearn  
Kentucky Heritage Commission  
October, 1977

NOV 27 1978

Photo 1.

Photo taken from the south  
showing the facade.



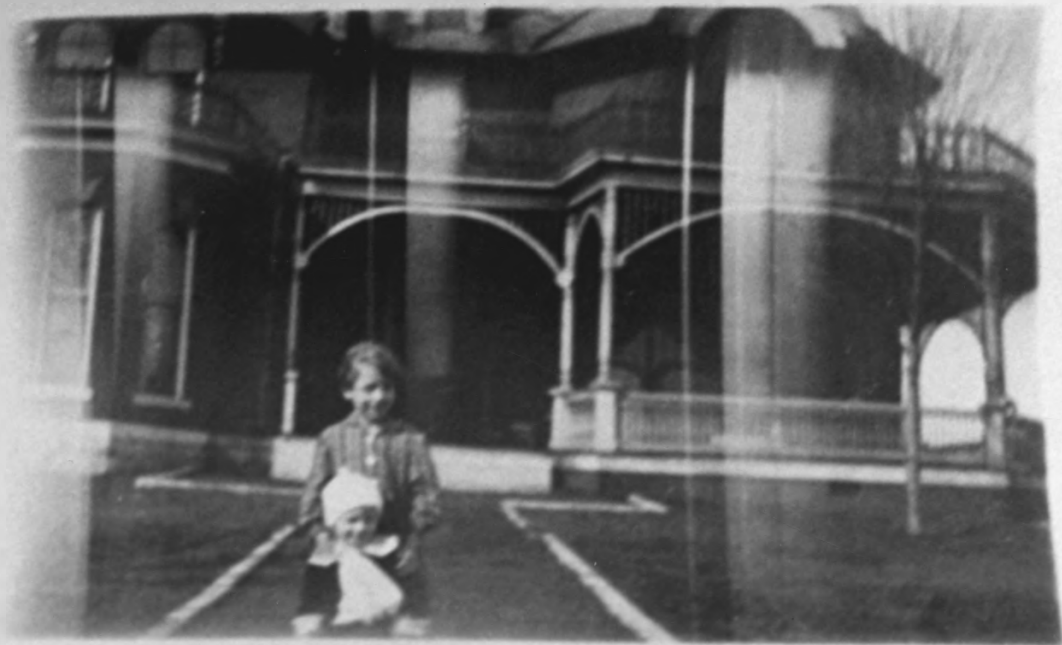
Long-Briggs House  
Russellville, Logan County, Ky.

MAY 15 1978

Martha Smith  
Court's Hall, 540 South Main  
Russellville, Ky  
September, 1977

NOV 27 1978

Photo 2.  
Photo taken from the southwest.



Long-Briggs House  
Russellville, Logan County, Ky.

MAY 15 1978

Bill Hearn  
Kentucky Heritage Commission  
October, 1977

NOV 27 1978

Photo 3:

Photo taken in the early 1900s  
showing the original porch.



Long-Briggs House  
Russellville, Logan County, Ky.

MAY 15 1978

Martha Smith  
Court's Hall, 540 South Main  
Russellville, Kentucky

September, 1977

NOV 27 1978

Photo 4.

Interior photo of the main  
staircase.





Long-Briggs House

Russellville, Logan County, Ky.

MAY 15 1978

Martha Smith

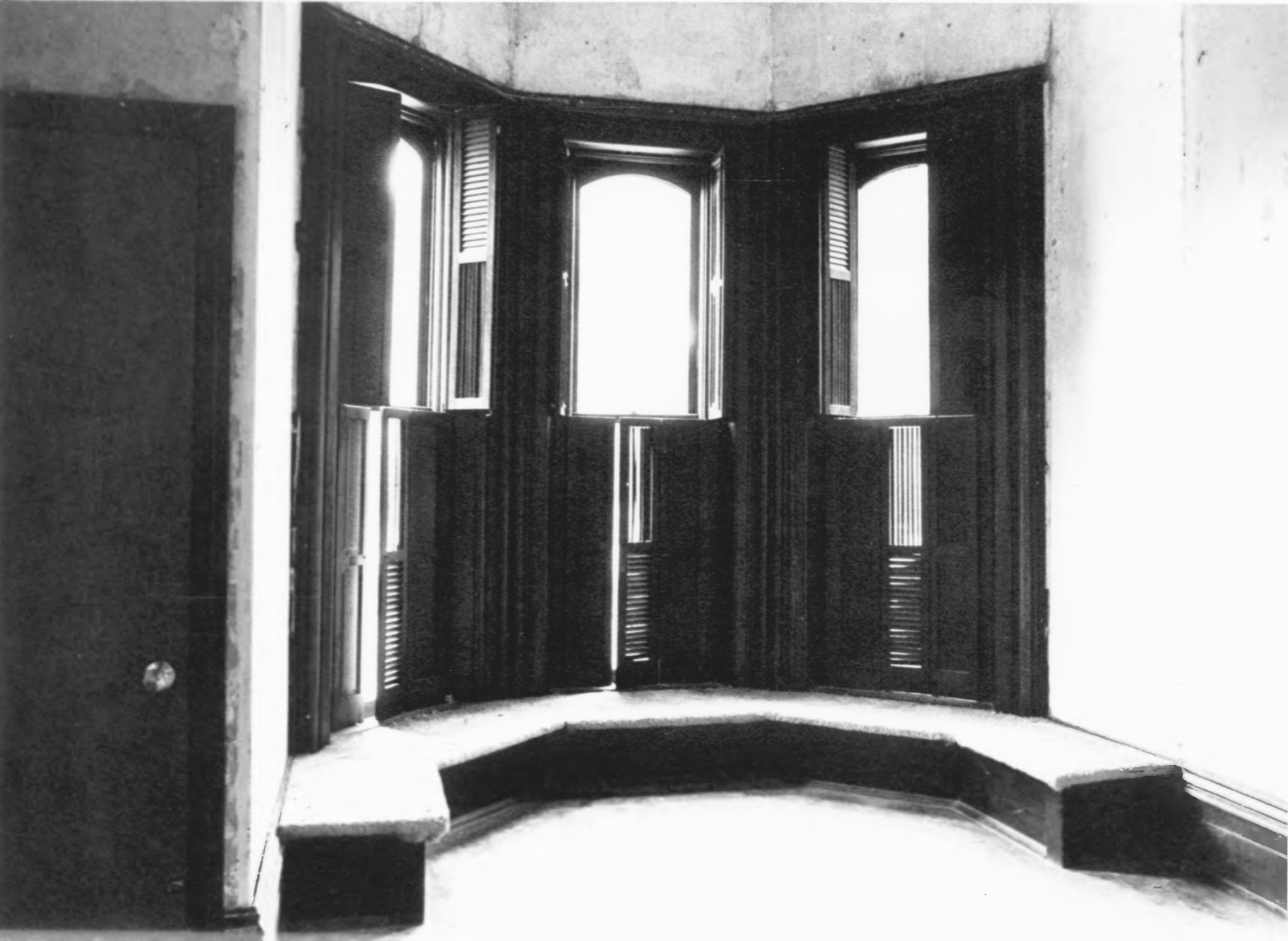
Courts Hall, 540 South Main

Russellville, Ky.

September, 1977 NOV 27 1978

Photo 5.

Interior photo showing the second floor hall.



Long-Briggs House  
Russellville, Logan County, Ky.

MAY 15 1978

Martha Smith  
Court's Hall, 540 South Main  
Russellville, Ky  
September 1977 NOV 27 1978

Photo 6.  
Interior photo showing the bay  
window in the west wing.



Long-Briggs House  
Russellville, Logan County, Ky.

Martha Smith  
Court's Hall, 540 South Main  
Russellville, Ky  
September, 1977

**NOV 27 1978**

Photo 7.  
Interior photo showing an original  
mantel and grate.

**MAY 15 1978**

KENTUCKY—LOGAN CO.  
NOTE SERIES (TOPOGRAPHIC)  
SW/4 RUSSELLVILLE 15' QUADRANGLE

(HOMER)

Long-Briggs House  
Russellville, Logan County  
Kentucky

Latitude: 36° 50' 50"  
Longitude: 86° 53' 37"  
Map 1

IRG 8.5 MI.  
YS 3.7 MI. 55'

1670 000 FEET 86°52'30"  
36°52'30"



COSTELOW 13 MI.  
MORGANTOWN 30 MI.

190 000  
FEET  
DENNIS 5.1 MI.  
BOWLING GREEN 28 MI.

0.2 MI. TO U.S. 68

50'