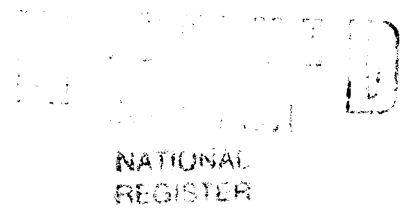


United States Department of the Interior National Park Service

National Register of Historic Places Registration Form



This form is for use in nominating or requesting determinations of eligibility for individual properties or districts. See instructions in Guidelines for Completing National Register Forms (National Register Bulletin 16). Complete each item by marking "x" in the appropriate box or by entering the requested information. If an item does not apply to the property being documented, enter "N/A" for "not applicable." For functions, styles, materials, and areas of significance, enter only the categories and subcategories listed in the instructions. For additional space use continuation sheets (Form 10-900a). Type all entries.

1. Name of Property

historic name First National Bank other names/site number

2. Location

street & number 101 S. Jefferson not for publication city, town Mount Pleasant vicinity state Iowa code IA county Henry code 087 zip code 52641

3. Classification

Ownership of Property: [X] private, [] public-local, [] public-State, [] public-Federal. Category of Property: [X] building(s), [] district, [] site, [] structure, [] object. Number of Resources within Property: Contributing 1, Noncontributing 0 buildings, 0 sites, 0 structures, 0 objects, Total 1.

Name of related multiple property listing: Architectural & Historical Resources of Mount Pleasant, Number of contributing resources previously listed in the National Register 0

4. State/Federal Agency Certification

As the designated authority under the National Historic Preservation Act of 1966, as amended, I hereby certify that this [X] nomination [] request for determination of eligibility meets the documentation standards for registering properties in the National Register of Historic Places and meets the procedural and professional requirements set forth in 36 CFR Part 60. In my opinion, the property [X] meets [] does not meet the National Register criteria. [] See continuation sheet. Signature of certifying official: [Signature], Date: 7/15/91, State or Federal agency and bureau: State Historical Society of Iowa

In my opinion, the property [] meets [] does not meet the National Register criteria. [] See continuation sheet. Signature of commenting or other official: _____ Date: _____ State or Federal agency and bureau: _____

5. National Park Service Certification

I, hereby, certify that this property is: [X] entered in the National Register. [] See continuation sheet. [] determined eligible for the National Register. [] See continuation sheet. [] determined not eligible for the National Register. [] removed from the National Register. [] other, (explain:)

Signature of the Keeper: [Signature], Date of Action: 9/6/91

6. Function or Use

Historic Functions (enter categories from instructions)

COMMERCE/financial institution

Current Functions (enter categories from instructions)

COMMERCE/financial institution

7. Description

Architectural Classification

(enter categories from instructions)

20th Century Revival

Classical Revival

Materials (enter categories from instructions)

foundation Limestone

walls Bedford Stone

Over Brick

roof Asphalt

other

Describe present and historic physical appearance.

This two story stone building from 1923 is located at the north end of the west side of the Square, on the southwest corner of Jefferson and Monroe Streets. Measuring 44'x79', the primary facade is the narrow end of the rectangle which faces Jefferson. The building is Neo-classical in design with a temple front. The tri-partite facade features a central door flanked by monumental fluted Corinthian columns. Paired pilasters are found at the corners of the facade. Large windows are located between the columns and pilasters. The windows are arranged in two levels, creating the impression of a two story building, when in actuality this was designed as a single tall story. The entablature features medallions, the words "First National Bank", and is capped by a simple classical cornice. A parapet roof is located above the cornice. The large windows are continued around the corner creating a five bay secondary facade on Monroe Street. Paired pilasters are found between these windows. A side entrance has replaced the window in the center bay. The entablature, cornice, and parapet also continue along the secondary facade.

The primary and secondary elevations are of dressed ashlar limestone. The rear (west) elevation is not veneered and remains natural red brick, with segmental arched openings.

Alterations to this building include new windows, small mosaic tile panels between the windows, and aluminum canopies over the entrances. These alterations do not negate eligibility.

On the interior there have been major, but reversible, changes. Originally, the main lobby area was a large, unbroken space two stories high. At the west end, there were small offices and the vault, with a mezzanine above. The most significant change was the installation of a suspended ceiling at the mezzanine level. The original ceiling and windows can be seen from the catwalk along the north wall. When the ceiling was lowered, walls were added, dividing the lobby space into two separate areas. The interior space has a completely different feeling now than it did originally, but restoration appears possible.

8. Statement of Significance

Certifying official has considered the significance of this property in relation to other properties:

nationally statewide locally

Applicable National Register Criteria A B C D

Criteria Considerations (Exceptions) A B C D E F G

Areas of Significance (enter categories from instructions)

Architecture

Period of Significance

1923

Significant Dates

1923

Cultural Affiliation

N.A.

Significant Person

N.A.

Architect/Builder

Paul V. Hyland, Chicago, Archt
George W. Stiles, Chicago, Const. Eng.

State significance of property, and justify criteria, criteria considerations, and areas and periods of significance noted above.

This building is significant under Criterion C as a good example of a Type IV building, a Neo-classical bank design from the 1920s.

Bank buildings began appearing in this classical design early in the 20th century. By the 1920s most towns across the country boasted at least one of these "temples of finance." Many of these were tall, narrow buildings, only 20'-25' wide, which were almost overwhelmed by the monumental columns on the facade. The decision by architect Paul V. Hyland to make the Mount Pleasant bank the full 44' wide was a wise one. It produced a building with more pleasing proportions. The use of ashlar limestone for the bank was in keeping with the style, but it also was visually effective, because it became the only stone building fronting on the Square.

The First National Bank was a dramatic departure from the architecture seen around the Square. Not only was it the only non-brick building, it did not follow the standard divisions of commercial design: storefront, upper level windows, cornice. It looked much more like a public building than a place to do business. There can be no doubt that the design of this building was based not only on what was considered appropriate for a bank building of the period, but also by the presence of the Henry County Courthouse on the far diagonal corner of the Square.

A First National Bank building has been on this site since the 1860s. The original was a single storefront wide (c.22'), and was built in the popular Italianate style. In the early 20th century there were four bank buildings located on the north part of the Square: The Henry County Savings Bank and National State Bank at the northeast corner (Main and Monroe); and the First National Bank and Farmers and Merchants Savings Bank at the northwest corner (Jefferson and Monroe). Of these, only the First National Bank building is still in use as a bank. The Farmers and Merchants building has been greatly altered and is not eligible for the National Register. The other three are being nominated.

See continuation sheet

9. Major Bibliographical References

Mt. Pleasant Daily News, 13 Dec 1923, front page.

Historic photographs.

Original plans by Paul V. Hyland

See continuation sheet

Previous documentation on file (NPS):

- preliminary determination of individual listing (36 CFR 67) has been requested
- previously listed in the National Register
- previously determined eligible by the National Register
- designated a National Historic Landmark
- recorded by Historic American Buildings Survey # _____
- recorded by Historic American Engineering Record # _____

Primary location of additional data:

- State historic preservation office
- Other State agency
- Federal agency
- Local government
- University
- Other

Specify repository: _____

10. Geographical Data

Acreage of property Less than an acre.

UTM References:

A

1	5	6	2	1	6	1	0	4	5	3	5	8	3	0
Zone			Easting					Northing						

B

Zone			Easting					Northing						

C

Zone			Easting					Northing						

D

Zone			Easting					Northing						

See continuation sheet

Verbal Boundary Description

N 44' Lot 5, Blk 5, Original Town, City of Mount Pleasant.

See continuation sheet

Boundary Justification

This is the area historically associated with this resource.

See continuation sheet

11. Form Prepared By

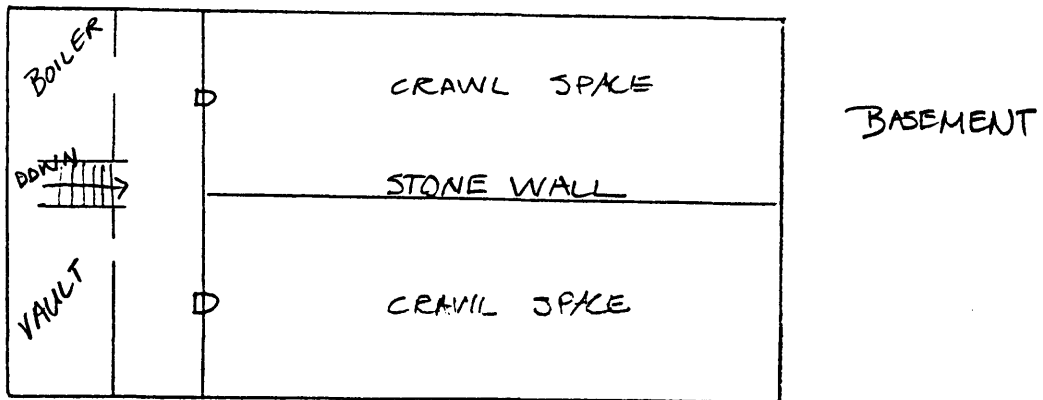
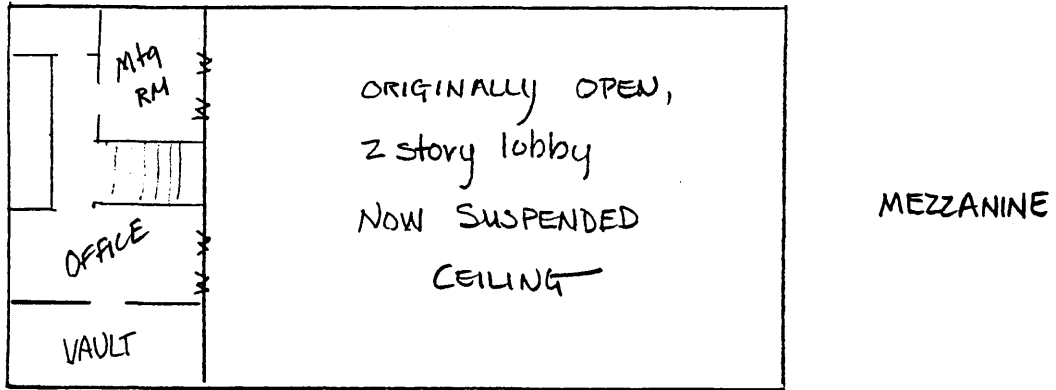
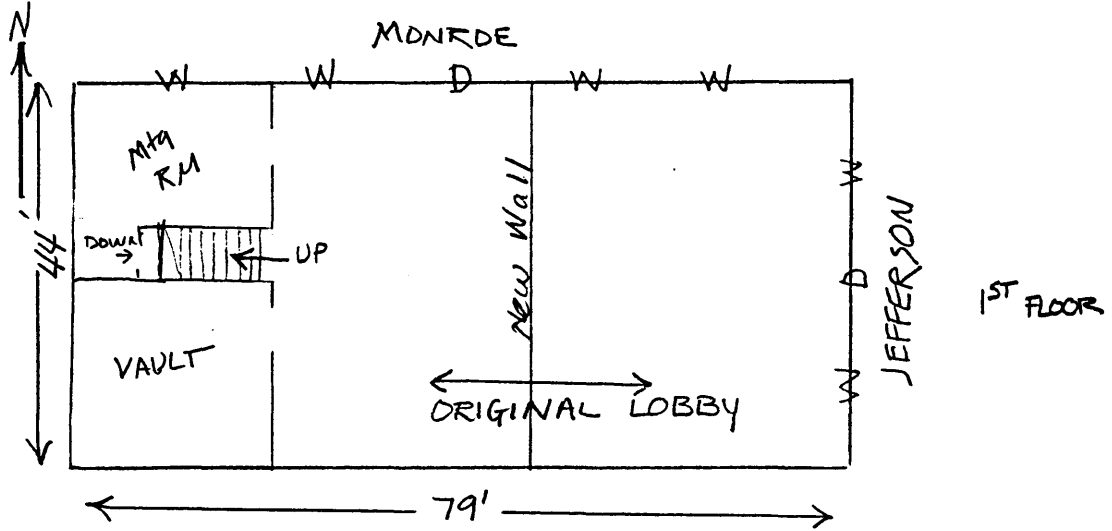
name/title Molly Myers Naumann, Consultant (515) 682-2743
organization City of Mount Pleasant date May 1991
street & number City Hall, 202 W. Monroe telephone (319) 385-1470
city or town Mount Pleasant state IA zip code 52641

United States Department of the Interior
National Park Service

National Register of Historic Places
Continuation Sheet

Section number 7 Page 2

CFN-259-1116

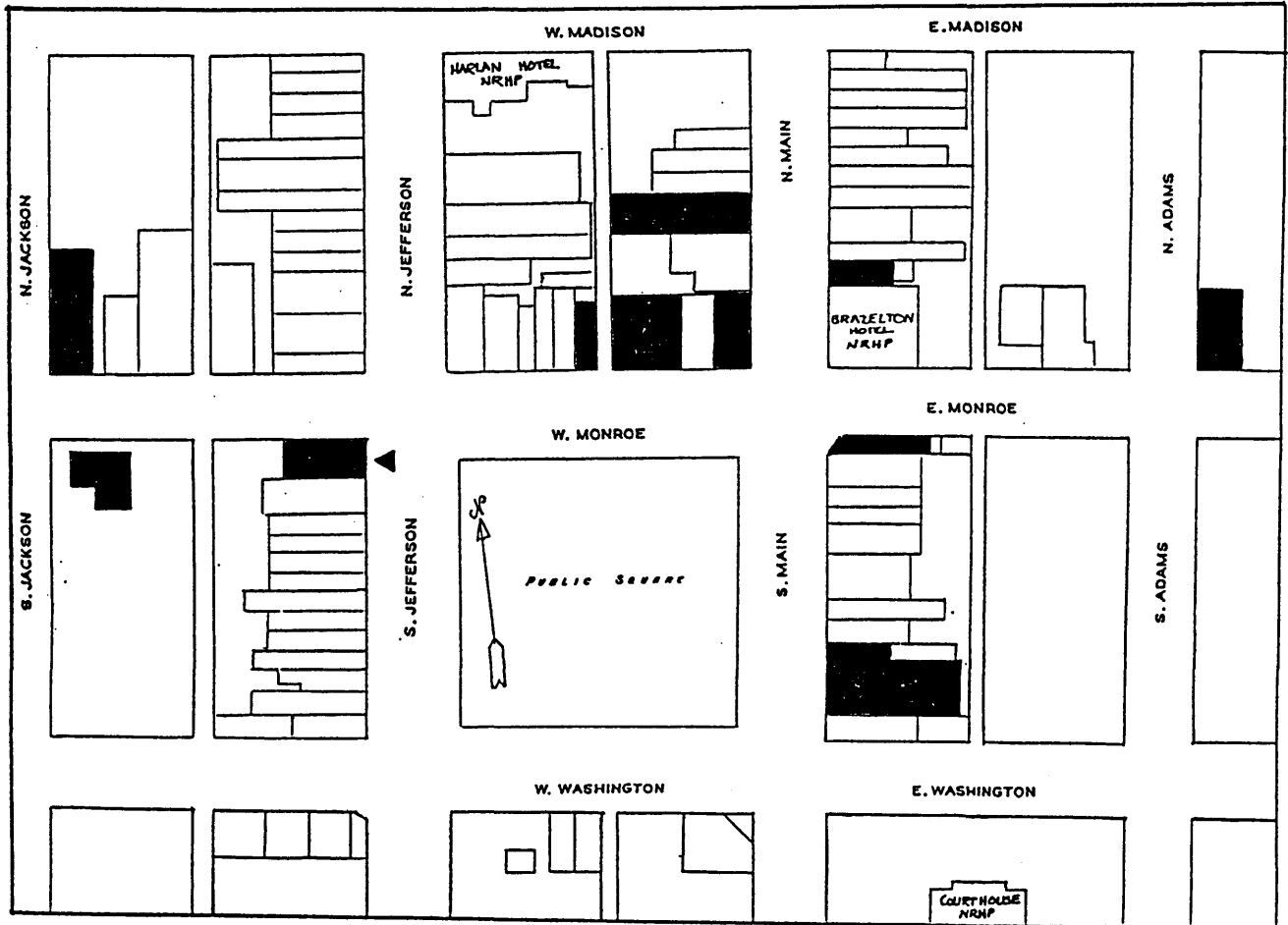


United States Department of the Interior
National Park Service

National Register of Historic Places
Continuation Sheet

Section number 7 Page 3

CFN-259-1116



MOUNT PLEASANT PUBLIC SQUARE

Shaded buildings are those being nominated.

▶ indicates specific building being nominated.

United States Department of the Interior
National Park Service

National Register of Historic Places Continuation Sheet

Section number _____ Photo _____ Page 1

CFN-259-1116

