

UNITED STATES DEPARTMENT OF THE INTERIOR
NATIONAL PARK SERVICE

FOR NPS USE ONLY

RECEIVED

JUN 14 1979

DATE ENTERED

AUG 10 1979

NATIONAL REGISTER OF HISTORIC PLACES
INVENTORY -- NOMINATION FORMSEE INSTRUCTIONS IN *HOW TO COMPLETE NATIONAL REGISTER FORMS*
TYPE ALL ENTRIES -- COMPLETE APPLICABLE SECTIONS**1 NAME**

HISTORIC

The Hotel Pines

AND/OR COMMON

2 LOCATION

STREET & NUMBER

Northwest Corner Main Street & West 5th Ave.

NOT FOR PUBLICATION

CITY, TOWN

CONGRESSIONAL DISTRICT

Pine Bluff

VICINITY OF

STATE

CODE

COUNTY

CODE

Arkansas

05

Jefferson

3 CLASSIFICATION

CATEGORY

☐ DISTRICT☒ BUILDING(S)☐ STRUCTURE☐ SITE☐ OBJECT

OWNERSHIP

☐ PUBLIC☒ PRIVATE☐ BOTH

PUBLIC ACQUISITION

☐ IN PROCESS☐ BEING CONSIDERED

STATUS

☒ OCCUPIED partially☐ UNOCCUPIED☐ WORK IN PROGRESS

ACCESSIBLE

☒ YES: RESTRICTED☐ YES: UNRESTRICTED☐ NO

PRESENT USE

☐ AGRICULTURE☐ MUSEUM☒ COMMERCIAL☐ PARK☐ EDUCATIONAL☐ PRIVATE RESIDENCE☐ ENTERTAINMENT☐ RELIGIOUS☐ GOVERNMENT☐ SCIENTIFIC☐ INDUSTRIAL☐ TRANSPORTATION☐ MILITARY☐ OTHER:**4 OWNER OF PROPERTY**

NAME

Pine Bluff Hotel Company

STREET & NUMBER

% John Harris Jones, 616 National Building

CITY, TOWN

STATE

Pine Bluff

VICINITY OF

Arkansas 71601

5 LOCATION OF LEGAL DESCRIPTION

COURTHOUSE,

REGISTRY OF DEEDS, ETC.

Circuit Clerk's Office, Jefferson County Courthouse

STREET & NUMBER

1800 East Harding Ave.

CITY, TOWN

STATE

Pine Bluff

Arkansas 71601

6 REPRESENTATION IN EXISTING SURVEYS

TITLE

DATE

☐ FEDERAL ☐ STATE ☐ COUNTY ☐ LOCALDEPOSITORY FOR
SURVEY RECORDS

CITY, TOWN

STATE

7 DESCRIPTION

CONDITION

☐ EXCELLENT
☐ GOOD
☒ FAIR

☐ DETERIORATED
☐ RUINS
☐ UNEXPOSED

CHECK ONE

☐ UNALTERED
☒ ALTERED

CHECK ONE

☒ ORIGINAL SITE
☐ MOVED DATE _____

DESCRIBE THE PRESENT AND ORIGINAL (IF KNOWN) PHYSICAL APPEARANCE

The Hotel Pines is a six storey U-shaped structure with a two-storey pile infilling the open "U". On the front (east) elevation is a three-bay portico with a full entablature supported by four sets of coupled Ionic columns. The legs of the "U" have storefronts on the street level. The second storey is divided from the first and third by stone belt courses. A balcony is centered on each leg at the third floor belt course. Each leg is divided into three bays by pilasters which rise from the third floor belt-course to a flat cornice. The cornice divides the fifth floor from the sixth. A pilaster rises from the cornice to a more narrow cornice above the sixth floor. Above this cornice-line are iron covered attic air-vents. The building is topped by a dentiled and bracketed box cornice. The corners of the legs appear as pilasters; they are capiteled at the attic line. Capitals are composed of stone tablets hung with garlands and are connected by a fluted band.

Interior

Ceilings on the first floor entrance are coffered and supported by a full entablature mounted on pink marbleized columns. The entablature contains dentils and ogee mold. Column capitals are decorated with an egg and dart mold. The lobby is a barrel vault supported by grey marble columns and pilasters. The ceiling is a curved lead stained-glass sky-light. The glass is multi-colored.

A second storey balcony encircles the lobby. Vault lines are decorated with round plaster motifs. Their centers contain electric lamps. The balcony opens to the center space through wide arches divided into three parts. Over the main entrance to the lobby is a bowed balcony supported by a large decorative bracket. Walls are finished in grey marble and floors are mosaic ceramic tile.

8 SIGNIFICANCE

PERIOD	AREAS OF SIGNIFICANCE -- CHECK AND JUSTIFY BELOW			
<input type="checkbox"/> PREHISTORIC	<input type="checkbox"/> ARCHEOLOGY-PREHISTORIC	<input type="checkbox"/> COMMUNITY PLANNING	<input type="checkbox"/> LANDSCAPE ARCHITECTURE	<input type="checkbox"/> RELIGION
<input type="checkbox"/> 1400-1499	<input type="checkbox"/> ARCHEOLOGY-HISTORIC	<input type="checkbox"/> CONSERVATION	<input type="checkbox"/> LAW	<input type="checkbox"/> SCIENCE
<input type="checkbox"/> 1500-1599	<input type="checkbox"/> AGRICULTURE	<input checked="" type="checkbox"/> ECONOMICS	<input type="checkbox"/> LITERATURE	<input type="checkbox"/> SCULPTURE
<input type="checkbox"/> 1600-1699	<input checked="" type="checkbox"/> ARCHITECTURE	<input type="checkbox"/> EDUCATION	<input type="checkbox"/> MILITARY	<input type="checkbox"/> SOCIAL/HUMANITARIAN
<input type="checkbox"/> 1700-1799	<input type="checkbox"/> ART	<input type="checkbox"/> ENGINEERING	<input type="checkbox"/> MUSIC	<input type="checkbox"/> THEATER
<input type="checkbox"/> 1800-1899	<input checked="" type="checkbox"/> COMMERCE	<input type="checkbox"/> EXPLORATION/SETTLEMENT	<input type="checkbox"/> PHILOSOPHY	<input type="checkbox"/> TRANSPORTATION
<input checked="" type="checkbox"/> 1900-	<input type="checkbox"/> COMMUNICATIONS	<input type="checkbox"/> INDUSTRY	<input type="checkbox"/> POLITICS/GOVERNMENT	<input type="checkbox"/> OTHER (SPECIFY)
		<input type="checkbox"/> INVENTION		

SPECIFIC DATES 1910-1913

BUILDER/ARCHITECT George R. Mann, St. Louis
Contractors/Monk & Ritchie, Pine Bluff

STATEMENT OF SIGNIFICANCE

The Hotel Pines is a large and architecturally significant building that is embellished with classical detailing. It was built in 1912 in an effort to bring more business to the section of Main Street in Pine Bluff, Arkansas, that lay south of the city's railroad tracks. It was successful to that end. The Hotel Pines was also the largest and finest hotel in Pine Bluff.

On July 21, 1910, a group of prominent Pine Bluff citizens organized a company to build a large, first-class hotel at the corner of West Fifth and Main Streets in downtown Pine Bluff. The group adopted the name of the Pine Bluff Hotel Company and authorized an issue of \$250,000 in capital stock.

The need for a major hotel which would be located on Main Street south of the Cotton Belt and Missouri-Pacific railroad tracks had been recognized for some time. The railroad tracks cut across Main Street near its intersections with Third and Fourth Streets. The area north of the tracks was a thriving commercial area, but the land south of the tracks had not been developed to its full business potential. The owner's of the Main Street property which was located south of the railroad tracks believed that the presence of a modern hotel would lure business south of the tracks. They reasoned that an influx of new business would increase the value of their property.

Architect George R. Mann was hired to design the new hotel. Mann was a St. Louis architect who designed some of Arkansas' most significant buildings. Among these structures are the Arkansas State Capitol Building (1911) and the Hotel Marion (1905). Both are located in Little Rock, and both are currently listed on the National Register of Historic Places. The Monk and Ritchie firm of Pine Bluff was contracted to build the hotel. Stone work was subcontracted to the E. L. Rogers Company of Little Rock.

Paul M. Heerwagen of Fayetteville, Arkansas, was hired to decorate the interior of the hotel. Heerwagen had previously worked on such hotels as the Gay-Teague in Montgomery, Alabama; the Piedmont in Atlanta, Georgia; the Bentley in Alexandria, Louisiana; the Galvez in Galveston, Texas; and the Marion in Little Rock. Heerwagen redecorated the lobby and the mezzanine of the Hotel Pines in 1928.

Three hundred fifty thousand dollars was spent for the construction of the Hotel Pines. Many of Pine Bluff's leading citizens were stockholders in the venture. The largest stockholder was the Cotton Belt Bank, which bought three-hundred

9 MAJOR BIBLIOGRAPHICAL REFERENCES

Pine Bluff Commercial, October 15, November 6, 7, 1912.

Pine Bluff Graphic, July 22, 1910, July 8, 9, 23, 1912, December 29, 1912.

Pine Bluff Press-Eagle, October 3, 10, 17, 1911.

10 GEOGRAPHICAL DATA

ACREAGE OF NOMINATED PROPERTY less than one acre

QUADRANGLE NAME Pine Bluff Quadrangle

QUADRANGLE SCALE 1: 24,000

UTM REFERENCES

A 15 59 17 80 37 87 36 0

ZONE EASTING NORTHING

C

E

G

B

ZONE EASTING NORTHING

D

F

H

VERBAL BOUNDARY DESCRIPTION

Lot Four, Block Sixty-three (63) of Woodruff's Addition, West and South,
to the City of Pine Bluff, Jefferson County, Arkansas

LIST ALL STATES AND COUNTIES FOR PROPERTIES OVERLAPPING STATE OR COUNTY BOUNDARIES

STATE	CODE	COUNTY	CODE
-------	------	--------	------

STATE	CODE	COUNTY	CODE
-------	------	--------	------

11 FORM PREPARED BY

NAME / TITLE #7 - Frezil Miller

#8 - Written by Mike Shinn, Historical Research - Jim Leslie

ORGANIZATION

Ark. Historic Preservation Program

DATE

4/20/79

STREET & NUMBER

Suite 500, Continental Bldg., Main & Markham

TELEPHONE

501-371-2763

CITY OR TOWN

Little Rock

STATE

Arkansas

12 STATE HISTORIC PRESERVATION OFFICER CERTIFICATION

THE EVALUATED SIGNIFICANCE OF THIS PROPERTY WITHIN THE STATE IS:

NATIONAL

STATE

LOCAL X

As the designated State Historic Preservation Officer for the National Historic Preservation Act of 1966 (Public Law 89-665), I hereby nominate this property for inclusion in the National Register and certify that it has been evaluated according to the criteria and procedures set forth by the National Park Service.

STATE HISTORIC PRESERVATION OFFICER SIGNATURE Joan Baldrige

TITLE State Historic Preservation Officer

DATE May 22, 1979

FOR NPS USE ONLY

I HEREBY CERTIFY THAT THIS PROPERTY IS INCLUDED IN THE NATIONAL REGISTER

KEEPER OF THE NATIONAL REGISTER Carol Shull

ATTEST: Carol Shull
CHIEF OF REGISTRATION

DATE 8-10-79

DATE 8/9/79

UNITED STATES DEPARTMENT OF THE INTERIOR
NATIONAL PARK SERVICE

**NATIONAL REGISTER OF HISTORIC PLACES
INVENTORY -- NOMINATION FORM**

FOR NPS USE ONLY	
RECEIVED	JUN 14 1979
DATE ENTERED	AUG 10 1979

CONTINUATION SHEET

ITEM NUMBER 8 PAGE 1

shares of stock. For a number of years the offices of the bank were located on the first floor of the Hotel Pines.

The construction of the Hotel Pines was not without incident. Quicksand was discovered on the construction site, and the problems it caused in laying the foundation of the building created a lengthy delay. On July 22, 1912, one of the workmen was killed when he fell six stories from the roof.

The Pine Bluff Hotel Company did not attempt to operate the Hotel Pines, rather it leased the building to the firm of Storm and Watson. Members of the firm had previous experience with Hotel Adolphus in Dallas.

The hotel was officially opened on November 6, 1913. In the banquet hall, which was decorated with pine clusters, Arkansas Governor George W. Hays delivered the principle address. During its years of service, the Hotel Pines was the major hotel in Pine Bluff and was one of the finest hotels in Arkansas.

The Hotel Pines operated continuously until 1970, at which time it closed. According to Walter N. Trulock, Jr., the son of a former manager of the hotel, the Pines never paid a dividend on its stock. The controlling stock in the hotel was sold in 1971 to a group of Pine Bluff investors. The building is currently vacant, but plans for its reuse have been drawn.

The Hotel Pines is a classically detailed, six-storey, brick structure. The hotel is U-shaped. A two-storey pile infills the open, central part of the building. This central section of the hotel is the middle part of the building's U-shape. A three-bay portico with full entablature is located on the front (east) elevation of the hotel. This entablature is supported by four sets of coupled Ionic columns. The second storey is divided from the first and third stories by stone belt courses. The upper four floors (or shaft) of each wing of the building's U-shape are identically detailed. A balcony is centered in the facade of each wing on line with the third storey belt course. The facades of both wings are divided by pilasters into three bays. These pilasters rise from the third storey belt course to a flat cornice which divides the fifth from the sixth floors. A more narrow cornice is positioned above the sixth floor. A third cornice, which is a dentiled and bracketed box cornice, is located below the flat roof-line of the hotel. The first floor of the building contains plate-glass storefronts.

The ceilings of the hotel's first floor entrance are coffered and are supported by a full entablature that is mounted on pink marbleized columns. The lobby is a barrel vault which is supported by grey marble columns and pilasters. The ceiling is a sky-light that is composed of curved lead stained-glass.

UNITED STATES DEPARTMENT OF THE INTERIOR
NATIONAL PARK SERVICE

**NATIONAL REGISTER OF HISTORIC PLACES
INVENTORY -- NOMINATION FORM**

FOR NPS USE ONLY	
RECEIVED JUN 14 1979	
DATE ENTERED	AUG 10 1979

CONTINUATION SHEET

ITEM NUMBER 8

PAGE 2

The stained glass is multi-colored.

A second storey balcony encircles the lobby. It opens to the lobby through wide arches which are divided into three parts. Vault lines in the ceiling are decorated with round plaster motifs that contain electric lamps. The walls of the lobby are finished in grey marble, and the floors of the lobby are mosaic ceramic tile.

Property

Hotel Pines

State

Ark. (Jefferson)

Working Number

6.14.79.1447

79000443

TECHNICAL

Photos 1Maps 1

CONTROL

OK 6.14.79

#8 tries to make a case for local significance based on this Hotel having attracted business to south section of Main Street, Pine Bluff. Although there may be such significance, it is not clearly supported in this nomination. Assume architectural significance. Defer to AH.

HISTORIAN

Sheffield
8-7-79

Another architectural description was provided in ARCHITECTURAL HISTORIAN #8, but neither describe the alterations. From the photograph, the exterior alteration appears to have been confined to the first floor fenestration and could be remedied. This large, classically detailed building housed the largest and finest hotel in the city at one time.

Cale Brooks
8/9/79

ARCHEOLOGIST

OTHER

HAER

Inventory _____

Review _____

Though an adequate case was not made for economic significance, the building's local architectural significance is clear. The building is currently vacant, but plans have been drawn for its reuse.

REVIEW UNIT CHIEF

Accept
Cale Brooks
8/9/79

BRANCH CHIEF

KEEPER

National Register Write-up

Federal Register Entry

9-4-79

Send-back _____

Re-submit _____

Entered AUG 10 1979



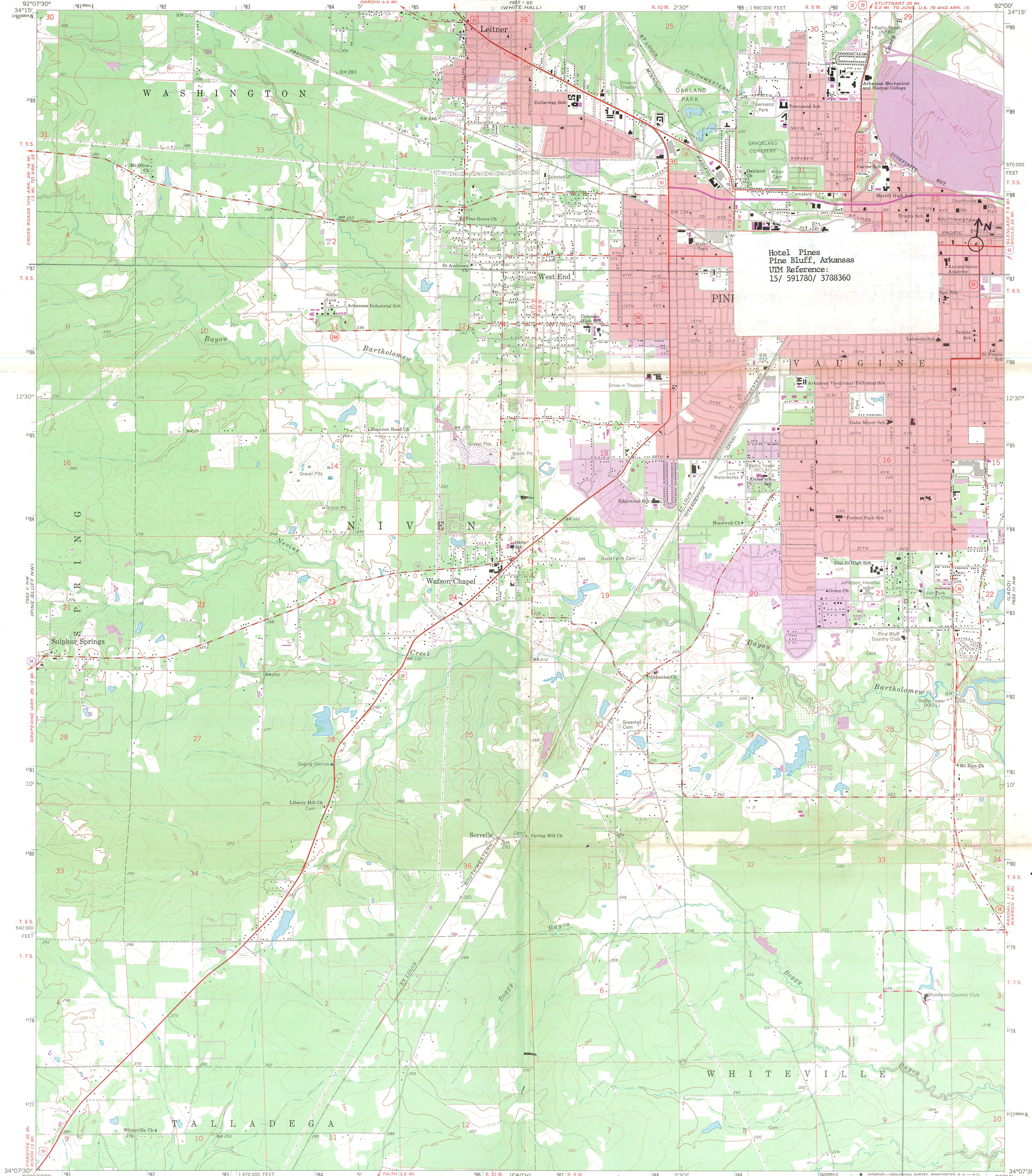
Hotel Pines
Pine Bluff, Arkansas, *Tefferson County, Ark.*
Bob Dunn
1979
view from the southeast
#1 *41*

DOE
AUG 10 1979

JUN 14 1979

UNITED STATES
DEPARTMENT OF THE INTERIOR
GEOLOGICAL SURVEY

PINE BLUFF QUADRANGLE
ARKANSAS—JEFFERSON CO.
7.5 MINUTE SERIES (TOPOGRAPHIC)



Hotel Pines
Pine Bluff, Arkansas
UTM Reference:
15/ 591780/ 3788360

Maped, edited, and published by the Geological Survey
Control by USGS and USC&GS
Planimetry by photogrammetric methods from aerial photographs
taken 1961. Topography by planetable surveys 1961-62
Polyconic projection. 1927 North American datum
10,000-foot grid based on Arkansas coordinate system, south zone
1000-meter Universal Transverse Mercator grid ticks,
zone 15, shown in blue
Red tint indicates areas in which only landmark buildings are shown
Fine red dashed lines indicate selected fence and field lines where
generally visible on aerial photographs. This information is unchecked
Revisions shown in purple compiled from aerial photographs
taken 1971. This information not field checked
Purple tint indicates extension of urban areas

UTM GRID AND 1971 MAGNETIC NORTH
DECLINATION AT CENTER OF SHEET

SCALE 1:24 000

CONTOUR INTERVAL 10 FEET
DOTTED LINES REPRESENT 5-FOOT CONTOURS
DATUM IS MEAN SEA LEVEL

THIS MAP COMPLIES WITH NATIONAL MAP ACCURACY STANDARDS
FOR SALE BY U.S. GEOLOGICAL SURVEY, DENVER, COLORADO 80225, OR WASHINGTON, D. C. 20242
AND BY THE ARKANSAS GEOLOGICAL COMMISSION, LITTLE ROCK, ARKANSAS 72201
A FOLDER DESCRIBING TOPOGRAPHIC MAPS AND SYMBOLS IS AVAILABLE ON REQUEST

ROAD CLASSIFICATION

Heavy-duty	Light-duty
Medium-duty	Unimproved dirt
U. S. Route	State Route

RECEIVED
JUN 14 1979
NATIONAL
REGISTER
AUG 10 1979

QUADRANGLE LOCATION

PINE BLUFF, ARK.
N 3407.5—W 9200.7/5
1962
PHOTOREVISED 1971
AMS 7552 II NE—SERIES V 884

ENTRIES IN THE NATIONAL REGISTER

STATE ARKANSAS

Date Entered AUG 10 1979

<u>Name</u>	<u>Location</u>
Jackson County Jail	Newport Jackson County
Waters, Charles Clary, House	Little Rock Pulaski County
Marshall Square Historic District	Little Rock Pulaski County
Hotel Pines	Pine Bluff Jefferson County

Also Notified

Honorable Dale Bumpers

Honorable David Pryor
Honorable Bill Alexander
Honorable Edwin Bethune
Honorable Beryl F. Anthony, Jr.

State Historic Preservation Officer
Ms. Joan Baldrige
Arkansas Historic Preservation Program
Suite 500, Continental Building
Markham and Main Streets
Little Rock, Arkansas 72201

NR Byers/bjr 8/14/79

For further information, please call the National Register at (202)343-6401.