



HARRISVILLE HISTORIC DISTRICT
PHOTO CREDIT: AASLH

Harrisville Historic District
Harrisville, N.H.

Photo No. 1

By: George R. Adams, AASLH

Negative at: HSS, NPS

Date: May 1977

View: General view from northwest on
Nelson Road. L. to R. Hutchinson
House, C.C.P. Harris House; Vestry
Library; Blacksmith Shop; Bethuel
Harris House.



HARRISVILLE HISTORIC DISTRICT
PHOTO CREDIT: AASLH

Harrisville Historic District
Harrisville, N.H.

Photo No. 2

By: George R. Adams, AASLH

Negative at: HSS, NPS

Date: May 1977

View: From north, showing L. to R.
Harris Boarding House; Cheshire Mill
No. 1, Cheshire Storehouse; Harris
Boiler House; Harris Upper Mill.



HARRISVILLE HISTORIC DISTRICT
PHOTO CREDIT: AASLH

Harrisville Historic District
Harrisville, N.H.

Photo No. 3

By: George R. Adams, AASLH

Negative at: HSS, NPS

Date: May 1977

View: From west, showing L. to R.
Cheshire New (1922) Mill; Cheshire
Picker House; Cheshire Mill No. 1
(Granite or Lower Mill); Cheshire
Mill No. 2.



HARRISVILLE HISTORIC DISTRICT
PHOTO CREDIT: AASLH

Harrisville Historic District
Harrisville, N.H.

Photo No. 4

By: George R. Adams, AASLH

Negative at: HSS, NPS

Date: May 1977

View: From east, showing south side
and front (east) facade of Eagle
Hall and General Store (Clark's
Country Store).



HARRISVILLE HISTORIC DISTRICT
PHOTO CREDIT: AASLH

Harrisville Historic District
Harrisville, N.H.

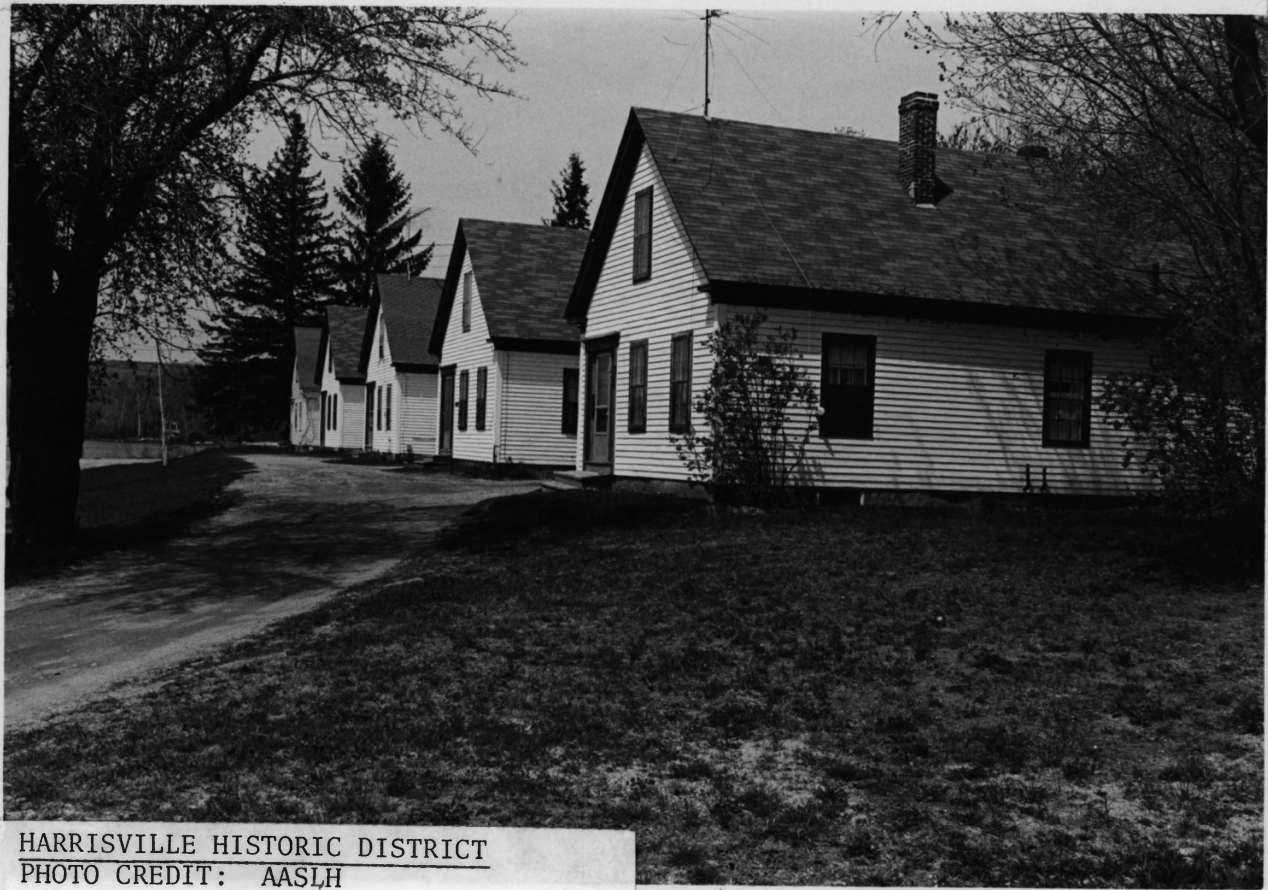
Photo No. 5

By: George R. Adams, AASLH

Negative at: HSS, NPS

Date: May 1977

View: From north, showing, L. to R.
south (front) side of Cyrus Harris-
Henry Colony House; West end and
south side of Milan Harris House;
west end of Harris Boarding House.



HARRISVILLE HISTORIC DISTRICT
PHOTO CREDIT: AASLH

Harrisville Historic District
Harrisville, N.H.

Photo No. 6
By: George R. Adams, AASLH
Negative at: HSS, NPS
Date: May 1977

View: From south along Pond Street,
showing Peanut Row Cheshire Mills
Worker's Houses.