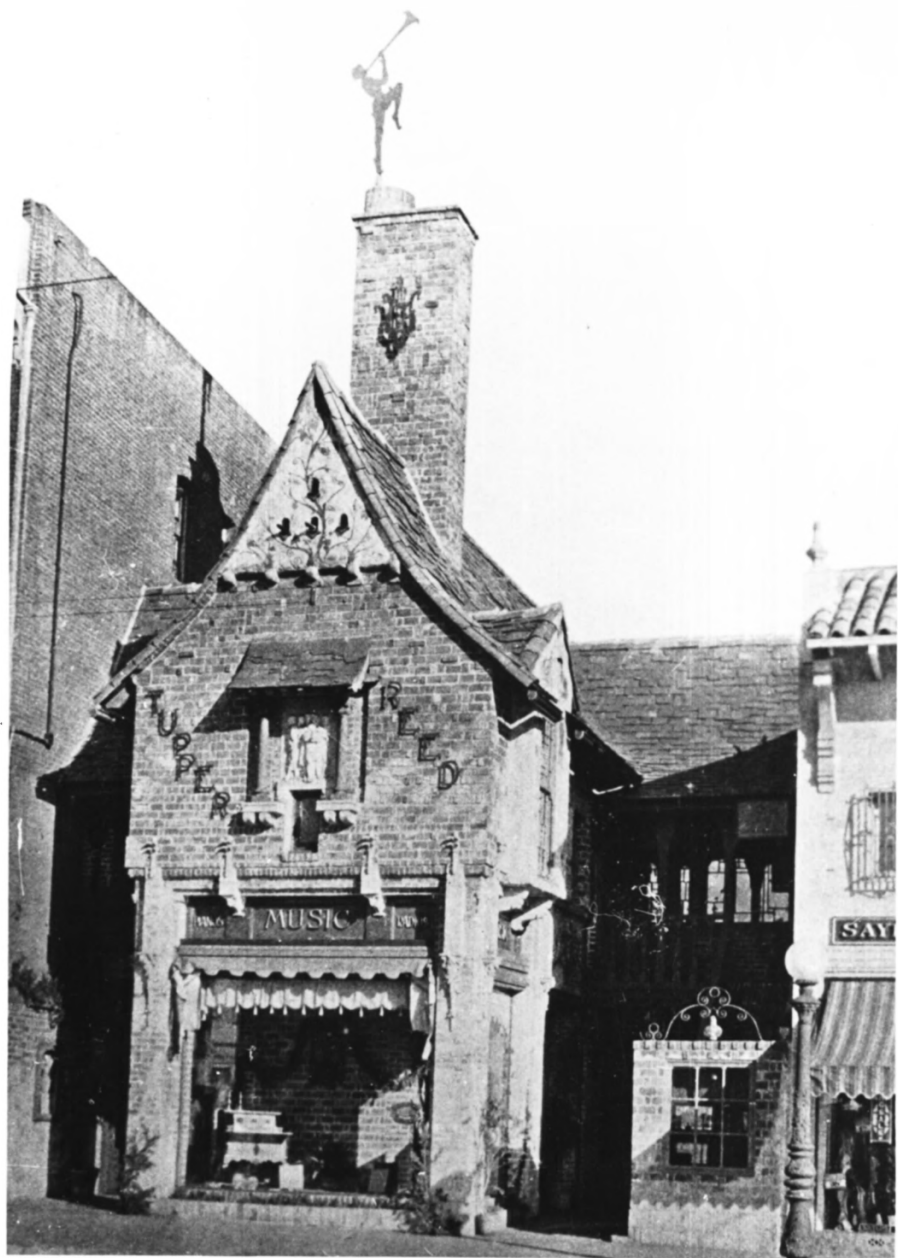


JAN 21 1982

DEC 22 1981

TUPPER & REED BLDG. ①, 2275 Shattuck Ave.  
Berkeley CAL 94704; west facade, view E  
1977; Betty Marvin, 2646 Claremont 94701



DEC 22 1981

JAN 21 1982

TUPPER & REED BLDG., 2275 Shattuck Ave.  
Berkeley CAL 94704; west facade, view E.  
1925 photo Architect & Engineer Nov '25  
② copy neg: B. Marvin, 2646 Claremont 94705



TUPPER & REED BLDG., 2275 Shattuck Ave.  
Berkeley, Cal. 94704; west facade, view E.  
1925 photo: Robin Yelland Gentile; copy  
neg: Candace Tolbert, 1853 Ashby 94703

③

DEC 22 1981

JAN 21 1982



JAN 21 1982

DEC 22 1981

TUPPER & REED BLDG., 2275 Shattuck Ave.  
Berkeley CAL 94704; courtyard, view NE.

1977 photo: Betty Marvin, 2646 Clare-

mont Avenue, Berkeley 94705

④





JAN 21 1982 DEC 22 1981

TUPPER & REED BLDG., 2275 Shattuck Ave.  
Berkeley, Cal. 94704; bldg. & its sur-  
roundings, view looking NE; c. 1935 phot.  
courtesy Louis Stein 360 Rugby 94708; (5)  
from Berkeley The Town & Gown Of It,  
1973 by George Pettit. Copy neg: Betty  
Marvin, 2646 Claremont, Berkeley 94705