



# The Kentucky Heritage Commission

Name Seminary Square Historic District

Location Covington, Kenton County, Kentucky

Photographer Jayne C. Henderson

MAY 27 1980

Date Taken January 1980

Negative Location Ky. Heritage Comm.-Frankfort, Ky.

View Photo 1--Russell St. West side between Robbins

and Eleventh streets. MAR 31 1980

1/47



# The Kentucky Heritage Commission

Name Seminary Square Historic District

Location Covington, Kenton County, Kentucky

Photographer Jayne C. Henderson

Date Taken January 1980

Negative Location Ky. Heritage Commission-Frankfort,  
Kentucky

View Photo 2--~~Ru~~ssell Street west side--between

Ninth and ~~T~~enth streets.

MAY 27 1980  
MAR 31 1980

2/47





# The Kentucky Heritage Commission

Name Seminary Square Historic District

Location Covington, Kenton County, Kentucky

Photographer Jayne C. Henderson MAY 27 1980

Date Taken January 1980

Negative Location Ky. Heritage Comm.-Frankfort, Ky.

View Photo 3--Banklick St.-east side between

Eleventh and Twelfth streets.

MAR 31 1980

3/47



# The Kentucky Heritage Commission

Name Seminary Square Historic District

Location Covington, Kenton County, Kentucky

Photographer Jayne C. Henderson MAY 27 1980

Date Taken January 1980

Negative Location Ky. Heritage Comm.-Frankfort, Ky.

View Photo 4. Banklick St.-east side between Robbins  
and Eleventh streets.

MAR 31 1980

4/47



# The Kentucky Heritage Commission

Name Seminary Square Historic District

Location Covington, Kenton County, Kentucky

Photographer Jayne C. Henderson

MAY 27 1980

Date Taken January 1980

Negative Location Ky. Heritage Comm.--Frankfort, Ky.

View Photo 5. Eleventh Street--north side east of  
Russell Street.

5/47

MAR 31 1980



# The Kentucky Heritage Commission

Name Seminary Square Historic District

Location Covington, Kenton County, Kentucky

Photographer Jayne C. Henderson

MAY 27 1980

Date Taken January 1980

Negative Location Ky. Heritage Comm.--Frankfort, Ky.

View Photo 6. Alfred Sanford House--1026 Russell St.,

taken from the west.

6 (4)

MAR 31 1980





# The Kentucky Heritage Commission

Name Seminary Square Historic District

Location Covington, Kenton County, Kentucky

Photographer Jayne C. Henderson MAY 27 1980

Date Taken January 1980

Negative Location Ky. Heritage Comm.--Frankfort, Ky.

View Photo 7. Alfred Sanford House--entrance  
detail--taken from the west.

7/47



# The Kentucky Heritage Commission

Name Seminary Square Historic District

Location Covington, Kenton County, Kentucky

Photographer Jayne C. Henderson

Date Taken January 1980

Negative Location Ky. Heritage Comm.-Frankfort, Ky.

View Photo 8. Alfred Sanford House--side

entrance detail taken from the west.

MAY 27 1980  
MAR 31 1980  
8/47



# The Kentucky Heritage Commission

Name Seminary Square Historic District

Location Covington, Kenton County, Kentucky

Photographer Jayne C. Henderson ~~MAY 27 1980~~

Date Taken January 1980

Negative Location Ky. Heritage Comm.--Frankfort, Ky.

View Photo 9. W. E. Ashbrook House--1010 Russell St.

taken from the southwest.

MAR 31 1980

9/47



# The Kentucky Heritage Commission

Name Seminary Square Historic District

Location Covington, Kenton County, Kentucky

Photographer Jayne C. Henderson

Date Taken January 1980 MAY 27 1980

Negative Location Ky. Heritage Comm.-Frankfort, Ky.

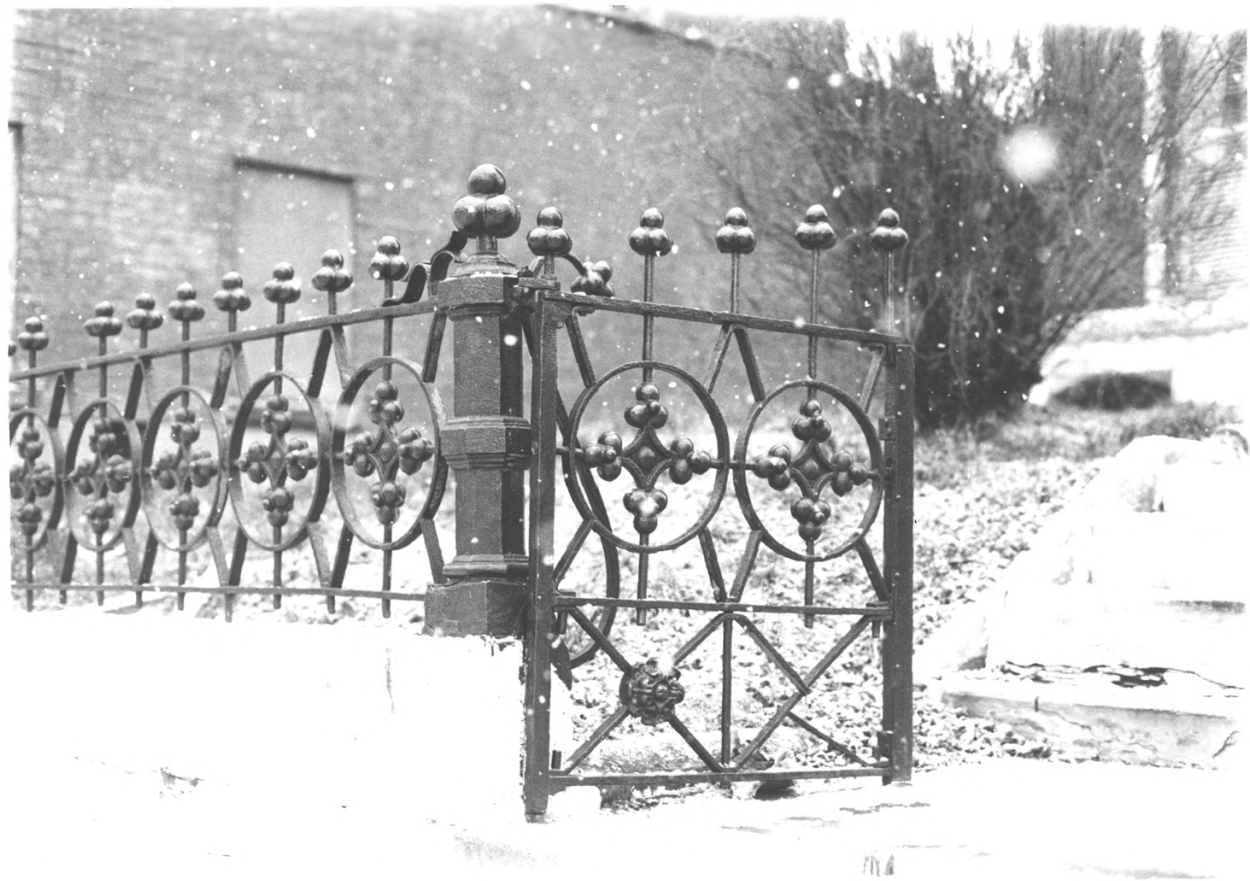
View Photo 10 W. E. Ashbrook House--entrance detail

taken from the west.

MAR 31 1980

10/47





# The Kentucky Heritage Commission

Name Seminary Square Historic District

Location Covington, Kenton County, Kentucky

Photographer Jayne C. Henderson

Date Taken January 1980 MAY 27 1980

Negative Location Ky. Heritage Comm.-Frankfort, Ky.

View Photo 11. W. E. Ashbrook House--iron fence

detail.

MAR 31 1980

11/47



# The Kentucky Heritage Commission

Name Seminary Square Historic District

Location Covington, Kenton County, Kentucky

Photographer Jayne C. Henderson

Date Taken January 1980

Negative Location Ky. Heritage Comm.-Frankfort, Ky.

*Harriet Albro House*

View Photo 12. ~~John Fisk House~~--entrance detail.

MAR 31 1980

12/47

*correction verified in  
telephone conversation with  
J. Henderson 5/14/80*

1011



# The Kentucky Heritage Commission

Name Seminary Square Historic District

Location Covington, Kenton County, Kentucky

Photographer Jayne C. Henderson

Date Taken January 1980

Negative Location Ky. Heritage Comm.-Frankfort, Ky.

View Photo 13. <sup>Harnett Albro house, 1041</sup> ~~John Fisk House, 1017~~ Russell St.--

west side.

MAY 27 1980

MAR. 5. 1980

13/49

*correction see nomination form.*

*Correction verified in*

*telephone conversation with*

*J. Henderson 5/14/80*



# The Kentucky Heritage Commission

Name Seminary Square Historic District

Location Covington, Kenton County, Kentucky

Photographer Jayne C. Henderson MAY 27 1980

Date Taken January 1980

Negative Location Ky. Heritage Comm.-Frankfort, Ky.

*John Fisk House, 1017*

View Photo 14. Harriet Albro House, 1041 Russell St.-

west side.

*14/47*

MAR 31 1980

*correction verified in  
telephone conversation with  
Jane Henderson 5/17/80*





# The Kentucky Heritage Commission

Name Seminary Square Historic District

Location Covington, Kenton County, Kentucky

Photographer Jayne C. Henderson

Date Taken January 1980

Negative Location Ky. Heritage Comm.-Frankfort, Ky.

View Photo 15. <sup>John Fisk House</sup> ~~Harriet Albro House~~---Entrance detail.

MAR 31 1980

157  
/47

correction verified in telephone  
conversation with Jayne Henderson  
5/14/80



# The Kentucky Heritage Commission

Name Seminary Square Historic District

Location Covington, Kenton County, Kentucky

Photographer Jayne C. Henderson

Date Taken January 1980

MAY 27 1980

Negative Location Ky. Heritage Comm.-Frankfort, Ky.

View Photo 16. Immanuel Methodist Episcopal Church-

southeast corner of Tenth and Russell streets-  
taken from the northwest.

MAR 31 1980



# The Kentucky Heritage Commission

Name Seminary Square Historic District

Location Covington, Kenton County, Kentucky

Photographer Jayne C. Henderson

Date Taken January 1980

Negative Location Ky. Heritage Comm.-Frankfort, Ky.

View Photo 17. St. Paul's Evangelical Church--  
northeast corner of Banklick & Eleventh streets--  
taken from the south.

MAY 27 1980

MAR 31 1980

17/47





# The Kentucky Heritage Commission

Name Seminary Square Historic District

Location Covington, Kenton County, Kentucky

Photographer Jayne C. Henderson

Date Taken January 1980

MAY 27 1980

Negative Location Ky. Heritage Commission, Frankfort,  
Ky

View Photo 18. St. Paul's Evangelical Church--north-  
east corner of Banklick & Eleventh streets--taken  
from the south.

MAR 31 1980

18/47





SPEED  
LIMIT  
25

ALBA  
ELECTRIC  
889-2811

# The Kentucky Heritage Commission

Name Seminary Square Historic District

Location Covington, Kenton County, Kentucky

Photographer Jayne C. Henderson

MAY 27 1980

Date Taken January 1980

Negative Location Ky. Heritage Comm.-Frankfort, Ky.

View Photo 19. 1030-1036 Russell St.--east side

taken from the west.

19/47

MAR 31 1980



# The Kentucky Heritage Commission

Name Seminary Square Historic District

Location Covington, Kenton County, Kentucky

Photographer Jayne C. Henderson

Date Taken January 1980

Negative Location Ky. Heritage Comm.-Frankfort, Ky.

View Photo 20. 108 W. Eleventh Street--north side  
taken from the south.

MAY 27 1980

MAR 31 1980

20/47



# The Kentucky Heritage Commission

Name Seminary Square Historic District

Location Covington, Kenton County, Kentucky

Photographer Jayne C. Henderson

Date Taken January 1980      MAY 27 1980

Negative Location Ky. Heritage Comm.--Frankfort, Ky.

View Photo 21. Bob's Carry Out--southeast corner  
of Russell & Eleventh streets--taken from the  
northwest.

MAR 31 1980

21/47



# The Kentucky Heritage Commission

Name Seminary Square Historic District

Location Covington, Kenton County, Kentucky

Photographer Jayne C. Henderson

Date Taken January 1980

Negative Location Ky. Heritage Commission--Frankfort  
Ky.

View Photo 22. Bob's Carry Out--interior--  
pressed tin ceiling.

MAY 27 1980

MAR 31 1980

22/47





# The Kentucky Heritage Commission

Name Seminary Square Historic District

Location Covington, Kenton County, Kentucky

Photographer Jayne C. Henderson

Date Taken January 1980 MAY 27 1980

Negative Location Ky. Heritage Comm.-Frankfort, Ky.

View Photo 23. Best Way Dry Cleaners---southwest corner  
of Russell & Eleventh streets-taken from the  
northeast.

MAR 31 1980

23/47



# The Kentucky Heritage Commission

Name Seminary Square Historic District

Location Covington, Kenton County, Kentucky

Photographer Jayne C. Henderson

Date Taken January 1980

MAY 27 1980

Negative Location Ky. Heritage Comm.-Frankfort, Ky.

View Photo 24. 1043 Russell St.-northwest corner of

Russell & Eleventh streets--taken from the  
northeast.

MAR 31 1980

24/47



# The Kentucky Heritage Commission

Name Seminary Square Historic District

Location Covington, Kenton County, Kentucky

Photographer Jayne C. Henderson

Date Taken January 1980

MAY 27 1980

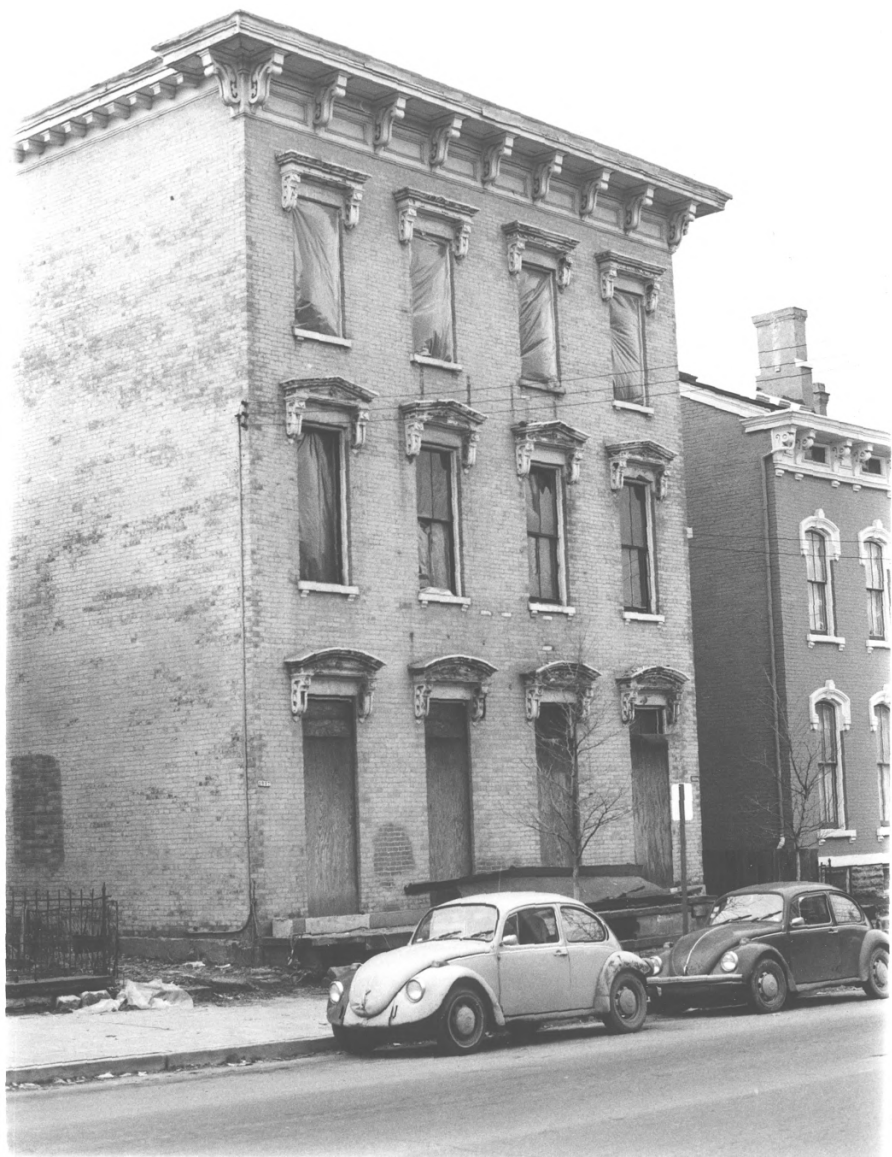
Negative Location Ky. Heritage Comm.--Frankfort, Ky.

View Photo 25. 1039 Russell St.--west side--taken  
from the east.

MAR 31 1980

257/47





# The Kentucky Heritage Commission

Name Seminary Square Historic District

Location Covington, Kenton County, Kentucky

Photographer Jayne C. Henderson

Date Taken January 1980

Negative Location Ky. Heritage Comm.-Frankfort, Ky.

View Photo26. 1035-1037 Russell St.--west side--

taken from the south.

MAY 27 1980  
MAR 31 1980

26/47





# The Kentucky Heritage Commission

Name Seminary Square Historic District

Location Covington, Kenton County, Kentucky

Photographer Jayne C. Henderson

Date Taken January 1980 MAY 27 1980

Negative Location Ky. Heritage Comm.-Frankfort, Ky.

View Photo 27. 1023 Russell St.--west side--taken  
from the east.

MAR 31 1980

27/47



# The Kentucky Heritage Commission

Name Seminary Square Historic District

Location Covington, Kenton County, Kentucky

Photographer Jayne C. Henderson

Date Taken January 1980

MAY 27 1980

Negative Location Ky. Heritage Comm.--Frankfort, Ky.

View Photo 28. 910 Russell St.--east side--taken

from the west.

MAR 31 1980

28/  
47



1128

# The Kentucky Heritage Commission

Name Seminary Square Historic District

Location Covington, Kenton County, Kentucky

Photographer Jayne C. Henderson

Date Taken January 1980 MAY 27 1980

Negative Location Ky. Heritage Comm.--Frankfort, Ky.

View Photo 29. 1130 Banklick St.--east side--taken

from the west. MAR 3 1980

29/49



# The Kentucky Heritage Commission

Name Seminary Square Historic District

Location Covington, Kenton County, Kentucky

Photographer Jayne C. Henderson

Date Taken January 1980

MAY 27 1980

Negative Location Ky. Heirtage Comm.-Frankfort, Ky.

View Photo 30. 1126-1128 Banklick St.--east side--  
taken from the west.

MAR 31 1980

30/47





# The Kentucky Heritage Commission

Name Seminary Square Historic District

Location Covington, Kenton County, Kentucky

Photographer Jayne C. Henderson ~~MAY 27 1980~~

Date Taken January 1980

Negative Location Ky. Heritage Comm.--Frankfort, Ky.

View Photo 31. 1107-1113 Banklick St.--west side--  
taken from the southeast.

~~MAR 31 1980~~

31/47



# The Kentucky Heritage Commission

Name Seminary Square Historic District

Location Covington, Kenton County, Kentucky

Photographer Jayne C. Henderson

Date Taken January 1980

MAY 27 1980

Negative Location Ky. Heritage Comm.--Frankfort, Ky.

View Photo 32. 134 W. Tenth St.--north side--taken

from the south.

MAR 31 1980

32/47



# The Kentucky Heritage Commission

Name Seminary Square Historic District

Location Covington, Kenton County, Kentucky

Photographer Jayne C. Henderson

Date Taken January 1980

MAY 27 1980

Negative Location Ky. Heritage Comm.--Frankfort, Ky.

View Photo 33. 134 W. Tenth St.--north side--

taken from the east.

MAR 31 1980

33/47



SPEED  
LIMIT  
25

# The Kentucky Heritage Commission

Name Seminary Square Historic District

Location Covington, Kenton County, Ky.

Photographer Jayne C. Henderson MAY 27 1980

Date Taken January 1980

Negative Location Ky. Heritage Comm.-Frankfort, Ky.

View Photo 34. 119 W. Tenth St.--south side--

taken from the northeast. MAR 31 1980

34/47





# The Kentucky Heritage Commission

Name Seminary Square Historic District

Location Covington, Kenton County, Kentucky

Photographer Jayne C. Henderson

Date Taken January 1980 MAY 27 1987

Negative Location Ky. Heritage Comm.--Frankfort, Ky.

View Photo 35. 117 W. Tenth St.--south side--taken  
from the north. MAR 31 1983 35/47



117

# The Kentucky Heritage Commission

Name Seminary Square Historic District

Location Covington, Kenton County, Kentucky

Photographer Jayne C. Henderson

Date Taken January 1980 MAY 27 1980

Negative Location Ky. Heritage Comm.--Frankfort, Ky.

View Photo 36.--117 W. Tenth St.--entrance detail--

taken from the north. MAY 31 1980

36/47



# The Kentucky Heritage Commission

Name Seminary Square Historic District

Location Covington, Kenton County, Kentucky

Photographer Jayne C. Henderson

Date Taken January 1980 . MAY 27 1980

Negative Location Ky. Heritage Comm. - Frankfort, Ky.

View Photo 37. 121-127 W. Robbins St.--south side-

taken from the east.

MAR 31 1980

37/47





# The Kentucky Heritage Commission

Name Seminary Square Historic District

Location Covington, Kenton County, Kentucky

Photographer Jayne C. Henderson

Date Taken January 1980

MAY 27 1980

Negative Location Ky. Heritage Comm.--Frankfort, Ky.

View Photo 38. 113, 115, 117 W. Robbins St.--south  
side--taken from the northeast.

MAR 31 1980

38/47





# The Kentucky Heritage Commission

Name Seminary Square Historic District

Location Covington, Kenton County, Kentucky

Photographer Jayne C. Henderson

Date Taken January 1980

Negative Location Ky. Heritage Comm.--Frankfort, Ky.

View Photo 39. 119 W. Eleventh St.--south side--

taken from the north.

MAY 27 1980

MAR 3, 1980

39/47



# The Kentucky Heritage Commission

Name Seminary Square Historic District

Location Covington, Kenton County, Kentucky

Photographer Jayne C. Henderson

MAY 27 1980

Date Taken January 1980

Negative Location Ky. Heritage Comm.--Frankfort, Ky.

View Photo 40. 119 W. Eleventh St.--entrance detail--

taken from the north.

MAR 31 1980

40/  
147



# The Kentucky Heritage Commission

Name Seminary Square Historic District

Location Covington, Kenton County, Kentucky

Photographer Jayne C. Henderson

Date Taken January 1980

MAY 27 1980

Negative Location Ky. Heritage Comm. Frankfort, Ky.

View Photo 41. 115 W. Eleventh St.--south side--

taken from the northwest.

MAR 31 1980

41/  
47



# The Kentucky Heritage Commission

Name Seminary Square Historic District

Location Covington, Kenton County, Kentucky

Photographer Jayne C. Henderson

Date Taken January 1980

MAY 27 1980

Negative Location Ky. Heritage Comm.-Frankfort, Ky.

View Photo 42. 115 W. Eleventh St.- iron fence detail

taken from the northwest.

MAR 31 1980

42  
47





# The Kentucky Heritage Commission

Name Seminary Square Historic District

Location Covington, Kenton County, Kentucky

Photographer Jayne C. Henderson

Date Taken January 1980 MAY 27 1980

Negative Location Ky. Heritage Comm.--Frankfort, Ky.

View Photo 43. 109 W. Eleventh St.--south side-  
taken from the north. MAR 21 1980

43  
47



ONE WAY

1877  
W. 11th

TWO WAY TRAFFIC AHEAD

# The Kentucky Heritage Commission

Name Seminary Square Historic District

Location Covington, Kenton County, Kentucky

Photographer Jayne C. Henderson

Date Taken January 1980

MAY 27 1980

Negative Location Ky. Heritage Comm.--Frankfort, Ky.

View Photo 44. 112 W. Eleventh St.--north side--  
taken from the southeast.

MAR 31 1980

44/47



# The Kentucky Heritage Commission

Name Seminary Square Historic District

Location Covington, Kenton County, Kentucky

Photographer Jayne C. Henderson

Date Taken January 1980

Negative Location Ky. Heritage Comm.--Frankfort, Ky.

View Photo 45. 112 W. Eleventh St.--north side-

taken from the south.

MAY 27 1980

MAR 31 1980

45  
47



# The Kentucky Heritage Commission

Name Seminary Square Historic District

Location Covington, Kenton County, Kentucky

Photographer Jayne C. Henderson

MAY 27 1980

Date Taken January 1980

Negative Location Ky. Heritage Comm.-Frankfort, Ky.

View Photo 46. 112 W. Eleventh St.--iron fence

detail--taken from the southeast.

MAY 31 1980

46/47





# The Kentucky Heritage Commission

Name Seminary Square Historic District

Location Covington, Kenton County, Kentucky

Photographer Jayne C. Henderson

MAY 27 1980

Date Taken January 1980

Negative Location Ky. Heritage Comm.-Frankfort, Ky.

View Photo 47. 114-116 W. Eleventh St.--north side-  
taken from the southeast.

47/47