



MT. AVENTINE,  
CHARLES COUNTY, MD.

J. RICHARD RIVOIRE

8/1991

MB SHPO

SOUTH ELEVATION OF HOUSE

1/17



MT. AVENTINE

CHARLES COUNTY, MD.

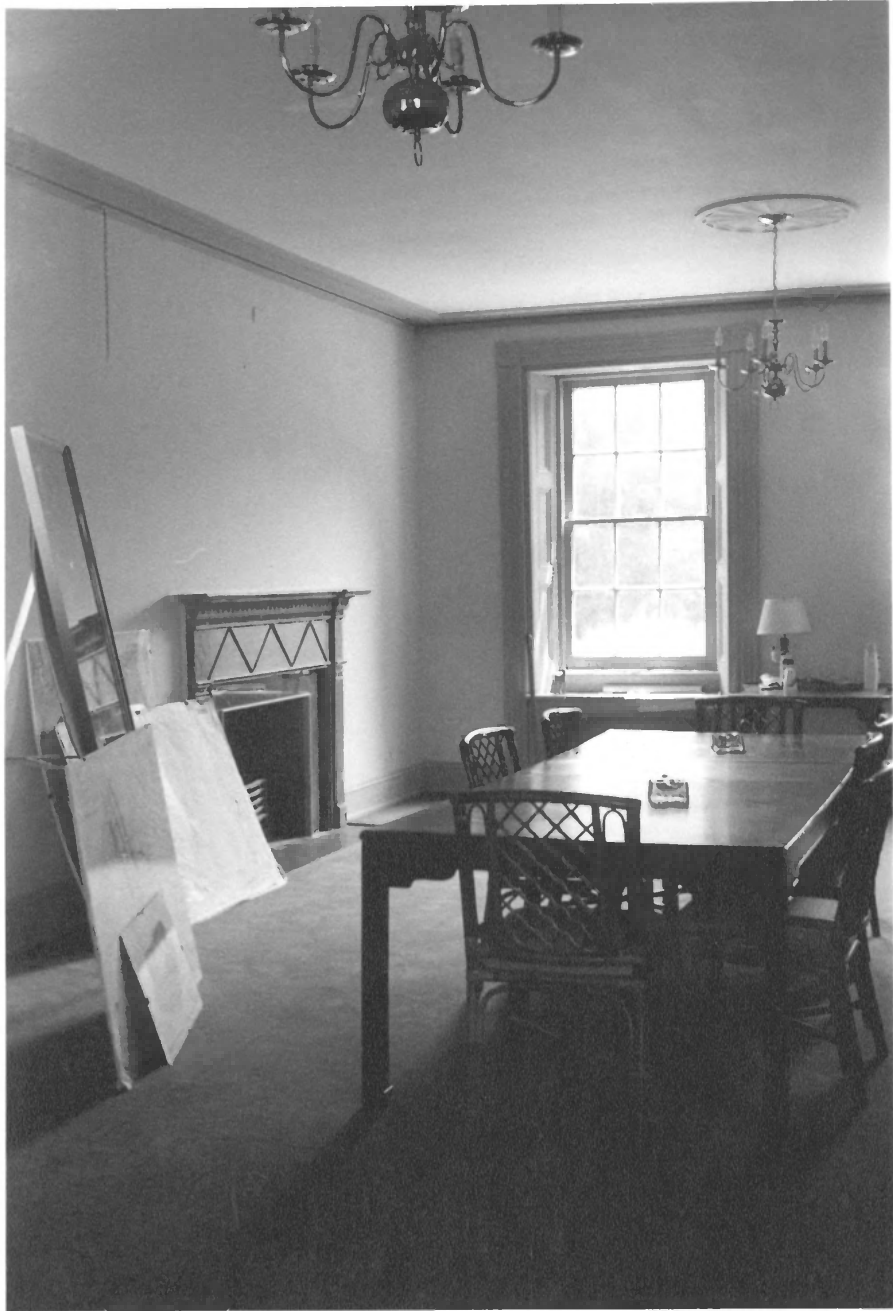
J. RICHARD RIVOIRE

8/1991

MD SITPO

W. END OF HSE. 1/2 STONE WING

2/17



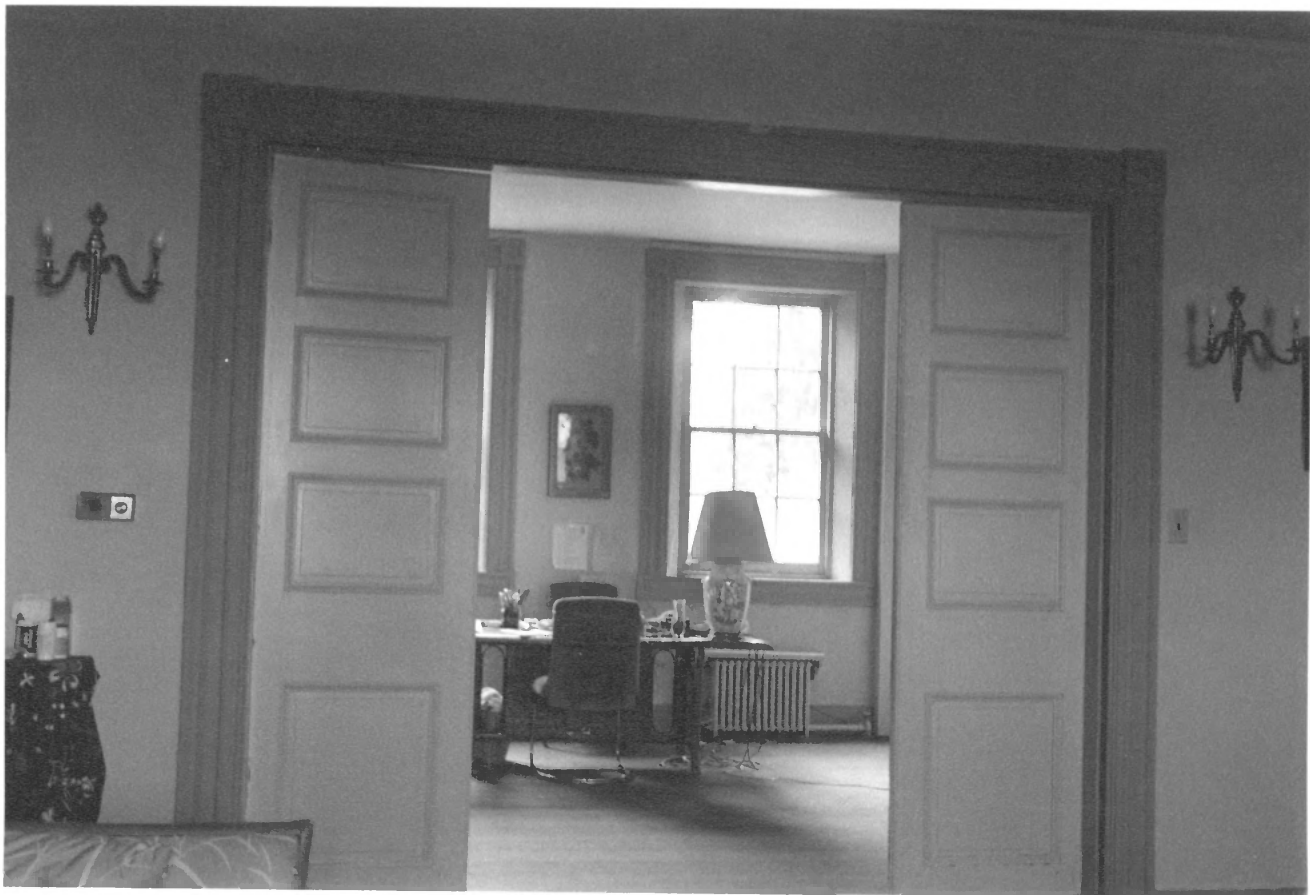
MT. AVENTINE  
CHARLES COUNTY, MD.  
J. RICHARD RIVOIRE

8/1991

MDSHP

FIRST FLOOR EAST ROOM FROM NW

3/17



MT. AVENTINE,  
CHARLES COUNTY, MD.

J. RICHARD RIVOIRE

8/1991

MD SHPO

FIRST FLOOR WEST ROOMS 'E' PARTITION DOOR  
FROM N.

4/17





MT. AVENTINE,  
CHARLES COUNTY, MD.  
J. RICHARD RIVOIRE

8/1991

MD 54RD

APPROACH DRIVE VIEWED FROM  
HOUSE (N.)

5/17



MT. AVENTINE

CHARLES COUNTY, MD.

J. RICHARD RIVOIRE

8/1991

MD SHED

SHED STABLE

FROM SW.

6/17



MT. AVENTINE

CHARLES COUNTY, MD,

S. RICHARD RIVOIRE

8/1991

MD SHPO

HISTORIC SMOKEHOUSE

AND STALL (RIGHT,

VIEWED FROM SOUTH.

7/17



MT. AVENTINE

CHARLES COUNTY, MD.

J. RICHARD RIVOIRE

8/1991

MD SHPO

VIEW OF CHAPMAN'S POINT (POINT FISHERY)

FROM EDGE OF HILL LEFT OF  
HOUSE. CAMERA FACING W-NW.

8/17





MT. AVENTINE,  
CHARLES COUNTY, MD.

J. RICHARD RIVOIRE

611991

MD SHPO

VIEW OF ACCESS ROAD TO LOWER FIELD  
FROM WEST OF SMOKEHOUSE  
CAMERA FACING N.-NW.

9/17



MT. AVENTINE,  
CHARLES COUNTY, MD.

J. RICHARD RIVOIRE

8/1991

MD SHPO

VIEW OF LOWER FIELDS 'E1 RIVER FROM  
REAR EVE. OF HSE. CAMERA FACING N.  
TOWARD MT. VERNON. 'E1 ALEXANDRIA.

10/17



MT. AVENTINE,  
CHARLES COUNTY, MD.  
J. RICHTER'S RESERVOIR

8/1991

MD SHPO

VIEW

11/17

FROM N. N-W.



MT. AVENTINE  
CHARLES COUNTY, MD.

J. RICHARD RIVOIRE

8/1991

MD SHPO

VIEW TOWARD HOUSE FROM LOWER  
FIELD. HOUSE BEHIND TREES, CENTER  
RIGHT. WELLHOUSE CENTER LEFT.  
CAMERA FACING S-SE

12/17





MT. AVENTINE,  
CHARLES COUNTY, MD.

J. RICHARD RIVOIRE

8/1991

MD SHPO

POTOMAC RIVER SHORELINE; CAMERA  
FACING E-NE

(CHAPMAN'S LANDING) ON SITE PLAN.

13/17



MT. AVENTINE

CHARLES COUNTY, MD.

J. RICHARD RIVOIRE

8/1991

MD SHPO

CHAPMAN FAMILY CEMETERY.

CAMERA FACING

SE. STONES FACE EAST.

14/17



MT. AVENTINE  
CHARLES COUNTY, MD.  
S. RICHARD RIVOIRE

8/1991

MD 5HPO

TOBACCO BARN  
CAMERA FACING SE.

15/17



Mount Aventine

Charles Co, Maryland

1993

photo: R. Andrews

neg: MD SHPO

view of 19<sup>th</sup> C house site

16/17





Mount Aventine

Charles Co., Maryland

1993

photo: R. Andrews

neg: MD SHPB

view of 19<sup>th</sup> C house site

17/17