

785



**NATIONAL REGISTER OF HISTORIC PLACES
REGISTRATION FORM**

1. Name of Property

historic name: **Itta Bena Historic District**
other names/site number:

2. Location

street & number: **Roughly bounded by Cemetery St. to the north, Lake Shore Drive to the east, Lake Side St. to the South and Dewey St. to the west.**

not for publication

city or town:

vicinity

state: **Mississippi**

code: **MS**

county: **Leflore**

code: **083**

zip code: **38941**

3. State/Federal Agency Certification

As the designated authority under the National Historic Preservation Act of 1966, as amended, I hereby certify that this nomination request for determination of eligibility meets the documentation standards for registering properties in the National Register of Historic Places and meets the procedural and professional requirements set forth in 36 CFR Part 60. In my opinion, the property meets does not meet the National Register Criteria. I recommend that this property be considered significant nationally statewide locally. (See continuation sheet for additional comments.)

Dr. Robert

July 30, 2009

Signature of certifying official

Date

State Historic Preservation Officer
State or Federal agency and bureau

In my opinion, the property meets does not meet the National Register criteria. (See continuation sheet for additional comments.)

Signature of commenting or other official

Date

State or Federal agency and bureau

4. National Park Service Certification

I, hereby certify that this property is:
 entered in the National Register,
 See continuation sheet.
 determined eligible for the
National Register
 See continuation sheet.
 determined not eligible for the
National Register
 removed from the National Register
 other (explain):

Signature of the Keeper

Date of Action

Edson H. Beall *9.30.09*

5. Classification

Ownership of Property: Private, Public-Local

Number of Resources within Property:
(Do not include previously listed resources in the count)

Category of Property:

District

Contributing	Noncontributing	
146	101	buildings
	2	sites
		structures
		objects
146	103	Total

Name of related multiple property listing

(Enter "N/A" if property is not part of a multiple property listing.)

NA

**Number of contributing resources previously listed
in the National Register** None

0

6. Function or Use

Historic Functions:

Domestic: single dwelling

Domestic: multiple dwelling

Domestic: secondary structure

Commerce/Trade: business, financial institution, specialty store, restaurant, warehouse

Social: meeting hall

Government: City Hall, Post office

Education: school, library

Religion: religious facility

Recreation and Culture; sports facility

Landscape: City park

Current Functions:

Domestic: single dwelling

Domestic: multiple dwelling

Domestic: secondary structure

Commerce/Trade: business, financial institution, specialty store, restaurant, warehouse

Social: meeting hall

Government: City Hall, Post office

Education: school, library

Religion: religious facility

Recreation and Culture; sports facility

Landscape: City park

7. Description

Architectural Classification(s):

Tudor Revival

Queen Anne

Free Classic Queen Anne

Colonial Revival

American International

Bungalow/Craftsman

Minimal Traditional

Ranch

Materials:

foundation: brick, concrete, asphalt
roof: asphalt, asbestos, metal
walls: weatherboard, asbestos shingle, metal/aluminum, stucco
other: vinyl

Narrative Description:

See Continuation Sheets

8. Statement of Significance

Applicable National Register Criteria

- X **A** Property is associated with events that have made a significant contribution to the broad patterns of our history.
- B** Property is associated with the lives of persons significant in our past.
- X **C** Property embodies the distinctive characteristics of a type, period, or method of construction or represents the work of a master, or possesses high artistic values, or represents a significant and distinguishable entity whose components lack individual distinction.
- D** Property has yielded, or is likely to yield information important in prehistory or history.

Areas of Significance

Community Planning & Development
Architecture
Social History

Period of Significance

1888-1959

Significant Dates

Criteria Considerations:

Property is:

- A** owned by a religious institution or used for religious purposes.
- B** removed from its original location.
- C** a birthplace or a grave.
- D** a cemetery.
- E** a reconstructed building, object, or structure.
- F** a commemorative property.
- G** less than 50 years of age or achieved significance within the past 50 years.

Significant Person(s)

Cultural Affiliation(s)

Architect/Builder

Thomas Henry Johnson Jr.
C. H. Dean Jr.
Frank R. McGeoy
Robert J. Moor

Narrative Statement of Significance:

See continuation sheets.

9. Major Bibliographical References

Bibliography See continuation sheet.

Previous documentation on file (NPS)

- preliminary determination of individual listing (36 CFR 67) has been requested.
- previously listed in the National Register
- previously determined eligible by the National Register
- designated a National Historic Landmark
- recorded by Historic American Buildings Survey

- recorded by Historic American Engineering Record

Primary Location of Additional Data

- X State Historic Preservation Office
- Other State agency
- Federal agency
- Local government
- University
- Other

Name of repository:

United States Department of the Interior
National Park Service

**NATIONAL REGISTER OF HISTORIC PLACES
CONTINUATION SHEET**

Section: 7

Page: 5

Itta Bena Historic District
Itta Bena, Leflore County Mississippi

Narrative Description

Itta Bena is located in central Leflore County within the Yazoo-Mississippi Delta, a distinct section in the northwest corner of Mississippi. This fertile wedge of land is approximately 200 miles long and 85 miles wide at its widest point, bounded by the Mississippi River to the west, the Loess Hills to the east, Chickasaw Bluffs at Memphis to the north and Walnut Hills in Vicksburg. The rich alluvial soil deposits found here are the result of historic flooding of the Mississippi and Yazoo Rivers and shaped the social and agricultural development of the region.¹

The Itta Bena Historic District, located in Itta Bena, Leflore County, Mississippi is composed of a total of 249 resources consisting of 247 structures and two sites: the Itta Bena City Park and a municipal tennis court. Of these resources, 146 are contributing to the character of the district and 103 non-contributing. Of the non-contributing, twenty historic resources have lost architectural integrity through alteration or neglect and the remaining eighty-three were constructed after the period of significance. The district includes 48 commercial buildings, three religious structures, two municipal buildings, one library and an educational campus, in addition to residential resources.

This district includes a small but mainly intact two block commercial area in the center of town along Humphreys and Front Streets. (Photographs 1, 2, 3, 4) These streets flank the active Columbus & Greenville railroad which bisects downtown, running from east to west. The district stretches north on Schley and Lake Shore Streets to Cemetery Drive, and south to Lake Side Street (Mississippi State Highway 7). The eastern boundary follows Lake Shore Street, adjacent to Roebuck Lake from north to south, and the western boundary is where the neighborhood transitions to more modern residences or undeveloped property, roughly along Dewey Street. An effort to include the traditionally African-American neighborhood to the northwest of the district was unsuccessful because it would have resulted in a discontinuous boundary and a disproportionate number of non-contributing resources.

Topography is flat, typical of the Mississippi Delta upon which the town sits. Included within this district are fine examples of early twentieth-century one-story, commercial buildings typical of a bustling Southern railroad community. In addition, several two-story masonry commercial buildings are interspersed with the single-story resources. Many of these commercial buildings retain original metal storefronts and window configuration, while others have been altered or not maintained and have lost architectural integrity.

Since 1888, Itta Bena has been dominated by the presence of the still active C & G railroad, which exits the town to the east by trestle over Roebuck Lake back into the flat fields of the Delta (Photo 5), and west through what was previously the industrial area. Downtown businesses face the tracks from both the north and south, set above the brick-paved streets lined with diagonal parking. The streets are shaded with mature trees and the sidewalks accessed by one, two or three concrete steps. The commercial area retains its small southern town character through the retention of structural massing, placement, façade lines and street plans. The town park is

¹ McLemore, Richard Aubrey. *A History of Mississippi*. University & College Press of Mississippi. 1973. p.8-9.

**United States Department of the Interior
National Park Service**

**NATIONAL REGISTER OF HISTORIC PLACES
CONTINUATION SHEET**

Section: 7

Page: 6

Itta Bena Historic District
Itta Bena, Leflore County Mississippi

also situated downtown, adjacent to the tracks east of Basket Street (Inv. 2). Nicely landscaped with mature trees, the park was created in the 1980s and contains an octagonal gazebo, small pavilion, concrete benches, bleachers, a circular planter and historic marker commemorating the founding of the town. West of the park is the site of the Southern Railroad depot, demolished in the 1970s and replaced by the modern commercial building which houses the Big Store retail market. The historic Itta Bena Jail is located one block south of Front Street on an unnamed alley behind the commercial buildings.

To complement the commercial area, a diverse collection of residential resources that date from the late nineteenth century to post-WWII is presented within this district as well. The residential streets to the north and south of the commercial blocks are sprinkled with Queen Anne and early vernacular homes surrounded by later development, represented by Tudor Revival, Neo-Classical, Craftsman, Minimal Traditional, Colonial Revival and Ranch houses. There are no previously listed resources within the district, although several buildings would be eligible on their own: most notably the Itta Bena First United Methodist Church at 201 Main Street (Inv. 140) (Photo 6), First Baptist Church at 301 Main Street (Inv. 145) (Photo 7), the former First National Bank building at 104 Basket Street (Inv.5) (Photo 8), and the Itta Bena Consolidated School (Inv. 145) (401 Lakeside) (Photo 9).

The homes on two-lane Lake Shore Street, north of the railroad tracks, face scenic Roebuck Lake and most sit on generous lots that are elevated from street level, accessed by concrete steps and sidewalks (Photo 10). Neat landscaping includes shrubbery, flower beds, and mature trees. Sidewalks on the west side of Lake Shore Street provide pedestrian access to the businesses located downtown. Many residents have placed swings, docks and picnic areas east of the street to face and utilize the lakefront (Photo 11). Early homes along Lake Shore date from around the turn of the twentieth century and include several Queen Anne examples (Inv. 100) (Photo 12). Later construction displays the influence of the Craftsman (Inv. 115 & 117), followed by examples of Minimal Traditional (Inv. 108) (Photo 13) and still later, Ranch (Inv. 106 & 113).

Schley Street (SR7) runs parallel to Lake Shore Street and is the main route into Itta Bena from the north. Lined with sidewalks and trees, the two-lane street features dwellings that are later than those on Lake Shore, but display similar lot sizes, setbacks and maintenance. Residences on this street include examples that reflect Tudor (Inv.205) (Photo 14), Craftsman, (Inv. 186 & 190) and Queen Anne influences (Inv. 189) (Photo 15) as well as Ranch and vernacular resources on this architecturally diverse street.

The street grid of the residential area south of the commercial district contains smaller blocks and home sites, but retains setbacks, placement relationships and maintenance consistent with those to the north. Sidewalk and tree-lined two-lane streets contain a mixture of older and more contemporary housing. Examples include Queen Ann (Inv. 19) (Photo 16), Craftsman (Inv. 144) (Photo 17), Colonial Revival (Inv. 36) (Photo 18) and American International at 102 Wheeler Street (Inv. 220) (Photo 19).

**United States Department of the Interior
National Park Service**

**NATIONAL REGISTER OF HISTORIC PLACES
CONTINUATION SHEET**

Section: 7

Page: 7

Itta Bena Historic District
Itta Bena, Leflore County Mississippi

The southern boundary of the proposed district is punctuated by the Itta Bena Consolidated school complex (Inv. 125) (Photo 9). This complex contains three significant contributing buildings: the High School, Junior High School, and the gymnasium. The High School building was constructed in 1930 and was designed by architect Frank McGeoy. This one-story, brick T-plan school building retains much of its architectural integrity except for the removal of the original windows and replacement with in-fill and smaller metal-frame windows. It is mirrored by the 1941 Junior High School building whose windows suffered the same fate. Set behind the front buildings is the circa 1940 gymnasium, a one-and-a-half story brick structure which displays architectural details complimentary to the front buildings. The windows in the gymnasium have also been replaced with in-fill and metal frame windows. This complex is still in used as an educational facility for Leflore County.

The housing stock in Itta Bena is considerably varied, but the sites remain consistent in size, setbacks and landscaping. Most blocks contain a variety of styles, sizes and ages of resources, characterized by a few older homes interspersed with later development and intrusions. These intrusions include steel storage buildings, found on West Humphreys Street and Lake Shore Drive, modern service stations on Schley Street (Inv. 170) (Photo20) at the south end of Basket Street and Humphreys Street West, and a number of new residences that replace non-extant structures throughout the district (Photo 21).

Like other Delta communities such as Greenwood (Leflore County) and Cleveland (Bolivar County), the development of Itta Bena was inextricably tied to the arrival of the railroad. While Itta Bena's historic district includes a smaller commercial district than neighboring Greenwood, similarities in many of the one-story brick commercial buildings constructed early in the twentieth century can be seen in size, scale, fenestration and building materials. However, rapid commercial development in the city of Greenwood continued from 1910-1960, a period of commercial stagnation in Itta Bena. The lack of commercial growth in Itta Bena during this period resulted in the retention of a greater proportion of residential resources and less intrusive commercial in-fill. The result is a well-preserved historic district that presents an intact commercial area enhanced with residential resources that together reflect Itta Bena's growth during the period of significance.

**United States Department of the Interior
National Park Service**

**NATIONAL REGISTER OF HISTORIC PLACES
CONTINUATION SHEET**

Section: 7

Page: 8

Itta Bena Historic District
Itta Bena, Leflore County Mississippi

Inventory of Resources

The following resources contained within the boundaries of the Itta Bena Historic District are arranged in ascending numerical order by alphabetized street name. An inventory number has been assigned to each principle resource within the district. Some resources contain more than one component, such as an auxiliary garage or secondary building. In these cases the associated structures are given a letter designation (e.g.: 124A, 124B). Those buildings that contribute to the historic and architectural character of the district have been characterized with a (C) to distinguish those which do not contribute to the character of the district, which are designated with (NC). Non-contributing resources may have been constructed outside the period of significance or lost architectural integrity due to extensive alteration or neglect.

1. (C) Alley c.1915
Itta Bena Jail
One-story brick rectangular structure with a flat roof, stepped parapet and brick cap. The north elevation contains a centrally located metal door in metal surround, topped by a barred vent. Over the vent is a recessed panel across the façade framed with brick. The east and west elevations contain a single barred window with wood frame and concrete sill. The building is deteriorated and grown over with vegetation.

2. (NC) 100? Basket Street c. 1975
City Park
Shaded and landscaped green space located between Humphreys and Front Streets, bounded to the east by Lake Shore Street and to the west by Basket Street, with the Columbia and Greenville Railroad tracks running parallel to the south. The Park is a well maintained, nicely landscaped green space shaded with mature trees. Cement sidewalks lead to bleachers, concrete benches, a small pavilion, gazebo, circular planter, and a display cannon.

3. (NC) 102? Basket Street c.1990
Used Car Lot
Cement block commercial building rests on a concrete slab with asphalt-shingle, pyramidal-hip roof and metal awning extending from entrance supported on wood posts. Main entrance is 4-light wood door flanked by single pane fixed windows in wooden surround. There is a one-story metal frame and clad addition to the south.

United States Department of the Interior
National Park Service

**NATIONAL REGISTER OF HISTORIC PLACES
CONTINUATION SHEET**

Section: 7

Page: 9

Itta Bena Historic District
Itta Bena, Leflore County Mississippi

4. (NC) **103 Basket Street**
Commercial Building

c.1905

One-story masonry commercial building features decorative corbelling and flat parapet. Significant alterations have diminished architectural integrity and include recessing the original façade to produce a projecting shelter supported by two square wooden posts. It features wooden panels over brick veneer with a centered nine-light over four raised panel entry door flanked by fixed pane 20-light windows with soldier course headers and rowlock sills.

5. (C) **104 Basket Street**
Former First National Bank

1918-19

Neo-Classical

Imposing two-story Neo-Classical former bank has a flat front parapet with a slightly projecting dentiled pediment centered over flanking engaged segmented columns topped with Corinthian capitals, and a wide dentiled cornice along the center of the front façade. Under the gable is a tripartite 15-light leaded window over a bracketed, dentiled entablature with a centered date panel which reads '1919.' Double-leaf wood single-light doors are topped with a single transom and sheltered by a canvas awning. Flanking this are matching tripartite 15-light leaded windows with colored glass panels in the center pane, then matching pilasters at the corners. Three bay-w-d-w-façade is executed in scored stucco; the north elevation has exposed brick and south elevation is clad in stucco. Both side elevations contain five openings that match in size and profile the front windows, but have been in-filled with wood.

6. (NC) **105 Basket Street**
Commercial Building

c.1910

One-story brick commercial building with corbelling at flat parapet. The façade has been significantly altered and is dominated by a sloping shingled awning over a pair of matching storefronts consisting of three 32-light panes flanked by wood panel sidelight elements. Two matching entry doors are four-panel wood with four lights at top. The alterations have diminished the architectural integrity of the building.

7. (C) **107/107 1/2 Basket Street**
Commercial Building

c.1910

One-story brick commercial building with flat parapet and masonry cap. Two storefronts, each have inset panel for signage and central shed shingled awning flanked by smaller matching awnings over the windows. Storefront on left (restaurant) has a central doorway with thin vertical sidelights flanked by single fixed panes over a low brick wall and applied shutters. Storefront to the right matches except windows are 2/2, and entry door is smaller with 1/1 sidelight over panel.

United States Department of the Interior
National Park Service

**NATIONAL REGISTER OF HISTORIC PLACES
CONTINUATION SHEET**

Section: 7

Page: 10

Itta Bena Historic District
Itta Bena, Leflore County Mississippi

8. (NC) **108 Basket Street** **c.1919**
Commercial Building (NAPA Auto)
One-story commercial building has a flat roof and has been significantly altered by the application of a metal slipcover. Street façade contains seven bays- w-w-w-d-w-w-w. Windows are single fixed glazed in metal frame over metal panels. Central entry is two fully glazed metal-frame doors. A flat metal awning shelters the entrance, and is supported on metal poles.
9. (C) **109 Basket Street** **c.1915**
Commercial Building
One-story stucco-over-brick commercial building divided into three storefronts has flat roof with metal cap. The storefront to the left (Community Flowers) contains triple display windows in metal frames over a low wall with cast concrete sill and double modern fully glazed entry door to the left. The middle storefront (The Melting Pot) contains two display panes with four-light transoms above, all in wood frames. The entry door (a modern metal door with single light), is set in an arched opening, partially in-filled with wood panels. A small metal awning shelters the door, supported by metal brackets. The storefront to the right (Mary Lou's) contains three symmetrical arched openings. The door is centrally located, a modern metal door, flanked by boarded windows topped with double panes in metal frames. A canvas awning on metal framework spans the three openings.
10. (NC) **110 Basket Street** **c.1919**
Commercial Building
One-story stuccoed brick commercial building with flat front parapet and stepped side. The façade has been significantly altered and as a result the architectural integrity has been compromised. A shingled mansard/shed awning dominates the front façade, overhangs the sidewalk with beaded board ceiling and is supported by metal poles. There are ten bays-w-w-d-w-w-w-w-w-d-w. Windows are single, fixed-pane with concrete sills over low masonry wall with inset panel. The four openings to the right have been boarded. The remaining door is a single glazed modern with single sidelights.
11. (NC) **111 Basket Street** **c.1970**
Commercial Building
One-story cement block and plywood clad flat-roofed commercial building. Two-bay façade has d-w. Entry is three-light over three-horizontal panel wood door to the left and eight-light horizontal metal frame fixed window to the right.

United States Department of the Interior
National Park Service

**NATIONAL REGISTER OF HISTORIC PLACES
CONTINUATION SHEET**

Section: 7 Page: 11 Itta Bena Historic District
Itta Bena, Leflore County Mississippi

-
12. (NC) **201 Basket Street** c.1960
House
One-story asphalt-shingle, side-gable roof frame dwelling rests on a brick foundation. North and south elevations are clad in clapboard, while the west (street) elevation has brick veneer. Asymmetrical façade is w-w-d-w. A projecting front facing gable with clapboard in pediment shelters the entry, supported on Doric columns that rest on a cement deck. All windows are single fixed picture windows set in wood frames with rowlock sills. Door is modern six raised-panel metal in wood frame.
13. (NC) **202 Basket Street** c.1970
House
One-story side-gable frame dwelling has brick veneer and architectural shingles on a brick foundation. A stepped side gable addition to the right contains a brick chimney and clapboard siding on end. Overhang in the addition shelters porch supported by square columns that rest on low brick knee-wall. Two windows are symmetrically placed on main block, 4/4 double-hung wood-frame with decorative plank shutters.
14. (C) **203 Basket Street** c.1950
House
One-story standing-seam metal roofed, side-gabled frame dwelling has board-and-batten wood siding over brick veneered low wall on a brick foundation with a moderately wide overhanging eave. Asymmetrical three-bay façade is w-d-w. Door is centrally located; a nine-light over four raised panel modern door in wood surround. The smaller window to the left is 6/6 wood-frame double-hung in wooden surround, to the right is a larger 8/8 wood-frame double-hung. A small entry addition is attached to the south elevation at the rear. It has a matching metal roof and contains an entry door, which is obscured with a metal screen door.
15. (C) **205 Basket Street** c.1950
Duplex
One-story asphalt-shingle side-gable frame dwelling is clad in drop siding and sits on a brick foundation. Symmetrical 10-bay façade; ww-ww-dd-ww-ww. A central projecting front facing gable is supported by fluted columns resting on a cement deck and shelters the two entry doors. Wood siding fills the unadorned pediment. Windows are paired 6/6 vinyl in wide plain wood surrounds. A shed roof awning projects over secondary entrance on north elevation.

**United States Department of the Interior
National Park Service**

**NATIONAL REGISTER OF HISTORIC PLACES
CONTINUATION SHEET**

Section: 7

Page: 12

Itta Bena Historic District
Itta Bena, Leflore County Mississippi

16. (NC) **207 Basket Street
House**

c.1940

One-story side-gable asphalt-shingle roof frame dwelling has lost architectural integrity with the application of brick veneer cladding. It rests on a brick foundation, has soldier course at eave, rowlock course sills and raised panel quoins at corners. Centered entrance is sheltered by a small projecting front facing gable with flared vergeboard and vertical wood panels in pediment, supported by square wood posts set on square wood blocks on a cement deck. Door is six raised-panel metal in wood frame. Two windows to the left are 2/2 horizontal pane wood-frame double-hung, to the right of the door are the same with flanking vertical panes.

17. (C) **300 Basket Street
House**

c.1940

Craftsman

One-story frame dwelling fronts the alley, side gable facing Basket Street and a small side gable addition to the rear. Clad in board-and-batten siding, it rests on a brick foundation. Windows are 8/1, with the topmost lights small squares over long vertical panes. All windows are wood-frame double-hung in plain wood surrounds. Elevation that faces Basket has 2-bays; ww-ww, with two sets of double windows. The elevation that faces the alley has 5 bays w-w-ww-w-d. A tapered brick exterior chimney pierces the east slope of the roofline. The addition to the rear contains the entry door along with a 40-light fixed window.

18. (NC) **302? Basket Street**

c. 1980

Two side-by-side tennis courts surrounded by tall chain link fence with two benches to the north.

19. (C) **304 Basket Street
House**

c.1900

Queen Anne

Two-story frame multi-gable on hip asphalt-shingle roofed dwelling rests on a brick foundation and is clad with drop siding. The six bay façade, w-w-w-d-w-w contains two front-facing gables; the one to the left is larger and contains diamond and fish scale wood shingles in pediment, along with a 6/6 double-hung window in plain wood surround. The gable to the right is smaller, has matching wood shingles and a center blind fanlight. Both contain a decorative vergeboard and central bracket. A shallow shed-roof shelters the front porch and incorporates a one-story conical-roofed open tower, before wrapping to the side and is supported by Greek Ionic fluted columns resting on the wood deck. Centered between the two front facing gables is a smaller gablet with a decorative bracket at the peak and flared vergeboard that delineates the entrance which is sheltered by the shed porch-roof. Door surround has double transom over single-leaf door flanked by single-light over raised panel sidelights. First story windows are 1/1 double-hung wood-frame with plain wood surrounds.

United States Department of the Interior
National Park Service

**NATIONAL REGISTER OF HISTORIC PLACES
CONTINUATION SHEET**

Section: 7

Page: 13

Itta Bena Historic District
Itta Bena, Leflore County Mississippi

20. (C) **305 Basket Street**
House

c.1950

One-story side-gable asphalt-shingle roof frame dwelling with vinyl siding on façade and asphalt shingle cladding on sides over a brick foundation. Three-bay asymmetrical façade w-d-w. Windows are 6/6 double-hung with applied shutters. A small gablet shelters porch with scalloped fascia, supported by square wooden poles on resting on cement deck. A small shed roof addition attached to the left rear contains a double 6/6 window with shutters.

21. (NC) **306 Basket Street**
House

c.1980

One-story side-gable dwelling has brick cladding and an asphalt-shingle roof and rests on brick piers. The main block has a slightly projecting porch, sheltered under flared gable slope, supported by fluted columns that rest on a cement deck. Façade of porch block is www-d-www. Two sets of triple 4/4 wood-frame double-hung windows with applied shutters flank the entry door. To the left of the main block are two step-gable hyphens, each containing a double 4/4 wood-frame double-hung window with applied shutter. To the farleft is a glassed greenhouse. A single hyphen to the right contains a pair of windows. There is a soldier course at eaves.

22. (NC) **307 Basket Street**
House

c.1915

Multi-hip and gable asphalt-shingle roof frame dwelling clad in aluminum siding rests on a cement block foundation. Central hip roof features a center front facing gable with centered one light window sheltered with an aluminum awning. To the right, a hip roof enclosed tower has had all fenestration covered with aluminum. Eaves have been enclosed in aluminum. A shed roof covers the projecting porch which wraps to the left, supported by tapered columns to wood deck. Door and window details are obscured with screens. Architectural integrity has been lost with the application of the aluminum siding and obliteration of fenestration in the tower.

23. (NC) **309 Basket Street**
House

c.1960

Minimal Traditional

One-story side-gable, asphalt-shingle roof, brick clad dwelling on a brick foundation. Asymmetrical façade is four bay; w-ww-d-w and terminates with an open porch to the right, supported by brick clad square pillars. Windows are 9/1 and 6/6 double-hung with rowlock sills and applied shutters. Door is sheltered by small gable portico with flared vergeboard, supported on turned posts. Door is 12-light, flanked by 8-light sidelights. Wide closed eaves top a single soldier course.

United States Department of the Interior
National Park ServiceNATIONAL REGISTER OF HISTORIC PLACES
CONTINUATION SHEETSection: 7 Page: 14 Itta Bena Historic District
Itta Bena, Leflore County Mississippi

-
24. (C) **401 Basket Street** c.1950
House
One-story brick-clad frame dwelling has asymmetrical façade with 5 bays; w-w-d-w-w. Windows are 6/6 double-hung wood-frame in wood surrounds with rowlock sills. Offset entry is recessed and sheltered by a wide overhang, supported by flanking columns resting on concrete deck. A step-gable roof screen porch extends to the left and small step-gable addition projects to the right in the rear.
25. (NC) **403 Basket Street** c.1975 **Ranch**
House
Multiple hip-roof, brick-clad, one-story dwelling sits on a brick foundation with an open carport to the far right under a side gable roof supported on metal poles. Asymmetrical façade projects in the center and contains six bays; w-w-d-w-w-w. Windows include an 8/8 double-hung wood-frame to far left, a 6/6, then the entrance. The flush wood door is flanked by slim vertical single-pane sidelights. The projecting plane contains a central simulated 12-light picture window flanked by 4/4 double-hung windows. All windows have rowlock sills.
26. (NC) **502? Basket Street** c.1980 **Ranch**
House
One-story side gable dwelling with brick veneer on brick foundation. Symmetrical façade has five bays; w-w-d-w-w. All windows are 1/1 wood-frame double-hung in plain wood surrounds. Door details are obscured by screen door. A shed roof open carport extends from the right.
27. (NC) **503 Basket Street** c.1980
House
One-story frame dwelling with asphalt-shingle hip roof and vinyl siding rests on a brick pier foundation. A projecting front facing gable shelters the centrally located entrance and is supported by square vinyl clad posts on a cement deck accessed by a front ramp with wrought iron railing. Vinyl siding and centered octagonal vent in pediment. Three vertical, fixed, single-pane windows flank the entry on each side.
28. (NC) **505 Basket Street** c.1990 **Ranch**
House
One-story side-gable brick and vertical wood siding clad dwelling is on concrete slab foundation. Main central block has brick veneer and symmetric façade. A central entry door is flanked by double 6/6 double-hung windows with applied shutters. The roof extends over this central block to form a porch, supported on square wooden posts. To the right, the garage has been converted to living space, is vertical wood panel clad and contains a central modern entry door with oval light flanked by double one-light windows in wood surrounds. To the left of the main block is a step gable roof addition with a single window which matches those in the main block.

United States Department of the Interior
National Park Service

**NATIONAL REGISTER OF HISTORIC PLACES
CONTINUATION SHEET**

Section: 7

Page: 15

Itta Bena Historic District
Itta Bena, Leflore County Mississippi

-
29. (NC) **507 Basket Street** c.1990
Commercial Building
One-story commercial building has an asphalt-shingle gable roof and front mansard awning with vertical wood board-and-batten siding, single fixed display window in metal frame with entrance door to left, sitting on concrete slab foundation
30. (NC) **508 Basket Street** c.1970
Service Station
One-story flat roof cement block commercial building with projecting flat canopy that shelters gas pumps. Façade contains two modern glazed entry doors in metal frames and two fixed display windows in metal frames with cast cement sills. A two bay open car wash sits to the north.
31. (NC) **101 Catchings Street** c.1970
House
One-story side gable brick clad frame residence rests on concrete foundation. A front facing gable projects to the right to cover an enclosed porch. Windows are 2/2 wood-frame, double-hung and a triple 12/12 wood frame.
32. (NC) **104 Catchings Street** c.1980
House
One-and-a-half story asphalt-shingle, side-gable brick clad dwelling rests on a brick foundation. Flanking front facing gables are flush with façade. Twin gable-roof dormers each contain a six-light casement in wood surround. Symmetrical façade contains five bays. The central entry door is obscured by a decorative metal screen, then flanked by triple 3/1 wood-frame double-hung windows with wood sills and surrounds, in turn flanked by double 6/6 wood-frame double-hung windows with applied shutters.
3. (C) **106 Catchings Street** c.1940
House
One-story asphalt-shingle, side-gable frame dwelling rests on a brick foundation and has asbestos-shingle cladding. The slightly off-center front gable projects slightly and contains a small central bracketed gablet that shelters the entry door; a Craftsmen type vertical wood door with six small lights off-set to the upper right. Flanking the door are small twin single-light windows in plain wood surrounds. To the right of the entry block are two replacement 4/4 horizontal metal-frame double-hung windows. A pair of 6/6 wood-frame double-hung windows are to the left.

United States Department of the Interior
National Park Service

**NATIONAL REGISTER OF HISTORIC PLACES
CONTINUATION SHEET**

Section: 7

Page: 16

Itta Bena Historic District
Itta Bena, Leflore County Mississippi

-
34. (NC) **200 Catchings Street** c.1970 **Ranch**
House
One-story, asphalt-shingle, side-gable frame dwelling has vertical board-and-batten siding and rests on a brick foundation. The roof slope overhangs to create a three-quarter width porch supported on square wooden posts resting on a cement deck. Windows are 2/2 metal-frame double-hung. Five bay façade has ww-d-ww. To the left is an inset carport and an offset brick interior chimney pierces the east (front) slope.
35. (C) **501 Catchings Street** c.1930 **Craftsman**
House
One-story, asphalt-shingle hip-roof frame dwelling sits on a brick foundation, is clad in drop-siding and has wide eaves with exposed rafter tails. Windows are 1/1 wood-frame double-hung in plain wood surrounds. A small saltbox front facing gable roof addition to the left contains triple windows. The roofline extends to a gable roof addition to the right. A hip-roofed porch projects and covers a one quarter-width porch, supported on turned posts resting on a cement deck. The six panel wood entry door has a one-light transom. Asymmetrical façade has 10 bays; www-ww-w-w-w-d-w.
36. (C) **503 Catchings Street** c.1920 **Colonial Revival**
House
Clapboard sided frame dwelling has a two-story asphalt-shingle, hip-roof main block flanked by one-story hyphens. The two-story block has applied rafter ends or dentils and a central one-story porch over the entry topped with an iron balustrade. The porch is supported by fluted columns resting on a cement deck. Double six-panel wood doors have segmented arched surround with keystone. Windows are 6/6 wood-frame double-hung. Main block is symmetric six bay façade; w-w-d-w-w. One story hyphen to the right has a row of four 12/12 wood-frame double-hung windows and a flat roof. To the left has a flat roof, but fenestration is obscured by vegetation.
37. (C) **302? Cleveland Street** c.1900
House
One-story asphalt-shingle side-gable, simple drop-sided, frame dwelling on brick piers infilled with brick. A projecting shed roof covers the almost full width porch and wraps to the left, supported on plain Roman columns, capped and resting on thin wood blocks on a wooden deck. Symmetric façade contains three bays; w-d-w. Windows are 2/2 wood-frame double-hung with plain wood surrounds. The entrance has a wood door with central louvered panel, topped with a two-light transom and flanked by slender two-light over wood panel side-lights. The roof peak is pierced by a plain brick chimney and the west elevation contains an exterior brick chimney. The rear slope is broken and flares out at the rear elevation.

**United States Department of the Interior
National Park Service**

**NATIONAL REGISTER OF HISTORIC PLACES
CONTINUATION SHEET**

Section: 7

Page: 17

Itta Bena Historic District
Itta Bena, Leflore County Mississippi

38. (C) **307 Cleveland Street** **c.1900**
House
One-and-a-half story, drop-sided L-front frame dwelling on a brick foundation. Wide, closed eaves top a plain wide cornice. A shed-roofed screened porch fills the ell, and wraps to the right. The gable front contains a single centrally located 2/2 wood-frame double-hung window in plain surround on first story and a small rectangular vent in peak. Flat square wooden columns support the porch and the openings are filled with metal frame screens. Window and door details are obscured by porch.
39. (C) **309? Cleveland Street** **c.1930** **Craftsman**
House
Irregular hip-and-gable asphalt-shingle roof is side-gable, terminating in a hip configuration to the left. This frame dwelling has clapboard siding, rests on a brick foundation and features a prominent projecting front facing clipped, pent gable which shelters the enclosed centrally located porch. Supported at the corners by stout square wooden posts atop square brick piers, the porch has been enclosed with glass storm windows at the sides and screens at front. Flanking the front porch are double 4/4 wood-frame double-hung windows. A clipped-gable recessed block projects to the left with two matching windows, and a smaller addition to the right contains one window.
40. (NC) **402 Cleveland Street** **c.1980** **Ranch**
House
One-story brick-clad frame dwelling has cross-gable asphalt-shingle roof and rests on a concrete slab. Projecting front gable has masonite siding in peak and flared vergeboards. Windows are 6/6 metal-frame double-hung with applied shutters. Asymmetrical façade has five bays; w-w-d-w-w, with two windows in the front gable, the entry and single window in the ell, sheltered by a wide overhang on decorative metal stanchions, and to the right is an open garage with entry door at the rear.
41. (NC) **403 Cleveland Street** **c.1980** **Ranch**
House
One-story hip-roofed, asphalt-shingle, brick clad dwelling on a concrete slab foundation. Windows are doubled and tripled single vertical panes casement. Asymmetrical façade has ww-www-ww-wwww-d-ww-ww. Recessed entry contains a modern, paneled door.
42. (NC) **405 Cleveland Street** **c.1970** **Ranch**
House
One-story brick-clad ranch has long central hipped roof flanked by projecting hip roofs. Each projecting block contains a double 6/6 window with applied shutters. A patterned masonry wall shelters the recess between the projecting ends and obscures fenestration.

United States Department of the Interior
National Park Service

**NATIONAL REGISTER OF HISTORIC PLACES
CONTINUATION SHEET**

Section: 7

Page: 18

Itta Bena Historic District
Itta Bena, Leflore County Mississippi

43. (C) **505 Cleveland Street**
House

c.1940

One-story frame dwelling with clipped-side gable roof of asphalt-shingles sits on a brick foundation and is clad in drop siding. A centered hip-roof dormer contains 2 vents. The full-width hip-roofed porch wraps to the right, has been enclosed to the left and is supported by decorative metal stanchions resting on a concrete deck. Windows are 1/1 wood-frame double-hung in plain surrounds, except for the one in the enclosed area of the porch, which is 6/6 wood-frame double-hung. Façade is asymmetrical six bay; w-w-w-d-w-w. Door details are obscured, but contains a single-light transom and 1/1 sidelights.

44. (C) **600 Cleveland Street**
House

c.1940

Tudor Revival

One-story brick clad dwelling has side-gable asphalt-shingle roof and rests on a concrete slab foundation. Three bay (ww-d-ww) façade is dominated by an asymmetrical front facing gable with returns that shelters front entrance with a wood six raised-paneled door and 4-pane fan-light. Double 6/6 wood-frame double-hung windows flank the entrance. A stepped side-gable roofed open carport projects to the right, supported on decorative metal stanchions.

45. (C) **601 Cleveland Street**
House

c.1945

One-story, side-gable frame dwelling has asphalt-shingled roof with closed eaves, clad in asbestos-siding and rests on a brick foundation. A projecting front gable shelters a small porch, supported on square wooden columns resting on brick piers connected with plain wooden balustrade, accessed by steps to the side. Windows are 4/4 wood-frame double-hung in plain wood surrounds. Three-bay asymmetrical façade has w-d-ww. A sloped, flat-roof, open carport projects to the left side, supported by decorative metal poles.

46. (NC) **602 Cleveland Street**
House

c.1960

Ranch

One-story frame dwelling has side-gable, asphalt-shingle roof with stepped side-gable addition and enclosed garage to the right, all on brick foundation. Windows are 8/8 vinyl-frame double-hung with applied shutters. Asymmetrical façade has six bays; ww-d-ww. Door is modern six-panel metal in wood surround.

United States Department of the Interior
National Park Service

**NATIONAL REGISTER OF HISTORIC PLACES
CONTINUATION SHEET**

Section: 7 Page: 19 Itta Bena Historic District
Itta Bena, Leflore County Mississippi

-
47. (NC) **604 Cleveland Street** c.1980 **Ranch**
House
One-story brick-clad dwelling with side-gable asphalt-shingle roof and flanking projecting front gables on a concrete slab. Windows are paired 6/6 either wood or vinyl-frame double-hung with applied shutters. A small recessed entry is supported by segmented arched posts and shelters a modern panel door. The gable to the right shelters an open carport supported by brick columns.
48. (C) **605 Cleveland Street** c.1920 **Craftsman**
House
One-story pyramidal hip-roofed asphalt-shingle frame dwelling clad in asbestos-shingles on a brick foundation. Wide eaves expose rafter tails, the full-width undercut front porch has the left third enclosed and remainder screened. A central hip-roof dormer contains a double vent. To the left is a shed roof open car-port supported by wood poles. Windows are 1/1 metal-frame double-hung. Door has single-light transom. Other fenestration is obscured by screen.
49. (C) **606 Cleveland Street** c.1945
House
One-story side-gable frame dwelling on brick foundation has 6/6 wood-frame double-hung windows with plain wood surrounds, open eaves and exposed rafter tails. It is clad in asbestos siding with corner boards. Asymmetrical three-bay façade is w-d-w. Wooden door has three horizontal lights over three panels and is offset to the right with a metal awning shading the entrance.
50. (C) **607 Cleveland Street** c.1930 **Craftsman**
House
One-story pyramidal roofed asbestos-shingle clad, frame dwelling with central hip-roof dormer on façade, rests on a brick foundation. Undercut porch has been enclosed to the right and screened to the left. Fenestration is obscured by screening. Visible window is 6/6 wood-frame double-hung. An open car-port projects to the right.
51. (C) **100 Cotton Street** c.1950
House
One-story side-gable dwelling has asphalt-shingle roof and asbestos-siding on brick foundation. Windows are 6/6 simulated divide vinyl-clad replacements in plain surrounds. Four bay asymmetrical façade: w-w-d-w. Small gablet shelters front entry, supported on slender square wood posts on concrete deck, accessed by two concrete steps. Slightly offset modern metal door has four raised panels and is flanked by a double window to the left and single to the right.

**United States Department of the Interior
National Park Service**

**NATIONAL REGISTER OF HISTORIC PLACES
CONTINUATION SHEET**

Section: 7

Page: 20

Itta Bena Historic District
Itta Bena, Leflore County Mississippi

52. (C) **101 Cotton Street** **c.1958** **Ranch**
House

One-story side-gable dwelling with front facing projecting gable to the right has asbestos cladding and asphalt shingle roof. Shed roof shelters three-quarter length porch, supported on decorative metal stanchions. Under porch roof are two sets of double 6/6 metal-frame double-hung windows with applied shutters. An asymmetrically placed entry door is flush modern wood. Front facing gable end contains a matching set of double windows along with a square vent in the peak.

53. (NC) **201 Cotton Street** **c.1980** **Ranch**
House

One-story stepped side-gable asphalt-shingle residence with brick cladding and front facing gable to the left rests on a brick foundation. In gable front is a 20-light fixed window with applied shutters, vinyl siding in pediment and peak vent. Side gable projects to shelter entrance on side gable block, supported by a single square post. Façade is five bay; w-d-w-w-w. Other windows are 4/4 metal-frame double-hung with applied shutters. Small addition to the right is under a step gable.

54. (NC) **100 Dewey Street** **c.2005**
Post Office

One story variegated red brick clad modern post office with multi gable asphalt-shingle roof, and brick columns which support porches on the west and north elevations. Yellow brick accent courses span between the brick columns and over lunette vents in gable ends.

55. (C) **202 Dewey Street** **c.1910**
House

One-story frame dwelling has an asphalt-shingle clad hip roof with front facing pedimented gable over a cut-a-way bay to the left and has been clad in aluminum siding. Windows in the bay window have been removed and replaced with a single, centered aluminum frame fixed window flanked by aluminum frame double hung with applied shutters. A shed roof porch supported on square wood posts which rest of a concrete deck shelters a porch to the right of the bay. Façade has three bays; w-d-w. The wood panel door has a single large light, single-light transom and sidelights.

United States Department of the Interior
National Park ServiceNATIONAL REGISTER OF HISTORIC PLACES
CONTINUATION SHEET

Section: 7

Page: 21

Itta Bena Historic District
Itta Bena, Leflore County Mississippi

56. (C) **Fitzhugh Street House** c.1950
One story side gable frame dwelling on a concrete slab foundation is clad in board and batten wood siding over a low wall of applied stone. Asymmetrical façade projects at each end to contain double band windows and recesses in the center to shelter the main entrance door and two sets of 4-light full length wood-frame casement windows topped by single light transoms. Gable roof drops pitch to cover the open carport to the far right, which is supported by metal poles set atop a low wall clad in matching applied stone.
57. (C) **121 Front Street East Commercial Building** c.1905
One-story brick commercial building with decorative corbelling in flat parapet over three stringcourses; a single, double and dentilled. Three part transom; three light flanked by two lights, all in wood frame has been boarded. Five-bay façade consists of w-w-d-w-w. Centered recessed doorway is flanked by canted panes then display windows over low paneled wooden wall. A flat awning is supported by four round wooden poles and bears signage for the market.
58. (C) **123? Front Street East Commercial Building** c.1905
One-story brick commercial building with flat parapet with decorative corbelling over three stringcourses; a single, double and dentilled. Six-light transom has been boarded and storefront covered with wooden panels.
59. (NC) **125? Front Street East Commercial Building** c.1905
One-story brick with flat parapet and decorative corbelling over three stringcourses; a single, double and dentilled. Roof has collapsed and only front façade remains. Storefront has been in filled with wood panels.
60. (C) **127/129 Front Street East Commercial Building** c.1905
One-story painted brick with brick parapet (half gone), with detailing that matches 121-125 Front Street, divided into two storefronts. To the left, a centered recessed double-leaf door with single-light over recessed wood panel, is topped by a two-light transom and flanked by canted single display windows over recessed wood panels. There is bead-board in the recessed entry ceiling. Double light transoms top the windows and are in turn topped by two-light larger transom windows, all in wood frames. A sloped metal awning is supported with brackets and decorative metal stanchions. To the right, vinyl horizontal siding covers the storefront, with a centered recessed double-leaf 2-light over recessed paneled door topped by a 2- light transom.

United States Department of the Interior
National Park Service

**NATIONAL REGISTER OF HISTORIC PLACES
CONTINUATION SHEET**

Section: 7

Page: 22

Itta Bena Historic District
Itta Bena, Leflore County Mississippi

61. (C) **131/133 Front Street East** **c.1905**
Commercial Building
One-story painted brick with flat parapet and decorative corbelling, separated into two storefronts. Both storefronts have single light transoms which top the entryways and display windows, all have been boarded. Both have recessed entries with double-leaf wooden single-light over recessed panel doors flanked by single light-over-recessed panel canted windows flanked by single light display windows over double recessed panel low walls. The store front to the west is sheltered by a flat awning supported by simple wooden poles, to the east is sheltered by a flat awning supported by plain metal poles and the door has double leaf ornate wooden screen doors.
62. (C) **135 Front Street East** **c.1905**
Commercial Building
One-story brick commercial building with stepped sloped roof, corbelling in flat parapet with metal cap. Centered recessed entry is flanked by canted single fixed panes then single fixed display windows to the front over a low wooden single panel wall. Double transoms in wood frames top all windows. Doorway has been replaced with infill and modern metal door. Corrugated metal awning supported by brackets covers boarded transoms.
63. (NC) **137? Front Street East** **c.1990**
One-story metal commercial building clad in vertical seam metal siding, with side-gable, low slope roof on concrete slab. East elevation contains an overhead door and entry door. A shed-roofed addition extends to the north (street elevation). The three bay façade contains w-d-w, an off center metal panel door flanked by 6/6 double-hung wood windows.
64. (C) **207 Front Street West** **c.1915**
Commercial Building
One-story painted brick commercial building has flat parapet and double recessed vents over boarded transoms. Storefront has been altered; is recessed with rustic poles and bracket supports. Centered entryway contains double doors with single vertical panes and double transom. Low wooden vertical board wall. Original metal storefront pilasters bear the stamp; "Chattanooga Roofing & Foundry Co."
65. (C) **211 Front Street West** **c.1905**
Southern Café
One-story painted brick with flat parapet and decorative corbelling at cornice. Faded painted sign panel reads "Southern Café" over six panel transom in wood frames (one boarded and two filled with window a/c units). Storefront features flush, centrally located double door entrance. Doors have single vertical pane over wood panel. Fixed display windows flank the entry over two panel wood low walls. A flat suspended awning is supported by two square wooden poles.

United States Department of the Interior
National Park Service

**NATIONAL REGISTER OF HISTORIC PLACES
CONTINUATION SHEET**

Section: 7 Page: 23 Itta Bena Historic District
Itta Bena, Leflore County Mississippi

66. (C) **213 Front Street West** c.1909
Commercial Building
One-story brick commercial building with corbelled, flat parapet. Three-part transom over storefront contains metal infill in center portion, flanked by six-light panels. Seven-bay storefront, w-w-w-d-w-w-w, contains recessed central entry with double wooden doors with single vertical pane over wood panel. Door is flanked by canted fixed windows followed by display windows over wood panel low wall. Metal pilasters bearing "Chattanooga Roofing & Foundry Co." flank recessed doorway. A flat awning is suspended over storefront.
67. (C) **215 Front Street West** c.1919
Commercial Building
One-story rusticated cement block with decorative basket-weave pattern masonry at cornice and metal cap on flat parapet. Three-bay facade consists of w-d-w, symmetrically placed arched openings have triple rowlock courses. All have been altered; the center one contains wood in-fill and a modern door, the opening to the left in filled with wood panels and the one to the right with a modern fixed pane over wood panel. A flat suspended awning shelters the storefront.
68. (NC) **217 Front Street West** c.1909
Commercial Building
One-story flat roof commercial building has had a metal slipcover and flat metal awning applied, which compromises architectural integrity. Eleven bay storefront contains a central single modern full glazed entry door flanked by five fixed metal frame windows over metal low wall.
69. (NC) **219 Front Street West** c.1909
Commercial Building
Two-story commercial building with flat parapet and stepped sloping roof to rear. Stucco has been applied to all elevations, on front façade four deep horizontal scores across upper level. Flat central panel is flanked by pairs of triple horizontal metal frame windows. All fenestration (large central opening flanked by single windows) on first story has been in filled with cement block. There is evidence of a missing awning or architectural element between first and second story. Alterations have damaged the architectural integrity of this building.
70. (C) **301 Front Street West** c.1940
Commercial Building
One-story brick service building with stepped parapet capped with cast concrete. Three symmetrically placed overhead doors with 6/6 metal frame window and six panel metal entry door. Above central door "CAR SERVICE CENTER" has been applied in raised letters.

United States Department of the Interior
National Park ServiceNATIONAL REGISTER OF HISTORIC PLACES
CONTINUATION SHEET

Section: 7

Page: 24

Itta Bena Historic District
Itta Bena, Leflore County Mississippi

-
71. (C) 201 George Street c.1945
House
One-story frame dwelling with side-gable roof of asphalt shingles is clad in asbestos-shingle siding and rests on a brick foundation. Eaves are open and reveal rafter tails. Façade has four bays; d-ww-ww-ww. Windows are paired 6/1 wood-frame double-hung in wood surrounds. Door has been replaced with a modern six raised-panel flush in wood surround. Entry is sheltered by a bracketed eyebrow stoop.
72. (NC) 300 George Street c.1980 Ranch
House
One-story brick and vertical siding clad dwelling with side-gable roof of asphalt-shingles rests on a brick foundation. Front slope of roof extends over the left half of façade to shelter a porch, supported on brick columns resting on a concrete deck. Windows are 2/2 horizontal pane metal-frame double-hung with applied shutters. Asymmetrical façade has seven bays; d-www-w-w-w. Door has two horizontal lights over three raised panels.
73. (C) 303 George Street c.1940 Craftsman
House
One-story frame dwelling with cross-gable roof of asphalt-shingles is clad in masonite siding, rests on a brick foundation. A secondary gable projects and covers a stoop which shelters the entrance and is supported on decorative metal stanchions. A shed roof extends from the central gable to the right to shelter a half-width porch, supported on matching stanchions which rest on a concrete deck. Asymmetrical façade has three bays; ww-d-w. Windows are 2/2 metal-frame double-hung in wood surrounds. Door details are obscured by a screen door.
74. (C) 304 George Street c.1950
House
One-story frame dwelling with a pyramidal hip roof of asphalt-shingles, clad in masonite siding rests on a brick foundation. Symmetric façade has three bays; w-d-w. Windows are 2/2 horizontal light metal-frame double-hung with applied shutters. The door has four raised panels topped by three small rectangular lights. A shed roof shelters the doorway, supported by plain wood posts resting on the cement deck. An open carport, with shed roof on metal poles projects to the right.

**United States Department of the Interior
National Park Service**

**NATIONAL REGISTER OF HISTORIC PLACES
CONTINUATION SHEET**

Section: 7 Page: 25 Itta Bena Historic District
Itta Bena, Leflore County Mississippi

-
75. (NC) **305 George Street** c.1970
House
One-story asphalt-shingle front-gable roof, frame dwelling on a brick foundation is clad in brick with masonite siding in the gable and flared vergeboard. Windows are 1/1 double-hung with metal security grates. Full-width undercut porch is supported with decorative metal posts resting on a concrete deck. Façade is symmetric w-d-w. Door is double-leaf with a single fixed pane over raised panel. An open carport projects to the left, supported on plain metal poles.
76. (C) **306 George Street** c.1950
House
One-story asphalt-shingle side-gable frame dwelling rests on a brick foundation, and is clad in masonite siding. Windows are 2/2 horizontal metal-frame double-hung with applied shutters. A small shed roof projects over the slightly offset to the right entryway, supported by simple square wooden posts resting on a cement deck. Façade has three bays w-d-w.
77. (C) **404 George Street** c.1940 **Craftsman**
House
One-story asphalt-shingle side-gable frame asbestos-shingle clad dwelling rests on a brick foundation. Windows are replacement pairs of single pane casements in metal frames with applied shutters. A central front facing bracketed gable projects to shelter the entrance, supported by square columns resting on low square bases on a concrete deck resting on brick piers and accessed by three wooden steps. An open carport with a side-gable asphalt-shingle roof, supported on matching columns is recessed to the left.
78. (NC) **406 George Street** c.1980 **Ranch**
House
One-story, asphalt-shingle hip-roof brick-clad dwelling rests on a concrete foundation. Eaves are boxed and top a soldier course. Windows are 3/1 with vertical top lights, wood-frame double-hung with applied shutters and a rowlock sill. Three-quarter width recessed porch is to the right, supported on decorative metal stanchions with brackets, then terminates with an open carport. Symmetric façade contains ww-d-ww.
79. (NC) **200? Haley Street** c. 2008
House
One-story hip-roofed frame dwelling with brick veneer on concrete foundation. Five-bay façade is w-w-d-w-w, with the entrance slightly recessed. Windows are 6/6 simulated light vinyl with applied shutters. Metal door has six-lights over four raised panels.

United States Department of the Interior
National Park Service

**NATIONAL REGISTER OF HISTORIC PLACES
CONTINUATION SHEET**

Section: 7 Page: 26 Itta Bena Historic District
Itta Bena, Leflore County Mississippi

-
80. (NC) **201? Haley Street** c.1960
House
One-story cross-gable asphalt-shingle roof frame dwelling with brick veneer on brick foundation. Front facing gable to the left extends over enclosed garage. Shallow shed roof extends over screened porch with wide cornice. Visible window is 2/2 horizontal pane wood-frame double-hung.
81. (C) **300 Haley Street** c.1940
House
One-story gable-on-hip asphalt-shingle roof frame dwelling is clad in vinyl siding and has small central front facing gable over full width screened porch on brick foundation. Fenestration obscured by screen porch, windows on the side are 1/1 double-hung vinyl with applied shutters.
82. (C) **301 Haley Street** c.1940 **Craftsman**
House
One-story front facing gable-roof frame dwelling with step off-set gable over screened porch, both with brackets and wide, closed eaves. Clad in drop-siding on a brick foundation, windows are 1/1 wood-frame double-hung in plain wood surrounds. A broken slope covers a small addition to the left is also bracketed. Five bay façade is w-w-d-w-w.
83. (C) **303 Haley Street** c.1940
House
One-story frame dwelling with front gable asphalt-shingle roof with wide bracketed eaves is clad in lap siding. Step front-gable projects over three quarter-width porch supported on bracketed turned posts with lattice balustrade. Symmetric four bay façade; w-d-w-w. Windows are 4/4 wood-frame double-hung in plain wood surrounds. Door details are obscured by screen door.
84. (C) **108 Humphreys Street East** c.1915
Commercial Building
Two-story painted rough-faced cement block commercial building with flat parapet topped with a metal cap. Four-bay second story contains a pair of windows flanked by single windows. All have been replaced with undersized panes and wood in-fill and have cast concrete sills and headers. Main entry contains double single-light over recessed panel doors. Canted full-length fixed panes flank the doorway and adjoin large fixed display windows over low wooden knee wall. Secondary entrance is single solid wood door to the left. A sloping shingled awning shelters entire front façade and obscures boarded four-light transom.

**United States Department of the Interior
National Park Service**

**NATIONAL REGISTER OF HISTORIC PLACES
CONTINUATION SHEET**

Section: 7 Page: 27 Itta Bena Historic District
Itta Bena, Leflore County Mississippi

85. (NC) **110 Humphreys Street East** c.1925
(Old) Post Office
Two-story brick commercial building with inset rectangular panel for signage under soldier course header, flanked by basket-weave masonry panels. Three symmetrically placed second story windows contain replacement 1/1 undersized windows and partial infill. Former transom has been either in filled or covered and contains three vents, topped by a basket-weave pattern string course. Entry consists of three-light transom over double one-pane doors to the left and a double fixed pane window to the right. The remainder of the storefront has been enclosed with unadorned painted wood. A flat suspended awning shelters the storefront. Unsympathetic alterations have damaged the integrity of this building.
86. (C) **112 Humphreys Street East** c.1905
Commercial Building
Two-story masonry commercial building stuccoed and scored to resemble stone block construction. Two inset panels in parapet for signage contain round vents. Parapet capped with metal. Three symmetrically placed arched headed window openings contain keystones. The windows have been replaced with double vertical panes and partially in-filled with wood. Between the second story windows and storefront are four arched partial window openings with double horizontal panes topped by in-fill. Ground level store front contains central four-light transom flanked by three-light transoms; all have been either boarded or painted over. Original metal pilasters are stamped with "Chickasaw Iron Works, Memphis, TN." All ground level fenestration has been either changed or covered with vertical wood panels and an entry placed to the left.
87. (C) **114 Humphreys Street East** c.1920
Commercial Building
One-story brick commercial building with triple rows of corbelling along cornice under a brick cap. Flat roof slopes to rear. Three bay w-d-w with recessed double single-pane over raised panel centered doors flanked by canted six-over-one fixed panes followed by six-over-one pane display windows over wood paneled knee wall at sidewalk. Original metal storefront elements are stamped, "Christopher & Simpson. St. Louis, MO" A sloped metal awning shades the street elevation.
88. (C) **116 Humphreys Street East** c.1909
Commercial Building
One-story brick commercial building with triple rows of corbelling along cornice under a brick cap. Flat roof slopes to rear. Three bay w-d-w with recessed double single-pane over panel centered doors flanked by canted six-over-one fixed panes followed by six-over-one pane display windows over wood-paneled knee wall at sidewalk. Original metal storefront elements are stamped, "Christopher & Simpson. St. Louis, MO"

United States Department of the Interior
National Park Service

**NATIONAL REGISTER OF HISTORIC PLACES
CONTINUATION SHEET**

Section: 7 Page: 28 Itta Bena Historic District
Itta Bena, Leflore County Mississippi

89. (NC) **118 Humphreys Street East** c.1909
Commercial Building
One-story significantly altered commercial building with brick veneer on lower portion and stucco in parapet with cast stone cap. Metal slipcover contains signage over modern storefront composed of double glazed doors flanked with two-pane metal framed windows. Brick has been applied to remainder of facade.
90. (NC) **120 Humphreys Street East** c.1970
Union Planter's Bank (Regions Bank)
One-story brick veneer unadorned flat-roof modern commercial building with recessed entryway with soldier course header asymmetrically located to the left on street elevation.
91. (NC) **118 Humphreys Street West** c.1980
Service Station
One-story modern gas station with canopy extending out over gas pumps and a two-bay car wash added to east end of main building.
92. (C) **200 Humphreys Street West** c.1905
Bank of Itta Bena (Now City Hall)
Two-story brick commercial building has parapet with cast concrete cap, bracketed and dentilled cornice and 2/2 wood-frame, double-hung windows with keystones and continuous sill on the second story. Two bay façade d-w fronts Humphreys Street. First story windows consist of a series of recessed arched windows with in-filled headers over a single central light over eight small square lights, flanked by vertical side-lights. A wide stone water table underlines first story windows, with a narrow belt course topping them. Entrance is recessed and flanked with engaged stone columns within niches, set atop low brick walls that terminate at the water table. Entrance is composed of double leaf, single-light wooden doors, sheltered by a contemporary hip-roof, asphalt-shingle clad portico supported by square wooden poles.
93. (C) **204? Humphreys Street West** c.1900
Commercial Building
Two-story brick commercial building with sloped flat roof and corbelled brick detailing at cornice. Symmetric façade contains three hooded, arched boarded windows on the second story (middle opening is longer and narrower, may have been door originally), all topped by a single stringer course. The first story storefront contains recessed double leaf, one-light doors flanked by two canted large fixed panes, then single-pane and terminates with an entry door to right and larger pane to left over a low cement knee wall. Original metal pilasters are marked with 'Chattanooga Roofing and Foundry Co.' Damage to the façade between first and second stories indicates a missing architectural element.

**United States Department of the Interior
National Park Service**

**NATIONAL REGISTER OF HISTORIC PLACES
CONTINUATION SHEET**

Section: 7 Page: 29 Itta Bena Historic District
Itta Bena, Leflore County Mississippi

94. (C) **206 Humphreys Street West** c.1915
Commercial Building
One-story brick commercial building with sloped flat roof has a corbeled cornice and symmetrically placed rectangular vents. A flat suspended awning shelters the entire façade. Over the awning are three triple-light, wood-framed transoms, currently boarded. Storefront features central recessed double-leaf, single pane wooden doors in wood frame, flanked by canted single panes over low wood knee wall, then fixed display windows over low wall. Metal pilasters flank the entrance and project above awning to terminate at the top of the transom. Pilasters are marked with 'Chattanooga Roofing and Foundry Co.'
95. (C) **208/210 Humphreys Street West** c.1920
Commercial Building
One-story masonry building contains two symmetrical store fronts. Flat parapet is capped with cast stone. Each storefront contains a centrally located sign panel outlined with raised masonry over a six-light wood transom. The storefront to the right contains centered double, single-light wooden doors flanked by canted single fixed panes then display windows on low brick knee wall. The storefront to the left has been altered to contain a modern metal single glazed door on each end which flank three large fixed panes over low brick wall with wooden sill. Both storefronts have flat suspended awnings under the transoms.
96. (C) **212/218 Humphreys Street West** c.1940
Commercial Building
One-story painted masonry commercial building with metal over brick cap on flat parapet. This building is divided into four storefronts, each with standing seam awning supported on brackets which shelter six-light transoms over each storefront entrance. The storefront to the far right features an altered entrance with one centered modern door flanked by in filled wood panels that extend to grade. Next storefront contains a centered boarded doorway flanked by boarded windows over low brick wall. The third (Young's Grocery) has off center boarded painted wood doorway with single light transom to the left, and double boarded window openings over low brick knee wall to the right. The storefront to the far left contains a modern metal boarded door to the right and triple window frames (boarded) over low brick knee wall.
97. (NC) **220? Humphreys Street West** c.2004
Storage Building
One of two one-story vertical standing seam metal storage buildings with 10 overhead doors along the east side. Almost flat roof slopes slightly from center, with gable end facing street. A metal single pane over panel door is flanked by I/I metal-frame double-hung windows.

**United States Department of the Interior
National Park Service**

**NATIONAL REGISTER OF HISTORIC PLACES
CONTINUATION SHEET**

Section: 7 Page: 30 Itta Bena Historic District
Itta Bena, Leflore County Mississippi

98. (NC) **220? Humphreys Street West
Storage Building**

c.2004

One of two, one-story vertical standing seam metal storage building with 10 overhead doors along the east side. Almost flat roof slopes slightly from center, with gable end facing street.

99. (C) **101 Lake Shore Street
American Legion Hall**

c.1940

Two-story frame building with front-gable asphalt-shingled roof and asbestos-shingle siding resting on a cement block foundation. Main entrance faces Lakeshore and consists of double 12-light wood doors recessed and sheltered by a projecting gabled stoop. Entrance is accessed by four cement stairs. Flanking the entrance are 6/6 wood-frame double-hung windows with plain wood surrounds on first floor with matching second story windows. A small one-story gable-roofed addition has been attached to the main block to the north.

100. (C) **103 Lake Shore Street
House**

c.1915

Free Classic

One-and-a-half story frame dwelling with complex hip-roof rests on a brick foundation with clapboard and brick veneer cladding. Front façade features a staggered wood-shingle clad, conical-roofed turret topped with a pinnacle to the left and gabled, pedimented dormer containing a 1/1 wood-frame double-hung window that pierces a smaller secondary hip roof. The turret contains one window on the second story and three windows on the first. The front entrance is a single-leaf wooden door with oval pane over wood panel with single-light transom. A three-quarter width front porch wraps to the left with shed roof supported on simple Doric columns (paired, flanking the entrance). All windows are 1/1 wood-frame, double-hung in plain surrounds. An open carport with shed roof supported by metal poles extends to the left.

101. (C) **105 Lake Shore Street
House**

c.1910

Neo-Classical

One-story asphalt-shingle pyramidal-hip roof cottage, clad in drop-siding rests on a brick foundation. Projecting front porch has a hip-roof supported on simple unfluted Doric columns with wooden deck. Windows are 1/1 wood-frame double-hung in plain wood surrounds. Symmetric façade has four bays; w-d-d-w. Twin 15-light front doors are symmetrically placed and flanked by windows. A brick chimney pierces the roof slope near the peak. There is a shed roof addition to the rear.

**United States Department of the Interior
National Park Service**

**NATIONAL REGISTER OF HISTORIC PLACES
CONTINUATION SHEET**

Section: 7 Page: 31 Itta Bena Historic District
Itta Bena, Leflore County Mississippi

-
102. (C) **107 Lake Shore Street** **c.1910** **Free Classic**
House
One-story L-front Queen Ann, brick-clad residence with gable front that contains a three-sided 4/4 wood-frame double-hung bay window under a segmented shingled roof with wide paneled cornice. A flat roofed porch fills the ell, supported on simple unfluted Doric columns under a wide entablature adorned with hyphens. The entry is located at the inside corner of the ell and contains a single-glazed wooden door with diamond pattern sidelights over a single panel. A shed roofed addition to the rear attaches to an open carport.
103. (NC) **107 1/2 Lake Shore Street** **c.1970**
House
One-story front gable residence with beveled wood siding over low brick veneer wall. Three-pane horizontal windows in metal frame symmetrically placed on front façade. Entrance is to right side under flat roof stoop.
104. (C) **109 Lake Shore Street** **c.1910** **Free Classic**
House
One-story multi-hip roof residence has drop-siding cladding and rests on a brick foundation. Front gable over porch contains applied, raised-relief decorative work in peak, and the wide entablature over the 3/4 length wraparound porch contains fish-scale and coursed wood shingles. Porch is supported by slender unfluted Doric columns and shelters entrance which contains a wooden door with single vertical pane, single sidelights and transom. Windows are 1/1 and multi-light leaded decorative panes over one, in wood frames and surrounds.
105. (C) **113 Lake Shore Street** **c.1920** **Craftsman**
House
One story hip-roof, drop-sided residence on brick foundation with applied lattice has front gable projection that shelters the inset porch and entrance. Wide overhangs have exposed rafter tails and front gable has brackets at corners and a central vent. The front porch is supported with columns set on low wood-clad knee wall. Front façade is four bay; w-w-w-d. All windows are 1/1 wood-frame double-hung in plain wood surrounds. The entry door is one pane over double wood panels with a screen door.
106. (C) **115 Lake Shore Street** **c.1959**
House
One story hip roof frame dwelling with vertical masonite siding over low brick veneer wall topped by a rowlock course on undetermined foundation. Centrally located entry door is flanked by 1/1 metal-frame double-hung windows in turn flanked by matching triple windows. A shed roof open carport is to the left, supported on slim metal poles.

**United States Department of the Interior
National Park Service**

**NATIONAL REGISTER OF HISTORIC PLACES
CONTINUATION SHEET**

Section: 7 Page: 32 Itta Bena Historic District
Itta Bena, Leflore County Mississippi

107. (C) **117 Lake Shore Street** **c.1915**
House
One-story cross gable frame residence has clapboard cladding and decorative wood saw-tooth and staggered shingles in front gable peak. Shed-roof supported on metal poles shelters front entrance, a wood door with single glazed light over two wood panels, triple pane sidelights over panel and single-light transom. Windows are 1/1 wood-frame double-hung with applied shutters Brick foundation contains vents.
108. (C) **201 Lake Shore Street** **c.1940** **Minimal Traditional**
House
One-story, side-gable, board-and-batten clad residence over brick foundation has stepped gable to the left to cover enclosed porch. Small front facing gablet has flared vergeboard, shelters the entrance; a six-panel wood door, and is supported on metal poles. Windows are paired 6/6 wood-frame double-hung.
109. (NC) **205 Lake Shore Street** **c.1970** **Ranch**
House
One-story, side-gable brick veneer and board-and-batten siding clad ranch with inset porch to the left which shelters the entrance; a six-panel metal door. The porch is supported with rustic wooden posts and brackets. Windows are horizontal metal-frame ribbon with rowlock sills and applied shutters and on the porch, 6/6 vinyl-clad double-hung. Wide eaves are boxed.
110. (C) **207 Lake Shore Street** **c.1940**
House
One-story pyramidal hip-roof residence clad in asbestos-shingles on a brick foundation. Façade is asymmetrical, with roughly centered 15-light door, a paired 6/1 wood-frame, double-hung windows to the left. The windows to the right of the door have been replaced with a 15-light wood framed fixed window flanked by 1/1 wood-frame, double-hung in plain surrounds. The entrance is sheltered by a metal awning supported by metal brackets. A shed roofed open carport is to the left, supported by slender metal poles on brick piers.
111. (C) **211 Lake Shore Street** **c.1910**
House
One-story hip-roofed residence with front and side gables and clapboard siding over brick foundation. Low hip-roof projects over the porch which wraps to the right, supported on slender square columns and has wooden deck. Windows are 1/1 wood-frame double-hung with plain wood surrounds. Entry is slightly off-set to the right and contains a wood door with large oval pane and simple pediment. All windows and doors have protective metal grates.

United States Department of the Interior
National Park Service

**NATIONAL REGISTER OF HISTORIC PLACES
CONTINUATION SHEET**

Section: 7 Page: 33 Itta Bena Historic District
Itta Bena, Leflore County Mississippi

112. (C) **215 Lake Shore Street
House**

c.1910 Queen Anne

One-story frame Queen Anne dwelling with asphalt-shingle, gable-on-hip roof and drop-siding rests on brick foundation with front gable over a cut-a-way bay window. Decorative shingles, verge board and spindles adorn the bay projection which includes three 2/2 wood-frame double-hung windows, prominent vertical corner boards and a cut-out quatrefoil centered in the gable. To the left of the bay window is a screened porch with low sloping shed roof. Square wooden columns flank the entrance to the porch which leads to the main entrance; a single-leaf wooden door with large oval pane flanked by 2-pane over wood-panel sidelights and boarded 2-light transom that has been boarded or painted. Plain brick chimneys pierce the north and south slopes. The south elevation contains a flush pent gable with a single 2/2 window.

113. (C) **217 Lake Shore Street
House**

c.1959

One-story frame dwelling with stepped, side-gable asphalt-shingle roof and asbestos-siding over a brick foundation. Flat-roof stoop supported by decorative metal poles shelters the off-center main entrance; a four-panel modern wood door. To the left of the door is a fixed-pane window flanked by 2/2 wood-frame, double-hung windows. To the right of the door is a 12-pane wood-frame fixed window. The addition to the right contains two 1/1 wood-frame double-hung windows. A smaller addition to the left contains two 2/2 wood-frame double-hung windows.

114. (NC) **303 Lake Shore Street
House**

c.1980

One-story, brick clad dwelling with asphalt-shingle, side-gable roof and low slope shed roof over front porch supported on decorative metal stanchions. An attached garage to the left has a step-gable roof is topped with a small cupola with vent. Windows are 6/6 wood-frame double hung with applied shutters.

115. (C) **305 Lake Shore Street
House**

c.1920 Craftsman

One-story asphalt-shingle, front-gable roof frame dwelling has wide eaves with brackets, imbricated wood shingles in gables and 4 vertical panes over one, wood-frame double-hung windows, rests on a brick foundation. Both the main gable and projecting gable over front porch contains subtle decorative elements at the edge of the verge boards. The main gable contains a one-light window at peak. Porch is supported by stout square columns on brick piers.

**United States Department of the Interior
National Park Service**

**NATIONAL REGISTER OF HISTORIC PLACES
CONTINUATION SHEET**

Section: 7

Page: 34

Itta Bena Historic District
Itta Bena, Leflore County Mississippi

116. (C) **307 Lake Shore Street**
House

c.1910

Queen Anne

One-story asphalt-shingle, cross-gable frame dwelling is clad in asbestos-siding over a brick foundation. Projecting cutaway bay window to the right contains triple 9/9 wood-frame double-hung windows. A small pent gablet to the left contains a vent. A partial width shed-roofed porch is contained within the ell and shelters the entrance, which is obstructed by bushes. Eaves on the porch and to the left of the porch are open with exposed rafter tails, and are closed on the gable end. Windows to the left are 6/6 wood-frame double-hung.

117. (C) **311 Lake Shore Street**
House

c.1930

Craftsman

One-story frame dwelling with stepped side-gable asphalt-shingle roof and projecting gable over screened front porch. Clad in drop-siding with 6/1 wood-frame double-hung windows, eaves are wide and open with knee braces at corners. The front gable contains a single, central vent. Porch has been screened and is supported with battered square wood columns atop brick piers. Rectangular brick chimneys pierce the east slope and ridge.

118. (NC) **313? Lake Shore Street**
House

c.1910

Significantly altered frame dwelling has brick veneer with aluminum cladding on the porch, asphalt-shingle hip roof with two front-facing pent gables, both contain decorative bracket in peak and centered vent. A low sloping shed roof shelters the partial front porch and left side of façade, supported by metal poles. Windows are 6/6 wood-frame double-hung with applied shutters. Entry door is modern six raised-panel wood. Asymmetrical façade has six bays.

119. (NC) **315 Lake Shore Street**
House

c.1910

One-story frame dwelling has asphalt-shingle clad central hip-roof with two gables projecting from south elevation (left side), and two gablets on the east (street) elevation, with the one on the right slightly larger. Both gablets contain a single central gothic arched vent and clapboard siding. The entire façade has been enclosed in a hip-roofed screen porch with modern brick piers and metal frames that obscures fenestration. A brick chimney pierces the south slope of the central hip roof. An open carport projects from the rear north elevation. The extensive alterations damage the architectural integrity of this residence.

**United States Department of the Interior
National Park Service**

**NATIONAL REGISTER OF HISTORIC PLACES
CONTINUATION SHEET**

Section: 7 Page: 35 Itta Bena Historic District
Itta Bena, Leflore County Mississippi

120. (C) 317 Lake Shore Street c.1940
House
One-story frame dwelling with side-gable asphalt-shingled roof, clad in asbestos-shingle siding. Roof extends 3/4 length of façade and shelters small inset porch with entry door, supported with wood X brackets. Asymmetrical façade has four bays; w-d-w-w. Windows are wood-frame double-hung 8/8 and 6/6 with applied shutters. The south elevation contains an exterior tapered brick chimney, and to the rear an attached side gable addition with 12/12 and 6/6 metal-frame double-hung windows. Lot is nicely landscaped with mature trees and enclosed with wrought iron fence with gate.
121. (NC) 319 Lake Shore Street c.1980 Ranch
House
One-story frame dwelling with asphalt-shingle side-gable roof with projecting front gable, vertical masonite siding on brick foundation. Six bays are w-w-d-w-w-w. Windows are double vertical-pane wood-frame in plain surrounds in the front gable, then fixed 15-light flanked by 8-pane sidelights and 12-pane fixed. Entry is sheltered by wide overhang that extends the length of the façade. A brick planter also extends the length of the façade.
122. (NC) 321? Lake Shore Street c.1980 Ranch
House
One-story, brick-clad, side-gable dwelling with central front-facing gable that contains decorative verge board, central six-light fan in vertical aluminum clad peak. Front gable projects to shelter partial front porch supported on four round columns. Façade is w-w-w-d-w. Windows are 8/8 and 6/6 wood-frame, double-hung with applied shutters and door is 15-light wood.
123. (C) 400 Lakeside Drive c.1935
Teacher's House
One-story side-gable, asphalt shingled roof frame dwelling with vinyl siding rests on a brick foundation. Façade is symmetrical, with the central doorway flanked by pairs of 6/6 wood-frame double-hung windows. A front facing gablet shelters the doorway, supported on square wood posts sitting on the concrete stoop. The east elevation contains a flat roofed porch with lattice and an exterior brick chimney.
124. ?? Lakeside Street c.1940
House
A. (C) House
One-story, frame dwelling has a side-gable roof of asphalt-shingles with open eaves and exposed rafter tails on a brick foundation. Symmetrical façade w-d-w, has centrally located door sheltered by a projecting front gable supported on turned posts. Door has three vertical lights over 3 horizontal panels in a plain wood surround. Windows are paired 3-vertical over single-pane double-hung wood-frame in plain wood surrounds.

United States Department of the Interior
National Park Service

NATIONAL REGISTER OF HISTORIC PLACES
CONTINUATION SHEET

Section: 7

Page: 36

Itta Bena Historic District
Itta Bena, Leflore County Mississippi

B. (NC) Garage

c. 1970

One-story single car garage has pyramidal asphalt-shingle clad roof and drop siding with corner boards rests on a concrete slab. Overhead door has been replaced by plywood.

125.

401 Lakeside Street

Itta Bena Consolidated School

A. (C) High School Building

1930 Architect: Frank R. McGeoy

One-story scored-brick (5-course common bond) school building, T-plan with hip and cross gabled roof of asphalt shingles and a concrete foundation. Original windows have been replaced, with openings now either boarded or partially filled with smaller metal framed windows. The main entrance on the north façade is framed by pilasters reaching above the roofline and joined by a triangular parapet. The entrance is slightly recessed within a deeply molded segmented arch of cast stone or terra cotta. Interior is mainly intact, featuring wood floors, stucco walls, 2-light hall transoms and 1-light, three-panel wood doors with 1-light transoms. Foyers at each entrance are formed by interior doors and sidelights. The most ornate main entrance consists of double-leaf, 1-light over 3-panel wood doors with 1-light sidelights and tri-part, 20-light transom.

B. (C) Secondary School Building

1940 Robert James Moor

One-story brick 5-course common bond T shaped school building topped by a cross-gabled roof and resting on a concrete foundation. The main side gable is terminated by two parapeted gables with concrete caps. The main entrance is on the north elevation, framed by pilasters rising above the roofline and jointed by a plain parapet. The entrance is recessed within a deep segmented arch and consists of double-leaf one-light steel doors, with two-light, one-panel sidelights topped by a segmental tri-part multi-light transom. Windows have concrete sills and have been replaced with smaller metal framed windows.

C. (C) Gymnasium

1940

One-and-a-half story five course common scored brick building with a flat roof behind a concrete capped parapet. A soldier course cornice surrounds the building. Windows feature soldier course lintels, and rowlock sills. They have been replaced with smaller metal framed. Main entrances are on the north and west elevations and are framed by partial height pilasters and topped by blind transoms executed in a basket weave pattern. Doors are double leaf replacement.

D. (NC) Gymnasium

ca. 1980

Two-story brick veneered gymnasium has a flat roof and rests on a concrete foundation. A one-story addition projects wraps the building to the east, west and south elevations.

E. (NC) Bus Garage

ca. 2004

Utilitarian one-story metal frame and clad bus garage on concrete foundation.

United States Department of the Interior
National Park Service

NATIONAL REGISTER OF HISTORIC PLACES
CONTINUATION SHEET

Section: 7

Page: 37

Itta Bena Historic District
Itta Bena, Leflore County Mississippi

F. (NC) *Bus Garage*

c. 2004

Utilitarian one-story metal frame and clad bus garage on concrete foundation.

G. (NC) *Bus Garage*

c. 2004

Utilitarian one-story metal frame and clad bus garage on concrete foundation.

H. (NC) *Maintenance/Utility Building*

c. 1970

One-story, metal frame, standing seam metal clad low-pitched metal gable roof building on a concrete slab.

I. (NC) *Field House/Bleachers*

c. 1970

Two-story wood framed announcer's booth and wood and metal frame bleachers at football field.

126. (C) **304 Lamar Street
House**

c.1930

One-story asphalt-shingle side-gable frame dwelling has drop-siding with corner boards on a brick foundation. Eaves are wide and boxed and top a wide, plain frieze. A small projecting front gable shelters the entrance, supported on triple, arched, chamfered columns and featuring returns and an ogee pediment adorns the gable front. To the left of the front gable, the slope is broken and projects to an overhang. Windows are 6/6 wood-frame, double-hung and have applied shutters. Asymmetrical façade has 3 bays; ww-d-w.

127. (C) **305 Lamar Street
House**

c.1915

Queen Ann

One-and-a-half story asphalt-shingle, hip-roof with front and side projecting gables, frame dwelling has drop siding and a brick foundation covered with metal sheeting. A cut-a-way bay window is sheltered by a front-facing gable with returns and a wide frieze band. The center facet bay window has been covered by siding, all other windows are 1/1 wood-frame, double-hung with plain wood surrounds and a metal security grate on bottom pane. A hip roof shelters the porch, which wraps to the left, supported by square wooden columns. Wooden door has a segmented fan-light over raised vertical panels. Asymmetrical five bay façade has w-w-d-w-w.

**United States Department of the Interior
National Park Service**

**NATIONAL REGISTER OF HISTORIC PLACES
CONTINUATION SHEET**

Section: 7 Page: 38 Itta Bena Historic District
Itta Bena, Leflore County Mississippi

- | | | | | |
|---|------|-----------------------------------|----------------|----------------------------|
| 128. | (C) | 307 Lamar Street
House | c.1950 | Minimal Traditional |
| <p>One-story asphalt-shingle side-gable frame dwelling has offset large projecting front gable on a brick foundation to form roughly a T-shape. Irregular five-bay façade has w-ww-d-ww-w. Windows are 6/1 and 8/1 wood-frame double-hung with applied shutters. The front facing gable has vertical board-and-batten siding in the pediment and flaring vergeboards with double triangular vents in the peak. A small recessed porch is sheltered by the gable to the left. The entry door is obscured by a screen door, but does have a single light transom above. Two windows are to the right of the porch. The recessed façade to the right of the gable contains another small inset porch with entry.</p> | | | | |
| 129. | (C) | 308 Lamar Street
House | c.1920 | Craftsman |
| <p>One-and-a-half story asphalt-shingle side-gable frame dwelling on a brick foundation has clapboard siding and stucco with applied stickwork in gable ends. Wide bracketed eaves expose rafter tails, a central gabled bracketed dormer contains two six-light fixed wood frame windows. The full-width undercut screened porch is supported by double squat square wooden columns on brick piers which flank the entry door and at corners, spanned with decorative brick knee wall. The west elevation has a tapered exterior brick chimney that pierces the south slope near the peak, and also contains a small projecting gable that shelters a secondary entrance.</p> | | | | |
| 130. | (NC) | 404 Lamar Street
House | c.1975 | Ranch |
| <p>One-story asphalt-shingle, hip-roof brick clad dwelling on a concrete slab. Asymmetric façade has four bays; w-d-w-w. The entry door is offset to the left; a four raised panel wood door topped with four small arched lights. Window to the left is set in a slightly projecting panel and contains a 12-light fixed, flanked by 4/4 double-hung with screens over a vinyl or aluminum panel. Other windows are 6/6 metal-frame double-hung with rowlock sills.</p> | | | | |
| 131. | (NC) | 406 Lamar Street
House | c. 1980 | Ranch |
| <p>One-story asphalt-shingle, hip roof dwelling with brick cladding on a brick foundation. Flanking the façade are one-bay hip-roofed projections, each containing a double 6/6 wood-frame double-hung window with rowlock sill. Between the projections, the slope overhangs, supported by four Doric columns resting on the cement deck, to protect the centered front entrance, which is flanked by triple 6/6 wood-frame double-hung windows with rowlock sill. Door is obscured by a screen door, but has 4-light over two-panel sidelights. Symmetrical façade has eleven bays, ww-www-d-www-ww.</p> | | | | |

United States Department of the Interior
National Park Service

**NATIONAL REGISTER OF HISTORIC PLACES
CONTINUATION SHEET**

Section: 7 Page: 39 Itta Bena Historic District
Itta Bena, Leflore County Mississippi

-
132. (C) **407 Lamar Street** **c.1915** **Queen Anne**
House
One-and-a-half story asphalt-shingle hip-roof frame dwelling with clapboard siding with corner boards on a brick foundation has a front facing gable projecting over a cut-away bay window to the right which is sheltered by a pedimented front gable with a centered upper window and decorative bracket in peak. All windows are 1/1 metal-frame, double-hung with plain wood surrounds. A low sloped hip roof shelters the wraparound porch within the ell, supported on decorative metal poles resting on brick piers spanned with a low brick knee wall. Six bay façade is asymmetrical; w-w-d-w-w-w. Door details are obscured by a screen door, but is flanked by 2-light over recessed panel sidelights and a single light transom.
133. (C) **409 Lamar Street** **c.1950**
House
One-story, asphalt-shingle side gable frame dwelling with clapboard siding on a brick foundation has a full-width broken slope covered front porch supported by five Doric columns resting on a concrete deck. Asymmetrical façade has six bays; w-d-w-w-w-w. Windows are 6/6 wood-frame double-hung in plain wood surrounds. Door has six-lights over three horizontal raised wood panels.
134. (NC) **504 Lamar Street** **c.1980**
House
One-and-a-half story side asphalt-shingle, side-gable frame dwelling clad in brick veneer rests on a brick foundation. The full-width undercut front porch is clad in board-and-batten siding and supported by square brick columns spanned by plain wood balustrade on a cement deck. A small flush gablet is centered on porch roof. Windows are 4/1 wood-frame double-hung. Asymmetrical façade has five bays; w-ww-d-w. Broken slope to the rear. This may be an older dwelling that has been completely re-clad and roofed.
135. (C) **505 Lamar Street** **c.1940**
House
One-story frame dwelling with stepped side-gable roof of asphalt-shingles has asbestos-shingle siding on a brick foundation. Center block roof slope extends to cover a porch supported on decorative metal poles which shelters the entrance. Center block is flanked by single bay hyphens. Asymmetrical façade has seven bays; w-w-d-w-w-w-w. Windows are 2/2 metal-frame double-hung with applied shutters.

**United States Department of the Interior
National Park Service**

**NATIONAL REGISTER OF HISTORIC PLACES
CONTINUATION SHEET**

Section: 7 Page: 40 Itta Bena Historic District
Itta Bena, Leflore County Mississippi

136. (C) **506 Lamar Street
House**

c.1910 Queen Anne

One-story asphalt-shingle, cross-gable frame dwelling rests on a brick foundation and is clad in vinyl siding. A projecting cut-a-way bay window with pedimented gable sits to the left of the façade with three 1/1 metal-frame double-hung replacement windows. To the right is a three-quarter width porch with shed roof supported by square wood columns spanned with a flush wood balustrade. Seven bay asymmetrical façade has w-w-w-w-d-w-d. Door details are obscured by screen doors but each has a single light transom.

137. (NC) **100? Main Street
Commercial Building**

c.1990

One-story commercial building, faced with rough scored concrete, flat roof with shed asphalt shingle overhang awning. Fourteen bays are divided into four, 3-bay units w-d-w. End unit has two bays, w-d. All are metal frame fixed single pane modern glass windows with metal frame glazed or metal doors.

138. (C) **108 Main Street
House**

c.1920 Craftsman

One story irregularly massed frame dwelling has side gable, asphalt-shingle roof on a brick foundation; open eaves display rafter tails and brackets. Windows are 8/8 double-hung wood-frame in plain wood surrounds. A wide front-facing gable contains a central vent and brackets, a lower offset gable is pierced by a painted brick tapered chimney. Seven-bay façade is asymmetrical; ww-d-ww-ww. A shed roof shelters what was a porch to the left, but is now enclosed.

139. (C) **200 Main Street
House**

c.1920 Craftsman

One-story frame dwelling has side-gable, asphalt-shingle roof with wide eaves, exposed rafter tails on façade and closed eaves with brackets on sides. Clad in drop-siding and asbestos shingles, it sits on a brick foundation. A full-width, undercut porch spans the façade, supported on stout square battered columns that rest on a low brick knee wall. Windows are 6/1 wood-frame double-hung in plain wood surrounds. Four-bay façade is asymmetrical; w-w-d-w. Door is raised paneled wood. An exterior brick chimney pierces the north elevation at the roof peak.

United States Department of the Interior
National Park Service

NATIONAL REGISTER OF HISTORIC PLACES
CONTINUATION SHEET

Section: 7 Page: 41 Itta Bena Historic District
Itta Bena, Leflore County Mississippi

-
140. (C) 201 Main Street 1917-18 Romanesque Revival
First Methodist Church
Two-story brick church has complex asphalt-shingle roof and raised cut-stone foundation topped with a continuous water table. A central, three-story octagonal tower rises from the center with tri-part fanlights set in wood panels with arched headers. The north (Cleveland Street) façade contains a central dominant front facing gable with a central rose window with corbelled brick arched header. A stone band divides the façade of the gable. A low shed roof protects the one-story entry which has a double corbelled arch supported on a squat stone column resting on a square stone block. Projecting to the left of the porch is a conical roofed one-story octagonal turret with 1/1 stained glass panes over a stone band. To the right, a projecting rectangular hip-roofed block containing three 1/1 stained glass windows. The west façade (Main Street), has two dominant front facing gables flanking a one-story gable front over the arched entrance. The gable to the left contains a massive stained arched stained glass window with corbelled header, to the right, a series of arched 1/1 stained glass windows on both first and second story. The entry on this elevation is a double leaf single stained glass pane over raised panel wood doors with triple pane arched transom under an arched corbelled header. A modern addition to the south of the main sanctuary serves as the education wing.
141. (C) 202 Main Street c.1920 Craftsman
House
One-story frame dwelling with side-gable roof of asphalt shingle with open bracketed eaves that expose rafter tails set on a brick foundation. A central bracketed front gable dormer is centered and contains one vent. Slightly offset is another bracketed front gable that projects over and shelters the entrance, supported by one plain column and one square wood post on a concrete deck. Asymmetrical façade has w-d-w-d-ww-ww. Windows are 6/1 wood-frame double-hung in plain wood surrounds. Wood doors have six recessed panels. An interior stone chimney pierces ridge.
142. (NC) 203 Main Street c.1965 Ranch
House
One-story brick clad dwelling has double-hip roof of asphalt-shingle and boxed eaves over a single soldier course. Façade is symmetrical with w-d-w. Windows are a pair of 2/2 metal-frame, double-hung with applied shutters to the right and 4 fixed horizontal lights flanked by 2/2 metal-frame, double-hung with applied shutters to the left. Door details obscured by screen door.
143. (NC) 204 Main Street c.1960 Ranch
House
One-story frame dwelling with pyramidal-hip roof of asphalt-shingles on a brick foundation, with boxed eaves and wide plain cornice. The right half of the façade is recessed, supported on decorative metal stanchions on a cement deck, clad in board-and-batten siding and contains the central doorway and a

**United States Department of the Interior
National Park Service**

**NATIONAL REGISTER OF HISTORIC PLACES
CONTINUATION SHEET**

Section: 7 Page: 42 Itta Bena Historic District
Itta Bena, Leflore County Mississippi

ribbon of four 2/2 horizontal-light windows in metal frames. The left half of the front façade is clad in brick veneer and contains a double 6/6 wood-frame, double-hung window.

144.(C) **206 Main Street** **c.1930** **Craftsman**
House

One-and-a-half story side gable frame dwelling on a brick foundation has wood lap-siding and asphalt-shingle roof. Symmetrical façade, ww-d-ww is dominated by a central bracketed front gable dormer with four Craftsman 4/4 wood frame windows flanked by square vents. Twin square painted brick chimneys pierce the peak and flank the gable. A wide hip roof radiates from the dormer and shelters the full-width porch with a centered smaller bracketed gable. Paired square wood posts on tall brick piers support the porch roof. Windows are 4-vertical lights over 1, wood-frame double-hung with wide plain wood surrounds. Centered wood Craftsman style door has 15-lights, is flanked by 20-light sidelights and topped with a 24-light transom. Projecting from the left of the main block is a narrow stepped gable.

145. **301 Main Street** **c.1914** **Neo-Classical**
First Baptist Church **Architect: (attributed) James E. Greene**

A. (C) Three-story brick hip-and-gable asphalt-shingled roof is topped with a central octagonal dome. A raised brick pilaster at corners and raised brick water table delineates façade from elevated basement. Windows at basement level are 1/1 stained glass with wood surrounds and cast stone sill. Second story windows are 1/1 stained glass with an arched top light, segmented arched stained glass transom, and 1/1 narrow stained glass sidelights and cast stone sills. Third floor windows are paired one-light stained glass topped with single metal decorative screened panel. Asymmetrical west elevation contains a slightly projecting pedimented front gable off-set to the right, supported by four full height fluted Corinthian columns, the frieze is adorned with a string of swags. Recessed under the gable are three narrow two-story arched-top stained glass panels with triple soldier course arched headers. The porch is flanked by rows of two windows to the left and one to the right.

B. (C) Education Annex Building **1957 Architect: C. H. Dean Jr.**

Two-story brick gable roof education building fronts Thurman Street. Gable end has applied stucco underscored with a string course. A central projecting full height entryway is clad in large faux stone block with a doorway crowned with a broken pediment, supported by flat pilasters. Double leaf raised 6-panel wood doors have an 8-light transom. Stone corner pieces read "C.H. Dean Jr. Architect, Walter Johnson, Builder" and "First Baptist Church Education Building 1957."

C. (NC) Community Building **c 1980**

Two-story brick gable roof community building is attached by a one story hallway to the 1957 education building. A centrally located entry door on the north elevation is flanked by two 6/6 vinyl clad double hung windows on the first story. The second story contains a ribbon of four 2/2 fixed windows asymmetrically placed to the right, followed by another set of three.

**United States Department of the Interior
National Park Service**

**NATIONAL REGISTER OF HISTORIC PLACES
CONTINUATION SHEET**

Section: 7 Page: 43 Itta Bena Historic District
Itta Bena, Leflore County Mississippi

146. (C) **304 Main Street** **c.1930**
House
One-story asphalt-shingled, side-gabled roof frame dwelling has drop-siding and a brick foundation. The central doorway is six-panel modern flanked by 20-light wood-frame windows with applied shutters. These are sheltered by a projecting flat roof supported by plain metal poles. To the right of the porch is a flat roofed projecting bay window with three 6/6 wood-frame, double-hung windows. To the left of the porch is a single 20-light window. A single story side gable garage is attached to the right and rear of the main block.
147. (C) **400 Main Street** **c.1910**
House
One-and-a-half story asphalt-shingle, gable front and wing frame dwelling on a brick foundation clad in drop-siding. Broken slope from front facing gable and shed roof cover a porch that fills the ell, supported on square wood columns with plain caps set on the wood deck. Windows are 2/2 wood-frame, double-hung with wood surrounds. Entry sheltered in porch is 9-light panel wood door with 3-light sidelights and transom. Façade is six bays; w-ww-d-ww. An addition to the left of the front gable contains a side gable garage.
148. (C) **401 Main Street** **c.1950** **Minimal Traditional**
House
One-story asphalt-shingle, stepped front-gable frame dwelling with side gable projecting to the left, clad in drop-siding on a brick foundation. Projecting front gable has vertical wood panels in pediment, flared vergeboard and vent at peak and shelters a half-width inset porch supported on a round metal pole which contains the entry door; a 6-light over raised-panel, single-leaf with 6-light over panel sidelights. Windows are 6/6 wood-frame double-hung in plain wood surrounds with applied shutters. A side gable projects from behind the front gable and contains a set of matching windows.
149. (C) **403? Main Street** **c.1959** **Craftsman**
House
One-story, asphalt-shingle, side-gable roof frame dwelling with brick cladding on brick foundation has open eaves with exposed rafter tails. Façade is dominated by slightly off-set to the right low-pitch front facing bracketed gable with wood panels and applied timbering in pediment. At the ridge, another front facing gable with brackets and a vent projects to the rear in a cross gable extension. Windows are 4/1 wood-frame double-hung Craftsmen style with vertical top lights set in plain wood surround. Entrance is recessed under front gable, supported with square brick columns with wood caps, flanked by four windows to the left and a garage to the right. An exterior tapered brick chimney pierces the roof on the north elevation.

United States Department of the Interior
National Park ServiceNATIONAL REGISTER OF HISTORIC PLACES
CONTINUATION SHEETSection: 7 Page: 44 Itta Bena Historic District
Itta Bena, Leflore County Mississippi

-
150. (NC) 404 Main Street c.1990
House
One-story pyramidal-hip roof brick-clad frame dwelling rests on a concrete slab. Boxed eaves have soldier course underneath a moderate cornice. Windows are 12 and 16-light fixed with rowlock sills and applied shutters. Door is 2-light with four recessed panel in wood surround. Façade is asymmetrical; w-w-d.
151. (C) 405 Main Street c.1940
House
One-story, asphalt-shingle, side-gabled roof asbestos-shingle sided frame dwelling on brick foundation. Windows are 6/6 wood-frame double-hung with wood surrounds. A small addition is attached to the right, delineated by a change in siding and metal frame sliding window. Front entrance is sheltered by a small front facing gable supported on decorative metal stanchions resting on the concrete deck. Façade is five bay; w-w-d-w-w.
152. (C) 406 Main Street c.1910 Free Classical
House
One-and-a-half story asphalt-shingle, gable-on-hip roof frame dwelling on brick foundation has drop-siding cladding. Prominent front facing gable has cornice returns and diamond shaped detail in pediment. Low hipped roof covers porch that wraps to the left, supported by fluted Corinthian columns which rest on the wooden deck. Façade is symmetrical; w-d-w. Wood door is flush with large oval pane, vertical oval sidelights and single-light transom. Windows have diamond shaped leaded lights over large single-pane in wood-frames with plain wood surrounds. Side elevations each contain a flush gable with end returns.
153. (NC) 500 Main Street c. 1980
House
One-and-a-half story side-gable, asphalt-shingle roof frame dwelling clad in brick veneer. Main block has three symmetrically placed gable roof dormers, each with a 6/6 vinyl double-hung window. Broken-slope extends over porch supported on six square wood columns. Central entry is flanked with two paired 6/6 vinyl double-hung windows. The step-side gable addition to the right has no fenestration. To the left is an enclosed garage with overhead door.
154. (C) 501 Main Street c.1950
House
One-story side-gable frame dwelling on a traditional foundation is sided with masonite and has 8/8 wood frame double-hung windows with applied shutters. Symmetrical façade is w-d-w. A small front facing flush gable is to the right and a shed roof porch projects, supported on decorative metal stanchions.

United States Department of the Interior
National Park Service

NATIONAL REGISTER OF HISTORIC PLACES
CONTINUATION SHEET

Section: 7 Page: 45 Itta Bena Historic District
Itta Bena, Leflore County Mississippi

155. (C) **503? Main Street** c. 1940
House
One-story frame dwelling with asphalt-shingle, side-gable roof on a brick foundation, clad in drop-siding. Asymmetrical façade is w-w-d-w. Windows are 2/2 wood-frame double-hung with plain wood surrounds. Door is obscured behind a screen door. A small addition to the rear of the north elevation has open eaves with exposed rafter tails.
156. **505? Main Street** c.1940
House
A. (C) One-story frame dwelling on brick foundation with side-gable, asphalt-shingled roof. Wide plain fascia on front façade, and open eaves with exposed rafter tails on recessed addition to the left. Symmetrical façade is ww-d-ww. Windows are 9/1 wood-frame double-hung with wide, plain surrounds. A small gablet projects to shelter the centered entry, supported on plain wood posts.
- Garage** c. 1970
B. (NC) One-story, pyramidal roofed frame single-car garage with wood clapboard siding rests on a concrete slab. Overhead door is gone opening boarded with plywood.
157. (C) **100 Martin Luther King** c.1940 **Colonial Revival**
House
One-story frame asphalt-shingle, side-gable dwelling with drop siding and brick foundation with small hip-roofed addition set back to the right. Main block façade is 7 bays; w-w-w-w-d-w-w. Windows to the far left are 4/4 double-hung wood-frame, next a double 4/1, the pedimented door with pilasters on brick pilaster piers, then double 4/4 wood-frame double-hung. The addition contains a double 2/2 horizontal pane double-hung wood frame. All windows have applied shutters.
158. (NC) **101 Martin Luther King** c.1980
House
One-story asphalt-shingle side-gable frame structure with projecting front gable offset to the left. The roof extends over entry to the right of the gable, forming a small porch. Cladding is asbestos-shingle over a brick foundation with vents. Windows are 6/6 metal-frame double-hung with applied shutters. Five bay façade is w-w-w-w-w, with the door placed on the side of the front gable. A small stepped gable addition to the right.

**United States Department of the Interior
National Park Service**

**NATIONAL REGISTER OF HISTORIC PLACES
CONTINUATION SHEET**

Section: 7 Page: 46 Itta Bena Historic District
Itta Bena, Leflore County Mississippi

**159. (NC) 200 Martin Luther King
House**

c.1970

One-story brick-clad frame dwelling with side-gable asphalt-shingle roof on a brick foundation. A small gablet that pierces the roof at the peak contains a triangular vent. An inset porch to the right is supported by decorative metal stanchions, has a concrete deck on brick foundation. The entry door is to the side of porch; a modern raised panel metal door. Six bays are ww-ww-ww. Windows are 1/1 wood-frame double-hung in plain wood surrounds with applied shutters.

**160. (NC) 201 Martin Luther King
House**

c.1970

One-and-a-half story frame dwelling clad in asbestos-shingles with stepped, side-gable asphalt shingle roof on a brick foundation. Six bay façade, w-w-d-w-w-w includes addition to the right. Windows are 6/6 wood-frame double-hung with applied shutters. Six panel wood door is slightly off centered and sheltered under a shed roofed porch with arched square white columns for support. To the right of the addition is a one story frame with brick veneer, side-gable roof addition with six full length fixed panes and two spaced 6/6 wood-frame double-hung windows on a concrete slab.

**161. (NC) 300? Martin Luther King
House**

c.1975

Ranch

Sprawling one-story frame dwelling on brick foundation has vertical wood board-and-batten siding, and flanking projecting front facing gables with a broad overhang between which shelters the entrances. Five-bay façade has d-w-w-d-w, windows are 1/1 wood frame double hung and doors cannot be determined.

**162. (C) 303? Martin Luther King
House**

c.1930

Irregular, multi-hip and gable asphalt-shingle roof frame dwelling has drop-siding cladding with corner boards over a brick foundation. Projecting front hip-roof leads to low hip-roof sheltering porch which wraps to both sides, supported on square wooden poles with caps, resting on wood deck. Centered door is flanked by 1/1 wood frame double hung windows in wide plain wood surrounds. An open carport extends to the left, supported on metal poles.

**163. (NC) 101 Schley Street
Commercial Building**

c.1980

Modern commercial building with brick veneer, expansive low slope gable roof, and recessed storefront with fixed pane metal-frame display windows sheltered under a wide overhang supported by square brick veneered posts. On the general site of the old Itta Bena C & G Railroad passenger and freight depot.

United States Department of the Interior
National Park Service

**NATIONAL REGISTER OF HISTORIC PLACES
CONTINUATION SHEET**

Section: 7

Page: 47

Itta Bena Historic District
Itta Bena, Leflore County Mississippi

164. (C) **103? Schley Street** **c.1920**
Commercial Building
One-story brick commercial building with stepped parapet with concrete cap. Twin panels in brick work have stone cap corners with rowlock edges. Soldier course row along top of boarded transom punctuated by cast concrete insets. The offset entry is metal frame glazed door with single sidelights and transom. To the right of the door are three display panes in wood frames over low brick wall. To the left, one large pane is flanked by smaller panes in vinyl frame. A flat metal awning is supported by decorative metal poles.
165. (NC) **104 Schley Street** **c.1980**
Commercial Building
One-story painted brick veneer with sloping flat roof behind aluminum sided flat parapet protruding above short, sloped shingled pent roof over wide enclosed overhang. Street façade contains a centered modern wood door in wood frame. North and south elevations each contain two symmetrically placed vinyl fixed 1/1 panes with rowlock sills. Low matching brick planters flank the front entry.
166. (NC) **105? Schley Street** **c.1920**
Service Station
Brick-clad one-story service station with canted entrance facing the corner of Schley and Fitzhugh. Main block is stuccoed, with two fixed panes set in wood frame to the left and a wooden one light entry door to the right. A long sloping wood shingle overhang shelters the façade. Attached to the west is a brick service building with flat roof, concrete cap on flat parapet and three 12-light overhead doors. Deterioration has caused the roof to collapse into the building, rendering it non-contributing.
167. (C) **106 Schley Street** **c.1940**
Commercial Building
One-story common English-course brick structure with front facing gable roof of asphalt shingles with no eaves on a brick foundation with soldier-course water table and vents. Single windows on each side elevation have been in-filled with brick. Entrance is centrally located on gable end; a flush metal door in metal surround accessed by three concrete steps to a concrete stoop.
168. (C) **107? Schley Street** **c.1940**
Barracks
One-and-a-half story front gable asbestos-shingle clad structure on brick foundation is deteriorated. Windows are 6/6 wood-frame double-hung. Façade has a central entryway sheltered by a small gable-roof open foyer with a window in each wall and arched cornice. Door is off-set to the left, and covered with a screen door. To the left of the entrance is a row of five windows, to the right a row of three. Two windows are centered over the entrance, although one window is missing and open. The gable peak contains a single, centered, square vent.

**United States Department of the Interior
National Park Service**

**NATIONAL REGISTER OF HISTORIC PLACES
CONTINUATION SHEET**

Section: 7 Page: 48 Itta Bena Historic District
Itta Bena, Leflore County Mississippi

169. (NC) 108? Schley Street c.1990
House
One-story side-gable brick clad dwelling with a projecting bay to the left. Two 6/6 vinyl-clad windows flank a blank brick panel in the bay. To the right is a hip roof slightly projecting porch supported by square wooden columns. The porch shelters the central entrance, a modern 6-light over four raised panel door. Triple 6/6 windows to the right of the entrance.
170. (NC) 109? Schley Street c. 1990
Fuel Station
Unattended fueling station consisting of a flat sheltering canopy, supported by two metal poles over a fuel pump on concrete lot.
171. (NC) 110? Schley Street c.1990
House
One-story asphalt-shingle, side-gable brick-clad dwelling on concrete slab. Façade is w-w-d-w-w, with multiple window configurations, all with rowlock sills and applied shutters. The recessed entrance contains a flush wood door. A projecting bay window to the far right has an arched rowlock sill.
172. (C) 111? Schley Street 1946 Architect: Thomas Henry
Presbyterian Church PCA Johnston, Jr.
One-story T-shaped brick-clad church with prominent front facing asphalt-shingle gable and smaller side gables to the rear. Stretcher course side elevations are punctuated by symmetrically placed Flemish course pilasters. Two vertical 5-light blue glass windows are placed between each pilaster. The main entrance is sheltered under a smaller gable, supported on brick clad walls and accessed by four cement steps leading to cement stoop. Double-leaf single-pane wood doors are flanked by 12-light sidelights. Extending from the rear side gable to the right is a shed roof porte cochere with vinyl or aluminum soffit, supported with full brick piers, accessed by an arched concrete driveway from MLK. The secondary entry has a fully glazed, 2-light and metal frame door flanked by 8-light metal frame casement windows. The side gable to the left contains a fixed 12-light metal frame window and a six-light casement on the front elevation and a third access door (flush metal) in the gable end. A metal spire with a cross tops a brick pier where the front and side gables meet on the south slope.
173. (C) 200? Schley Street c.1930 Craftsman
House
One-story hip-roof frame dwelling with clapboard siding over low brick knee wall foundation with wide eaves and exposed rafter tails. Front facing gable has closed eaves and brackets, over an open half-width porch supported by triple plain square wood columns at the corners, resting on the concrete deck. Asymmetrical façade; w-w-d-w. Windows are 6/1 double-hung, wood-frame in plain wood surrounds. Door is four-light over horizontal raised panel wood.

United States Department of the Interior
National Park Service

NATIONAL REGISTER OF HISTORIC PLACES
CONTINUATION SHEET

Section: 7 Page: 49 Itta Bena Historic District
Itta Bena, Leflore County Mississippi

-
174. (C) 300 Schley Street c.1930 Craftsman
House
One-story asphalt-shingle, hip-roof dwelling with clapboard cladding and wide eaves with exposed rafter tails on a brick foundation. Bracketed front facing gable projects over porch, supported on square posts that rest on the concrete deck. Asymmetrical four-bay façade; w-w-d-w. Windows are 6/6 wood-frame double-hung in plain wood surrounds. Door details are obscured by screen door, but in matching surround. Porch accessed by wooden handicap ramp with simple wood balustrade.
175. (C) 302 Schley Street c.1920 Craftsman
House
One-story side-gable dwelling with dominant central projecting front clipped gable that contains an enclosed porch and front entry. Eaves are wide and open and contain brackets. The entrance to the enclosed porch is sheltered by a bracketed gablet with arched verge board. Door details are obscured by a screen door, but has a plain wood surround and is topped with a hooded four-pane fanlight. The five porch windows are 1/1 wood-frame double-hung in plain wood surrounds and topped with two-light transoms. Five concrete steps lead to the door, flanked by low brick knee walls capped with concrete. A nine-light window is located in the peak of the front facing gable. Recessed and to the left of the projecting enclosed porch are three 9/1 wood-frame double-hung windows. Vegetation obscures details of façade to the right of the projecting gable.
176. (NC) 303 Schley Street c.1980
House
One-story brick-clad dwelling with complex multi-hip asphalt-shingle roof with wide fascia. Vegetation obscures foundation. Asymmetrical façade is w-w-d. Windows are composed of large central fixed pane flanked by 1/1 double-hung with rowlock sills, soldier course headers and applied shutters. The door is sheltered by a front facing clipped-gable with prominent returns. Door details are obscured with a screen door and security grate, but is topped with a soldier course header. The area within the gable is stuccoed with an arch composed of another single soldier course. To the far right is an open carport supported with square brick columns. An interior brick chimney pierces the roof near the peak.
177. (C) 306 Schley Street c.1920
House
One-story side-gable asphalt-shingle roof frame dwelling with clapboard siding on concrete foundation. Symmetrical five bay façade; w-w-d-w-w. Windows are 12/12 wood-frame double-hung in plain wood surrounds, door is modern 15-light in wood surround and flanked by fluted pilasters. Broken slope roof shelters full-width porch, supported by turned posts that rest on concrete deck. The south elevation contains an exterior aluminum clad chimney and to the rear, a small gable roof addition that contains a secondary entrance.

**United States Department of the Interior
National Park Service**

**NATIONAL REGISTER OF HISTORIC PLACES
CONTINUATION SHEET**

Section: 7 Page: 50 Itta Bena Historic District
Itta Bena, Leflore County Mississippi

178. (C) **307 Schley Street** c.1915 **Neo-Classical**
House
One-and-a-half story complex gable-on-hip asphalt-shingled roof frame dwelling with clapboard cladding on a brick foundation. Side gable block in rear is fronted with a central hip roof block dominated by a central large gable-roof dormer. Dormer has flared verge board, alternating saw tooth and fish scale wood shingles in gable and four Craftsman style 4/1 wood-frame double-hung windows in plain wood surrounds. A low hip roof shelters the full-width porch that wraps to both sides and is supported by plain Doric columns that rest on the wooden deck. Façade is three bay; w-d-w, symmetrically placed. Windows are Craftsman style 1/1, the top light is smaller pane decorative leaded, set in wood frames with plain wood surrounds.
179. (C) **308 Schley Street** c.1940 **Craftsman**
House
One-story side clipped-gable dwelling with clapboard siding over brick foundation. Wide eaves show exposed rafter tails on front elevation and brackets at sides. Windows are 4/4 wood-frame double-hung with plain wood surrounds. Full-length undercut front porch is supported by triple square columns at corners and single columns at centered entrance, resting on wood clad knee wall. A step gable to the right shelters open carport, displays rafter tails and is supported by plain round metal poles. Fenestration is obscured by screened porch.
180. **310 Schley Street** c.1940 **Craftsman**
House
A. (C) One-story, asphalt-shingle, hip-roof dwelling on brick foundation has front facing clipped-gable projecting over half-width porch, supported with three Doric columns resting on brick deck. Eaves on side elevations are open with exposed rafter tails and the boxed front gable eave is bracketed. Façade is asymmetrical, w-d-ww. Windows are Craftsman style 6/1, with the six upper panes consisting of small square panes over long verticals, with wood-frame, double-hung in plain wood surrounds, hinged screens and applied shutters. Flush wood door behind screen door.
Detached carport c. 1980
B. (NC) One story frame carport with large storage shed is clad in vertical wooden panels. A modern six-panel entrance door is sheltered by the carport, which is supported on metal poles.

**United States Department of the Interior
National Park Service**

**NATIONAL REGISTER OF HISTORIC PLACES
CONTINUATION SHEET**

Section: 7 Page: 51 Itta Bena Historic District
Itta Bena, Leflore County Mississippi

-
181. (C) **400 Schley Street** c.1940 **Tudor Revival**
House
One-and-a-half story brick clad dwelling with cross gable asphalt-shingle roof with wide, plain fascia, set on a brick foundation topped with a rowlock course. The façade is dominated by a front facing gable that flares down and over a one story projection to the right. Within the front gable is an asymmetrical sub-gable that shelters the arched entry door which is framed with a soldier course and flanked by small decorative flares with concrete caps near grade. Façade is asymmetrical; w-w-d-w-w-w. Windows are 6/1 wood-frame in wood surrounds with cast concrete sills. A brick chimney with corbelled ridge and metal cap pierces the front facing gable at the rear at the ridgeline.
182. (C) **404 Schley Street** c.1945
House
One-story side-gable, brick-clad dwelling rests on a concrete foundation. Façade is ww-d-ww, with entrance slightly off-center. Windows are 9/1 wood-frame double-hung with plain wood surrounds. The door is sheltered under a front facing gable with arched verge board and beaded board ceiling, supported by decorative metal posts on a concrete deck. Craftsman style door and sidelights with vertical pane atop square panes then capped with square panes. A lower side gable extension projects to the right.
183. (C) **405 Schley Street** c.1935 **Craftsman**
House
One-story pyramidal hip roof with asphalt-shingles and open eaves on brick foundation. Undetermined cladding, façade is four bay; w-w-w-d. Windows are Craftsmen-style 4-vertical-lights-over-one, in wood frames and surrounds. Door is Craftsman, with 4-vertical-lights-over-3 horizontal raised wood panels, with matching sidelights and transom. Roof flares out to cover a full width front porch with exposed rafter tails, and open carport to the left, supported on decorative metal stanchions that rest on a concrete deck, and at carport on brick piers.
184. (C) **408 Schley Street** c.1930
House
One-story hip roof dwelling with drop-siding rests on a brick foundation. A full-length front porch with brick deck and steps is supported by replacement fluted columns with a flat roof under a small pent gablet with decorative verge board. Façade is three-bay, symmetrical; w-d-w. Windows are 1/1, in wood frames and surrounds with the smaller top pane of decorative leaded glass.

**United States Department of the Interior
National Park Service**

**NATIONAL REGISTER OF HISTORIC PLACES
CONTINUATION SHEET**

Section: 7 Page: 52 Itta Bena Historic District
Itta Bena, Leflore County Mississippi

185. (NC) 409 Schley Street c.1975 Ranch
House

One-story cross gable brick clad dwelling on concrete slab. Front facing gable contains vinyl siding in peak, vent and flaring verge boards. Two symmetrically placed windows in front facing gable have rowlock sills and soldier course headers, along with shutters and security grates. Broad, enclosed eaves supported with decorative metal stanchions shelter a front walkway that leads to the entrance at the juncture of the side and front facing blocks. To the left of the door is a large fixed picture window with applied shutters, then to the far left of the façade is an inset carport with cupola at roof peak.

186. (C) 411 Schley Street c.1930 Craftsman
House

One-and-a-half story multi-hip asphalt-shingle roof, brick-clad dwelling with wide, open eaves and exposed rafter tails, a prominent hip-roof dormer that contains five, triple vertical-light wood-frame windows, and full-length undercut porch. Symmetrical façade is seven bays; w-w-w-d-w-w-w, and has a cast concrete band that runs under window sills. Windows are 4/1, wood-frame double-hung with wood surrounds and Craftsman style vertical top lights. Porch has cement deck and decorative metal stanchions and rail. Craftsman style door surround contains sidelights with double long vertical panes between double small square panes. Door details obscured by screen door.

187. (C) 413 Schley Street c.1915 Queen Ann
House

One-story side-gable frame dwelling with clapboard siding over brick foundation. A pent front facing gable tops a cut-away-bay window to the right which has been altered and only retains the center window; a 1/1 with screens that obscure the material, and applied shutters. To the left of the bay is the main entry, which is sheltered by another front facing gable which projects out and is supported by decorative metal stanchions. Door is obscured by a screen/grated door, but the surround contains two-pane side-lights over raised wood panels and a triple pane transom. Two 1/1 double-hung windows with applied shutters, screens and wood sills and headers are to the left of the doorway.

**United States Department of the Interior
National Park Service**

**NATIONAL REGISTER OF HISTORIC PLACES
CONTINUATION SHEET**

Section: 7 Page: 53 Itta Bena Historic District
Itta Bena, Leflore County Mississippi

188. (NC) 414 Schley Street
House

c.1915

Heavily altered two-story frame, gable and hip, asphalt-shingle roof dwelling rests on brick foundation. Central hip roof leads to gable ends on each side; a pent gable over cut-away-bay window to the left front façade and secondary gable that shelters later second story porch/entrance on second story, supported on turned wood posts. Second story porch also has one modern 9-light over raised panel door, and vinyl 1/1 window. Aluminum or vinyl siding has been applied, windows are 1/1 with metal screens, replacement surrounds and applied shutters. A one-story porch extends from the bay window across the façade, supported by square brick piers with screening in metal frames between and a vinyl or aluminum cornice. The front entry door matches the upstairs porch door with a surround that retains single-light sidelights over raised panels and boarded transom.

189. (C) 423 Schley Street
House

c.1910

Queen Anne

One-story dwelling with asphalt-shingle cross-gable roof, clapboard siding on a brick foundation. Front-gable section projects from side gable block to the rear. Front section has pedimented gable end with decorative verge board and alternately chiseled, fish scale and coursed wood shingles in gable, and a circular vent. The main door is under the gable; a single light over three recessed horizontal wood panels, topped with another horizontal recessed panel, then a single-light transom. A shallow shed-roof shelters the wood-deck porch that wraps to the left, supported on turned posts with decorative brackets. All visible windows are 2/2 wood-frame double-hung in plain wood surrounds. Two additional doors are at the rear of the porch. The side gable block has brick cladding on the sides, including the shed roof addition to the rear. A brick chimney pierces the front facing gable at peak.

190. (C) 425 Schley Street
House

c.1930

Craftsman

One-story front gable dwelling on brick foundation. Wide overhang has knee braces on front façade and exposed rafters on sides. Clad in wood drop siding, windows are 1/1 wood-frame double-hung with plain wood surrounds. The front porch is undercut and supported with square battered full length columns which rest on a wood deck and are topped with simple square caps. A plain square rail balustrade spans the porch and the gable front contains a central double vent.

**United States Department of the Interior
National Park Service**

**NATIONAL REGISTER OF HISTORIC PLACES
CONTINUATION SHEET**

Section: 7

Page: 54

Itta Bena Historic District
Itta Bena, Leflore County Mississippi

191. (C) **427? Schley Street
House**

c.1915

Queen Ann

One-story cross gable, asphalt-shingle roof frame dwelling with projecting front gable rests on a brick foundation. A three-quarter width porch is sheltered under a low hip roof supported by slender battered square columns with simple square caps. Façade contains a double 1/1 wood-frame double-hung window with plain wood surrounds to the right of the entry door; a single glazed light over raised wood panel with one-light transom. Window to the left of porch is 3/2 horizontal metal-frame double-hung. Front facing gable has decorative verge board and circular folk design cutwork panel in peak. An interior brick chimney pierces the peak behind the front facing gable.

192. (C) **500 Schley Street
House**

c.1930

Craftsman

One-and-a-half story brick dwelling with complex hip roof with wide, open eaves with exposed rafter tails, over brick foundation with soldier course water table. Front façade dominated by hip roof dormer with four 6/6 wood-frame double-hung windows. Under dormer, two full length brick pillars lead to an open, undercut porch with matching brick columns at the corners. The north elevation contains an exterior stuccoed chimney. Other windows are 9/1 wood-frame double-hung with plain surround and cast concrete sills. Replacement door is raised, six-panel wood with single-light transom.

193. (NC) **501 Schley Street
House**

c.1940

One-story cross-gable dwelling on brick foundation has been substantially altered. Dominating bracketed front facing gable has brick veneer with vertical siding in peak and along cornice, side gable stretches over open carport to the right, supported on fluted composite columns. North elevation clad in aluminum siding. Windows are 6/6 wood-frame double-hung with applied shutters.

194. (NC) **506 Schley Street
House**

c.1980

Ranch

One-story brick clad ranch on brick foundation with undercut open carport and entryway. All windows are 2/2 horizontal metal-frame double-hung with rowlock sills and applied shutters. Brick planter spans the front façade.

195. (NC) **507 Schley Street
House**

c.1970

Ranch

One-story dwelling with side-gable asphalt-shingle roof and flanking flush front gables on a brick foundation. Board-and-batten siding, brick foundation and 1/1 metal-frame double-hung windows. Façade is seven bays: w-w-d-w-w-w-w. Between gables, the slope breaks to shed roof over recessed entry with flush wooden door and metal screen door.

United States Department of the Interior
National Park Service

**NATIONAL REGISTER OF HISTORIC PLACES
CONTINUATION SHEET**

Section: 7

Page: 55

Itta Bena Historic District
Itta Bena, Leflore County Mississippi

196. (C) **508 Schley Street**
House

c.1930

Craftsman

One-story side-clipped-gable dwelling with eyebrow stoop supported with brackets over slightly off-center entrance rests on a brick foundation. Cladding over door is vertical board-and-batten, and clapboard on façade. A brick chimney with stucco panels at the base and on the shaft pierces the front slope to the left of the stoop, then two, 4/1 Craftsman style windows. The porch to the right of the entry has been enclosed with louvered windows.

197. (NC) **513 Schley Street**
House

c.1980

One-story brick clad dwelling with side-gable, asphalt-shingle roof with prominent front facing gable at center of façade with vent at peak with rowlock sill and an inset smaller gablet which shelters front entrance, supported on decorative metal stanchions. A third front-gable is at far left, attached to the main block with a small hyphen that contains a 9-light octagonal window with rowlock surround. All other windows are simulated 6/6 with rowlock sills and soldier course headers and applied shutters.

198. (NC) **516 Schley Street**
House

c.1960

One-story brick clad dwelling with side gable asphalt-shingle roof and slightly projecting front gable to the right. A large open flat-roof porch with open eaves spans 3/4 of the street façade, supported on square wooden framework. Visible windows are a set of triple 1/1 vinyl-clad double-hung with rowlock sill and applied shutters and attached wooden planter underneath. Entrance is to the far left of front façade behind a square wooden balustrade. A wooden privacy fence obscures remainder of façade.

199. (NC) **517 Schley Street**
House

c.1980

Ranch

One-story brick dwelling with side gable asphalt shingle roof with front facing projecting gable to the left on concrete slab. Windows are 1/1 metal-frame double-hung with applied shutters and rowlock sills. Prominent verge board in front facing gable flares at termination. Entry door is in corner of ell; a modern raised panel wood door and an open carport at the far right.

200. (NC) **519 Schley Street**
House

c.1990

Ranch

One-story hip-roof brick clad dwelling on concrete slab foundation has wide boxed overhang, to the left an undercut porch and carport with square wood posts. Windows are vinyl 1/1 with applied shutters and decorative safety grates.

**United States Department of the Interior
National Park Service**

**NATIONAL REGISTER OF HISTORIC PLACES
CONTINUATION SHEET**

Section: 7

Page: 56

Itta Bena Historic District
Itta Bena, Leflore County Mississippi

201. (NC) **521 Schley Street**
House

c.1970

Ranch

One-story brick clad ranch with hip roof of asphalt-shingles and front facing end gable. Front gable has aluminum siding in peak over a double simulated 6/6 light wood-frame window with applied shutters and rowlock sill. Door is centered in side gable block, flanked by a matching pair of windows to the left and simulated 16-light picture window with flanking 4/4 double-hung wooden windows to the right.

202. (C) **601 Schley Street**
House

c.1910

One-story frame dwelling has hip-roof with cross and front facing gables of asphalt-shingles and asbestos-siding on a brick foundation. The front gable has a vent in the peak and shelters a cutaway bay window. All windows are 1/1 double-hung wood-frame with plain wood surrounds. A six-light over raised panel wood entry door replaces the front window in the bay and is sheltered with a metal awning. Cement steps and a stoop with white wrought iron railing leads to the door. To the left of the bay are two windows, then a shed roof addition with a set of windows. The south elevation contains a secondary entry door.

203. (NC) **602? Schley Street**
House

c.1980

Ranch

One story brick clad residence has hip, asphalt shingle roof with hip roof extension to the right over a brick foundation. Six bays, w-w-d-w-w-w. Windows are vinyl-clad 9/9 double hung with applied shutters. Door is modern raised panel wood composite. Entry is sheltered in small inset porch.

204. (NC) **604 Schley Street**
House

c.1980

One-story brick stepped side-gable asphalt-shingled dwelling with boxed eaves and plain cornice on a concrete slab. A low-sloping shed roof extends in front to shelter a porch supported with five fluted columns. Six bays are w-w-w-d-w-w. Windows are simulated 6-light vinyl-clad double-hung with applied shutters. Door is modern six-light over raised panel metal door. End gables have returns.

**United States Department of the Interior
National Park Service**

**NATIONAL REGISTER OF HISTORIC PLACES
CONTINUATION SHEET**

Section: 7

Page: 57

Itta Bena Historic District
Itta Bena, Leflore County Mississippi

-
205. (C) **605 Schley Street** **c.1930** **Tudor Revival**
House
One-story frame clapboard dwelling with side-gable asphalt-shingle roof and small stepped gable addition to the north. The front façade is dominated by a steep front gable that reaches down to shelter front entrance, and adjacent massive painted brick stepped chimney. The front entry door is arched with plain wood surrounds and flanked by small rectangular windows with matching surround. A pair of 6/6 wood- framed double-hung windows in plain wood surrounds is to the right of the chimney. The small, step-roofed addition to the north has a single window that matches the others. To the left of the entry is an inset porch screened with rounded corner wood frame. The dwelling is set on a brick foundation with vents.
206. (C) **606 Schley Street** **c. 1930**
Outbuilding
One-story small brick side-gable asphalt-shingle roof shed on concrete footer on Cemetery property. Flush metal door in metal surround. Windows are 8-light casement in metal frames with cast concrete sills.
207. (C) **607? Schley Street** **c.1910**
House
One-story frame drop-sided dwelling with asphalt-shingle cross-gable on brick foundation. Front facing gable is pent, and contains one central 2/2 wood-frame double-hung window in plain wood surround. Sheltered in the ell is a shed roof porch supported with metal decorative poles. Entry is in corner of ell; a single glazed pane over raised panel wood door. The porch also contains one 2/2 window. A side gable smaller scale, broken-slope roofed addition is attached to the south elevation.
208. (C) **609 Schley Street** **c.1930** **Tudor Revival**
House
One-story frame dwelling with drop siding and asphalt-shingle, clipped side-gable roof with wide overhang with brackets at corners rests on a brick foundation. A steeply pitched Tudor inspired front gable with asymmetrical returns extends down and slightly projects to shelter enclosed front entrance. An interior brick chimney pierces the front slope. Front façade has five bays; w-w-d-w-w. Windows are 1/1 wood-frame double-hung with plain wood surrounds. Door is Craftsman style triple vertical-panes over single raised wood panel.
209. (NC) **611 Schley Street** **c.1980** **Ranch**
House
One-story frame, brick veneered dwelling has vinyl siding in central porch area and asphalt-shingle side-gable roof. Porch is inset and has arcaded wooden square posts and concrete deck. An oversize brick chimney dominates the left side of the façade. An open, but gable-roof walkway extends from the south

United States Department of the Interior
National Park Service

**NATIONAL REGISTER OF HISTORIC PLACES
CONTINUATION SHEET**

Section: 7

Page: 58

Itta Bena Historic District
Itta Bena, Leflore County Mississippi

elevation to a cross, front-gable three-car garage, all supported with square posts. Windows are 8/8 vinyl-clad double-hung with applied shutters. A front facing gable projects from the front façade to the right and contains vinyl siding and a triangular vent in the peak.

210. (NC) 613? Schley Street c.1980 Ranch
House

One-story dwelling has multi-hip roof with asphalt-shingle roof and rough stucco cladding. Flanking hip-roof projections form ell for central inset front porch, supported with white decorative metal stanchions and cornice. A secondary entrance to the left contains a modern six-light over four raised wood panel door and has an arched stoop supported with brackets. Windows are 8/8 wood-frame double-hung. North elevation also contains an entry door sheltered by a metal awning supported with metal poles.

211. (C) 200 Thurman Street c.1960
House

One-story frame dwelling has pyramidal hip-roof of asphalt-shingles, clad in vinyl siding and rests on a brick foundation. Windows are 4/4 and 6/6 wood-frame double-hung with applied shutters. A closed carport under a shed roof projects to the left. A shed roof projects to form a two-thirds width porch, supported on decorative metal posts, resting on a concrete deck. Façade is asymmetric and has four bays; w-d-w-w.

212. (C) 202 Thurman Street c.1950
House

One-story frame dwelling with side-gable roof of asphalt-shingles, clad in drop-siding rests on a brick foundation. Full-width front porch has been enclosed to the left and is sheltered by the broken slope. The right half is open and supported by a large knee brace at the corner. Windows are 6/6 wood-frame double-hung in plain wood surrounds. Façade has three bays w-w-w, with the entry accessed from the side of the enclosed portion of the porch.

213. (C) 304 Thurman Street c.1920
House

One-and-a-half story asphalt-shingle, cross-gable roof frame dwelling on a brick foundation is clad in drop siding with board-and-batten siding on the enclosed right half of the front porch. A hip roof covers the partially enclosed projecting porch in the ell, supported by a decorative metal pole. Windows are 1/1 wood-frame double-hung in wood surrounds. Three-bay façade; w-d-w. Wood door has a single pane over raised panel with 1-light transom in wood surround.

United States Department of the Interior
National Park ServiceNATIONAL REGISTER OF HISTORIC PLACES
CONTINUATION SHEETSection: 7 Page: 59 Itta Bena Historic District
Itta Bena, Leflore County Mississippi

214. (C) **305 Thurman Street** c.1950
Itta Bena Public Library
One-story, asphalt-shingle, hip-roof, brick-clad building on concrete slab. Symmetric north elevation faces Thurman Street, has five bays; w-w-d-w-w and contains the main entrance. Centrally located double-leaf wooden doors have 3-light over three recessed panels with 5-light sidelights and is sheltered by a projecting flat roof supported by decorative metal posts resting on a concrete pad. West elevation faces Main Street and has two centered entrance doors; single-light over triple-panel wood doors in wood surrounds sheltered by a projecting flat roof supported by decorative metal poles on concrete pad. Doors are flanked by one fixed-light over one hopper-light windows in wood-frames. Three horizontal single pane either awning or hopper in wood frame, placed near the eaves to the left of the doors.
215. (C) **404 Thurman Street** c.1915 Neo-Classical
House
One-and-a-half story frame dwelling has multi-hip asphalt-shingle roof with wide cornice and clapboard siding on a brick foundation. The central hip-roofed wall dormer contains four Craftsmen windows with 1/1 double-hung wood-frame with small square lights that frame the top light, in wood surround. A three-quarter width inset porch is supported by square wooden plain capped columns that rest on a clapboard knee wall. Asymmetrical façade has five bays; w-d-w-w-w. Wooden entry door contains a single oval light topped by a one-light transom. Windows are 1/1 in wide plain wood surrounds; the two windows on porch have applied shutters.
216. (NC) **501 Thurman Street** c.1985
House
One-story side-gable asphalt-shingle roof dwelling has brick veneer and stepped front facing gable to the right and stepped gable addition to the left. The front facing gables have board-and-batten siding in the peaks, and a set of 1/1 fixed windows. Irregular front façade of the main block contains four vertical single-pane fixed windows topped by a raised flush flat-panel roof. Entry is inset at the corner of the front and side gables. The east elevation contains a massive brick exterior chimney and side gabled attached garage.
217. (C) **505 Thurman Street** c.1925 Craftsman
House
One-and-a-half story asphalt-shingle, hip-roofed frame dwelling on a brick foundation is clad with clapboard and has wide wooden cornice at closed eaves. A slightly off-set to the right pedimented gabled dormer contains a tripartite window, with the center filled with a vent. The right corner of the full-width porch has been enclosed and the remainder contains pairs of 10-light three-quarter length casement windows topped with 4-light transoms, all in wood frames on a low knee wall. To the left is a shed roof open carport with decorative saw-tooth panels. A stuccoed interior chimney pierces south slope. Door details obscured by a Craftsman style wooden screen door.

United States Department of the Interior
National Park ServiceNATIONAL REGISTER OF HISTORIC PLACES
CONTINUATION SHEETSection: 7 Page: 60 Itta Bena Historic District
Itta Bena, Leflore County Mississippi

218. (NC) **507 Thurman Street** c.1970 **Ranch**
House
One-story, hip-roof brick clad dwelling on a concrete slab. Asymmetrical five bay façade is w-w-d-w-w. To the left of the centrally placed entrance are two 2/2 metal-frame double-hung windows with applied shutters. To the right is a large fixed pane flanked by 1/1 metal-frame double-hung with applied shutters. To the far right is an open carport supported by decorative metal stanchions.
219. (C) **600? Thurman Street** c.1920
House
One-story frame dwelling has asphalt-shingle, hip roof and clapboard siding on a brick foundation. Projecting hip roof shelters full-width front porch, supported on square wooden posts resting on a cement deck. Symmetric façade contains six bays; w-d-w-w-d-w. Doors are accessed by four wooden steps. Windows contain a single fixed light with one-light transom in a wood surround. Doors details are obscured by wooden screen doors and topped by a single light transom. An interior brick chimney pierces the front roof slope near the peak.
220. (C) **102 Wheeler Street** c.1950
Family Health Clinic
One-story flat-roof commercial building is clad in yellow common-bond brick has a metal band at cornice, capped with cast concrete, set on concrete slab foundation. Symmetrical 6-bay façade is d-w-w-w-d. Windows are three horizontal pane metal-frame hopper, flanked by flush steel doors. A flat metal roof projects over each entry, supported by metal poles. A brick wall projects to the outside of each doorway with two openings and matching brick planter spans the front of the building.
221. (C) **203 Wheeler Street** c.1940
House
One-story frame dwelling with front-facing stepped gable roof of asphalt-shingle, clad in asbestos-shingles on a brick foundation. Wide overhanging eave exposes rafter tails. The undercut front porch has been partially enclosed to the right, and to the left covered with lattice, with a central doorway with screen door and a 1/1 metal frame double-hung window with plain wood surround to the right.
222. (NC) **204 Wheeler Street** c.1940
House
One-story vinyl-clad frame dwelling with asphalt-shingle pyramidal hip roof with closed eaves over a brick foundation. A projecting front gable portico has vinyl siding in pediment and square vent and shelters the doorway, supported by square wood columns that rest on the concrete pad. Four bay façade is w-d-w-w. Windows are 4/4 wood-frame double-hung with applied shutters. Door is modern metal with large oval light. The application of synthetic siding, coupled with the addition of the portico on the façade damages the architectural integrity of this resource.

**United States Department of the Interior
National Park Service**

**NATIONAL REGISTER OF HISTORIC PLACES
CONTINUATION SHEET**

Section: 7

Page: 61

Itta Bena Historic District
Itta Bena, Leflore County Mississippi

**223. (NC) 205 Wheeler Street
House**

c.1970

One-story frame dwelling with brick and vertical wood siding cladding over a brick foundation has dominant front facing projecting gable with flared vergeboard, and wide closed eave. Gable front has two double 6/6 metal-frame double-hung windows under vertical wood siding in pediment, topped with a vent in peak. Broken slope from side gable shelters porch in the ell. The door is to the left and a double 6/6 metal frame double hung window to the right. Door is obscured by decorative screen door.

**224. (C) 207 Wheeler Street
House**

c.1940

One-story front facing clipped-gable clapboard frame dwelling with side gable addition to the rear on brick foundation. Wide eaves are bracketed on front, and rafter tails exposed on sides. Front porch has been screened, but battered square full length columns remain, with clapboard low wall between. Visible windows are 1/1 wood-frame double-hung. A shed roof open carport fills the ell, supported by square wood poles.

**225. (C) 301 Wheeler Street
House**

c.1910

One-and-a-half story frame dwelling with drop-siding and corner boards on a brick foundation. The main block has a hip-roof with a front facing gable roof projecting to the front right. Within the ell is a shed roof screened porch. Visible windows are 2/2 wood-frame double-hung in wood surrounds. Vegetation obscures most fenestration.

**226. (C) 303 Wheeler Street
House**

c.1930

One-and-a-half story frame dwelling clad in vinyl siding with brick foundation. Pyramidal hip roof has asphalt-shingles and features a centered gablet that contains a 2/2 metal-frame double-hung window and vinyl siding in pediment. Under the eave, a shed roof projects over full width front porch, supported by four Doric columns set on the wood deck. Asymmetrical façade with centrally located door and two 6/6 wood-frame double-hung windows with applied shutters.

**27. (C) 305 Wheeler Street
House**

c.1930

One-story frame dwelling with pyramidal asphalt-shingle hip roof is clad in vinyl siding sits on a brick foundation. A low shed roof projects over a wide central front porch, supported with decorative metal stanchions and brackets on a wood deck. The central doorway is flanked by a 1/1 metal-frame double-hung window to the left and fixed single pane window flanked by 2/2 metal-frame double-hung windows to the right. Both with applied shutters.

United States Department of the Interior
National Park Service

**NATIONAL REGISTER OF HISTORIC PLACES
CONTINUATION SHEET**

Section: 7

Page: 62

Itta Bena Historic District
Itta Bena, Leflore County Mississippi

228. (C) **306 Wheeler Street**
House

c.1920

One-and-a-half story frame dwelling with asphalt-shingle cross-gable roof and asbestos-shingle siding on a brick foundation. Gable front has returns and modest decorative brackets at corners and a single-light window in plain wood surround in center of pediment. Three-bay façade is w-d-w. A shed roof projects over the enclosed front porch which contains the entry and a window to the left. The window in the gable front is a 2/2 metal-frame in wood surround, to the left of the door is fixed large pane picture window flanked by 1/1 double-hung wood-frame windows with applied shutters. Door is three horizontal glazed panes over three raised panel wood door. An interior brick chimney pierces the peak.

229. (NC) **308 Wheeler Street**

c.1980

One-story brick-clad ranch with multi-hip asphalt-shingle roof rests on a brick foundation. Four bay façade is w- w-d-w. Roof extends to shelter recessed off-center entry, supported by brick columns. Windows are 6/6 vinyl double hung with applied shutters. Door details are obscured. To the right is an open carport supported on brick columns.

230. (C) **309 Wheeler Street**
House

c.1930

Multi-hip asphalt-shingle frame dwelling has shed roof dormer containing double 3/3 wood frame fixed windows, centered on main hip roof. Clad in asbestos-shingle siding over a low brick knee wall topped with a rowlock course and the wide, open eaves have exposed rafter tails. Screened porch obscures fenestration, but low brick wall remains. A secondary hip roof extends over open carport to the right, supported on square wood columns resting on square brick piers, separated by masonry screening knee wall.

231. (NC) **310 Wheeler Street**
House

c.1990

One-story brick clad dwelling with asphalt-shingle side-gable roof on a brick foundation. Asymmetrical façade has six bays, w-w-w-d-w-w. Windows are 1/1 double-hung metal-frame. Modern metal door has six raised panels and is recessed.

United States Department of the Interior
National Park Service

NATIONAL REGISTER OF HISTORIC PLACES
CONTINUATION SHEET

Section: 7

Page: 63

Itta Bena Historic District
Itta Bena, Leflore County Mississippi

232. (NC) 311? Wheeler Street
House

c.1980

One-story frame asphalt-shingled, side-gable dwelling with brick veneer and brick foundation. Six-bay façade is w-w-w-w-d-w. Windows are small-scale 1/1 wood-frame double-hung to the left of the off center door and a large fixed pane flanked by 1/1 wood frame to the right of the door. Door details are obscured by screen door. The roof projects on left half of façade to form a porch, supported on fluted columns that rest on the cement deck.

233. (C) 313 Wheeler Street
House

c.1940

One-story frame asbestos-shingle sided dwelling with front-facing gable roof of asphalt shingles, resting on a brick foundation. A half-size step gable on the left side of main block shelters the entrance, supported on wood posts that rest on a concrete deck. Three-bay façade is w-d-w. Windows are 6/6 wood-frame-double hung with plain wood surrounds. A broken slope extends from the left side to cover an open car port supported by metal poles, in front of a shed roof addition to the rear.

234. (C) 315 Wheeler Street
House

c.1920

One-story hip roof with asphalt-shingles rusticated cement block dwelling sits on a brick foundation. A full-width, undercut front porch is topped with a central pent gable with vertical siding and peak vent and is supported with Doric columns with simple caps on a cement deck. Façade is symmetric; w-d-w. Windows are 1/1 wood-frame double-hung in plain wood surrounds. Central door has a single-light transom and single-light over raised wood panel sidelights. Wood entry door has single raised panel under single glazed pane. To the right is a shed roof open carport with metal poles.

235. (C) 319 Wheeler Street
House

c.1940

One-story asphalt-shingle hip-roof frame dwelling with projecting front facing gable. Eaves are open with bracketed front gable and exposed rafter tails in main block. Inset front porch in front gable has been screened and has a metal awning. To the right is a broken slope covered carport. Fenestration is obstructed by screen porch.

236. (NC) 321? Wheeler Street
House

c.1970

One story frame, brick-clad dwelling with side gable asphalt-shingle roof which extends over open carport to the right. Windows are 8/8 wood-frame double-hung with applied shutters. Front slope extends over screened porch on façade.

**United States Department of the Interior
National Park Service**

**NATIONAL REGISTER OF HISTORIC PLACES
CONTINUATION SHEET**

Section: 8

Page: 64

Itta Bena Historic District
Itta Bena, Leflore County, Mississippi

Statement of Significance

The Itta Bena Historic District, Leflore County, Mississippi is eligible for listing on the National Register of Historic Places under Criterion A for local significance associated with Community Development and Planning. It is also eligible under Criterion A for local significance under Social History for its association with the Civil Rights movement. The district is eligible for listing under Criterion C for local significance for its association with Architecture.

Community Development and Planning

The City of Itta Bena is located in Leflore County, Mississippi. The town is located on the highest point between the Mississippi hill country and the Arkansas hill country to the west.³ As such it is a natural point of settlement, evidenced by archaeological finds. However, the historical record dates to 1541 when the Chakchiuma Indians settled the region, with villages along the Yalobusha and Tallahatchie Rivers. After 1770, when the Choctaw defeated the Chakchiuma, the region was occupied by Choctaw villages.⁴ The Treaty of Dancing Rabbit Creek, 1830, required the Choctaw to remove to Indian Territories to the west or adopt American ways. The treaty effectively opened the area to American settlers.

About 1846, Benjamin G. Humphreys, who later served as Governor, acquired a land patent on the banks of Roebuck Lake. He erected a modest plantation home which he called Itta Bena, derived from the Choctaw for "Home in the Woods." The City of Itta Bena grew from Humphrey's plantation. A post office was established in the Humphrey home in 1881.

The early development of Itta Bena parallels the growth of other Mississippi delta communities. The arrival of the railroad was the impetus for development in Itta Bena as it was throughout the region. In 1886, the Yazoo and Mississippi Valley Railroad introduced service to nearby Greenwood, a community already thriving due to the transportation avenue provided by the Yazoo River. Similarly, a seminal event in the development of Itta Bena came two years later in 1888, when the Georgia Pacific railroad was built through Humphrey's land. Almost immediately, J. L. Humphreys, the Governor's brother, and a Mr. Long built wood-frame stores on the right of way, along what is now Front Street.⁵ Further commercial development on both the south side of the railroad, along Front Street and the north side of the tracks, along North Front Street (now Humphreys Street) was rapid. After the City of Itta Bena was chartered in 1898, an engineer laid out a grid of north-south and east-west streets. The area south of the commercial district, north of Lakeside Road, west of Roebuck Lake and east of Allen Street became the main residential area, with a mix of schools and churches. Residential areas also developed north of the commercial district along Schley Street (Highway 7) which connects the city with Highway 82.

The commercial district parallel to the tracks and extending south along Basket Street, was well developed by 1905, and included a freight depot along the railroad right-of-way, a hotel, several grocery stores, shoemaker,

³ "Itta Bena, Miss., Homeseeker's Paradise." Published by The Itta Bena Business League, 1912. Mississippi Department of Archives and History Subject Files, "Itta Bena."

⁴ "Leflore County Historical Sketches." Mississippi Department of Archives and History Subject Files, "Leflore County Historical Sketches."

⁵ W.P.A. records, Mississippi Department of Archives and History Subject Files, "Itta Bena."

**United States Department of the Interior
National Park Service**

**NATIONAL REGISTER OF HISTORIC PLACES
CONTINUATION SHEET**

Section: 8 Page: 65 Itta Bena Historic District
Itta Bena, Leflore County, Mississippi

boarding houses and a drug store. In addition, the Itta Bena Cotton Oil Company had established a sizeable plant in an area along the tracks west of downtown, according to Sanborn fire insurance maps.

The appearance of Itta Bena's present-day commercial district is a direct result of devastating fires, another event shared by many small Delta communities early in the 20th century. The wood-frame structures quickly erected with the upsurge in commerce following the arrival of the railroads were particularly vulnerable to fires that occurred in 1897 and again in 1905. As a result, in a practice commonly adopted in communities around the state, all subsequent businesses were required to be constructed of brick.⁶

After the fire, the downtown commercial district had largely assumed its current configuration and appearance by 1909. A series of one-story brick commercial buildings facing Front Street east of Main Street and west of Public Road (now Lake Shore Drive) largely remain intact, although some have been lost due to later fires or demolition. These buildings generally have plate glass display windows and center doors topped by large transoms. In 1909, these stores were occupied by a variety of businesses, including general stores, hardware stores, drug stores, furniture stores and novelty stores. Today, some of the commercial spaces are vacant and suffer from deferred maintenance, and others contain small retail or service businesses.

As the town flourished, improvements included providing additional waiting rooms in the Southern Railroad Passenger Depot in 1914 "for passengers who find the mud inconvenient."⁷ The depot remained a landmark in the community until it was demolished in the 1970s. The cotton industry, inextricably tied to the railroad, expanded in Itta Bena by 1918, with the Buckeye Cotton Gin Oil Company operating a cotton gin at the west end on North Front Street (now Humphreys Street). The Georgia Pacific line connected Itta Bena with north-south lines providing access to Memphis and the north and New Orleans to the south. Unfortunately, Itta Bena's cotton-related industrial buildings are either not extant, have been rendered non-contributing resources through alteration or neglect or are separated from the historic district by non-contributing resources.

Many of the commercial buildings along North Front Street (now Humphreys Street) had also been built by 1918. These brick structures tended to be two-story buildings. Among the businesses found on North Front Street were the Bank of Itta Bena, now the Itta Bena City Hall, a large grocery store, an automobile repair business and a drug store. The second floors housed offices for physicians, dentists and the Chicasa Club, a men's club complete with a smoking room, a reading room and a gymnasium with a pool table. Many of these buildings are currently vacant, but the store fronts remain mostly intact.

The business district also extended south along Basket Street and Public Road (now Lake Shore Drive). These were primarily one-story brick commercial buildings. All of the early 1900-era buildings on Lake Shore Drive are gone, while many of the buildings on Basket Street have been altered so that their historic character is lost. One major exception is the two-story First National Bank Building (Inv. 5).

The commercial area retains its historic character, expressed through the intact storefronts, setbacks, massing and use of the buildings. Sidewalks shaded by mature trees flank the original brick-paved Humphreys and

⁶ "Itta Bena-Leflore Town Has Come a Long Way In Its 102 Years," *Jackson Daily News*, June 15, 1950.

⁷ "Southern to Build Additional Waiting Rooms." *Itta Bena Times*, January 17, 1914.

**United States Department of the Interior
National Park Service**

**NATIONAL REGISTER OF HISTORIC PLACES
CONTINUATION SHEET**

Section: 8 Page: 66 Itta Bena Historic District
Itta Bena, Leflore County, Mississippi

Front Streets, which in turn flank the railroad, further enhance the historic significance in the commercial section of this district.

The economic stimulus provided by the thriving cotton industry is reflected by the rapid population growth that Itta Bena experienced between 1900 and 1910. In this ten year span the population grew from 416 residents to 1,427. However, after that the population grew very slowly, reaching only 1,914 by 1960.⁸ As a result of this early growth and then static condition, the town boundaries were set early and have changed little over time. As the need for new housing arose, rather than expand, the trend was to build on vacant lots in established blocks or demolish existing houses and infill with new construction. There are few residential blocks that do not contain a mixture of early 20th century, mid-century and newer homes. However, the newer houses have largely retained the scale, massing and setbacks of the surrounding historic properties.

One street with a concentration of surviving early homes is the north section of Lake Shore Drive, where most houses face Lake Roebuck. The homes along this scenic, sidewalk-lined, two-lane street are well maintained and most sit on raised, landscaped lots that overlook the lake. Of the twenty-two homes along the street, ten were built between 1900 and 1920. This collection of homes includes several well-preserved Queen Anne examples, best exemplified by the one at 103 Lake Shore Street. (Inv. 100) These large and architecturally distinctive examples reflect the robust economic and community development that occurred in Itta Bena at the time of their construction.

Also built during this time period were two architecturally impressive and significant church buildings within the district. The First Methodist Church (Inv. 140) was organized in 1894 and the congregation erected a frame building (not-extant) in 1898 at the corner of Main Street and Cleveland Street. The much larger and more substantial current sanctuary was completed in 1912, with an education annex built to the south in 1964.⁹ The First Baptist Church (Inv. 145A) was built at 300 Main Street in c. 1914. An education building was built in 1957 and community building was added in 1980.

By 1925, a substantial industrial area had developed west of downtown Itta Bena that contained the large Itta Bena Co-op Compress Company, Itta Bena Coal and Ice Company, F. H. MacGruder Manufacturing and a sawmill. None of the buildings associated with this industry remain. The town's continued prosperity in this period is, however, reflected in the number of homes built between ca. 1920-1945. Of the two hundred forty-seven structures within the district, eighty are estimated to have been constructed during this time period. These include resources with architectural influences expressed through Craftsman (Inv. 144) and Tudor (Inv. 205) detailing as well as Minimal Traditional (Inv. 108) and simple vernacular cottages and bungalows. Mainly working or middle class housing, these structures are sprinkled throughout the district.

The need for a more effective educational system was also addressed at this time. In 1930, the Itta Bena Consolidated High School (Inv. 125) was built on Lakeside Drive, replacing the non-extant 1907 two-story brick schoolhouse located on Thurman Street between Main and Basket Streets. A secondary school, built on the Consolidated High School campus followed in 1940. Although now serving all the children of the

⁸ *Mississippi Statistical Summary of Population, 1880-1980*. Economic Research Department, Mississippi Power & Light, 1983.

⁹ William L. Jenkins. *Mississippi United Methodist Churches*. Franklin, TN: Providence House Publishers, 1998.

**United States Department of the Interior
National Park Service**

**NATIONAL REGISTER OF HISTORIC PLACES
CONTINUATION SHEET**

Section: 8 Page: 67 Itta Bena Historic District
Itta Bena, Leflore County, Mississippi

community, this was originally a white school. Black students attended the Leflore County Training School and now used as the L.T. Brazil Community Center which is located outside of the historic district, separated from the district by a large concentration of modern resources. Like many Mississippi towns of that era, housing patterns were distinct for whites and African-Americans. The traditional African-American neighborhood is located to the northwest of the current historic district. A preliminary architectural survey of this area resulted in the determination that there are no contiguous historic resources connecting the neighborhood with the district.

Residential construction within the historic district continued slowly in the late 1940's through 1959 as in-fill and on building lots along the periphery of established neighborhoods. Approximately twenty structures were built within the district during this time period, mostly vernacular residences with a few Ranch (Inv. 52) and Minimal Traditional (Inv. 148) examples. In addition, the community developed, and the Presbyterian Church (Inv. 172), designed by Thomas Henry Johnston, Jr. was built in 1946 on Schley Street just north of Humphreys. In addition the modern Itta Bena Clinic (Inv. 220) and Library (Inv. 214) were added to the neighborhood south of Humphreys Street in the 1950s.

The Itta Bena Historic District compares to historic districts in other Mississippi Delta communities through a similarity in the variety of architectural styles favored during the period of significance as described above. It also reflects the typical commercial growth experienced by Itta Bena and other Delta cities and towns which resulted from the growing web of railroads constructed late in the 19th and early 20th centuries throughout the region. Like neighboring Greenwood, early frame commercial buildings that sprang up quickly as the tracks were constructed were consumed by fire and replaced with one and two-story brick commercial buildings that still exist. However, in contrast to continued commercial expansion in Greenwood from 1910-1950 that resulted in the demolition of many of the residential resources and replacement with parking lots and intrusive drive-in facilities, Itta Bena's relatively static economy resulted in the retention of much of the residential stock within the district contemporary to the commercial resources.¹⁰ The early residences, along with those constructed throughout the period of significance, illustrate the growth pattern of the Itta Bena district. While commercial development stagnated during the 1930s and 1940s, the population and construction of housing held fairly steady, evidenced by the sixty-four resources that date to that period within the district. This dichotomy may be explained by a more mobile society resulting from improved roadways and increased automobile use in which residents lived in Itta Bena, but commuted to neighboring Greenwood to work.

Civil Rights

Many Civil Rights events of national and statewide significance took place in Mississippi in the 1950s and 1960s. Many of these important events associated with the movement occurred in small towns throughout the state, and were highly significant to the citizens of those towns. The City of Itta Bena was the site of such incidents and one resource in the district illustrates that confrontation in a stark fashion.

¹⁰ *Central Commercial & Railroad Historic District National Register Nomination; Greenwood, Mississippi.* Mimi Warren Miller; The Historic Natchez Foundation. 1985.

**United States Department of the Interior
National Park Service**

**NATIONAL REGISTER OF HISTORIC PLACES
CONTINUATION SHEET**

Section: 8

Page: 68

Itta Bena Historic District
Itta Bena, Leflore County, Mississippi

Civil Rights activities in Itta Bena centered on the Hopewell Methodist Baptist Church, located on Douglas Street, just west of and separated from the historic district. Early organizers included Willie E. Baxter McGee, Ilean Loggins Echols, Scott Harris, Kenneth Echols, Mrs. Willie Brown, Inella Page, Mr. Dennis Bevels, Mrs. Rosie Williams, Rev. Daniel Strong, Mrs. Mary Strong, Mr. Percy Long, Hattie B. Long, Mrs. Fliezzella Strong, Robert and Charlie Strong, Jr., Clint and Clinton Loggins, Colton Ginn, Willie Le Ray, James Coffey, Booker Nelson, James Reed, J. B. Williams, Nick Hampton, Joe Glover, Charles King, Charles Morehead, James Brown, George Brown, Charles Young, Mary Helen and Celia Edwards, John Redd, Mary Robinson, Willie Lee Payton. Other people involved in the movement were Mrs. Lela Pitts, Mrs. Minnie Dunlap, Re. Eddie Roberts, Mrs. Hattie McCullough, Mrs. Hattie Pepper, Betty and Ernestine Anderson, Jim Strong, Annie Bertha Conley, Mrs. Birther Lattimore, Rosie and Mary Ann Hendrix, Mrs. Ella Mae Hall, Mrs. Annie Bell Young, Mrs. Annie Bell Payne, J.C. O'Banner and many others. Typical of Civil Rights organization, the early activities in Itta Bena concentrated on voter registration. In response to literacy requirements, adult education classes were formed and citizenship classes held in churches and private residences.

Beginning in April 1963, nightly meetings were held at Hopewell M.B. Church, the only venue open to civil rights activities. Speakers encouraged the crowd, and taught techniques to protect people if they were arrested. The church also became a distribution center for food and clothing. By June 1963, the organizers had received threats and sought protection from the Itta Bena police. An officer, remembered as "Gunslinger," was assigned to watch the church during a meeting on June 18, 1963. Despite this effort, the meeting was interrupted by a tear gas bomb thrown into the church. Those attending the meeting gathered outside the church and formed a peaceful procession to go the police department and ask what had happened to the officer assigned to protect the meeting.

As they marched toward downtown, people in a truck threw bottles and additional tear gas at the marchers. The procession arrived in downtown Itta Bena where they found Gunslinger, who told them he had received a false call to leave the church. He encouraged the marchers to return to the church and resume their meeting and assured them he would continue to stand guard.

As they began to return to the church, Chief of Police, Ed Webber arrived on the scene. Webber became irate and ordered the crowd of about sixty people arrested. The marchers were taken to the Itta Bena City Jail (Inv. 1) [Photo 28], known as the "Caboose." The marchers were crowded into the jail and held in a small room for more than an hour before being taken to the county jail in Greenwood on school busses.

The next day the protesters were found guilty of disturbing the peace and disorderly conduct and sentenced to six months in jail and a \$500.00 fine. Forty-five adults were transported to the Leflore County Penal Farm. Many of the men were sent to work on the roads, while the women, including Mrs. Millie Brown, and Mrs. Lillie Stewart, the oldest members of the group, were required to work in the kitchen. After a "no food-no work" demonstration, some of the group eventually served time at the State Penitentiary in Parchman, Mississippi.

The events of June 18-19, 1963 were but one small vignette in the broad saga of the Civil Rights movement. However, to the citizens of Itta Bena it remains a seminal event in the struggle for equal protection and participatory democracy. The Itta Bena City Jail remains as a visual reminder of the price paid by some members of that community to insure that constitutional rights were extended to all citizens. Due to the central

**United States Department of the Interior
National Park Service**

**NATIONAL REGISTER OF HISTORIC PLACES
CONTINUATION SHEET**

Section: 8

Page: 69

Itta Bena Historic District
Itta Bena, Leflore County, Mississippi

role the Civil Rights movement played at all levels of historic significance, these events are exceptionally significant.

Architecture

The Itta Bena Historic District contains the most significant collection of public, commercial, residential and institutional buildings in the City of Itta Bena. With a Period of Significance from 1888 to 1959, the district contains examples of many architectural styles and building forms popular in small Mississippi delta cities for over seventy years. Although the same Jim Crow attitude that pervaded other Mississippi communities resulted in marked racial segregation in housing, the Itta Bena Historic District does not clearly reflect that history. The traditionally African-American neighborhood is located to the west of the district and is not included in this nomination since there are no extant buildings of sufficient age to physically connect the district with that neighborhood.

The oldest man-made feature in Itta Bena is the Columbus and Greenville Railroad (formerly the Georgia Pacific), built in 1888, which bisects the city north and south. Flanked by the commercial district, the railroad ignited the early rapid growth of the city and provided access to markets for the agricultural goods processed in the city's mills and gins. The railroad continues to operate, although there are no stops in Itta Bena.

Many of the commercial buildings along Front Street, built c. 1905, retain their Italianate detailing. The building at 131/133 Front Street (Inv. 58) [Photo 22] is a typical, but well maintained example. The store retains the cast-iron storefront with wood bulkheads and transom windows. A simplified cornice is expressed in brick.

The architectural styles for residences constructed in the Itta Bena Historic District within the period of significance typically reflect those styles favored nationally and include Queen Anne, Romanesque Revival, Neo-Classical, Colonial Revival, Tudor Revival, Craftsman, Minimal Traditional and Ranch. There are also a substantial number of homes that display no detailing specific to a particular style, but simply fulfill basic housing requirements.

One of the earliest recognizable styles found within the neighborhoods of the Itta Bena Historic District is represented by the Queen Anne. There are fourteen residences that exhibit Queen Anne detailing sprinkled throughout the district. Introduced to America at the Philadelphia Centennial Exposition by an English exhibit, the Queen Anne style was widely popular in the United States in the period roughly between 1880 and 1900. It remained popular in Mississippi into the first decades of the 20th Century. Queen Anne detailing, including scalloped shingles, turned spindles and lacy details were well-suited to mass production in the emerging post-war industrial America. The rapidly expanding network of railroads provided the means to disseminate manufactured architectural details to locations far away from the site of production. The development of the Queen Anne style in Itta Bena follows the arrival of the railroad in 1888 and several examples remain that date to early in the twentieth century. Five examples of the Queen Anne style are found on Lake Shore Street, north of town, represented by the house at 103 Lake Shore Street (Inv.100) [Photo 12], built c. 1915. Another fine illustration is the house at 423 Schley Street (Inv. 189) [Photo 15].

Although there is only one Romanesque Revival example in the district, it is an architecturally distinctive and significant resource. The Romanesque Revival style developed in Germany in the early years of the

United States Department of the Interior
National Park Service

**NATIONAL REGISTER OF HISTORIC PLACES
CONTINUATION SHEET**

Section: 8 Page: 70 Itta Bena Historic District
Itta Bena, Leflore County, Mississippi

nineteenth-century. It arose out of a desire for a national style that reflected that nation's heritage. In France and England, architects turned to Gothic antecedents in defining a national style. German architects turned to the example of medieval Romanesque buildings found in Germany. They adopted the *Rundbogenstil*, or rounded arch style. The Romanesque Revival style is recognized by the use of rounded or semi-circular arches for doors and window openings. Although the exterior walls are largely smooth, rounded arches may be used decoratively, with corbel tables often used in belt courses to mark floor divisions or as decorative elements along the eaves. This style became popular in the United States in the late nineteenth and early twentieth century, especially for courthouses, university campuses and religious structures. In 1911-1912, the impressive First Methodist Church, 201 Main Street (Inv.140) [Photo 6], was constructed in Itta Bena. It is an outstanding local example of a Romanesque Revival style building and reflects the prosperity experienced by the community during the period of construction. The rounded arches seen in the entrances, repeated in the stained glass windows and the gable wall of the west face are all markers of the Romanesque Revival style. When the church added an education building in the mid-1960s, arched windows were used to pay homage to the historic church building.

A revived interest in classical architecture was encouraged by the popular response to the White City of the 1893 World's Fair in Chicago, and this interest was maintained throughout the country early in the twentieth century. Architects working in the Neo-Classical style looked to Greek and Roman precedents for detailing. There are several examples of Neo-Classical architecture constructed in Itta Bena between 1900 and 1920 within the district. The finest example is the First Baptist Church, 301 Main Street (Inv. 145) [Photo 7], c. 1914. The church building is attributed to architect James E. Greene, who also designed the First Methodist Church in Batesville, MS (NR-2003) and the First Baptist Church in Pontotoc, MS (NR-1993), as well as eleven other churches in Mississippi towns. The quarter-round-shaped building features two front facades, each with a semi-recessed tetrastyle portico in the Corinthian order. Another distinguished example is the First National Bank Building, 104 Basket Street (Inv. 5) [Photo 8], built in 1919. This two-story brick commercial building features an ashlar façade, three-bay composition in the Corinthian order consisting of a very shallow distyle engaged portico projecting slightly forward from an entablature carried by corner pilasters, surmounted by an unadorned parapet. There are relatively few Neo-Classical style residences within the Itta Bena Historic District, but the house at 307 Schley Street (Inv. 178) [Photo 23], built c. 1915, is one example.

Still other architects seeking inspiration from historic styles looked to more recent times. They adopted elements popular in colonial America, reflected in the Georgian and Federal styles. The Colonial Revival became popular in the early decades of the 20th century and remained popular into contemporary times. The best example of the Colonial Revival style in the Itta Bena Historic District is the impressive residence at 503 Catchings Street (Inv. 36) [Photo 18], built about 1920.

Although commercial development eventually stagnated, residential construction held steady in Itta Bena 1920-1950. Not surprisingly, architectural styles found here reflect those popular nationally during the same time period. It was then that many architects and builders took the search for historic precedent to medieval examples. There are four residences within the district that prominently display Tudor Revival detailing, best illustrated by the house at 605 Schley Street (Inv. 205) [Photo 14], c. 1930. Another example is the house at 400 Schley Street, (Inv. 181) [Photo 29], c. 1940.

**United States Department of the Interior
National Park Service**

**NATIONAL REGISTER OF HISTORIC PLACES
CONTINUATION SHEET**

Section: 8

Page: 71

Itta Bena Historic District
Itta Bena, Leflore County, Mississippi

During much of the time the eclectic revival styles were popular, the Craftsman style provided an alternative idiom. Arising from the Arts and Crafts movement, the Craftsman style was popularized by mass market publications like *House Beautiful* and *Good Housekeeping*. This style is well represented in the Itta Bena Historic District through more than twenty examples that display Craftsman detailing built between the 1920s and continuing into the 1940s. The houses at 305 Lake Shore Street (Inv. 115) [Photo 25], c. 1920, and 206 Main Street (Inv. 144) [Photo 17] reflect the elements of the style through bracketed eaves, battered porch columns and window details.

After the Depression to just prior to World War II a new style now called Minimal Traditional emerged which combined and simplified elements of earlier styles. Smaller, mainly one-story homes gained popularity as returning servicemen sought inexpensive single-family homes. Working and middle class residents embraced this modest style and several homes within the Itta Bena Historic District reflect this trend. Examples of Minimal Traditional houses are found at 201 Lake Shore Street (Inv. 108) [Photo 13], c. 1940, and 307 Lamar Street (Inv. 128), c. 1950.

During the 1950s, and continuing into the 1960s, the Ranch house became popular. The rambling, horizontal houses were best suited to suburban sites, but in Itta Bena were used as infill on vacant properties in town, and as replacements for older structures. The Ranch style house is represented in the Itta Bena Historic District by 101 Cotton Street (Inv. 51) [Photo 26], c. 1959, and 217 Lake Shore Street (Inv. 113) [Photo 27].

Throughout the Period of Significance, many residents of Itta Bena chose to build houses which were not based on clear stylistic or high-style designs. Quite often these residences have hipped roofs, covered porches and very minimal to no distinctive architectural detailing which would identify them with a particular style. While not architecturally distinctive, these resources retain a basic uniformity of massing and setback so that they blend with surrounding structures. These vernacular houses add to the architectural and social diversity of the community and can be recognized as a class of their own.

Itta Bena is a smaller city than nearby communities such as Greenwood or Indianola. As a result the functional range of buildings is limited which has had a concomitant result of limiting the range of architectural styles represented in the district. Due to its location Itta Bena served a much smaller region as a commercial center than Indianola (Indianola Historic District, NR-pending), Greenwood (Central Commercial and Railroad Historic District, NR-1985) or Cleveland (Downtown Cleveland Historic District, NR-1999) which resulted in much larger districts and more diverse commercial development in those communities. Itta Bena experienced rapid growth in its early years so there have been few subdivisions annexations so there are fewer discrete neighborhoods which reflect concentrated development over a limited span of time such as the River Road & Western Downtown Residential Historic District (NR-1986.)

**United States Department of the Interior
National Park Service**

**NATIONAL REGISTER OF HISTORIC PLACES
CONTINUATION SHEET**

Section: 9

Page: 72

Itta Bena Historic District
Itta Bena, Leflore County, Mississippi

Bibliography

A Field Guide to American Houses. McAlester, Virginia and Lee. Alfred A Knopf, New York. 2003.

Central Commercial and Railroad District National Register Nomination. Mary Warren Miller. 1985.

Leflore County Historical Sketches. Mississippi Department of Archives and History Subject Files: "Leflore County Historical Sketches."

Itta Bena, Mississippi, Homeseeker's Paradise. Itta Bena Business League. 1912. Mississippi Department of Archives and History.

Itta Bena. W.P.A. records, Mississippi Department of Archives and History Subject Files: "Itta Bena."

Itta Bena-Leflore Town Has Come a Long Way In Its 102 Years. Jackson Daily News. June 15, 1950.

A History of Mississippi. McLemore, Richard Aubrey. University & College Press of Mississippi. 1973.

Mississippi United Methodist Churches. Jenkins, William L.. Providence House Publishers, 1998.

Mississippi Statistical Summary of Population, 1880-1980. Economic Research Department, Mississippi Power & Light. 1983.

Mississippi Department of Archives and History. Statewide Survey Files.

Southern to Build Additional Waiting Rooms. Itta Bena Times. January 17, 1914.

Sanborn Insurance Maps, 1905, 1909, 1918, 1925, 1925-1945.

10. Geographical Data

Acreage of Property: approximately 115 acres

UTM References:	Zone	Easting	Northing		Zone	Easting	Northing
A	15	748590	3710300	C	15	749380	3708350
B	15	749260	3710300	D	15	748260	3708260

___ See continuation sheet.

Verbal Boundary Description See continuation sheet.

Boundary Justification: See continuation sheet.

11. Form Prepared By

name/title: William Gatlin/Susan Tietz	date: April 10, 2009
organization: Mississippi Department of Archives & History	telephone: 601-576-6940
street & number: P.O. Box 571	zip code: 39205
city or town: Jackson	state: MS

Additional Documentation

Submit the following items with the completed form:

Continuation Sheets

Maps

A USGS map (7.5 or 15 minute series) indicating the property's location.

A sketch map for historic districts and properties having large acreage or numerous resources.

Photographs

Representative black and white photographs of the property.

Additional items (Check with the SHPO or FPO for any additional items)

Property Owner(s)

name:	telephone:
street & number:	zip code:
city or town:	state:

Paperwork Reduction Act Statement: This information is being collected for applications to the National Register of Historic Places to nominate properties for listing or determine eligibility for listing, to list properties, and to amend existing listings. Response to this request is required to obtain a benefit in accordance with the National Historic Preservation Act, as amended (16 U.S.C. 470 et seq.).

Estimated Burden Statement: Public reporting burden for this form is estimated to average 18.1 hours per response including the time for reviewing instructions, gathering and maintaining data, and completing and reviewing the form. Direct comments regarding this burden estimate or any aspect of this form to the Chief, Administrative Services Division, National Park Service, P.O. Box 37127, Washington, DC 20013-7127; and the Office of Management and Budget, Paperwork Reductions Projects (1024-0018), Washington, DC 20503.

United States Department of the Interior
National Park Service

**NATIONAL REGISTER OF HISTORIC PLACES
CONTINUATION SHEET**

Section: 10

Page: 73

Itta Bena Historic District
Itta Bena, Leflore County, Mississippi

GEOGRAPHICAL DATA

Boundary Description

The boundary for the Itta Bena Historic District is shown on the accompanying USGS map.

Boundary Justification

This boundary includes a cohesive example of residential and commercial historic resources, representative of the development and growth of this small Mississippi Delta community during the period of significance.

United States Department of the Interior
National Park Service

**NATIONAL REGISTER OF HISTORIC PLACES
CONTINUATION SHEET**

Section: Photographic Information Page:74 Itta Bena Historic District
Itta Bena, Leflore County, Mississippi

PHOTOGRAPHS

The following information is the same for all photographs:

1. Itta Bena Historic District
2. Leflore County Mississippi
3. Susan Tietz; Mississippi Department of Archives and History
4. April 2008
5. Mississippi Department of Archives and History

Photographs denoted with * were printed from a digital image and correspond with digital images contained on accompanying CD.

- | | | |
|-----------------|-------|---|
| Photo 1 of 29* | 0001. | Streetscape Humphreys Street, view to west (<i>MS_LefloreCounty_IttabenaHD_0001</i>) |
| Photo 2 of 29* | 0002. | Streetscape Humphreys Street, view to east (<i>MS_LefloreCounty_IttabenaHD_0002</i>) |
| Photo 3 of 29* | 0003. | Streetscape Front Street, view to southwest (<i>MS_LefloreCounty_IttabenaHD_0003</i>) |
| Photo 4 of 29* | 0004. | Streetscape Front Street, view to southeast (<i>MS_LefloreCounty_IttabenaHD_0004</i>) |
| Photo 5 of 29* | 0005. | Columbus & Greenville Railroad, view to east (<i>MS_LefloreCounty_IttabenaHD0_0005</i>) |
| Photo 6 of 29 | 0006. | First United Methodist Church (201 Main St.), view to southeast |
| Photo 7 of 29 | 0007. | First Baptist Church (301 Main St), view to southwest |
| Photo 8 of 29* | 0008. | Former First National Bank Building (Basket St.), view to nw
(<i>MS_LefloreCounty_IttabenaHD_0008</i>) |
| Photo 9 of 29 | 0009. | Itta Bena Consolidated School (Lake Side), view to south |
| Photo 10 of 29* | 0010. | Streetscape of Lake Shore Street, (view to north) (<i>MS_LefloreCounty_IttabenaHD_0010</i>) |
| Photo 11 of 29 | 0011. | View of shore Roebuck Lake, (view to east) |
| Photo 12 of 29 | 0012. | 103 Lake Shore Street, (view to west) |
| Photo 13 of 29 | 0013. | 201 Lake Shore Street, (view to west) |
| Photo 14 of 29 | 0014. | 605 Schley Street, (view to west) |
| Photo 15 of 29 | 0015. | 423 Schley Street, (view to west) |
| Photo 16 of 29 | 0016. | 304 Basket Street, (view to west) |
| Photo 17 of 29 | 0017. | 206 Main Street, (view to west) |
| Photo 18 of 29* | 0018. | 503 Catchings Street, (view to southwest) (<i>MS_LefloreCounty_IttabenaHD_0018</i>) |
| Photo 19 of 29 | 0019. | 102 Wheeler Street, (view to west) |
| Photo 20 of 29* | 0020. | 24 Hour Fueling Station, Schley Street, (view to west)
(<i>MS_LefloreCounty_IttabenaHD_0021</i>) |
| Photo 21 of 29 | 0021. | 407 George Street, (view to north) |
| Photo 22 of 29* | 0022. | 131/133 Front Street (view to south) (<i>MS_LefloreCounty_IttabenaHD_0022</i>) |
| Photo 23 of 29* | 0023. | 307 Schley Street (view to west) (<i>MS_LefloreCounty_IttabenaHD_0023</i>) |
| Photo 24 of 29* | 0024. | 100 Martin Luther King (view to north) (<i>MS_LefloreCounty_IttabenaHD_0024</i>) |
| Photo 25 of 29* | 0025. | 305 Lake Shore Street (view to west) (<i>MS_LefloreCounty_IttabenaHD_0025</i>) |
| Photo 26 of 29* | 0026. | 101 Cotton Street (view to north) (<i>MS_LefloreCounty_IttabenaHD_0026</i>) |
| Photo 27 of 29* | 0027. | 217 Lake Shore Street (view to west) (<i>MS_LefloreCounty_IttabenaHD_0027</i>) |
| Photo 28 of 29* | 0028. | Itta Bena Jail (view to southwest) (<i>MS_LefloreCounty_IttabenaHD_0028</i>) |
| Photo 29 of 29* | 0029. | 400 Schley Street (view to east) (<i>MS_LefloreCounty_IttabenaHD_0029</i>) |

Proposed Itta Bena Historic District
Itta Bena, Leflore County, Mississippi

- Contributing Resource
- Non-Contributing Resource
- District Boundary
- P Photograph Number
- V Vacant Lot

NOT TO SCALE

N



UNITED STATES DEPARTMENT OF THE INTERIOR
NATIONAL PARK SERVICE

NATIONAL REGISTER OF HISTORIC PLACES
EVALUATION/RETURN SHEET

REQUESTED ACTION: NOMINATION

PROPERTY NAME: Itta Bena Historic District

MULTIPLE NAME:

STATE & COUNTY: MISSISSIPPI, Leflore

DATE RECEIVED: 8/21/09 DATE OF PENDING LIST: 9/08/09
DATE OF 16TH DAY: 9/23/09 DATE OF 45TH DAY: 10/04/09
DATE OF WEEKLY LIST:

REFERENCE NUMBER: 09000785

REASONS FOR REVIEW:

APPEAL: N DATA PROBLEM: N LANDSCAPE: N LESS THAN 50 YEARS: N
OTHER: N PDIL: N PERIOD: N PROGRAM UNAPPROVED: N
REQUEST: N SAMPLE: N SLR DRAFT: N NATIONAL: N

COMMENT WAIVER: N

ACCEPT RETURN REJECT 9.30.09 DATE

ABSTRACT/SUMMARY COMMENTS:

**Entered in
The National Register
of
Historic Places**

RECOM./CRITERIA _____

REVIEWER _____ DISCIPLINE _____

TELEPHONE _____ DATE _____

DOCUMENTATION see attached comments Y/N see attached SLR Y/N

If a nomination is returned to the nominating authority, the nomination is no longer under consideration by the NPS.



ITTA BENA HISTORIC DISTRICT
LEFLORE COUNTY, MS - 0001



ITTA BENA HISTORIC DISTRICT
LE FLORE COUNTY, MS, 0002



Hammer's
USED CARS
BUY - SELL - TRADE - REPAIRS
800-555-1234

TYRONE'S
TYRONE'S

Coca-Cola

MOTOR OIL



3

ITTA BENA HISTORIC DISTRICT
LEFLORE COUNTY, MS, 0003



A & C FOOD MARKET

Itta Bena

ITTA BENA HISTORIC DISTRICT
LE FLORE COUNTY, MS, 0004



ITTA BENA HISTORIC DISTRICT
LEFLORE COUNTY, MS, 0005



6)
First Methodist

ITTA BENA HISTORIC DISTRICT
LE FLORE COUNTY, MS, 0006

5015:28



FIRST BAPTIST MAIN THURMAN

ITTA BENA HISTORIC DISTRICT
LEFLORE COUNTY, MS, 0007

5017 21



ITTA BENA HISTORIC DISTRICT
LEFLORE COUNTY, MS, 0008



ITTA BENA HS

ITTA BENA HISTORIC DISTRICT
LE FLORE COUNTY, MS, 0009

5617:6



I++ A BENA HISTORIC DISTRICT,
LEFLORE COUNTY, MS, 0010



ROEBUCK LAKE

11

ITTA BENA HISTORIC DISTRICT
LEFLORE COUNTY, MS, 0011

501241



103 LAKESHORE DRIVE

12

ITTA BENA HISTORIC DISTRICT
LEFLORE COUNTY, MS, 0012

5011: 4



201 LAKESHORE DRIVE
IHA BENA HISTORIC DISTRICT
5/7/2008

(13)

IHA BENA HISTORIC DISTRICT
LEFLORE COUNTY, MS, 0013



605 SCHLEY

14

ITTA BENA HISTORIC DISTRICT
LE FLORE COUNTY, MS, 0014

5012.13



THE ABENA Historic District
423 Schley Street
Leflore County - Mississippi
5-7-2008 - MDAW
View to West 0015



304 BASKET ST

16

ITTA BENA HISTORIC DISTRICT
LEFLORE COUNTY, MS, 0016

5015 10



806 Main St

ITTA BENA HISTORIC DISTRICT
LEFLORE COUNTY, MS, 0017

5017.23



187

ITTA BENA HISTORIC DISTRICT
LE FLORE COUNTY, MS, 0018

Epson Professional Paper

Epson Professional Paper

EPSON



102 Wheeler St

19

ITTA BENA HISTORIC DISTRICT
LEFLORE COUNTY, MS, 0019

5014 16



24hr

Automated
FUELING

We Accept All Major Credit Cards

Shell-Select The Finest Fuel Available

20

ITTA BENA HISTORIC DISTRICT
LEFLORE COUNTY, MS 0020



407 George

ITTA BENA HISTORIC DISTRICT
LEFLORE COUNTY, MS. 0021

5018



ITHA BENA HISTORIC DISTRICT
LEFLORE COUNTY, MS, 0023



ITTA BENA HISTORIC DISTRICT
LEFLORE COUNTY, MS. 0024



ITTA BENA HISTORIC DISTRICT
LEFLORE COUNTY, MS, 0025



ITTA BENA HISTORIC DISTRICT
LEFLORE COUNTY, MS, 0026



ITTA BENA HISTORIC DISTRICT,
LEFLORE COUNTY, MS, 0027



ITTA BENA HISTORIC DISTRICT
LE FLORE COUNTY, MS, 0028



ITTA BENA HISTORIC DISTRICT
LEFLORE COUNTY, MS, 0029

Missing Core Documentation

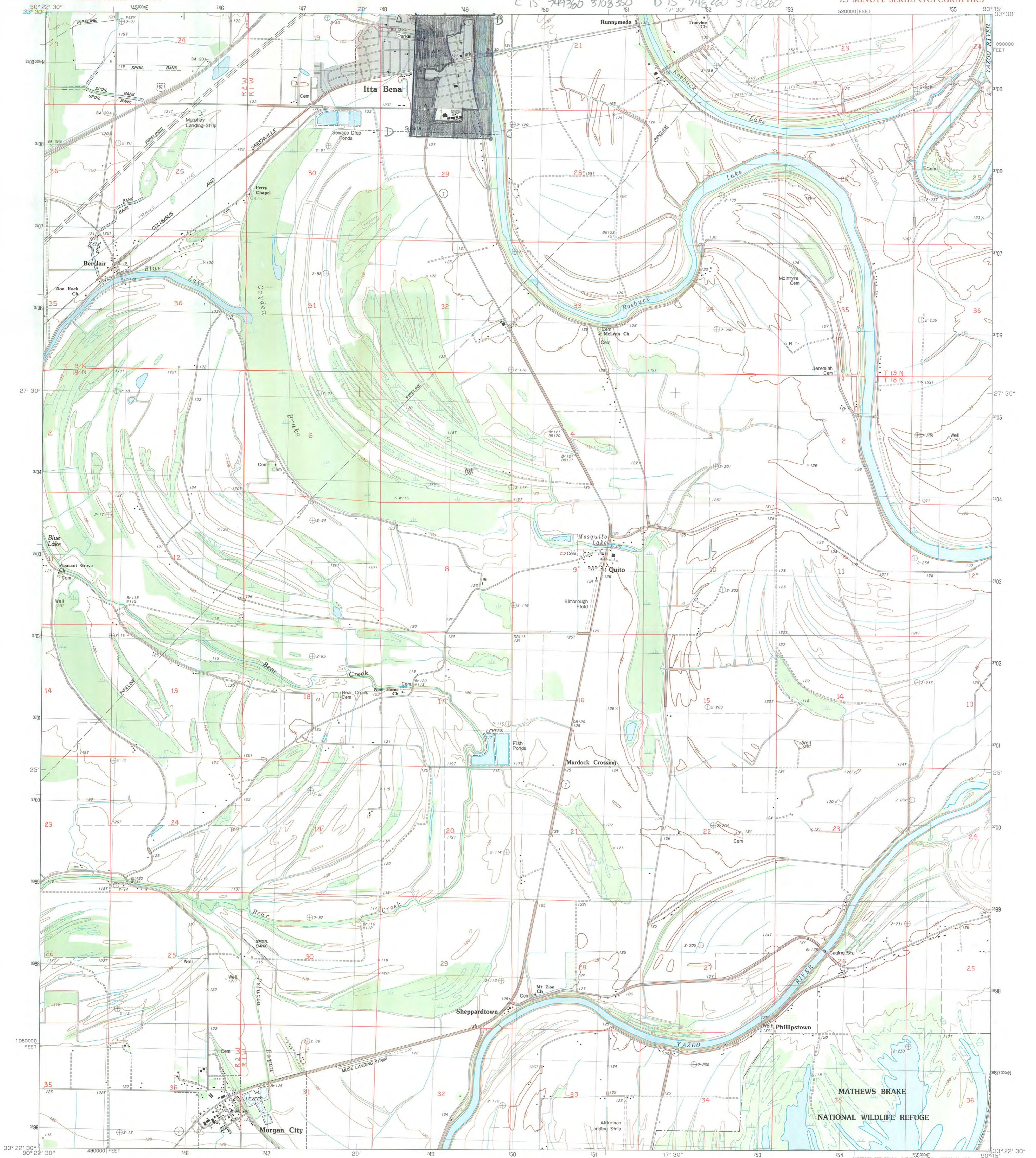
Property Name	County, State	Reference Number
Itta Bena Historic District	Leflore County, MS	09000785

The following Core Documentation is missing from this entry:

Nomination Form

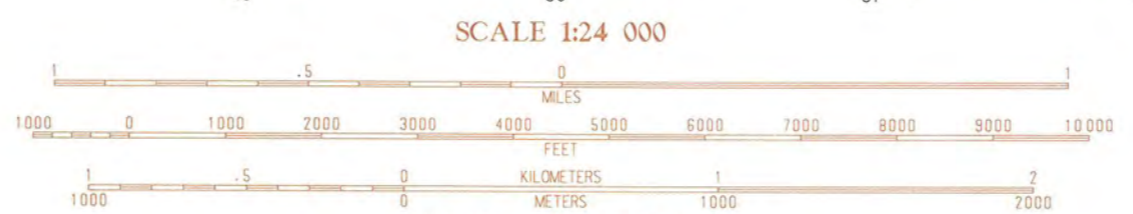
Photographs (#22)

USGS Map



PRODUCED BY THE UNITED STATES GEOLOGICAL SURVEY
CONTROL BY U.S.G.S. AND NOS/NOAA
COMPILED FROM AERIAL PHOTOGRAPHS TAKEN 1983
FIELD CHECKED 1982. MAP EDITED 1983
PROJECTION TRANSVERSE MERCATOR
GRID: 1000-METER UNIVERSAL TRANSVERSE MERCATOR ZONE 15
1000-FOOT STATE GRID TICKS MISSISSIPPI WEST ZONE
UTM GRID DECLINATION 129° EAST
1983 MAGNETIC NORTH DECLINATION 3°30' EAST
VERTICAL DATUM NATIONAL GEODETIC VERTICAL DATUM OF 1929
HORIZONTAL DATUM 1927 NORTH AMERICAN DATUM
To place on the predicated North American Datum of 1983,
move the projection lines as shown by dashed corner ticks
(11 meters south and 8 meters east)
There may be private inholdings within the boundaries of any
Federal and State Reservations shown on this map
No distinction made between houses, barns, and other buildings
Gray tint indicates area in which selected buildings are shown

PROVISIONAL MAP
Produced from original
manuscript drawings. Informa-
tion shown as of date of
photography.



SCALE 1:24 000
CONTOUR INTERVAL 5 FEET
CONTROL ELEVATIONS SHOWN TO THE NEAREST 0.1 FOOT
OTHER ELEVATIONS SHOWN TO THE NEAREST FOOT
To convert feet to meters multiply by 30.48
To convert meters to feet multiply by 3.2808



QUADRANGLE LOCATION

ROAD LEGEND
Improved Road
Unimproved Road
Trail
Interstate Route
U.S. Route
State Route

1	2	3	1 Bear Cut Bayou
2	3	4	2 Shellmound
3	4	5	3 Greenwood
4	5	6	4 Colony Town
5	6	7	5 Sison
6	7	8	6 Swiftown
7	8		7 Montgomery
8			8 Cruger

ADJOINING 7.5' QUADRANGLE NAMES

THIS MAP COMPLIES WITH NATIONAL MAP ACCURACY STANDARDS
FOR SALE BY U.S. GEOLOGICAL SURVEY, RESTON, VIRGINIA 22092

ITTA BENA, MISSISSIPPI
PROVISIONAL EDITION 1983

3390-D3-TF-024



HISTORIC PRESERVATION
Ken P'Pool, director • Jim Woodrick, acting director
PO Box 571, Jackson, MS 39205-0571
601-576-6940 • Fax 601-576-6955
mdah.state.ms.us

April 9, 2009

Mr. Dallan C. Wordekemper
Federal Preservation Officer
CPM, Real Estate Specialist
Facilities
United States Postal Service
4301 Wilson Boulevard
Suite 300
Arlington, VA 22203-1861

Re: Itta Bena Historic District, Leflore County, Mississippi

Dear Mr. Wordekemper:

The Mississippi Historic Preservation Professional Review Board will consider the Itta Bena Historic District, Itta Bena Leflore County, Mississippi for nomination to the National Register of Historic Places at its meeting on May 21, 2009.

The Itta Bena Post Office located at 100 Dewey Street is in the boundaries of the historic district and is proposed as a noncontributing resource to the district. The Review Board welcomes your comments.

Sincerely,

A handwritten signature in black ink, appearing to read "William M. Gatlin".

William M. Gatlin
National Register Coordinator



HISTORIC PRESERVATION
Ken P'Pool, director • Jim Woodrick, acting director
PO Box 571, Jackson, MS 39205-0571
601-576-6940 • Fax 601-576-6955
mdah.state.ms.us



August 19, 2009

Dr. Janet Snyder Matthews
Keeper of the National Register of Historic Places and Associate Director for Cultural Resources
National Park Service
1201 Eye Street, NW (2280)
Washington, D.C. 2005

Dear Dr. Matthews:

We are pleased to enclose the nomination form and supporting documents to nominate the following property to the National Register of Historic Places:

Itta Bena Historic District, Leflore County, Mississippi

The properties were approved for nomination by the Mississippi Historic Preservation Professional Review Board at its meeting on May 21, 2009.

We trust you will find the enclosed materials in order and will let us hear from you at your convenience.

Sincerely,

A handwritten signature in black ink, appearing to read "Ken P'Pool".

Kenneth H. P'Pool

Deputy State Historic Preservation Officer

By: William M. Gatlin

National Register Coordinator