



WASHINGTON HOTEL

Penal

P

ONE WAY

1. The Hotel Senator
2. Sacramento, California
3. Edwin S. Astone
4. November 17, 1978
5. 928 Second Street, Sacramento, California 95814
6. Overall view of building looking in a northwesterly direction
7. Photo No. 1

*SACRAMENTO Ca*

FEB 26 1979

MAY 30 1979



1. The Hotel Senator
2. Sacramento, California

SACRAMENTO Co.

FEB 26 1979

3. Edwin S. Astone
4. November 17, 1978
5. 928 Second Street, Sacramento, California 95814
6. Overall view from Capitol Park looking in a northeasterly direction
7. Photo No. 2

MAY 30 1979



1. The Hotel Senator
2. Sacramento, California

SACRAMENTO Co

FEB 26 1979

3. Edwin S. Astone
4. November 17, 1978
5. 928 Second Street, Sacramento, California 95814
6. View of a portion of the east elevation showing setback of upper floors of building from original portico section. Photo taken in the westerly direction.
7. Photo No. 3

MAY 30 1979



SACRAMENTO Co.

- 1. The Hotel Senator
- 2. Sacramento, California

FEB 26 1979

- 3. Edwin S. Astone
- 4. November 17, 1978

5. 928 Second Street, Sacramento, California 95814

6. Detail view of column which forms the original portico showing how the portico was enclosed without disrupting the original exterior historic fabric. Photo taken in a northerly direction.

7. Photo No. 4

MAY 30 1979





1. The Hotel Senator
2. Sacramento, California

SACRAMENTO Co.

3. Edwin S. Astone

FEB 26 1979

4. November 17, 1978

5. 928 Second Street, Sacramento, California 95814

6. View of the rear (north) elevation along alley.  
Photo taken in a southwesterly direction.

7. Photo No. 5

MAY 30 1979



SACRAMENTO County

1. The Hotel Senator
2. Sacramento, California
3. Edwin S. Astone
4. November 17, 1978
5. 928 Second Street, Sacramento, California 95814
6. View of roof appendage housing original skylight glass (exterior and interior layers)
7. Photo No. 6

FEB 26 1979

MAY 30 1979



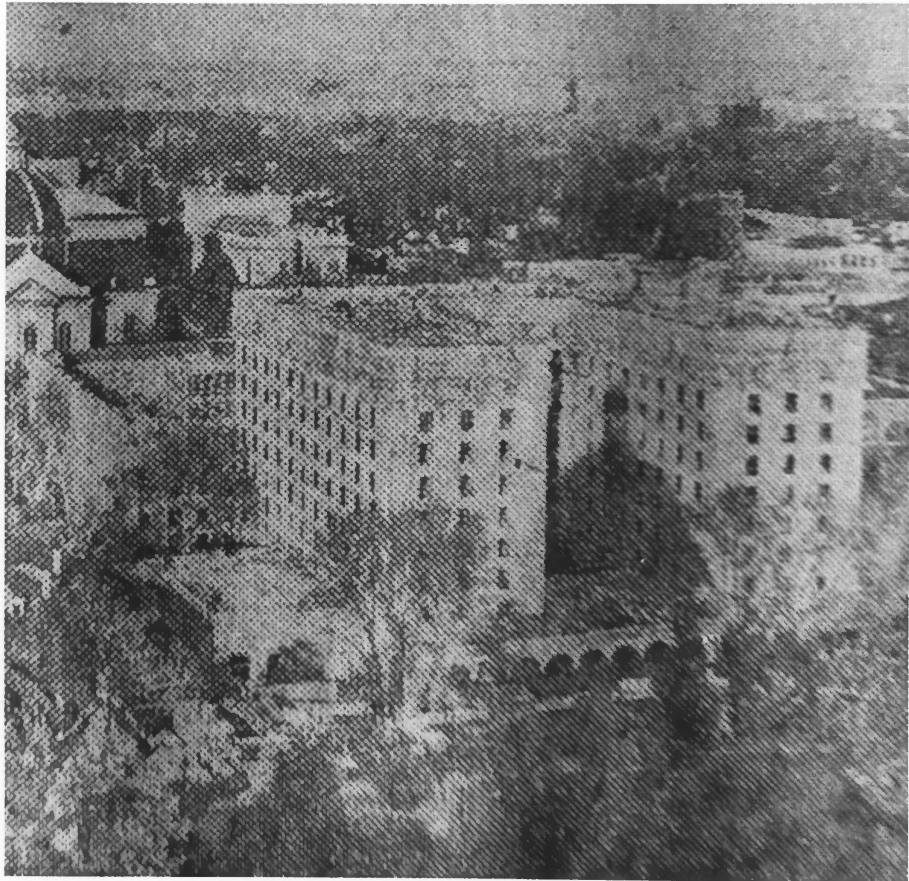
1. The Hotel Senator
2. Sacramento, California
3. Edwin S. Astone

SACRAMENTO  
COUNTY

FEB 26 1979

4. November 17, 1978
5. 928 Second Street, Sacramento, California 95814
6. View of interior substructure of skylight appendage on roof with exterior wire glass still intact at top. Interior glass was installed below this structural element.
7. Photo No. 7

MAY 30 1979



1. The Hotel Senator
2. Sacramento, California
3. Edwin S. Astone
4. November 17, 1978

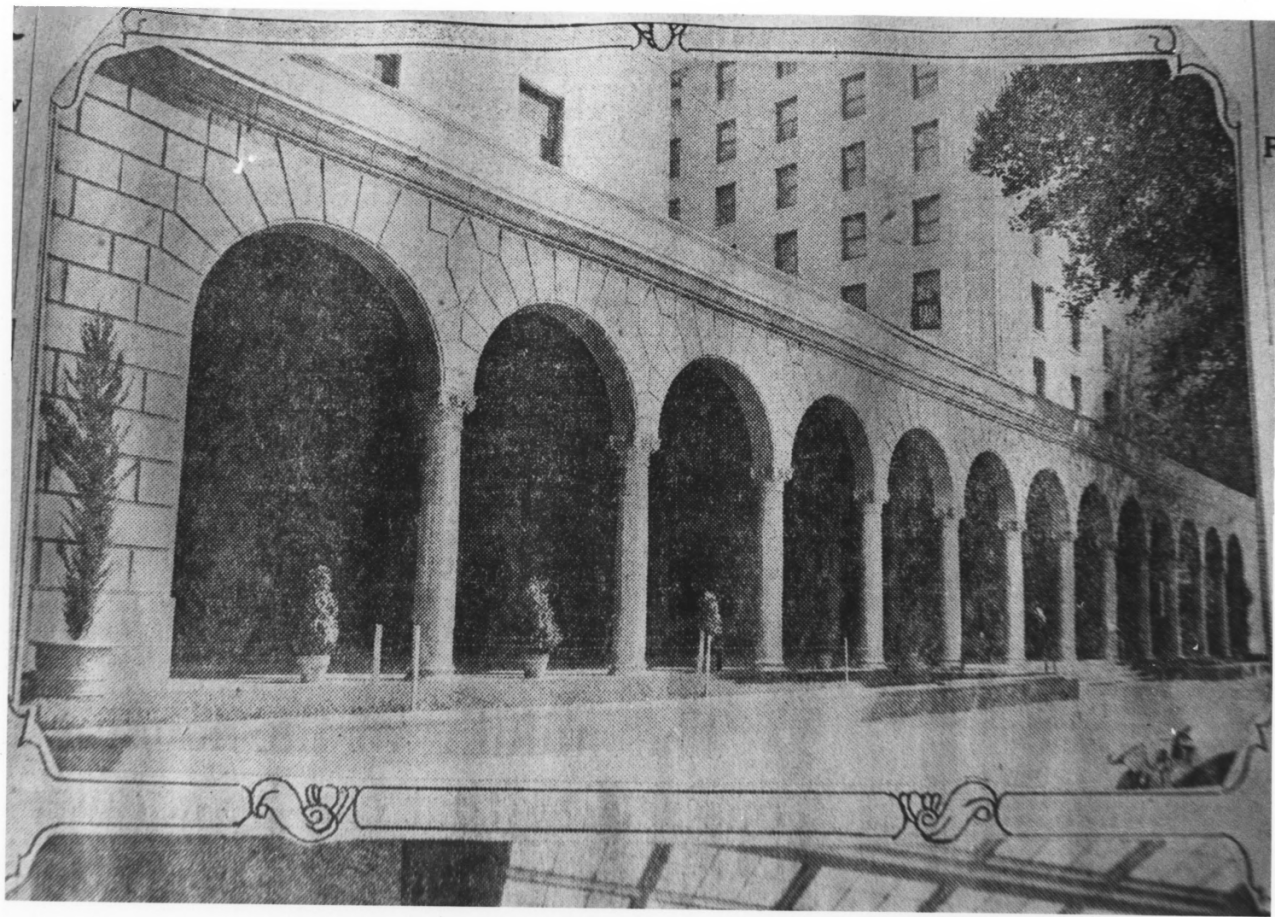
SACRAMENTO  
COUNTY

FEB 26 1979

5. 928 2nd Street, Sacramento, California
6. View of building from State Capitol Dome at grand opening, August 27, 1923. Photo taken of Special Section of Sacramento Bee commemorating the hotel's grand opening.
7. Photo No. 8

MAY 30 1979





1. The Hotel Senator
2. Sacramento, California

SACRAMENTO  
COUNTY

3. Edwin S. Astone

FEB 26 1979

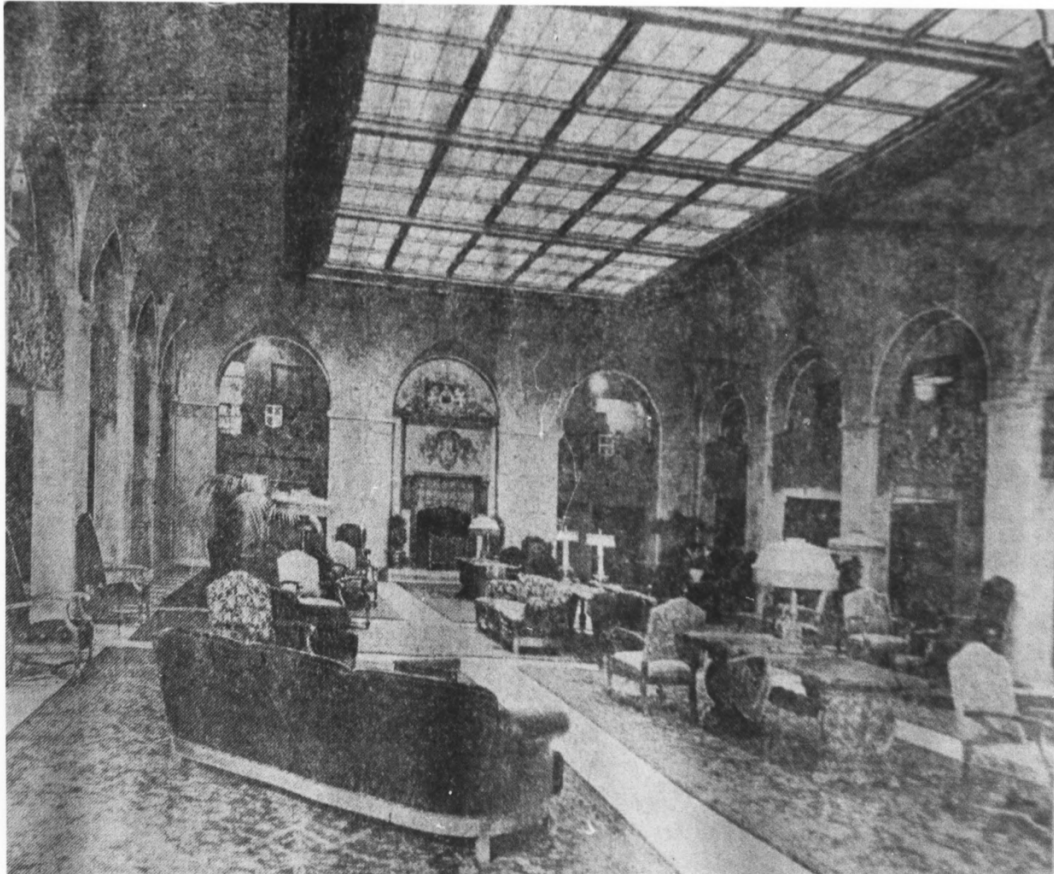
4. November 17, 1978

5. 928 2nd Street, Sacramento, California

6. View of protico along the L Street frontage. Photo taken of Special Section of Sacramento Bee; August 21, 1923, commemorating the hotel's grand opening.

Photo No. 9

MAY 30 1979



1. The Hotel Senator
2. Sacramento, California

SACRAMENTO  
COUNTY

3. Edwin S. Astone

**FEB 26 1979**

4. November 17, 1978

5. 928 2nd Street, Sacramento, California

6. View of original lobby looking in a northerly direction. Photo taken of Special Section of Sacramento Bee, August 21, 1923, commemorating the hotel's grand opening

7. Photo No. 10

MAY 30 1979