



SACRAMENTO ST

NATIONAL REGISTER OF HISTORIC PLACES  
PROPERTY PHOTOGRAPH FORM

(Type all entries - attach to or enclose with photograph)

STATE CALIF	
COUNTY PLACER	
FOR NPS USE ONLY	
ENTRY NUMBER 70.12.06.0004	DATE 12/31/70

1. NAME

COMMON: Chinese Joss House

AND/OR HISTORIC:

2. LOCATION

STREET AND NUMBER:  
SE corner of Sacramento Street and Spring Street

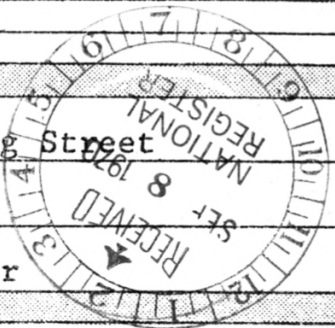
CITY OR TOWN:  
Auburn,

STATE: California

CODE: 45607

COUNTY: Placer

CODE: 45607



3. PHOTO REFERENCE

PHOTO CREDIT: Harry P. Bolton, Placer County Farm Advisor

DATE OF PHOTO: 7/9/70

NEGATIVE FILED AT:  
Placer County Farm Advisor's Office, Auburn, Calif.

4. IDENTIFICATION

DESCRIBE VIEW, DIRECTION, ETC.  
Front of building viewing South from across Sacramento Street.

SEE INSTRUCTIONS



NATIONAL REGISTER OF HISTORIC PLACES  
PROPERTY PHOTOGRAPH FORM

(Type all entries - attach to or enclose with photograph)

CALIF  
COUNTY  
PLACER  
FOR NPS USE ONLY  
ENTRY NUMBER  
DATE

70-12-06-0004 12/29/70

SEE INSTRUCTIONS

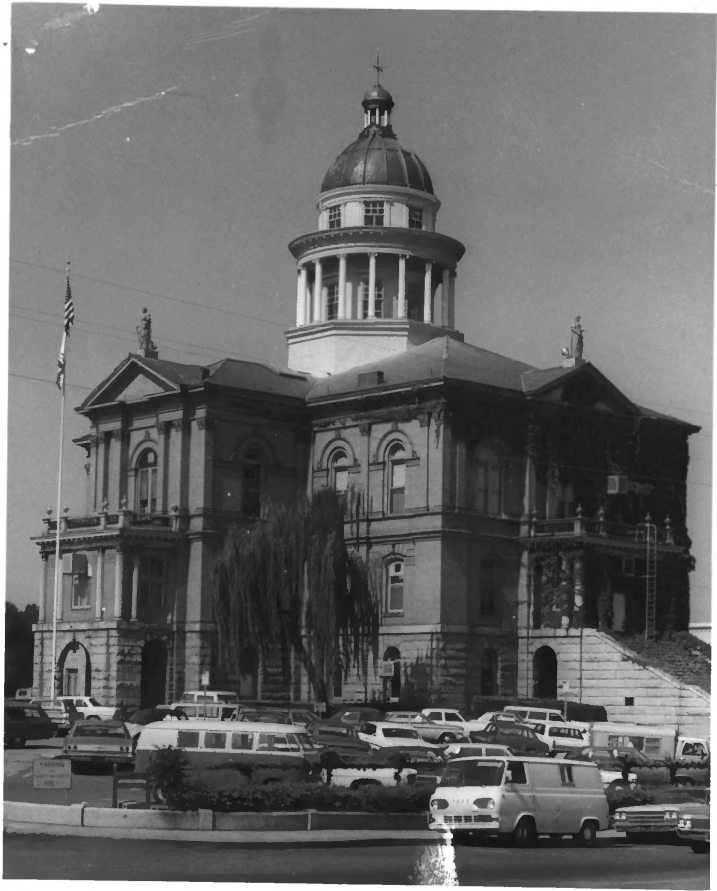
1. NAME  
COMMON: Travellers' Rest and Winery  
AND/OR HISTORIC:

2. LOCATION  
STREET AND NUMBER:  
Sacramento Street  
CITY OR TOWN:  
Auburn,  
STATE: California  
CODE: 06 COUNTY: Placer  
CODE: 06



3. PHOTO REFERENCE  
PHOTO CREDIT: Harry P. Bolton, Placer County Farm Advisor  
DATE OF PHOTO: 7/9/70  
NEGATIVE FILED AT:  
Placer County Farm Advisor's Office, Auburn, Calif.

4. IDENTIFICATION  
DESCRIBE VIEW, DIRECTION, ETC.  
Two story residence on right and wine cellar on left. Taken from vacant lot viewing north.



NATIONAL PARK SERVICE

NATIONAL REGISTER OF HISTORIC PLACES

PROPERTY PHOTOGRAPH FORM

(Type all entries - attach to or enclose with photograph)

CALIF.

COUNTY  
PLACER

FOR NPS USE ONLY

ENTRY NUMBER	DATE
70.12.06.0004	12/29/70

SEE INSTRUCTIONS

1. NAME

COMMON: Placer County Courthouse

AND/OR HISTORIC:

2. LOCATION

STREET AND NUMBER:

Maple Street and Lincoln Way

CITY OR TOWN:

Auburn

STATE:

California

CODE

06

COUNTY:

Placer

CODE

06



3. PHOTO REFERENCE

PHOTO CREDIT: Harry P. Bolton, Placer County Farm Advisor

DATE OF PHOTO: 7/9/70

NEGATIVE FILED AT:

Placer County Farm Advisor's Office

4. IDENTIFICATION

DESCRIBE VIEW, DIRECTION, ETC.

Courthouse viewed from intersection of Lincoln Way and Maple Street viewing southwest.





UNITED STATES DEPARTMENT OF THE INTERIOR  
NATIONAL PARK SERVICE

NATIONAL REGISTER OF HISTORIC PLACES  
PROPERTY PHOTOGRAPH FORM

(Type all entries - attach to or enclose with photograph)

STATE CALIF.	
COUNTY PLACER	
FOR NPS USE ONLY	
ENTRY NUMBER 70.12.06.0004	DATE 12/29/70

1. NAME

COMMON: U. S. Post Office

AND/OR HISTORIC:

2. LOCATION

STREET AND NUMBER:

SW corner of Sacramento and Lincoln Way

CITY OR TOWN:

Auburn,

STATE:

California

CODE

COUNTY:

Placer

CODE

061

3. PHOTO REFERENCE

PHOTO CREDIT: Harry P. Bolton, Placer County Farm Advisor

DATE OF PHOTO: 7/9/70

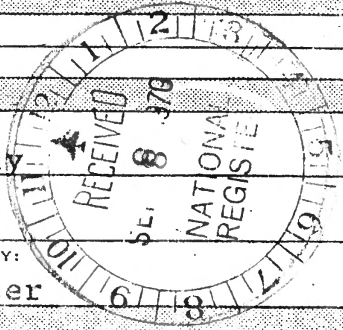
NEGATIVE FILED AT:

Placer County Farm Advisor's Office, Auburn, Calif.

4. IDENTIFICATION

DESCRIBE VIEW, DIRECTION, ETC.

Viewing west down Sacramento Street. Post Office appears as the white building in the center of the photograph with the shake sidewalk canopy around the northwest and northeast sides.



SEE INSTRUCTIONS





HOME INTERIORS

PLACE COUNTY  
CHAMBER OF  
COMMERCE  
FEDERAL  
RESERVE BANK

HOME INTERIORS

HOME INTERIORS

ONE WAY

REARVIEW MIRROR

NATIONAL REGISTER OF HISTORIC PLACES  
PROPERTY PHOTOGRAPH FORM

(Type all entries - attach to or enclose with photograph)

COUNTY

FOR NPS USE ONLY

ENTRY NUMBER

DATE

70-12-06-0004 12/29/70

1. NAME

COMMON: Commercial Street

AND/OR HISTORIC:

2. LOCATION

STREET AND NUMBER:

CITY OR TOWN:

Auburn,

STATE:

California

CODE

06

COUNTY:

Placer

CODE

061

3. PHOTO REFERENCE

PHOTO CREDIT: Harry P. Bolton, Placer County Farm Advisor

DATE OF PHOTO: 7/9/70

NEGATIVE FILED AT:

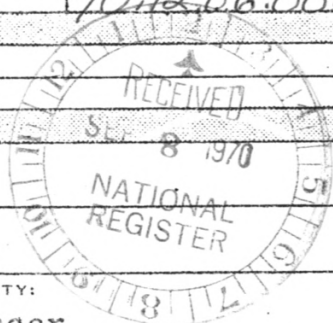
Placer County Farm Advisor's Office, Auburn, Calif.

4. IDENTIFICATION

DESCRIBE VIEW, DIRECTION, ETC.

Viewing storefronts on east side of street from the top of the hill at the end of Commercial Street.

SEE INSTRUCTIONS





NATIONAL REGISTER OF HISTORIC PLACES  
PROPERTY PHOTOGRAPH FORM

(Type all entries - attach to or enclose with photograph)

COUNTY

FOR NPS USE ONLY

ENTRY NUMBER

DATE

40.12.06 0004 12/29/70

1. NAME

COMMON: Lawyers Row

AND/OR HISTORIC:

2. LOCATION

STREET AND NUMBER:

Commercial Street

CITY OR TOWN:

Auburn,

STATE:

California

CODE

COUNTY:

06

Placer

CODE

061

3. PHOTO REFERENCE

PHOTO CREDIT: Harry P. Bolton, Placer County Farm Advisor

DATE OF PHOTO: 7/9/70

NEGATIVE FILED AT:

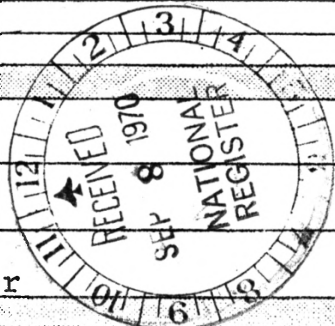
Placer County Farm Advisor's Office, Auburn, Calif.

4. IDENTIFICATION

DESCRIBE VIEW, DIRECTION, ETC.

Law Office Building in front view being viewed east from  
across Commercial Street.

SEE INSTRUCTIONS







UNITED STATES DEPARTMENT OF THE INTERIOR  
NATIONAL PARK SERVICE

NATIONAL REGISTER OF HISTORIC PLACES

PROPERTY PHOTOGRAPH FORM

(Type all entries - attach to or enclose with photograph)

STATE CALIF.	
COUNTY PLACER	
FOR NPS USE ONLY	
ENTRY NUMBER 10.12.D6.0004	DATE 12/29/70

1. NAME

COMMON: **Historic Old Auburn**

AND/OR HISTORIC: **North Fork Diggings; Woods Dry Diggings**

2. LOCATION

STREET AND NUMBER:

CITY OR TOWN:

**Auburn,**

STATE:

**California**

CODE

COUNTY:

**Placer**

CODE

3. PHOTO REFERENCE

PHOTO CREDIT: **Harry P. Bolton, Placer County Farm Advisory**

DATE OF PHOTO: **7/9/70**

NEGATIVE FILED AT:

**Placer County Farm Advisor's Office**

4. IDENTIFICATION

DESCRIBE VIEW, DIRECTION, ETC.

Courthouse at left, Commercial Street and Lawyer's Row in center, Old Firehouse on right. Viewing east from top of Prospect Hill and across Interstate 80 freeway.



SEE INSTRUCTIONS







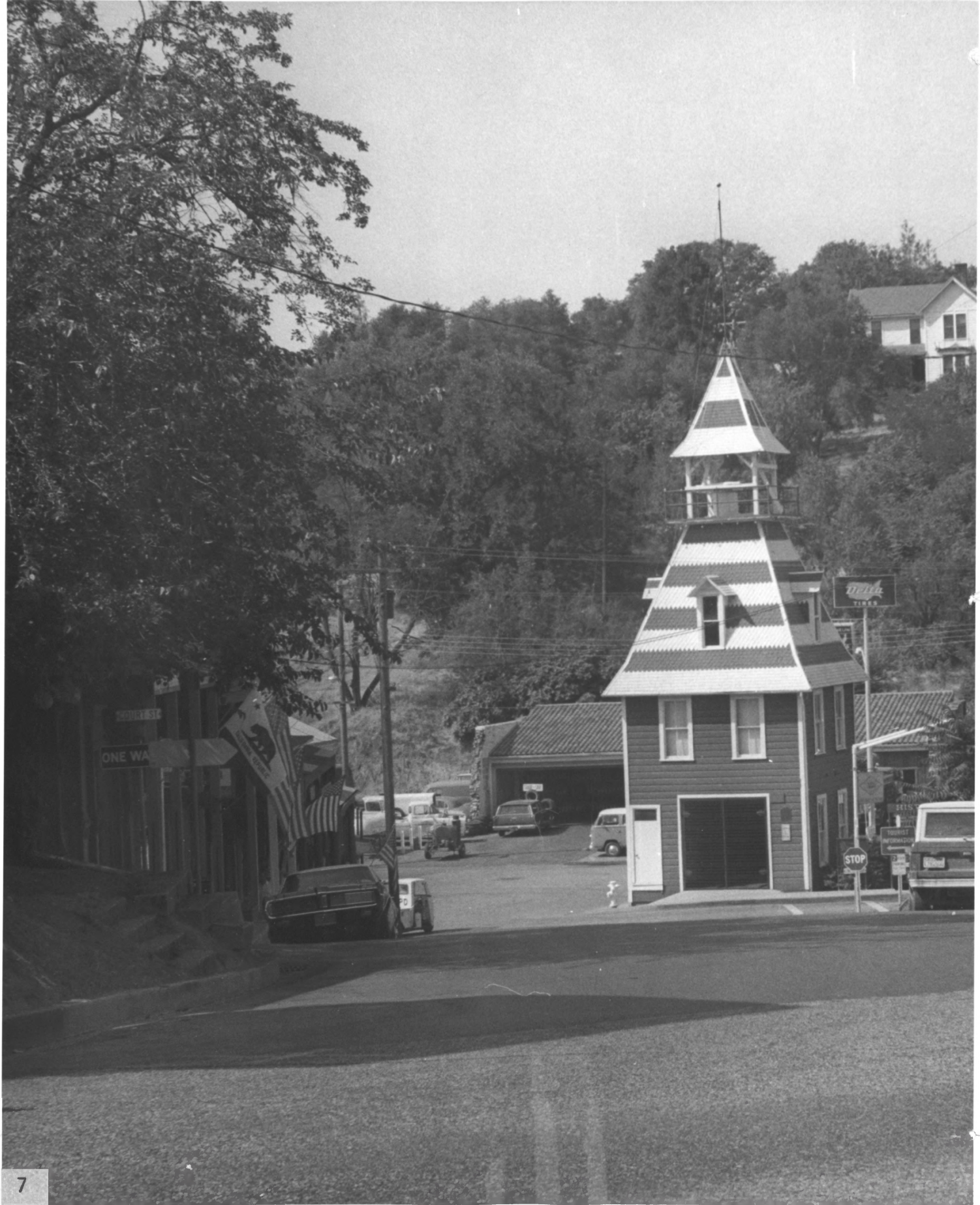








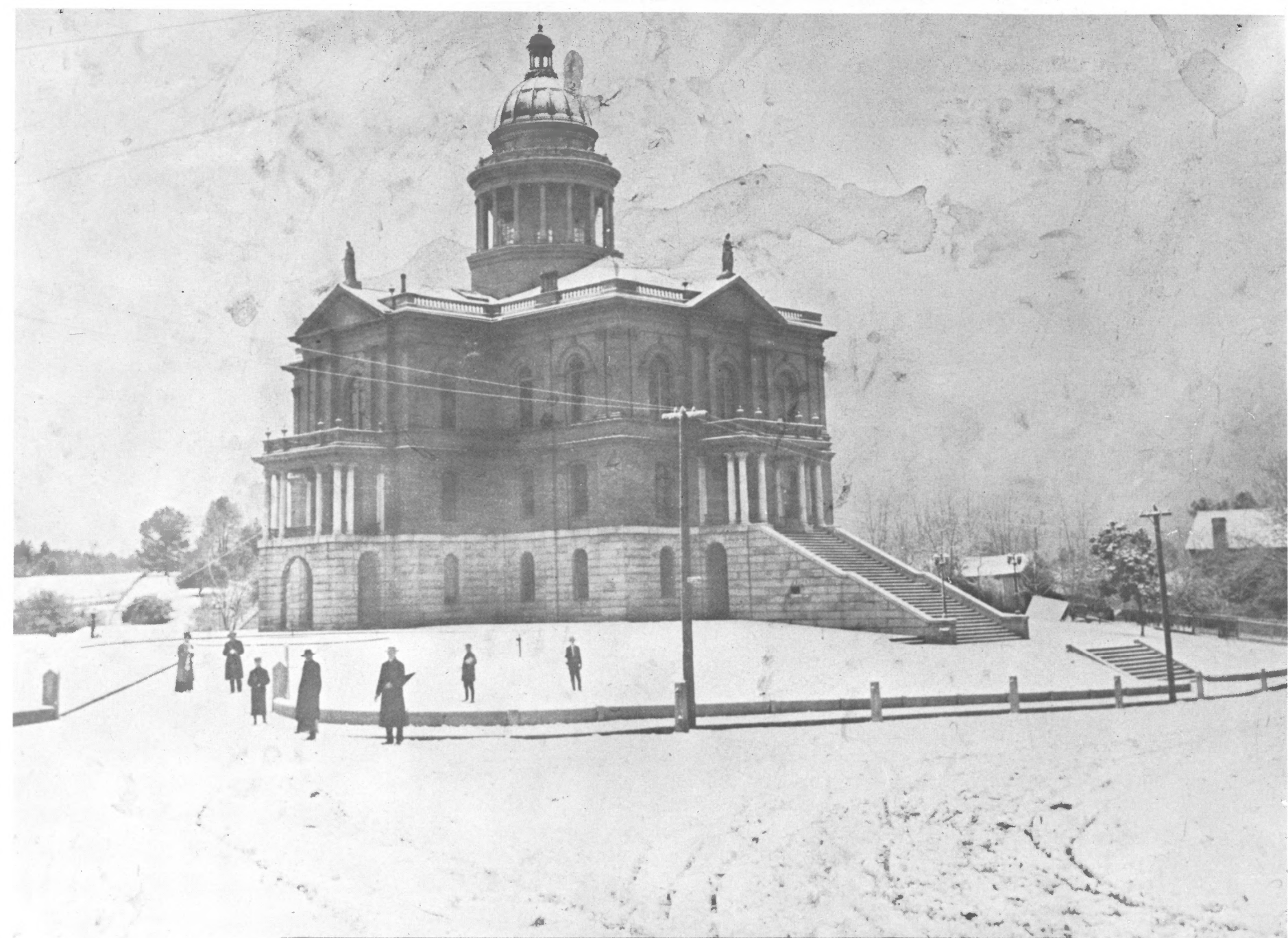












Winter of 1910-1911

Third court house built on  
this knoll.

Cornerstone laid July 4, 1894-Dedicated July 4, 1898.



**OLD AUBURN**

**Auburn, California**

This is the remains of Old Auburn, where gold was discovered in Auburn Ravine during the Gold Rush days.

Color by Fred Shorthill

PLACE  
STAMP  
HERE

*Post Card*

Pub. by Fritz Vibe Postcard Service, 2741 Lerwick Rd., Sacramento 21, Calif.





PLACER COUNTY COURT HOUSE  
AUBURN, CALIFORNIA

The arcaded dome of this historic old court house in the Mother Lode, looks down from its hilltop perch into Auburn Ravine where gold was panned a century ago.

NATURAL COLOR  
by  
*Mike Roberts*  
BERKELEY 2, CALIF.

Pub. and Dist. by Pioneer News Co., Inc., 221 W Ivy St., Roseville, Cal.

