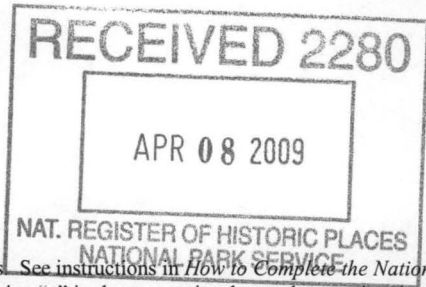


United States Department of the Interior
National Park Service

National Register of Historic Places
Registration Form

316



This form is for use in nominating or requesting determinations for individual properties and districts. See instructions in *How to Complete the National Register of Historic Places Registration Form* (National Register Bulletin 16A). Complete each item by marking "x" in the appropriate box or by entering the information requested. If an item does not apply to the property being documented, enter "N/A" for "not applicable." For functions, architectural classification, materials, and areas of significance, enter only categories and subcategories from the instructions. Place additional entries and narrative items on continuation sheets (NPS Form 10-900a). Use a typewriter, word processor, or computer, to complete all items.

1. Name of Property

historic name Highway B-1 Little Telico Creek Bridge

other names/site number Site #SF0093, Bridge #19489

2. Location

street & number SFC 213 Road over Little Telico Creek

☐ not for publication

city or town Caldwell

☐ vicinity

state Arkansas code AR county St. Francis code 123 zip code 72322

3. State/Federal Agency Certification

As the designated authority under the National Historic Preservation Act, as amended, I hereby certify that this ☒ nomination ☐ request for determination of eligibility meets the documentation standards for registering properties in the National Register of Historic Places and meets the procedural and professional requirements set for in 36 CFR Part 60. In my opinion, the property ☒ meets ☐ does not meet the National Register criteria. I recommend that this property be considered significant ☐ nationally ☐ statewide ☒ locally. (See continuation sheet for additional comments.)

Cathy Matthews
Signature of certifying official/Title

3/17/09
Date

Arkansas Historic Preservation Program
State or Federal agency and bureau

In my opinion, the property ☐ meets ☐ does not meet the National Register criteria. (☐ See Continuation sheet for additional comments.)

Signature of certifying official/Title

Date

State or Federal agency and bureau

4. National Park Service Certification

- I hereby certify that the property is:
- ☒ entered in the National Register.
 - ☐ See continuation sheet
 - ☐ determined eligible for the National Register.
 - ☐ See continuation sheet
 - ☐ determined not eligible for the National Register.
 - ☐ removed from the National Register.
 - ☐ other, (explain:) _____

Edson H. Beall
Signature of the Keeper

5-20-09
Date of Action

Highway B-1 Little Telico Creek Bridge

Name of Property

St. Francis County, Arkansas

County and State

5. Classification

Ownership of Property

(Check as many boxes as apply)

- ☐ private
☒ public-local
☐ public-State
☐ public-Federal

Category of Property

(Check only one box)

- ☐ building(s)
☐ district
☐ site
☒ structure
☐ object

Number of Resources within Property

(Do not include previously listed resources in count.)

Contributing

Noncontributing

	buildings
	sites
1	structures
	objects
1	Total

Name of related multiple property listing

(Enter "N/A" if property is not part of a multiple property listing.)

Historic Bridges of Arkansas

Number of Contributing resources previously listed in the National Register

6. Function or Use

Historic Functions

(Enter categories from instructions)

TRANSPORTATION/road-related(vehicular)

Current Functions

(Enter categories from instructions)

TRANSPORTATION/road-related(vehicular)

7. Description

Architectural Classification

(Enter categories from instructions)

OTHER

Materials

(Enter categories from instructions)

foundation CONCRETE

walls N/A

roof N/A

other CONCRETE

Narrative Description

(Describe the historic and current condition of the property on one or more continuation sheets.)

National Register of Historic Places Continuation Sheet

Name of Property: Highway B-1 Little Telico Creek Bridge

County and State: St. Francis County, Arkansas

Name of multiple property listing (if applicable): Historic Bridges of Arkansas

Section number 7 Page 1

SUMMARY

The Highway B-1 Little Telico Creek Bridge spans Little Telico Creek on the southern edge of Caldwell in rural St. Francis County, Arkansas. The bridge was built c.1918 as part of an effort to develop roads radiating out from Forrest City, the county seat of St. Francis County. The three-span bridge is constructed of reinforced concrete and also has a decorative concrete guardrail.

ELABORATION

The Highway B-1 Little Telico Creek Bridge spans Little Telico Creek on the southern edge of Caldwell in rural St. Francis County, Arkansas. The route of Highway B-1, which later became AR 1, runs south from Caldwell basically parallel to the railroad line. The area of the bridge is surrounded mainly by agricultural fields and scattered homes.

The bridge was built c.1918 as part of an effort to develop roads radiating out from Forrest City, the county seat of St. Francis County. The three-span bridge is constructed of reinforced concrete and also has a decorative concrete guardrail.

Highway B-1 Little Telico Creek Bridge

The Little Telico Creek Bridge is a three-span bridge that is approximately 80 feet long and 19 feet wide. All three spans of the bridge are reinforced concrete spans. The bridge's deck is also constructed out of concrete and has a continuous concrete curb on each side.

The guardrails on the concrete spans are also constructed out of reinforced concrete. The bridge's end span's guardrails are comprised of one panel, while the center span has two panels. Each panel has an incised rectangle on the side. There are also angled panels at each end of the bridge. Each guardrail is also topped by a projecting cap.

Integrity

The Highway B-1 Little Telico Creek Bridge retains excellent integrity and is unaltered from the time of its construction in c.1918. The bridge still exhibits its original construction and still possesses many of its decorative characteristics.

The setting around the bridge also reflects its period of significance. Caldwell remains a small town, and the area in the immediate vicinity of the bridge is still an agricultural area and small town as it was during the 1910s when it was built. Although rarely used since it is on a bypassed road, the bridge is still open to vehicular traffic.

Highway B-1 Little Telico Creek Bridge
Name of Property

St. Francis County, Arkansas
County and State

8. Statement of Significance

Applicable National Register Criteria

(Mark "x" in one or more boxes for the criteria qualifying the property for National Register listing.)

- ☒ **A** Property is associated with events that have made a significant contribution to the broad patterns of our history.
- ☐ **B** Property is associated with the lives of persons significant in our past.
- ☒ **C** Property embodies the distinctive characteristics of a type, period, or method of construction or represents the work of a master, or possesses high artistic values, or represents a significant and distinguishable entity whose components lack individual distinction.
- ☐ **D** Property has yielded, or is likely to yield, information important in prehistory or history.

Criteria Considerations

(Mark "x" in all the boxes that apply.)

Property is:

- ☐ **A** owned by a religious institution or used for religious purposes.
- ☐ **B.** removed from its original location.
- ☐ **C.** birthplace or grave of a historical figure of outstanding importance.
- ☐ **D** a cemetery.
- ☐ **E** a reconstructed building, object, or structure.
- ☐ **F** a commemorative property
- ☐ **G** less than 50 years of age or achieved significance within the past 50 years.

Levels of Significance (local, state, national)

Local

Areas of Significance (Enter categories from instructions)

Engineering

Transportation

Period of Significance

c.1918-1959

Significant Dates

c.1918

Significant Person (Complete if Criterion B is marked)

Cultural Affiliation (Complete if Criterion D is marked)

Architect/Builder

Narrative Statement of Significance

(Explain the significance of the property on one or more continuation sheets.)

9. Major Bibliographical References

Bibliography

(Cite the books, articles, and other sources used in preparing this form on one or more continuation sheets.)

Previous documentation on file (NPS):

- ☐ preliminary determination of individual listing (36 CFR 67) has been requested
- ☐ previously listed in the National Register
- ☐ Previously determined eligible by the National Register
- ☐ designated a National Historic Landmark
- ☐ recorded by Historic American Buildings Survey # _____
- ☐ recorded by Historic American Engineering Record # _____

Primary location of additional data:

- ☒ State Historic Preservation Office
- ☐ Other State Agency
- ☐ Federal Agency
- ☐ Local Government
- ☐ University
- ☐ Other

Name of repository: _____

National Register of Historic Places Continuation Sheet

Name of Property: Highway B-1 Little Telico Creek Bridge

County and State: St. Francis County, Arkansas

Name of multiple property listing (if applicable): Historic Bridges of Arkansas

Section number 8 Page 1

SUMMARY

The Highway B-1 Little Telico Creek Bridge is being nominated to the National Register of Historic Places under **Criterion A** with **local significance** for its association with the development of highway infrastructure in St. Francis County during the 1910s. The Highway B-1 Little Telico Creek Bridge, which was built c.1918, was part of early efforts to develop a road network radiating from Forrest City, the county seat. It illustrates the importance of providing good infrastructure for automobiles, something that was sometimes difficult in the swampy areas of Eastern Arkansas. The bridge continued to be used as part of Highway B-1 (later AR 1) until the current AR 1 was constructed in 1964. (Because the bridge's use from 1959 through 1964 does not meet Criteria Consideration G, the period of significance is being cut off at 1959.)

The Highway B-1 Little Telico Creek Bridge is also being nominated to the National Register of Historic Places under **Criterion C** with **local significance** as a good example of early twentieth-century bridge-building technology. The Highway B-1 Little Telico Creek Bridge illustrates early reinforced concrete bridge design. The decorative detailing and delicate proportions illustrate the small amount of traffic that the bridge needed to handle along with the limited knowledge of concrete bridge construction available at that time.

The Highway B-1 Little Telico Creek Bridge nomination is being submitted under the multiple property listing "Historic Bridges of Arkansas" and under associated historic context "Early Transportation Era."

ELABORATION

European settlement began in the area that would become St. Francis County in the first part of the 1800s. The first permanent settlers came from Tennessee and Kentucky and arrived in the area about 1819. Although other sporadic settlers migrated to the area in the 1820s and early 1830s, settlement was limited in the area until the opening of the military road in 1836.¹

Even though settlement was sporadic prior to 1836, there were enough people living in the area to warrant the creation of St. Francis County on October 13, 1827. At the time, however, the county encompassed a much larger area than it does now. The county seat was initially established at William Strong's house on the military road, approximately twelve miles north of Forrest City. However, the county seat was moved to Madison in 1841, then moved to Mt. Vernon in 1855, moved back to Madison shortly afterwards before ending up in Forrest City in 1874.²

By 1872, a railroad line was in the planning stages that would cross St. Francis County north to south and intersect the Memphis & Little Rock Railroad, but it was not until the mid-1880s that it was built. As in

¹ *Biographical and Historical Memoirs of Eastern Arkansas*. Chicago: Goodspeed Publishing Co., 1890, p. 452.

² *Ibid*, p. 455.

National Register of Historic Places Continuation Sheet

Name of Property: Highway B-1 Little Telico Creek Bridge

County and State: St. Francis County, Arkansas

Name of multiple property listing (if applicable): Historic Bridges of Arkansas

Section number 8 Page 2

many other parts of Arkansas, settlement in the Caldwell area was spurred greatly by the arrival of the railroad. By 1887, Caldwell was large enough to have a post office, and the town was named for Thomas B. Caldwell, the postmaster. The community appeared on railroad maps by 1895. Caldwell started out as a small community that served the surrounding agricultural area, a role it still plays today as the location of a cotton gin.³

As communities such as Caldwell developed in St. Francis County, it was necessary to develop a road network to connect them, especially as the automobile became more popular in the early 1900s. By 1918, work was well underway to connect Forrest City with other parts of the county. The *Third Biennial Report of the Department of State Lands, Highways and Improvements* reported:

The county convicts have been used on the road in St. Francis County under an experienced road builder, and nearly all the main roads have been put in very good condition. Gravel is abundant along Crowley's Ridge for permanent road building.

The streams are well bridged and the road sentiment is good.

Great activity prevails in road building in this county. Plans, specifications and estimates have been furnished for a native gravel road, 56.22 miles long, from Forrest City, North, East and West. Estimated cost, \$252,059.50. State aid allotted, \$20,000.

Work is now progressing on this road and will soon be completed. The gravel is being obtained from Crowley's Ridge near by. When completed this will give St. Francis County a good system of roads.⁴

The road north from Forrest City encompassed Highway B-1 through the Caldwell area and would have included the Little Telico Creek Bridge.

At about the time that the Little Telico Creek Bridge was built, the State Highway Department had begun to develop standard bridge plans for use across the state, and they had also developed an awareness of the need for stronger bridges to carry heavier loads. The *Fourth Biennial Report* stated:

³ Baker, Russell Pierce. *From Memdag to Norsk: A Historical Directory of Arkansas Post Offices, 1832-1971*. Hot Springs, AR: Arkansas Genealogical Society, 1988, p. 35, *Cram's Township and Rail Road Map of Arkansas*. Map. Chicago: George Franklin Cram, 1895, and *Maps showing Arkansas Central, the Helena & Corinth, and the Pine Bluff & Southwestern Railroads together forming the Texas & Northeastern Railway*. Map. New York: G.W. & C. B. Colton & Co., 1872.

⁴ *Third Biennial Report of the Department of State Lands, Highways and Improvements*. Publisher unknown, c.1918, p. 83.

National Register of Historic Places Continuation Sheet

Name of Property: Highway B-1 Little Telico Creek Bridge

County and State: St. Francis County, Arkansas

Name of multiple property listing (if applicable): Historic Bridges of Arkansas

Section number 8 Page 3

In order to have bridges and structures designed and built to meet present and future traffic and to comply with the Federal aid requirements, it has been necessary during the past two years to revise some of the old standard plans and to make many new plans.

Loads have increased to such an extent that the bridges and culverts upon all main roads must be designed to carry safely a load not less than that of a 10-ton truck, and in many cases a 15-ton truck, together with the impact caused by these heavy loads moving rapidly over the structures.⁵

Interestingly, though, all of the standard plans listed in the report that had been developed in the previous two years, with the exception of one timber bridge plan, were for metal trusses. Apparently, no concrete standard plans were in development during the late 1910s or early 1920s, although concrete bridges would become more prevalent in the late 1920s. As a result, it is unknown if this bridge was designed by the highway department or came from another source.⁶

The Little Telico Creek Bridge is a good reflection of 1910s concrete bridge building technology in Arkansas. Like several other bridges around the state, the bridge's guardrails employed diagonal panels at each end to help prevent cars and trucks from running into the creek. In addition, the guardrails employed decorative touches, including the incised rectangles and large caps running the length of the guardrails. The guardrails also employed relatively delicate proportions, reflecting the relatively small amount of traffic that the bridge would have been expected to handle.

Although the guardrails on the bridge have delicate proportions, the bridge still illustrates some relative unfamiliarity with the use of concrete for bridge construction. The deck, for example, is massively thick showing that the designers were still under the belief that more material meant more strength. In addition, the piers are solid concrete also illustrating this belief. This belief would continue to be illustrated in the bridges built in Arkansas up until the mid to late 1920s.

The Little Telico Creek Bridge represented an important link in the transportation network of St. Francis County and eastern Arkansas. By 1926, Highway B-1 had been redesignated Arkansas Highway 1, and it was an important highway linking the towns of eastern Arkansas. However, the amount of traffic that the road was receiving eventually led to its bypassing in 1964, and today it remains in use only for the few local residents who live on the road south of Caldwell. The bridge still remains an excellent and rare example of early reinforced concrete bridge-building technology in the Caldwell area.⁷

⁵ *Fourth Biennial Report of the Department of State Lands, Highways and Improvements*. Publisher unknown, c.1920, p. 131.

⁶ *Ibid.*

⁷ Scoggin, Robert. E-mail to the author. 5 January 2009.

National Register of Historic Places Continuation Sheet

Name of Property: Highway B-1 Little Telico Creek Bridge

County and State: St. Francis County, Arkansas

Name of multiple property listing (if applicable): Historic Bridges of Arkansas

Section number 8 Page 4

STATEMENT OF SIGNIFICANCE

The Highway B-1 Little Telico Creek Bridge is being nominated to the National Register of Historic Places under **Criterion A** with **local significance** for its association with the development of highway infrastructure in St. Francis County during the 1910s. The Highway B-1 Little Telico Creek Bridge, which was built c.1918, was part of early efforts to develop a road network radiating from Forrest City, the county seat. It illustrates the importance of providing good infrastructure for automobiles, something that was sometimes difficult in the swampy areas of Eastern Arkansas. The bridge continued to be used as part of Highway B-1 (later AR 1) until the current AR 1 was constructed in 1964. (Because the bridge's use from 1959 through 1964 does not meet Criteria Consideration G, the period of significance is being cut off at 1959.)

The Highway B-1 Little Telico Creek Bridge is also being nominated to the National Register of Historic Places under **Criterion C** with **local significance** as a good example of early twentieth-century bridge-building technology. The Highway B-1 Little Telico Creek Bridge illustrates early reinforced concrete bridge design. The decorative detailing and delicate proportions illustrate the small amount of traffic that the bridge needed to handle along with the limited knowledge of concrete bridge construction available at that time.

The Highway B-1 Little Telico Creek Bridge nomination is being submitted under the multiple property listing "Historic Bridges of Arkansas" and under associated historic context "Early Transportation Era."

United States Department of the Interior
National Park Service

National Register of Historic Places Continuation Sheet

Name of Property: Highway B-1 Little Telico Creek
Bridge

County and State: St. Francis County, Arkansas

Name of multiple property listing (if applicable): Historic
Bridges of Arkansas

Section number 9 Page 1

BIBLIOGRAPHY

Baker, Russell Pierce. *From Memdag to Norsk: A Historical Directory of Arkansas Post Offices, 1832-1971*. Hot Springs, AR: Arkansas Genealogical Society, 1988.

Biographical and Historical Memoirs of Eastern Arkansas. Chicago: Goodspeed Publishing Co., 1890.

Cram's Township and Rail Road Map of Arkansas. Map. Chicago: George Franklin Cram, 1895.

Fourth Biennial Report of the Department of State Lands, Highways and Improvements. Publisher unknown, c.1920.

Maps showing Arkansas Central, the Helena & Corinth, and the Pine Bluff & Southwestern Railroads together forming the Texas & Northeastern Railway. Map. New York: G.W. & C. B. Colton & Co., 1872.

Scoggin, Robert. E-mail to the author. 5 January 2009.

Third Biennial Report of the Department of State Lands, Highways and Improvements. Publisher unknown, c.1918.

West, Elliott. *The WPA Guide to 1930s Arkansas*. Lawrence, KS: University Press of Kansas, 1987 reprint of 1941 publication.

Highway B-1 Little Telico Creek Bridge

Name of Property

St. Francis County, Arkansas

County and State

10. Geographical Data

Acreage of Property Less than one.

UTM References

(Place additional UTM references on a continuation sheet.)

1 15 699155 3882528
Zone Easting Northing
2 _____

3 _____
Zone Easting Northing
4 _____

☐ See continuation sheet

Verbal Boundary Description

(Describe the boundaries of the property on a continuation sheet.)

Boundary Justification

(Explain why the boundaries were selected on a continuation sheet.)

11. Form Prepared By

name/title Ralph S. Wilcox, National Register & Survey Coordinator
organization Arkansas Historic Preservation Program date January 8, 2009
street & number 1500 Tower Building, 323 Center Street telephone (501) 324-9787
city or town Little Rock state AR zip code 72201

Additional Documentation

Submit the following items with the completed form:

Continuation Sheets

Maps

A **USGS map** (7.5 or 15 minute series) indicating the property's location

A **Sketch map** for historic districts and properties having large acreage or numerous resources.

Photographs

Representative **black and white photographs** of the property.

Additional items

(Check with the SHPO or FPO for any additional items.)

Property Owner

(Complete this item at the request of SHPO or FPO.)

name _____
street & number _____ telephone _____
city or town _____ state _____ zip code _____

Paperwork Reduction Act Statement: This information is being collected for applications to the National Register of Historic Places to nominate properties for listing or determine eligibility for listing, to list properties, and to amend existing listing. Response to this request is required to obtain a benefit in accordance with the National Historic Preservation Act, as amended (16 U.S.C. 470 *et seq.*)

Estimated Burden Statement: Public reporting burden for this form is estimated to average 18.1 hours per response including time for reviewing instructions, gathering and maintaining data, and completing and reviewing the form. Direct comments regarding this burden estimate or any aspect of this form to the Chief, Administrative Services Division, National Park Service, P. O. Box 37127, Washington, DC 20013-7127; and the Office of Management and Budget, Paperwork Reduction Projects (1024-0018), Washington, DC 20303.

United States Department of the Interior
National Park Service

National Register of Historic Places Continuation Sheet

Name of Property: Highway B-1 Little Telico Creek
Bridge

County and State: St. Francis County, Arkansas

Name of multiple property listing (if applicable): Historic
Bridges of Arkansas

Section number 10 Page 1

VERBAL BOUNDARY DESCRIPTION

Beginning at a point in the center of SFC 213 Road 20 feet northwest of the northwest end of the Highway B-1 Little Telico Creek Bridge, the boundary includes the area within 20 feet of each side of the centerline of SFC 213 Road to an ending point 20 feet southeast of the southeast end of the Little Telico Creek Bridge.

BOUNDARY JUSTIFICATION

This boundary includes the Highway B-1 Little Telico Creek Bridge and its immediate setting.

UNITED STATES DEPARTMENT OF THE INTERIOR
NATIONAL PARK SERVICE

NATIONAL REGISTER OF HISTORIC PLACES
EVALUATION/RETURN SHEET

REQUESTED ACTION: NOMINATION

PROPERTY Highway B-1, Little Telico Creek Bridge
NAME:

MULTIPLE Historic Bridges of Arkansas MPS
NAME:

STATE & COUNTY: ARKANSAS, St. Francis

DATE RECEIVED: 4/08/09 DATE OF PENDING LIST: 4/27/09
DATE OF 16TH DAY: 5/12/09 DATE OF 45TH DAY: 5/22/09
DATE OF WEEKLY LIST:

REFERENCE NUMBER: 09000316

REASONS FOR REVIEW:

APPEAL: N DATA PROBLEM: N LANDSCAPE: N LESS THAN 50 YEARS: N
OTHER: N PDIL: N PERIOD: N PROGRAM UNAPPROVED: N
REQUEST: N SAMPLE: N SLR DRAFT: N NATIONAL: N

COMMENT WAIVER: N

☒ ACCEPT ☐ RETURN ☐ REJECT 5-20-09 DATE

ABSTRACT/SUMMARY COMMENTS:

Entered in
The National Register
of
Historic Places

RECOM./CRITERIA _____

REVIEWER _____ DISCIPLINE _____

TELEPHONE _____ DATE _____

DOCUMENTATION see attached comments Y/N see attached SLR Y/N

If a nomination is returned to the nominating authority, the nomination is no longer under consideration by the NPS.



HIGHWAY B-1 LITTLE TELICO CREEK BRIDGE

ST. FRANCIS COUNTY, ARKANSAS

RALPH S. WILCOX

DECEMBER 2008

ARKANSAS HISTORIC PRESERVATION PROGRAM, LITTLE ROCK, AR

GUARDRAIL DETAIL, LOOKING SOUTHEAST



HIGHWAY B-1 LITTLE TELICO CREEK BRIDGE

ST. FRANCIS COUNTY, ARKANSAS

RALPH S. WILCOX

DECEMBER 2008

ARKANSAS HISTORIC PRESERVATION PROGRAM, LITTLE ROCK, AR

VIEW OF THE BRIDGE LOOKING SOUTHEAST



HIGHWAY B-1 LITTLE TELICO CREEK BRIDGE

ST. FRANCIS COUNTY, ARKANSAS

RALPH S. WILCOX

DECEMBER 2008

ARKANSAS HISTORIC PRESERVATION PROGRAM, LITTLE ROCK, AR
VIEW OF THE BRIDGE LOOKING SOUTH



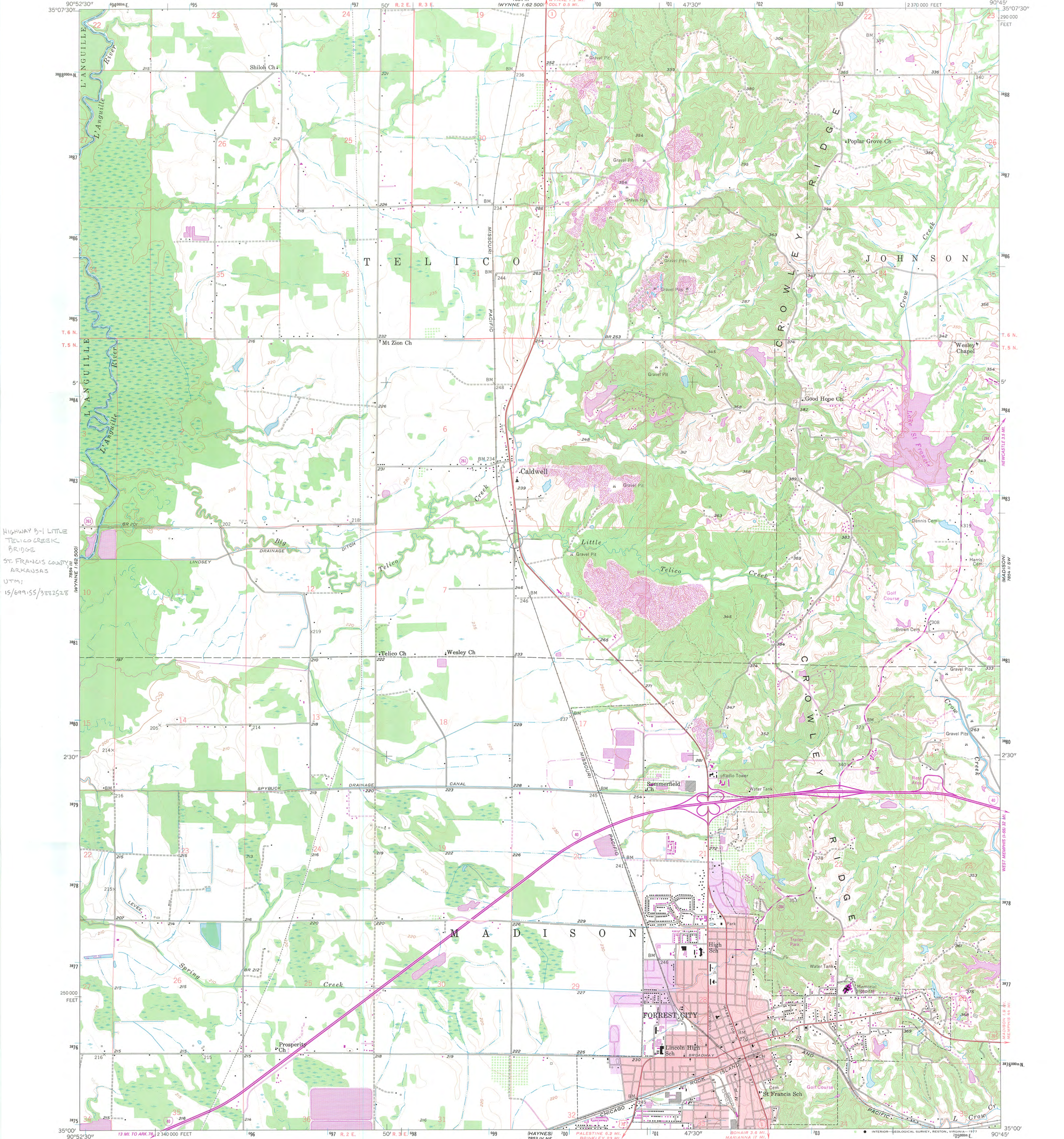
HIGHWAY B-1 LITTLE TELICO CREEK BRIDGE

ST. FRANCIS COUNTY, ARKANSAS

RALPH S. WILCOX

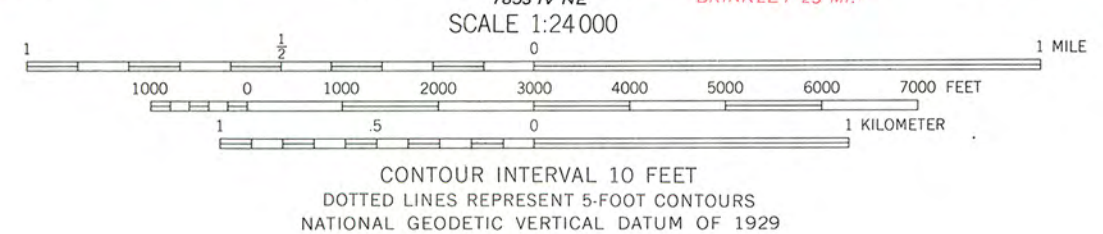
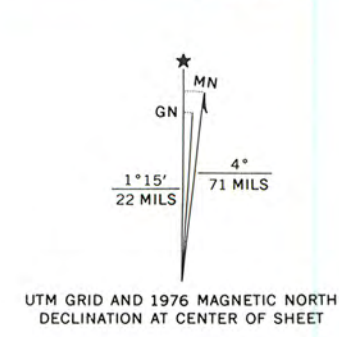
DECEMBER 2008

ARKANSAS HISTORIC PRESERVATION PROGRAM, LITTLE ROCK, AR
VIEW OF THE BRIDGE LOOKING NORTH



HIGHWAY B-1 LITTLE
TELICO CREEK
BRIDGE
ST. FRANCIS COUNTY
ARKANSAS
UTM;
15/699155/3382528

Mapped, edited, and published by the Geological Survey
Control by USGS and USC&GS
Topography from aerial photographs by Kelsh plotter
and by planetable surveys 1958. Aerial photographs taken 1957
Polyconic projection. 1927 North American datum
10,000-foot grid based on Arkansas coordinate system, north zone
1000-meter Universal Transverse Mercator grid ticks,
zone 15, shown in blue
Red tint indicates area in which only
landmark buildings are shown
Revisions shown in purple compiled from aerial photographs
taken 1976. This information not field checked
Purple tint indicates extension of urban areas



ROAD CLASSIFICATION	
Primary highway, hard surface	Light-duty road, hard or improved surface
Secondary highway, hard surface	Unimproved road
Interstate Route	U. S. Route
	State Route

FORREST CITY, ARK.
SE/4 WYNNE 15' QUADRANGLE
N 3500—W 9045/7.5
1958
PHOTOREVISED 1976
AMS 7854 III SE—SERIES V884

THIS MAP COMPLIES WITH NATIONAL MAP ACCURACY STANDARDS
FOR SALE BY U. S. GEOLOGICAL SURVEY, DENVER, COLORADO 80225, OR RESTON, VIRGINIA 22092
AND ARKANSAS GEOLOGICAL COMMISSION, LITTLE ROCK, ARKANSAS 72204
A FOLDER DESCRIBING TOPOGRAPHIC MAPS AND SYMBOLS IS AVAILABLE ON REQUEST



The Department of Arkansas Heritage

Mike Beebe
Governor

Cathie Matthews
Director

Arkansas Arts Council

*

Arkansas Natural Heritage
Commission

*

Delta Cultural Center

*

Historic Arkansas Museum

*

Mosaic Templars
Cultural Center

*

Old State House Museum



Arkansas Historic Preservation Program

1500 Tower Building

323 Center Street

Little Rock, AR 72201

(501) 324-9880

fax: (501) 324-9184

tdd: (501) 324-9811

e-mail:

info@arkansaspreservation.org

website:

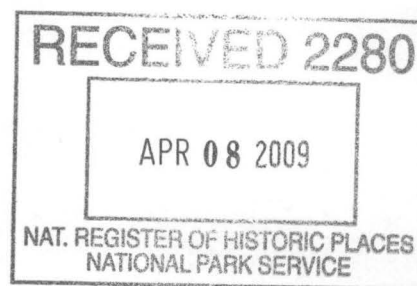
www.arkansaspreservation.com

An Equal Opportunity Employer



April 1, 2009

Dr. Janet Matthews
Chief of Registration
United States Department of the Interior
National Register of Historic Places
National Park Service
8th Floor
1201 Eye Street, NW
Washington, DC 20005



RE: Highway B-1 Little Telico Creek Bridge – Caldwell, St.
Francis County, Arkansas

Dear Dr. Matthews:

We are enclosing for your review the above-referenced nomination. The Arkansas Historic Preservation Program has complied with all applicable nominating procedures and notification requirements in the nomination process.

If you need further information, please call Ralph S. Wilcox of my staff at (501) 324-9787. Thank you for your cooperation in this matter.

Sincerely,

Cathie Matthews
State Historic Preservation Officer

CM:rsw

Enclosure