

United States Department of the Interior  
National Park Service

199



# National Register of Historic Places Registration Form

This form is for use in nominating or requesting determinations for individual properties and districts. See instructions in National Register Bulletin, *How to Complete the National Register of Historic Places Registration Form*. If any item does not apply to the property being documented, enter "N/A" for "not applicable." For functions, architectural classification, materials, and areas of significance, enter only categories and subcategories from the instructions. Place additional certification comments, entries, and narrative items on continuation sheets if needed (NPS Form 10-900a).

## 1. Name of Property

historic name Tarrant City Downtown Historic District

other names/site number N/A

## 2. Location

street & number Parts of East Lake Blvd, Ford Av, Jackson Blvd, Pinson St, Wharton Av


not for publication

city or town Tarrant

vicinity

state Alabama

code AL

county Jefferson

code 073

zip code 35204

## 3. State/Federal Agency Certification

As the designated authority under the National Historic Preservation Act, as amended,

I hereby certify that this  nomination  request for determination of eligibility meets the documentation standards for registering properties in the National Register of Historic Places and meets the procedural and professional requirements set forth in 36 CFR Part 60.

In my opinion, the property  meets  does not meet the National Register Criteria. I recommend that this property be considered significant at the following level(s) of significance:

national  statewide  local

  
Signature of certifying official/Title

March 7, 2010  
Date

Alabama Historical Commission  
State or Federal agency/bureau or Tribal Government

In my opinion, the property  meets  does not meet the National Register criteria.

Signature of commenting official

Date

Title State or Federal agency/bureau or Tribal Government

## 4. National Park Service Certification

I hereby certify that this property is:


entered in the National Register

determined eligible for the National Register

determined not eligible for the National Register

removed from the National Register

other (explain:)

  
Signature of the Keeper

4/26/10  
Date of Action

Tarrant City Downtown Historic District  
Name of Property

Jefferson, Alabama  
County and State

**5. Classification**

**Ownership of Property**  
(Check as many boxes as apply.)

**Category of Property**  
(Check only **one** box.)

**Number of Resources within Property**  
(Do not include previously listed resources in the count.)

- private
- public - Local
- public - State
- public - Federal

- building(s)
- district
- site
- structure
- object

Contributing	Noncontributing	
43	9	buildings
		district
		site
		structure
		object
43	9	<b>Total</b>

**Name of related multiple property listing**  
(Enter "N/A" if property is not part of a multiple property listing)

**Number of contributing resources previously listed in the National Register**

N/A

N/A

**6. Function or Use**

**Historic Functions**  
(Enter categories from instructions.)

**Commerce/Trade:** Specialty Store, Financial

Institution, Restaurant

**Social:** Meeting Hall

**Education:** Library

**Government:** Post Office

**Current Functions**  
(Enter categories from instructions.)

**Commerce/Trade:** Specialty Store, Restaurant, Professional, Business

**Vacant/Not in Use**

**7. Description**

**Architectural Classification**  
(Enter categories from instructions.)

**Late 19th & 20th Century Revivals:**

Mission/Spanish Colonial Revival, Classical

Revival

**Late 19th & Early 20th Century American Movements:** Bungalow/Craftsman

**Modern Movement:** International Style, Art Deco

**Materials**  
(Enter categories from instructions.)

foundation: Concrete

walls: Brick, Concrete Block, Weatherboard

Stucco

Tarrant City Downtown Historic District  
Name of Property

Jefferson, Alabama  
County and State

Other: One & Two Part Commercial Blocks

roof: Asphalt

other: Limestone

### **Narrative Description**

(Describe the historic and current physical appearance of the property. Explain contributing and noncontributing resources if necessary. Begin with a **summary paragraph** that briefly describes the general characteristics of the property, such as its location, setting, size, and significant features.)

#### **Summary Paragraph**

The Tarrant City Downtown Historic District is located in Tarrant City, a working class suburb approximately ten miles northeast of the city limits of Birmingham, Alabama. The District was built between 1913 and c. 1955 and is flat with sidewalks along Pinson Street [Photos #17, #19, #20, #24], the primary east-west thoroughfare, where the majority of resources are located. Parallel to Pinson Street is Jackson Boulevard [Photos #18, #21] where there is a c. 1954 diner (Inv. # 16), a fine c. 1920s multiple bay commercial block (Inv. # 17), and a Jitney Jungle grocery store (Inv. # 18). Side streets are Ford Avenue [Photos #22, #23, #25] where the city's c. 1920s Masonic Temple (Inv. #3; Photo #11) is located, East Lake Boulevard where one of the finest commercial blocks in the District remains (Inv. # 1), and Wharton Street where a fine c. 1928 automobile dealership and showroom was built (Inv. # 52).

### **Narrative Description**

#### **ADDRESSES**

##### East Lake Boulevard

1140 - 1142, 1200-1202 (part of Inv. # 17, along with 1607 - 1617 Jackson Boulevard)

##### Ford Avenue

1105-1107, 1106, 1107-1111, 1112, 1114, 1100 block (Inv. #s 7, 8), 1124, 1125, 1128-1130, 1131, 1135, 1140, 1143

##### Jackson Boulevard

1509, 1607-1617 (part of Inv. # 17 along with 1200-1202 East Lake Boulevard), 1610, 1612

##### Pinson Street

1407, 1409, 1413, 1415, 1419 B, 1400 block between 1419 B and 1424, 1424, 1500, 1505, 1510, 1520-1526, south side of 1500 block (Inv. # 31), SW corner with East Lake Boulevard (Inv. #32), 1600, 1601, 1605, 1609, 1610, 1611, 1612, 1613, 1617, 1621, 1623, 1625, 1716, 1720 A, 1722, 1722 - B, SE corner with Ford Avenue (Inv. # 50)

##### Wharton Avenue

1112

The District has 52 resources of which 43 are contributing and 9 are non-contributing. Of the contributing resources, 37 are commercial buildings including a c. 1920s restaurant (Inv. # 5; Photo #14) and a bank (Inv. # 34; Photo #4). There are also two bungalows (Inv. #s 8, 12; Photo #12), a c. 1924 Masonic Temple (Inv. # 3), two gas stations (Inv. #27; Photo #10 & Inv. #33; Photo #5) and a c. 1928 automobile dealership and showroom (Inv. # 52). One and two part commercial blocks predominate but there are also excellent examples of Craftsman style social and residential buildings (Inv. # 3 - Masonic Temple and Inv. # 12, the Argo House); a Craftsman style automobile dealership (Inv. # 52); a Spanish Revival restaurant (Inv. # 5; Photo #14); and Classical Revival (Inv. # 7, 14, 26; Photo #16) and International Style stores, office and government buildings (Inv. #13, U. S. post office). Finally, there is an outstanding local example of Beaux Arts architecture, the First National Bank (Inv. # 34).

Tarrant City Downtown Historic District  
Name of Property

Jefferson, Alabama  
County and State

Building facades are constructed of red or yellow/gold brick, concrete block, and some stucco and all roofs are flat except for the two bungalows and one residential addition which have front gables. Most commercial blocks have simple decorative details, either limestone or brick, but several have more elaborate details including the Beaux Arts c. 1920s bank which has lion heads across the roof line (Inv. # 34).

### Inventory

#### **East Lake Boulevard**

1. Strickland Pharmacy/now Kessler's Pharmacy and Cissy's. 1140 – 1142 East Lake Boulevard. c. 1925; c. 1960s. (C)  
One story brick corner commercial block that is angled on the corner. There are 3 bays on East Lake Boulevard and two on Jackson Boulevard with c. 1960s aluminum and glass storefronts on all, flat roof with terra cotta coping, original metal awning, decorative square metal vents above the storefront, and a concrete foundation.

#### **Ford Avenue**

2. Brennan Photo and Green Insurance/now Flower Box (in right bay). 1105 – 1107 Ford Avenue. c. 1946; c. 1970s. (C)  
One story, two bay brick commercial block with a flat roof, central recessed entrances in each bay flanked by c. 1970s aluminum storefronts with wood sills and divided wood transoms, and decorative brick along the roof line. There is also a concrete foundation.
3. Masonic Temple and Cambron Grocery/Douglas Engineering Co. 1106 Ford Avenue. c. 1924; 1972. (C)  
Three story, two part, brick building with a flat roof with a projecting parapet and terra cotta coping. In 1972, the building burned and shortly afterwards, it was remodeled with rock on the first floor and four small aluminum storefronts, and a central aluminum double door entrance. Despite the fire and the first story renovations, the building retains its segmentally arched window openings on the second story and its original window openings on the third story, its decorative brick work and its three brick sign panels, each of which is accented by a limestone diamond. [Photo #11]

As the only three story building in the district, the Masonic Temple is a prominent landmark in downtown Tarrant.

4. Library/ now Riverview Wood Works. 1107 - 1111 Ford Avenue. 1936; c. 1960s. (C)  
One story, two bay, brick commercial block with the brick forming a "notched" pattern in the left corner, and a flat roof. The right bay has an original wood double door entrance flanked by two wood storefronts with brick sills and the left bay has a c. 1960s aluminum entrance flanked by two aluminum storefronts with brick sills. There is also a concrete foundation.
5. Hobart Mullins Cafe and Residence/ now Joe's Coffee House. 1112 Ford Avenue. c. 1920; c. late 1930s; c. 1974. (C)  
One story, two bay, stucco and brick (on side facades) Spanish Revival style commercial block with a two story weatherboard residence behind it. There is a flat roof with a very decorative broken arch above each bay, decorative square ceramic tiles under the roof line and a tall brick interior chimney. The left bay arched entrance is flanked by c. 1974 aluminum storefronts and original divided wood transom, and the right bay has a central entrance flanked by the original wood storefronts. In c. 1974, a front porch was also removed. The rear residence appears to have built on at a later date, probably c. late 1930s. It has a front gable and double hung windows. [Photo #14]

Tarrant City Downtown Historic District  
Name of Property

Jefferson, Alabama  
County and State

This is an especially charming building and the only Spanish Revival style in the District.

6. Darrin Dry Goods Store/ now Turn Around Treasures. 1114 Ford Avenue. c. 1924; 1945; 1962. (NC)  
Two story brick commercial block with a flat roof and an aluminum awning, with a diamond design, across the front façade. There is also a concrete foundation. In c. 1962, significant alterations substantially altered the façade including ceramic tile across much of the 1<sup>st</sup> floor, aluminum central double doors and aluminum storefronts.
7. Doctor's office/ now Ford Avenue Building. Ford Avenue flanked by 1114 and 1124. 1936. (C)  
One story Classical Revival style brick free standing building with a flat roof. It has an off center double wood door entrance with a wood transom and divided sidelights and a curved limestone awning. There are four windows with limestone surrounds on the left side of door that are separated by brick pilasters, and one window on the right side with limestone surround, brick steps with decorative wrought iron rail, and a concrete foundation.
8. House. The building on Ford Avenue adjacent 1125 on its south side. c. 1920s; c. 1970s. (C)  
One story weatherboard bungalow with a gable on hip roof, central entrance and sidelights, c. 1970s 1:1 aluminum windows, and a full front porch with a gable roof and four brick columns, exposed roof rafters, two brick chimneys, and a concrete foundation.
9. Musgrove Furniture/ now Electric Time Systems. 1124 Ford Avenue c. 1940; 1970s. (NC)  
One story weatherboard building that was substantially remodeled c. 1970s with ceramic tile across the front façade, a new left side recessed entrance flanked by c. 1970s aluminum and glass storefronts, and a metal awning. There is also a concrete foundation.
10. Green Insurance/ now Print Shop. 1125 Ford Avenue. c. 1945. (C)  
One story commercial block that has yellow brick on the front and red brick on the sides. There is a flat roof that is stepped on the sides, central entrance flanked by wood storefronts, transom with glass block, single glass block decorative insets above the storefronts, and a concrete foundation. [Photo #13]
11. Whitley's Apothecary/ T & T Anointed Beauty Salon. 1128 - 1130 Ford Avenue. c. late 1950s – 1960s. (NC)  
One story free standing building with a flat roof, aluminum siding, aluminum awning, some marble panels, left side entrance with a single storefront window.
12. Argo House. 1131 Ford Avenue. c. 1920s. (C)  
One story weatherboard Craftsman style bungalow with side gables, wood knee braces, 5:1 double hung wood windows, full front porch with tapered wood columns on brick piers and a gable roof with a square wood vent, and a concrete foundation. [Photo #12]  
Dr. Argo was on staff at Norwood Hospital and in 1932 took over Dr. Toxie Sewell's practice and moved to Tarrant City.
13. U. S. Post Office/ now Blankenship Porter Inc. 1135 Ford Avenue. 1950. (C)  
One story, two bay, free standing brick International Style building with a flat roof. Each bay is extended and has a concrete wall around it. There is a left side entrance with a fixed transom, five wood windows with transoms above to the right of the entrance, cement awning, concrete foundation, and an attached garden area with a low brick wall.
14. Alabama Power Company/ now People's First Credit Union. 1140 Ford Avenue. c. 1930s; c. 1960s. (C)  
One story brick free standing building with Classical Revival influences. There is a side gable roof, central entrance with fluted pilasters, rounded fixed decorative awning above the entrance, decorative limestone scrolls, two c. 1960s windows on each side of door with brick sills, and a decorative brick foundation.

Tarrant City Downtown Historic District  
Name of Property

Jefferson, Alabama  
County and State

15. Tarrant City Library. 1143 Ford Avenue. 1952; 2004. (NC)  
One story free standing building that was completely remodeled c. 2004 with brick to cover the original wood construction, aluminum windows and a standing seam roof. None of the original materials remain visible.

### **Jackson Boulevard**

16. Diner/ now Xtreme Wings and Things. 1509 Jackson Boulevard. c. 1954. (C)  
One story free standing concrete block diner, probably a drive-thru restaurant, with a flat roof with overhanging eaves, large exterior concrete block chimney, right side entrance with multiple steel windows in the storefront, metal awning, and a concrete block foundation.
17. Commerical Building. 1607 – 1617 Jackson Boulevard and 1200 – 1202 East Lake Boulevard. c. 1920s. (C)  
One story corner gold brick commercial block with six bays on the Jackson Boulevard side and two bays on East Lake Boulevard all of which have c. 1970s aluminum and glass storefronts. It has a flat roof with a parapet with a nice embattlement design with limestone coping, decorative limestone diamond and square insets, and a concrete foundation. The 1607 Jackson Boulevard storefront has been bricked in c. 1970s.
18. Jitney Jungle. 1610 Jackson Boulevard. c. 1920s; c. 1970s. (C)  
One story gold brick (that has been painted over) commercial block with three bays, flat roof with terra cotta coping, c. 1970s aluminum and glass storefronts with brick sills, and a concrete foundation.
19. Galloway Shoe. 1612 Jackson Boulevard. c. 1940; c. 1970s. (C)  
One story concrete block commercial block with a left side recessed bay, flat roof, c. 1970s aluminum and glass storefront and brick flower wall, and concrete foundation.

### **Pinson Street**

20. Grocery Store/Hughes Painting. 1407 Pinson Street. c. 1940; c. 1955. (C)  
One story, one bay brick commercial block with c. 1955 cut stone front façade, double door entrance on the right side, divided wood storefront, flat roof with terra cotta coping, and concrete foundation. [Photo #9]
21. Commercial Building. 1409 Pinson Street. c. 1940; c. 1962. (NC)  
One story brick commercial block with c. 1962 brick and synthetic stucco front façade with synthetic stucco fluted pilasters and decorative urns, c. 1980s aluminum and glass storefronts, flat roof with terra cotta coping, and a concrete foundation.
22. Robertson Electric. 1413 Pinson Street. c. 1940. (C)  
One story, one bay brick Art Deco style commercial block with stucco over brick on the front face, recessed central entrance flanked by metal storefronts, etched geometric octagonal and rectangular designs above the storefront, and a flat roof. [Photo #15]
23. Brown's Market and Hill's Grocery. 1415 Pinson Street. c. 1920s; c. 1955. (C)  
One story, one bay Craftsman style brick commercial block with c. 1955 cut stone around and above the storefront. There is a flat roof with projecting parapet and a fixed awning with green terra cotta tile on the front and stepped roof with terra cotta coping on the sides, c. 1970s aluminum and glass storefront with central entrance, multiple paned metal transom and wood cornice with square wood supports above it. There is also a brick foundation. [Photo #8]
24. Crumpton Radio. 1419 B Pinson Street. c. 1940. (C)

Tarrant City Downtown Historic District

Jefferson, Alabama

Name of Property

County and State

One story, two bay brick (front) and concrete block (sides) commercial block with a flat roof with terra cotta coping and a projecting parapet, and a concrete foundation. The recessed entrance has two storefronts that are angled at a 45-degree angle, divided by a brick column that recesses like an inverted "V," and include an original wood entrance door at the far end of each storefront. There is also a wood transom above each storefront.

25. Lucky Star Grocery/ now Pinson Street Lucky Star. SW corner Pinson Street and East Lake Blvd. c. 1940; c. 1951. (C)  
One story cement block corner commercial block with an angled corner c. 1951 aluminum and glass entrance and original wood and screen door, hip roof with parapet, original fixed metal awning, and three window openings on the Pinson Street side with glass block. There is also a concrete block foundation.
26. Tarrant Mattress Company. 1424 Pinson Street. c. 1920s; c. 1960s. (C)  
One story yellow brick commercial block with Classical Revival details. It has three bays of which the two end bays include a c. 1960s aluminum and glass storefront but the entrance door from the middle bay storefront was remodeled to eliminate its door. The original transoms above each bay remain but are covered up with plywood. There are decorative brick pilasters with decorative limestone caps, decorative brick around signage panels above each bay, and a flat roof with three very decorative limestone urns along the roofline. [Photo #16]
27. Studebaker Car Company and Showroom/ now Gas Station and Office. 1500 Pinson Street. c. 1920s. (C)  
One story brick and stucco gas station and office with two wood storefronts and a flat roof on the right. The left bay has an "L" shaped hipped terra cotta roof that extends over the drive thru area. There is also a concrete foundation. [Photo #10]  
This is one of two gas stations in the District.
28. Fennel Nash Studebaker and Hudson/ now Brand Auto Service. 1505 Pinson Street. c. 1920s; c. 1940s. (C)  
One story, two bay commercial block brick with one storefront bay on the right side and one garage bay on the left side. There is a partially operational multiple paned steel transom above the storefront, flat roof with a broken projecting parapet and limestone coping, end brick pilasters with decorative limestone caps, decorative limestone details and decorative brickwork, and a concrete foundation. There is a small one story c. 1940s addition with jalousie windows but there is no roof. [Photo #7]
29. A & P Grocery/now Dollar Bill's. 1510 Pinson Street. c. 1950; c. 1960s. (C)  
One story, three bay light yellow brick and concrete block (on sides) commercial block with a fixed metal awning along the front, three original gooseneck lamps above the awning, and a flat roof. There are three c. 1960s aluminum and glass storefronts with limestone sills including one recessed entrance, flat roof, and a concrete foundation.
30. Beauty and Barber Shop/ now Commercial Building. 1520 - 1526 Pinson Street. c. 1955. (C)  
One story free standing yellow brick shopping center with six bays. There is a metal mansard roof, divided wood storefronts and wood and glass doors on each bay, and a concrete foundation.  
  
This originally housed Helen Reeves Beauty Shop and Eddie's Barber Shop.
31. King's Hardware and Barber Shop/ now The Keg. Pinson Street adjacent on the east side to Inv. # 32. c. 1920s. (C)  
One story brick commercial block with two bays on the Pinson Street side and one bay on the East Lake Boulevard side all of which retain their wood storefronts, and transoms with brick sills. There are c. 1970s aluminum and glass entrances on each side of the Pinson Street storefronts with original wood transoms, and there is a flat roof with terra cotta coping, two arched brick chimneys, two square vents above the Pinson Street storefronts, and concrete foundation. [Photo #6]

Tarrant City Downtown Historic District  
Name of Property

Jefferson, Alabama  
County and State

32. All Pro Transmissions. Pinson Street behind the parking lot on the SW corner with East Lake Blvd. c. 1930; c. 1955. (C)  
One story brick commercial block with a rounded façade, flat roof, double wood entrance doors flanked by wood storefronts with brick sills, and a concrete foundation. There is a c. 1955 one story concrete block addition with a flat roof and four garage bays. [Photo #6]
33. Texaco and Gurley Service Station/76 Gas Station. 1600 Pinson Street. c. 1920s; c. 1945; c. 1970s. (C)  
One story free standing brick gas station and office with three garage doors on the right side and a wood storefront with a wood and glass door on the left side. There is hipped roof with side hip on gable roof, extended flat terra cotta tile roof over the front drive through bays supported by massive square brick columns with square limestone details, one brick chimney, concrete foundation, and a rear c. 1940s brick addition with a tin side gable roof, steel casement windows, and exposed wood rafters. [Photo #5]
34. First National Bank/ 1601 Pinson Street. c. 1925. (C)  
One story corner Beaux Arts style brick and limestone commercial block with a flat roof, wood storefronts with wood transoms along the Pinson Street façade divided by paired decorative brick pilasters with limestone caps. There are decorative limestone friezes between the storefronts and transoms and a decorative limestone frieze around the recessed corner entrance that includes lion's head and garlands, decorative wood vents below the roof line, and a plaster over brick foundation. [Photo #4]
- This is the most elegant and well defined style in the District.
35. Self Appliance/ now Commercial Building. Pinson Street flanked by 1600 and 1610. c. 1948; c. 1960s. (NC)  
Two story concrete block and brick (on sides) commercial block with original fixed metal awning that has a curved decorative ceiling, storefronts that have been covered with metal, wood transom over the front door, flat roof, decorative brick work, decorative concrete foundation, and a c. 1960s concrete block addition on the left side.
36. Cunningham Home Appliance/Red's Flooring. 1605 Pinson Street. c. 1920s; c. 1960s. (C)  
One story brick commercial block with one recessed entrance on the right side and a c. 1960s aluminum and glass storefront on left side. There is a flat roof with limestone coping, decorative end brick pilasters, and a concrete foundation.
37. Store/ now Nova Tech. Inc. 1609 Pinson Street. possibly c. 1940s; remodeled c. 1980s. (NC)  
One story building with c. 1980s wood shingles on the facades, central recessed entrance flanked by c. 1980s aluminum and glass storefronts, c. 1980s ceramic tile at the entrance, and concrete foundation.
38. Best Auto/ now vacant. 1610 Pinson Street. c. 1940s; c. 1960s. (C)  
One story brick commercial block with a flat roof and concrete coping, central entrance with c. 1960s aluminum and glass double doors flanked by c. 1960s aluminum and glass storefronts and original brick sills, decorative metal vents, and a concrete foundation.
39. Dry Cleaners/ now R&R Main Street Bar. 1611 Pinson Street.. c. 1940s; c. 1954; c. 1960s. (C)  
One story commercial building with a c. 1954 cut stone front façade, central entrance flanked by aluminum and glass storefronts, flat roof, and concrete foundation.
40. Western Supermarket/ now EZ Pawn. 1612 Pinson Street. c. 1940; c. 1960s. (C)  
One story brick commercial block with four bays, flat roof with a projecting parapet and limestone coping, metal vents, and storefronts that have been bricked in c. 1960s.
41. Fennel Drug/ now Accounting Office. 1613 Pinson Street. c. 1970s. (NC)



Tarrant City Downtown Historic District

Jefferson, Alabama

Name of Property

County and State

One story brick building with a flat roof, metal mansard roof, 3 aluminum and glass windows, off center entrance, and a concrete foundation.

42. Green Realty/ now Commercial Building. 1617 Pinson Street. c. 1940; c. 1970s (NC)  
One story brick commercial block with a flat roof with terra cotta coping on the sides, recessed central entrance with a transom flanked by c. 1970s aluminum and glass storefronts, c. 1970s ceramic tiles and metal panels on the front façade, and a concrete foundation.
43. Ashton Dry Goods Store/ now Law Offices and Carlisle and Carlisle P. C. 1621 Pinson Street. c. 1946. (C)  
Nice one story brick pie shaped commercial block with black glazed (on the bottom) and white (on the top) brick, flat roof, central recessed entrance flanked by c. 1960s aluminum and glass storefronts and metal panels above storefronts, and a concrete foundation. [Photo #3]
44. Tarrant Photo/ now Tabernacle of David. 1623 Pinson Street. c. 1923; c. 1940s; c. 1954; c. 1960s. (C)  
Two story brick and stucco (on the front façade) commercial block a flat roof and crenellated parapet, c. 1954 green Carrara glass on front lower façade, and a central recessed entrance flanked by c. 1960s aluminum and glass storefronts, and a decorative cornice above the entrance. There are three metal casement windows on the second story, decorative elements between the windows and the first floor, and a concrete foundation. [Photo #2]
45. Cafe. 1625 Pinson Street. c. 1948 – 1955. (C)  
One story commercial block with cut stone on the front, flat roof, an entrance on the right side with two storefront windows on the left side, decorative stone work above the storefront, original flat metal awning, and a concrete foundation. The original owners were Greek immigrants.
46. People's Store and Kanter Cohen/ now Commercial Building. 1716 Pinson Street. 1947; c. 1960s. (C)  
One story brick and stucco commercial block with a flat roof, two bays separated by brick pilasters, wood transoms above the wood storefronts, brick sills along the storefronts which have been covered with ply wood, and a concrete foundation.
47. Imperial Theatre/ now Yerby Air Conditioning. 1720 - A (was 1718) Pinson Street. c. 1940. (C)  
One story, one bay, brick commercial block with stucco over brick on the side facades. There is a flat roof that is stepped on the sides, decorative brick along the roof line, storefronts with brick sills and wood transoms on the right side, and a concrete foundation.
48. Tom Jones Cleaners/ now Commercial Building. 1720 – B Pinson Street. c. 1940s. (C)  
One story brick commercial block with a flat roof with limestone coping, decorative brick along the roof line, two central entrances with wood transoms and limestone sills flanked by wood storefronts, and a concrete foundation.
49. Clifton Shoe Repair/ now We Cut Grass. 1722 Pinson Street. C. 1940s; c. 1960s. (C)  
One story brick and concrete block (on the sides) commercial block with a flat roof that is stepped on the sides, terra cotta tile coping, one exterior brick chimney, central entrance flanked with c. 1960s aluminum and glass storefronts and limestone sills, and a concrete block foundation.
50. Tarrant Drug Store. SE corner of Ford and Pinson Street. 1913; c. 1960s. (C)  
Two story brick commercial block with notched decorative brick at the corners, flat roof, angled entrance bay with c. 1960s aluminum and glass doors, 1:1 c. 1960s aluminum double hung windows, and a concrete foundation. [Photo #1]

This was the first brick building in Tarrant City. A Dr. Hubbard had his offices in the rear of the building.

51. Nugent's Hardware Store. Pinson Street adjacent to Inv. #s 50. 1920s; c. 1960s. (C)

Tarrant City Downtown Historic District

Name of Property

Jefferson, Alabama

County and State

Two story gold brick commercial block with a flat roof, c. 1960s cut stone on the 1<sup>st</sup> floor front façade, and ply wood over the 1<sup>st</sup> floor entrance. There are c. 1960s 2:2 double hung aluminum windows on the 2<sup>nd</sup> floor with limestone sills, and concrete foundation.

### **Wharton Street**

52. Romano Chevrolet Dealership/ now Vacant. 1112 Wharton Street; c. 1928. (C)  
One story brick free standing Craftsman style building with end brick pilasters and limestone caps and a flat roof that is stepped on the sides, and a fixed terra cotta tile awning on the front. There are three front garage bays; the left one has the original central recessed entrance with c. 1940s wood storefront and transom, and the central opening has a divided wood transom. A U. S. Commodity (pre-Food Stamp) store was located here during the 1930s.

### **Archaeological Component**

Although no systematic archaeological survey has been conducted in the District, it is likely that there are subsurface remains.

Tarrant City Downtown Historic District  
Name of Property

Jefferson, Alabama  
County and State

**8. Statement of Significance**

**Applicable National Register Criteria**

(Mark "x" in one or more boxes for the criteria qualifying the property for National Register listing.)

- A Property is associated with events that have made a significant contribution to the broad patterns of our history.
- B Property is associated with the lives of persons significant in our past.
- C Property embodies the distinctive characteristics of a type, period, or method of construction or represents the work of a master, or possesses high artistic values, or represents a significant and distinguishable entity whose components lack individual distinction.
- D Property has yielded, or is likely to yield, information important in prehistory or history.

**Areas of Significance**

(Enter categories from instructions.)

Commerce

Architecture

**Period of Significance**

1913-c. 1955

**Significant Dates**

**Significant Person**

(Complete only if Criterion B is marked above.)

N/A

**Cultural Affiliation**

**Architect/Builder**

**Criteria Considerations**

(Mark "x" in all the boxes that apply.)

Property is:

- A Owned by a religious institution or used for religious purposes.
- B removed from its original location.
- C a birthplace or grave.
- D a cemetery.
- E a reconstructed building, object, or structure.
- F a commemorative property.
- G less than 50 years old or achieving significance within the past 50 years.

**Period of Significance (justification)**

The period of significance for the Tarrant City Downtown Historic District extends from 1913, the construction date of the Tarrant Drug Store (Inv. #50), the earliest, extant building in the district, to c. 1955 when the last buildings (Inv. #s 20, 23, 30, 32, 45) constructed in this commercial core were erected in the 1400-1600 blocks of Pinson Street.

Tarrant City Downtown Historic District  
Name of Property

Jefferson, Alabama  
County and State

**Criteria Considerations (explanation, if necessary)**

N/A

**Statement of Significance Summary Paragraph** (Provide a summary paragraph that includes level of significance and applicable criteria.)

The Tarrant City Downtown Historic District is locally significant under Criterion A: Commerce for its representation of the commercial development of Tarrant City from 1913-c. 1955. The commercial core of Tarrant City really began to develop in the 1910s with the construction of the first brick building, the Tarrant Drug Store (Inv. #50), at the corner of Ford Avenue and Pinson Street in 1913 and the extension of Birmingham's trolley line into the area and the founding of the Tarrant Land Company in 1914. Circa 1955 saw the development of Tarrant City's downtown area completed with the construction of several buildings along Pinson Street. The Tarrant City Downtown Historic District is also locally significant under Criterion C: Architecture for its documentation of commercial and residential architecture in a thriving, industrial town in Alabama in the first half of the 20th century. Many of the buildings are modestly designed one and two part commercial blocks but there are also locally important examples of early 20th century revival styles, the Craftsman style and the International Style.

**Narrative Statement of Significance** (Provide at least one paragraph for each area of significance.)

**Criterion A, Commerce**

The Tarrant City Downtown Historic District is significant for its documentation of the commercial development, 1913 - c. 1955, of Tarrant City, a working class industrial suburb approximately 10 miles northeast of Birmingham, Alabama. Its development mirrors the growth of Birmingham in the first half of the twentieth century, but while the larger city began to diversify its economy away from industry to a white collar service economy, Tarrant City remained largely industrial. The District includes all of the contiguous commercial buildings in the core of Tarrant City including a bank (Inv. # 34), restaurants and cafes (Inv. #s 5, 16, 45), Masonic Temple (Inv. # 3), library (Inv. # 4), two gas stations (Inv. #s 27, 33), two automobile showrooms (Inv.#s 27, 52), two dry cleaners (Inv. #s 39, 51), and a post office (Inv. # 13).

There is also a c. 1940 theatre (Inv. # 47), doctor's office (Inv. # 7), seven grocery stores (Inv. #s 3, 18, 20, 23, 25, 29, 40), three drug stores (Inv. #s 1, 11, 50), two hardware stores (Inv. #s 31, 51), two photo studios (Inv. #s 2, 44), insurance company (Inv. # 10), shoe store (Inv. #19), electric shop (Inv. # 22), radio store (Inv. # 24), beauty and barber shop (Inv. # 30), and a c. 1954 diner (Inv. # 16).

Although Tarrant City is highly industrialized, the Tarrant City Downtown Historic District contains no industrial resources. Instead, the District documents the growth of a self sufficient town with a thriving commercial core. This town has remained a suburb of Birmingham but, because it developed after the annexation of many suburbs into Birmingham in 1910, it has remained a separate entity with its own character that is more typical of a small town than of a suburb.

**Criterion C, Architecture**

The Tarrant City Downtown Historic District is significant for its concentration of small town commercial and residential architecture from 1913 - c. 1955. Included are excellent examples of c. 1920s and c. 1940s - early 1950s one and two part commercial blocks (Inv. #s 1, 2, 10, 17); c. 1920s Spanish Revival (Inv. # 5; Photo #14); Craftsman residential (Inv. # 12; Photo #12) and social architecture (Inv. # 3; Photo #11), Classical Revival (Inv. #s 7, 14), Beaux Arts (Inv. # 34; Photo #4), and an International style U. S. post office (Inv. # 13).

Tarrant City Downtown Historic District  
Name of Property

Jefferson, Alabama  
County and State

All of the resources are one story commercial blocks except for two two part commercial blocks including a fine Beaux Arts 1920s bank with decorative limestone friezes and lions heads at the roofline (Inv. # 34), two one story bungalows (Inv. #s 8, 12) and one two story residential addition (Inv. # 5), a three story Craftsman Style Masonic Temple (Inv. # 3), a one story International style post office (Inv. # 13), and a one story free standing doctor's office with Classical Revival influences (Inv. # 7).

**Developmental history/additional historic context information** (if appropriate)

Historic downtown Tarrant developed c. 1900 – c. 1955 as a commercial center to serve the working-class population of the independent industrial suburb. In the shadows of the smokestacks in the mineral-rich Jones Valley, Tarrant City was incorporated in 1918 with a residential population of only seven hundred thirty-four, and by that time, industry was king. Remarkably, at the turn of the century, the area that would become Tarrant City was the site of dirt and dairy farming and related agrarian trade.<sup>i</sup> The town's incorporation followed the growth of extractive industries in the early years of the twentieth century, namely the Dolcito Quarry (c. 1902)<sup>ii</sup> and the Ketona Quarry (c. 1900), operated by the Tennessee Coal, Iron, and Railroad Company which also built many houses in the area for their employees.<sup>iii</sup>

Tarrant's advantageous location just northeast of Birmingham aided in its ability to lure both industrial and residential development. The Birmingham trolley line was extended into the area in mid-1914.<sup>iv</sup> That year also marked the founding of the Tarrant Land Company, a development firm founded in 1914 by Mr. F.I. Tarrant and several local land owners. Mr. C.M. Green, father of Jefferson County Commissioner and Birmingham Mayor W. Cooper Green, served as the company's manager.<sup>v</sup>

As the industries grew, so did the working population and the need for services. Local land owners and entrepreneurs, as well as the industrial community, capitalized on the opportunity. For instance, Mr. Ellis Bynum, a prominent dairy farmer and land owner built the first brick building in the city in 1913, on the corner of Ford Avenue and Pinson Street which housed Tarrant's first drug store (Inv. # 50). Mr. Bynum also built the city's first post office and appointed its first postmaster. Ketona Quarry hired Dr. L. W. Hubbard in 1914. He was the first doctor in the city. A private dentist, Dr. Murphy, opened his practice around the same time.<sup>vi</sup>

In 1916 a group of men organized the National Cast Iron Pipe Company.<sup>vii</sup> Shortly after that, the L&N RR shops located at nearby Boyles did most of the repair work for the Railroad, employing a large number of people.<sup>viii</sup> During the First World War, Alabama By-Products Corporation opened its foundry under the supervision of the U.S. Government to aid in the war effort. By 1920, the variety of industries of the city employed and built housing for a large number of people.<sup>ix</sup>

Like in most of America, the roaring twenties ushered in an era of modernization and progress. The first auto-related enterprises opened in Tarrant during the '20s, namely Studebaker Car Company (Inv. # 27; Photo #10), and two auto service stations (Inv. # 28; Photo #7 & # 33; Photo #5) opened on Pinson Street in the middle of the decade, followed by All Pro Transmissions (Inv. # 32; Photo #6) in c. 1930. A Chevrolet dealership (Inv. # 52) opened in the same era on nearby Wharton Street.<sup>x</sup>

<sup>i</sup> "70 Years' Founder's Day: History of Tarrant City 1918-1989." (Booklet). Published by City of Tarrant City, 1918.

<sup>ii</sup> *City of Tarrant Newsletter*, Vol. 1, Issue 2, June, 1981.

<sup>iii</sup> *70 Years' Founder's Day: History of Tarrant City 1918-1989*.

<sup>iv</sup> Alvin Hudson, *Streetcars of Birmingham*, Birmingham, Alabama, 1971.

<sup>v</sup> *70 Years' Founder's Day: History of Tarrant City 1918-1989*.

<sup>vi</sup> *Ibid.*

<sup>vii</sup> *Ibid.*

<sup>viii</sup> *Tarrant City Alabama: Power, Water, Gas, Acreage – Ideal Industrial Sites*. Commercial Club of Tarrant City, 1939.

<sup>ix</sup> *70 Years' Founder's Day: History of Tarrant City 1918-1989*.

<sup>x</sup> Chief Billy Hewitt, Interview with Pamela King, February 2007.

Tarrant City Downtown Historic District  
Name of Property

Jefferson, Alabama  
County and State

To accommodate the new automobiles and delivery trucks, the city financed improvement bonds to pave streets and sidewalks for the first time in history. A new city hall and fire station were constructed, the police and volunteer fire departments were organized, the first garbage pickup service was started with two one-horse wagons, and work began on the city's sanitary sewer system.<sup>xi</sup> While Tarrant's service capacity grew, so did its residential base. Hungry to boost residential growth and economic prosperity, the adjacent community of Boyles, home of the L&N Railroad Shops just north of Birmingham, was annexed into Tarrant in 1927 and capitalized on the array of services offered by the city.<sup>xii</sup>

To accommodate the blue collar workers and both old and new residents in Tarrant, commercial developments flourished in the expanded city, particularly the downtown area. In addition to the automotive enterprises, the three-story brick Masonic Temple (Inv. # 3), a Spanish-style coffee house (Inv. # 5), a dry goods store (Inv. # 6), a doctor's office (Inv. # 13), and bungalow houses (Inv. # 8, 12) were constructed in the district along Ford Avenue. The elegant First National Bank was erected (Inv. # 34), a grocer (Inv. # 23; Photo #8), the Tarrant Mattress Company (Inv. # 26; Photo #16), an appliance store (Inv. # 36), and a barber shop (Inv. # 31; Photo #6) all opened on Pinson Street. The Jitney Jungle variety store, (Inv. # 18), and two other commercial structures (Inv. # 17) were constructed flanking Jackson Boulevard in this period.

Tarrant could not escape the dark cloud of the early years of the Great Depression. Many residents, with high unemployment and little cash savings, simply abandoned their homes and moved elsewhere as they could not afford the house note. The Red Cross, in aid to the impoverished, struck a deal with the mortgage holders of these abandoned homes to allow many homeless outsiders of the city to move in them. This was seen as a protective measure, to ensure the vacant houses were not destroyed. The idea backfired, as most of the houses were destroyed for fire materials.<sup>xiii</sup>

In 1932, in spite of Tarrant's economic downturn, city leaders, according to *Minute Books*, undertook street improvement projects after it had been brought to the city council's attention that streets and highways needed to be beautified and shrubbery and trees should be planted on Pinson Street. Moreover, incidentally, highway advertising signs were beginning to be seen for the first time along the Tarrant Pinson Highway (now Highway 79).

The New Deal programs of the era also aided revitalization efforts, and resulted in one impressive public project for downtown Tarrant. The WPA partly funded a new library at Tarrant City Park once the site of the home of Tarrant founder C.M. Green.<sup>xiv</sup> In 1936, it opened amid much excitement from the community. According to *The Birmingham News*, the library had 5,174 members that, for the first time in Tarrant City, could take advantage of evening hours. The new library was a solid brick structure with a cornice and pediments of carved and cast stone. The interior walls were either solid brick or hollow tile. Western knotty white pine, imported from the west coast, was used for the interior wood work. The wood was treated with hot wax, causing the wood to darken with age. The *News* boasted that after a few years the walls will turn "rich tobacco brown." The wallpaper used in the library's lounge dated back a half-century, creating an early American ambiance.<sup>xv</sup> Unfortunately, the library was torn down in 1952, a new library constructed, and then completely remodeled in 2004 (Inv. # 15, NC).

Undoubtedly the industrial developments of the era, as well as the public works projects of the New Deal affected the community's sense of pride and belonging. In the late 1930s, the *News* reported that local youths had erected a clubhouse in Tarrant Park. Money for the building materials came from revenue collected from softball games. The softball leagues

<sup>xi</sup> Saliba, Yvonne, "To honor golden citizens: Tarrant looks back over 50 years", *The Birmingham News*, 1968.

<sup>xiii</sup> *70 Years' Founder's Day: History of Tarrant City 1918-1989*.

<sup>xiii</sup> *70 Years' Founder's Day: History of Tarrant City 1918-1989*.

<sup>xiv</sup> Richardson, Bertha, "Tarrant Purchases Site for New Public Library" *Jefferson County Cities*, 1938.

<sup>xv</sup> "Formal Dedication Held for \$50,000 Structure Built with WPA Aid", *The Birmingham News*, 1938.

Tarrant City Downtown Historic District  
Name of Property

Jefferson, Alabama  
County and State

were organized by Park Director B.L. Vann. Two carpenters donated time as supervisors -- and waited until the activities of the building could pay for their services.<sup>xvi</sup> It seemed to some that the dark days of the depression might be coming to an end.

By 1939, the population of Tarrant City had grown to 10,000, more than tenfold the population upon incorporation just twenty years prior. The city was a center of industrial growth due to its large industrial water and electrical supply, which was contracted with the Tennessee Valley Authority, after sparring with Birmingham electrical, the long time supplier, over the abandonment of improvement projects despite rate hikes. Together with the City of Bessemer, Tarrant was able to tap onto a TVA distribution line that extended from Guntersville to Bessemer, and a water supply line that was extended to the city.

The supply line ran 6500 feet from the main line to the municipal reservoir. With a unique, and cheaper, source of power and water, and strong sense of economic development fostered by low industrial taxes, The Commercial Club, the forerunner of the Chamber of Commerce and composed of Tarrant's energetic business and professional men, published a pamphlet emphasizing the advantages of Tarrant as a location for business & industries, with the TVA electrical and water supply as a focal point -- along with the low tax rates. Alabama Power Company remained the supplier of residential electricity, and built an office on Ford Avenue (Inv. # 14).<sup>xvii</sup>

During and immediately following World War II, Tarrant was embraced by new development ideas. Birmingham embarked on a failed consolidation movement with the city. With the closing of the streetcar line, the city was looking towards new transportation options, such as taxi stands or a trolley line. A beautification movement began to disguise the undesirable effects of the industrial developments of previous years given the dust and smoke emissions, and many older buildings were remodeled or torn down to facilitate more aesthetically pleasing and more modern design.<sup>xviii</sup> Strickland's pharmacy was erected on the site of the old John's Grocery on East Lake Boulevard (Inv. # 1), Musgrove furniture store (Inv. # 9), and a print shop (Inv. # 10; Photo #13) were built along Ford Avenue, two new commercial structures flanked Jackson Boulevard (Inv. #s 16 & 19).

Pinson Street in particular exploded with development during this time. The Lucky Star Grocery (Inv. # 25) and Ashton Dry Goods (Inv. # 43; Photo #3) opened their facilities, along with several new retail stores and offices along Pinson Street (Inv. #s 20 [Photo #9], 21, 24, 29, 30, 35, 37, 38, 39, 40, 42, 44 [Photo #2], 45, 46, 48, & 49). The Imperial Theater had opened its doors in 1940 (Inv. # 47).

In just over a half century, Tarrant evolved into a bustling, industrial, independent suburb of Birmingham. From open land to platted dirt roads to trolley lines and busy highways, downtown Tarrant become the commercial and social center of a thriving blue-collar community.

---

## 9. Major Bibliographical References

---

**Bibliography** (Cite the books, articles, and other sources used in preparing this form.)

*Birmingham News*. August 7, 1935.

*Birmingham News*. Saliba, Yvonne, "To honor golden citizens: Tarrant looks back over 50 years." 1968.

*Birmingham News*. "Formal Dedication Held for \$50,000 Structure Built with WPA Aid." 1938.

---

<sup>xvi</sup> "Tarrant Young People Pitch in to Build Clubhouse", *The Birmingham News*, 1939.

<sup>xvii</sup> *Tarrant City Alabama: Power, Water, Gas, Acreage - Ideal Industrial Sites*,

<sup>xviii</sup> "70 Years' Founder's Day: History of Tarrant City 1918-1989.

Tarrant City Downtown Historic District  
Name of Property

Jefferson, Alabama  
County and State

*Birmingham News*. "Tarrant Young People Pitch in to Build Clubhouse", 1939.

Hewitt, Billy. Interview with Pamela King. February 2007.

*How we came to be Tarrant*. City of Tarrant Newsletter. June 1981.

Hudson, Alvin W. *Streetcars of Birmingham*, Birmingham, Alabama. 1971.

*Minute Book*. City of Tarrant. Located at Tarrant City City Hall, 1924-1947.

Richardson, Bertha, "Tarrant Purchases Site for New Public Library" *Jefferson County Cities*, 1938.

Tarrant City Alabama: Power, Water, Gas, Acreage -- Ideal industrial Sites, Commercial Club of Tarrant City, 1939.

"70 Years' Founder's Day: History of Tarrant City 1918-1989." Booklet. Published by the City of Tarrant City. 1989.

**Previous documentation on file (NPS):**

- preliminary determination of individual listing (36 CFR 67 has been requested)
- previously listed in the National Register
- previously determined eligible by the National Register
- designated a National Historic Landmark
- recorded by Historic American Buildings Survey # \_\_\_\_\_
- recorded by Historic American Engineering Record # \_\_\_\_\_
- recorded by Historic American Landscape Survey # \_\_\_\_\_

**Primary location of additional data:**

- State Historic Preservation Office
  - Other State agency
  - Federal agency
  - Local government
  - University
  - Other
- Name of repository: Tarrant City Hall; Tarrant Library

Historic Resources Survey Number (if assigned): \_\_\_\_\_

**10. Geographical Data**

**Acreage of Property** 50 acres  
(Do not include previously listed resource acreage.)

**UTM References**

(Place additional UTM references on a continuation sheet.)

1	<u>16</u>	<u>521470</u>	<u>3716300</u>	3	<u>16</u>	<u>521660</u>	<u>3715420</u>
	Zone	Easting	Northing		Zone	Easting	Northing
2	<u>16</u>	<u>521860</u>	<u>3716000</u>	4	<u>16</u>	<u>520840</u>	<u>3715810</u>
	Zone	Easting	Northing		Zone	Easting	Northing

**Verbal Boundary Description** (Describe the boundaries of the property.)

The boundary of the Tarrant Downtown Historic District is shown on the accompanying map entitled "Tarrant Downtown Historic District," 2007.



Tarrant City Downtown Historic District  
Name of Property

Jefferson, Alabama  
County and State

**Boundary Justification** (Explain why the boundaries were selected.)

The boundary of the Tarrant Downtown Historic District has been drawn to include every contiguous contributing building. The District is surrounded on the south, north and east by residential neighborhoods. To the north is a major highway and industrial concerns. To the west is a separate town, now a suburb of the City of Birmingham.

**11. Form Prepared By**

name/title Pamela Sterne King, Consultant (reviewed by Susan Enzweiler, AHC NR Coordinator)  
organization PSKing Associates date 9-11-2008  
street & number 3307 Altaloma Way telephone 205-823-1679  
city or town Birmingham state Alabama zip code 35216  
e-mail \_\_\_\_\_

**Additional Documentation**

Submit the following items with the completed form:

- **Maps:** A **USGS map** (7.5 or 15 minute series) indicating the property's location.  
A **Sketch map** for historic districts and properties having large acreage or numerous resources. Key all photographs to this map.
- **Continuation Sheets**
- **Additional items:** (Check with the SHPO or FPO for any additional items.)

**Photographs:**

Submit clear and descriptive photographs. The size of each image must be 1600x1200 pixels at 300 ppi (pixels per inch) or larger. Key all photographs to the sketch map.

Name of Property: Tarrant City Downtown Historic District

City or Vicinity: Tarrant

County: Jefferson

State: Alabama

Photographer: Pamela King

Date Photographed: August 2007 [Photos 1-16] and September 2008 [Photos 17-25]

Description of Photograph(s) and number:

Photo #1 of 25: Tarrant Drug Store, front façade. Corner of Ford Ave. & Pinson St., camera facing E

Tarrant City Downtown Historic District  
Name of Property

Jefferson, Alabama  
County and State

- Photo #2 of 25: Tarrant Photo/ now Tabernacle of David, front façade. 1623 Pinson St., camera facing SE
- Photo #3 of 25: Ashton Dry Goods Store/ now Carlisle and Carlisle Law Offices, front façade. 1621 Pinson St., camera facing SE
- Photo #4 of 25: First National Bank/now AmSouth Bank, front façade. Corner of Pinson St. & East Lake Blvd., camera facing SE
- Photo #5 of 25: Union 76 Gas Station, front façade. 1600 Pinson St., camera facing NW
- Photo #6 of 25: Pinson St. Streetscape, Inv. #31 [right] & Inv. #32 [left]. Camera facing SE
- Photo #7 of 25: Fennel Nash Studebaker and Hudson/ now Brand Auto Service, front facade. 1505 Pinson St., camera facing SE
- Photo #8 of 25: Brown's Market and Hill's Grocery, front façade. 1415 Pinson St., camera facing SE
- Photo #9 of 25: Grocery Store/Hughes Painting, front facade. 1407 Pinson St., camera facing SE
- Photo #10 of 25: Studebaker Car Company and Showroom/ now Gas Station and Office, front façade [right] & side elevation [left]. 1500 Pinson St., camera facing NE
- Photo #11 of 25: Masonic Temple and Cambron Grocery/Douglas Engineering Co, front facade. 1106 Ford Ave., camera facing E
- Photo #12 of 25: Argo House, front facade. 1131 Ford Ave., camera facing SW
- Photo #13 of 25: Green Insurance/ now Print Shop, front facade. 1125 Ford Ave., camera facing SW
- Photo #14 of 25: Hobart Mullins Cafe and Residence/ now Joe's Coffee House, front facade. 1112 Ford Ave., camera facing NE
- Photo #15 of 25: Robertson Electric, front facade. 1413 Pinson St., camera facing SE
- Photo #16 of 25: Tarrant Mattress Company, front facade. 1424 Pinson St., camera facing NW
- Photo #17 of 25: Pinson St. between East Lake Blvd. and Wharton Ave., camera facing SW
- Photo #18 of 25: Jackson Blvd. between East Lake Blvd. and the alley, camera facing NE
- Photo #19 of 25: Pinson St. Streetscape between East Lake Blvd. and Ford Ave., camera facing NE
- Photo #20 of 25: Pinson St. Streetscape between East Lake Blvd. and Ford Ave., camera facing NE
- Photo #21 of 25: Jackson Blvd. between East Lake Blvd. and Wharton Ave., camera facing SW
- Photo #22 of 25: Ford Ave. between Pinson St. and Jackson Blvd., camera facing SE

Tarrant City Downtown Historic District  
Name of Property

Jefferson, Alabama  
County and State

Photo #23 of 25: Ford Ave. between Pinson St. and Jackson Blvd., camera facing SE

Photo #24 of 25: Pinson St. between East Lake Blvd. and Ford Ave., camera facing NE

Photo #25 of 25: Ford Ave. between Jackson Blvd. and Pinson St., camera facing NW

**Property Owner:**

(Complete this item at the request of the SHPO or FPO.)

name Multiple  
street & number \_\_\_\_\_ telephone \_\_\_\_\_  
city or town \_\_\_\_\_ state \_\_\_\_\_ zip code \_\_\_\_\_

**Paperwork Reduction Act Statement:** This information is being collected for applications to the National Register of Historic Places to nominate properties for listing or determine eligibility for listing, to list properties, and to amend existing listings. Response to this request is required to obtain a benefit in accordance with the National Historic Preservation Act, as amended (16 U.S.C.460 et seq.).

**Estimated Burden Statement:** Public reporting burden for this form is estimated to average 18 hours per response including time for reviewing instructions, gathering and maintaining data, and completing and reviewing the form. Direct comments regarding this burden estimate or any aspect of this form to the Office of Planning and Performance Management, U.S. Dept. of the Interior, 1849 C. Street, NW, Washington, DC.

**United States Department of the Interior**  
National Park Service

**National Register of Historic Places**  
**Continuation Sheet**

Tarrant City Downtown H.D.

Name of Property

Jefferson, AL

County and State

**SUPPLEMENTARY LISTING RECORD**

**NRIS Reference Number:** 09000105

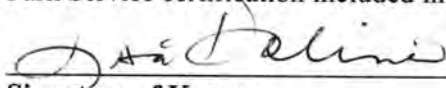
**Date Listed:** 4/26/2010

**Property Name:** Tarrant City Downtown Historic District

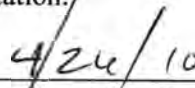
**County:** Jefferson

**State:** AL

This property is listed in the National Register of Historic Places in accordance with the attached nomination documentation, subject to the following exceptions, exclusions, or amendments, notwithstanding the National Park Service certification included in the nomination documentation.



**Signature of Keeper**



**Date of Action**

**Amended Items in Nomination**

This SLR is issued to correct the number of contributing and noncontributing historic resources.

Due to nonhistoric alterations, the building at 1625 Pinson Street (Inventory #45) is considered noncontributing. The total resource count within the historic district is 42 contributing buildings and 10 noncontributing buildings.

**Notification:**

The Alabama State Historic Preservation Office was notified of this amendment.

**Distribution:** National Register property file  
Nominating Authority, without nomination attachment

UNITED STATES DEPARTMENT OF THE INTERIOR  
NATIONAL PARK SERVICE

NATIONAL REGISTER OF HISTORIC PLACES  
EVALUATION/RETURN SHEET

REQUESTED ACTION: NOMINATION

PROPERTY NAME: Tarrant City Downtown Historic District

MULTIPLE NAME:

STATE & COUNTY: ALABAMA, Jefferson

DATE RECEIVED: 1/27/09      DATE OF PENDING LIST: 2/17/09  
DATE OF 16TH DAY: 3/04/09      DATE OF 45TH DAY: 3/12/09  
DATE OF WEEKLY LIST:

REFERENCE NUMBER: 09000105

REASONS FOR REVIEW:

APPEAL: N DATA PROBLEM: N LANDSCAPE: N LESS THAN 50 YEARS: N  
OTHER: N PDIL: N PERIOD: N PROGRAM UNAPPROVED: N  
REQUEST: Y SAMPLE: N SLR DRAFT: N NATIONAL: N

COMMENT WAIVER: N

ACCEPT     RETURN     REJECT    3/12/09 DATE

ABSTRACT/SUMMARY COMMENTS:

*see return sheet*

RECOM./CRITERIA *Patricia*

REVIEWER *Caroline Delmon*

DISCIPLINE *Historic*

TELEPHONE \_\_\_\_\_

DATE *3/12/09*

DOCUMENTATION see attached comments Y/N see attached SLR Y/N

If a nomination is returned to the nominating authority, the nomination is no longer under consideration by the NPS.



IN REPLY REFER TO:

# United States Department of the Interior

NATIONAL PARK SERVICE

1849 C Street, N.W.

Washington, D.C. 20240

## United States Department of the Interior National Park Service National Register of Historic Places

### Comments Evaluation/Return Sheet

**Property Name:** Tarrant City Downtown Historic District  
**Property Location:** Jefferson County, AL  
**Reference Number:** 09-000105  
**Date of Return:** March 12, 2009

#### Reason for Return

The Tarrant City Downtown Historic District nomination is being returned for technical corrections and additional information needs regarding the number of contributing/noncontributing resources. The following must be addressed for this nomination to be considered acceptable:

#### Section 5 and 7

The nomination photographs are not referenced to a photo key or within the inventory descriptions. Since some of the buildings have been extensively altered and are no longer contributing (e.g. Masonic Temple), it is unclear whether the contributing and noncontributing building counts are accurate. Please re-evaluate the contributing and noncontributing resources, provide a photo key, and indicate the photo numbers within the inventory descriptions.

Please call me at 202-354-2239, or e-mail at <lisa\_deline@nps.gov> if you have any questions.

Lisa Deline, Historian  
National Register of Historic Places  
March 12, 2009

UNITED STATES DEPARTMENT OF THE INTERIOR  
NATIONAL PARK SERVICE

NATIONAL REGISTER OF HISTORIC PLACES  
EVALUATION/RETURN SHEET

REQUESTED ACTION: RESUBMISSION

PROPERTY NAME: Tarrant City Downtown Historic District

MULTIPLE NAME:

STATE & COUNTY: ALABAMA, Jefferson

DATE RECEIVED: 3/12/10 DATE OF PENDING LIST:  
DATE OF 16TH DAY: DATE OF 45TH DAY: 4/26/10  
DATE OF WEEKLY LIST:

REFERENCE NUMBER: 09000105

DETAILED EVALUATION:

ACCEPT  RETURN  REJECT 4/26/10 DATE

ABSTRACT/SUMMARY COMMENTS:

*District significant in architecture & Commerce.*

RECOM./CRITERIA A & C

REVIEWER U. S. Delina

DISCIPLINE Historic

TELEPHONE \_\_\_\_\_

DATE 4/26/10

DOCUMENTATION see attached comments Y/N see attached SLR Y/N



PINSON

WALK

STOP



1) Tarrant City Downtown Historic District  
Tarrant Drug Store  
Corner of Ford Ave. and Pinson St.  
Tarrant City, AL  
Jefferson County, AL  
View of front facing SE  
Pamela King; 2007  
Negatives: ATC

1923



TABERNACLE OF DAVID  
*New Creation  
Fellowship*

Portraits  
841-9694



2) Tarrant City Downtown Historic District

Tarrant City, TX

Jefferson County, TX

1623 Pinson Street (Tarrant Photo)

View of front facade facing SE

Pamela King; 2008

Negatives: AHC

LAW  
OFFICES

Carlisle &  
Carlisle



3) Ashton Dry Goods (now Carlisle & Carlisle  
Law Offices

1621 Pinson Street

Tarrant City, TX

Jefferson County, TX

Tarrant City Downtown Historic District

View of front facade facing SE

Pamela King, 2008

Negatives: ATC

AM SOUTH BANK

YALANT  
BRANCH



4) First National Bank / Now Am South  
Corner Pinson Street & East Lake Blvd.  
Tarrant City, AL  
Jefferson County, AL  
View of front facade facing SE  
Pamela King; 2007  
Negatives: AHC  
Tarrant City Downtown Historic District

1-82 N-11-12911 823



union

UNION  
KING KROOKS ER OUT

UNION



5) Union 76 Gas Station  
1600 Pinson Street

Tarrant City, AL

Tarrant City Downtown Historic District

Jefferson County, AL

View of front facing ~~East~~ NW

Pamela King; 2007

Negatives: AHC

ALL PRO TRANSMISSIONS  
841-1593

*The Keg*

*The Keg*  
ILLUSTRATIONS - ARTS - GIFTS

*The Keg*  
ILLUSTRATIONS - ARTS - GIFTS



4.) Pinson Street Streetscape; Inv. # 531, 32

Tarrant City, AL

Tarrant City Downtown Historic District

Jefferson County, AL

View facing SE

Pamela King; 2007

Negatives: AHC



BRAND  
• AUTO •  
SERVICE

BRAND  
AUTO  
SERVICE

1) Fennel Nash Studebaker and Hudson  
Showroom

1505 Pinson Street

Tarrant City, AL

Tarrant City Downtown Historic District

Jefferson County, AL

View of front facing SE

Pamela King; 2007

Negatives: AHC



JUDAH CCoS

relaxation  
- culture - colors  
- accessories and more

HIS

JUDAH  
CCoS

OPEN TO  
ALL

WALK-INS  
CLOSED  
WELCOME



8) Brown's Market and Hill's Grocery  
1415 Pinson Street  
Tarrant City, AL  
Tarrant City Downtown Historic District  
Jefferson County, AL  
View of front facade facing SE  
Pamela King; 2007  
Negatives: AMC



1427

MOTOR



9) Grocery Store  
1407 Pinson Street  
Tarrant City, AL  
Tarrant City Downtown Historic District  
Jefferson County, AL  
View of front facade facing SE  
Pamela King; 2007  
Negatives: AHC



CAWANYOOD  
TUNIS NY OUT!  
ON 7DA

10) Studebaker Car Company

1500 Pinson Street

Tarrant City, AL

Tarrant City Downtown Historic District

Jefferson County, AL

View of front, side facing NE

Pamela King, 2007

Negatives: ATC



11) Masonic Temple  
1106 Ford Avenue  
Tarrant City, AL  
Tarrant City Downtown Historic District  
Jefferson County, AL  
view of front, side facing East  
Pamela King; 2007  
Negatives: ATC



12) Argo House  
1137 Foad Avenue  
Tarrant City, AL  
Tarrant City Downtown Historic District  
Jefferson County, AL  
view of front facing SW  
Pamela King; 2007  
Negatives: AHC



21  
PRINT  
SHOP

PRINT  
SHOP

SERVICES  
COPY  
PRINT  
MAIL  
CDS  
FAX



13) Green Insurance / Now Print Shop

1125 Ford Avenue

Tarrant City, AL

Tarrant City Downtown Historic District

Jefferson County, AL

View of front facing SW

Pamela King; 2007

Negatives: AHC



JOE'S  
COFFEE HOUSE

14) Hobart Mullins Cafe & Residence, now Joe's  
1112 Ford Avenue  
Tarrant City, AL  
Tarrant City Downtown Historic District  
Jefferson County, AL  
View of front facade facing NE  
Pamela King; 2007  
Negatives: AHC



1010

FURNITURE

CUSTOMERS

CUSTOMERS

FURNITURE

15) Robertson Electric

1413 Pinson Street

Tarrant City, AL

Tarrant City Downtown Historic District

Jefferson County, AL

View of front facade facing SE

Pamela King; 2007

Negatives: AHE

11/06 NPH/ML/10/11/07



16) Tarrant Mattress Company  
1424 Pinson Street

Tarrant City, AL

Tarrant City Downtown Historic District

Jefferson County, AL

View of front facade facing NW

Pamela King; 2007

Negatives: AHC



SALE

XXL

SALE

SALE



17) Tarrant City Downtown Historic District  
Pinson Street Streetscape  
View looking SW  
Tarrant City, AL / Jefferson County  
Pamela King; 2008  
AHC - negatives

3587180, 3587180-R1-E024  
Ritz, R1280E, 09/10/08



NEW L. NEW TALKIN

NO PARKING HERE

12 P...  
4 for \$10

Easton First  
Moving  
402-0011



18) Tarrant City Downtown Historic District  
Jackson Blvd. Streetscape looking NE  
Tarrant City, AL / Jefferson County  
Pamela King; 2008  
ATC negatives

3587180, 3587180-R1-E011  
Ritz, R1280E, 09/10/08



The Coca-Cola ANY SERVICE Coca-Cola

2 HOUR PARKING  
8:00 AM  
TO 6:00 PM

ANY SERVICE  
Coca-Cola

WALK

WALK

WALK

19) Tarrant City Downtown Historic District  
Pinson Street Streetscape

View looking NE

Tarrant City, AL / Jeffersons County

Pamela King; 2008

AHC - negatives

3587180, 3587180-R1-E020  
Ritz, R1280E, 09/10/08



20) Tarrant City Downtown Historic District  
Pinson Street Streetscape at East Lake Blvd.  
View looking NE

Tarrant City, AL / Jefferson County  
Pamela King; 2008  
AHC - negatives

3587180, 3587180-R1-E018  
Ritz, R1280E, 09/10/08



FOVLE'S

AHEAD



Tarrant City Downtown Historic District  
21) Jackson Blvd. Streetscape looking SW  
Tarrant City, TX / Jefferson County  
Pamela King; 2008  
AHC negatives

3587180, 3587180-R1-E012  
Ritz, R1280E, 09/10/08



22) Tarrant City Downtown Historic District  
Ford Avenue Streetscape looking SE  
Tarrant City, AC / Jefferson County  
Pamela King; 2008  
AHC. negatives

3587180, 3587180-R1-E016  
Ritz, R1280E, 09/10/08



2 THE PARKING  
8:00 AM  
TO 6:00 PM

G&R  
Fashion & Alterat  
what's in mind we can design  
41-0110 fax 841-0

23) Tarrant City Downtown Historic District  
Ford Avenue Street scape looking  
SE

Tarrant City, AZ / Jefferson County  
Pamela King; 2008  
ATC negatives

3587180, 3587180-R1-E015  
Ritz, R1280E, 09/10/08



24) Tarrant City Downtown Historic District  
Pinson Street Streetscape

View looking NE

Tarrant City, AL / Jefferson County

Pamela King; 2008

AHC-negatives

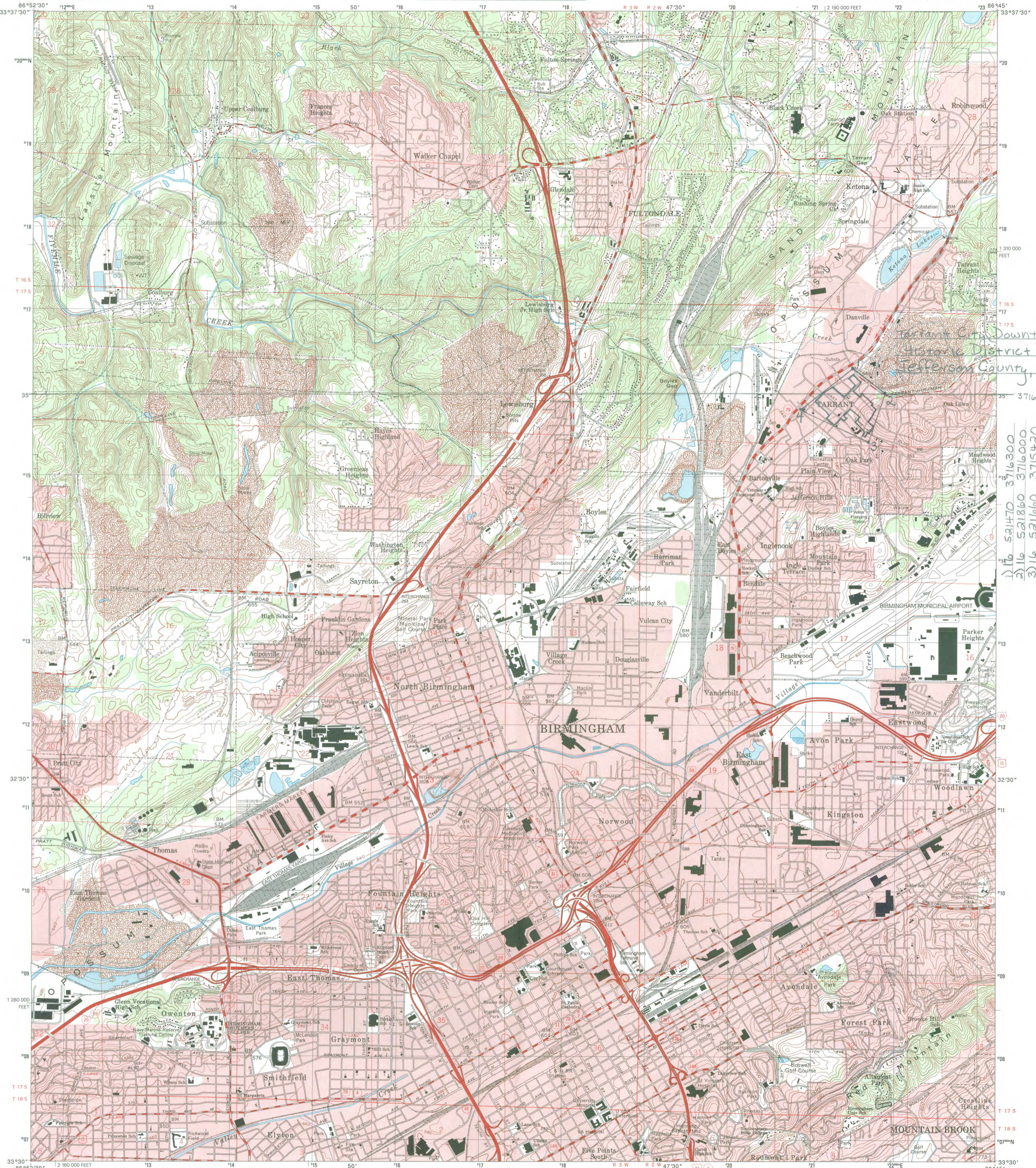
3587180, 3587180-R1-E017  
Ritz, R1280E, 09/10/08





Tarrant City Downtown Historic District  
25) Ford Avenue Streetscape looking NW  
Tarrant City, AL / Jefferson County  
Pamela King; 2008  
AHC negatives

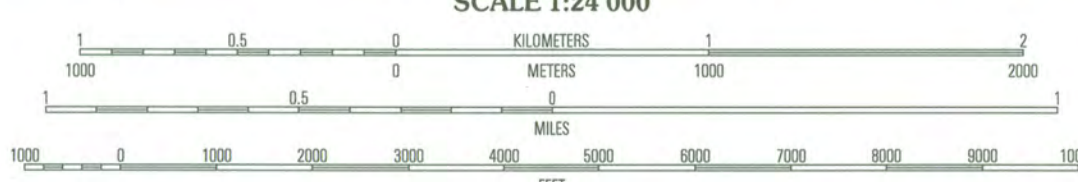
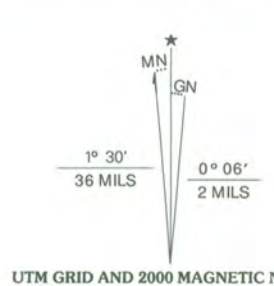
3587180, 3587180-R1-E013  
R1E, R1288E, 09/18/88



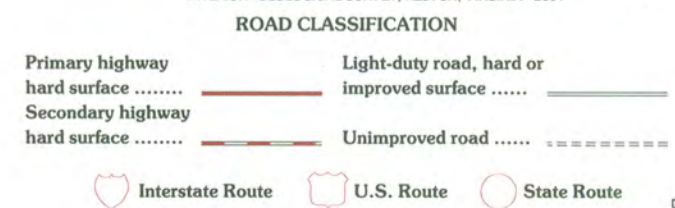
Tarrant City  
Historic District  
Jefferson County, AL

- 1) 16 521470 3716300
- 2) 16 521860 3716000
- 3) 16 521660 3715420
- 4) 16 520840 3715810

Produced by the United States Geological Survey  
Topography compiled 1957. Planimetry derived from imagery taken 1977 and other sources. Public Land Survey System and survey control current as of 1959  
North American Datum of 1983 (NAD 83). Projection and 1000-meter grid: Universal Transverse Mercator, zone 16 10 000-foot ticks: Alabama Coordinate System of 1983 (west zone)  
North American Datum of 1927 (NAD 27) is shown by dashed corner ticks. The values of the shift between NAD 83 and NAD 27 for 7.5-minute intersections are obtainable from National Geodetic Survey NADCON software  
There may be private inholdings within the boundaries of the National or State reservations shown on this map  
Landmark buildings verified 1959



CONTOUR INTERVAL 20 FEET  
NATIONAL GEODETIC VERTICAL DATUM OF 1983  
TO CONVERT FROM FEET TO METERS, MULTIPLY BY 0.3048



1	2	3
4	5	6
7	8	

1 Brookside  
2 Gardendale  
3 Paces  
4 Adamsville  
5 Irondale  
6 Bessemer  
7 Birmingham South  
8 Cahaba Heights

BIRMINGHAM NORTH, AL  
1997

THIS MAP COMPLIES WITH NATIONAL MAP ACCURACY STANDARDS  
FOR SALE BY U.S. GEOLOGICAL SURVEY, P. O. BOX 25286, DENVER, COLORADO 80225  
A FOLDER DESCRIBING TOPOGRAPHIC MAPS AND SYMBOLS IS AVAILABLE ON REQUEST

NIMA 3651 III SE-SERIES V844

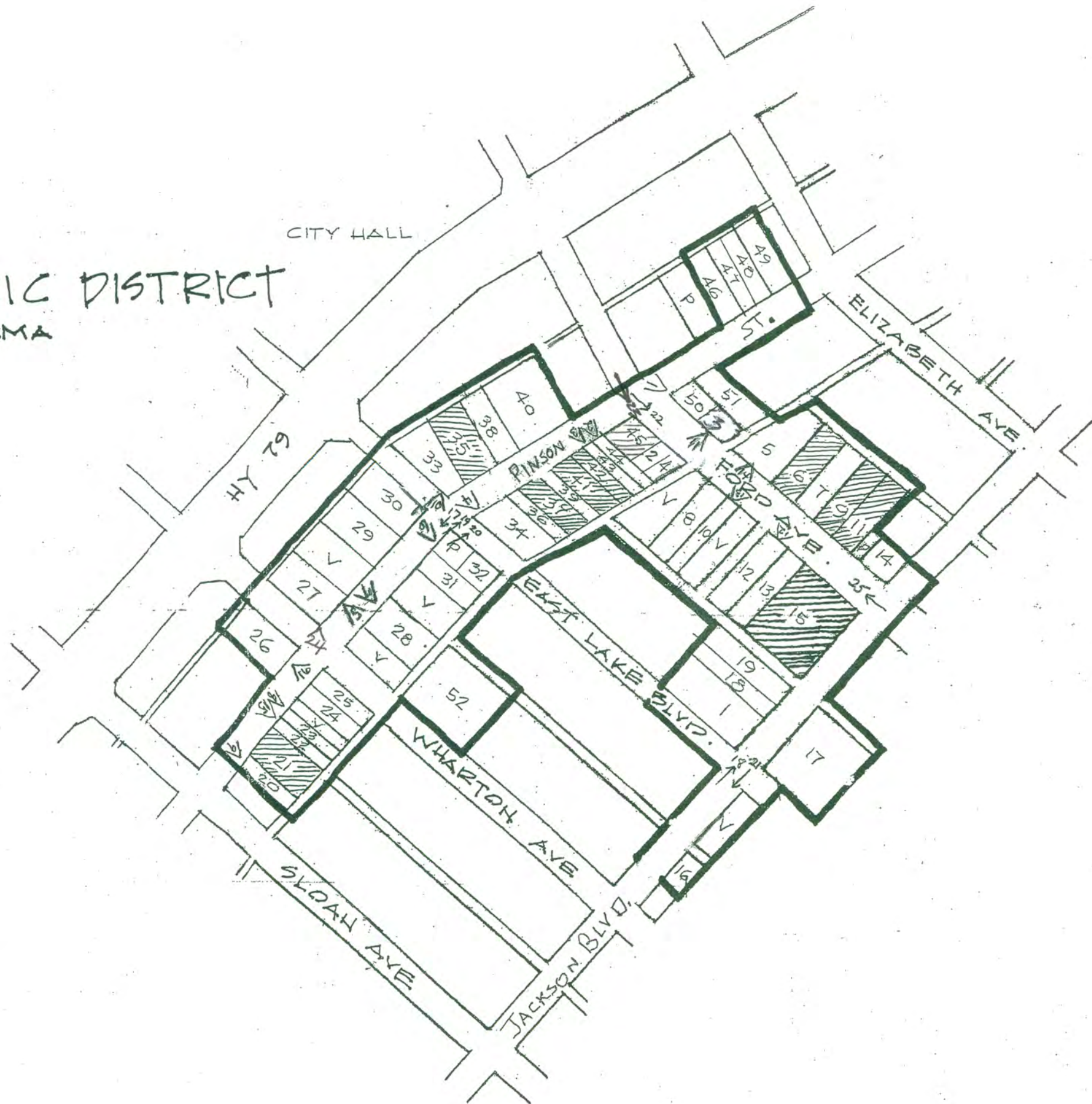


TARRANT CITY  
 DOWNTOWN HISTORIC DISTRICT  
 JEFFERSON COUNTY, ALABAMA

1" = 200'



- CONTRIBUTING
- NON-CONTRIBUTING
- VACANT
- PARKING

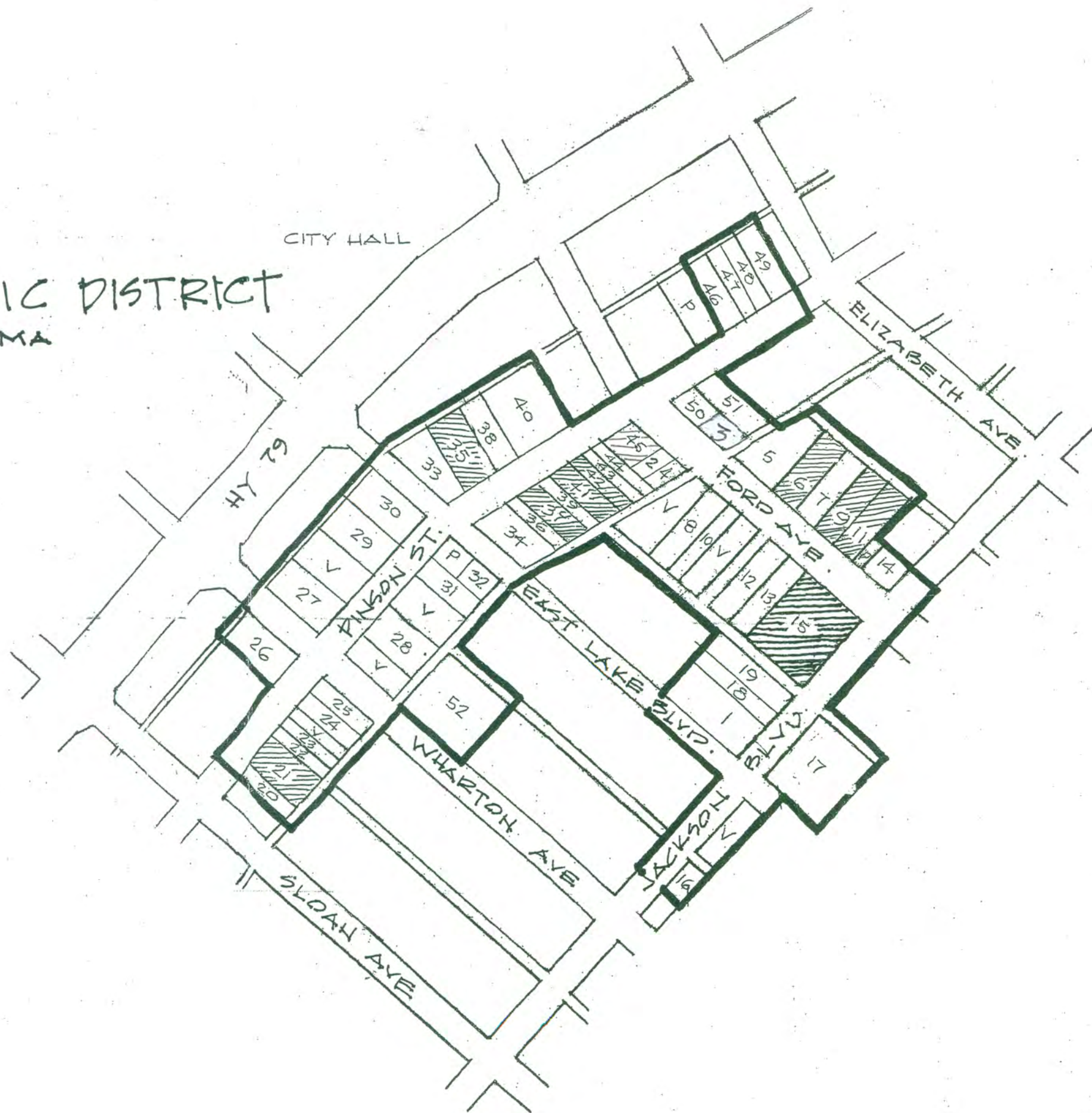


TARRANT CITY  
 DOWNTOWN HISTORIC DISTRICT  
 JEFFERSON COUNTY, ALABAMA

1" = 200'



- CONTRIBUTING
- NON-CONTRIBUTING
- v VACANT
- P PARKING





STATE OF ALABAMA  
ALABAMA HISTORICAL COMMISSION  
468 SOUTH PERRY STREET  
MONTGOMERY, ALABAMA 36130-0900



FRANK W. WHITE  
EXECUTIVE DIRECTOR

TEL: 334-242-3184  
FAX: 334-240-3477

January 22, 2009

Dr. Janet Matthews, Keeper of the National Register  
U.S. Department of the Interior, NPS  
Cultural Resources  
National Register, History & Education Programs  
1201 "I" Street, NW (2280)  
Washington, D.C. 20005

Dear ~~Dr. Matthews~~: *Jan*:

Enclosed please find the nomination and supporting documentation to be considered for listing the following Alabama resource in the National Register of Historic Places:

Tarrant City Downtown Historic District  
Jefferson County

Your consideration of the enclosed National Register of Historic Places nomination is appreciated.

Truly Yours,

Elizabeth Ann Brown  
Deputy State Historic Preservation Officer

EAB/gmb

Enclosures



STATE OF ALABAMA  
ALABAMA HISTORICAL COMMISSION  
468 SOUTH PERRY STREET  
MONTGOMERY, ALABAMA 36130-0900



FRANK W. WHITE  
EXECUTIVE DIRECTOR

March 5, 2010

TEL: 334-242-3184  
FAX: 334-240-3477

Ms. Carol Shull  
Keeper of the National Register  
U. S. Department of the Interior, NPS  
Cultural Resources  
National Register, History & Education Programs  
1201 "I" Street NW (2280)  
Washington, D. C. 20005

RE: Reference # 09000105

Dear ~~Ms. Shull~~ *Carol*:

Enclosed please find the nomination and supporting documentation to be considered for listing the following Alabama resource in the National Register of Historic Places:

Tarrant City Downtown Historic District  
Tarrant, Jefferson County, Alabama

Your consideration of the enclosed National Register of Historic Places nomination is appreciated.

Truly Yours,

Elizabeth Ann Brown  
Deputy State Historic Preservation Officer

EAB/sme/nw

Enclosures