

INVENTORY FORM FOR NOMINATED PROPERTIES

Name of property: William Stolte, Jr. House (Reedsburg MRA) Owner: Michael Quinn

Address: 432 South Walnut Street Owner's address: 432 South Walnut Street

City: Reedsburg County: Sauk Reedsburg, Wisconsin 53959

REGISTRATION INFORMATION

- 160 NRHP Certification (date)
- Listed in NRHP (LI)
 - Determined eligible in DOE process (DD)
 - Determined eligible in nomination process (DN)
 - Additional documentation added to nomination (AD)
 - Boundary increased (BI)
 - Boundary Decreased (BD)
 - Delisted (DL)

170 Thematic or Multiple Resource Nomination Name (code)
Multiple Resources of Reedsburg

180 NRHP List Name William Stolte, Jr. House

- 190 Level of Significance
- national (NA)
 - state (ST)
 - local (LO)

- 200 District Classification
- pivotal (P)
 - contributing (C)
 - non-contributing (NC)

- 210 Applicable Criteria
- event (A)
 - person (B)
 - architectue/engineering (C)
 - information potential (D)

- 215 Criteria Considerations
- religious property (A)
 - moved property (B)
 - birthplace or grave (C)
 - cemetery (D)
 - reconstructed property (E)
 - commemorative property (F)
 - less than 50 years old (G)

220 Area of Significance (code)
Architecture

230 Period of Significance
c. 1890- 1899 (Date of construction: Source A,B,C,E,F)

340 Review Board Date 10/19/84

70 USGS Quad Map
Reedsburg West Quadrangle

80 UTM Coordinates (Format: 99-999999-9999999)
15-741760-4823690

85 Listed Acreage Less than one

60 Verbal Boundary Description City of Reedsburg, Assessor's Plat, AL 144 and 168. AL= Assessor's Lot. This is the official legal description of the nominated property on file with city and county.

Description

The William Stolte, Jr. house is a large 2½ story clapboard sided Queen Anne style house with a sandstone foundation. It has a hip and gable roof with scroll-like modillions along the cornices and a hip roof dormer centered on the front (east) side of the roof. Below this a narrow bay with three 4/4 windows projects. The northeast corner of the house has a three story tower capped by a conical roof covered with imbricated wood shingles and cross-hatched wood. Part of a finial sits on top of the tower roof. The third story section of the tower has small round paired columns with wood panels between them. Apparently wood panels were placed here later and the tower was open or had windows originally. The first and second story of the tower contain windows and the tower itself is sided with the same imbricated and cross-hatched shingles that are on the tower roof.

The southeast corner of the upper story of the house exterior consists of a gable with a solid arched bargeboard over small columns. Below this is a second story bay window with a small gable roof and one ornamental scroll brace and pendant remaining on the corner. The surface material is the same imbricated and cross-hatched wood found elsewhere on the exterior of the house. A leaded glass window is on the first story front of the house.

An elaborate one story wrap around porch extends from the northeast corner across the east facade and extends past the southeast corner to cover a part of the south side of the house. Round fluted porch columns are singly placed except under a pedimented porch entry where they are paired. The pedimented entry has a circular and triangular design on it. To the north of the entry, the porch is semi-circular in plan, while south of the main entry and on the southeast corner of the house, the porch juts out sharply at a circular gazebo-like section. This area of the porch has a conical roof more steeply pitched than the rest of the porch and the remains of a finial top off the roof.

See other side of sheet

Architectural/Engineering Statement of Significance

The William Stolte, Jr. house is one of the most architecturally significant Queen Anne residences in Reedsburg. Although other Queen Anne style residences are included in the nomination, none feature the same details as the Stolte, Jr. house, which is distinguished by intricately detailed woodwork. The house at 325 Second Street, in the Park Street Historic District, is of similar proportions and design, with a tower, bays and wrap around porch, but it has Colonial Revival details. Another individually nominated property, the William Riggert house at 547 South Park Street has intricate woodwork but is differently proportioned. The outstanding design features of the William Stolte, Jr. house include the tower with its decorative wood roof, second story gable ornamentation and the elaborate first story porch. Overall, the woodwork detail and degree of integrity of this residence contribute to its picturesque appearance and local significance.

690 Bibliographic References (Sources)

- A - Jack Vinson, Reedsburg, winter, 1984.
- B - Bensel, A. A., Bensel's Sauk County Directory (Fond du Lac P. B. Haber Printing House, 1890).
- C - Tax receipts for Reedsburg, 1872-1873 and 1889-1890, at State Historical Society of Wisconsin, Madison.
- D - Krug, Merton Edwin, History of Reedsburg and the Upper Baraboo Valley (Madison, Democrat Printing Company, 1929).
- E - Belknap, T. Harry, Sauk County Directory (Baraboo, Republic Print, 1898-1899).
- F - Schuette, W. J. and Freer, Theo., Reedsburg Directory (Reedsburg, Free Press Printing House, 1902-1903).
- G - "The Reedsburg Times", Souvenir Edition, May 5, 1899.
- H - "Wisconsin Industrial Review", March 1912 (Vol. XIII, No. 147).

700 Study Units (code)Commerce: Retail Trade

350 Demolished

360 Date Demolished

_____yes _____no

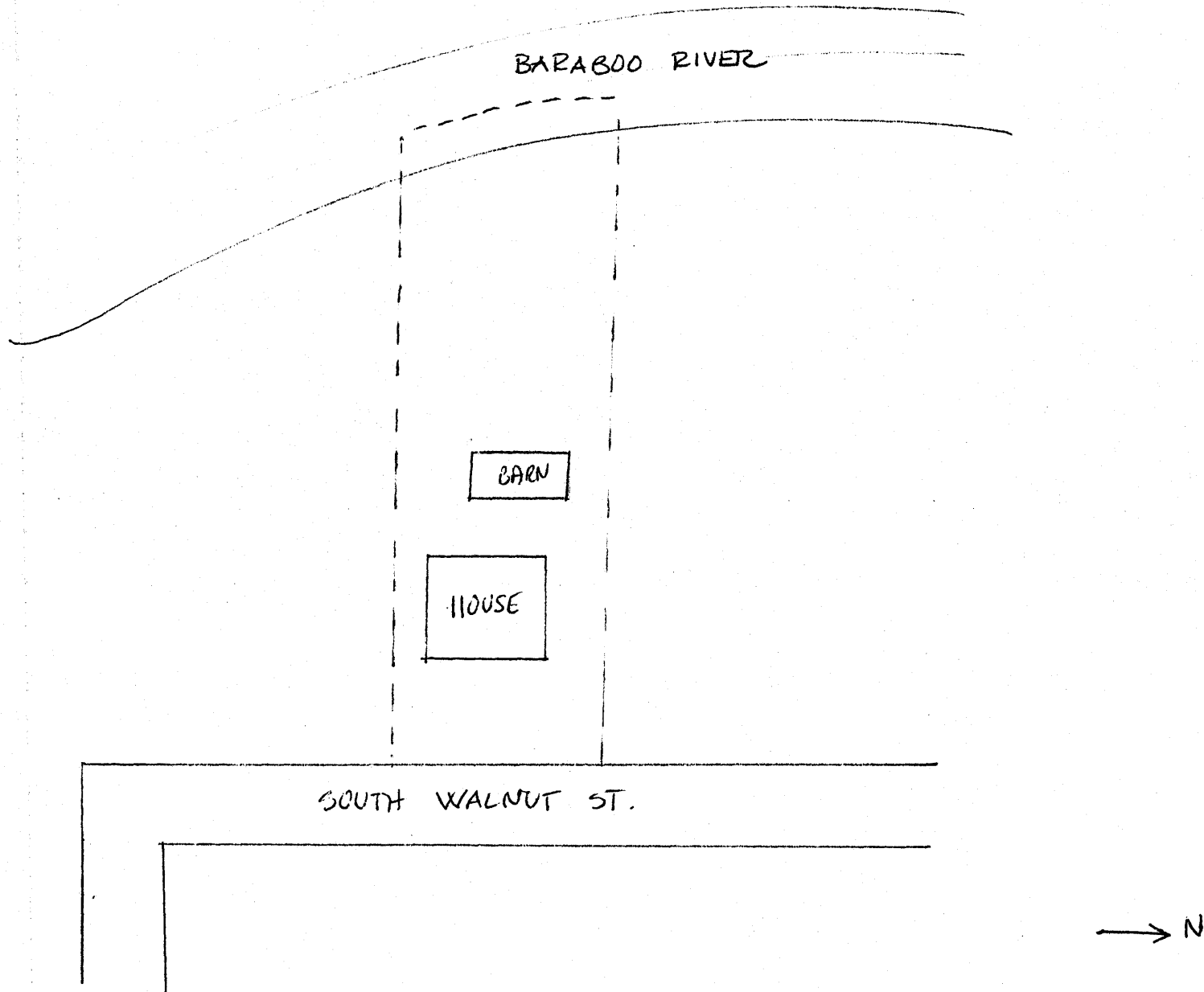
Historical Background

William Stolte, Jr. was born in Reedsburg in 1866. At age 13 he began working in the mercantile business and continued in that line for the rest of his life except for six years he spent as a traveling hops salesman. In 1893 Stolte, Louis Dangel and Frank Foss organized Stolte, Dangel and Foss, a retail store. All three had been employed by the firm of Harris & Hosler and when that company left the mercantile business, Stolte, Dangel and Foss took over the store. Stolte ran the cold storage and grocery departments as well as overseeing the store's finances (G). He was secretary-treasurer of the company in 1912 (H). Harris & Hosler built a new business block for the company in 1896 at 196 Main Street. For ten years from 1908-1918 Stolte, Dangel and Foss also ran the former "Big Store" of Webb and Schweke (gone). After that Stolte, Jr. went into a cold storage business (D).

Historical Statement of Significance

Additional Description con't:

The north side of the house has an interesting semi-circular arched window head with sunburst pattern woodwork above. West of this, a two story bay window with modillions forms a pedimented gable with the roof. The tip of the gable is enclosed and there is a triangular head gable window below. The south side of the house has a two story bay window with a leaded glass and a pyramidal roof. A one story bay window that also has a pyramidal roof is on the west. The back section of the house lacks ornamentation, although an exterior fire escape stairway has been put on in recent years. The house is painted white with aqua trim. Landscaping consists of a few large evergreens near the house. It is situated near the end of the street close to the Baraboo River in a residential neighborhood. Although built as a single family residence, the building has been changed to apartment. Much of its exterior integrity remains.



WILLIAM STOLTE, JR. HOUSE
432 SOUTH WALNUT STREET
--- BOUNDARY OF NOMINATED
PROPERTY