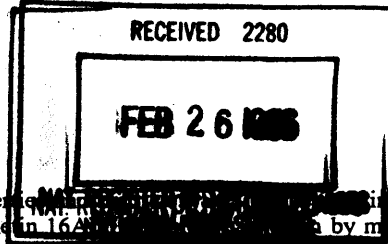


3A8

United States Department of the Interior
National Park Service



National Register of Historic Places
Registration Form

This form is for use in nominating or requesting determinations for individual properties. See *How to Complete the National Register of Historic Places Registration Form* (National Register Bulletin 16A) for instructions by marking "x" on the appropriate line or by entering the information requested. If an item does not apply to the property being documented, enter "N/A" for "not applicable." For functions, architectural classification, materials, and areas of significance, enter only categories and subcategories from the instructions. Place additional entries and narrative items on continuation sheets (NPS Form 10-900a). Use a typewriter, word processor, or computer, to complete all items.

1. Name of Property

historic name OSKALOOSA MONTHLY MEETING OF FRIENDS PARSONAGE
other names/site number _____

2. Location

street & number 910 North C Street N/A not for publication
city or town Oskaloosa N/A vicinity
state Iowa code IA county Mahaska code 123 zip code 52577

3. State/Federal Agency Certification

As the designated authority under the National Historic Preservation Act, as amended, I hereby certify that this (nomination / request for determination of eligibility) meets the documentation standards for registering properties in the National Register of Historic Places and meets the procedural and professional requirements set forth in 36 CFR Part 60. In my opinion, the property (meets / does not meet) the National Register criteria. I recommend that this property be considered significant (nationally / statewide / locally). See continuation sheet for additional comments.)
Patricia O'Connell King DSHP 2-21-96
Signature of certifying official/Title Date
State or Federal agency and bureau _____

In my opinion, the property (meets / does not meet) the National Register criteria. (See continuation sheet for additional comments.)

Signature of certifying official/Title Date
State or Federal agency and bureau _____

4. National Park Service Certification

- I hereby certify that the property is :
- entered in the National Register.
 - See continuation sheet.
 - determined eligible for the National Register
 - See continuation sheet
 - determined not eligible for the National Register
 - removed from the National Register.
 - Other, (Explain)

Edson H. Beall Signature of Keeper Date of Action 3/29/96
Entered in the National Register

5. Classification

Ownership of Property
(Check as many lines as apply)

Category of Property
(Check only one line)

Number of Resources within Property
(Do not include previously listed resources in the count.)

- private
- public-local
- public-State
- public-Federal

- building(s)
- district
- site
- structure
- object

Contributing	Noncontributing	
1	0	buildings
		sites
		structures
		objects
1	0	Total

Name of related multiple property listing
(Enter "N/A" if property is not part of a multiple property listing)

Number of contributing resources previously listed in the National Register

The Quaker Testimony in Oskaloosa, Iowa

0

6. Function or Use

Historic Functions
(Enter categories from instructions)

Current Functions
(Enter categories from instructions)

RELIGION/church-related residence

RELIGION/church-related residence

7. Description

Architectural Classification
(Enter categories from instructions)

Materials
(Enter categories from instructions)

LATE 19TH AND EARLY 20TH CENTURY AMERICAN
MOVEMENTS/Prairie School

foundation Concrete

walls Wood

Stucco

roof Asphalt

other Glass

Narrative Description

(Describe the historic and current condition of the property on one or more continuation sheets.)

8. Statement of Significance

Applicable National Register Criteria

(Mark "x" on one or more lines for the criteria qualifying the property for National Register listing)

- A** Property is associated with events that have made a significant contribution to the broad patterns of our history.
- B** Property is associated with the lives of persons significant in our past.
- C** Property embodies the distinctive characteristics of a type, period, or method of construction or represents the work of a master, or possesses high artistic values, or represents a significant and distinguishable entity whose components lack individual distinction.
- D** Property has yielded, or is likely to yield, information important in prehistory or history.

Criteria Considerations
(Mark "x" on all the lines that apply)
Property is:

- A** owned by a religious institution or used for religious purposes.
- B** removed from its original location.
- C** a birthplace or grave.
- D** a cemetery.
- E** a reconstructed building, object, or structure.
- F** a commemorative property.
- G** less than 50 years of age or achieved significance within the past 50 years.

Areas of Significance

(Enter categories from instructions)

RELIGION
ARCHITECTURE

Period of Significance

1915
1917-1918
1941-1945

Significant Dates

1915

Significant Person

(Complete if Criterion B is marked above)

N/A

Cultural Affiliation

Architect/Builder

A. T. Simmons, Architect

Narrative Statement of Significance - (Explain the significance of the property on one or more continuation sheets)

9. Major Bibliography References

Bibliography

(Cite the books, articles and other sources used in preparing this form on one or more continuation sheets.)

Previous documentation on file (NPS):

- previous determination of individual listing (36 CFR 67) has been requested
- previously listed in the National Register
- previously determined eligible by the National Record
- designated a National Historic Landmark
- recorded by American Buildings Survey # _____
- recorded by Historic American Engineering Record # _____

Primary location of additional data:

- State Historical Preservation Office
- Other State agency
- Federal agency
- Local government
- University
- Other

Name of repository

Oskaloosa Monthly Meeting of Friends Parsonage
Name of Property

Mahaska County, Iowa
County and State

10. Geographical Data

Acreege of Property Less than one acre

UTM References

(Place additional UTM references on a continuation sheet.)

1 | 15 | 529 470 | 45 72 225 |

Zone Easting Northing

2 | | | |

Zone Easting Northing

3 | | | |

Zone Easting Northing

4 | | | |

Verbal Boundary Description

(Describe the boundaries of the property on a continuation sheet)

Boundary Justification

(Explain why the boundaries were selected on a continuation sheet)

11. Form Prepared By

name/title William C. Page, Public Historian; Joanne R. Walroth
organization Oskaloosa Historic Preservation Commission date October 28, 1994
street & number 520 East Sheridan Avenue telephone 515-243-5740; FAX 515-243-7285
city or town Des Moines state Iowa zip code 50313

Additional Documentation

Submit the following items with the completed form:

Continuation Sheets

Maps

A USGS map (7.5 or 15 minute series) indicating the property's location.

A Sketch map for historic districts and properties having large acreage or numerous resources.

Photographs - Representative black and white photographs of the property.

Additional items - (Check with the SHPO or FPO for any additional items)

Property Owner

(Complete this item at the request of SHPO or FPO.)

name Oskaloosa Monthly Meeting of Friends
street & number 912 North C Street telephone 515-673-4731
city or town Oskaloosa state Iowa zip code 52557

Paperwork Reduction Act Statement: This information is being collected for applications to the National Register of Historic Places to nominate properties for listing or determine eligibility for listing, to list properties, and to amend existing listings. Response to this request is required to obtain a benefit in accordance with the National Historic Preservation act, as amended (16 U.S.C. 470 et seq.).

Estimated Burden Statement: Public reporting burden for this form is estimated to average 18.1 hours per response including time for reviewing instructions, gathering and maintaining data, and completing and reviewing the form. Direct comments regarding this burden estimate or any aspect of this form to the Chief, Administrative Services Division, National park Service, P.O. Box 37127, Washington, DC 20013-7127; and the Office of Management and Budget, Paperwork Reductions Projects (1024-0018), Washington, DC 20503.

**United States Department of the Interior
National Park Service**

**NATIONAL REGISTER OF HISTORIC PLACES
CONTINUATION SHEET**

Section number 7

Page 1

CFN-259-1116

Oskaloosa Monthly Meeting of Friends Parsonage, Mahaska County, Iowa.

GENERAL DESCRIPTION

This is a 2-story, frame building clad with stucco. Built in 1915, this single-family dwelling features a gable-end facade, concrete block foundation, and front porch covered by a gable-end roof and supported by wood columns. A band of wood separates the second floor from the attic areas. The house contains several ribbon windows, which generally are double-hung sash with multi-pane above and single pane below.

The integrity of this building is high, with few discernible alterations.

PARSONAGE

The main portion of the parsonage measures approximately 26' x 30' (width by depth), with a wrap-around porch situated on its northwest corner. This porch contains an area of about 200 square feet and is unenclosed.

The building rests on a brick foundation. Of balloon frame construction, the building is clad with stucco. The roof is covered with asphalt shingles.

On the interior, Floor 1 features hardwood floors, while hardwood and softwood are employed for the floors of Floor 2. Some floors are now covered with wall-to-wall carpet. Interior wall finishes are plaster. A fireplace is situated in the living room. The full basement features a concrete floor. The building also possesses an attic.

Overall the parsonage is in very good or fine condition.

SITE

The Oskaloosa Monthly Meeting of Friends Parsonage is situated on Lot 9 in Westervelts Subdivision to the City of Oskaloosa. This parcel measures 66' x 120' (width by depth). The house stands on the east side of North C Street and faces west.

A 1-story, attached frame garage is situated at the rear of the parsonage. It measures approximately 22' x 26' and is a modern addition to the property. Because the parsonage blocks the view of the garage from the street, this addition is unobtrusive.

The site of this property is generally level in topography. The Iowa Year Meeting House-College Avenue Friends Church, which dominates its immediate surroundings because of its large scale and massive design, stands on Lot 10 immediately to the north of the parsonage. The feeling of this neighborhood is that of densely built, relieved somewhat by a park, located across College Avenue to the north.

United States Department of the Interior
National Park Service

NATIONAL REGISTER OF HISTORIC PLACES
CONTINUATION SHEET

Section number 7

Page 2

CFN-259-1116

Oskaloosa Monthly Meeting of Friends Parsonage, Mahaska County, Iowa.

The new-site campus of William Penn College is located about four blocks to the north, while the old-site campus is located across College Avenue and adjacent to the park mentioned above.

United States Department of the Interior
National Park Service

NATIONAL REGISTER OF HISTORIC PLACES CONTINUATION SHEET

Section number 7

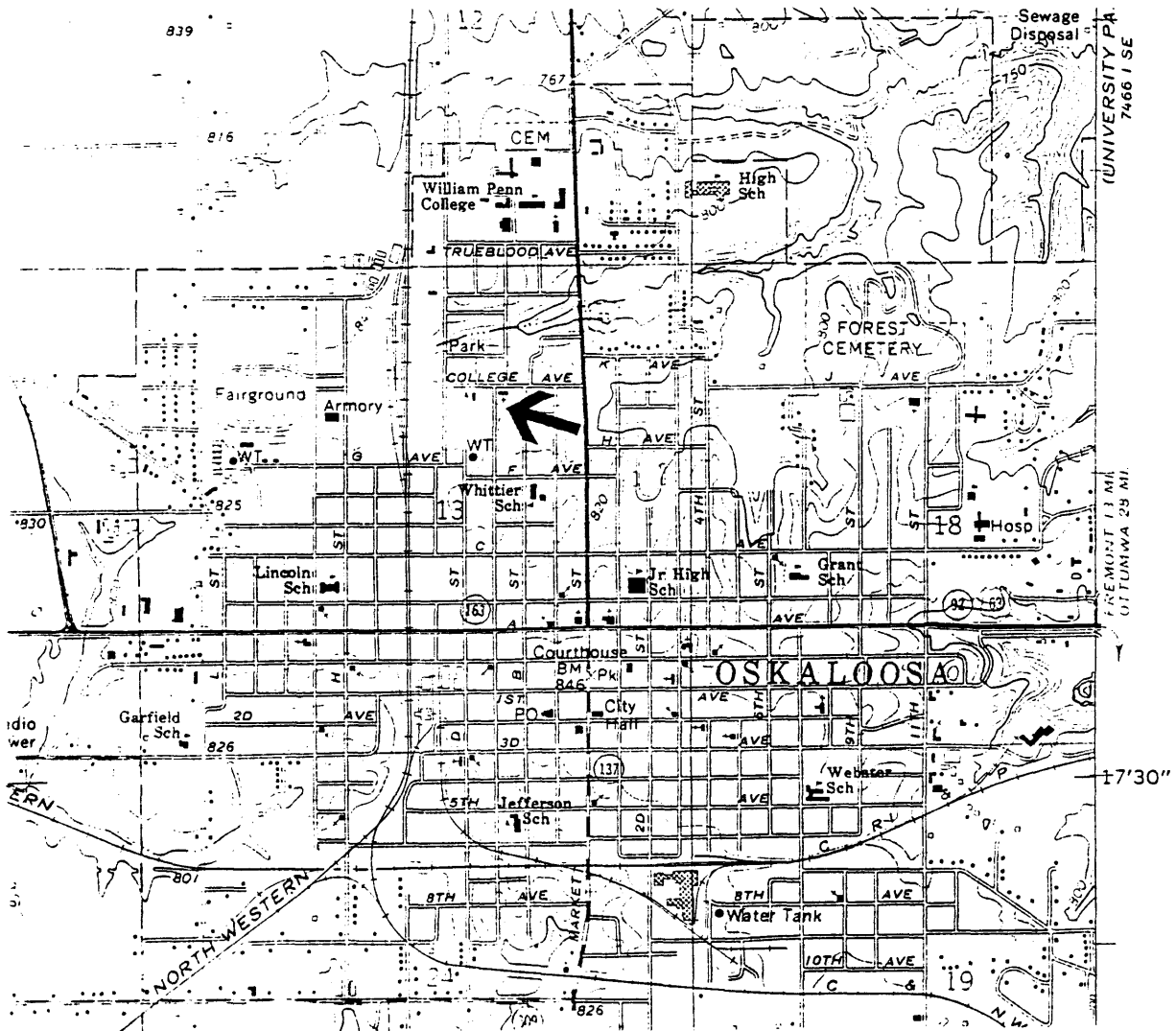
Page 3

CFN-259-1116

Oskaloosa Monthly Meeting of Friends Parsonage, Mahaska County, Iowa.

SITE MAP

ARROW LOCATES PROPERTY



Source: U.S.G.S. Map (7.5 Minute Series), Oskaloosa Quadrangle, 1968.

United States Department of the Interior
National Park Service

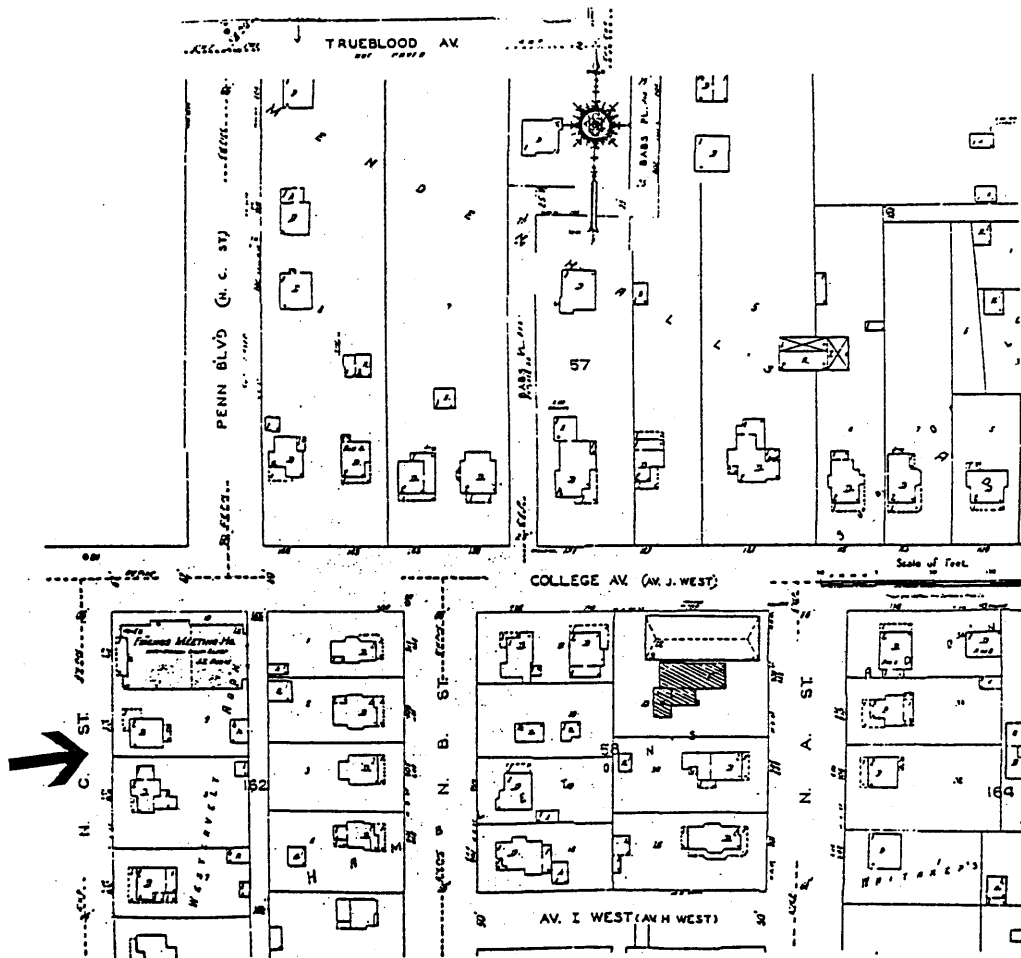
NATIONAL REGISTER OF HISTORIC PLACES CONTINUATION SHEET

Section number 7 Page 4

CFN-259-1116

Oskaloosa Monthly Meeting of Friends Parsonage, Mahaska County, Iowa.

PLAT MAP ARROW LOCATES PROPERTY



Source: Sanborn Map Company, 1927.

United States Department of the Interior
National Park Service

NATIONAL REGISTER OF HISTORIC PLACES CONTINUATION SHEET

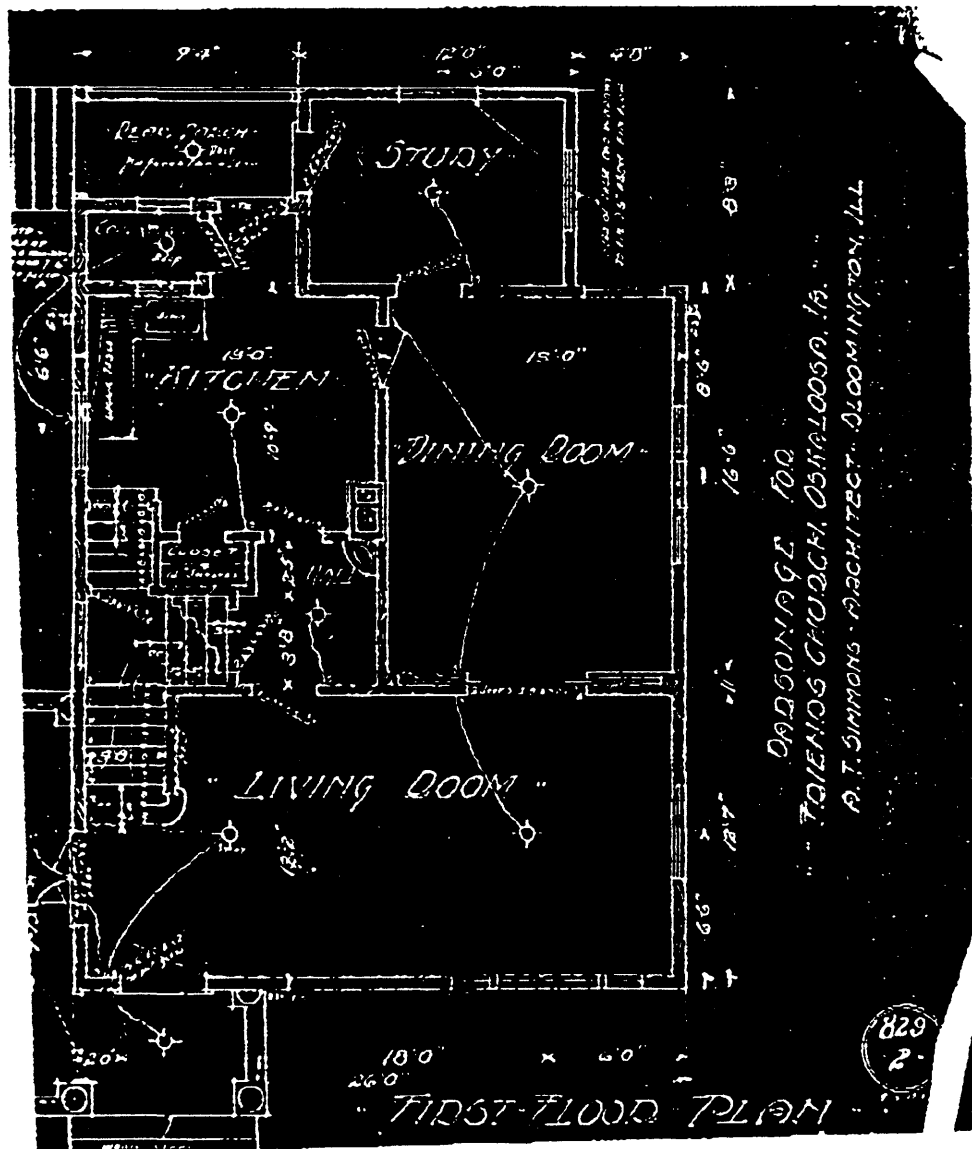
Section number 7 Page 5

CFN-259-1116

Oskaloosa Monthly Meeting of Friends Parsonage, Mahaska County, Iowa.

FIRST FLOOR PLAN

SIMMONS' DRAWINGS FOR PARSONAGE, PAGE 829-2.



Source: Archives, Oskaloosa Monthly Meeting of Friends.

United States Department of the Interior
National Park Service

NATIONAL REGISTER OF HISTORIC PLACES CONTINUATION SHEET

Section number 7

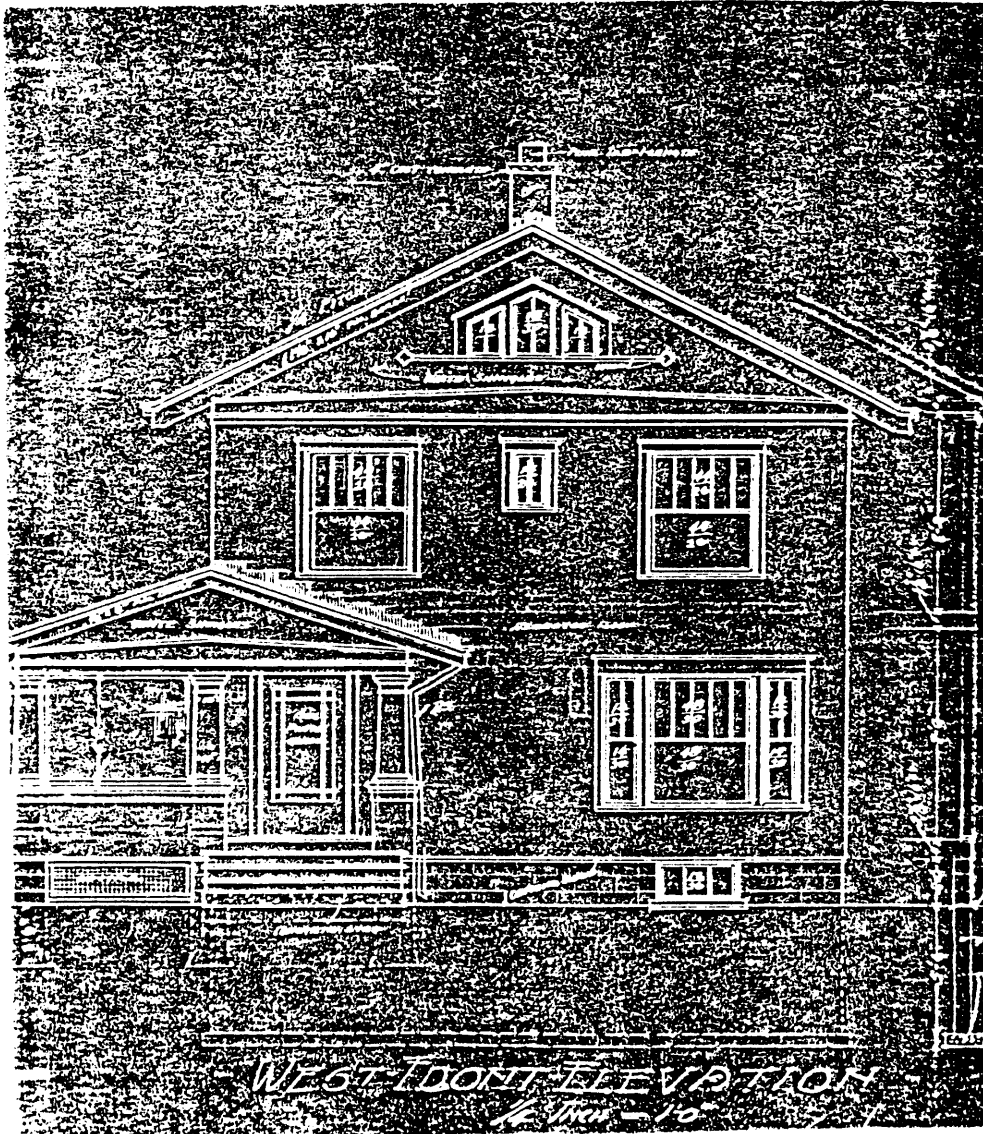
Page 6

CFN-259-1116

Oskaloosa Monthly Meeting of Friends Parsonage, Mahaska County, Iowa.

WEST FRONT ELEVATION

SIMMONS' DRAWINGS FOR PARSONAGE, PAGE 829-3.



Source: Archives, Oskaloosa Monthly Meeting of Friends.

United States Department of the Interior
National Park Service

NATIONAL REGISTER OF HISTORIC PLACES CONTINUATION SHEET

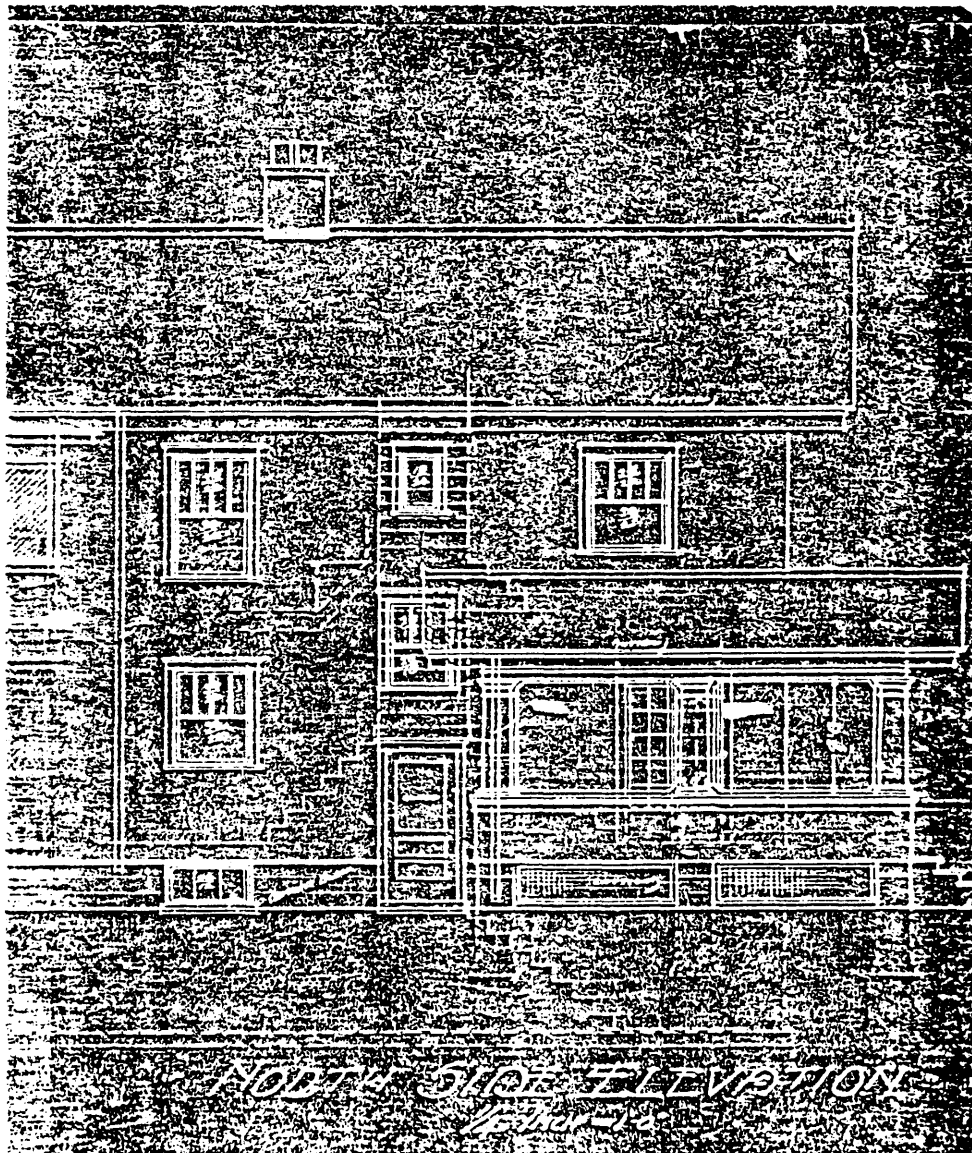
Section number 7 Page 7

CFN-259-1116

Oskaloosa Monthly Meeting of Friends Parsonage, Mahaska County, Iowa.

NORTH SIDE ELEVATION

SIMMONS' DRAWINGS FOR PARSONAGE, PAGE 829-6.



Source: Archives, Oskaloosa Monthly Meeting of Friends.

United States Department of the Interior
National Park Service

NATIONAL REGISTER OF HISTORIC PLACES
CONTINUATION SHEET

Section number 8 Page 8

CFN-259-1116

Oskaloosa Monthly Meeting of Friends Parsonage, Mahaska County, Iowa.

SUMMARY OF SIGNIFICANCE

Built in 1915 as a single-family dwelling, the Oskaloosa Monthly Meeting of Friends Parsonage possesses historic significance, under National Register Criterion A, because it calls attention to events and patterns associated with Quaker religious institutions within the historic context "The Quaker Testimony in Oskaloosa, Iowa." The entry of the United States into World War I and World War II posed serious questions to the Quakers' traditional "Peace Testimony." In retaliation to the Oskaloosa Monthly Meeting counseling Penn students about military conscription and pacifism, a series of criminal acts occurred in 1917. These included painting yellow crosses on the Oskaloosa Monthly Meeting Parsonage and pillorying Rev. Clarence Pickett, pastor of the church, by tying him to a spring wagon and leading him about Oskaloosa. Although apparently to a lesser extent, such acts also occurred during World War II, including smearing yellow paint on the parsonage.

The Oskaloosa Monthly Meeting of Friends Parsonage also possesses architectural significance. Influenced by Prairie School styling and designed by A. T. Simmons, architect of Bloomington, Illinois, the parsonage calls attention to that individual's influence on Quaker architecture in Oskaloosa. Having designed the Iowa Yearly Meeting House-College Avenue Friends Church in 1912, Oskaloosa Friends commissioned him to prepare plans for their parsonage three years later. Following the destruction of Penn College's Main Building by fire in 1916, Simmons was again commissioned to prepare plans for college reconstruction. While the Iowa Yearly Meeting House-College Avenue Friends Church illustrates Simmons' abilities at Colonial Revival styling, the parsonage and college buildings show his skill in employing Prairie School elements.

The period of significance, under Criterion A, for the Oskaloosa Monthly Meeting of Friends Parsonage is 1917 to 1918, the years during World War I, when the building became the object of vandalism, as well as during World War II, from 1941 to 1945, when such activity reoccurred. The period of significance, under Criterion C, is 1915, the year the building's construction was completed.

The property contains one resource for this nomination--the parsonage.

EVENTS AND PATTERNS

The Oskaloosa Monthly Meeting Parsonage obtains significance as the pastor's residence for the College Avenue Meeting House, particularly illustrating the connections between Penn College, the Iowa Yearly Meeting, and the Oskaloosa Monthly Meeting. The pastor of this meeting has always been responsible to the members of the Oskaloosa Monthly Meeting. But because the College Avenue Meeting House was shared by the Yearly Meeting until the late 1960s, a close working relationship between the pastor and the larger body has developed historically.

Similarly, because many Penn students over the years have attended and belonged to the Oskaloosa Monthly Meeting during their years at college, the pastor has maintained close ties to that institution. The first occupants, for example, were Rev. Edgar H. and D. Irene Stranahan, who both later taught at Penn, with Edgar becoming one of the twenty faculty members who served the college for the

**United States Department of the Interior
National Park Service**

**NATIONAL REGISTER OF HISTORIC PLACES
CONTINUATION SHEET**

Section number 8 Page 9

CFN-259-1116

Oskaloosa Monthly Meeting of Friends Parsonage, Mahaska County, Iowa.

longest time. In more recent years, Rev. O. Duane Moon served first as pastor of the Oskaloosa Monthly Meeting, and subsequently as president of William Penn College, beginning that job in 1964.

This parsonage also obtains significance because during both World War I and World War II it was vandalized by those opposed to the Quakers and their "Peace Testimony." The pastors at both times became symbols of the Friends' opposition to military service by counseling students about conscientious objector status or alternative service, particularly with the American Friends Service Committee. Some people in the area resented these actions and vandalized the parsonage, spraying it with yellow paint.

The parsonage obtains further significance because of its first occupants. The Stranahans later both taught at Penn College, as well as serving the Monthly Meeting. Their daughter Esther also taught at Penn. When the Stranahans were teaching, they relocated to 1001 Gurney Avenue, where Rev. Stranahan had built a home that shares certain characteristics with the parsonage, its stucco exterior wall cladding being the most prominent. Perhaps Rev. Stranahan had earlier influenced the design of the parsonage. The Stranahans are significant moreover because of their family name, which is Irish. The Society of Friends under its first leader George Fox gained some of its earliest converts in Ireland and Scotland. The persistence of family names such as Stranahan indicates their continuing adherence to the sect, as well as that of Gurney, the street on which the Stranahans lived.

ARCHITECTURE

As a documented design of A. T. Simmons, architect of Bloomington, Illinois, the Oskaloosa Monthly Meeting of Friends Parsonage shows that architect's abilities in employing Prairie School styling. Ribbon windows are situated in the gable end of the facade, as well as on its first floor, and ribbon windows also are situated on the south elevation. A horizontal band in the facade gable also points to Prairie School influence. Although these stylistic influences are modest, they act as foils for Simmons' fully developed Prairie School styling in Oskaloosa, as seen in Penn Hall, the Women's Residence Building, and the Central Heating Plant on the Penn College campus.

A series of original drawings in blueprint format survive to document Simmons' work on the parsonage. Paginated with the numeral prefix "829," these six documents suggest that Simmons had already reached more than 800 commissions prior to beginning work on this building.

REPRESENTATION IN OTHER CULTURAL RESOURCES SURVEYS

The parsonage was surveyed in 1981 as part of the Area XV Regional Planning Commission's then comprehensive cultural resources surveys of Mahaska County. At that time, the Historical Survey did not identify or evaluate the building within the context of Quaker resources in Oskaloosa. The Architectural Survey evaluated the building as not eligible for nomination, under National Register Criterion C. In the intervening years, more information has come to light regarding this building and its place within the historic context "The Quaker Testimony in Oskaloosa, Iowa."

United States Department of the Interior
National Park Service

NATIONAL REGISTER OF HISTORIC PLACES CONTINUATION SHEET

Section number 8 Page 10

CFN-259-1116

Oskaloosa Monthly Meeting of Friends Parsonage, Mahaska County, Iowa.

POTENTIAL FOR HISTORICAL ARCHAEOLOGY

Although the site's potential for archaeological research is, as yet, unevaluated, there appears to be little if any in this regard.

United States Department of the Interior
National Park Service

NATIONAL REGISTER OF HISTORIC PLACES CONTINUATION SHEET

Section number 9 Page 11

CFN-259-1116

Oskaloosa Monthly Meeting of Friends Parsonage, Mahaska County, Iowa.

BIBLIOGRAPHY

PRIMARY

Sanborn Fire Insurance Map for 1927.

Simmons, A. T.; Architect's Drawings. Dated August 1915.
Property College Avenue Friends Church, Oskaloosa, Iowa.

- Roof Plan
- Basement Plan
- Second Floor Plan
- First Floor Plan
- Section looking East
- Elevation looking North
- Detail of Kitchen Work Table
- West Front Elevation
- Casement Frames
- Check Rail Frames
- East Rear Elevation
- Basement Windows
- South Side Elevation
- Section Main Cornice
- Section thru Rake
- Roof of Sleeping Porch
- North Side Elevation

SECONDARY

"College Avenue Friends Oskaloosa Monthly Meeting," p. 7.

Housing list prepared by Oskaloosa Monthly Meeting volunteers.

Naumann, Molly Myers; *Architectural Survey of Oskaloosa, Iowa*; Report prepared by the Area XV Regional Planning Commission and on file at the State Historical Society of Iowa; 1981.

Page, William C.; *Historical Survey of Mahaska County, Iowa*; Report prepared by the Area XV Regional Planning Commission and on file at the State Historical Society of Iowa; 1981.

United States Department of the Interior
National Park Service

**NATIONAL REGISTER OF HISTORIC PLACES
CONTINUATION SHEET**

Section number 9

Page 12

CFN-259-1116

Oskaloosa Monthly Meeting of Friends Parsonage, Mahaska County, Iowa.

Page, William C., and Joanne R. Walroth; *Intensive Cultural Resources Survey of the Quaker Testimony in Oskaloosa, also including the Chicago, Rock Island, & Pacific Railroad Area*; Report prepared for and on file at the Oskaloosa Historic Preservation Commission and State Historical Society of Iowa, Des Moines; 1992.

Watson, *William Penn College*, p. 310, 313.

United States Department of the Interior
National Park Service

NATIONAL REGISTER OF HISTORIC PLACES
CONTINUATION SHEET

Section number 10 Page 13

CFN-259-1116

Oskaloosa Monthly Meeting of Friends Parsonage, Mahaska County, Iowa.

VERBAL BOUNDARY DESCRIPTION

Lot 9 in Westervelts Subdivision of the City of Oskaloosa, Iowa.

BOUNDARY JUSTIFICATION

The National Register boundary contains all land associated historically with this resource.

United States Department of the Interior
National Park Service

**NATIONAL REGISTER OF HISTORIC PLACES
CONTINUATION SHEET**

Section number 10 Page 14

CFN-259-1116

Oskaloosa Monthly Meeting Parsonage, Mahaska County, Iowa.

LIST OF PHOTOGRAPHS

1. Oskaloosa Monthly Meeting of Friends Parsonage
910 North C Street
Oskaloosa, IA 52557
Looking southeast
Patricia Pierce Patterson, Photographer
April 24, 1994

2. Oskaloosa Monthly Meeting of Friends Parsonage
910 North C Street
Oskaloosa, IA 52557
Looking northeast
Patricia Pierce Patterson, Photographer
April 24, 1994